

**Committee of Inquiry on the  
Control of Industry (Fabian  
Society Research Department).**

**Programme of Conference to be held  
at Barrow House, on Lake Derwent-  
water, from July 19th to July 26th,  
1913.**

**37, Norfolk Street, Strand, London, W.C. Telephone :  
9712 Central.**



Barrow House: Lake Derwentwater.



THE Committee of Inquiry into the Control of Industry, which now includes members living in different parts of Great Britain, has arranged to devote the third week of July, 1913, to a general discussion of its subject-matter, both as regards the information collected and the main lines of the Report to be made. A considerable proportion of the members of the Committee, including Mr. and Mrs. Sidney Webb, the Chairmen and Secretaries of the four Sub-Committees, and nearly all the most active workers, have already arranged to be present, and it is expected that they will be joined by many of those living in the North of England and Scotland, who are unable to attend the London meetings; by other members of the Fabian Society; by some of the representatives of the Co-operative Movement who are actively helping in the Inquiry; by expert advisers connected with various branches of industry; and by other sympathisers.

One of the drawbacks to an Inquiry conducted, not by paid subordinates working from a central office but by a large number of interested but otherwise busy volunteers, is that so much of the work is solitary, specialised and not brought into focus. Many of our most zealous workers have expressed their desire for a chance of meeting, not merely in formal conference, but in intimate companionship, those with whom they are distantly co-operating. We have, therefore, for the July Conference, arranged to take over the whole accommodation of the Fabian Summer School, at Barrow House, Keswick, with its beautiful grounds stretching down to Lake Derwentwater. During the week the arrangements will be entirely under the control of the Committee. We may expect to discuss every morning from 9.30 to 12.30; to spend the afternoon in walking, swimming, boating or playing, in one way or another, and to reunite after tea, or in the evening, for further mutual talk. At Barrow House itself, with all its outbuildings, there is accommodation for about seventy-five persons; and there are lodgings and hotels within easy reach for those who prefer them. Members of the Committee (including Consultative members), together with friends specially invited to assist in the discussions, will have preference for the accommodation still remaining unallotted; but applications from other persons wishing to attend are also invited, and these will be dealt with according to the space available.



## Programme of the Conference.

SATURDAY, July 19th.—Arrival of Members.

SUNDAY, July 20th.—10 a.m.—Reception of Members (including Non-Residents) by Mrs. Sidney Webb, who will give an Address on "The Spheres of Science and Religion in Social Reconstruction."

8 p.m.—Report by the Hon. Secretary (C. Morgan Webb) on The Progress of the Inquiry; and general discussion.

MONDAY, July 21st.—9.30 a.m.—Subject for discussion: The Present State of Trade Unionism in Great Britain, and the Problems immediately before it. (a) The sphere of the Trade Union in the Control of Industry; (b) Local Autonomy versus Centralisation in regard to the making of War and Peace; (c) Industrial Unionism or Amalgamation versus Federation as the future form of organisation; (d) German Trade Unionism—its lessons, and their application to Great Britain.

4.30 p.m.—Subject for discussion: Syndicalism—What validity does our Inquiry show it to possess? What influence have the Syndicalist ideal and the Syndicalist methods had on English Trade Unionism and the Labour Party?

TUESDAY, July 22nd.—9.30 a.m.—Subject for discussion: Co-operative Production on the basis of the "Self-governing Workshop"—the lessons from its failure.

4.30 p.m.—Subject for discussion: Co-operative Production—the Compromise of Profit-sharing and Industrial Co-partnership—how do we find it to affect, in fact, the workman's Standard of Life, and the problem of Industrial Self-government.

The Programme for Wednesday and Thursday will be subject to a possible allocation of one of these days—whichever may prove to be the sunniest!—for a General Excursion, if this is desired. In that case the Business Meeting, here put down for Friday morning, will be held by those concerned on the morning of the Excursion at 9 a.m.; and Friday morning will be occupied by the discussion displaced by the Excursion.

WEDNESDAY, July 23rd.—9.30 a.m.—Subject for discussion: The Co-operative Store and the Wholesale Society as manufacturers and distributors: their success in competing with (i) the village grocer, (ii) the "department store," (iii) the capitalist factory, (iv) the multiple shop: Limits to growth.

8 p.m.—The Co-operative Movement—Frictions and Tensions: (a) The "Wholesale" Productive Departments versus the Commercial Traveller; (b) the Enthusiast and the "Divi"-hunter; (c) the Members' Meeting, the Salaried Official and the Employee. The Co-operative Ideal.



THURSDAY, July 24th.—9.30 a.m.—Subject for discussion: Collective Ownership (State or Municipal)—to what industries or services has it been applied, or can it, within the near future, be extended—conditions of its success.

4.30 p.m.—The Evils of Bureaucracy—what are they, and how can they be prevented? Is there any other way than State or Municipal Ownership by which the aggregate of Rent or “Surplus Value” can be secured for the whole community?

FRIDAY, July 25th.—(Available for General Excursion.)—9 a.m.—Business meeting of the Chairman, the Hon. Secretary, the Chairmen and Hon. Secretaries of the four Sub-Committees, and any other members wishing to attend; to settle the ways and means of completing the Inquiry during the ensuing Autumn and Winter, and the draft outline of the Report for the evening's discussion.

8 p.m.—General discussion on a Draft Outline of the eventual Report of the Committee.

SATURDAY, July 26th.—Departure of Members.

The Library will be supplied with books bearing on the subjects to be dealt with, and this room will be reserved for those who wish a silent place for study. Dark room in house for photography.



Derwentwater and Skiddaw, taken from the front of Barrow House.



## Fees.

### 1. Residents.

						PER WEEK.	PER DAY.	
						£	s.	d.
(a)	Single-bedded rooms	..	..	..	..	2	5	0
(b)	Two persons sharing room	..	..	..	..	1	17	6
(c)	For three or four persons sharing room	..	..	..	..	1	15	0
(d)*	Men Campers (two or four persons to a tent)	..	..	..	..	1	8	0

\* Campers will be expected to keep their tents and the camp in order themselves.

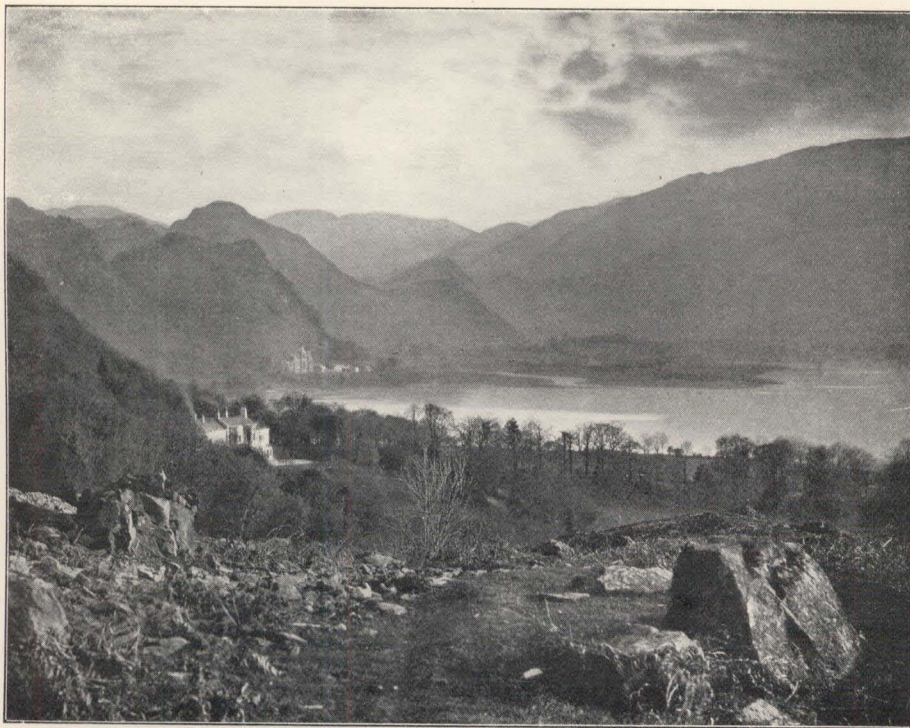
These fees include charge for lectures and gratuities to servants.

Vegetarians will be catered for.

2. Non-Residents may join the Conference, i.e., may attend all meetings, have free access to grounds, or join excursions for a weekly fee of 5s. Single meetings, 1s.

Applications for admission must be made on the form enclosed herewith, and must be accompanied by a booking fee of 10s. in part payment of the fees charged. The signature of the form will be taken as an agreement to abide by such rules as the Committee may from time to time draw up.

The balance of fees must be paid a clear week before the date of arrival.



The Head of Derwentwater and Scawfell, showing Barrow House and Grounds.



# Railway Arrangements.

(Based on those of 1912. Any alterations for the current year should be verified from time-tables, and will, as far as possible, be notified to intending visitors.)

Book to Keswick, L. & N. W. R.

Return Fares from Euston Station :—

Tourist **45s. 3d.** ; Excursion (3 or 5 days) **20s.**, (8 days) **24s. 9d.**, (8, 15, or 17 days) **27s.** ; Week-ends **28s.** (Friday to Tuesday).

## ORDINARY TRAINS FROM EUSTON TO KESWICK.

( Available for tourist and week-end ticket holders.)

EUSTON.	KESWICK.
<i>Leave.</i>	<i>Arrive.</i>
5.0 a.m. ....	2.0 p.m.
7.10 „ ....	3.54 „
11.25 <sup>r</sup> „ ....	6.28 „
2.0 <sup>r</sup> p.m. ....	9.10 „
10.0 „ ....	8.20 a.m.
12.5 <sup>e</sup> a.m. ....	10.9 „

<sup>r</sup> Restaurant car.      <sup>e</sup> Saturdays excepted.

Excursion trains leave Euston for Keswick on Friday nights at 12.30, and on Saturdays (except August 2nd and 9th), at 11.25 a.m. Excursion tickets at **20s.** and **24s. 9d.** are only available by the Friday night train. Excursion ticket holders must return on Mondays, Wednesdays or Saturdays by 9 a.m. train from Keswick.

Times of trains and particulars of excursions from Manchester, Glasgow, Newcastle, etc., etc., to Keswick should be obtained from the chief local railway stations.

Residents who give two clear days' notice to the Housekeeper, Barrow House, near Keswick, will be met at Keswick Station with conveyance for themselves and their luggage. Charge 1s. each way. There will be an additional charge of 1s. for luggage over 56 lbs.

## Hotels and Lodgings.

For non-residents the Royal Oak Hotel, Keswick, and the Lodore Hotel (about a mile from Barrow House) are recommended. A list of boarding houses will be sent on application.

## Excursions.

Visitors should bring nailed boots.

**The Catbells, Eel Crag and Borrowdale.** Walk to Lodore, thence by meadow path to Brandelhow Park, Catbells, Maiden Moor, Eel Crag and Grange.

**Causey Pike.** Walk via Lodore, Manesty and Little Town to Causey Pike; return same route or by Stair and Brandelhow Park and meadow path to Lodore.

**Borrowdale, Buttermere and Crummock Lakes.** Drive or Walk to Seatoller, thence walk over Honister Pass to Buttermere and Crummock. Return by same route or by Buttermere Hause, Newlands, Little Town, Manesty and Lodore.

**Blencathra.** Drive or walk to Threlkeld. Ascend Blencathra (2,847 feet) and descend via Knowe Crag, rejoining brakes at Threlkeld. This excursion involves about five hours' steady walk and climb.

An easy alternative is to walk from Threlkeld along the foot of the mountain and through the Brundholme Woods, joining brakes at either Brigham or Keswick.

**Great Gable.** Drive through Borrowdale to Seathwaite and thence walk and climb by Sty Head Gill to Great Gable (2,949 feet), returning over Brandreth, Green Gable and Honister Pass, rejoining conveyances at Seatoller. Five to six hours climbing and walking. This excursion is suitable only for good climbers. An alternative route for others is from Seathwaite to Sty Head Tarn, thence to Sprinkling Tarn and back to Seathwaite by Grain Gill. 6 miles.

**Lord's Seat and Barf.** Walk via Braithwaite to Lord's Seat, and return by Whinlatter Pass. 12 to 14 miles.

**Ascent of Skiddaw.** Via Crosthwaite and Underscar and Jenkin Hill to the summit (3,054 feet) and descend via Carlside to Millbeck, and drive to Barrow House.

**Watendlath, Rosthwaite and Grange.** Walk by moorland road to Watendlath, thence to Rosthwaite, Bowder Stone, Grange and Lodore.

**Thirlmere.** Walk to Watendlath, thence over moor to Thirlmere. Return by same route or walk down to the end of lake and return to Watendlath via Harrop Tarn.

---

Anyone wishing to remain after the end of the week, for the Conference arranged by the Joint Committee of the Independent Labour Party and Fabian Society, or to join the Fabian Summer School during the ensuing six weeks, should apply for the Prospectus to the Secretary, W. Stephen Sanders, Fabian Office, 3, Clements Inn, Strand, London, W.C.