

FEATURE THREE, F-88-3

Feature Form Brandon University 14.6.88

1. List feature contents.

WIDE ASSORTMENT OF BONE, LITHICS, CERAMICS, AND FC
ALL ARE NOT LIKELY TO BE ASSOCIATED WITH PERIOD OF
USE OF FEATURE.

2. Description of feature matrix (fill)

MED/DARK BROWN W/HEM ORGANIC, SANDY LOAM
SIGNIFICANT AMOUNT OF CULTURAL MATERIAL,
ALL OF WHICH IS

3. Description of matrix in which feature is located. (Matrix that has been truncated in the construction of the feature).

LIKELY A COMBINATION OF (1) STERILE GLACIAL CLAYS WHICH
MEDIATE IN COLOR, AND (2) OLDER OCCUPATION HORIZON
10-25CM B.S. CHARACTERIZED BY MED BLACK/BROWN ZONE,
VERY DIFF TO DISTINGUISH BETWEEN FEATURE FILL AND
DEPOSITS WHICH PREDATE CONSTRUCTION EVENT

4. Methodology. How was this feature excavated and recorded?

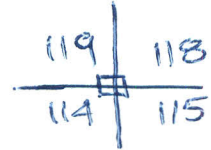
FEATURE WAS EX IN 1989 AND 1988, BUT WAS ONLY IDENTIFIED
AS A FEATURE IN 88. METHODOLOGY CONSISTS OF SHOVEL,
TROWEL AND FINE TOOL WORK. ALL UNITS UNITS 118, 123
EXCAVATED BY 10CM ARB LEVERS WHILE OTHER UNITS EX BY
5CM QUADS BY 50CM QUADS. PROFILING CONDUCTED IN 88 ALONG
WEST WALL OF UNITS 115, 118, 123 & NORTH WALL UNITS 119, 118
AND 117. 25 X 100CM TEST WINDOW PLACED.

5. Feature integrity. Does this feature appear to be in a primary context, or has it been disturbed? What evidence is there to back up your interpretation?

VERY HARD TO TELL. CONTEXT: WEST OUT LINE OF
FEATURE CAN BE MADE OUT ALONG STERILE CONTACT. ABOVE THIS
HOWEVER, VERT EXTENT IS VERY DIFF TO MAKE OUT MAJOR
INFO FOR HORIZONTAL EXTENT COMES FROM STAKE/FCR
OUTLINE FOUND IN LEV (3) UNIT 118/117. OTHER INFO
COMES FROM WALL PROFILES OF UNIT 118, 116, 114 AND 123.
SOME EVIDENCE FOR DISTURBANCES, OF A MINOR SORT FROM
RODENT BAY, FEATURE BY OUTLINE, HOWEVER, IS INTACT.
IT IS MY BELIEF THAT FEATURE FILL IS POST DEPOSITIONAL,
LIKELY NOT RELATED TO FEATURE CONSTRUCTION AND USE,
IF ANYTHING DEPOSITS AT 10CM APPEAR TO BE
ASSOCIATED WITH USE.

6. Collected Samples (List bag number(s), sample size, sample location, date).

A) Soil Sample. COL SAMPLE TAKEN FROM CORNER OF GRID.



B) Floatation Sample. —

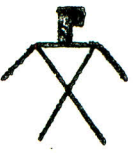
C) Microdebitage Sample. —

D) Radiocarbon. RC-2-88. TAKEN FROM FEATURE 2. LIKELY POST-DATING FEATURE CONSTRUCTION. RC-3-88, DATES ARE OUTSIDE FEATURE NOT CLEAR IF ASSOCIATED.

7. Possible Function. Based on feature form, contents and material recovered what do you see as being some of the possible functional uses of this feature. What is this interpretation based on? Has this feature been reused or does it represent a single event? PROBLEMATIC. AS A RESULT OF EXCAVATIONS FROM DIFFERENT FIELD SEASONS, DIFF. METHODOLOGIES AND MOST IMPORTANTLY, PROBLEMS IN IDENTIFICATION, IT IS HARD TO SPECULATE ON PAST USE OF FEATURE. NEVER THE LESS HEREIN COMES. PARTIAL OUTLINE, AS DEDUCED BY ROCK ALIGNMENT IN LEU 2 (UNIT 17) AND IDENT CONTACT WITH STERILE ALONG THE BASE PROVIDES US WITH AN INDICATION OF SHAPE. UNFORTUNATELY, IT APPEARS UNLIKELY THAT FILL MATERIAL IS ASSOCIATED WITH FEATURE CONSTRUCTION OR USE. MY IMPRESSION IS THAT FILL MATERIAL IS LIKELY TO BE IN A SECONDARY

8. Summary/General Comments. Provide a brief overview of this CONTEXT feature (Contents, important associations, possible functional uses). IF THERE IS ANY ASSOCIATED MATERIAL IT IS PROBABLY FOUND WITH THE HORIZONTAL SURFACE SCATTER OF BONE DEFINED FOR FEATURE ONE OR LEU TWO ASSOCIATED MATERIAL IN ADDITIONAL UNITS. IF SO, THEN THE BEST FUNCTIONAL INTERPRETATION WOULD BE A FOOD PROCESSING FEATURE (BOILING PIT?) IT SHOULD BE NOTED, HOWEVER, THAT SEVERAL VARIABLES, INCLUDING CHANGING EX METHODOLOGY AND PROBLEMS IN IDENTIFICATION, HAVE/ARE SERIOUSLY COMPOUSED OUR RECONSTRUCTION AND IDENTIFICATION OF THIS FEATURE. MAY ALWAYS REMAIN IN THE "WHAT CATEGORY"

I. KUJT. 7.7.88



BRANDON UNIVERSITY

Unit Summary Record

Site No. DJLX-1 Unit No. 115 Levels Excavated 0-7

Depth from Surface 0-35cm Depth from Datum —

Excavator(s) E. Spelman Date June 27/88

Excavation Method(s) Shovel and shovel shaving

Summary Deposits (vertical profile on back) _____

Black sandy matrix, clay (yellow) glacial till

Summary of Disturbance Noted but does not appear extensive.

Summary of Recoveries: Bone fragments (unidentifiable) Bones (Identified) Lithics (1 point) Ceramics (1 rim sherd) F.C.R.

Photo (Ref.) _____

Feature (Ref.) _____

Remarks: _____

Grid North

PROJ SURFACE

NW

NE

GRIDLINE TA #

SW

SE

SW

SE

NE

NORTH WALL

NEED BROWN SANDY LOAM.

GLACIAL CLAYS STERILE

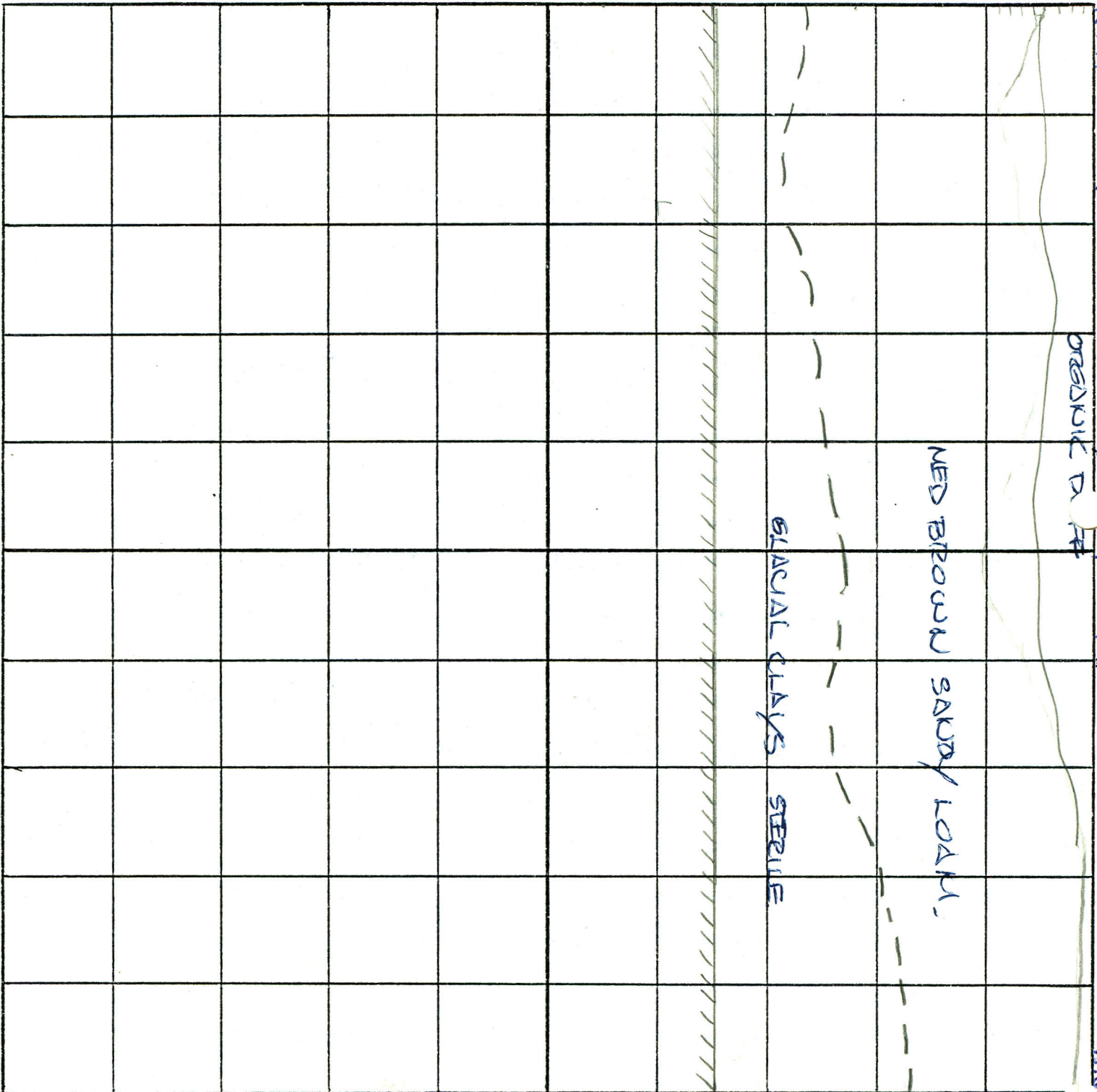
LIMIT OF EXCAVATION

UNIT # 115

June 27/88

SCALE

1:5



90

80

70

60

50

40

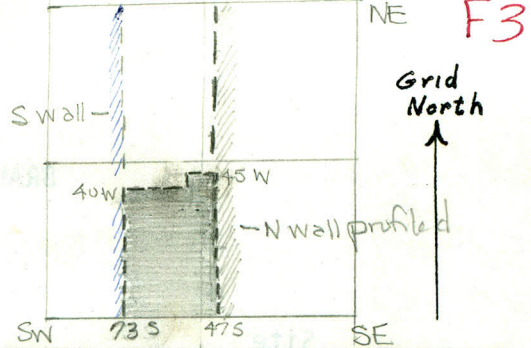
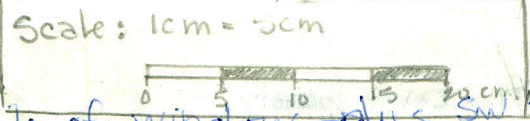
30

20

10

0

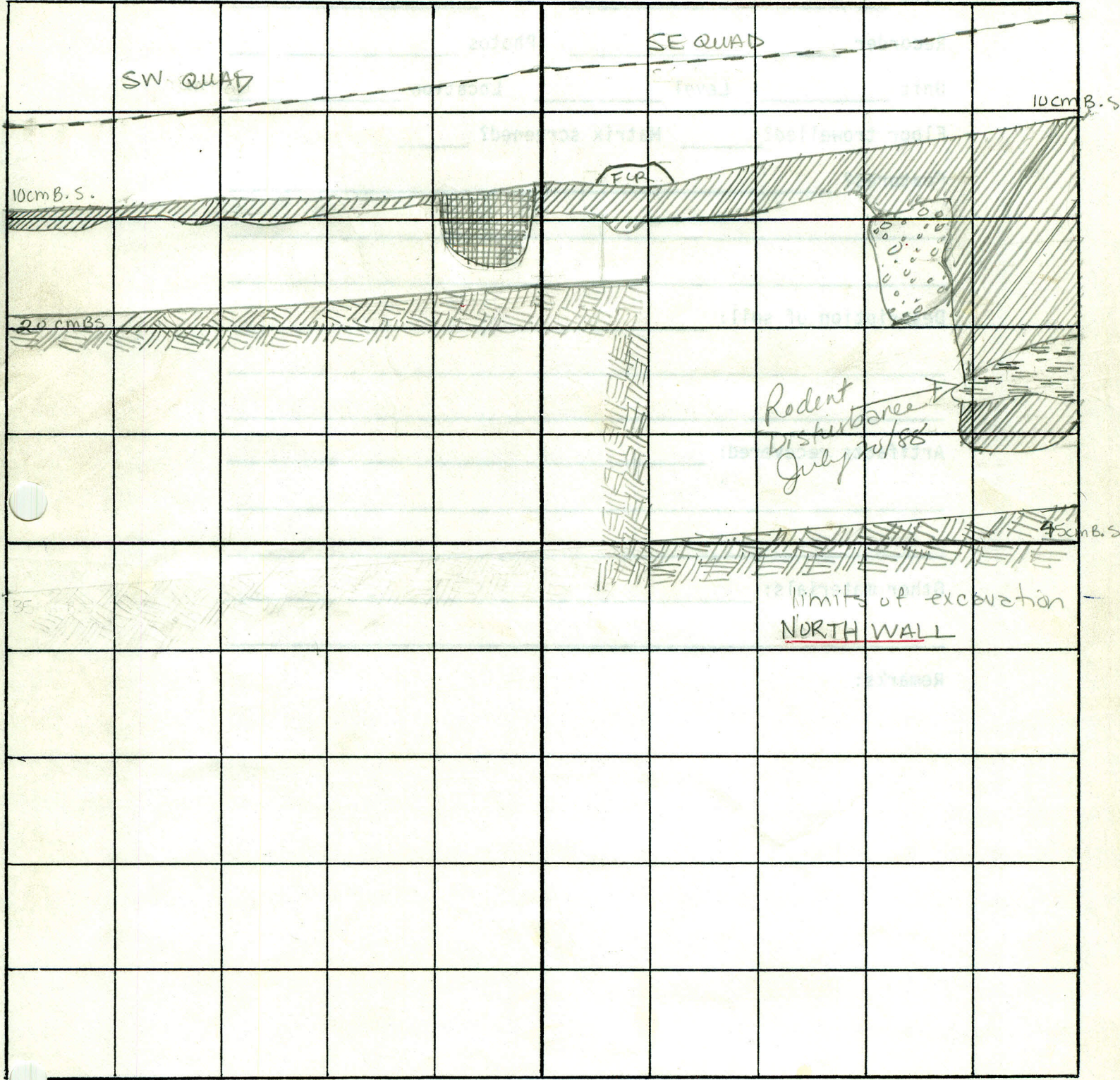
(Photos: Roll 4, frame 2: BTW
Roll 3, frame 23 Colour)



DjLx-1
Block E
Unit 117
SE QUAD - profile of window - plus SW QUAD
(547-73/WO-40)

Unit 117

Feature 3



nb top 10 cm of level removed before profile was drawn.

- dark brown, sandy loam
- rodent disturbance
- disturbance
- light tan clay; also in drawing
- disturbance with pebble inclusions -> rodent disturbance July 20/88

See July 2/88

DjLX-1

Block E

Unit 117

SE QUAD - profile of window (S47-73/W 0-40cm) plus SW QUAD

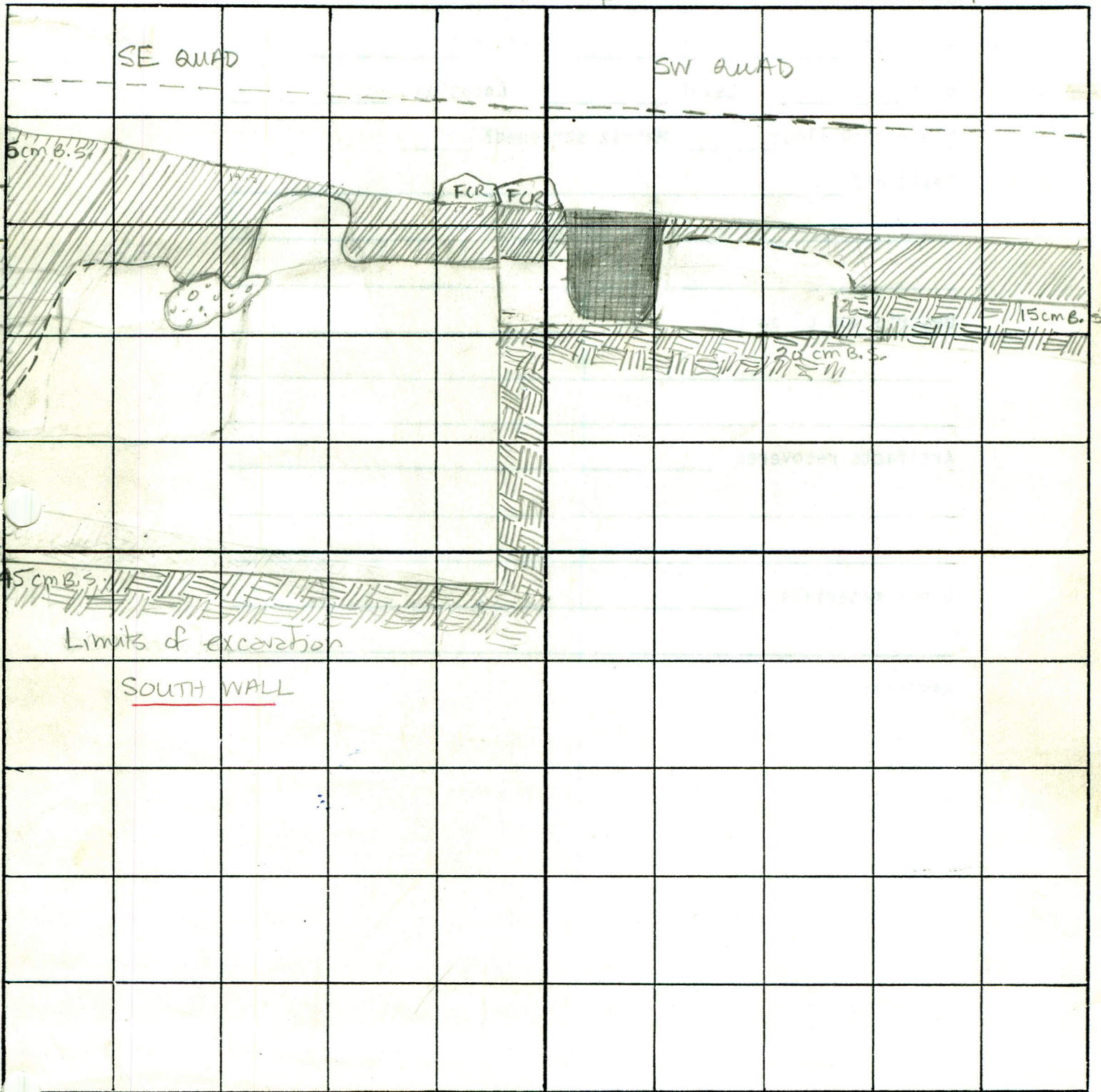
Figure 3.

(Photos: B+W - Roll 4, frame 3)
Colour - Roll 3, frame 22

F3

Grid North ↑

Scale: 1cm = 5cm



NA - top 10 cm of level removed before profile was drawn (SE quad)

▨ - dark brown, sandy loam

⊠ - rodent disturbance

□ - light tan clay; glacial deposition

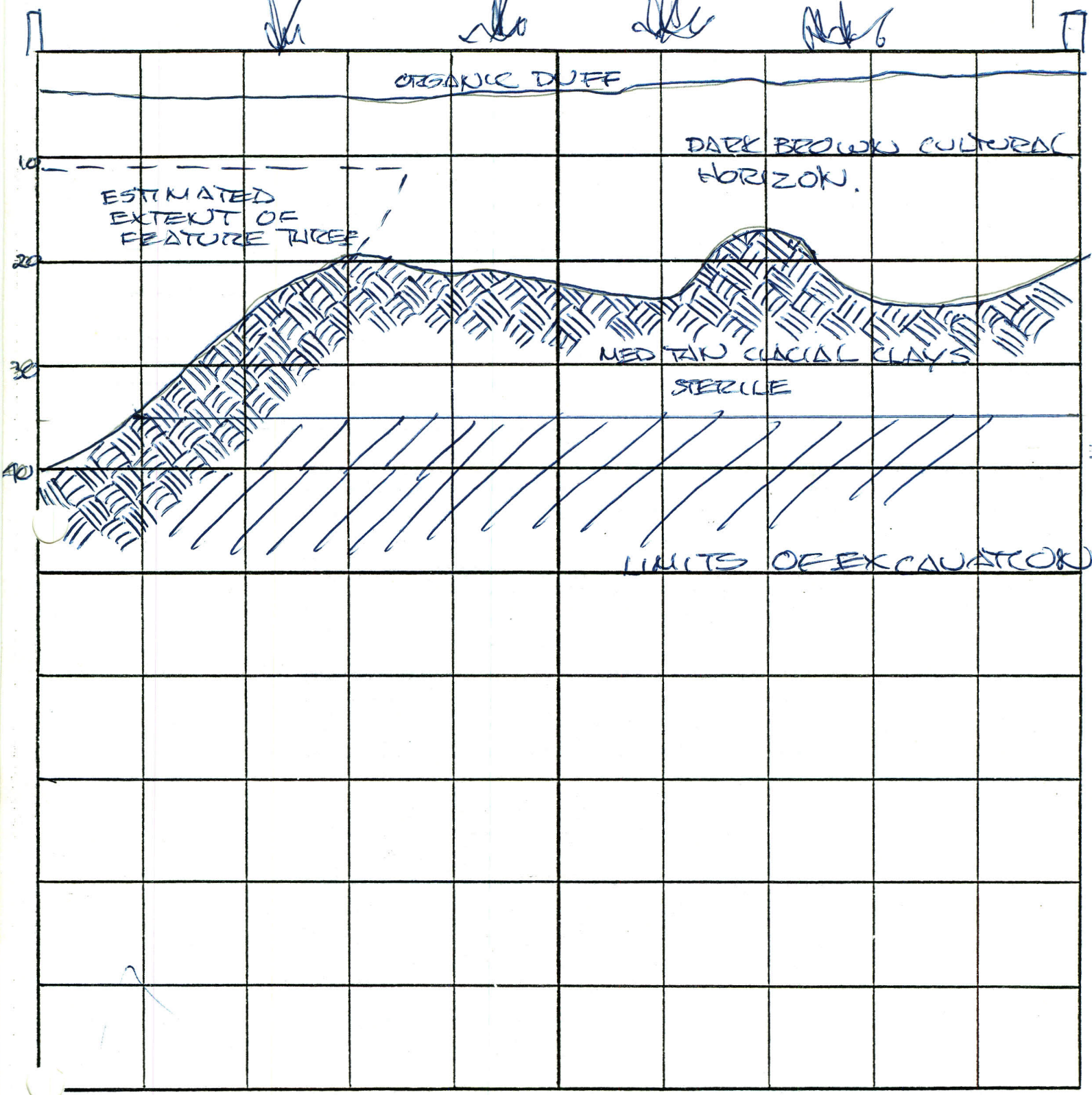
■ - disturbance

S.E. July 12/88

DJLXI BLK "E" UNIT 115 WEST WALL PROFILE
FEATURE THREE SCALE 1:5 8.7.88.



Grid North
↑



DJLX 1 BLK "E" UNITS 113-120
FEATURE THREE HORIZONTAL
EXTENT 8.VII.88

I.K.UJT

SCALE 1:10



GRID
NORTH

 BONE

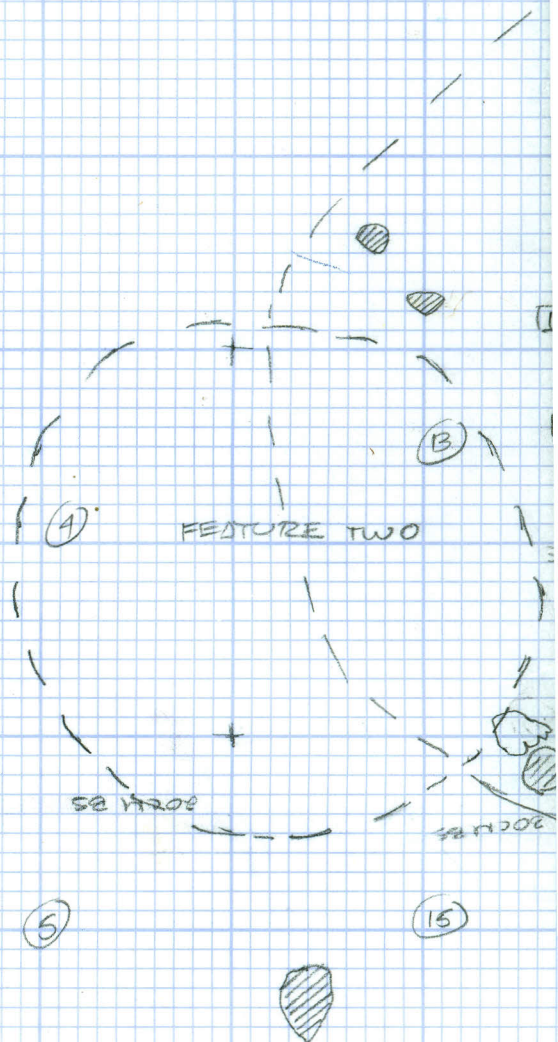
 F.C.R.

 FLAKE/CERAMIC

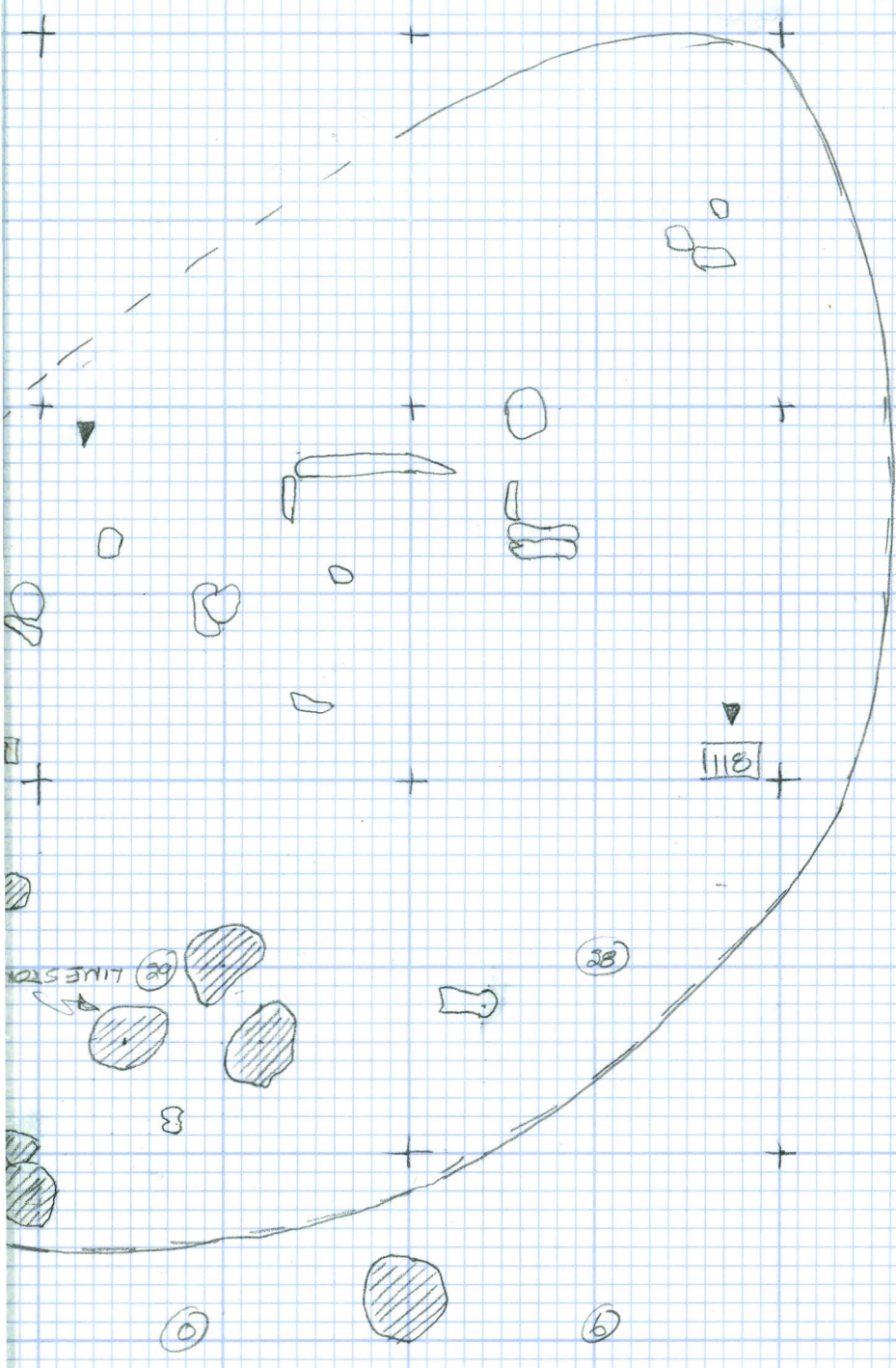
 QUID BONE DENSITIES.

* CHECK OUT BONE DENSITIES
25-35 CM BS.

120



113



BE LIVES TO