

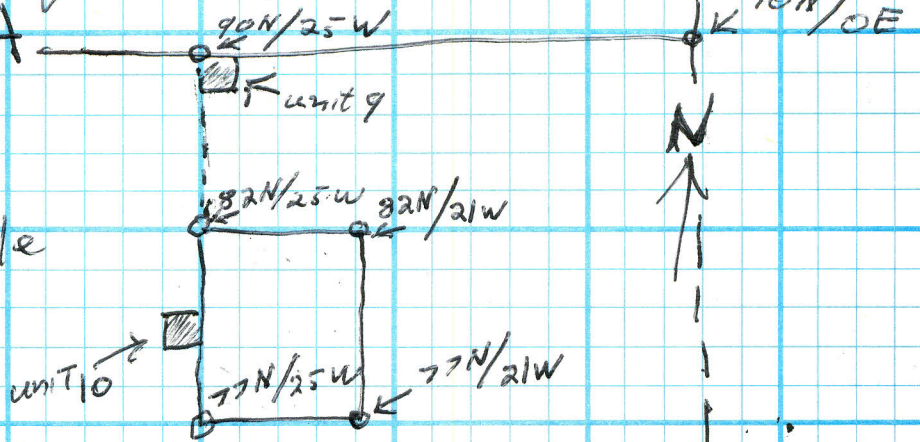
May 2/1987

Survey for SSHRC  
Blocks - LOUSTRON

B.C.M

- arrived 12:45 via Kate & Jennifer
- began surveying in large excavation blocks
- BLOCK #A

Not to  
Scale



Units 25-44

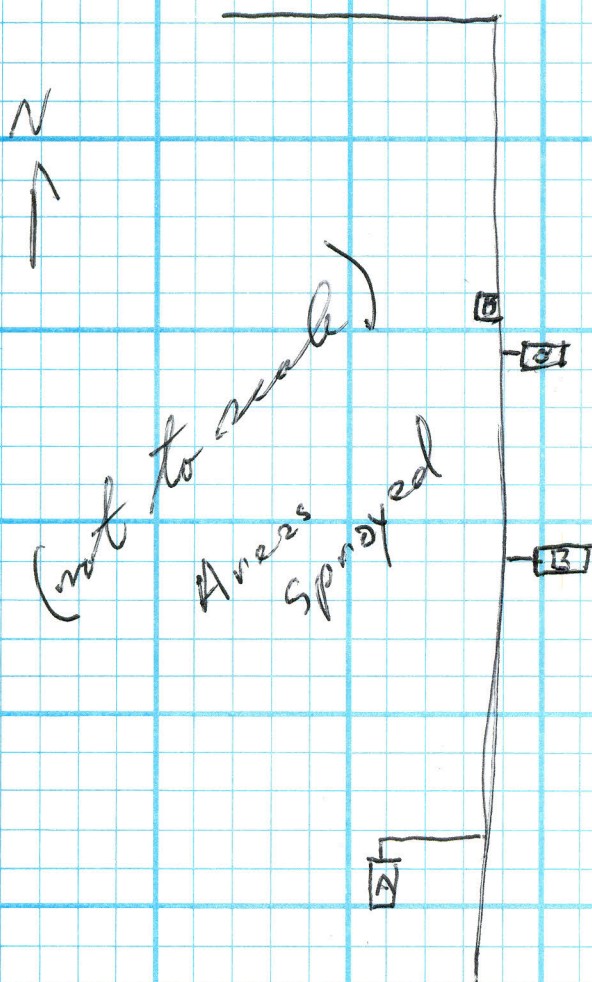
May 18/87

LOVSTROM

B.A.M.

Hylvia & Bev came out to the Lovstrom site to spray poison ivy. Did N/s baseline and areas to be excavated at A, B, C & D. A cloudy day - hope it doesn't rain.

Surface collected identifiable large ungulate bone, redeposited on field. 27



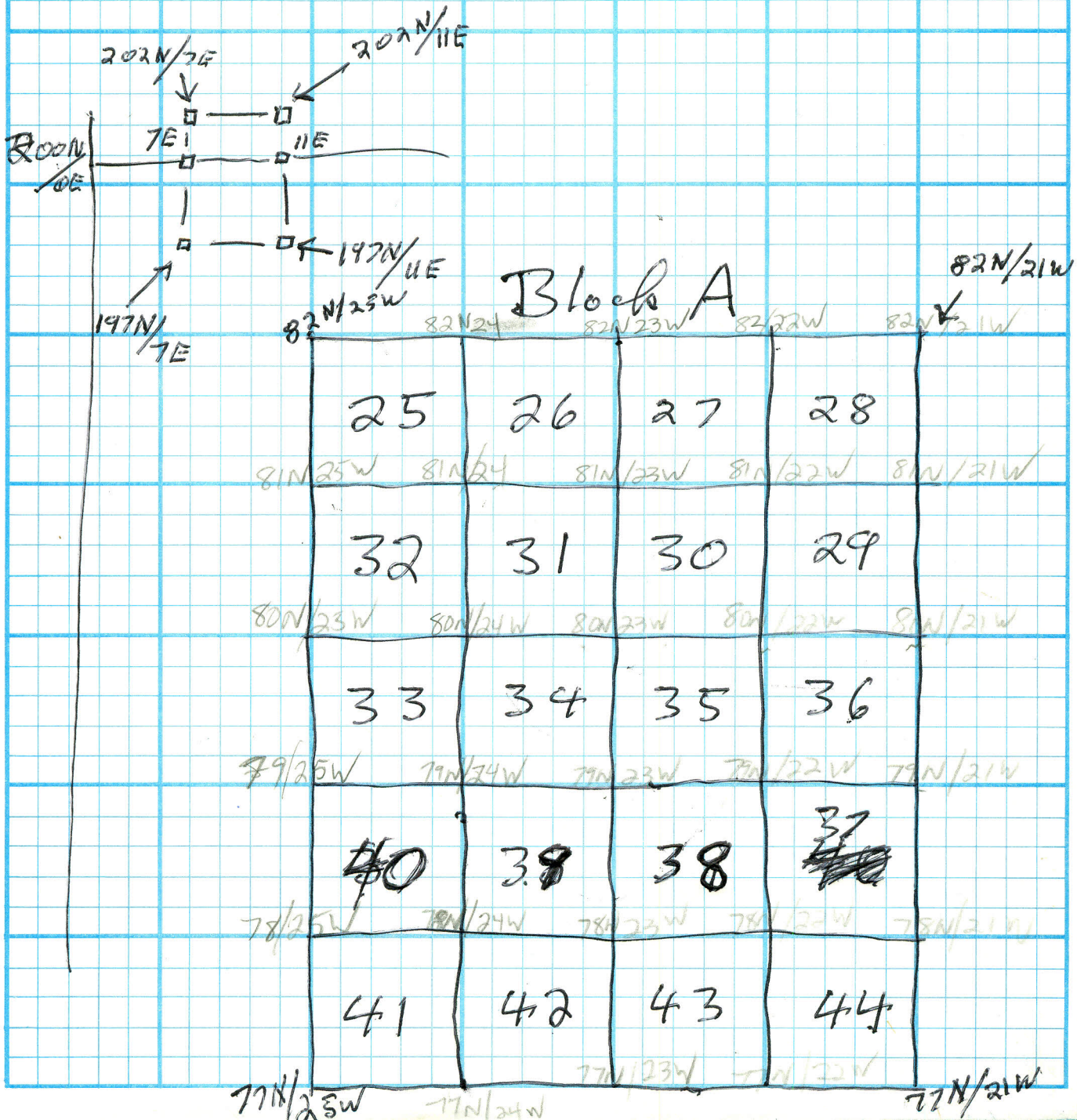
May 23/87

B.C.N

DjLx-1

Arrived at Houston 2:30 P.M.

- cleared site "B" and surveyed in units



~~XXXXXXXXXX~~  
~~XXXXXXXXXX~~  
~~XXXXXXXXXX~~  
BLOCK "B"

~~XXXXXXXXXX~~  
~~XXXXXXXXXX~~  
DjLx-1

45	46	47	48
52	51	50	49
53	54	55	56
60	59	58	57
61	62	63	64

202N/7E

202N/11E

Baseline

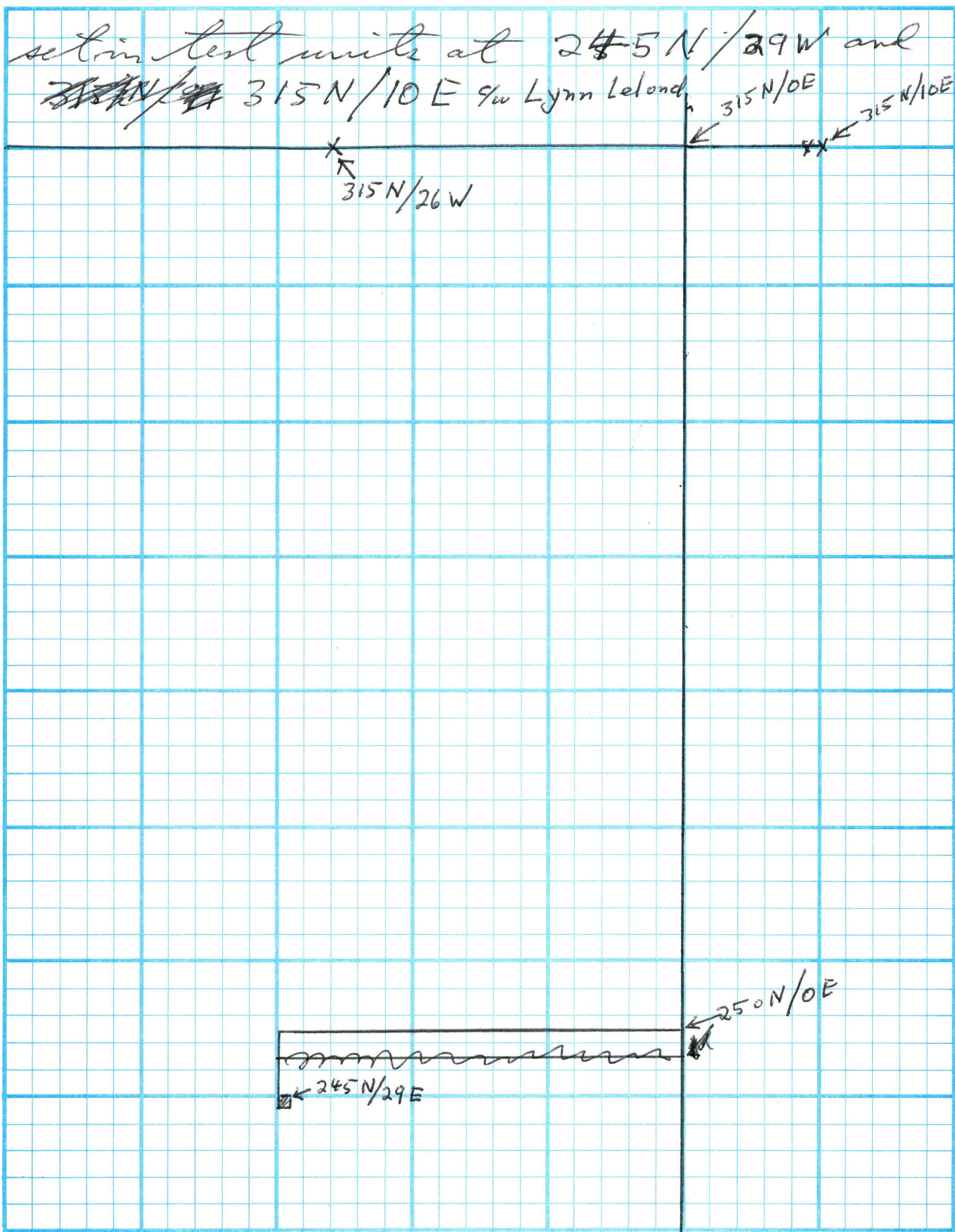
197N/7E

197N/11E

D.A.N

June 15/87

section test units at 245 N/29 W and  
~~315 N/10 E~~ 315 N/10 E 9w Lynn Leland



315 N/26 W

315 N/10 E

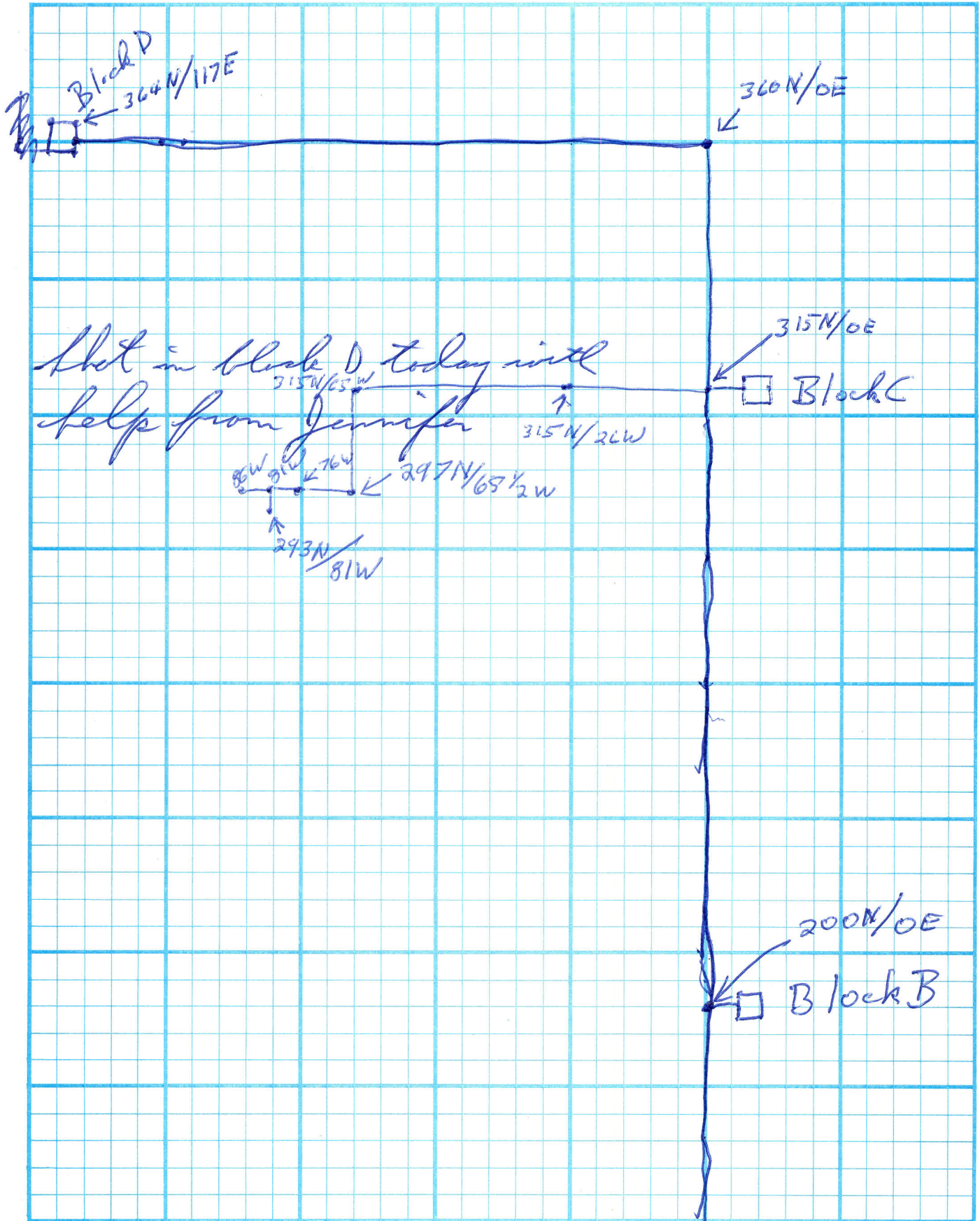
315 N/10 E

250 N/0 E

245 N/29 E

July 6/87

B.A.N.



Aug 5/97

B.D. 21

Arrived 9:30 A.M. at D/Lx-1 for Jennifer


Opened unit 107

- numerous flakes in level 1 and some identifiable
- bone obliterated fabric impressed slabs
- prox. end of metatarsal in SW corner of unit
- scatter of small/medium F.C.R.

August 31/97

Arrived for Jennifer 11:00 A.M.

honeyed road cut east of Lovstrom buildings

- found a well made KRF biface  and two flakes - abundant bone including some articulated vertebrae

- Designated area **S-3-0**

- found large pits east of Belton building in garden patch
- made up column sample boxes

May 30/1988

B. C. 27

Elevations/Distance at Loustroom				
Turning Point	Station	Rod Interval	Rod Reading	Δ
H.I. 140cm	0/0	0/30N	.93	0
"	"	0/60N	.72	0
0/0	0/90N		1.60	+1°
0/91N	30W/91N		.96	0
H.I.	"	43W/91N	.82	+1°
B.S.	"	0/0	2.92	0
"	"	0/120N	.37	+2°
B.S.	0/121N	0/90N	2.57	-2°
"	"	0/150N	1.92	0
0/121N	0/180N		3.38	0
"	0/210N		1.28	0
"	<del>0/121N</del>		.75	0
B.S.	0/201N	0/180N	1.91	0
"	"	30E/201N	1.40	-1°
"	"	60E/201N	.64	-1°
"	"	0/240N	1.15	-1°
"	"	0/270N	.79	0
"	"	0/300N	.70	0
B.S.	0/300N	0/240N	1.89	-30'
0/300N	0/315N		2.41	-1°
"	0/330N		2.51	-1°
0/300N	0/360N		1.66	0
"	0/361N		1.63	0
B.S.	0/361N	0/300N	1.34	0
"	"	0/391N	1.62	0
"	"	30W/361N	1.91	-2°
"	"	60W/361N	1.19	-3°
"	"	90W/361N	.82	-3°
B.S.	90W/361N	0W/361N	1.17	+2°
"	"	120W/361N	1.72	-3°