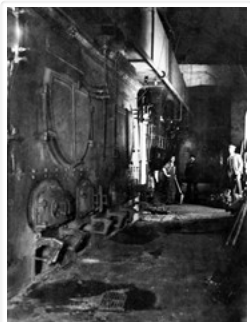


S. J. McKee Archives



Boiler Room of CPR Roundhouse

<http://archives.brandonu.ca/en/permalink/descriptions9961>

Part Of: RG 11 Lawrence Stuckey fonds

Creator: Norman Schiedel

Description Level: Item

Series Number: 3.1

Item Number: 1-2002.3.1P35

Accession Number: 1-2002

GMD: graphic

Date Range: [191-?]

Physical Description: 3 1/2" x 5"

Material Details: Negative

Custodial History:

For custodial history see the collection level description of the Lawrence Stuckey collection.

Scope and Content:

Boiler Room of CPR Roundhouse, Brandon, Manitoba

Notes: Copy LAS

From Mrs. James Schiedel

[Mr. Stuckey did not number this envelope. However he filed it in this location and therefore we have numbered it P35.]

Name Access: CPR Roundhouse Interior

CPR Engine Terminal

Subject Access: railroads

railways

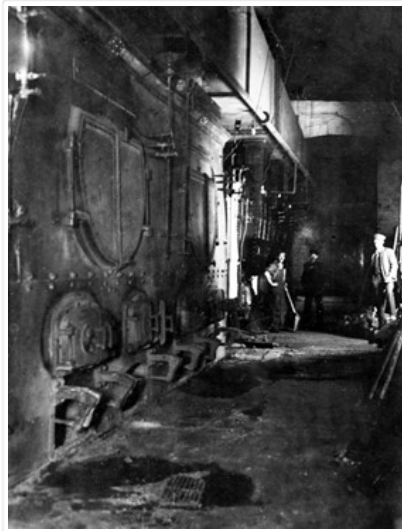
locomotives

Canadian Pacific Railway in Brandon

Repro Restriction: The McKee Archives is the copyright holder for the Stuckey materials.

Storage Location: Lawrence Stuckey collection

Images



Canadian Pacific and Great Northern Stations and Yards in Brandon

<http://archives.brandonu.ca/en/permalink/descriptions9999>

Part Of: RG 11 Lawrence Stuckey fonds

Description Level: Item

Series Number: 3.1

Item Number: 1-2002.3.1PE22

Accession Number: 1-2002

GMD: graphic

Date Range: [ca. 1912]

Physical Description: 3 1/2" x 5"

Material Details: Negative

History /

Biographical:

According to Stuckey and Bain (1996), "The Brandon, Saskatchewan & Hudson's Bay Railway was built and operated as a totally owned subsidiary of the Great Northern Railway. Construction commenced in late 1905 and by the end of 1905, less than a mile of track had been laid north of the boundary at St. John. In 1906, the remaining 68.6 miles to Brandon were laid and service commenced that year. During the Depression of the 1930s, traffic declined significantly and the entire branch was abandoned in 1936. Over much of the branch's length, the ties and rails were laid on the prairie without ballast and today little remains of the line apart from traces where there were cuts and bridges." (p. 18)

Stuckey, L. A., & Bain, D. M. (1996). The Great Northern and Northern Pacific railways in Canada. Calgary, Alberta: British Railway Modellers of North America.

Custodial History:

For custodial history see the collection level description of the Lawrence Stuckey collection.

Scope and Content:

Canadian Pacific (left) and Great Northern (right) railway stations and yards in Brandon, Manitoba.

Notes: [This negative appears to have been produced using a previously published image. P.E. 30/07/09]

Name Access: Brandon Skyline
Brandon, Saskatchewan & Hudson's Bay Railway
Great Northern Railway
Great Northern Railway stations

Subject Access: railroads
railways
railway stations
Great Northern Railway from Church's Ferry ND to Brandon MB

Repro Restriction: The McKee Archives is the copyright holder for the Stuckey materials.

Storage Location: Lawrence Stuckey collection

Images



Canadian Pacific and Great Northern Yards and Station in Brandon

<http://archives.brandonu.ca/en/permalink/descriptions10000>

Part Of: RG 11 Lawrence Stuckey fonds

Description Level: Item

Series Number: 3.1

Item Number: 1-2002.3.1PE23

Accession Number: 1-2002

GMD: graphic

Date Range: [1913?]

Physical Description: 3 1/2" x 5"

Material Details: Negative

History /

Biographical:

According to Stuckey and Bain (1996), "The Brandon, Saskatchewan & Hudson's Bay Railway was built and operated as a totally owned subsidiary of the Great Northern Railway. Construction commenced in late 1905 and by the end of 1905, less than a mile of track had been laid north of the boundary at St. John. In 1906, the remaining 68.6 miles to Brandon were laid and service commenced that year. During the Depression of the 1930s, traffic declined significantly and the entire branch was abandoned in 1936. Over much of the branch's length, the ties and rails were laid on the prairie without ballast and today little remains of the line apart from traces where there were cuts and bridges." (p. 18)

Stuckey, L. A., & Bain, D. M. (1996). The Great Northern and Northern Pacific railways in Canada. Calgary, Alberta: British Railway Modellers of North America.

Custodial History:

For custodial history see the collection level description of the Lawrence Stuckey collection.

Scope and Content:

View of Canadian Pacific (foreground) and Great Northern (background) railway yards, as well as Great Northern station in Brandon, Manitoba.

Notes:

Shows a 500 series F-1 class 2-8-0 engine switching

Published in Canadian Rail, August 1975

Buildings that are visible in this photo, but now gone (1987), include Codvilles, Western Grocers (Burbridge Saddlery), John E. Smith Block, Federal building, City Hall, and the Prince Edward Hotel [Fred McGuinness collection (20-2009)].

[This copy negative was produced using a previously published image. P.E. 30/07/09]

Name Access:

Brandon Skyline

Brandon, Saskatchewan & Hudson's Bay Railway

Great Northern Railway

Great Northern Railway stations

Subject Access:

railroads

railways

railway stations

freight trains

locomotives

Great Northern Railway from Church's Ferry ND to Brandon MB

Repro Restriction:

The McKee Archives is the copyright holder for the Stuckey materials.

Storage Location:

Lawrence Stuckey collection

Images





CNR Engine 1346 After Storm

<http://archives.brandonu.ca/en/permalink/descriptions9968>

Part Of: RG 11 Lawrence Stuckey fonds

Creator: L.A. Stuckey

Description Level: Item

Series Number: 3.1

Item Number: 1-2002.3.1PC6(2)

Accession Number: 1-2002

GMD: graphic

Date Range: June 19, 1941

Physical Description: 3 1/2" x 5"

Material Details: Negative

Custodial History:

For custodial history see the collection level description of the Lawrence Stuckey collection.

Scope and Content:

Engine 1346 in badly damaged CNR roundhouse after a storm

Notes: Image from a combined copy negative by LAS.

Name Access: CNR Roundhouse
CNR Engine Terminal

Subject Access: railroads
railways
locomotives
Canadian National Railways in Brandon - Early

Repro Restriction: The McKee Archives is the copyright holder for the Stuckey materials.

Storage Location: Lawrence Stuckey collection

Images





CNR Engine Terminal

<http://archives.brandonu.ca/en/permalink/descriptions9963>

Part Of: RG 11 Lawrence Stuckey fonds

Creator: George H. Harris

Description Level: Item

Series Number: 3.1

Item Number: 1-2002.3.1PC2

Accession Number: 1-2002

GMD: graphic

Date Range: 1937

Physical Description: 3 1/2" x 5"

Material Details: Negative

Custodial History:

For custodial history see the collection level description of the Lawrence Stuckey collection.

Scope and Content:

Canadian National Railways engine terminal, Brandon.

Notes: Engines left to right: 1345, 1267, 2728, 2637, 1392, 2407

Copy negative

[Located just west of First Street; Looking west. P.E. 28/07/09]

Name Access: CNR Engine Terminal

Subject Access: railroads

railways

locomotives

Canadian National Railways in Brandon - Early

Repro Restriction: The McKee Archives is the copyright holder for the Stuckey materials.

Storage Location: Lawrence Stuckey collection

Images





CNR Engine Terminal

<http://archives.brandonu.ca/en/permalink/descriptions9964>

Part Of: RG 11 Lawrence Stuckey fonds

Creator: George H. Harris

Description Level: Item

Series Number: 3.1

Item Number: 1-2002.3.1PC3

Accession Number: 1-2002

GMD: graphic

Date Range: 1938

Physical Description: 3 1/2" x 5"

Material Details: Negative

Custodial History:

For custodial history see the collection level description of the Lawrence Stuckey collection.

Scope and Content:

Canadian National Railways engine terminal, Brandon.

Notes: Copy negative

From the collection of George H. Harris, Winnipeg, Manitoba

[Looking west towards First Street crossing. P.E. 28/07/09]

Name Access: CNR Engine Terminal

Subject Access: railroads

railways

locomotives

Canadian National Railways in Brandon - Early

Repro Restriction: The McKee Archives is the copyright holder for the Stuckey materials.

Storage Location: Lawrence Stuckey collection

Images





CNR First Street Engine Terminal

<http://archives.brandonu.ca/en/permalink/descriptions9975>

Part Of: RG 11 Lawrence Stuckey fonds

Creator: L.A. Stuckey

Description Level: Item

Series Number: 3.1

Item Number: 1-2002.3.1PD3

Accession Number: 1-2002

GMD: graphic

Date Range: June 30, 1992

Physical Description: 2 1/2" x 2 1/2"

Material Details: Negative

Custodial History:

For custodial history see the collection level description of the Lawrence Stuckey collection.

Scope and Content:

Canadian National Railways engine terminal, Brandon.

Notes: [Located just west of First Street; Looking west. P.E. 29/07/09]

[Mr. Stuckey did not number this envelope, however he filed it in this location. We have numbered it PD3.]

Name Access: CNR Engine Terminal

Subject Access: railroads

railways

locomotives

Canadian National Railway in Brandon - Later

Repro Restriction: The McKee Archives is the copyright holder for the Stuckey materials.

Storage Location: Lawrence Stuckey collection

Images



CNR Passenger Train at Brandon Station

<http://archives.brandonu.ca/en/permalink/descriptions9973>

Part Of: RG 11 Lawrence Stuckey fonds

Description Level: Item

Series Number: 3.1
Item Number: 1-2002.3.1PD2
Accession Number: 1-2002
GMD: graphic
Date Range: October 11, 1959
Physical Description: 3 1/2" x 5"
Material Details: Negative

History /
Biographical:

[According to Mr. Stuckey] it snowed continuously from Oct. 7 to 10th, giving [Brandon] the heaviest snowfall ever recorded in October - must have been about 40".

Custodial History:

For custodial history see the collection level description of the Lawrence Stuckey collection.

Scope and Content:

Canadian National Railway [passenger train] No. 6, with engines 1905 and 1906, in snow at station.

Notes: In this photo CNR No. 6 Edmonton-Regina-Winnipeg is running 10 hours late as an Extra train

[Note that the train has backed into the station located on Ninth Street, adjacent to the Prince Edward Hotel. P.E. 28/07/09.]

Name Access: CNR Station
Prince Edward Hotel

Subject Access: railroads
railways
railway stations
locomotives
passenger trains
Canadian National Railway in Brandon - Later

Repro Restriction: The McKee Archives is the copyright holder for the Stuckey materials.

Storage Location: Lawrence Stuckey collection

Images





CNR Roundhouse After Storm

<http://archives.brandonu.ca/en/permalink/descriptions9967>

Part Of: RG 11 Lawrence Stuckey fonds

Creator: L.A. Stuckey

Description Level: Item

Series Number: 3.1

Item Number: 1-2002.3.1PC6(1)

Accession Number: 1-2002

GMD: graphic

Date Range: June 19, 1941

Physical Description: 3 1/2" x 5"

Material Details: Negative

Custodial History:

For custodial history see the collection level description of the Lawrence Stuckey collection.

Scope and Content:

CNR roundhouse after a storm

Notes: Image from a combined copy negative by LAS.

Name Access: CNR Roundhouse

CNR Engine Terminal

Subject Access: railroads

railways

Canadian National Railways in Brandon - Early

Repro Restriction: The McKee Archives is the copyright holder for the Stuckey materials.

Storage Location: Lawrence Stuckey collection

Images





CNR Station at Brandon North

<http://archives.brandonu.ca/en/permalink/descriptions9966>

Part Of: RG 11 Lawrence Stuckey fonds

Description Level: Item

Series Number: 3.1

Item Number: 1-2002.3.1PC5

Accession Number: 1-2002

GMD: graphic

Date Range: [ca. 1940]

Physical Description: 3 1/2" x 5"

Material Details: Negative

History /

Biographical:

[This station, located 13 km north of Brandon on the east side of PTH 10, was] built in the early 1930s to replace Knox as the CNR's mainline station for Brandon. All passenger trains stopped and buses operated between the CNR's Brandon station and Brandon North to meet all trains. It was enlarged as shown here in late 1930s, and at peak operation in the 1940s & 1950s saw six daily passenger trains 1 - 2 & 3 - 4 "Continental Limited" and 11 - 12 locals. VIA trains 3 and 4 "Supercontinental" ceased operation Nov. 15, 1981 leaving no passenger service on the former Grand Trunk Pacific mainline of CNR [at that time]. This station was demolished in the fall of 1982.

Custodial History:

For custodial history see the collection level description of the Lawrence Stuckey collection.

Scope and Content:

CNR Station at Brandon North

Name Access: CNR Station

Subject Access: railroads

railways

railway stations

Canadian National Railways in Brandon - Early

Repro Restriction: The McKee Archives is the copyright holder for the Stuckey materials.

Storage Location: Lawrence Stuckey collection

Images





CNR Terminal Building

<http://archives.brandonu.ca/en/permalink/descriptions9974>

Part Of: RG 11 Lawrence Stuckey fonds

Creator: L.A. Stuckey

Description Level: Item

Series Number: 3.1

Item Number: 1-2002.3.1PD4(1)

Accession Number: 1-2002

GMD: graphic

Date Range: March 1, 1992

Physical Description: 2 1/2" x 2 1/2"

Material Details: Negative

Custodial History:

For custodial history see the collection level description of the Lawrence Stuckey collection.

Scope and Content:

Canadian National Railway terminal building.

Notes: [Building located just west of First Street.]

[Although filed in this location, Mr. Stuckey did not number this envelope. There were two negatives contained within it; we have separated and numbered them PD4(1) and PD4(2). P.E.]

Name Access: CNR Terminal Building

CNR Station

Subject Access: railroads

railways

railway stations

Canadian National Railway in Brandon - Later

Repro Restriction: The McKee Archives is the copyright holder for the Stuckey materials.

Storage Location: Lawrence Stuckey collection

Images





CNR Terminal Building

<http://archives.brandonu.ca/en/permalink/descriptions9976>

Part Of: RG 11 Lawrence Stuckey fonds

Creator: L.A. Stuckey

Description Level: Item

Series Number: 3.1

Item Number: 1-2002.3.1PD4(2)

Accession Number: 1-2002

GMD: graphic

Date Range: March 1, 1992

Physical Description: 2 1/2" x 2 1/2"

Material Details: Negative

Custodial History:

For custodial history see the collection level description of the Lawrence Stuckey collection.

Scope and Content:

Canadian National Railway terminal building.

Notes: [Building located just west of First Street.]

[Although filed in this location, Mr. Stuckey did not number this envelope. There were two negatives contained within it; we have separated and numbered them PD4(1) and PD4(2). P.E.]

Name Access: CNR Terminal Building

CNR Station

Subject Access: railroads

railways

railway stations

Canadian National Railway in Brandon - Later

Repro Restriction: The McKee Archives is the copyright holder for the Stuckey materials.

Storage Location: Lawrence Stuckey collection

Images



Construction of Great Northern (BS&HB) Railway Bridge at
Bunclody - Grade



<http://archives.brandonu.ca/en/permalink/descriptions9977>

Part Of: RG 11 Lawrence Stuckey fonds

Description Level: Item

Series Number: 3.1

Item Number: 1-2002.3.1PE1

Accession Number: 1-2002

GMD: graphic

Date Range: [1905 or 1906]

Physical Description: 3 1/2" x 5"

Material Details: Negative

History /

Biographical:

According to Stuckey and Bain (1996), "The Brandon, Saskatchewan & Hudson's Bay Railway was built and operated as a totally owned subsidiary of the Great Northern Railway. Construction commenced in late 1905 and by the end of 1905, less than a mile of track had been laid north of the boundary at St. John. In 1906, the remaining 68.6 miles to Brandon were laid and service commenced that year. During the Depression of the 1930s, traffic declined significantly and the entire branch was abandoned in 1936. Over much of the branch's length, the ties and rails were laid on the prairie without ballast and today little remains of the line apart from traces where there were cuts and bridges." (p. 18)

Stuckey, L. A., & Bain, D. M. (1996). The Great Northern and Northern Pacific railways in Canada. Calgary, Alberta: British Railway Modellers of North America.

Custodial History:

For custodial history see the collection level description of the Lawrence Stuckey collection.

Scope and Content:

View of the Great Northern (BS&HB) Railway building a grade [to their bridge] at Bunclody, Manitoba.

Notes: [This railway bridge crossed the Souris River. P.E.]

From the collection of Gilford Copeland of Bunclody, Manitoba

Copy negative LAS.

Name Access: Construction of Great Northern (BS&HB) Railway
Brandon, Saskatchewan & Hudson's Bay Railway
Great Northern Railway

Subject Access: railroads
railways
manmade geographic features
construction
construction of bridges
bridges
Great Northern Railway from Church's Ferry ND to Brandon MB

Repro Restriction: The McKee Archives is the copyright holder for the Stuckey materials.

Storage Location: Lawrence Stuckey collection

[Images](#)



Construction of Great Northern (BS&HB) Railway Bridge at Bunclody - Grading Station

<http://archives.brandonu.ca/en/permalink/descriptions9978>

Part Of: RG 11 Lawrence Stuckey fonds

Description Level: Item

Series Number: 3.1

Item Number: 1-2002.3.1PE2

Accession Number: 1-2002

GMD: graphic

Date Range: [1905 or 1906]

Physical Description: 3 1/2" x 5"

Material Details: Negative

History /

Biographical:

According to Stuckey and Bain (1996), "The Brandon, Saskatchewan & Hudson's Bay Railway was built and operated as a totally owned subsidiary of the Great Northern Railway.

Construction commenced in late 1905 and by the end of 1905, less than a mile of track had been laid north of the boundary at St. John. In 1906, the remaining 68.6 miles to Brandon were laid and service commenced that year. During the Depression of the 1930s, traffic declined significantly and the entire branch was abandoned in 1936. Over much of the branch's length, the ties and rails were laid on the prairie without ballast and today little remains of the line apart from traces where there were cuts and bridges." (p. 18)

Stuckey, L. A., & Bain, D. M. (1996). The Great Northern and Northern Pacific railways in Canada. Calgary, Alberta: British Railway Modellers of North America.

Custodial History:

For custodial history see the collection level description of the Lawrence Stuckey collection.

Scope and Content:

View of the Great Northern (BS&HB) Railway building a grade [to their bridge] at Bunclody, Manitoba.

Notes: Grading station site

From the collection of Gilford Copeland of Bunclody, Manitoba

Copy negative LAS.

Name Access: Construction of Great Northern (BS&HB) Railway
Brandon, Saskatchewan & Hudson's Bay Railway
Great Northern Railway

Subject Access: railroads
 railways
 manmade geographic features
 construction
 construction of bridges
 bridges
 Great Northern Railway from Church's Ferry ND to Brandon MB

Repro Restriction: The McKee Archives is the copyright holder for the Stuckey materials.

Storage Location: Lawrence Stuckey collection

Images



CPR 18th Street crossing & signal tower

<http://archives.brandonu.ca/en/permalink/descriptions9943>

Part Of: RG 11 Lawrence Stuckey fonds

Creator: L.A. Stuckey

Description Level: Item

Series Number: 3.1

Item Number: 1-2002.3.1P20(1)

Accession Number: 1-2002

GMD: graphic

Date Range: 1962

Physical Description: 2 1/2" x 2 1/2"

Material Details: Negative

History /

Biographical:

The Towerman controlled the crossing gates, [as well as] switches and signals for all routes into and out of the station and freight yards. [Mr. Stuckey's] grandfather, Samuel Gilmour, operated the previous tower for many years (which only operated the crossing gates), and continued to operate the new tower for several years after it was built (ca. 1929). This tower was made obsolete with the installation of Centralized Traffic Control in 1965.

Custodial History:

For custodial history see the collection level description of the Lawrence Stuckey collection.

Scope and Content:

Canadian Pacific Railway's 18th Street crossing & signal tower.

Notes: Photo taken just before construction started on overpass
For a better picture of this tower see photo No. 53 (engine 2911) in CPR steam trains file

Name Access: CPR crossing & signal towers

Subject Access: crossing towers
signal towers
railroads
railways
Canadian Pacific Railway in Brandon

Repro Restriction: The McKee Archives is the copyright holder for the Stuckey materials.

Location Copy: 1-2002.3.9.163

Storage Location: Lawrence Stuckey collection

Arrangement:

[Mr. Stuckey numbered two envelopes P20. We have kept the same number but designated the first envelope P20(1) and the contents of the second envelope P20(2) and P20(3).]

Images





CPR & City Centre from Brandon Brewery

<http://archives.brandonu.ca/en/permalink/descriptions9957>

Part Of: RG 11 Lawrence Stuckey fonds

Creator: George H. Harris

Description Level: Item

Series Number: 3.1

Item Number: 1-2002.3.1P31

Accession Number: 1-2002

GMD: graphic

Date Range: September 1937

Physical Description: 2 1/2" x 4 1/2"

Material Details: Negative

Custodial History:

For custodial history see the collection level description of the Lawrence Stuckey collection.

Scope and Content:

View of CPR's west yard & city centre from Brandon Brewery on Assiniboine Avenue.

Notes: Image shows CPR freight sheds & station, Great Northern station, and many core area buildings

Collection of George H. Harris, Winnipeg, Man.

Name Access: CPR Freight Train

CPR Freight Shed

Brandon Skyline

Subject Access: railroads

railways

railway stations

freight trains

industrial buildings

warehouses

Elevators

Canadian Pacific Railway in Brandon

Repro Restriction: The McKee Archives is the copyright holder for the Stuckey materials.

Location Copy: 1-2002.3.9.105

Storage Location: Lawrence Stuckey collection

Images





CPR East of Eighth Street Bridge

<http://archives.brandonu.ca/en/permalink/descriptions9934>

Part Of: RG 11 Lawrence Stuckey fonds

Creator: Davidson & Gowen

Description Level: Item

Series Number: 3.1

Item Number: 1-2002.3.1P11

Accession Number: 1-2002

GMD: graphic

Date Range: [ca. 1912]

Physical Description: 3 1/2" x 5"

Material Details: Negative

Custodial History:

For custodial history see the collection level description of the Lawrence Stuckey collection.

Scope and Content:

View of Canadian Pacific Railway, east from overhead [Eighth Street] bridge

Notes: Publicity coach of Sells-Floto Circus (foreground)

On left, a long row of domestic fuel coal sheds (many of which were later burned), Hanbury's Mill, elevators & Maple Leaf flour mill

On right, grain elevator & Hanbury Hardware (in 1985 used by Christie School Supply)

[For original plate, please see the Alf Fowler collection of the S.J. McKee Archives 6-1999.16. P.E.]

Name Access: CPR East of Eighth Street Bridge

Subject Access: railroads

railways

coal sheds

Elevators

Flour mills

passenger trains

Canadian Pacific Railway in Brandon

Repro Restriction: The McKee Archives is the copyright holder for the Stuckey materials.

Location Original: 6-1999.16

Location Copy: 1-2002.3.9.156

Storage Location: Lawrence Stuckey collection

Images





CPR Engine 144 with Miniota Passenger Train

<http://archives.brandonu.ca/en/permalink/descriptions9960>

Part Of: RG 11 Lawrence Stuckey fonds

Creator: George H. Harris

Description Level: Item

Series Number: 3.1

Item Number: 1-2002.3.1P34

Accession Number: 1-2002

GMD: graphic

Date Range: 1927

Physical Description: 2" x 3"

Material Details: Negative

Custodial History:

For custodial history see the collection level description of the Lawrence Stuckey collection.

Scope and Content:

Miniota passenger train engine 144, a 4-4-0 ["American" type], in Brandon

Notes: Small original negative

From the collection of George H. Harris, Winnipeg, Manitoba.

Name Access: CPR Engines

Subject Access: railroads

railways

locomotives

passenger trains

Canadian Pacific Railway in Brandon

Repro Restriction: The McKee Archives is the copyright holder for the Stuckey materials.

Location Copy: 1-2002.3.9.93

Storage Location: Lawrence Stuckey collection

Images



CPR Engine 2816



<http://archives.brandonu.ca/en/permalink/descriptions9959>

Part Of: RG 11 Lawrence Stuckey fonds

Creator: Rev. Soole

Description Level: Item

Series Number: 3.1

Item Number: 1-2002.3.1P33

Accession Number: 1-2002

GMD: graphic

Date Range: 1936

Physical Description: 3 1/2" x 5"

Material Details: Negative

History /

Biographical:

CPR 2816 is a class H1b Hudson-type locomotive built by Montreal Locomotive Works in December 1930. Having logged more than two million miles in active service, 2816 made its final revenue run on May 26, 1960. After a complete three-year rebuild, 2816 was restored to its original specifications with external details from the 1930/40s, and re-entered active service in 2001 as a roving ambassador for Canadian Pacific Railway. [Information from Canadian Pacific Railway's website - www.cpr.ca. P.E. 28/07/09]

First engine on CPR's western lines with smoke deflectors - aka "elephant ears".

Custodial History:

For custodial history see the collection level description of the Lawrence Stuckey collection.

Scope and Content:

CPR Engine 2816 being serviced on [passenger train] No. 3

Notes: Note image of L.A. Stuckey as 15-year-old boy in foreground

Copy negative

From the collection of the [UK] National Railway Museum, Leeman Road, York, England.

Name Access: CPR Engines

Subject Access: railroads

railways

locomotives

passenger trains

Canadian Pacific Railway in Brandon

Repro Restriction: The McKee Archives is the copyright holder for the Stuckey materials.

Storage Location: Lawrence Stuckey collection

Images





CPR Engine Terminal and Yard

<http://archives.brandonu.ca/en/permalink/descriptions9941>

Part Of: RG 11 Lawrence Stuckey fonds

Creator: L.A. Stuckey

Description Level: Item

Series Number: 3.1

Item Number: 1-2002.3.1P18

Accession Number: 1-2002

GMD: graphic

Date Range: May 1939

Physical Description: 3 1/2" x 5"

Material Details: Negative

Custodial History:

For custodial history see the collection level description of the Lawrence Stuckey collection.

Scope and Content:

Canadian Pacific Railway Engine Terminal and north side of East Yard

Notes: Note shop buildings

Image was published in Mainline Modeller magazine June 1990 p. 70-71

[Note coaling tower in centre of photo; water tower on left. P.E.]

Name Access: CPR Engine Terminal

Subject Access: railroads

railways

freight trains

locomotives

Canadian Pacific Railway in Brandon

Repro Restriction: The McKee Archives is the copyright holder for the Stuckey materials.

Location Copy: 1-2002.3.9.96; 1-2002.3.9.162

Storage Location: Lawrence Stuckey collection

Images

