

S. J. McKee Archives



Smith's Drugs

<http://archives.brandonu.ca/en/permalink/descriptions13235>

Part Of: CKX fonds
Creator: CKX
Description Level: Item
Series Number: S
Item Number: 11-2010.S35c
Accession Number: 11-2010
GMD: graphic
Date Range: after 1954
Physical Description: 5" x 4" (b/w)
Material Details: Negative

Custodial History:

See fonds level of the CKX records for custodial history.

Scope and Content:

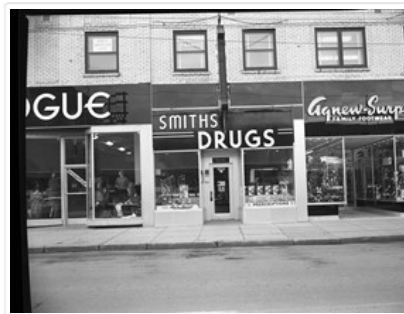
Image of the Smith's Drugs building.

Name Access: CKX
Smith's Drugs
Agnew Surpass Stores
Vogue Ladies Wear

Subject Access: businesses
building exteriors
store displays
shoe stores
drug stores
signs and signboards

Storage Location: CKX fonds - 2010 accessions

Images





Smith's Drugs

<http://archives.brandonu.ca/en/permalink/descriptions13236>

Part Of: CKX fonds
Creator: CKX
Description Level: Item
Series Number: S
Item Number: 11-2010.S35b
Accession Number: 11-2010
GMD: graphic
Date Range: after 1954
Physical Description: 5" x 4" (b/w)
Material Details: Negative

Custodial History:

See fonds level of the CKX records for custodial history.

Scope and Content:

Image of the Smith's Drugs building.

Name Access: CKX
Smith's Drugs
Agnew Surpass Stores
Vogue Ladies Wear

Subject Access: businesses
building exteriors
store displays
shoe stores
drug stores
clothing stores
signs and signboards
persons

Storage Location: CKX fonds - 2010 accessions

Images



O.L. Harwood Ltd.



<http://archives.brandonu.ca/en/permalink/descriptions13341>

Part Of: CKX fonds
Creator: CKX
Description Level: Item
Series Number: H
Item Number: 11-2010.H8b
Accession Number: 11-2010
GMD: graphic
Date Range: after 1954
Physical Description: 5" x 4" (b/w)
Material Details: Negative
Custodial History:

See fonds level of the CKX records for custodial history.

Scope and Content:

Image of the southside of the 1100 block of Rosser Avenue in winter. Visible are O.L. Harwood Ltd., the Key Kafe and Northern Auto Parts. The Perth's building, located in the 1200 block, can be seen on the righthand side in the background. A number of vehicles, a pedestrian and a man shovelling snow are also visible.

Name Access: CKX
O.L. Harwood Ltd.
Key Kafe
Northern Auto Parts
Perth's
Rosser Avenue
11th Street

Subject Access: street scenes
downtown
winter
building exteriors
real estate brokers
insurance agents
cafes
restaurants

Storage Location: CKX fonds - 2010 accessions

Images





Redeemer Lutheran Church

<http://archives.brandonu.ca/en/permalink/descriptions13528>

Part Of: CKX fonds
Creator: CKX
Description Level: Item
Series Number: R
Item Number: 11-2010.R8
Accession Number: 11-2010
GMD: graphic
Date Range: 1969
Physical Description: 1.5" x 1.5" (b/w)
Material Details: Negative

Custodial History:

See fonds level of the CKX records for custodial history.

Scope and Content:

Image of a church.

Name Access: CKX
Redeemer Lutheran Church
Subject Access: building exteriors
Church buildings
Storage Location: CKX fonds - 2010 accessions

Images



O.L. Harwood Ltd.

<http://archives.brandonu.ca/en/permalink/descriptions13927>

Part Of: CKX fonds
Creator: CKX
Description Level: Item
Series Number: H
Item Number: 11-2010.H8a
Accession Number: 11-2010
GMD: graphic

Date Range: after 1954
Physical Description: 5" x 4" (b/w)
Material Details: Negative
Custodial History:

See fonds level of the CKX records for custodial history.

Scope and Content:

Image of the southside of the 1000 and 1100 block of Rosser Avenue looking east in winter. Visible in the foreground are O.L. Harwood Ltd., and the Key Kafe. Buildings in the 1000 block include: the Imperial Bank of Canada, the original Post Office and Federal Building and the original Merchants Bank. A number of pedestrians are also visible, as are Christmas decorations on the streetlights and telephone poles.

Name Access: CKX
O.L. Harwood Ltd.
Key Kafe
Rosser Avenue
11th Street

Subject Access: street scenes
downtown
winter
building exteriors
real estate brokers
insurance agents
cafes
restaurants
banks

Storage Location: CKX fonds - 2010 accessions

Images

