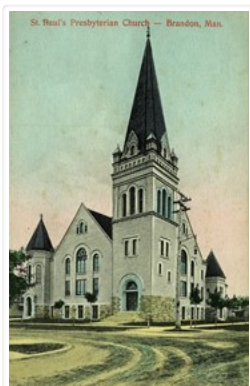


S. J. McKee Archives



St. paul's presbyterian church

<http://archives.brandonu.ca/en/permalink/descriptions8626>

Part Of: RG 11 Lawrence Stuckey fonds

Creator: S.J. Farmer, Brandon, Manitoba

Description Level: Item

Series Number: 3.9

Item Number: 1-2002.3.9.4

Accession Number: 1-2002

GMD: graphic

Date Range: [n.d.]

Physical Description: 5.5" x 3.5" (colour)

Material Details: Postcard

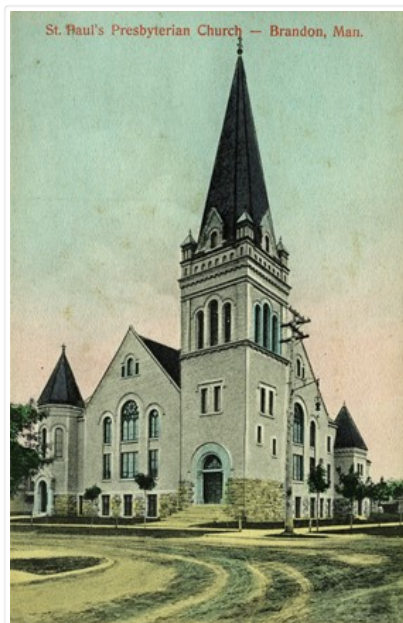
Scope and Content:

Item is a postcard. Image is of St. Paul's Presbyterian Church - Brandon, Manitoba.

Repro Restriction: The McKee Archives is the copyright holder for the Stuckey materials.

Storage Location: RG 5 photograph storage drawer

Images



McS 5 A.E. McKenzie Seed Co. Ltd. photographs



<http://archives.brandonu.ca/en/permalink/descriptions4332>

Part Of: RG 3 A.E. McKenzie Company fonds
Creator: Known creators of the records include:

PHOTOGRAPHERS AND PHOTO SERVICES:

Alan R. Mundie
Britain Photo
Davidson & Gowen - Brandon, Manitoba
Davidson Studio - Brandon, Manitoba
Dean Photo Service - Grand Junction, Colorado
Frank Gowen - Brandon, Manitoba
Gibson Photos - Saskatoon, Saskatchewan
H.H. Allen - Brandon, Manitoba
Hi-Art Artists Illustration Boards
Irene Cullen
J.H. MacDonald-Partners Ltd.
Jerrett's Photo-Art Studio/Jerrett's Photo Service - Brandon, Manitoba
Josiph Airey
Lorne Burkell - Calgary, Alberta
O.K.W.D.W.
R.M. Coleman - Brandon, Manitoba
Sandy Black - Brandon, Manitoba
Seattle Filmworks
Smith Carter Partners, Architects, Engineers, Planners
Sun Roska Photo
The Topley Studio - Ottawa, Ontario
W.B. & I.
Winsor & Newton's Illustration Boards

PRINTING SERVICES:

Crawford Drug Store - Brandon, Manitoba
Eastman Photographic Materials Ltd. - Winnipeg, Manitoba
Leech Printing Ltd. - Brandon, Manitoba

Description Level: Series
Series Number: McS 4
GMD: graphic
Date Range: 1906-1996
Physical Description: 497 photographs
2 negatives
1 slide

History /

Biographical:

Customers and employees of A.E. McKenzie Seed Co. Ltd. donated some of the records in this series. Others were taken for insurance purposes, while some of the records involve McKenzie subsidiaries. Some of the records may have been taken as advertisements or for promotional reasons. Most of the records were generated by the company itself and deal exclusively with McKenzie Seeds and its business operations or the seed industry.

Custodial History:

Photographs in sub-series 5.14, 5.15, 5.16 were donated to McKenzie Seeds by Irene Cullen, Josiph Airey, and Alan R. Mundie respectively.

See fonds level description of custodial history of A. E. McKenzie Seed Co. Ltd.

Scope and Content:

Series consists primarily of black and white photographs pertaining to A.E. McKenzie Seed Co. Ltd and the seed industry. Included are photographs of the McKenzie Building, plant and field workers and equipment, executives, particular events at McKenzie Seeds and product photographs. A complete list of categories can be found below.

The series is arranged as follows:

- 5.1 McKenzie Seed Co. Ltd. Executives
- 5.2 Construction at McKenzie Seed Co. Brandon (two files)
- 5.3 Exterior Photographs of the A. E. McKenzie Co. Building
- 5.4 McKenzie Seed Co. Plant Operations and Workers (two files)
- 5.5 McKenzie Seed Co. Equipment and Plant - Head Office 1983
- 5.6 McKenzie Seed Co. Field Operations and Workers
- 5.7 McKenzie Seed Co. Strike 1944
- 5.8 Fires at McKenzie Seed Co. 1910, 1945, 1972
- 5.9 McKenzie Seed Co. Centennial Exhibition 1996
- 5.10 Miscellaneous McKenzie Seed Co. Photographs
- 5.11 People Connected to McKenzie Seed Co.
- 5.12 Princess Anne's Visit to McKenzie Seed Co. 1982
- 5.13 Onion Set Production Book
- 5.14 Irene Cullen Photographs - McKenzie Seeds Employee Photos
- 5.15 Josiph Airey Photographs - McKenzie Product Photos
- 5.16 Alan R. Mundie Seed Production Photographs
- 5.17 Steele Robertson/Steele Briggs Seeds Photographs
- 5.18 Seed Packet Display Units Photographs
- 5.19 Product Photographs
- 5.20 Parade Photographs
- *5.21 Oversized Photographs
 - 5.21.1 Drawer #1: Executive Photographs
 - 5.21.2 Drawer #2: Office and Equipment/Plant Photographs
 - 5.21.3 Drawer #3: Miscellaneous Oversized Photographs
 - 5.21.4 Drawer #4: Artifacts

Notes: * The term "drawer" in the Scope and Content Filed for sub-series 5.21, refers to the oversized map drawers in the McKee Archives reading room.

Errol Black's article on the strike at McKenzie Seeds (sub-series 5.7) titled "25c an hour; 48 hours a week; more toilets; less cats: the labour struggles of the "girls" at the A.E. McKenzie Company in Brandon," was published in Prairie Forum, spring 1992 vol 17 no 1 pp. 33-59.

Finding Aid: An inventory is available for the artifacts, as well as each of the photograph sub-series.

Storage Location: RG 3 A.E. McKenzie Company fonds
McS 5 Photographs

Related Material:

MG 1 (A.E. McKenzie Fonds), sub-series 1 (Brandon College Inc.) of the A.E. McKenzie Seed Co. Ltd. fonds contains photographs relating to the History of Brandon College Inc. booklet.

Series 1 (Board of Directors), sub-series 5 (Financial), of the A.E. McKenzie Seed Co. Ltd. fonds contains some photographs in the file entitled Steele Briggs Spring Campaign for Edmonton. The pictures are part of a sales booklet.

Steele Briggs related photographs are located in the scrapbook in Series 3 (Acquisitions), sub-series 2 (Steele Briggs) of the A.E. McKenzie Seed Co. Ltd. fonds.



Provincial exhibition of Manitoba photographs

<http://archives.brandonu.ca/en/permalink/descriptions4361>

Part Of:

RG 2 Provincial Exhibition of Manitoba Association fonds

Creator:

Known creators of the records include:

PHOTOGRAPHERS AND PHOTO SERVICES

Ayers Photographs
Bob Evans
Donald Huskins
Earl Kennedy Specialized Photographic Services, Winnipeg, Manitoba
Ernie Tayler, Brandon, Manitoba
Frank Gowen, Brandon, Manitoba
H. M. Salisbury, Brandon, Manitoba
H. R. Hoffman Ltd., Brandon, Manitoba
Harold K. White
Hildebrand
Hungry I. Agency
Jerrett's Photo
Lawrence Stuckey, Brandon, Manitoba
Mid-Co.
Pugh Mfg. Co. Ltd., Toronto, Ontario
R. M. Coleman, Brandon, Manitoba
Smith K. C. Mo.
Stovel Co.
Turofsky, Toronto, Ontario
Western Engravings
Wilkinson Photography, Newmarket, Ontario

NEWSPAPERS

Brandon Sun, Brandon, Manitoba
Winnipeg Free Press, Winnipeg, Manitoba

PRINTING SERVICES

Leech Printing Ltd., Brandon, Manitoba
Crawford Drug Store, Brandon, Manitoba

GOVERNMENT

Department of Industry and Commerce, Manitoba
Frank Royal of the National Film Board

Description Level:	Series
Fonds Number:	RG2SF1
Series Number:	1.9
GMD:	graphic
Date Range:	1885-1988
Physical Description:	793 photographs and other graphic materials

History /

Biographical:

Many of these records were donated to the Board by exhibitors and participants in the fairs. Some are advertisements sent to the Provincial Exhibition Board by businesses such as Conklin Shows. Professional photographers, who were likely hired by the Board, generated others. As well, Brandon Sun photographers took a large number of the photos throughout the century. In the 1980s, the Sun photos were reprinted and then the reprints were added to the Exhibition's collection. Privately owned photos were also reprinted and added. Publishing houses generated some photographs, probably as services to participants and organizers of the fairs. Finally, the Canadian and Manitoba governments created a few of the photos.

Custodial History:

Exhibitors and participants in activities at the summer fair donated many of these records to the Provincial Exhibition Board. The Manitoba Provincial Archives in Winnipeg housed other records, of which the McKee Archives acquired copies. Most of the records were stored in the offices of the Provincial Exhibition Association of Manitoba until they were brought to the McKee Archives ca. 1986.

Scope and Content:

Series consists primarily of black and white photographs pertaining to the Provincial Exhibition. Subjects of the records vary over the century, but overall subjects included are buildings and grounds, horses, livestock, exhibits, youth activities, entertainment, and dignitaries. Almost all of the materials are in excellent condition.

BUILDINGS AND GROUNDS

The graphics that depict the buildings and grounds of the summer fair are both ground and aerial photos. From the records generated between 1900 and 1930, there are pictures of the Crystal Palace, the Wheat City Arena, the Experimental Farm, the horse barns, the racetrack, and the grandstand. The pictures dating from the forties through the sixties are of the racetrack, the grandstand, the Provincial Display Building, the Trade Fair Building, and the Main Gate. The records from the 1970s and the 1980s feature the Keystone Centre, cattle buildings, and horse stables.

HORSES

Graphics from the 1890s through the 1980s feature various light and heavy horses, from single horses to eight-horse teams. Pictures dating from the first fifty years of the fair are of stallion and purebred shows. Also depicted are racing events such as chuck wagon, bike, and single rider races. Graphics of equestrian events like jumping and hackney classes date from World War II until the 1980s. Dating from the fifties to the seventies are photos of children's events like costume classes and pony competitions. Finally, pictures of barrel racing and horse pulling competitions date from the 1970s and 1980s.

LIVESTOCK

Livestock photos, which date throughout the twentieth century, are mostly of cattle and swine, but there are a few pictures of buffalo and sheep. Cattle photos depict purebreds such as Holstein, Jersey, Hereford, and Angus. Swine pictures are of Yorkshire sows and boars, as well as of market hogs.

POULTRY AND EGGS

Graphics depicting poultry and egg shows date between 1950 and 1985.

EXHIBITS

Photos of exhibits taken throughout the century feature home craft displays such as clothes

Photos or exhibits taken throughout the century feature home-craft displays such as clothes and quilts. Tack rooms, farm implement shows, and club displays, like those of the Brandon Lion's Club, are also consistent throughout the period. Other graphics of exhibits are particular to certain years: in the late 1940s through the 1950s auto shows are featured; and from the fifties to the eighties commercial exhibits are prominent.

YOUTH ACTIVITIES

Graphics of children and teens' activities form a large part of MG 1. From the 1920s and 1930s, there are pictures of boys and teens who attended the Farm Boys' Camp. Photos taken at the Agricultural and Homemaking School in the late 1940s and early 1950s depict male teens learning about mechanics, welding, and electricity. Photos of female teens at the camp depict weaving, sewing, and cooking classes. In the records dating from 1957 to the 1980s, photos feature both pig and calf scrambles. As well, some pictures are of male teens participating in seed, poultry, and judging courses. Photos of female teens during these years show them participating in such activities as clothes-making, 4-H Queen contests, and fashion shows.

ENTERTAINMENT

Entertainment pictures include graphics of the midway, the carnival and travelling acts, parades, and miscellaneous events. Pictures of the midway are both aerial and ground photos, and date from 1913 to the 1970s. Ferris wheels and carousels are the main rides featured until the 1960s, after which many motorized rides like the Wild Mouse and the Tidal Wave are prominent.

Carnival pictures throughout the century include shots of aisles along which several attractions are set up. Photos of clowns and other costumed people are numerous. Graphics of travelling acts depict parachutists (1920s), follies (1950s), exotic dancers (1950s), trained animals (1950s-1970s), singers and bands (1970s-1980s), and trapeze artists (1970s).

Parade photos date throughout the century, and feature pipers, horses pulling carriages, people riding horses, clowns, soldiers, floats, and members of various clubs.

Miscellaneous events graphics include pictures of horseshoe throwing competitions, square dancing shows (1950s), fiddling contests (1970s), smash-up derbies (1980s), and tractor pulls (1980s).

FIRST NATIONS PEOPLE

There are seven photos of First Nations people at the summer fair. In all but one of the pictures, they are in traditional costume. Depicted are pow-wows, parades, a female teen sewing a mukluk, and tee-pees. These records date from 1914 to 1969.

DIGNITARIES

Pictures of dignitaries are of members of the Provincial Exhibition committees and boards; federal, provincial, and municipal politicians who attended the summer fair; and various business, medical, and judicial representatives. Especially notable are the group photos of the Board of Directors for the years 1894, 1900, 1941, 1949, 1951, 1952, and 1968.

The graphic materials of RG2SF1 are useful for many purposes. For one, they offer a rich visual history of the fair. Agricultural historians will find poultry, horse, livestock, horticultural, and farm implement images informative. Such images describe how farming has changed through the last century. The records offer many clues into the cultural history of Brandon and surrounding area. The nature of the carnival, for instance, changes. At the turn of the century, attractions of various booths were not advertised overtly; one had to pay before they were

given hints as to what they were going to view. By the Second World War, however, attractions' exteriors were more garish. Because the carnival was more open in its advertisements, one can determine that the boundaries between the private and public shifted in the first forty years of the twentieth century.

The pictorial history of the exhibits at the fair reveals much about the city's culture. The pictures from the post-World War II era, for example, are indicative of the period's climate of consumerism: a commercial display building was built and commercial exhibits were added to the displays of the fair. Also signified in the postwar photos is the emphasis upon family values that pervaded the fifties; for instance displays of home-crafts became prominent in these years.

Social historians will find in these records a vibrant portrait of the social composition of twentieth-century Brandon. The community's leaders, for example, are represented in the pictures of the Boards of Directors. From these photos, one can ascertain the social characteristics of Board members: white, male, and middle class. Parade photos are also indicative of social composition, as organizations from all classes of society participated in parades. Agricultural clubs, unions, women's organizations, and church groups are just a few of the entries featured in the parade pictures.

Historians of gender will find that throughout the fairs' years definitions of femininity changed. In the early fairs, women are shown in their booths at home shows, demonstrating their association with the private sphere. During the Second World War, some photos start to appear of women doing secretarial work. After World War II, however, gender norms constricted. Pictures of female teens taking classes at the Agricultural and Homemaking School depict them learning about how to run a well maintained home: they learn about sewing, cooking, and weaving. In the seventies, gender boundaries again shifted: for example, female teens began to participate in the previously male-only calf scramble events.

Finally, these records are useful for any historian of Brandon and area history. There are thousands of people from the region featured in these records. Different places and buildings in Brandon are also a prominent part of the collection. Together, the pictures of RG2SF1 offer a vivid history of both Brandon and the Provincial Exhibition.

Storage Location:	RG 2 Provincial Exhibition of Manitoba Association fonds RG2SF1 Provincial Exhibition of Manitoba
Related Material:	Pictures of the Provincial Exhibition may also be found on the National Archives of Canada website. The Western Canadian Pictorial Index in Winnipeg, Manitoba, houses additional graphic records of the summer fair.

Arrangement:

Item-level descriptions of the graphics of RG2SF1 through RG2SF4 are located on a searchable database. This database is entitled "Brandon Photographs" and can be read using Microsoft Access. "Brandon Photographs" is located on a 3½ floppy disk entitled "Provincial Exhibition Association of Manitoba fonds Series 9" included in this finding aid. The description of each photograph on this database includes the following information: accession number, title, date, place, physical description, scope and content, notes, creator, and copyright. By searching the database, individual photographs can be located easily. See the printed finding aid for instructions on how to use the photograph database.

Graphics for RG2SF1 through RG2SF4 are located in boxes. Graphics larger than 24 x 35 cm are located in the image mapcase, which is located in the reading room. The graphics are filed chronologically by accession number. The arrangement is as follows:

Provincial Exhibition of Manitoba Association fonds; RG2SF1-RG2SF4, Series 9
Boxes 1 through 15, as follows:

Box 1 EX0001 to EX0125
Box 2 EX0157 to EX0263
Box 3 EX0265 to EX0399
Box 4 EX0400 to EX0499
Box 5 EX0500 to EX0599
Box 6 EX0600 to EX0699
Box 7 EX0700 to EX0799
Box 8 EX0800 to EX0899
Box 9 EX0900 to EX0921
Box 10 EX1000 to EX1099
Box 11 EX1100 to EX1199
Box 12 EX1200 to EX1299
Box 13 EX1300 to EX1399
Box 14 EX1400 to EX1499
Box 15 EX1549 to EX1859



Manitoba winter fair photographs

<http://archives.brandonu.ca/en/permalink/descriptions4373>

Part Of: RG 2 Provincial Exhibition of Manitoba Association fonds

Creator:

Known creators of the records include:

PHOTOGRAPHERS AND PHOTO SERVICES

Aberdeen-Angus Cattle Society
Allen Photo
Avalanche Photographics
Benny Mighall
Canada Pictures Ltd., Toronto, Ontario
CKX-TV, Brandon, Manitoba
Ernie Tayler
Fred's Photo Finishing, Brandon, Manitoba
Gilbert A. Milne Photography
H. M. Salisbury, Brandon, Manitoba
H. W. Doleman, Brandon, Manitoba
Harold K. White, Winnipeg, Manitoba
Holstein-Friesian Journal
Jack Hiebert
Jerrett's Photo, Brandon, Manitoba
Jim Rose, Livestock Photographer, Toronto, Ontario
Ken Bullock, Brandon, Manitoba
Leech Printing Ltd., Brandon, Manitoba
Novelty Manufacturing
Photo Studios of Bulman Brothers, Ltd., Winnipeg, Manitoba
R. M. Coleman, Free Lance Photographer, Brandon, Manitoba
R. M. McNaught, Hamilton, Ontario
Rabinsky
Sargent, Memphis, Tennessee
Singer Studio, Britton, South Dakota
Strohmeyer
Verna Allison, Beechy, Saskatchewan
Wilkinson's Photography, Newmarket, Ontario

NEWSPAPERS AND PRINTING SERVICES

Winnipeg Free Press, Winnipeg, Manitoba
Brandon Sun, Brandon, Manitoba
Leech Printing Ltd., Brandon, Manitoba

GOVERNMENT

Frank Royal for the National Film Board of Canada

Description Level:

Series

Fonds Number:

RG2SF2

Series Number:

2.9

GMD:

graphic

Date Range:

1902-1984

Physical Description:

780 photographs and other graphic materials

History /

Biographical:

Exhibitors and participants in the fairs donated many of these records to the Winter Fair Board. Professional photographers, hired by the Board, generated others. As well, Brandon Sun photographers took a large number of photos throughout the twentieth century. In the 1980s, the Board reprinted them and then added the reproductions to their own photograph collection. Publishing houses generated some photographs, probably as services to participants and organizers of the fairs. Finally, the Canadian government created a few of the photos.

Custodial History:

Exhibitors and participants in activities at the winter fair donated many of these records to the Winter Fair Board. The Manitoba Provincial Archives housed other records and later transferred them to the McKee Archives. Most of the records were stored in the offices of the Provincial Exhibition Association of Manitoba until they were brought to the McKee Archives ca. 1986.

Scope and Content:

Series consists primarily of black and white photographs either taken at the Winter Fair or owned by the Winter Fair Board. Subjects included are buildings and grounds, horses, livestock, poultry and eggs, exhibits, youth activities, entertainment, and dignitaries. Almost all of the materials have been excellently preserved.

BUILDINGS AND GROUNDS

Several of the pictures of the buildings and grounds are aerial photos; these date from 1949 through the 1980s. Photos taken between 1908 and 1952 depict the winter fair building, the livestock arena, the Wheat City Arena, the horse barns, and the swine barn. Photos taken from the 1960s to the early 1980s show horse barns, the Keystone Centre, and quonsets.

HORSES

Photos of horses and horse events comprise the largest number of the graphics of RG2SF2. Unlike other winter fair pictures, types of horse photos do not change throughout the twentieth century. There are many pictures of heavy horses, including Clydesdales, Belgians, and Percherons. They are usually in harness and in teams of two, four, six, and eight. They pull wagons, landaus, and carts. Heavy horses appear in photos of shows, sales, parades, ceremonies, and draft horse competitions.

Light horse photos are also numerous. There are many photos of owners and drivers with award-winning horses. Depictions of races form a prominent part of the light horse pictures; these include portrayals of chuck wagon, chariot, bike, and barrel races. Also featured are competitions like cutting, jumping, pole bending, western riding, musical chairs, hackney, costume, unicorn, and fault and out. Finally, there are many photos of ponies, including hackney, harness, and pleasure ponies.

LIVESTOCK

There are three types of livestock shown in the photos of RG2SF2: cattle, swine, and sheep. Depicted are both sales and shows of these animals. As well, there are pictures of these animals' carcasses.

In the first forty years of the fair, people took few pictures of cattle, but after World War II, pictures of cattle became a prominent part of the Winter Fair Board's graphic records. Featured are purebred cattle such as Angus, Hereford, Shorthorn, and Simmental. Dairy cows like Jersey and Holstein-Friesian are also notable. Some pictures depict people grooming their cattle.

Photos of swine date from 1927 through the 1980s, and include Yorkshire sows and boars, as well as market hogs. Sheep are depicted throughout the twentieth century. While most sheep photos are of shows and sales, there are some photos of sheep-shearing contests taken in the 1950s.

POULTRY AND EGGS

Poultry photos date between the 1950s and the 1970s. Featured are both chickens and game birds. Pictures of egg shows and competitions date from 1966 through the 1980s.

EXHIBITS

There are four types of exhibit photos: commercial, award, seed, and Baby Fair. Commercial exhibits date from the 1940s through the 1980s. They feature agricultural implements made by Ford, John Deere, Massey Ferguson, and Case. Photos dating from the 1970s depict commercial booths owned by such companies as Badger and Sprayer Monitor.

Award exhibits date throughout the twentieth century, and feature ribbons, plaques, and trophies. Placed on tables, these awards are mostly for winners in horse and livestock competitions.

Seed exhibits date from the 1950s through the 1970s. Included in the seed exhibit pictures are prize-winning wheat, potato, and canola seed pictures.

Baby Fair, or petting zoo, photos comprise a large portion of the graphic records of MG 2. Dating primarily from the 1970s, Baby Fair pictures depict chicks, pups, lambs, piglets, and other baby animals.

YOUTH ACTIVITIES

Most of the youth activities' photos are of calf and pig scrambles, and date from the 1950s through the 1980s. 4-H Club activities are prominent, and include pictures of boys and male teens learning how to show and judge livestock and seed. Depicted also are fashion shows put on by female 4-H members. Finally, pictures of a hula-hoop competition dating from the 1950s are notable.

ENTERTAINMENT

Entertainment graphics date from the 1950s through the 1980s, and include ceremonies, rodeos, parades, and contests. Pictures of ceremonies depict the opening and closing ceremonies of the Winter Fair. Featured in these photos are winners of horse events, pipe and drum bands, and dignitaries giving speeches.

Rodeo pictures date only from the 1970s. Featured are men riding bucking broncos and cattle round-ups.

Parade photos, which date throughout the twentieth century, depict floats, six-horse teams pulling wagons, people riding horses, club entries—such as the Lions' Club and the Neat and Nifty Sewing Club, and marching bands.

Contest pictures include fiddling competitions and dog shows. The Winter Fair Board sponsored fiddling contests sporadically, and photos of such contests date from the 1950s through the 1970s. Dog show pictures also appear intermittently in the records, such as the Mutt Show photos of the 1950s.

DIGNITARIES

Photos of dignitaries, which date throughout the twentieth century, are mostly of men. Depicted both individually and severally are members of Winter Fair Boards, municipal and provincial politicians, and local professional and business representatives. In these pictures they are usually giving speeches, signing documents, and holding meetings. Notable are the pictures of members of associations that held meetings at the winter fairs, including the Cattle Breeders Association (1960s).

The graphic materials of RG2SF2 are useful for many purposes. For one, they offer a rich visual history of the Winter Fair. From these pictures, one can ascertain the ways in which the fair has changed and expanded throughout the twentieth century. By viewing the photos of newly built buildings, for instance, one can determine that the fair expanded in size over the years.

Also valuable is the history of western Canadian agriculture that is contained in these pictures. Over the years, the types of exhibits changed at the winter fair, thus indicating the changing nature of farming. Photos of cattle, for example, reflect the changes in types of breeds raised in the west. Exotics like Simmental only appear after the late 1960s, thus indicating that this breed began to flourish in western Canada only in the second half of the twentieth century.

The number of people contained in these pictures is formidable, and the pictures of people are valuable in many ways. By studying the pictures of dignitaries associated with the fair, one can determine who the leading agricultural personalities were over the twentieth century in Brandon. As well, the photos of exhibitors offer a wide cross section of the rural residents of southwestern Manitoba and southeastern Saskatchewan. From the pictures of exhibitors, one can establish who were the farmers and ranchers of this region, where they lived, and in what field they specialized.

The photographs of the Winter Fair, then, are valuable for many researchers. Not only do they offer a rich history of the fair, but they also offer a vivid history of the people and agriculture of southeastern Saskatchewan and southwestern Manitoba.

Notes:	Item-level descriptions of the graphics of RG2SF1 through RG2SF4 are located on a searchable database. This database is entitled "Brandon Photographs" and can be read using Microsoft Access. "Brandon Photographs" is located on a 3½ floppy disk entitled "Provincial Exhibition Association of Manitoba fonds Series 9" included in this finding aid. The description of each photograph on this database includes the following information: accession number, title, date, place, physical description, scope and content, notes, creator, and copyright. By searching the database, individual photographs can be located easily. Detailed instructions on how to use the database are located in the printed finding aid.
Storage Location:	RG 2 Provincial Exhibition of Manitoba Association fonds RG2SF2 Manitoba Winter Fair
Related Material:	Pictures of the Winter Fair may also be found on the National Archives of Canada website. The Western Canadian Pictorial Index in Winnipeg, Manitoba, houses additional graphic records of the Winter Fair.

Arrangement:

Graphics for RG2SF1 through RG2SF4 are located in boxes. Graphics larger than 24 x 35 cm are located in the image mapcase, which is located in the reading room. The graphics are filed chronologically by accession number. The arrangement is as follows:

Provincial Exhibition of Manitoba Association fonds; RG2SF1-RG2SF4; Series 9
Boxes 1 through 15, as follows:

Box 1 EX0001 to EX0125
Box 2 EX0157 to EX0263
Box 3 EX0265 to EX0399
Box 4 EX0400 to EX0499
Box 5 EX0500 to EX0599
Box 6 EX0600 to EX0699
Box 7 EX0700 to EX0799
Box 8 EX0800 to EX0899
Box 9 EX0900 to EX0921
Box 10 EX1000 to EX1099
Box 11 EX1100 to EX1199
Box 12 EX1200 to EX1299
Box 13 EX1300 to EX1399
Box 14 EX1400 to EX1499
Box 15 EX1549 to EX1859



British American dealers (Arena Service, Brandon)

<http://archives.brandonu.ca/en/permalink/descriptions11201>

Part Of: CKX fonds
Creator: CKX
Description Level: Item
Item Number: 11-2010.B2n
Accession Number: 11-2010
GMD: graphic
Date Range: after 1954
Physical Description: 2.25" x 2.25" (b/w)
Material Details: Negative

Custodial History:

See fonds level of the CKX records for custodial history.

Scope and Content:

Image consists of British American dealers (Arena Service, Brandon).

Name Access: CKX
British American Dealers
Brandon, Manitoba
Subject Access: automobile dealerships
Storage Location: CKX fonds - 2010 accessions

Images





British American dealers (Highways 1 and 10, Brandon)

<http://archives.brandonu.ca/en/permalink/descriptions11202>

Part Of: CKX fonds
Creator: CKX
Description Level: Item
Item Number: 11-2010.B2o
Accession Number: 11-2010
GMD: graphic
Date Range: after 1954
Physical Description: 2.25" x 2.25" (b/w)
Material Details: Negative

Custodial History:

See fonds level of the CKX records for custodial history.

Scope and Content:

Image consists of British American dealers (Highways 1 and 10, Brandon).

Name Access: CKX
British American Dealers
Brandon, Manitoba
Subject Access: automobile dealerships
Storage Location: CKX fonds - 2010 accessions

Images



British American dealers (Prince Edward Service, Brandon)

<http://archives.brandonu.ca/en/permalink/descriptions11203>

Part Of: CKX fonds
Creator: CKX
Description Level: Item
Item Number: 11-2010.B2p(1) and (2)
Accession Number: 11-2010



GMD: graphic
 Date Range: after 1954
 Physical Description: 2 negatives - each 2.25" x 2.25" (b/w)
 Material Details: Negative
 Custodial History:

See fonds level of the CKX records for custodial history.

Scope and Content:

Image consists of British American dealers (Prince Edward Service, Brandon).

Name Access: CKX
 British American Dealers
 Prince Edward Service
 Brandon, Manitoba

Subject Access: automobile dealerships
 Storage Location: CKX fonds - 2010 accessions

Images





British American dealers - Pacific Service, Brandon

<http://archives.brandonu.ca/en/permalink/descriptions11206>

Part Of: CKX fonds
Creator: CKX
Description Level: Item
Item Number: 11-2010.B2s
Accession Number: 11-2010
GMD: graphic
Date Range: after 1954
Physical Description: 5" x 4" (b/w)
Material Details: Negative
Custodial History:

See fonds level of the CKX records for custodial history.

Scope and Content:

Image consists of British American dealers - Pacific Service, Brandon.

Name Access: CKX
British American Dealers
Pacific Service
Brandon, Manitoba
Subject Access: automobile dealerships
Storage Location: CKX fonds - 2010 accessions

Images





British American dealers - station near Barney's Drive Inn, Brandon

<http://archives.brandonu.ca/en/permalink/descriptions11207>

Part Of: CKX fonds
Creator: CKX
Description Level: Item
Item Number: 11-2010.B2t
Accession Number: 11-2010
GMD: graphic
Date Range: after 1954
Physical Description: 5" x 4" (b/w)
Material Details: Negative
Custodial History:

See fonds level of the CKX records for custodial history.

Scope and Content:

Image consists of British American dealers - station near Barney's Drive Inn, Brandon.

Name Access: CKX
British American Dealers
Barney's Drive Inn
Brandon, Manitoba
Subject Access: automobile dealerships
Storage Location: CKX fonds - 2010 accessions

Images





British American dealers - station near Barney's Drive Inn, Brandon

<http://archives.brandonu.ca/en/permalink/descriptions11208>

Part Of: CKX fonds
Creator: CKX
Description Level: Item
Item Number: 11-2010.B2u
Accession Number: 11-2010
GMD: graphic
Date Range: after 1954
Physical Description: 5" x 4" (b/w)
Material Details: Negative
Custodial History:

See fonds level of the CKX records for custodial history.

Scope and Content:

Image consists of British American dealers - station near Barney's Drive Inn, Brandon.

Name Access: CKX
British American Dealers
Barney's Drive Inn
Brandon, Manitoba
Subject Access: automobile dealerships
Storage Location: CKX fonds - 2010 accessions

Images





British American dealers - Lee Phipps dealer, Brandon

<http://archives.brandonu.ca/en/permalink/descriptions11209>

Part Of: CKX fonds
Creator: CKX
Description Level: Item
Item Number: 11-2010.B2v
Accession Number: 11-2010
GMD: graphic
Date Range: after 1954
Physical Description: 5" x 4" (b/w)
Material Details: Negative

Custodial History:

See fonds level of the CKX records for custodial history.

Scope and Content:

Image consists of British American dealers - Lee Phipps dealer, Brandon.

Name Access: CKX
British American Dealers
Lee Phipps
Brandon, Manitoba
Subject Access: automobile dealerships
Storage Location: CKX fonds - 2010 accessions

Images





British American dealers - Lee Phipps dealer, Brandon

<http://archives.brandonu.ca/en/permalink/descriptions11210>

Part Of: CKX fonds
Creator: CKX
Description Level: Item
Item Number: 11-2010.B2w
Accession Number: 11-2010
GMD: graphic
Date Range: after 1954
Physical Description: 5" x 4" (b/w)
Material Details: Negative

Custodial History:

See fonds level of the CKX records for custodial history.

Scope and Content:

Image consists of British American dealers - Lee Phipps dealer, Brandon.

Name Access: CKX
British American Dealers
Lee Phipps
Brandon, Manitoba
Subject Access: automobile dealerships
Storage Location: CKX fonds - 2010 accessions

Images





British American dealers (Brandon)

<http://archives.brandonu.ca/en/permalink/descriptions11226>

Part Of: CKX fonds
Creator: CKX
Description Level: Item
Item Number: 11-2010.B3k
Accession Number: 11-2010
GMD: graphic
Date Range: after 1954
Physical Description: 2.25" x 2.25" (b/w)
Material Details: Negative
Custodial History:

See fonds level of the CKX records for custodial history.

Scope and Content:

Image consists of the British American dealer located at 18th Street and College Avenue in Brandon.

Name Access: CKX
British American Dealers
Brandon, Manitoba
Subject Access: automobile dealerships
Storage Location: CKX fonds - 2010 accessions

Images





British American dealers - Arena Service (Brandon)

<http://archives.brandonu.ca/en/permalink/descriptions11227>

Part Of: CKX fonds
Creator: CKX
Description Level: Item
Item Number: 11-2010.B3l(1)
Accession Number: 11-2010
GMD: graphic
Date Range: after 1954
Physical Description: 2.25" x 2.25" (b/w)
Material Details: Negative
Custodial History:

See fonds level of the CKX records for custodial history.

Scope and Content:

Image consists of British American dealer - Arena Service in Brandon.

Name Access: CKX
British American Dealers
Brandon, Manitoba
Arena Service
Subject Access: automobile dealerships
Storage Location: CKX fonds - 2010 accessions

Images





British American dealers - Arena Service (Brandon)

<http://archives.brandonu.ca/en/permalink/descriptions11228>

Part Of: CKX fonds
Creator: CKX
Description Level: Item
Item Number: 11-2010.B3l(2)
Accession Number: 11-2010
GMD: graphic
Date Range: after 1954
Physical Description: 2.25" x 2.25" (b/w)
Material Details: Negative

Custodial History:

See fonds level of the CKX records for custodial history.

Scope and Content:

Image consists of British American dealer - Arena Service in Brandon.

Name Access: CKX
British American Dealers
Brandon, Manitoba
Arena Service

Subject Access: automobile dealerships

Storage Location: CKX fonds - 2010 accessions

Images



British American dealers - Fredrickson's (Brandon)

<http://archives.brandonu.ca/en/permalink/descriptions11229>

Part Of: CKX fonds
Creator: CKX
Description Level: Item
Item Number: 11-2010.B3m(1) and (2)
Accession Number: 11-2010



GMD: graphic
Date Range: after 1954
Physical Description: 2 negatives - each 2.25" x 2.25" (b/w)
Material Details: Negative
Custodial History:

See fonds level of the CKX records for custodial history.

Scope and Content:

Image consists of British American dealer - Fredrickson Motors in Brandon.

Name Access: CKX
British American Dealers
Brandon, Manitoba
Fredrickson Motors

Subject Access: automobile dealerships
Storage Location: CKX fonds - 2010 accessions

Images





British American dealers - Prince Edward Service (Brandon)

<http://archives.brandonu.ca/en/permalink/descriptions11232>

Part Of: CKX fonds
Creator: CKX
Description Level: Item
Item Number: 11-2010.B3o(1)
Accession Number: 11-2010
GMD: graphic
Date Range: after 1954
Physical Description: 5" x 4" (b/w)
Material Details: Negative
Custodial History:

See fonds level of the CKX records for custodial history.

Scope and Content:

Image consists of the British American dealer - Prince Edward Service in Brandon.

Name Access: CKX
British American Dealers
Prince Edward Service
Brandon, Manitoba
Subject Access: automobile dealerships
Storage Location: CKX fonds - 2010 accessions

Images





British American dealers - Prince Edward Service (Brandon)

<http://archives.brandonu.ca/en/permalink/descriptions11233>

Part Of: CKX fonds
Creator: CKX
Description Level: Item
Item Number: 11-2010.B3o(2)
Accession Number: 11-2010
GMD: graphic
Date Range: after 1954
Physical Description: 5" x 4" (b/w)
Material Details: Negative
Custodial History:

See fonds level of the CKX records for custodial history.

Scope and Content:

Image consists of British American dealer - Prince Edward Service in Brandon.

Name Access: CKX
British American Dealers
Prince Edward Service
Brandon, Manitoba
Subject Access: automobile dealerships
Storage Location: CKX fonds - 2010 accessions

Images





British American dealers (Brandon)

<http://archives.brandonu.ca/en/permalink/descriptions11235>

Part Of: CKX fonds
Creator: CKX
Description Level: Item
Item Number: 11-2010.B3q(1)
Accession Number: 11-2010
GMD: graphic
Date Range: after 1954
Physical Description: 5" x 4" (b/w)
Material Details: Negative
Custodial History:

See fonds level of the CKX records for custodial history.

Scope and Content:

Image consists of the British American dealer at 1st Street and Pacific Avenue in Brandon.

Name Access: CKX
British American Dealers
Brandon, Manitoba
Subject Access: automobile dealerships
Storage Location: CKX fonds - 2010 accessions

Images





British American dealers (Brandon)

<http://archives.brandonu.ca/en/permalink/descriptions11236>

Part Of: CKX fonds
Creator: CKX
Description Level: Item
Item Number: 11-2010.B3q(2)
Accession Number: 11-2010
GMD: graphic
Date Range: after 1954
Physical Description: 5" x 4" (b/w)
Material Details: Negative
Custodial History:

See fonds level of the CKX records for custodial history.

Scope and Content:

Image consists of the British American dealer at 1st Street and Pacific Avenue in Brandon.

Name Access: CKX
British American Dealers
Brandon, Manitoba
Subject Access: automobile dealerships
Storage Location: CKX fonds - 2010 accessions

Images

