

# S. J. McKee Archives



## Casselman survey - summary information

<http://archives.brandonu.ca/en/permalink/descriptions11724>

|                    |  |
|--------------------|--|
| Part Of:           | RG 7 Beverley Nicholson fonds  |
| Description Level: | Sub sub series   |
| Series Number:     | 1.1.1  |
| GMD:               | multiple media   |
| Date Range:        | 2003   |
| Material Details:  | Field journals have been scanned in multi-page PDF files. Artifact catalogues are PDF files in spreadsheet format. Photographs are in jpeg format. |

### History /

#### Biographical:

Archaeological testing began in the Crepeelee locale in May 2003 with a field crew of four members. James Graham supervised the crew and was assisted by Sarah Graham, Jollana Bishop, and Lisa Sonnenburg. Later additions to the testing team were Todd Kristensen, Michael Evans, and Emily Ansell.

The methodology for this survey used an arbitrary datum and a transit to establish a grid of 30 m intervals and a shovel test every 20 m. Materials were removed and screened to a minimum depth of 50 cm below surface. All recovered materials were bagged and removed to the lab for further analysis. All information including: test pit grid co-ordinates; UTM co-ordinates for each test pit; artifact presence; excavator; vegetation; aspect; paleosol; paleosol depth; and notes, were entered into a GIS database.

Approximately 600 shovel test pits were excavated and recorded in this fashion. Of the 600 shovel test pits, over 300 contained cultural materials. Based on the results of the Casselman survey several areas were designed for further testing and excavation. Crepeelee West and Crepeelee East were renamed the Sarah site DiMe-28) and Crepeelee 3 which became the Crepeelee site DiMe- 29.

#### Scope and Content:

Sub-sub-sub series contains: Summary information of field methodology, number and co-ordinates of excavations, personnel and their staff position; Field journals are daily records of recoveries, features and activities at the site; Site records include excavation level and unit summaries, feature sheets, profiles; sample records and maps; Artifact catalogues are lists and identifications of all artifacts recovered; Photographs are of excavation units, features, the landscape and personnel.

|                 |   |
|-----------------|---|
| Name Access:    | Casselman survey - summary information  |
| Subject Access: | Archaeology<br>Crepeelee locale<br>Casselman survey<br>Casselman survey - summary information |



## Crepeelee site 2004

<http://archives.brandonu.ca/en/permalink/descriptions11725>

Part Of: RG 7 Beverley Nicholson fonds  
Description Level: Sub sub series  
Series Number: 1.2.2  
Accession Number: 1-2010  
GMD: multiple media  
Date Range: 2004  
Material Details: Field journals have been scanned in multi-page PDF files. Artifact catalogues are PDF files in spreadsheet format. Photographs are in jpeg format.

### History /

#### Biographical:

The Crepeelee site was identified from the results of the Casselman survey and excavated in 2003. In 2004 the site was funded through the SCAPE project, directed by Bev Nicholson. The units were excavated by Crew Chief Tomasin Playford and crew.

Eight units were excavated in 2004, XU 1 to XU 8

The artifacts recovered from these eight excavations are faunal (animal bone), mainly bison, lithic materials (stone tools and flakes) and some ceramic (pottery). The artifact catalogue has 1258 records.

#### Scope and Content:

Sub-sub-sub series contains: Summary information of field methodology, number and co-ordinates of excavations, personnel and their staff position; Field journals are daily records of recoveries, features and activities at the site; Site records include excavation level and unit summaries, feature sheets, profiles; sample records and maps; Artifact catalogues are lists and identifications of all artifacts recovered; Photographs are of excavation units, features, the landscape and personnel.

Name Access: Crepeelee site 2004  
Subject Access: Archaeology  
Crepeelee locale  
Crepeelee site DiMe-29  
Crepeelee site 2004



## Crepeelee site 2005

<http://archives.brandonu.ca/en/permalink/descriptions11748>

Part Of: RG 7 Beverley Nicholson fonds  
Description Level: Sub sub series  
Series Number: 1.2.3  
Accession Number: 1-2010  
GMD: multiple media  
Date Range: 2005  
Material Details: Field journals have been scanned in multi-page PDF files. Artifact catalogues are PDF files in spreadsheet format. Photographs are in jpeg format.

### History /

#### Biographical:

The Crepeelee site was identified from the results of the Casselman survey and excavated in 2003 and 2004.

In 2005 the Brandon University Field School was held at both the Crepeelee and Graham sites in the Crepeelee locale. Denise Ens instructed the school and James Graham was teaching assistant.

At the Crepeelee site nine units were excavated (XU10-16 & 20, 21). Units 20 & 21 were referred to as Meadow in the notes but is considered part of the larger site based on recoveries. There are over 1,570 records in the catalogue. Faunal (animal bone), lithics, fire cracked rock, diagnostic lithics and ceramics were recovered from the site

The weather conditions during the field school were particularly difficult due to the rainfall and flooding of the roads and sites.

#### Scope and Content:

Sub-sub-sub series contains: Summary information of field methodology, number and co-ordinates of excavations, personnel and their staff position; Field journals are daily records of recoveries, features and activities at the site; Site records include excavation level and unit summaries, feature sheets, profiles; sample records and maps; Artifact catalogues are lists and identifications of all artifacts recovered; Photographs are of excavation units, features, the landscape and personnel.

Name Access: Crepeelee site 2005  
Subject Access: Archaeology  
Crepeelee locale  
Crepeelee site DiMe-29  
Crepeelee site 2005



## Crepeelee site 2007

<http://archives.brandonu.ca/en/permalink/descriptions11772>

Part Of: RG 7 Beverley Nicholson fonds  
Description Level: Sub sub series  
Series Number: 1.2.4  
Accession Number: 1-2010  
GMD: multiple media  
Date Range: 2007  
Material Details: Field journals have been scanned in multi-page PDF files. Artifact catalogues are PDF files in spreadsheet format. Photographs are in jpeg format.

### History /

#### Biographical:

The Crepeelee site was identified from the results of the Casselman survey and excavated in 2003, 2004 and 2005.

In 2007 the Brandon University Archaeology Field School was held at the Crepeelee site in the Crepeelee locale. Denise Ens instructed the school with Kate Decter & Jessica MacKenzie assistants.

Seventeen units were excavated XU30 - 46. Faunal (animal bone), lithics, fire cracked rock, diagnostic lithics and ceramics were recovered from the site. There are over 3050 records in the catalogue.

#### Scope and Content:

Sub-sub-sub series contains: Summary information of field methodology, number and co-ordinates of excavations, personnel and their staff position; Field journals are daily records of recoveries, features and activities at the site; Site records include excavation level and unit summaries, feature sheets, profiles; sample records and maps; Artifact catalogues are lists and identifications of all artifacts recovered; Photographs are of excavation units, features, the landscape and personnel.

Name Access: Crepeelee site 2007  
Subject Access: Archaeology  
Crepeelee locale  
Crepeelee site DiMe-29  
Crepeelee site 2007



## Graham site 2006

<http://archives.brandonu.ca/en/permalink/descriptions11922>

Part Of: RG 7 Beverley Nicholson fonds  
Description Level: Sub sub series  
Series Number: 1.4.3  
Accession Number: 1-2010  
GMD: multiple media  
Date Range: 2006  
Material Details: Field journals have been scanned in multi-page PDF files. Artifact catalogues are PDF files in spreadsheet format. Photographs are in jpeg format.

### History /

#### Biographical:

The Graham site is located south of the Crepeele site. Due to the close proximity the Graham and Crepeele sites have both been the site of the Brandon University Archaeological Field School.

In 2006 a small Brandon University Archaeology Field School was conducted at the Graham site. Four excavations (XU 7, 8 15 & 16) were completed with Denise Ens Instructor and Jessica MacKenzie Teaching Assistant.

Recoveries included faunal (mostly bison), lithics and ceramics

The Graham site was initially designated as a separate site early in the testing of the Crepeele locale due to what appeared to be a distinction between Early and Late Woodland ceramics. Subsequent testing has shown that this distinction was premature and that the cultural mosaic represented in the western section of the Crepeele locale does not readily separate in this manner.

#### Scope and Content:

Sub-sub-sub series contains: Summary information of field methodology, number and co-ordinates of excavations, personnel and their staff position; Field journals are daily records of recoveries, features and activities at the site; Site records include excavation level and unit summaries, feature sheets, profiles; sample records and maps; Artifact catalogues are lists and identifications of all artifacts recovered; Photographs are of excavation units, features, the landscape and personnel.

Name Access: Graham site 2006  
Subject Access: Archaeology  
Crepeele locale  
Graham site DiMe-30  
Graham site 2006



## Graham site 2008

<http://archives.brandonu.ca/en/permalink/descriptions11957>

Part Of: RG 7 Beverley Nicholson fonds  
Description Level: Sub sub series  
Series Number: 1.4.4  
Accession Number: 1-2010  
GMD: multiple media  
Date Range: 2008  
Material Details: Field journals have been scanned in multi-page PDF files. Artifact catalogues are PDF files in spreadsheet format. Photographs are in jpeg format.

### History /

#### Biographical:

In 2008 Brandon University Archaeology returned to the Crepeele locale to conduct further testing at the Graham and Crepeele sites. Four units (XU 47-49 & 53) were excavated at Graham 2008 in order to collect samples and add further data to previous excavations. The usual excavation methodology was employed.

The small crew was directed by Bev Nicholson with Crew of Bill Foy, Andrew Lints & Kim Harrison

Recoveries included faunal (mostly bison), lithics and ceramics.

#### Scope and Content:

Sub-sub-sub series contains: Summary information of field methodology, number and co-ordinates of excavations, personnel and their staff position; Field journals are daily records of recoveries, features and activities at the site; Site records include excavation level and unit summaries, feature sheets, profiles; sample records and maps; Artifact catalogues are lists and identifications of all artifacts recovered; Photographs are of excavation units, features, the landscape and personnel.

Name Access: Graham site 2008  
Subject Access: Archaeology  
Crepeele locale  
Graham site DiMe-30  
Graham site 2008



## Graham site 2004

<http://archives.brandonu.ca/en/permalink/descriptions11967>

Part Of: RG 7 Beverley Nicholson fonds  
Description Level: Sub sub series  
Series Number: 1.4.1  
Accession Number: 1-2010  
GMD: multiple media  
Date Range: 2004  
Material Details: Field journals have been scanned in multi-page PDF files. Artifact catalogues are PDF files in spreadsheet format. Photographs are in jpeg format.

### History /

#### Biographical:

Graham units 9 and 14 were excavated with the Crepeele site in 2004 and were reassigned to the Graham site DiMe-30 keeping the same unit numbers. Tomasin Playford was crew chief in 2004.

The Graham site was initially designated as a separate site early in the testing of the Crepeele locale due to what appeared to be a distinction between Early and Late Woodland ceramics. Subsequent testing has shown that this distinction was premature and that the cultural mosaic represented in the western section of the Crepeele locale does not readily separate in this manner.

#### Scope and Content:

Sub-sub-sub series contains: Summary information of field methodology, number and co-ordinates of excavations, personnel and their staff position; Field journals are daily records of recoveries, features and activities at the site; Site records include excavation level and unit summaries, feature sheets, profiles; sample records and maps; Artifact catalogues are lists and identifications of all artifacts recovered; Photographs are of excavation units, features, the landscape and personnel.

Name Access: Graham site 2004  
Subject Access: Archaeology  
Crepeele locale  
Graham site DiMe-30  
Graham site 2004



## Crepeele locale Radiocarbon Report I

<http://archives.brandonu.ca/en/permalink/descriptions11968>

Part Of: RG 7 Beverley Nicholson fonds  
Description Level: Sub sub series  
Series Number: 1.5.1  
Accession Number: 1-2010  
GMD: multiple media  
Date Range: 2003-2008  
Physical Description: 3 pages  
Material Details: Radiocarbon date reports have been scanned in multi-page PDF files.

Biographical:

Crepeele locale Radiocarbon Dates. C14 report by IsoTrace Laboratory for Crepeele site 2005 XU 8.

From 2003 to 2008 field work took place at the Crepeele locale with 75 - 1m x1m units excavated.

To help establish the cultural sequence at the locale Radiocarbon dates were obtained from the three sites in the Crepeele locale.

## Radiocarbon dating

The technique of radiocarbon dating was developed by Willard Libby and his colleagues at the University of Chicago in 1949.

Radiocarbon dating is used to estimate the age of organic remains from archaeological sites. Organic matter has a radioactive form of carbon (C14) that begins to decay upon death. C14 decays at a steady, known rate of a half life of 5,730 years. The technique is useful for material up to 50,000 years. Fluctuations of C14 in the atmosphere can affect results so dates are calibrated against dendrochronology. Radiocarbon dates are calibrated to calendar years.

Dates are reported in radiocarbon years or Before Present. Before Present refers to dates before 1950. The introduction of massive amounts of C14, due to atomic bomb and surface testing of atomic weapons, has widely increased the standard deviation on all dates after A.D. 1700 causing these dates to be unreliable.

Accelerated mass spectrometry can more accurately measure C14 with smaller samples and can date materials to 80,000 years.

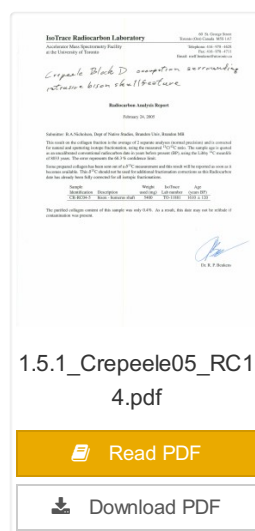
### Scope and Content:

Sub sub series contains radiocarbon dates from: Crepeele, Sarah and Graham sites.

Name Access: Crepeele locale Radiocarbon Report I

Subject Access: Archaeology  
Crepeele locale  
Crepeele locale Radiocarbon Dates

## Documents







## Crepelee locale Radiocarbon Report II

<http://archives.brandonu.ca/en/permalink/descriptions11969>

Part Of: RG 7 Beverley Nicholson fonds  
Description Level: Sub sub series  
Series Number: 1.5.2  
Accession Number: 1-2010  
GMD: multiple media  
Date Range: 2003-2008  
Physical Description: 8 pages  
Material Details: Radiocarbon date reports have been scanned in multi-page PDF files.

### History /

### Biographical:

Crepelee locale Radiocarbon Dates. C14 report by Beta Analytic Inc. for Crepelee site XU 48 and Graham site XU 54.

From 2003 to 2008 field work took place at the Crepelee locale with 75 - 1m x1m units excavated.

To help establish the cultural sequence at the locale Radiocarbon dates were obtained from the three sites in the Crepelee locale.

### Radiocarbon dating

The technique of radiocarbon dating was developed by Willard Libby and his colleagues at the University of Chicago in 1949.

Radiocarbon dating is used to estimate the age of organic remains from archaeological sites. Organic matter has a radioactive form of carbon (C14) that begins to decay upon death. C14 decays at a steady, known rate of a half life of 5,730 years. The technique is useful for material up to 50,000 years. Fluctuations of C14 in the atmosphere can affect results so dates are calibrated against dendrochronology. Radiocarbon dates are calibrated to calendar years.

Dates are reported in radiocarbon years or Before Present. Before Present refers to dates before 1950. The introduction of massive amounts of C14, due to atomic bomb and surface testing of atomic weapons, has widely increased the standard deviation on all dates after A.D. 1700 causing these dates to be unreliable.

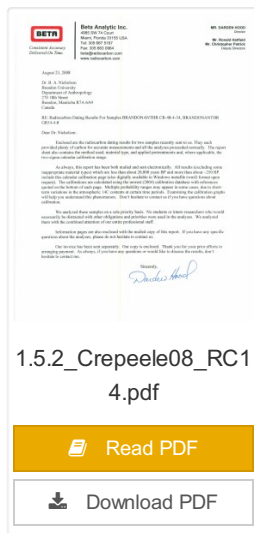
Accelerated mass spectrometry can more accurately measure C14 with smaller samples and can date materials to 80,000 years.

### Scope and Content:

Sub sub series contains radiocarbon dates from: Crepelee, Sarah and Graham sites.

Name Access: Crepelee locale Radiocarbon Report II  
Subject Access: Archaeology  
Crepelee locale  
Crepelee locale Radiocarbon Dates

### Documents



# BETA ANALYTIC INC.

14500 N.W. 14th Ave., Suite 100  
Fort Lauderdale, FL 33304

Phone: (954) 345-1500  
Fax: (954) 345-1501  
E-mail: [info@beta-analytic.com](mailto:info@beta-analytic.com)  
Web: [www.beta-analytic.com](http://www.beta-analytic.com)

## REPORT OF RADIOCARBON DATING ANALYSES

Material: 157008

Material Source: 157008

Sample Name

Material

Age

Conventional Radiocarbon Age (yr BP)

157008-1

157008-1

157008-1

157008-1

157008-2

157008-2

157008-2

157008-2

157008-3

157008-3

157008-3

157008-3

157008-4

157008-4

157008-4

157008-4

157008-5

157008-5

157008-5

157008-5

157008-6

157008-6

157008-6

157008-6

157008-7

157008-7

157008-7

157008-7

157008-8

157008-8

157008-8

157008-8

157008-9

157008-9

157008-9

157008-9

157008-10

157008-10

157008-10

157008-10

157008-11

157008-11

157008-11

157008-11

157008-12

157008-12

157008-12

157008-12

157008-13

157008-13

157008-13

157008-13

157008-14

157008-14

157008-14

157008-14

157008-15

157008-15

157008-15

157008-15

157008-16

157008-16

157008-16

157008-16

157008-17

157008-17

157008-17

157008-17

157008-18

157008-18

157008-18

157008-18

157008-19

157008-19

157008-19

157008-19

157008-20

157008-20

157008-20

157008-20

157008-21

157008-21

157008-21

157008-21

157008-22

157008-22

157008-22

157008-22

157008-23

157008-23

157008-23

157008-23

157008-24

157008-24

157008-24

157008-24

157008-25

157008-25

157008-25

157008-25

157008-26

157008-26

157008-26

157008-26

157008-27

157008-27

157008-27

157008-27

157008-28

157008-28

157008-28

157008-28

157008-29

157008-29

157008-29

157008-29

157008-30

157008-30

157008-30

157008-30

157008-31

157008-31

157008-31

157008-31

157008-32

157008-32

157008-32

157008-32

157008-33

157008-33

157008-33

157008-33

157008-34

157008-34

157008-34

157008-34

157008-35

157008-35

157008-35

157008-35

157008-36

157008-36

157008-36

157008-36

157008-37

157008-37

157008-37

157008-37

157008-38

157008-38

157008-38

157008-38

## Crepeele locale Radiocarbon Report III

<http://archives.brandonu.ca/en/permalink/descriptions11970>

Part Of: RG 7 Beverley Nicholson fonds

Description Level: Sub sub series

Series Number: 1.5.3

Accession Number: 1-2010

GMD: multiple media

Date Range: 2003-2008

Physical Description: 9 pages

Material Details: Radiocarbon date reports have been scanned in multi-page PDF files.

## History /

### Biographical:

Crepeele locale Radiocarbon Dates. C14 report by Beta Analytic Inc. for Crepeele site XUs 8, 30, 50.

From 2003 to 2008 field work took place at the Crepeele locale with 75 - 1m x1m units excavated.

To help establish the cultural sequence at the locale Radiocarbon dates were obtained from the three sites in the Crepeele locale.

### Radiocarbon dating

The technique of radiocarbon dating was developed by Willard Libby and his colleagues at the University of Chicago in 1949.

Radiocarbon dating is used to estimate the age of organic remains from archaeological sites. Organic matter has a radioactive form of carbon (C14) that begins to decay upon death. C14 decays at a steady, known rate of a half life of 5,730 years. The technique is useful for material up to 50,000 years. Fluctuations of C14 in the atmosphere can affect results so dates are calibrated against dendrochronology. Radiocarbon dates are calibrated to calendar years.

Dates are reported in radiocarbon years or Before Present. Before Present refers to dates before 1950. The introduction of massive amounts of C14, due to atomic bomb and surface testing of atomic weapons, has widely increased the standard deviation on all dates after A.D. 1700 causing these dates to be unreliable.

Accelerated mass spectrometry can more accurately measure C14 with smaller samples and can date materials to 80,000 years.


### Scope and Content:

Sub sub series contains radiocarbon dates from: Crepeele, Sarah and Graham sites.

Name Access: Crepeele locale Radiocarbon Report III

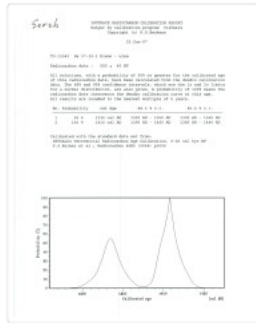
Subject Access: Archaeology  
Crepeele locale  
Crepeele locale Radiocarbon Dates

## Documents

**BETA ANALYTIC INC.**  
250 W. 146th St., Suite 100  
Bronx, NY 10453-4299  
Tel: 718-590-7777 Fax: 718-590-7778  
www.betainc.com

**REPORT OF RADIOCARBON DATING ANALYSES**  
Dr. R. A. Nicholson      Report No.: 10112008  
Boulder University      Material Received: 10/11/2008

| Sample ID | Material       | 13C (‰) | Conventional |
|-----------|----------------|---------|--------------|
|           | Batch/Location | Result  | 14C Age (BP) |
| See 10085 | 1011-10085     | -26.1‰  | 100 ± 40     |
| See 10086 | 1011-10086     | -26.1‰  | 100 ± 40     |
| See 10087 | 1011-10087     | -26.1‰  | 100 ± 40     |
| See 10088 | 1011-10088     | -26.1‰  | 100 ± 40     |
| See 10089 | 1011-10089     | -26.1‰  | 100 ± 40     |
| See 10090 | 1011-10090     | -26.1‰  | 100 ± 40     |
| See 10091 | 1011-10091     | -26.1‰  | 100 ± 40     |
| See 10092 | 1011-10092     | -26.1‰  | 100 ± 40     |
| See 10093 | 1011-10093     | -26.1‰  | 100 ± 40     |
| See 10094 | 1011-10094     | -26.1‰  | 100 ± 40     |
| See 10095 | 1011-10095     | -26.1‰  | 100 ± 40     |
| See 10096 | 1011-10096     | -26.1‰  | 100 ± 40     |
| See 10097 | 1011-10097     | -26.1‰  | 100 ± 40     |
| See 10098 | 1011-10098     | -26.1‰  | 100 ± 40     |
| See 10099 | 1011-10099     | -26.1‰  | 100 ± 40     |
| See 10100 | 1011-10100     | -26.1‰  | 100 ± 40     |
| See 10101 | 1011-10101     | -26.1‰  | 100 ± 40     |
| See 10102 | 1011-10102     | -26.1‰  | 100 ± 40     |
| See 10103 | 1011-10103     | -26.1‰  | 100 ± 40     |
| See 10104 | 1011-10104     | -26.1‰  | 100 ± 40     |
| See 10105 | 1011-10105     | -26.1‰  | 100 ± 40     |
| See 10106 | 1011-10106     | -26.1‰  | 100 ± 40     |
| See 10107 | 1011-10107     | -26.1‰  | 100 ± 40     |
| See 10108 | 1011-10108     | -26.1‰  | 100 ± 40     |
| See 10109 | 1011-10109     | -26.1‰  | 100 ± 40     |
| See 10110 | 1011-10110     | -26.1‰  | 100 ± 40     |
| See 10111 | 1011-10111     | -26.1‰  | 100 ± 40     |
| See 10112 | 1011-10112     | -26.1‰  | 100 ± 40     |
| See 10113 | 1011-10113     | -26.1‰  | 100 ± 40     |
| See 10114 | 1011-10114     | -26.1‰  | 100 ± 40     |
| See 10115 | 1011-10115     | -26.1‰  | 100 ± 40     |
| See 10116 | 1011-10116     | -26.1‰  | 100 ± 40     |
| See 10117 | 1011-10117     | -26.1‰  | 100 ± 40     |
| See 10118 | 1011-10118     | -26.1‰  | 100 ± 40     |
| See 10119 | 1011-10119     | -26.1‰  | 100 ± 40     |
| See 10120 | 1011-10120     | -26.1‰  | 100 ± 40     |
| See 10121 | 1011-10121     | -26.1‰  | 100 ± 40     |
| See 10122 | 1011-10122     | -26.1‰  | 100 ± 40     |
| See 10123 | 1011-10123     | -26.1‰  | 100 ± 40     |
| See 10124 | 1011-10124     | -26.1‰  | 100 ± 40     |
| See 10125 | 1011-10125     | -26.1‰  | 100 ± 40     |
| See 10126 | 1011-10126     | -26.1‰  | 100 ± 40     |
| See 10127 | 1011-10127     | -26.1‰  | 100 ± 40     |
| See 10128 | 1011-10128     | -26.1‰  | 100 ± 40     |
| See 10129 | 1011-10129     | -26.1‰  | 100 ± 40     |
| See 10130 | 1011-10130     | -26.1‰  | 100 ± 40     |
| See 10131 | 1011-10131     | -26.1‰  | 100 ± 40     |
| See 10132 | 1011-10132     | -26.1‰  | 100 ± 40     |
| See 10133 | 1011-10133     | -26.1‰  | 100 ± 40     |
| See 10134 | 1011-10134     | -26.1‰  | 100 ± 40     |
| See 10135 | 1011-10135     | -26.1‰  | 100 ± 40     |
| See 10136 | 1011-10136     | -26.1‰  | 100 ± 40     |
| See 10137 | 1011-10137     | -26.1‰  | 100 ± 40     |
| See 10138 | 1011-10138     | -26.1‰  | 100 ± 40     |
| See 10139 | 1011-10139     | -26.1‰  | 100 ± 40     |
| See 10140 | 1011-10140     | -26.1‰  | 100 ± 40     |
| See 10141 | 1011-10141     | -26.1‰  | 100 ± 40     |
| See 10142 | 1011-10142     | -26.1‰  | 100 ± 40     |
| See 10143 | 1011-10143     | -26.1‰  | 100 ± 40     |
| See 10144 | 1011-10144     | -26.1‰  | 100 ± 40     |
| See 10145 | 1011-10145     | -26.1‰  | 100 ± 40     |
| See 10146 | 1011-10146     | -26.1‰  | 100 ± 40     |
| See 10147 | 1011-10147     | -26.1‰  | 100 ± 40     |
| See 10148 | 1011-10148     | -26.1‰  | 100 ± 40     |
| See 10149 | 1011-10149     | -26.1‰  | 100 ± 40     |
| See 10150 | 1011-10150     | -26.1‰  | 100 ± 40     |
| See 10151 | 1011-10151     | -26.1‰  | 100 ± 40     |
| See 10152 | 1011-10152     | -26.1‰  | 100 ± 40     |
| See 10153 | 1011-10153     | -26.1‰  | 100 ± 40     |
| See 10154 | 1011-10154     | -26.1‰  | 100 ± 40     |
| See 10155 | 1011-10155     | -26.1‰  | 100 ± 40     |
| See 10156 | 1011-10156     | -26.1‰  | 100 ± 40     |
| See 10157 | 1011-10157     | -26.1‰  | 100 ± 40     |
| See 10158 | 1011-10158     | -26.1‰  | 100 ± 40     |
| See 10159 | 1011-10159     | -26.1‰  | 100 ± 40     |
| See 10160 | 1011-10160     | -26.1‰  | 100 ± 40     |
| See 10161 | 1011-10161     | -26.1‰  | 100 ± 40     |
| See 10162 | 1011-10162     | -26.1‰  | 100 ± 40     |
| See 10163 | 1011-10163     | -26.1‰  | 100 ± 40     |
| See 10164 | 1011-10164     | -26.1‰  | 100 ± 40     |
| See 10165 | 1011-10165     | -26.1‰  | 100 ± 40     |
| See 10166 | 1011-10166     | -26.1‰  | 100 ± 40     |
| See 10167 | 1011-10167     | -26.1‰  | 100 ± 40     |
| See 10168 | 1011-10168     | -26.1‰  | 100 ± 40     |
| See 10169 | 1011-10169     | -26.1‰  | 100 ± 40     |
| See 10170 | 1011-10170     | -26.1‰  | 100 ± 40     |
| See 10171 | 1011-10171     | -26.1‰  | 100 ± 40     |
| See 10172 | 1011-10172     | -26.1‰  | 100 ± 40     |
| See 10173 | 1011-10173     | -26.1‰  | 100 ± 40     |
| See 10174 | 1011-10174     | -26.1‰  | 100 ± 40     |
| See 10175 | 1011-10175     | -26.1‰  | 100 ± 40     |
| See 10176 | 1011-10176     | -26.1‰  | 100 ± 40     |
| See 10177 | 1011-10177     | -26.1‰  | 100 ± 40     |
| See 10178 | 1011-10178     | -26.1‰  | 100 ± 40     |
| See 10179 | 1011-10179     | -26.1‰  | 100 ± 40     |
| See 10180 | 1011-10180     | -26.1‰  | 100 ± 40     |
| See 10181 | 1011-10181     | -26.1‰  | 100 ± 40     |
| See 10182 | 1011-10182     | -26.1‰  | 100 ± 40     |
| See 10183 | 1011-10183     | -26.1‰  | 100 ± 40     |
| See 10184 | 1011-10184     | -26.1‰  | 100 ± 40     |
| See 10185 | 1011-10185     | -26.1‰  | 100 ± 40     |
| See 10186 | 1011-10186     | -26.1‰  | 100 ± 40     |
| See 10187 | 1011-10187     | -26.1‰  | 100 ± 40     |
| See 10188 | 1011-10188     | -26.1‰  | 100 ± 40     |
| See 10189 | 1011-10189     | -26.1‰  | 100 ± 40     |
| See 10190 | 1011-10190     | -26.1‰  | 100 ± 40     |
| See 10191 | 1011-10191     | -26.1‰  | 100 ± 40     |
| See 10192 | 1011-10192     | -26.1‰  | 100 ± 40     |
| See 10193 | 1011-10193     | -26.1‰  | 100 ± 40     |
| See 10194 | 1011-10194     | -26.1‰  | 100 ± 40     |
| See 10195 | 1011-10195     | -26.1‰  | 100 ± 40     |
| See 10196 | 1011-10196     | -26.1‰  | 100 ± 40     |
| See 10197 | 1011-10197     | -26.1‰  | 100 ± 40     |
| See 10198 | 1011-10198     | -26.1‰  | 100 ± 40     |
| See 10199 | 1011-10199     | -26.1‰  | 100 ± 40     |
| See 10200 | 1011-10200     | -26.1‰  | 100 ± 40     |
| See 10201 | 1011-10201     | -26.1‰  | 100 ± 40     |
| See 10202 | 1011-10202     | -26.1‰  | 100 ± 40     |
| See 10203 | 1011-10203     | -26.1‰  | 100 ± 40     |
| See 10204 | 1011-10204     | -26.1‰  | 100 ± 40     |
| See 10205 | 1011-10205     | -26.1‰  | 100 ± 40     |
| See 10206 | 1011-10206     | -26.1‰  | 100 ± 40     |
| See 10207 | 1011-10207     | -26.1‰  | 100 ± 40     |
| See 10208 | 1011-10208     | -26.1‰  | 100 ± 40     |
| See 10209 | 1011-10209     | -26.1‰  | 100 ± 40     |
| See 10210 | 1011-10210     | -26.1‰  | 100 ± 40     |
| See 10211 | 1011-10211     | -26.1‰  | 100 ± 40     |
| See 10212 | 1011-10212     | -26.1‰  | 100 ± 40     |
| See 10213 | 1011-10213     | -26.1‰  | 100 ± 40     |
| See 10214 | 1011-10214     | -26.1‰  | 100 ± 40     |
| See 10215 | 1011-10215     | -26.1‰  | 100 ± 40     |
| See 10216 | 1011-10216     | -26.1‰  | 100 ± 40     |
| See 10217 | 1011-10217     | -26.1‰  | 100 ± 40     |
| See 10218 | 1011-10218     | -26.1‰  | 100 ± 40     |
| See 10219 | 1011-10219     | -26.1‰  | 100 ± 40     |
| See 10220 | 1011-10220     | -26.1‰  | 100 ± 40     |
| See 10221 | 1011-10221     | -26.1‰  | 100 ± 40     |
| See 10222 | 1011-10222     | -26.1‰  | 100 ± 40     |
| See 10223 | 1011-10223     | -26.1‰  | 100 ± 40     |
| See 10224 | 1011-10224     | -26.1‰  | 100 ± 40     |
| See 10225 | 1011-10225     | -26.1‰  | 100 ± 40     |
| See 10226 | 1011-10226     | -26.1‰  | 100 ± 40     |
| See 10227 | 1011-10227     | -26.1‰  | 100 ± 40     |
| See 10228 | 1011-10228     | -26.1‰  | 100 ± 40     |
| See 10229 | 1011-10229     | -26.1‰  | 100 ± 40     |
| See 10230 | 1011-10230     | -26.1‰  | 100 ± 40     |
| See 10231 | 1011-10231     | -26.1‰  | 100 ± 40     |
| See 10232 | 1011-10232     | -26.1‰  | 100 ± 40     |
| See 10233 | 1011-10233     | -26.1‰  | 100 ± 40     |
| See 10234 | 1011-10234     | -26.1‰  | 100 ± 40     |
| See 10235 | 1011-10235     | -26.1‰  | 100 ± 40     |
| See 10236 | 1011-10236     | -26.1‰  | 100 ± 40     |
| See 10237 | 1011-10237     | -26.1‰  | 100 ± 40     |
| See 10238 | 1011-10238     | -26.1‰  | 100 ± 40     |
| See 10239 | 1011-10239     | -26.1‰  | 100 ± 40     |
| See 10240 | 1011-10240     | -26.1‰  | 100 ± 40     |
| See 10241 | 1011-10241     | -26.1‰  | 100 ± 40     |
| See 10242 | 1011-10242     | -26.1‰  | 100 ± 40     |
| See 10243 | 1011-10243     | -26.1‰  | 100 ± 40     |
| See 10244 | 1011-10244     | -26.1‰  | 100 ± 40     |
| See 10245 | 1011-10245     | -26.1‰  | 100 ± 40     |
| See 10246 | 1011-10246     | -26.1‰  | 100 ± 40     |
| See 10247 | 1011-10247     | -26.1‰  | 100 ± 40     |
| See 10248 | 1011-10248     | -26.1‰  | 100 ± 40     |
| See 10249 | 1011-10249     | -26.1‰  | 100 ± 40     |
| See 10250 | 1011-10250     | -26.1‰  | 100 ± 40     |
| See 10251 | 1011-10251     | -26.1‰  | 100 ± 40     |
| See 10252 | 1011-10252     | -26.1‰  | 100 ± 40     |
| See 10253 | 1011-10253     | -26.1‰  | 100 ± 40     |
| See 10254 | 1011-10254     | -26.1‰  | 100 ± 40     |
| See 10255 | 1011-10255     | -26.1‰  | 100 ± 40     |
| See 10256 | 1011-10256     | -26.1‰  | 100 ± 40     |
| See 10257 | 1011-10257     | -26.1‰  | 100 ± 40     |
| See 10258 | 1011-10258     | -26.1‰  | 100 ± 40     |
| See 10259 | 1011-10259     | -26.1‰  | 100 ± 40     |
| See 10260 | 1011-10260     | -26.1‰  | 100 ± 40     |
| See 10261 | 1011-10261     | -26.1‰  | 100 ± 40     |
| See 10262 | 1011-10262     | -26.1‰  | 100 ± 40     |
| See 10263 | 1011-10263     | -26.1‰  | 100 ± 40     |
| See 10264 | 1011-10264     | -26.1‰  | 100 ± 40     |
| See 10265 | 1011-10265     | -26.1‰  | 100 ± 40     |
| See 10266 | 1011-10266     | -26.1‰  | 100 ± 40     |
| See 10267 | 1011-10267     | -26.1‰  | 100 ± 40     |
| See 10268 | 1011-10268     | -26.1‰  | 100 ± 40     |
| See 10269 | 1011-10269     | -26.1‰  | 100 ± 40     |
| See 10270 | 1011-10270     | -26.1‰  | 100 ± 40     |
| See 10271 | 1011-10271     | -26.1‰  | 100 ± 40     |
| See 10272 | 1011-10272     | -26.1‰  | 100 ± 40     |
| See 10273 | 1011-10273     | -26.1‰  | 100 ± 40     |
| See 10274 | 1011-10274     | -26.1‰  | 100 ± 40     |
| See 10275 | 1011-10275     | -26.1‰  | 100 ± 40     |
| See 10276 | 1011-10276     | -26.1‰  | 100 ± 40     |
| See 10277 | 1011-10277     | -26.1‰  | 100 ± 40     |
| See 10278 | 1011-10278     | -26.1‰  | 100 ± 40     |
| See 10279 | 1011-10279     | -26.1‰  | 100 ± 40     |
| See 10280 | 1011-10280     | -26.1‰  | 100 ± 40     |
| See 10281 | 1011-10281     | -26.1‰  | 100 ± 40     |
| See 10282 | 1011-10282     | -26.1‰  | 100 ± 40     |
| See 10283 | 1011-10283     | -26.1‰  | 100 ± 40     |
| See 10284 | 1011-10284     | -26.1‰  | 100 ± 40     |
| See 10285 | 1011-10285     | -26.1‰  | 100 ± 40     |
| See 10286 | 1011-10286     | -26.1‰  | 100 ± 40     |
| See 10287 | 1011-10287     | -26.1‰  | 100 ± 40     |
| See 10288 | 1011-10288     | -26.1‰  | 100 ± 40     |
| See 10289 | 1011-10289     | -26.1‰  | 100 ± 40     |
| See 10290 | 1011-10290     | -26.1‰  | 100 ± 40     |
| See 10291 | 1011-10291     | -26.1‰  | 100 ± 40     |
| See 10292 | 1011-10292     | -26.1‰  | 100 ± 40     |
| See 10293 | 1011-10293     | -26.1‰  | 100 ± 40     |
| See 10294 | 1011-10294     | -26.1‰  | 100 ± 40     |
| See 10295 | 1011-10295     | -26.1‰  | 100 ± 40     |
| See 102   |                |         |              |



## Crepeelee locale Radiocarbon Report IV

<http://archives.brandonu.ca/en/permalink/descriptions11971>

Part Of: RG 7 Beverley Nicholson fonds

Description Level: Sub sub series

Series Number: 1.5.4

Accession Number: 1-2010

GMD: multiple media

Date Range: 2003-2008

Physical Description: 2 pages

Material Details: Radiocarbon date reports have been scanned in multi-page PDF files.

History /  
Biographical:

Crepeelee locale Radiocarbon Dates. C14 report by IsoTrace Analytic Laboratory for Sarah site XU17.

From 2003 to 2008 field work took place at the Crepeelee locale. The Crepeelee, Graham and Sarah sites were excavated with 75 - 1m x1m units excavated

To help establish the cultural sequence at the locale Radiocarbon dates were obtained from the three sites in the Crepeelee locale.

### Radiocarbon dating

The technique of radiocarbon dating was developed by Willard Libby and his colleagues at the University of Chicago in 1949.

Radiocarbon dating is used to estimate the age of organic remains from archaeological sites. Organic matter has a radioactive form of carbon (C14) that begins to decay upon death. C14 decays at a steady, known rate of a half life of 5,730 years. The technique is useful for material up to 50,000 years. Fluctuations of C14 in the atmosphere can affect results so dates are calibrated against dendrochronology. Radiocarbon dates are calibrated to calendar years.

Dates are reported in radiocarbon years or Before Present. Before Present refers to dates before 1950. The introduction of massive amounts of C14, due to atomic bomb and surface testing of atomic weapons, has widely increased the standard deviation on all dates after A.D. 1700 causing these dates to be unreliable.

Accelerated mass spectrometry can more accurately measure C14 with smaller samples and can date materials to 80,000 years.

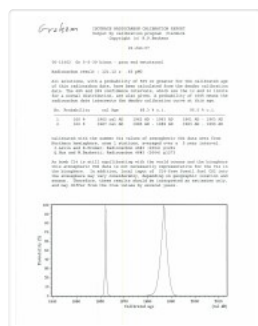
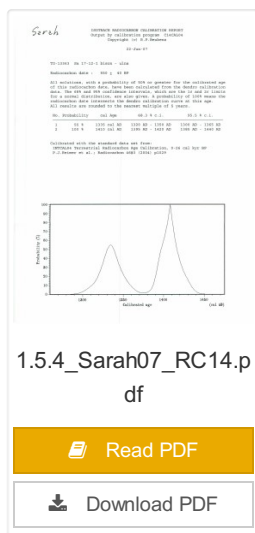
### Scope and Content:

Sub sub series contains radiocarbon dates from: Crepeelee, Sarah and Graham sites.

Name Access: Crepeelee locale Radiocarbon Report IV

Subject Access: Archaeology  
Crepeelee locale  
Crepeelee locale Radiocarbon Dates

### Documents



## Crepeele locale Radiocarbon Report V

<http://archives.brandonu.ca/en/permalink/descriptions11972>

Part Of: RG 7 Beverley Nicholson fonds

Description Level: Sub sub series

Series Number: 1.5.5

Accession Number: 1-2010

GMD: multiple media

Date Range: 2003-2008

Physical Description: 2 pages

Material Details: Radiocarbon date reports have been scanned in multi-page PDF files.

## Biographical:

Crepeele locale Radiocarbon Dates. C14 report by IsoTrace Analytic Laboratory for Graham site XUs 5 and 8.

From 2003 to 2008 field work took place at the Crepeele locale. The Crepeele, Graham and Sarah sites were excavated with 75 - 1m x1m units excavated

To help establish the cultural sequence at the locale Radiocarbon dates were obtained from the three sites in the Crepeele locale.

## Radiocarbon dating

The technique of radiocarbon dating was developed by Willard Libby and his colleagues at the University of Chicago in 1949.

Radiocarbon dating is used to estimate the age of organic remains from archaeological sites. Organic matter has a radioactive form of carbon (C14) that begins to decay upon death. C14 decays at a steady, known rate of a half life of 5,730 years. The technique is useful for material up to 50,000 years. Fluctuations of C14 in the atmosphere can affect results so dates are calibrated against dendrochronology. Radiocarbon dates are calibrated to calendar years.

Dates are reported in radiocarbon years or Before Present. Before Present refers to dates before 1950. The introduction of massive amounts of C14, due to atomic bomb and surface testing of atomic weapons, has widely increased the standard deviation on all dates after A.D. 1700 causing these dates to be unreliable.

Accelerated mass spectrometry can more accurately measure C14 with smaller samples and can date materials to 80,000 years.

### Scope and Content:

Sub sub series contains radiocarbon dates from: Crepeele, Sarah and Graham sites.

Name Access: Crepeele locale Radiocarbon Report V

Subject Access: Archaeology  
Crepee locale  
Crepee locale Radiocarbon Dates

## Documents

[illegible]



## Atkinson site DiMe-27 2003

<http://archives.brandonu.ca/en/permalink/descriptions12081>

|                    |  |
|--------------------|--|
| Part Of:           | RG 7 Beverley Nicholson fonds  |
| Description Level: | Sub sub series   |
| Series Number:     | 2.1.1  |
| Accession Number:  | 1-2010   |
| GMD:               | multiple media   |
| Date Range:        | 2003   |
| Material Details:  | Field journals have been scanned in multi-page PDF files. Artifact catalogues are PDF files in spreadsheet format. Photographs are in jpeg format. |

### History /

#### Biographical:

Based on the results of the testing in 2002 and the radiocarbon date of 6,500 years before present, further excavation was warranted at the Atkinson site. In 2003 Field Chief Holly Alston and crew Shayne Kolesar and Andrea Richards opened a 42m test excavation (units 1 - 4) that included the hearth area.

The site area was covered with a huge sand dune that was slowly sliding into the river as the supporting bank eroded away. As the dune was removed a late woodland camp was found at the dune interface and a large chunk of charcoal dated this occupation to 440+/-60 B.P. cal.1440A.D. This indicated that the dune was a relatively late incursion over the site. This occupation is likely connected to subsequent testing to the east in 2005 that came to be known as Atkinson II.

#### Methodology:

The crew began shovel shaving the upper strata with the intention of establishing an arbitrary datum when artifacts were encountered or when a level 25cm above the hearth was reached. At 25cm above the hearth an arbitrary surface datum was established and excavation in 5cm levels began. The overbank deposited matrix was a dense, compacted silt clay and it was necessary to soak the excavated materials in buckets and then water screen the material with a high pressure pump over ¼ inch hardware cloth.

Lithic flakes were found at 10cm below datum, above the hearth level. In the next level, large bone, a broken projectile point and additional flakes were found. Increasing amounts of bone and lithic flakes were found as the excavation continued through levels 3 to 5. The top of the hearth was identified at 28cm below datum, below a 2cm layer of well-sorted sand. This sand layer was confined to a small area directly overlying the hearth. It was considered to be a deliberate quenching of the hearth.

After the conclusion of excavating level 6 the hearth was profiled and photographed. The charcoal and ash layer of the hearth was shown to be directly below the sand layer. Levels 6 and 7 revealed a bison bone bed that was consistent with primary and secondary butchering including elements from the vertebral column and appendicular skeleton. Two additional Gowen (Mummy Cave Series) projectile points were also recovered adjacent to the hearth. Level 8 continued to produce larger amounts of bone and many lithic flakes. Level 9 produced a few bone fragments and a small number of lithic flakes. At the conclusion of the excavations, the crew shoveled sand down from the dune to protect the site over winter and through any subsequent spring flooding.

#### Scope and Content:

Sub-sub-sub series contains: Summary information of field methodology, number and co-ordinates of excavations, personnel and their staff position; Field journals are daily records of recoveries, features and activities at the site; Site records include excavation level and unit summaries, feature sheets, profiles; sample records and maps; Artifact catalogues are lists and identifications of all artifacts recovered; Photographs are of excavation units, features, the landscape and personnel.

Name Access: Atkinson site 2003  
Subject Access: Archaeology  
North Lauder locale  
Atkinson site DiMe-27  
Atkinson site 2003



### Atkinson site DiMe-27 2004

<http://archives.brandonu.ca/en/permalink/descriptions12190>

Part Of: RG 7 Beverley Nicholson fonds  
Description Level: Sub sub series  
Series Number: 2.1.2  
Accession Number: 1-2010  
GMD: multiple media  
Date Range: 2004  
Material Details: Field journals have been scanned in multi-page PDF files. Artifact catalogues are PDF files in spreadsheet format. Photographs are in jpeg format.



In 2004 Tomasin Playford and her crew of Andrea Richards, Sarah Graham and Shane Kolesar cleared sand cover from over the 2003 excavations and extended sand clearing back from the north edge of the 2003 units to permit implementation of four additional units. During this sand clearing a hearth was identified together with small numbers of lithics and pottery body sherds. This occupation had been noted during sand clearing in 2003 and a charcoal sample was collected and radiocarbon dated to 1440 A.D. This hearth was assigned to Atkinson II, a later occupation.

Four units (5, 6, 7, & 8) were surveyed in adjacent to the 2003 units. Excavation proceeded by means of shovel shaving until the datum pegs from the previous year were located. The new units were then given datum pegs and string boundaries and the high pressure pump was set up for water screening of silt/clay matrix.

Continued to shovel shave levels 1 - 4 and recovered small burned and unburned bone fragments. Level 5 produced a projectile point, an end scraper and a large heat-treated Swan River Chert (SRC) flake. Other SRC flakes were also recovered. Levels 6 and 7 yielded large numbers of flake debitage. The matrix in levels 5-7 contained a scatter of small, bright red ochre particles. The river began to rise on the ninth of June and the site was sandbagged on June 11th, temporarily bringing an end to excavation for Atkinson 1. Tomasin and her crew were relocated to the Crepeelee site, west of Lauder.

On July 20th, Tomasin and her crew returned to the Atkinson site and commenced cleaning up the earlier excavation following the flooding. Following the clean up, excavations were resumed on the units that had been opened. An additional Gowen point was recovered from level 8 as well as some poorly preserved bison bone. A lot flakes and small amounts of bone were recovered on west side of block and larger bone and flakes in bone bed along the east side in levels 8 - 10. Two bifaces were recovered in level 11 and a third in level 13. The excavations were terminated at level 18 when water started coming up through the unit floors.

Scope and Content:

Sub-sub-sub series contains: Summary information of field methodology, number and co-ordinates of excavations, personnel and their staff position; Field journals are daily records of recoveries, features and activities at the site; Site records include excavation level and unit summaries, feature sheets, profiles; sample records and maps; Artifact catalogues are lists and identifications of all artifacts recovered; Photographs are of excavation units, features, the landscape and personnel.

Name Access: Atkinson site 2004  
Subject Access: Archaeology  
North Lauder locale  
Atkinson site DiMe-27  
Atkinson site 2004



## Atkinson II site DiMe-27 2004

<http://archives.brandonu.ca/en/permalink/descriptions12223>

Part Of: RG 7 Beverley Nicholson fonds  
Description Level: Sub sub series  
Series Number: 2.1.3

Accession Number: 1-2010  
GMD: multiple media  
Date Range: 2004  
Material Details: Field journals have been scanned in multi-page PDF files. Artifact catalogues are PDF files in spreadsheet format. Photographs are in jpeg format.

History /

Biographical:

After the flooding of the Souris River in 2004 receded, Tomasin Playford and her crew of Andrea Richards, Sarah Graham and Shane Kolesar returned to the Atkinson site and commenced cleaning up the earlier excavation of Atkinson.

An area east of the Atkinson excavations was also opened for testing in 2004. This area was designated as Atkinson II. In some of the field notes it is referred to as Atkinson East. A test block was opened and fenced off from the cattle with snow fence. A 4m2 block was surveyed in (units 13 - 16) and two partial units that were truncated by the riverbank (units 11 & 12) were also placed to the south of the 4m2 block.

Three of the students who had completed the recent field school were hired as crew. Jessica McKenzie, Evie Fevez and Emily Ansell joined the crew at the Atkinson II site.

Recoveries from XU 13 - 16:

Large bison bone was recovered from units 11 and 12 and a metal tobacco box seal was recovered from unit 12. More small pieces of metal found in levels 2 and three together with small bone fragments. A bone fragment with butchering marks from a metal tool was recovered from level 6 and pottery was found in level 9. A few lithic flakes were found in level 13 and in a trench at the bottom of unit 13 above a calcite cemented layer. Recoveries from these tests were sparse and diminished as the excavation series became more distant from the river. It is likely that the remains that were recovered represent the northern edge of these occupations.

The upper occupation at Atkinson II appears to be an early historic occupation with a sparse scatter of bone and a few pieces of metal. The lower layers, below level 7 are likely precontact. Units 9 and 10 were dug as test pits and produced very little in the way of cultural materials.

Scope and Content:

Sub-sub-sub series contains: Summary information of field methodology, number and co-ordinates of excavations, personnel and their staff position; Field journals are daily records of recoveries, features and activities at the site; Site records include excavation level and unit summaries, feature sheets, profiles; sample records and maps; Artifact catalogues are lists and identifications of all artifacts recovered; Photographs are of excavation units, features, the landscape and personnel.

Name Access: Atkinson II site DiMe-27 2004

Subject Access: Archaeology  
North Lauder locale  
Atkinson site DiMe-27  
Atkinson II site 2004



## Lovstrom Block D 1987

<http://archives.brandonu.ca/en/permalink/descriptions12541>

Part Of: RG 7 Beverley Nicholson fonds  
Description Level: Sub sub series  
Series Number: 3.5.1  
Accession Number: 1-2010  
GMD: multiple media  
Date Range: 1987  
Material Details: Field journals have been scanned in multi-page PDF files. Artifact catalogues are PDF files in spreadsheet format. Photographs are in jpeg format.

### History /

#### Biographical:

Block D is a wooded with oak and an understory of saskatoon and hazelnut with a thick ground cover of poison ivy and sarsaparilla. Root and rodent disturbance was extensive.

Directed by Dr. Nicholson and with Jane Gibson as crew chief, two units were opened in Block D in 1987. A hearth was identified with a ring of stones containing charcoal and burnt bone. Recoveries included two rim sherds with tool-impressed decorations along the outer edge and two prairie side-notched points. Associated bone was primarily appendicular, indicating secondary butchering.

A radiocarbon date of 230+/-90 B.P. recovered in 1987 from 17 cm below surface is consistent with a Protohistoric occupation.

#### Scope and Content:

Sub-sub-sub series contains: Summary information of field methodology, number and co-ordinates of excavations, personnel and their staff position; Field journals are daily records of recoveries, features and activities at the site; Site records include excavation level and unit summaries, feature sheets, profiles; sample records and maps; Artifact catalogues are lists and identifications of all artifacts recovered; Photographs are of excavation units, features, the landscape and personnel.

Name Access: Lovstrom Block D 1987  
Subject Access: Archaeology  
Lovstrom locale  
Lovstrom Block D



## Lovstrom Block D 1988

<http://archives.brandonu.ca/en/permalink/descriptions12554>

Part Of: RG 7 Beverley Nicholson fonds  
Description Level: Sub sub series  
Series Number: 3.5.2  
Accession Number: 1-2010  
GMD: multiple media  
Date Range: 1988  
Material Details: Field journals have been scanned in multi-page PDF files. Artifact catalogues are PDF files in spreadsheet format. Photographs are in jpeg format.

### History /

#### Biographical:

Block D is a wooded with oak and an understory of saskatoon and hazelnut with a thick ground cover of poison ivy and sarsaparilla. Root and rodent disturbance was extensive.

Directed by Dr. Nicholson with Ian Kuijit as crew chief, five units were opened in Block D in 1988. Four units were excavated: 88, 91, 92 and 94. A feature in units 91 and 92 contained extensive deposits of large bison bone and fire-cracked rock. Several of the lower limb elements were articulated. Bone deposits were associated with numerous large fire-cracked rocks and were clustered in an area of one meter. Also recovered were a side-notched projectile point and two historic gun flints.

Judging from the association of the gun flints, projectile points, and bison bone, as well as the radiocarbon date of 230+/-90 B.P. recovered in 1987, it appears that this feature is from the Protohistoric period and related to refuse disposal.

#### Scope and Content:

Sub-sub-sub series contains: Summary information of field methodology, number and co-ordinates of excavations, personnel and their staff position; Field journals are daily records of recoveries, features and activities at the site; Site records include excavation level and unit summaries, feature sheets, profiles; sample records and maps; Artifact catalogues are lists and identifications of all artifacts recovered; Photographs are of excavation units, features, the landscape and personnel.

Name Access: Lovstrom Block D 1988  
Subject Access: Archaeology  
Lovstrom locale  
Lovstrom Block D



## Atkinson site DiMe-27 2006

<http://archives.brandonu.ca/en/permalink/descriptions12258>

Part Of: RG 7 Beverley Nicholson fonds  
Description Level: Sub sub series  
Series Number: 2.1.4  
Accession Number: 1-2010  
GMD: multiple media  
Date Range: 2006

Material Details: Field journals have been scanned in multi-page PDF files. Artifact catalogues are PDF files in spreadsheet format. Photographs are in jpeg format.

History /

Biographical:

The Atkinson site had been flooded in 2005 and there was concern about the amount of damage that might have occurred. A small crew of Tomasin Playford, Michelle Drysdale and Jessica McKenzie returned to the Atkinson site with the goals of obtaining a detailed profile of the stratigraphy at the north end of the occupation and to determine if the site extended contiguously towards the east. Two test pits were planned as well as the investigation of a couple of hearths found eroding from the riverbank. Work commenced July 4th and finished July 21st.

To the north of XU 8 (Gowen occupation) an excavation unit 18 was opened and shovel shaved to a depth of 200cm. At 195cm below surface a point bar deposit was identified indicating that any lower occupations would likely have been eroded by an earlier channel cutting event prior to formation of this point bar depositional event. Golf tees were inserted into the edge of the profile to indicate the 5cm levels superimposed on a digital photo of the section. Lithic flakes and bone fragments were scattered throughout the stratigraphic column. A radiocarbon date of 440 B.P. was obtained from the unit, indicating a much later occupation than Gowen.

Unit 19 was excavated but only yielded a small Besant component containing a small hearth (H#3). In level 9, a point tip and a small biface as well as a few undecorated pot sherds were recovered. These two units defined the extent of the Atkinson I site. An unknowable area of the site has been eroded away by the encroaching Souris River.

The two small exposed hearths were excavated but only yielded a small amount of material. Hearth 4, at the western edge of the Atkinson block yielded only a small amount of charcoal, mixed with burnt bone and a few small lithic flakes. Hearth 5, located in the high cut bank west of the main site yielded a small amount of bone from a small ungulate, a muskrat and a bird as well as a percussion cap. This latter recovery indicated that this was an early historic period site.

Scope and Content:

Sub-sub-sub series contains: Summary information of field methodology, number and coordinates of excavations, personnel and their staff position; Field journals are daily records of recoveries, features and activities at the site; Site records include excavation level and unit summaries, feature sheets, profiles; sample records and maps; Artifact catalogues are lists and identifications of all artifacts recovered; Photographs are of excavation units, features, the landscape and personnel.

Name Access: Atkinson site 2006

Subject Access: Archaeology  
North Lauder locale  
Atkinson site DiMe-27  
Atkinson site 2006



## Flintstone Hill 1997

<http://archives.brandonu.ca/en/permalink/descriptions12284>

Part Of: RG 7 Beverley Nicholson fonds  
Description Level: Sub sub series  
Series Number: 2.2.1  
Accession Number: 1-2010  
GMD: multiple media  
Date Range: 1997  
Material Details: Field journals have been scanned in multi-page PDF files. Artifact catalogues are PDF files in spreadsheet format. Photographs are in jpeg format.

History /

Biographical:

During the mid 1990's to the early 2000's archaeological surveying and testing took place on Flintstone Hill. In 1997 testing at the site revealed a bison skull eroding from the cutbank. A field crew dug a series of overlapping trenches down the slope of the profile and produced a schematic drawing. A radiocarbon date from the lower edge of the profile gave a date of 10,400 RCY.

Test units along the cutbank recovered lithics, soil samples, fire-cracked rock, charcoal, bison remains including a very large bison skull measuring 430-440 cm and thought to be an ancient species.

Radiocarbon dates at Flintstone hill gave dates of: a hearth dating to 3250+/-70 R.C.Y. (BETA 109529); a butchered atlas bone 4090+/-70 R.C.Y. (BETA 109990); and bone fragments accompanied by Swan River Chert and Knife River Flint lithic flakes 5350+/-50 (BETA 109530). While no diagnostic tools were recovered, these dates suggest that this occupation, which is contemporary with the Atkinson site, may be a Gowen occupation.

Scope and Content:

Sub-sub-sub series contains: Summary information of field methodology, number and co-ordinates of excavations, personnel and their staff position; Field journals are daily records of recoveries, features and activities at the site; Site records include excavation level and unit summaries, feature sheets, profiles; sample records and maps; Artifact catalogues are lists and identifications of all artifacts recovered; Photographs are of excavation units, features, the landscape and personnel.

Name Access: Flintstone Hill 1997  
Subject Access: Archaeology  
North Lauder locale  
Flintstone Hill - DiMe-26  
Flintstone Hill 1997



## Flintstone Hill 1998-2000

<http://archives.brandonu.ca/en/permalink/descriptions12290>

Part Of: RG 7 Beverley Nicholson fonds  
Description Level: Sub sub series  
Series Number: 2.2.2  
Accession Number: 1-2010  
GMD: multiple media  
Date Range: 1998-2000  
Material Details: Field journals have been scanned in multi-page PDF files. Artifact catalogues are PDF files in spreadsheet format. Photographs are in jpeg format.

### History /

#### Biographical:

In 1998, 1999 and 2000 further testing took place on Flintstone Hill. Five test units were excavated and a series of small exploratory tests took place. Recoveries included: lithics, soil samples, fire-cracked rock, charcoal, and bison bones.

Unfortunately, despite the encouraging radiocarbon dates and scattered recoveries there was no area where extensive excavations were feasible. The unstable nature of the river bank with frequent spring flooding and erosion of the dunes has impacted potential sites.

#### Scope and Content:

Sub-sub-sub series contains: Summary information of field methodology, number and co-ordinates of excavations, personnel and their staff position; Field journals are daily records of recoveries, features and activities at the site; Site records include excavation level and unit summaries, feature sheets, profiles; sample records and maps; Artifact catalogues are lists and identifications of all artifacts recovered; Photographs are of excavation units, features, the landscape and personnel.

Name Access: Flintstone Hill 1998-2000  
Subject Access: Archaeology  
North Lauder locale  
Flintstone Hill - DiMe-26  
Flintstone Hill 1998-2000