

S. J. McKee Archives



Rutledge Garage (Neepawa)

<http://archives.brandonu.ca/en/permalink/descriptions13458>

Part Of: CKX fonds
Creator: CKX
Description Level: Item
Series Number: R
Item Number: 11-2010.R40b
Accession Number: 11-2010
GMD: graphic
Date Range: after 1954
Physical Description: 2.5" x 2.5" (b/w)
Material Details: Negative

Custodial History:

See fonds level of the CKX records for custodial history.

Scope and Content:

Image of the Rutledge Garage with two men and a car.

Name Access: CKX
Rutledge Garage
Subject Access: businesses
cars
building exteriors
persons
business and professional people
garages
Storage Location: CKX fonds - 2010 accessions

Images





Rutledge Garage (Neepawa)

<http://archives.brandonu.ca/en/permalink/descriptions13459>

Part Of: CKX fonds
Creator: CKX
Description Level: Item
Series Number: R
Item Number: 11-2010.R40a
Accession Number: 11-2010
GMD: graphic
Date Range: after 1954
Physical Description: 2.5" x 2.5" (b/w)
Material Details: Negative

Custodial History:

See fonds level of the CKX records for custodial history.

Scope and Content:

Image of the Rutledge Garage building.

Name Access: CKX
Rutledge Garage
Markle Sheet Metal
Subject Access: businesses
cars
building exteriors
garages
signs and signboards
Storage Location: CKX fonds - 2010 accessions

Images





Royalite tire service trucks

<http://archives.brandonu.ca/en/permalink/descriptions13532>

Part Of: CKX fonds
Creator: CKX
Description Level: Item
Series Number: R
Item Number: 11-2010.R4
Accession Number: 11-2010
GMD: graphic
Date Range: 1967
Physical Description: 1.5" x 1.5" (b/w)
Material Details: Negative

Custodial History:

See fonds level of the CKX records for custodial history.

Scope and Content:

Image of a Royalite building.

Name Access: CKX
Royalite
Subject Access: cars
garages
service stations
vehicles
signs and signboards

Storage Location: CKX fonds - 2010 accessions

Images





Royalite windfall \$1M winner

<http://archives.brandonu.ca/en/permalink/descriptions13533>

Part Of: CKX fonds
Creator: CKX
Description Level: Item
Series Number: R
Item Number: 11-2010.R3
Accession Number: 11-2010
GMD: graphic
Date Range: 1967
Physical Description: 1.5" x 1.5" (b/w)
Material Details: Negative

Custodial History:

See fonds level of the CKX records for custodial history.

Scope and Content:

Image of a Royalite contest winner.

Name Access: CKX
Royalite
Subject Access: persons
garages
service stations
business and professional people
contests
Storage Location: CKX fonds - 2010 accessions

Images





Royalite windfall \$1M winner

<http://archives.brandonu.ca/en/permalink/descriptions13534>

Part Of: CKX fonds
 Creator: CKX
 Description Level: Item
 Series Number: R
 Item Number: 11-2010.R3
 Accession Number: 11-2010
 GMD: graphic
 Date Range: 1967
 Physical Description: 1.5" x 1.5" (b/w)
 Material Details: Negative

Custodial History:

See fonds level of the CKX records for custodial history.

Scope and Content:

Image of a Royalite contest winner.

Name Access: CKX
 Royalite
 Subject Access: persons
 garages
 service stations
 business and professional people
 contests

Storage Location: CKX fonds - 2010 accessions

Images



E.E. Lehigh Ltd.

<http://archives.brandonu.ca/en/permalink/descriptions13796>

Part Of: Fred McGuinness collection
 Creator: Photograph: C.J. Smith
 Description Level: Item
 Series Number: McG 9
 Item Number: 20-2009.105

Accession Number: 20-2009
GMD: graphic
Date Range: [1929-1931]
Physical Description: 9.5" x 7.5" (b/w)
Material Details: On matting

History /

Biographical:

The 1901 Canadian Census places the Lehigh family near Brockville, Ontario, where Everett E. Lehigh (b. 19 May 1881) was farming with his widowed father Solon (b. 20 Aug 1849) and younger sister, Edna (b. 08 Feb 1884). The findagrave.com genealogical website identifies a Mary Wickware as marrying Everett E. Lehigh in Algonquin, Ontario, on 04 April 1905.

E.E. Lehigh appears in the Henderson's Brandon City Directories in 1919. By 1923, he was Vice-President of Motors Ltd., which had its shop on 151-7th Street. By 1925, Lehigh had taken over the garage, renaming it Lehigh Motors, which became the sole agent for McLaughlin Motor Cars. By 1927, Lehigh Motors had opened a second branch on 12th Street and Princess Avenue, which was formerly the Brandon Auto Garage. Lehigh had become the exclusive dealer for McLaughlin-Buick, Pontiac, and Oldsmobile motor cars.

It appears Lehigh moved his business, E.E. Lehigh Ltd., to 799 Pacific Avenue by 1929. By then, Lehigh had a head office in Winnipeg at 640 Portage Avenue where he served as president and was the provincial distributor for Rugby trucks and Durant cars. Although E.E. Lehigh had a residence in Brandon (325 - 14th Street), Mr. S.G. Cunningham was listed as the Brandon representative for Lehigh Motors Ltd. in the Henderson Directories. By 1931, E.E. Lehigh Ltd. had moved once again, this time to 151-153 - 9th Street.

E.E. Lehigh disappears from the Henderson's Brandon City Directory by 1933 and a Mrs. E.E. Lehigh (possibly Mary (Wickware) Lehigh, d.21 July 1943) is listed under the 14th Street residence. The 9th Street garage address is divided between Munns Taxi (151-9th Street) and Wheat City Auto Wreckers (153-9th Street.)

Custodial History:

Photograph was in possession of Mrs. Ruby Miles, who passed the image on to Fred McGuinness. McGuinness makes reference to Mrs. Miles and this photograph in his Sunbeams column (Source: F.A. Rosser, "Another interesting chat with a daughter of the plains," Brandon Sun 18 Aug 1981).

Scope and Content:

Photograph shows a group portrait of 33 individuals standing and seated in front of the business E.E. Lehigh Ltd., Brandon. The storefront window has a sign that reads: Durant Motor Cars, E.E. Lehigh Ltd., Brandon. The door to the business has Lehigh Motors stencilled on the window. The men are wearing jackets and ties, and there are three women, possibly clerical staff, wearing 1920s era dresses. The elderly man seated in the centre of the photograph, wearing a long-sleeved white dress shirt might be Everett E. Lehigh.

Notes: Writing on the front of the photograph is embossed: C.J. Smith

Name Access: E.E. Lehigh

Subject Access: garages

Transportation

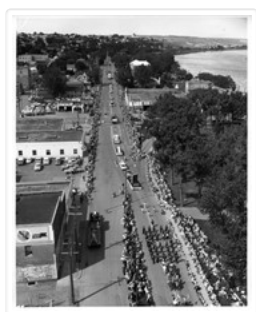
Brandon business buildings & facilities before 1940

store exteriors

Storage Location: McGuinness oversize storage drawer (1-2015)

Related Material: Ruby Miles collection 14-2003

Images



Medicine Hat Exhibition and Stampede - Parade Day 4

<http://archives.brandonu.ca/en/permalink/descriptions14145>

Part Of: Fred McGuinness collection
 Creator: Photographer: Howard Heid, Medicine Hat News
 Description Level: Item
 Series Number: McG 9
 Item Number: 1-2015.214
 Accession Number: 1-2015
 GMD: graphic
 Date Range: 1962
 Physical Description: 10" x 8" (b/w)

History /

Biographical:

The Medicine Hat Exhibition and Stampede Parade Day was held on Thursday, July 19, 1962, at 9:30 a.m. The local newspaper reported that approximately 24,000 people were in attendance to see parade marshall Rod Ashburner leading 175 entries consisting of 90 floats, 75 horses, and 10 bands. There were 19 parade categories eligible for \$12,000 in prize money and included: junior and senior cowboys and cowgirls; fancy and Shetland ponies; sulky class open; comic, commercial, industrial and organizational floats; decorated cars; special ranch class; 4-H Clubs; and a non-competitive class.

The parade route started at Second St. and Allowance Ave., from Second St. to Ash Ave., north on Ash to First St. SE., from First St. S.E. to Fourth Ave., south to Second St. to South Railway St., south on South Railway St. to Third St., with a finish at McLeod Trail. A route map was published in the Medicine Hat News the day before the parade.

Aerial photographs of the parade were taken by Medicine Hat News photographer Howard Heid (1930-2005) from the private helicopter of John Bourn. Bourn was a pilot from Woodville, Wisconsin, who chartered his four-seater helicopter for sight-seers at exhibitions and stampedes across the county.

(Sources: Pat Currie, "Let 'Er Go!," Medicine Hat News, 19 July 1962,1; Harald Gunderson, "'Eye in the Sky' Best Parade View," Medicine Hat News, 19 July 1962,1; "Parade Starts at 9:30 Sharp," 18 July 1962)

Scope and Content:

Photograph shows an aerial view of the Medicine Hat Exhibition and Stampede Parade route with a focus on the First Street SE. A number of gas stations and garages are visible along this route and include Texaco, Shell, Ford, and B/A. The Fraternal Order of Eagles lodge is also visible.

Notes: This photograph appeared on the front page of The Medicine Hat News (19 July 1962).

Name Access: Medicine Hat
South Saskatchewan River

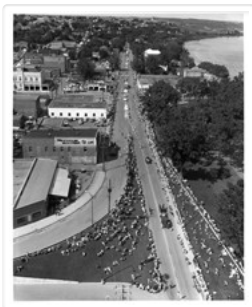
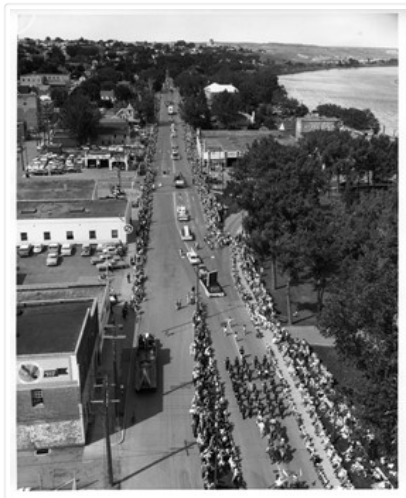
Subject Access: parades
floats
aerial photography
aerial views
street scenes
fraternal organizations
garages

Repro Restriction: Subject to Canadian Copyright Law

Storage Location: RG 5 photograph storage drawer 2 (hanging photos)

Arrangement:
BR #3 Family photos

Images



Medicine Hat Exhibition and Stampede - Parade Day 6

<http://archives.brandonu.ca/en/permalink/descriptions14147>

Part Of: Fred McGuinness collection

Creator: Photographer: Howard Heid, Medicine Hat News

Description Level: Item

Series Number: McG 9

Item Number: 1-2015.216

Accession Number: 1-2015

GMD: graphic

Date Range: 1962

Physical Description: 10" x 8" (b/w)

History /

Biographical:

The Medicine Hat Exhibition and Stampede Parade Day was held on Thursday, July 19, 1962, at 9:30 a.m. The local newspaper reported that approximately 24,000 people were in attendance to see parade marshal Rod Ashburner leading 175 entries consisting of 90 floats, 75 horses, and 10 bands. There were 19 parade categories eligible for \$12,000 in prize money and included: junior and senior cowboys and cowgirls; fancy and Shetland ponies; sulky class open; comic, commercial, industrial and organizational floats; decorated cars; special ranch class; 4-H Clubs; and a non-competitive class.

The parade route started at Second St. and Allowance Ave., from Second St. to Ash Ave., north on Ash to First St. SE., from First St. S.E. to Fourth Ave., south to Second St. to South Railway St., south on South Railway St. to Third St., with a finish at McLeod Trail. A route map was published in the Medicine Hat News the day before the parade.

Aerial photographs of the parade were taken by Medicine Hat News photographer Howard Heid (1930-2005) from the private helicopter of John Bourn. Bourn was a pilot from Woodville, Wisconsin, who chartered his four-seater helicopter for sight-seers at exhibitions and stampedes across the county.

(Sources: Pat Currie, "Let 'Er Go!," Medicine Hat News, 19 July 1962,1; Harald Gunderson, "'Eye in the Sky' Best Parade View," Medicine Hat News, 19 July 1962,1; "Parade Starts at 9:30 Sharp," 18 July 1962)

Scope and Content:

Photograph shows an aerial view of the Medicine Hat Exhibition and Stampede Parade route with a focus on the First Street SE and and the South Railway Street merge. A number of gas stations and garages are visible along this route and include Texaco, Shell, Ford, and B/A. The Fraternal Order of Eagles lodge is also visible.

Notes: This photograph shows the neighbourhood before rezoning and commercial development.

Name Access: Medicine Hat
South Saskatchewan River

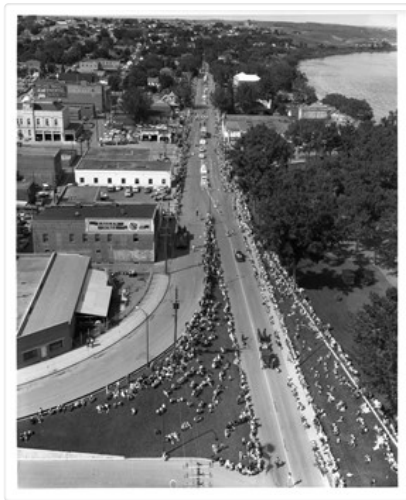
Subject Access: parades
floats
aerial photography
aerial views
street scenes
gardens
fraternal organizations
garages

Repro Restriction: Subject to Canadian Copyright Law

Storage Location: RG 5 photograph storage drawer 2 (hanging photos)

Arrangement:
BR #3 Family photos

Images



Medicine Hat Exhibition and Stampede - Parade Day 7

<http://archives.brandonu.ca/en/permalink/descriptions14148>

Part Of: Fred McGuinness collection
 Creator: Photographer: Howard Heid, Medicine Hat News
 Description Level: Item
 Series Number: McG 9
 Item Number: 1-2015.217
 Accession Number: 1-2015
 GMD: graphic
 Date Range: 1962
 Physical Description: 10" x 8" (b/w)

History /

Biographical:

The Medicine Hat Exhibition and Stampede Parade Day was held on Thursday, July 19, 1962, at 9:30 a.m. The local newspaper reported that approximately 24,000 people were in attendance to see parade marshal Rod Ashburner leading 175 entries consisting of 90 floats, 75 horses, and 10 bands. There were 19 parade categories eligible for \$12,000 in prize money and included: junior and senior cowboys and cowgirls; fancy and Shetland ponies; sulky class open; comic, commercial, industrial and organizational floats; decorated cars; special ranch class; 4-H Clubs; and a non-competitive class.

The parade route started at Second St. and Allowance Ave., from Second St. to Ash Ave., north on Ash to First St. S.E., from First St. S.E. to Fourth Ave., south to Second St. to South Railway St., south on South Railway St. to Third St., with a finish at McLeod Trail. A route map was published in the Medicine Hat News the day before the parade.

Aerial photographs of the parade were taken by Medicine Hat News photographer Howard Heid (1930-2005) from the private helicopter of John Bourn. Bourn was a pilot from Woodville, Wisconsin, who chartered his four-seater helicopter for sight-seers at exhibitions and stampedes across the county.

(Sources: Pat Currie, "Let 'Er Go!," Medicine Hat News, 19 July 1962,1; Harald Gunderson, "'Eye in the Sky' Best Parade View," Medicine Hat News, 19 July 1962,1; "Parade Starts at 9:30 Sharp," 18 July 1962)

Scope and Content:

Photograph shows an aerial view of the Medicine Hat Exhibition and Stampede Parade route with a focus on the First Street SE and Sixth Avenue intersection. A number of gas stations and garages are visible along this route and include Texaco, Shell, Ford, and B/A. A number of observers can be seen sitting on rooftops.

Notes: This photograph shows the neighbourhood before rezoning and commercial development.

Name Access: Medicine Hat
South Saskatchewan River

Subject Access: parades
floats
aerial photography
aerial views
street scenes
garages

Repro Restriction: Subject to Canadian Copyright Law

Storage Location: RG 5 photograph storage drawer 2 (hanging photos)

Arrangement:
BR #3 Family photos

Images



Medicine Hat Exhibition and Stampede - Parade Day 8

<http://archives.brandonu.ca/en/permalink/descriptions14149>

Part Of: Fred McGuinness collection
Creator: Photographer: Howard Heid, Medicine Hat News
Description Level: Item
Series Number: McG 9
Item Number: 1-2015.218
Accession Number: 1-2015

GMD: graphic
Date Range: 1962
Physical Description: 10" x 8" (b/w)
History /
Biographical:

The Medicine Hat Exhibition and Stampede Parade Day was held on Thursday, July 19, 1962, at 9:30 a.m. The local newspaper reported that approximately 24,000 people were in attendance to see parade marshal Rod Ashburner leading 175 entries consisting of 90 floats, 75 horses, and 10 bands. There were 19 parade categories eligible for \$12,000 in prize money and included: junior and senior cowboys and cowgirls; fancy and Shetland ponies; sulky class open; comic, commercial, industrial and organizational floats; decorated cars; special ranch class; 4-H Clubs; and a non-competitive class.

The parade route started at Second St. and Allowance Ave., from Second St. to Ash Ave., north on Ash to First St. SE., from First St. S.E. to Fourth Ave., south to Second St. to South Railway St., south on South Railway St. to Third St., with a finish at McLeod Trail. A route map was published in the Medicine Hat News the day before the parade.

Aerial photographs of the parade were taken by Medicine Hat News photographer Howard Heid (1930-2005) from the private helicopter of John Bourn. Bourn was a pilot from Woodville, Wisconsin, who chartered his four-seater helicopter for sight-seers at exhibitions and stampedes across the county.

(Sources: Pat Currie, "Let 'Er Go!," Medicine Hat News, 19 July 1962,1; Harald Gunderson, "'Eye in the Sky' Best Parade View," Medicine Hat News, 19 July 1962,1; "Parade Starts at 9:30 Sharp," 18 July 1962)

Scope and Content:

Photograph shows an aerial view of the Medicine Hat Exhibition and Stampede Parade route, with a focus on Second Street SE. Visible store signs include: Gardener's Used Cars, Provincial Treasury Branch, Furvey's Furniture and Appliances, J.J. Moore & Son Furniture, Alberta Credit Jewellers, James Richardson & Sons, Medicine Hat Gas Power Water City Owned Utilities.

Notes: This photograph shows the neighbourhood before rezoning and commercial development.

Name Access: Medicine Hat
South Saskatchewan River

Subject Access: parades
floats
aerial photography
aerial views
street scenes
garages

Repro Restriction: Subject to Canadian Copyright Law

Storage Location: RG 5 photograph storage drawer 2 (hanging photos)

Arrangement:
BR #3 Family photos

Images





Western Motors Ltd., Brandon, Manitoba

<http://archives.brandonu.ca/en/permalink/descriptions8411>

Part Of: Joseph H. Hughes collection

Description Level: Item

Series Number: 3-1997.1

Item Number: 3-1997.1.33

Accession Number: 3-1997

GMD: graphic

Date Range: c. 1950

Physical Description: 10" x 8" (b/w)

Physical Condition: good

Scope and Content:

Photograph shows Western Motors Ltd. on the southwest corner of 10th Street and Princess Avenue. Anglo gas station is part of the car shop, which sells GM, Chevrolet, and Oldsmobiles.

Hutchings' Drugs is on the ground floor of the Hughes Building on the northwest corner of 10th Street and Princess. Manufacturers Life occupies the second storey.

Name Access: Western Motors Ltd.

Hutchings Drugs

Hughes Building

10th Street

Princess Avenue

Subject Access: downtowns

street scenes

Brandon business buildings & facilities after 1940

building exteriors

car lots

drug stores

garages

Storage Location: RG 5 photograph storage drawer

Images





Prince Edward Hotel, Brandon, Manitoba

<http://archives.brandonu.ca/en/permalink/descriptions8412>

Part Of: Joseph H. Hughes collection

Description Level: Item

Series Number: 3-1997.1

Item Number: 3-1997.1.34

Accession Number: 3-1997

GMD: graphic

Date Range: c. 1965

Physical Description: 10" x 8" (b/w)

Physical Condition: good

Scope and Content:

Photograph shows the north face of the Prince Edward Hotel on Princess Avenue. To the east of the hotel is Old City Hall with the military monument (which has since been relocated to the Brandon Armoury). On the west side of the hotel is Wheelers Esso Service Station.

Notes: The photograph appears to be taken from the Hughes Building on 10th Street.

Name Access: Princess Avenue
City Hall
Prince Edward Hotel
Wheelers Esso Service

Subject Access: downtowns
street scenes
Brandon business buildings & facilities after 1940
building exteriors
hotels
garages
service stations
memorials

Storage Location: RG 5 photograph storage drawer

Images





Princess Avenue facing east from 10th Street, Brandon, Manitoba

<http://archives.brandonu.ca/en/permalink/descriptions8413>

Part Of: Joseph H. Hughes collection

Description Level: Item

Series Number: 3-1997.1

Item Number: 3-1997.1.35

Accession Number: 3-1997

GMD: graphic

Date Range: c. 1965

Physical Description: 10" x 8" (b/w)

Physical Condition: good

Scope and Content:

Photograph shows Princess Avenue facing east from 10th Street. On the north side of Princess Avenue, a B/A Service Station, Princess Cafe, Lindenberg Seeds, and the Central Fire Station are visible. Old City Hall with the war memorial and the Prince Edward Hotel are visible on the south side of Princess Avenue. Traffic is travelling one-way on Princess Avenue.

Name Access: Princess Avenue
City Hall
Prince Edward Hotel
B/A Service Station
Princess Cafe
Lindenberg Seeds
Central Fire Station

Subject Access: downtowns
street scenes
Brandon business buildings & facilities after 1940
building exteriors
hotels
garages
service stations
cafes
memorials

Storage Location: RG 5 photograph storage drawer

Images





Greyhound Bus Depot, 11th Street and Princess Avenue, Brandon, Manitoba

<http://archives.brandonu.ca/en/permalink/descriptions8414>

Part Of: Joseph H. Hughes collection

Description Level: Item

Series Number: 3-1997.1

Item Number: 3-1997.1.36

Accession Number: 3-1997

GMD: graphic

Date Range: c.1955

Physical Description: 10" x 8" (b/w)

Physical Condition: good

Scope and Content:

Photograph shows the Greyhound Bus Depot at 11th Street and Princess Avenue. Western Motors, Wheelers Esso Station, and the Prince Edward Hotel are visible along the south side of Princess Avenue. Traffic is travelling one-way on Princess Avenue.

Name Access: Greyhound

Western Motors Ltd.

Esso

Prince Edward Hotel

Princess Avenue

11th Street

Subject Access: downtowns

street scenes

Brandon business buildings & facilities after 1940

building exteriors

hotels

garages

bus depots

Storage Location: RG 5 photograph storage drawer

Images





Western Motors at southwest corner 10th and Princess Avenue, Brandon, Manitoba

<http://archives.brandonu.ca/en/permalink/descriptions8415>

Part Of: Joseph H. Hughes collection

Description Level: Item

Series Number: 3-1997.1

Item Number: 3-1997.1.37

Accession Number: 3-1997

GMD: graphic

Date Range: c.1955

Physical Description: 10" x 8" (b/w)

Physical Condition: good

Scope and Content:

Photograph shows Western Motors Ltd. on the southwest corner of 10th Street and Princess Avenue. To the west of the car dealership/garage is the Greyhound Bus Station and its Maxwell House Cafe as well as the court house.

Name Access: Greyhound
Western Motors Ltd.
Princess Avenue
Maxwell House Grill
Court House

Subject Access: downtowns
street scenes
Brandon business buildings & facilities after 1940
building exteriors
winter
bus depots
garages

Storage Location: RG 5 photograph storage drawer

Images



West side 200-block 10th Street, south of Princess Avenue,



Brandon, Manitoba

<http://archives.brandonu.ca/en/permalink/descriptions8416>

Part Of: Joseph H. Hughes collection

Description Level: Item

Series Number: 3-1997.1

Item Number: 3-1997.1.38

Accession Number: 3-1997

GMD: graphic

Date Range: c. 1955

Physical Description: 10" x 8" (b/w)

Physical Condition: good

Scope and Content:

Photograph shows the west side of the 200-block on 10th Street. Visible businesses include: Chamber of Commerce Tourist Information, Dominion Tire & Radio Co., Bonnie's Bonnet Shop, Steve's Grill, Wally's Taxi, and Western Motors Ltd. The painted advertisement for Doig, Rankin and Robertson is visible on the Alexandra Block. Christmas ornaments are displayed from light standards and include Santa Claus and a Christmas elf.

Name Access: Chamber of Commerce
Dominion Tire & Radio Co.
Bonnie's Bonnet Shop
Steve's Grill
Wally's Taxi
Western Motors
10th Street

Subject Access: downtowns
street scenes
Brandon business buildings & facilities after 1940
building exteriors
winter
garages
taxi
restaurants
Christmas

Storage Location: RG 5 photograph storage drawer

Images





West side 200-block 10th Street facing south from Princess Avenue, Brandon, Manitoba

<http://archives.brandonu.ca/en/permalink/descriptions8417>

Part Of: Joseph H. Hughes collection

Description Level: Item

Series Number: 3-1997.1

Item Number: 3-1997.1.39

Accession Number: 3-1997

GMD: graphic

Date Range: c.1955

Physical Description: 10" x 8" (b/w)

Physical Condition: good

Scope and Content:

Photograph shows the west side of the 200-block on 10th Street. Visible businesses include: Chamber of Commerce Tourist Information, Dominion Tire & Radio Co., Steve's Grill, Wally's Taxi, and the garage entrances to Western Motors Ltd. A Santa Claus Christmas ornament is displayed from a light standard.

Name Access: Chamber of Commerce
Dominion Tire & Radio Co.
Steve's Grill
Wally's Taxi
Western Motors
10th Street

Subject Access: downtowns
street scenes
Brandon business buildings & facilities after 1940
building exteriors
winter
garages
taxi
restaurants
Christmas

Storage Location: RG 5 photograph storage drawer

Images





Red Indian Station (Gasoline) north side Princess Avenue between 9th Street and 10th Street, Brandon, Manitoba

<http://archives.brandonu.ca/en/permalink/descriptions8418>

Part Of: Joseph H. Hughes collection

Description Level: Item

Series Number: 3-1997.1

Item Number: 3-1997.1.40

Accession Number: 3-1997

GMD: graphic

Date Range: c. 1940

Physical Description: 10" x 8" (b/w)

Physical Condition: good

Scope and Content:

Photograph shows the Red Indian (Gasoline) Station on the north side Princess Avenue between 9th and 10th Streets, Brandon. Attached to the west side of the gas station is another shop which contains Hutchings' Drug Store. The Alexandra Block on 10th Street is visible in the background.

Name Access: Hutchings Drugs
Red Indian Service Station
Princess Avenue

Subject Access: downtowns
street scenes
Brandon business buildings & facilities after 1940
building exteriors
garages
drug stores

Storage Location: RG 5 photograph storage drawer

Images





Wheat City Motors

<http://archives.brandonu.ca/en/permalink/descriptions12868>

Part Of: CKX fonds
Creator: CKX
Description Level: Item
Series Number: W
Item Number: 11-2010.W7b
Accession Number: 11-2010
GMD: graphic
Date Range: after 1954
Physical Description: 5" x 4" (b/w)
Material Details: Negative

Custodial History:

See fonds level of the CKX records for custodial history.

Scope and Content:

Image of the Wheat City Motors building.

Name Access: CKX
Wheat City Motors
Subject Access: automobile dealerships
cars
building exteriors
garages

Storage Location: CKX fonds - 2010 accessions

Images





Viriden Motors

<http://archives.brandonu.ca/en/permalink/descriptions12892>

Part Of: CKX fonds
Creator: CKX
Description Level: Item
Series Number: V
Item Number: 11-2010.V14c
Accession Number: 11-2010
GMD: graphic
Date Range: 196?
Physical Description: 2.5" x 2.5" (b/w)
Material Details: Negative

Custodial History:

See fonds level of the CKX records for custodial history.

Scope and Content:

Portrait of a Viriden Motors mechanic.

Name Access: CKX
Viriden Motors
Subject Access: garages
cars
service station employees
Portrait
employees
Storage Location: CKX fonds - 2010 accessions

Images

