

S. J. McKee Archives



Wheat City Motors

<http://archives.brandonu.ca/en/permalink/descriptions12868>

Part Of: CKX fonds
Creator: CKX
Description Level: Item
Series Number: W
Item Number: 11-2010.W7b
Accession Number: 11-2010
GMD: graphic
Date Range: after 1954
Physical Description: 5" x 4" (b/w)
Material Details: Negative
Custodial History:

See fonds level of the CKX records for custodial history.

Scope and Content:

Image of the Wheat City Motors building.

Name Access: CKX
Wheat City Motors
Subject Access: automobile dealerships
cars
building exteriors
garages

Storage Location: CKX fonds - 2010 accessions

Images





Viriden Motors

<http://archives.brandonu.ca/en/permalink/descriptions12892>

Part Of: CKX fonds
Creator: CKX
Description Level: Item
Series Number: V
Item Number: 11-2010.V14c
Accession Number: 11-2010
GMD: graphic
Date Range: 196?
Physical Description: 2.5" x 2.5" (b/w)
Material Details: Negative

Custodial History:

See fonds level of the CKX records for custodial history.

Scope and Content:

Portrait of a Viriden Motors mechanic.

Name Access: CKX
Viriden Motors

Subject Access: garages
cars
service station employees
Portrait
employees

Storage Location: CKX fonds - 2010 accessions

Images





Victoria Motors

<http://archives.brandonu.ca/en/permalink/descriptions12915>

Part Of: CKX fonds
Creator: CKX
Description Level: Item
Series Number: V
Item Number: 11-2010.V2c
Accession Number: 11-2010
GMD: graphic
Date Range: after 1954
Physical Description: 5" x 4" (b/w)
Material Details: Negative

Custodial History:

See fonds level of the CKX records for custodial history.

Scope and Content:

Image of the Wilton Motors building.

Name Access: CKX
Wilton Motors
Victoria Esso Service

Subject Access: businesses
building exteriors
cars
signs and signboards
automobile dealerships
garages

Storage Location: CKX fonds - 2010 accessions

Images





Shoal Lake merchants - H. McLean & Co.

<http://archives.brandonu.ca/en/permalink/descriptions13040>

Part Of: CKX fonds
Creator: CKX
Description Level: Item
Series Number: S
Item Number: 11-2010.S142c
Accession Number: 11-2010
GMD: graphic
Date Range: 196?
Physical Description: 2.5" x 2.5" (b/w)
Material Details: Negative

Custodial History:

See fonds level of the CKX records for custodial history.

Scope and Content:

Image of a mechanic working on a truck.

Name Access: CKX
H. McLean & Co.

Subject Access: mechanics
Trucks
garages
building interiors

Storage Location: CKX fonds - 2010 accessions

Images





Shoal Lake merchants - H. McLean & Co.

<http://archives.brandonu.ca/en/permalink/descriptions13041>

Part Of: CKX fonds
Creator: CKX
Description Level: Item
Series Number: S
Item Number: 11-2010.S142b
Accession Number: 11-2010
GMD: graphic
Date Range: 196?
Physical Description: 2.5" x 2.5" (b/w)
Material Details: Negative

Custodial History:

See fonds level of the CKX records for custodial history.

Scope and Content:

Image of H. McLean & Co. employees.

Name Access: CKX
H. McLean & Co.

Subject Access: employees
building interiors
garages
businesses

Storage Location: CKX fonds - 2010 accessions

Images





Shoal Lake merchants - H. McLean & Co.

<http://archives.brandonu.ca/en/permalink/descriptions13042>

Part Of: CKX fonds
Creator: CKX
Description Level: Item
Series Number: S
Item Number: 11-2010.S142a
Accession Number: 11-2010
GMD: graphic
Date Range: 196?
Physical Description: 2.5" x 2.5" (b/w)
Material Details: Negative

Custodial History:

See fonds level of the CKX records for custodial history.

Scope and Content:

Image of the H. McLean & Co. building.

Name Access: CKX
H. McLean & Co.
Subject Access: building exteriors
garages
businesses
cars
persons

Storage Location: CKX fonds - 2010 accessions

Images





Sunset Lumber

<http://archives.brandonu.ca/en/permalink/descriptions13157>

Part Of: CKX fonds
Creator: CKX
Description Level: Item
Series Number: S
Item Number: 11-2010.S85b
Accession Number: 11-2010
GMD: graphic
Date Range: after 1954
Physical Description: 5" x 4" (b/w)
Material Details: Negative

Custodial History:

See fonds level of the CKX records for custodial history.

Scope and Content:

Image of the interior of a large shed.

Name Access: CKX
Homecrest Farms
Subject Access: commerical buildings
businesses
building interiors
Trucks
garages

Storage Location: CKX fonds - 2010 accessions

Images





S&S Mercury Sales (Virden)

<http://archives.brandonu.ca/en/permalink/descriptions13233>

Part Of: CKX fonds
Creator: CKX
Description Level: Item
Series Number: S
Item Number: 11-2010.S36a
Accession Number: 11-2010
GMD: graphic
Date Range: September 1963
Physical Description: 2.5" x 2.5" (b/w)
Material Details: Negative

Custodial History:

See fonds level of the CKX records for custodial history.

Scope and Content:

Image of the S&S Mercury Sales building.

Name Access: CKX
S&S Mercury Sales

Subject Access: businesses
building exteriors
cars
automobile dealerships
signs and signboards
garages

Storage Location: CKX fonds - 2010 accessions

Images





Rutledge Garage (Neepawa)

<http://archives.brandonu.ca/en/permalink/descriptions13458>

Part Of: CKX fonds
Creator: CKX
Description Level: Item
Series Number: R
Item Number: 11-2010.R40b
Accession Number: 11-2010
GMD: graphic
Date Range: after 1954
Physical Description: 2.5" x 2.5" (b/w)
Material Details: Negative

Custodial History:

See fonds level of the CKX records for custodial history.

Scope and Content:

Image of the Rutledge Garage with two men and a car.

Name Access: CKX
Rutledge Garage

Subject Access: businesses
cars
building exteriors
persons
business and professional people
garages

Storage Location: CKX fonds - 2010 accessions

Images





Rutledge Garage (Neepawa)

<http://archives.brandonu.ca/en/permalink/descriptions13459>

Part Of: CKX fonds
Creator: CKX
Description Level: Item
Series Number: R
Item Number: 11-2010.R40a
Accession Number: 11-2010
GMD: graphic
Date Range: after 1954
Physical Description: 2.5" x 2.5" (b/w)
Material Details: Negative

Custodial History:

See fonds level of the CKX records for custodial history.

Scope and Content:

Image of the Rutledge Garage building.

Name Access: CKX
Rutledge Garage
Markle Sheet Metal

Subject Access: businesses
cars
building exteriors
garages
signs and signboards

Storage Location: CKX fonds - 2010 accessions

Images





Royalite tire service trucks

<http://archives.brandonu.ca/en/permalink/descriptions13532>

Part Of: CKX fonds
Creator: CKX
Description Level: Item
Series Number: R
Item Number: 11-2010.R4
Accession Number: 11-2010
GMD: graphic
Date Range: 1967
Physical Description: 1.5" x 1.5" (b/w)
Material Details: Negative

Custodial History:

See fonds level of the CKX records for custodial history.

Scope and Content:

Image of a Royalite building.

Name Access: CKX
Royalite

Subject Access: cars
garages
service stations
vehicles
signs and signboards

Storage Location: CKX fonds - 2010 accessions

Images





Royalite windfall \$1M winner

<http://archives.brandonu.ca/en/permalink/descriptions13533>

Part Of: CKX fonds
Creator: CKX
Description Level: Item
Series Number: R
Item Number: 11-2010.R3
Accession Number: 11-2010
GMD: graphic
Date Range: 1967
Physical Description: 1.5" x 1.5" (b/w)
Material Details: Negative

Custodial History:

See fonds level of the CKX records for custodial history.

Scope and Content:

Image of a Royalite contest winner.

Name Access: CKX
Royalite

Subject Access: persons
garages
service stations
business and professional people
contests

Storage Location: CKX fonds - 2010 accessions

Images





Royalite windfall \$1M winner

<http://archives.brandonu.ca/en/permalink/descriptions13534>

Part Of: CKX fonds
Creator: CKX
Description Level: Item
Series Number: R
Item Number: 11-2010.R3
Accession Number: 11-2010
GMD: graphic
Date Range: 1967
Physical Description: 1.5" x 1.5" (b/w)
Material Details: Negative

Custodial History:

See fonds level of the CKX records for custodial history.

Scope and Content:

Image of a Royalite contest winner.

Name Access: CKX
Royalite

Subject Access: persons
garages
service stations
business and professional people
contests

Storage Location: CKX fonds - 2010 accessions

Images



E.E. Lehigh Ltd.

<http://archives.brandonu.ca/en/permalink/descriptions13796>

Part Of: Fred McGuinness collection
Creator: Photograph: C.J. Smith
Description Level: Item
Series Number: McG 9
Item Number: 20-2009.105

Accession Number: 20-2009
GMD: graphic
Date Range: [1929-1931]
Physical Description: 9.5" x 7.5" (b/w)
Material Details: On matting

History /

Biographical:

The 1901 Canadian Census places the Lehigh family near Brockville, Ontario, where Everett E. Lehigh (b. 19 May 1881) was farming with his widowed father Solon (b. 20 Aug 1849) and younger sister, Edna (b. 08 Feb 1884). The findagrave.com genealogical website identifies a Mary Wickware as marrying Everett E. Lehigh in Altonquin, Ontario, on 04 April 1905.

E.E. Lehigh appears in the Henderson's Brandon City Directories in 1919. By 1923, he was Vice-President of Motors Ltd., which had its shop on 151-7th Street. By 1925, Lehigh had taken over the garage, renaming it Lehigh Motors, which became the sole agent for McLaughlin Motor Cars. By 1927, Lehigh Motors had opened a second branch on 12th Street and Princess Avenue, which was formerly the Brandon Auto Garage. Lehigh had become the exclusive dealer for McLaughlin-Buick, Pontiac, and Oldsmobile motor cars.

It appears Lehigh moved his business, E.E. Lehigh Ltd., to 799 Pacific Avenue by 1929. By then, Lehigh had a head office in Winnipeg at 640 Portage Avenue where he served as president and was the provincial distributor for Rugby trucks and Durant cars. Although E.E. Lehigh had a residence in Brandon (325 - 14th Street), Mr. S.G. Cunningham was listed as the Brandon representative for Lehigh Motors Ltd. in the Henderson Directories. By 1931, E.E. Lehigh Ltd. had moved once again, this time to 151-153 - 9th Street.

E.E. Lehigh disappears from the Henderson's Brandon City Directory by 1933 and a Mrs. E.E. Lehigh (possibly Mary (Wickware) Lehigh, d.21 July 1943) is listed under the 14th Street residence. The 9th Street garage address is divided between Munns Taxi (151-9th Street) and Wheat City Auto Wreckers (153-9th Street.)

Custodial History:

Photograph was in possession of Mrs. Ruby Miles, who passed the image on to Fred McGuinness. McGuinness makes reference to Mrs. Miles and this photograph in his Sunbeams column (Source: F.A. Rosser, "Another interesting chat with a daughter of the plains," Brandon Sun 18 Aug 1981).

Scope and Content:

Photograph shows a group portrait of 33 individuals standing and seated in front of the business E.E. Lehigh Ltd., Brandon. The storefront window has a sign that reads: Durant Motor Cars, E.E. Lehigh Ltd., Brandon. The door to the business has Lehigh Motors stencilled on the window. The men are wearing jackets and ties, and there are three women, possibly clerical staff, wearing 1920s era dresses. The elderly man seated in the centre of the photograph, wearing a long-sleeved white dress shirt might be Everett E. Lehigh.

Notes: Writing on the front of the photograph is embossed: C.J. Smith

Name Access: E.E. Lehigh

Subject Access: garages

Transportation

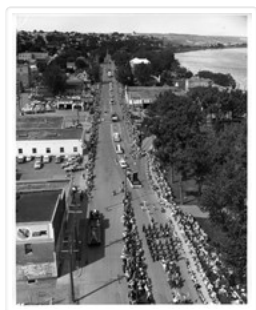
Brandon business buildings & facilities before 1940

store exteriors

Storage Location: McGuinness oversize storage drawer (1-2015)

Related Material: Ruby Miles collection 14-2003

[Images](#)



Medicine Hat Exhibition and Stampede - Parade Day 4

<http://archives.brandonu.ca/en/permalink/descriptions14145>

Part Of: Fred McGuinness collection
Creator: Photographer: Howard Heid, Medicine Hat News
Description Level: Item
Series Number: McG 9
Item Number: 1-2015.214
Accession Number: 1-2015
GMD: graphic
Date Range: 1962
Physical Description: 10" x 8" (b/w)

History /

Biographical:

The Medicine Hat Exhibition and Stampede Parade Day was held on Thursday, July 19, 1962, at 9:30 a.m. The local newspaper reported that approximately 24,000 people were in attendance to see parade marshal Rod Ashburner leading 175 entries consisting of 90 floats, 75 horses, and 10 bands. There were 19 parade categories eligible for \$12,000 in prize money and included: junior and senior cowboys and cowgirls; fancy and Shetland ponies; sulky class open; comic, commercial, industrial and organizational floats; decorated cars; special ranch class; 4-H Clubs; and a non-competitive class.

The parade route started at Second St. and Allowance Ave., from Second St. to Ash Ave., north on Ash to First St. SE., from First St. S.E. to Fourth Ave., south to Second St. to South Railway St., south on South Railway St. to Third St., with a finish at McLeod Trail. A route map was published in the Medicine Hat News the day before the parade.

Aerial photographs of the parade were taken by Medicine Hat News photographer Howard Heid (1930-2005) from the private helicopter of John Bourn. Bourn was a pilot from Woodville, Wisconsin, who chartered his four-seater helicopter for sight-seers at exhibitions and stampedes across the county.

(Sources: Pat Currie, "Let 'Er Go!," Medicine Hat News, 19 July 1962,1; Harald Gunderson, "'Eye in the Sky' Best Parade View," Medicine Hat News, 19 July 1962,1; "Parade Starts at 9:30 Sharp," 18 July 1962)

Scope and Content:

Photograph shows an aerial view of the Medicine Hat Exhibition and Stampede Parade route with a focus on the First Street SE. A number of gas stations and garages are visible along this route and include Texaco, Shell, Ford, and B/A. The Fraternal Order of Eagles lodge is also visible.

Notes: This photograph appeared on the front page of The Medicine Hat News (19 July 1962).

Name Access: Medicine Hat
South Saskatchewan River

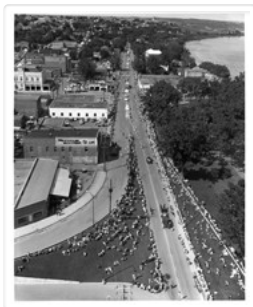
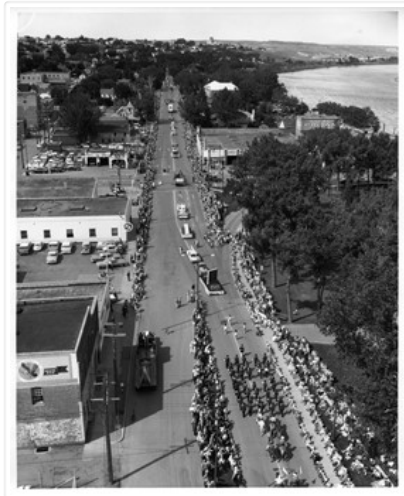
Subject Access: parades
floats
aerial photography
aerial views
street scenes
fraternal organizations
garages

Repro Restriction: Subject to Canadian Copyright Law

Storage Location: RG 5 photograph storage drawer 2 (hanging photos)

Arrangement:
BR #3 Family photos

Images



Medicine Hat Exhibition and Stampede - Parade Day 6

<http://archives.brandonu.ca/en/permalink/descriptions14147>

Part Of: Fred McGuinness collection

Creator: Photographer: Howard Heid, Medicine Hat News

Description Level: Item

Series Number: McG 9

Item Number: 1-2015.216

Accession Number: 1-2015

GMD: graphic

Date Range: 1962

Physical Description: 10" x 8" (b/w)

History /

Biographical:

The Medicine Hat Exhibition and Stampede Parade Day was held on Thursday, July 19, 1962, at 9:30 a.m. The local newspaper reported that approximately 24,000 people were in attendance to see parade marshal Rod Ashburner leading 175 entries consisting of 90 floats, 75 horses, and 10 bands. There were 19 parade categories eligible for \$12,000 in prize money and included: junior and senior cowboys and cowgirls; fancy and Shetland ponies; sulky class open; comic, commercial, industrial and organizational floats; decorated cars; special ranch class; 4-H Clubs; and a non-competitive class.

The parade route started at Second St. and Allowance Ave., from Second St. to Ash Ave., north on Ash to First St. SE., from First St. S.E. to Fourth Ave., south to Second St. to South Railway St., south on South Railway St. to Third St., with a finish at McLeod Trail. A route map was published in the Medicine Hat News the day before the parade.

Aerial photographs of the parade were taken by Medicine Hat News photographer Howard Heid (1930-2005) from the private helicopter of John Bourn. Bourn was a pilot from Woodville, Wisconsin, who chartered his four-seater helicopter for sight-seers at exhibitions and stampedes across the county.

(Sources: Pat Currie, "Let 'Er Go!," Medicine Hat News, 19 July 1962,1; Harald Gunderson, "'Eye in the Sky' Best Parade View," Medicine Hat News, 19 July 1962,1; "Parade Starts at 9:30 Sharp," 18 July 1962)

Scope and Content:

Photograph shows an aerial view of the Medicine Hat Exhibition and Stampede Parade route with a focus on the First Street SE and and the South Railway Street merge. A number of gas stations and garages are visible along this route and include Texaco, Shell, Ford, and B/A. The Fraternal Order of Eagles lodge is also visible.

Notes: This photograph shows the neighbourhood before rezoning and commercial development.

Name Access: Medicine Hat
South Saskatchewan River

Subject Access: parades
floats
aerial photography
aerial views
street scenes
gardens
fraternal organizations
garages

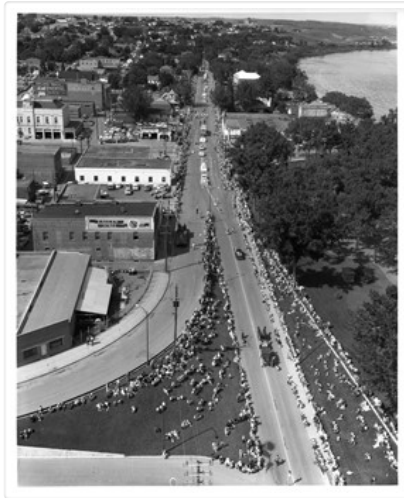
Repro Restriction: Subject to Canadian Copyright Law

Storage Location: RG 5 photograph storage drawer 2 (hanging photos)

Arrangement:

BR #3 Family photos

Images



Medicine Hat Exhibition and Stampede - Parade Day 7

<http://archives.brandonu.ca/en/permalink/descriptions14148>

Part Of: Fred McGuinness collection
Creator: Photographer: Howard Heid, Medicine Hat News
Description Level: Item
Series Number: McG 9
Item Number: 1-2015.217
Accession Number: 1-2015
GMD: graphic
Date Range: 1962
Physical Description: 10" x 8" (b/w)

History /

Biographical:

The Medicine Hat Exhibition and Stampede Parade Day was held on Thursday, July 19, 1962, at 9:30 a.m. The local newspaper reported that approximately 24,000 people were in attendance to see parade marshal Rod Ashburner leading 175 entries consisting of 90 floats, 75 horses, and 10 bands. There were 19 parade categories eligible for \$12,000 in prize money and included: junior and senior cowboys and cowgirls; fancy and Shetland ponies; sulky class open; comic, commercial, industrial and organizational floats; decorated cars; special ranch class; 4-H Clubs; and a non-competitive class.

The parade route started at Second St. and Allowance Ave., from Second St. to Ash Ave., north on Ash to First St. SE., from First St. S.E. to Fourth Ave., south to Second St. to South Railway St., south on South Railway St. to Third St., with a finish at McLeod Trail. A route map was published in the Medicine Hat News the day before the parade.

Aerial photographs of the parade were taken by Medicine Hat News photographer Howard Heid (1930-2005) from the private helicopter of John Bourn. Bourn was a pilot from Woodville, Wisconsin, who chartered his four-seater helicopter for sight-seers at exhibitions and stampedes across the county.

(Sources: Pat Currie, "Let 'Er Go!," Medicine Hat News, 19 July 1962,1; Harald Gunderson, "'Eye in the Sky' Best Parade View," Medicine Hat News, 19 July 1962,1; "Parade Starts at 9:30 Sharp," 18 July 1962)

Scope and Content:

Photograph shows an aerial view of the Medicine Hat Exhibition and Stampede Parade route with a focus on the First Street SE and Sixth Avenue intersection. A number of gas stations and garages are visible along this route and include Texaco, Shell, Ford, and B/A. A number of observers can be seen sitting on rooftops.

Notes: This photograph shows the neighbourhood before rezoning and commercial development.

Name Access: Medicine Hat
South Saskatchewan River

Subject Access: parades
floats
aerial photography
aerial views
street scenes
garages

Repro Restriction: Subject to Canadian Copyright Law

Storage Location: RG 5 photograph storage drawer 2 (hanging photos)

Arrangement:
BR #3 Family photos

Images



Medicine Hat Exhibition and Stampede - Parade Day 8

<http://archives.brandonu.ca/en/permalink/descriptions14149>

Part Of: Fred McGuinness collection
Creator: Photographer: Howard Heid, Medicine Hat News
Description Level: Item
Series Number: McG 9
Item Number: 1-2015.218
Accession Number: 1-2015

GMD: graphic
Date Range: 1962
Physical Description: 10" x 8" (b/w)

History /

Biographical:

The Medicine Hat Exhibition and Stampede Parade Day was held on Thursday, July 19, 1962, at 9:30 a.m. The local newspaper reported that approximately 24,000 people were in attendance to see parade marshal Rod Ashburner leading 175 entries consisting of 90 floats, 75 horses, and 10 bands. There were 19 parade categories eligible for \$12,000 in prize money and included: junior and senior cowboys and cowgirls; fancy and Shetland ponies; sulky class open; comic, commercial, industrial and organizational floats; decorated cars; special ranch class; 4-H Clubs; and a non-competitive class.

The parade route started at Second St. and Allowance Ave., from Second St. to Ash Ave., north on Ash to First St. SE., from First St. S.E. to Fourth Ave., south to Second St. to South Railway St., south on South Railway St. to Third St., with a finish at McLeod Trail. A route map was published in the Medicine Hat News the day before the parade.

Aerial photographs of the parade were taken by Medicine Hat News photographer Howard Heid (1930-2005) from the private helicopter of John Bourn. Bourn was a pilot from Woodville, Wisconsin, who chartered his four-seater helicopter for sight-seers at exhibitions and stampedes across the county.

(Sources: Pat Currie, "Let 'Er Go!," Medicine Hat News, 19 July 1962,1; Harald Gunderson, "'Eye in the Sky' Best Parade View," Medicine Hat News, 19 July 1962,1; "Parade Starts at 9:30 Sharp," 18 July 1962)

Scope and Content:

Photograph shows an aerial view of the Medicine Hat Exhibition and Stampede Parade route, with a focus on Second Street SE. Visible store signs include: Gardener's Used Cars, Provincial Treasury Branch, Furvey's Furniture and Appliances, J.J. Moore & Son Furniture, Alberta Credit Jewellers, James Richardson & Sons, Medicine Hat Gas Power Water City Owned Utilities.

Notes: This photograph shows the neighbourhood before rezoning and commercial development.

Name Access: Medicine Hat
South Saskatchewan River

Subject Access: parades
floats
aerial photography
aerial views
street scenes
garages

Repro Restriction: Subject to Canadian Copyright Law

Storage Location: RG 5 photograph storage drawer 2 (hanging photos)

Arrangement:

BR #3 Family photos

Images





Western Motors Ltd., Brandon, Manitoba

<http://archives.brandonu.ca/en/permalink/descriptions8411>

Part Of: Joseph H. Hughes collection

Description Level: Item

Series Number: 3-1997.1

Item Number: 3-1997.1.33

Accession Number: 3-1997

GMD: graphic

Date Range: c. 1950

Physical Description: 10" x 8" (b/w)

Physical Condition: good

Scope and Content:

Photograph shows Western Motors Ltd. on the southwest corner of 10th Street and Princess Avenue. Anglo gas station is part of the car shop, which sells GM, Chevrolet, and Oldsmobiles.

Hutchings' Drugs is on the ground floor of the Hughes Building on the northwest corner of 10th Street and Princess. Manufacturers Life occupies the second storey.

Name Access: Western Motors Ltd.

Hutchings Drugs

Hughes Building

10th Street

Princess Avenue

Subject Access: downtowns

street scenes

Brandon business buildings & facilities after 1940

building exteriors

car lots

drug stores

garages

Storage Location: RG 5 photograph storage drawer

Images





Prince Edward Hotel, Brandon, Manitoba

<http://archives.brandonu.ca/en/permalink/descriptions8412>

Part Of: Joseph H. Hughes collection

Description Level: Item

Series Number: 3-1997.1

Item Number: 3-1997.1.34

Accession Number: 3-1997

GMD: graphic

Date Range: c. 1965

Physical Description: 10" x 8" (b/w)

Physical Condition: good

Scope and Content:

Photograph shows the north face of the Prince Edward Hotel on Princess Avenue. To the east of the hotel is Old City Hall with the military monument (which has since been relocated to the Brandon Armoury). On the west side of the hotel is Wheelers Esso Service Station.

Notes: The photograph appears to be taken from the Hughes Building on 10th Street.

Name Access: Princess Avenue
City Hall
Prince Edward Hotel
Wheelers Esso Service

Subject Access: downtowns
street scenes
Brandon business buildings & facilities after 1940
building exteriors
hotels
garages
service stations
memorials

Storage Location: RG 5 photograph storage drawer

Images

