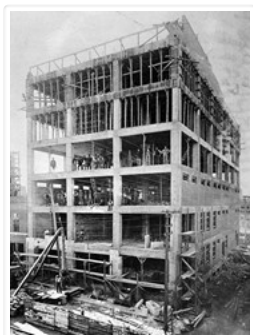


# S. J. McKee Archives



## A.E. McKenzie Building Under Construction

<http://archives.brandonu.ca/en/permalink/descriptions9764>

Part Of: RG 11 Lawrence Stuckey fonds

Description Level: Item

Series Number: 3.1

Item Number: 1-2002.3.1K2

Accession Number: 1-2002

GMD: graphic

Date Range: [1909 or 1910]

Physical Description: 3 1/2" x 5"

Material Details: Negative

Custodial History:

For custodial history see the collection level description of the Lawrence Stuckey collection.

Scope and Content:

A.E. McKenzie Building under construction

Notes: From the Brandon Sun.

Name Access: A.E. McKenzie Building

A.E. McKenzie & Co.

Subject Access: businesses

seeds

agricultural companies

Brandon Early Construction Scenes

Repro Restriction: The McKee Archives is the copyright holder for the Stuckey materials.

Location Copy: 1-2002.3.9.106

Storage Location: Lawrence Stuckey collection

## Images





## Construction of Parkview Apartments

<http://archives.brandonu.ca/en/permalink/descriptions9772>

Part Of: RG 11 Lawrence Stuckey fonds

Creator: Wm. Martel

Description Level: Item

Series Number: 3.1

Item Number: 1-2002.3.1K10

Accession Number: 1-2002

GMD: graphic

Date Range: 1915

Physical Description: 3 1/2" x 5"

Material Details: Negative

Custodial History:

For custodial history see the collection level description of the Lawrence Stuckey collection.

Scope and Content:

Construction of Parkview Apartments

Notes: Located at 14th St. and Princess Avenue

Contractor E.C. "Ted" Higgens

Courtesy of Mrs. Millen Dunbar nee May (Higgens) Dunbar

Name Access: Parkview Apartments

Subject Access: apartment buildings

construction

Brandon Early Construction Scenes

Repro Restriction: The McKee Archives is the copyright holder for the Stuckey materials.

Storage Location: Lawrence Stuckey collection

## Images

---





## Construction of St. Mary's Ukrainian Catholic Church

<http://archives.brandonu.ca/en/permalink/descriptions9773>

Part Of: RG 11 Lawrence Stuckey fonds

Creator: L.A. Stuckey

Description Level: Item

Series Number: 3.1

Item Number: 1-2002.3.1K11

Accession Number: 1-2002

GMD: graphic

Date Range: [between 1939 and 1941]

Physical Description: 2 1/2" x 2 1/2"

Material Details: Negative

History /

Biographical:

Construction began in 1939 and was completed in 1941.

Custodial History:

For custodial history see the collection level description of the Lawrence Stuckey collection.

Scope and Content:

Construction of St. Mary's Ukrainian Catholic Church

Notes: The small building is a shoe shop; sign by pole reads "Harry's Shoe Shop"

From the collection of Harry Pasklivich (the shoemaker)

Name Access: St. Mary's Ukrainian Catholic Church

Subject Access: shoe stores

Christianity

Church buildings

Brandon Churches

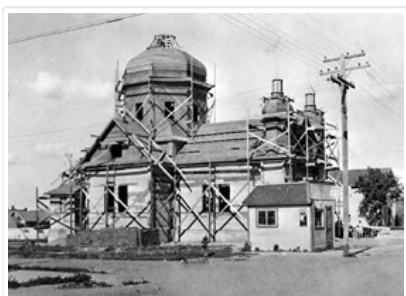
Brandon Early Construction Scenes

Repro Restriction: The McKee Archives is the copyright holder for the Stuckey materials.

Storage Location: Lawrence Stuckey collection

### Images

---



E.E. Lehigh Ltd.



<http://archives.brandonu.ca/en/permalink/descriptions13796>

Part Of: Fred McGuinness collection

Creator: Photograph: C.J. Smith

Description Level: Item

Series Number: McG 9

Item Number: 20-2009.105

Accession Number: 20-2009

GMD: graphic

Date Range: [1929-1931]

Physical Description: 9.5" x 7.5" (b/w)

Material Details: On matting

#### History /

#### Biographical:

The 1901 Canadian Census places the Lehigh family near Brockville, Ontario, where Everett E. Lehigh (b. 19 May 1881) was farming with his widowed father Solon (b. 20 Aug 1849) and younger sister, Edna (b. 08 Feb 1884). The findagrave.com genealogical website identifies a Mary Wickware as marrying Everett E. Lehigh in Altonquin, Ontario, on 04 April 1905.

E.E. Lehigh appears in the Henderson's Brandon City Directories in 1919. By 1923, he was Vice-President of Motors Ltd., which had its shop on 151-7th Street. By 1925, Lehigh had taken over the garage, renaming it Lehigh Motors, which became the sole agent for McLaughlin Motor Cars. By 1927, Lehigh Motors had opened a second branch on 12th Street and Princess Avenue, which was formerly the Brandon Auto Garage. Lehigh had become the exclusive dealer for McLaughlin-Buick, Pontiac, and Oldsmobile motor cars.

It appears Lehigh moved his business, E.E. Lehigh Ltd., to 799 Pacific Avenue by 1929. By then, Lehigh had a head office in Winnipeg at 640 Portage Avenue where he served as president and was the provincial distributor for Rugby trucks and Durant cars. Although E.E. Lehigh had a residence in Brandon (325 - 14th Street), Mr. S.G. Cunningham was listed as the Brandon representative for Lehigh Motors Ltd. in the Henderson Directories. By 1931, E.E. Lehigh Ltd. had moved once again, this time to 151-153 - 9th Street.

E.E. Lehigh disappears from the Henderson's Brandon City Directory by 1933 and a Mrs. E.E. Lehigh (possibly Mary (Wickware) Lehigh, d.21 July 1943) is listed under the 14th Street residence. The 9th Street garage address is divided between Munns Taxi (151-9th Street) and Wheat City Auto Wreckers (153-9th Street.)

#### Custodial History:

Photograph was in possession of Mrs. Ruby Miles, who passed the image on to Fred McGuinness. McGuinness makes reference to Mrs. Miles and this photograph in his Sunbeams column (Source: F.A. Rosser, "Another interesting chat with a daughter of the plains," Brandon Sun 18 Aug 1981).

#### Scope and Content:

Photograph shows a group portrait of 33 individuals standing and seated in front of the business E.E. Lehigh Ltd., Brandon. The storefront window has a sign that reads: Durant Motor Cars, E.E. Lehigh Ltd., Brandon. The door to the business has Lehigh Motors stencilled on the window. The men are wearing jackets and ties, and there are three women, possibly clerical staff, wearing 1920s era dresses. The elderly man seated in the centre of the photograph, wearing a long-sleeved white dress shirt might be Everett E. Lehigh.

Notes: Writing on the front of the photograph is embossed: C.J. Smith

Name Access: E.E. Lehigh

Subject Access:       garages  
                              Transportation  
                              Brandon business buildings & facilities before 1940  
                              store exteriors  
Storage Location:     McGuinness oversize storage drawer (1-2015)  
Related Material:     Ruby Miles collection 14-2003

## Images

---





## Greyhound Bus Depot, 11th Street and Princess Avenue, Brandon, Manitoba

<http://archives.brandonu.ca/en/permalink/descriptions8414>

Part Of: Joseph H. Hughes collection

Description Level: Item

Series Number: 3-1997.1

Item Number: 3-1997.1.36

Accession Number: 3-1997

GMD: graphic

Date Range: c.1955

Physical Description: 10" x 8" (b/w)

Physical Condition: good

Scope and Content:

Photograph shows the Greyhound Bus Depot at 11th Street and Princess Avenue. Western Motors, Wheelers Esso Station, and the Prince Edward Hotel are visible along the south side of Princess Avenue. Traffic is travelling one-way on Princess Avenue.

Name Access: Greyhound

Western Motors Ltd.

Esso

Prince Edward Hotel

Princess Avenue

11th Street

Subject Access: downtowns

street scenes

Brandon business buildings & facilities after 1940

building exteriors

hotels

garages

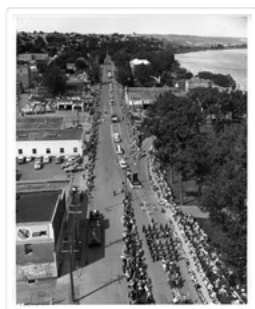
bus depots

Storage Location: RG 5 photograph storage drawer

### Images

---





## Medicine Hat Exhibition and Stampede - Parade Day 4

<http://archives.brandonu.ca/en/permalink/descriptions14145>

Part Of: Fred McGuinness collection  
Creator: Photographer: Howard Heid, Medicine Hat News  
Description Level: Item  
Series Number: McG 9  
Item Number: 1-2015.214  
Accession Number: 1-2015  
GMD: graphic  
Date Range: 1962  
Physical Description: 10" x 8" (b/w)

### History /

### Biographical:

The Medicine Hat Exhibition and Stampede Parade Day was held on Thursday, July 19, 1962, at 9:30 a.m. The local newspaper reported that approximately 24,000 people were in attendance to see parade marshal Rod Ashburner leading 175 entries consisting of 90 floats, 75 horses, and 10 bands. There were 19 parade categories eligible for \$12,000 in prize money and included: junior and senior cowboys and cowgirls; fancy and Shetland ponies; sulky class open; comic, commercial, industrial and organizational floats; decorated cars; special ranch class; 4-H Clubs; and a non-competitive class.

The parade route started at Second St. and Allowance Ave., from Second St. to Ash Ave., north on Ash to First St. SE., from First St. S.E. to Fourth Ave., south to Second St. to South Railway St., south on South Railway St. to Third St., with a finish at McLeod Trail. A route map was published in the Medicine Hat News the day before the parade.

Aerial photographs of the parade were taken by Medicine Hat News photographer Howard Heid (1930-2005) from the private helicopter of John Bourn. Bourn was a pilot from Woodville, Wisconsin, who chartered his four-seater helicopter for sight-seers at exhibitions and stampedes across the county.

(Sources: Pat Currie, "Let 'Er Go!," Medicine Hat News, 19 July 1962,1; Harald Gunderson, "'Eye in the Sky' Best Parade View," Medicine Hat News, 19 July 1962,1; "Parade Starts at 9:30 Sharp," 18 July 1962)

### Scope and Content:

Photograph shows an aerial view of the Medicine Hat Exhibition and Stampede Parade route with a focus on the First Street SE. A number of gas stations and garages are visible along this route and include Texaco, Shell, Ford, and B/A. The Fraternal Order of Eagles lodge is also visible.

Notes: This photograph appeared on the front page of The Medicine Hat News (19 July 1962).

Name Access: Medicine Hat  
South Saskatchewan River

Subject Access: parades  
floats  
aerial photography  
aerial views  
street scenes  
fraternal organizations  
garages

Repro Restriction: Subject to Canadian Copyright Law

Storage Location: RG 5 photograph storage drawer 2 (hanging photos)



Arrangement:

BR #3 Family photos

## Images

---



### Medicine Hat Exhibition and Stampede - Parade Day 6

<http://archives.brandonu.ca/en/permalink/descriptions14147>

Part Of:	Fred McGuinness collection
Creator:	Photographer: Howard Heid, Medicine Hat News
Description Level:	Item
Series Number:	McG 9
Item Number:	1-2015.216
Accession Number:	1-2015
GMD:	graphic
Date Range:	1962
Physical Description:	10" x 8" (b/w)

## History /

### Biographical:

The Medicine Hat Exhibition and Stampede Parade Day was held on Thursday, July 19, 1962, at 9:30 a.m. The local newspaper reported that approximately 24,000 people were in attendance to see parade marshal Rod Ashburner leading 175 entries consisting of 90 floats, 75 horses, and 10 bands. There were 19 parade categories eligible for \$12,000 in prize money and included: junior and senior cowboys and cowgirls; fancy and Shetland ponies; sulky class open; comic, commercial, industrial and organizational floats; decorated cars; special ranch class; 4-H Clubs; and a non-competitive class.

The parade route started at Second St. and Allowance Ave., from Second St. to Ash Ave., north on Ash to First St. SE., from First St. S.E. to Fourth Ave., south to Second St. to South Railway St., south on South Railway St. to Third St., with a finish at McLeod Trail. A route map was published in the Medicine Hat News the day before the parade.

Aerial photographs of the parade were taken by Medicine Hat News photographer Howard Heid (1930-2005) from the private helicopter of John Bourn. Bourn was a pilot from Woodville, Wisconsin, who chartered his four-seater helicopter for sight-seers at exhibitions and stampedes across the county.

(Sources: Pat Currie, "Let 'Er Go!," Medicine Hat News, 19 July 1962,1; Harald Gunderson, "'Eye in the Sky' Best Parade View," Medicine Hat News, 19 July 1962,1; "Parade Starts at 9:30 Sharp," 18 July 1962)

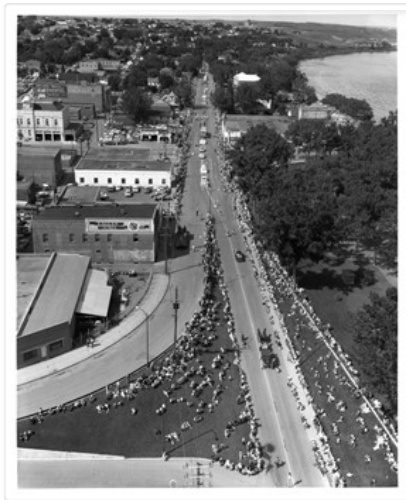
### Scope and Content:

Photograph shows an aerial view of the Medicine Hat Exhibition and Stampede Parade route with a focus on the First Street SE and and the South Railway Street merge. A number of gas stations and garages are visible along this route and include Texaco, Shell, Ford, and B/A. The Fraternal Order of Eagles lodge is also visible.

Notes:	This photograph shows the neighbourhood before rezoning and commercial development.
Name Access:	Medicine Hat South Saskatchewan River
Subject Access:	parades floats aerial photography aerial views street scenes gardens fraternal organizations garages
Repro Restriction:	Subject to Canadian Copyright Law
Storage Location:	RG 5 photograph storage drawer 2 (hanging photos)
Arrangement:	BR #3 Family photos

## Images

---



## Medicine Hat Exhibition and Stampede - Parade Day 7

<http://archives.brandonu.ca/en/permalink/descriptions14148>

Part Of: Fred McGuinness collection  
 Creator: Photographer: Howard Heid, Medicine Hat News  
 Description Level: Item  
 Series Number: McG 9  
 Item Number: 1-2015.217  
 Accession Number: 1-2015  
 GMD: graphic  
 Date Range: 1962  
 Physical Description: 10" x 8" (b/w)

History /

Biographical:

The Medicine Hat Exhibition and Stampede Parade Day was held on Thursday, July 19, 1962, at 9:30 a.m. The local newspaper reported that approximately 24,000 people were in attendance to see parade marshal Rod Ashburner leading 175 entries consisting of 90 floats, 75 horses, and 10 bands. There were 19 parade categories eligible for \$12,000 in prize money and included: junior and senior cowboys and cowgirls; fancy and Shetland ponies; sulky class open; comic, commercial, industrial and organizational floats; decorated cars; special ranch class; 4-H Clubs; and a non-competitive class.

The parade route started at Second St. and Allowance Ave., from Second St. to Ash Ave., north on Ash to First St. S.E., from First St. S.E. to Fourth Ave., south to Second St. to South Railway St., south on South Railway St. to Third St., with a finish at McLeod Trail. A route map was published in the Medicine Hat News the day before the parade.

Aerial photographs of the parade were taken by Medicine Hat News photographer Howard Heid (1930-2005) from the private helicopter of John Bourn. Bourn was a pilot from Woodville, Wisconsin, who chartered his four-seater helicopter for sight-seers at exhibitions and stampedes across the county.

(Sources: Pat Currie, "Let 'Er Go!," Medicine Hat News, 19 July 1962,1; Harald Gunderson, "'Eye in the Sky' Best Parade View," Medicine Hat News, 19 July 1962,1; "Parade Starts at 9:30 Sharp," 18 July 1962)

#### Scope and Content:

Photograph shows an aerial view of the Medicine Hat Exhibition and Stampede Parade route with a focus on the First Street SE and Sixth Avenue intersection. A number of gas stations and garages are visible along this route and include Texaco, Shell, Ford, and B/A. A number of observers can be seen sitting on rooftops.

Notes: This photograph shows the neighbourhood before rezoning and commercial development.

Name Access: Medicine Hat  
South Saskatchewan River

Subject Access: parades  
floats  
aerial photography  
aerial views  
street scenes  
garages

Repro Restriction: Subject to Canadian Copyright Law

Storage Location: RG 5 photograph storage drawer 2 (hanging photos)

Arrangement:  
BR #3 Family photos

#### Images

---



### Medicine Hat Exhibition and Stampede - Parade Day 8

<http://archives.brandonu.ca/en/permalink/descriptions14149>

Part Of: Fred McGuinness collection  
Creator: Photographer: Howard Heid, Medicine Hat News  
Description Level: Item  
Series Number: McG 9  
Item Number: 1-2015.218  
Accession Number: 1-2015

GMD: graphic  
Date Range: 1962  
Physical Description: 10" x 8" (b/w)  
History /  
Biographical:

The Medicine Hat Exhibition and Stampede Parade Day was held on Thursday, July 19, 1962, at 9:30 a.m. The local newspaper reported that approximately 24,000 people were in attendance to see parade marshal Rod Ashburner leading 175 entries consisting of 90 floats, 75 horses, and 10 bands. There were 19 parade categories eligible for \$12,000 in prize money and included: junior and senior cowboys and cowgirls; fancy and Shetland ponies; sulky class open; comic, commercial, industrial and organizational floats; decorated cars; special ranch class; 4-H Clubs; and a non-competitive class.

The parade route started at Second St. and Allowance Ave., from Second St. to Ash Ave., north on Ash to First St. SE., from First St. S.E. to Fourth Ave., south to Second St. to South Railway St., south on South Railway St. to Third St., with a finish at McLeod Trail. A route map was published in the Medicine Hat News the day before the parade.

Aerial photographs of the parade were taken by Medicine Hat News photographer Howard Heid (1930-2005) from the private helicopter of John Bourn. Bourn was a pilot from Woodville, Wisconsin, who chartered his four-seater helicopter for sight-seers at exhibitions and stampedes across the county.

(Sources: Pat Currie, "Let 'Er Go!," Medicine Hat News, 19 July 1962,1; Harald Gunderson, "'Eye in the Sky' Best Parade View," Medicine Hat News, 19 July 1962,1; "Parade Starts at 9:30 Sharp," 18 July 1962)

Scope and Content:

Photograph shows an aerial view of the Medicine Hat Exhibition and Stampede Parade route, with a focus on Second Street SE. Visible store signs include: Gardener's Used Cars, Provincial Treasury Branch, Furvey's Furniture and Appliances, J.J. Moore & Son Furniture, Alberta Credit Jewellers, James Richardson & Sons, Medicine Hat Gas Power Water City Owned Utilities.

Notes: This photograph shows the neighbourhood before rezoning and commercial development.

Name Access: Medicine Hat  
South Saskatchewan River

Subject Access: parades  
floats  
aerial photography  
aerial views  
street scenes  
garages

Repro Restriction: Subject to Canadian Copyright Law

Storage Location: RG 5 photograph storage drawer 2 (hanging photos)

Arrangement:  
BR #3 Family photos

## Images

---





## Methodist Church Under Construction

<http://archives.brandonu.ca/en/permalink/descriptions9763>

Part Of: RG 11 Lawrence Stuckey fonds

Description Level: Item

Series Number: 3.1

Item Number: 1-2002.3.1K1

Accession Number: 1-2002

GMD: graphic

Date Range: [ca. 1905]

Physical Description: 3 1/2" x 5"

Material Details: Negative

Custodial History:

For custodial history see the collection level description of the Lawrence Stuckey collection.

Scope and Content:

Methodist Church under construction

Notes: Laying cornerstone

From the Brandon Sun.

Name Access: Methodist Church

Subject Access: Christianity

Church buildings

Brandon Churches

Brandon Early Construction Scenes

Repro Restriction: The McKee Archives is the copyright holder for the Stuckey materials.

Storage Location: Lawrence Stuckey collection

### Images

---





## Nation & Shewan Building Renovation

<http://archives.brandonu.ca/en/permalink/descriptions9771>

Part Of: RG 11 Lawrence Stuckey fonds

Creator: Wm. Martel

Description Level: Item

Series Number: 3.1

Item Number: 1-2002.3.1K9

Accession Number: 1-2002

GMD: graphic

Date Range: 1920

Physical Description: 3 1/2" x 5"

Material Details: Negative

History /

Biographical:

Renovations included the addition of one storey to the main building (built in 1889).

Custodial History:

For custodial history see the collection level description of the Lawrence Stuckey collection.

Scope and Content:

Reconstruction of Nation & Shewan building by E.C. "Ted" Higgins

Notes: In car: driver - E.C. Higgins, left - Jack Matthews, behind driver - Jim Mutter, top - John Baron

Courtesy of May (Higgins) Dunbar.

Name Access: Nation & Shewan Building

Subject Access: downtowns

businesses

merchants

Brandon Early Construction Scenes

Repro Restriction: The McKee Archives is the copyright holder for the Stuckey materials.

Storage Location: Lawrence Stuckey collection

## Images

---







## Paving Ninth Street

<http://archives.brandonu.ca/en/permalink/descriptions9766>

Part Of: RG 11 Lawrence Stuckey fonds

Description Level: Item

Series Number: 3.1

Item Number: 1-2002.3.1K4

Accession Number: 1-2002

GMD: graphic

Date Range: September 1911

Physical Description: 3 1/2" x 5"

Material Details: Negative

Custodial History:

For custodial history see the collection level description of the Lawrence Stuckey collection.

Scope and Content:

Paving 9th Street north of Rosser Avenue.

Notes: Paving includes 5 1/2" concrete foundation

Photo shows King George Cafe, A.E. McKenzie Building, Clement Block and Prince Edward Hotel under construction

Name Access: King George Cafe

A.E. McKenzie Building

Prince Edward Hotel

Subject Access: construction

paving

hotels

cafes

agricultural buildings

Brandon Early Construction Scenes

Repro Restriction: The McKee Archives is the copyright holder for the Stuckey materials.

Location Copy: 1-2002.3.9.107

Storage Location: Lawrence Stuckey collection

## Images

---





## Prince Edward Hotel, Brandon, Manitoba

<http://archives.brandonu.ca/en/permalink/descriptions8412>

Part Of: Joseph H. Hughes collection

Description Level: Item

Series Number: 3-1997.1

Item Number: 3-1997.1.34

Accession Number: 3-1997

GMD: graphic

Date Range: c. 1965

Physical Description: 10" x 8" (b/w)

Physical Condition: good

### Scope and Content:

Photograph shows the north face of the Prince Edward Hotel on Princess Avenue. To the east of the hotel is Old City Hall with the military monument (which has since been relocated to the Brandon Armoury). On the west side of the hotel is Wheelers Esso Service Station.

Notes: The photograph appears to be taken from the Hughes Building on 10th Street.

Name Access: Princess Avenue  
City Hall  
Prince Edward Hotel  
Wheelers Esso Service

Subject Access: downtowns  
street scenes  
Brandon business buildings & facilities after 1940  
building exteriors  
hotels  
garages  
service stations  
memorials

Storage Location: RG 5 photograph storage drawer

### Images

---





## Princess Avenue facing east from 10th Street, Brandon, Manitoba

<http://archives.brandonu.ca/en/permalink/descriptions8413>

Part Of: Joseph H. Hughes collection

Description Level: Item

Series Number: 3-1997.1

Item Number: 3-1997.1.35

Accession Number: 3-1997

GMD: graphic

Date Range: c. 1965

Physical Description: 10" x 8" (b/w)

Physical Condition: good

### Scope and Content:

Photograph shows Princess Avenue facing east from 10th Street. On the north side of Princess Avenue, a B/A Service Station, Princess Cafe, Lindenberg Seeds, and the Central Fire Station are visible. Old City Hall with the war memorial and the Prince Edward Hotel are visible on the south side of Princess Avenue. Traffic is travelling one-way on Princess Avenue.

Name Access: Princess Avenue  
City Hall  
Prince Edward Hotel  
B/A Service Station  
Princess Cafe  
Lindenberg Seeds  
Central Fire Station

Subject Access: downtowns  
street scenes  
Brandon business buildings & facilities after 1940  
building exteriors  
hotels  
garages  
service stations  
cafes  
memorials

Storage Location: RG 5 photograph storage drawer

## Images

---





## Red Indian Station (Gasoline) north side Princess Avenue between 9th Street and 10th Street, Brandon, Manitoba

<http://archives.brandonu.ca/en/permalink/descriptions8418>

Part Of: Joseph H. Hughes collection

Description Level: Item

Series Number: 3-1997.1

Item Number: 3-1997.1.40

Accession Number: 3-1997

GMD: graphic

Date Range: c. 1940

Physical Description: 10" x 8" (b/w)

Physical Condition: good

Scope and Content:

Photograph shows the Red Indian (Gasoline) Station on the north side Princess Avenue between 9th and 10th Streets, Brandon. Attached to the west side of the gas station is another shop which contains Hutchings' Drug Store. The Alexandra Block on 10th Street is visible in the background.

Name Access: Hutchings Drugs

Red Indian Service Station

Princess Avenue

Subject Access: downtowns

street scenes

Brandon business buildings & facilities after 1940

building exteriors

garages

drug stores

Storage Location: RG 5 photograph storage drawer

### Images

---





## Royalite tire service trucks

<http://archives.brandonu.ca/en/permalink/descriptions13532>

Part Of: CKX fonds  
Creator: CKX  
Description Level: Item  
Series Number: R  
Item Number: 11-2010.R4  
Accession Number: 11-2010  
GMD: graphic  
Date Range: 1967  
Physical Description: 1.5" x 1.5" (b/w)  
Material Details: Negative

### Custodial History:

See fonds level of the CKX records for custodial history.

### Scope and Content:

Image of a Royalite building.

Name Access: CKX  
Royalite  
Subject Access: cars  
garages  
service stations  
vehicles  
signs and signboards

Storage Location: CKX fonds - 2010 accessions

## Images

---





## Royalite windfall \$1M winner

<http://archives.brandonu.ca/en/permalink/descriptions13533>

Part Of: CKX fonds  
Creator: CKX  
Description Level: Item  
Series Number: R  
Item Number: 11-2010.R3  
Accession Number: 11-2010  
GMD: graphic  
Date Range: 1967  
Physical Description: 1.5" x 1.5" (b/w)  
Material Details: Negative

### Custodial History:

See fonds level of the CKX records for custodial history.

### Scope and Content:

Image of a Royalite contest winner.

Name Access: CKX  
Royalite  
Subject Access: persons  
garages  
service stations  
business and professional people  
contests  
Storage Location: CKX fonds - 2010 accessions

## Images

---





## Royalite windfall \$1M winner

<http://archives.brandonu.ca/en/permalink/descriptions13534>

Part Of: CKX fonds  
Creator: CKX  
Description Level: Item  
Series Number: R  
Item Number: 11-2010.R3  
Accession Number: 11-2010  
GMD: graphic  
Date Range: 1967  
Physical Description: 1.5" x 1.5" (b/w)  
Material Details: Negative

### Custodial History:

See fonds level of the CKX records for custodial history.

### Scope and Content:

Image of a Royalite contest winner.

Name Access: CKX  
Royalite  
Subject Access: persons  
garages  
service stations  
business and professional people  
contests  
Storage Location: CKX fonds - 2010 accessions

## Images

---





## Rutledge Garage (Neepawa)

<http://archives.brandonu.ca/en/permalink/descriptions13458>

Part Of: CKX fonds  
Creator: CKX  
Description Level: Item  
Series Number: R  
Item Number: 11-2010.R40b  
Accession Number: 11-2010  
GMD: graphic  
Date Range: after 1954  
Physical Description: 2.5" x 2.5" (b/w)  
Material Details: Negative

### Custodial History:

See fonds level of the CKX records for custodial history.

### Scope and Content:

Image of the Rutledge Garage with two men and a car.

Name Access: CKX  
Rutledge Garage  
Subject Access: businesses  
cars  
building exteriors  
persons  
business and professional people  
garages  
Storage Location: CKX fonds - 2010 accessions

## Images

---







## Rutledge Garage (Neepawa)

<http://archives.brandonu.ca/en/permalink/descriptions13459>

Part Of: CKX fonds  
Creator: CKX  
Description Level: Item  
Series Number: R  
Item Number: 11-2010.R40a  
Accession Number: 11-2010  
GMD: graphic  
Date Range: after 1954  
Physical Description: 2.5" x 2.5" (b/w)  
Material Details: Negative

### Custodial History:

See fonds level of the CKX records for custodial history.

### Scope and Content:

Image of the Rutledge Garage building.

Name Access: CKX  
Rutledge Garage  
Markle Sheet Metal  
Subject Access: businesses  
cars  
building exteriors  
garages  
signs and signboards  
Storage Location: CKX fonds - 2010 accessions

## Images

---

