

S. J. McKee Archives



Station IDs - Canada/US border

<http://archives.brandonu.ca/en/permalink/descriptions13018>

Part Of: CKX fonds
Creator: CKX
Description Level: Item
Series Number: S
Item Number: 11-2010.S151b
Accession Number: 11-2010
GMD: graphic
Date Range: July 1, 1965
Physical Description: 2.5" x 2.5" (b/w)
Material Details: Negative
Custodial History:

See fonds level of the CKX records for custodial history.

Scope and Content:

Image of the American and Canadian flags and a cairn.

Name Access: CKX
Subject Access: cars
cairns
building exteriors
flags

Storage Location: CKX fonds - 2010 accessions

Images





Station IDs - Canada/US border

<http://archives.brandonu.ca/en/permalink/descriptions13019>

Part Of: CKX fonds
Creator: CKX
Description Level: Item
Series Number: S
Item Number: 11-2010.S151a
Accession Number: 11-2010
GMD: graphic
Date Range: July 1, 1965
Physical Description: 2.5" x 2.5" (b/w)
Material Details: Negative

Custodial History:

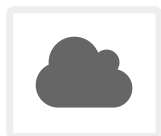
See fonds level of the CKX records for custodial history.

Scope and Content:

Image of a road leading to the US/Canada border.

Name Access: CKX
Subject Access: cars
 cairns
 building exteriors
 flags
Storage Location: CKX fonds - 2010 accessions

Images



Gerry Beaubier collection

<http://archives.brandonu.ca/en/permalink/descriptions13541>

Part Of: RG 5 Western Manitoba Manuscript Collection
Description Level: Collection
Accession Number: 11-2013
GMD: electronic records

Date Range: 1916-1917
Physical Description: 35 digital photographs
Material Details: JPEGs

History /

Biographical:

Gerry Beaubier was born in Wainwright, Alberta to Beatty and Babe Beaubier. He completed his high school in Saskatoon, before receiving a BSc in Geography from Brandon University.

Before attending university Gerry served in the army as a special reserve, while working as a night clerk at the Bessborough Hotel in Saskatoon. His post-graduate career consisted primarily of work for Canada Agriculture, under the PFRA Branch (Prairie Farm Rehabilitation Administration). Later he would work as an Executive Manager, helping develop forage and range management programs for several post secondary schools, including, Assiniboine Community College, as well as schools in Red Deer, Lethbridge, and Saskatoon.

Gerry Beaubier married Joyce Abercrombie, of Saskatoon. Together they had two sons: Neil and Dean. Neil, an Account Advisor for the Royal Bank, was born in Regina, and currently works in Swift Current. Dean was born in Swift Current, received his PhD in Education and currently lives in Forrest working at Elton Collegiate.

The Beaubiers, who were originally from Ireland, emigrated to the Canadian West, making Gerry part of the fourth generation of his family to call the region home. His great-grandfather, along with his grandfather and great uncle were amongst the first one hundred settlers in Brandon. Together they first built the Beaubier House, a boarding house for early settlers and travellers. After it burnt down they began construction on the Beaubier Hotel, which stood at the corner of 8th Street and Princess Avenue in Brandon until August 17th, 2008. His grandfather, David Wilson Beaubier, continued to build and operate hotels throughout the prairies, including the Empire Hotels (of Brandon and Saskatoon) and The Park (Moose Jaw).

David Wilson Beaubier served as a secretary of the Orange Lodge of Manitoba. As an Orange Lodge Colonel, he worked with other Orange Lodge members, to recruit throughout the prairies for the purpose of World War One. For his efforts, David was promoted to Lieutenant Colonel, and later Captain of the 99th Manitoba Rangers. David's sons (Gerry's father, at University of Manitoba, and uncle at McGill), were both working towards undergraduate degrees when war broke out in 1914, and each would leave school to join their father at Camp Hughes.

Custodial History:

Gerry Beaubier collected these photos primarily in the years 2000-2011, largely from family and friends who knew of his interest in the topic. They were donated to the S.J. McKee Archives in 2011.

Scope and Content:

Collection consists of digital photographs of those who trained for battle in World War I at Camp Hughes and in Brandon, Manitoba. It also includes a digital copy of the cover of the Nominal Roll of Officers, Non-Commissioned Officers and Men, who departed from Brandon in 1917.

The photos, taken primarily at Camp Hughes, are of a number of battalions, including the 34th, 100th, 108th, 181st and 214th. The photo, PT in England, is a postcard sent home from Beatty Beaubier. The Massey Harris building seen on the right side of, WW1 B parade0001, was used to house troops throughout the war. The man standing alone at the front of the parade in, 181 Parade, is David Wilson Beaubier.

Notes: Information for the biographical and custodial histories was provided by Gerry Beaubier on September 25, 2013. Description by Dustin Lane (October 2013).

Name Access:

- Gerald Beaubier
- Gerry Beaubier
- Beaubier family
- Camp Hughes
- Brandon, MB
- Lieut. D. Slemin
- Capt. C. Smith
- Capt. J. Strong
- Capt. Ridgeway
- Lieut. W. Smith
- Lieut. T. Williams
- Lieut. H. Craig
- Capt. S.R. Wallace
- Lieut. D.H. Beaubier
- David Wilson Beaubier
- Capt. E.L. Abbott
- Major E.R.C. Wilcox
- Major N.F. McCahey
- Lt.-Col. Sutherland
- Lt.-Col. Foster
- Major Lawless
- Major Collier
- Capt. J.D. Young
- Capt. A.E. Vanderpump
- Capt. J.E. West
- Capt. Munro
- Lieut. Watson
- Lieut. Johnstone
- Lieut. McIntosh
- Lieut. Cherry
- Lieut. Bryan
- Lieut. J.L. Evans
- Lieut. J. Kavanaugh
- Lieut. I. Vipond
- Capt. Rutherford
- Lieut. Cluff
- Capt. Maples
- Lieut. Lane
- Lieut. E.C. Whitehead
- Lieut. R. Carleton
- Lieut. B.F. Beaubier
- Fincher
- Lieut. Beaver
- Lieut. McCool
- Lieut. A.P. Milk

	Lieut. Joseph Hardy
	Lieut. K. Spencer
	Lieut. J. Faulkner
	Lieut. F. Keall
	181st Battalion
	181st Brandon Overseas Battalion Band
	A. Gov. Lines 108th
	No. 13 Platoon 108th Battalion
	184th Battalion
	34th Fort Garry
	100th Battalion
	214th Battalion
	108th Signallers
	Stretcher Bearer Section 108th
	Machine Gun Section 108th Battalion
Subject Access:	181st Brandon Overseas Battalion armed forces
	military personnel
	barracks
	public ceremonies
	downtown
	historic sites
	railroads
	military services
	parades
	regional parks
	passenger trains
	Veterans
	railway stations
	train stations
	restaurants
	food services
	war
	World War I
	World War One
	First World War
	The Great War
Storage Location:	T: drive/shared 02/web photos

Brandon College Platoon

<http://archives.brandonu.ca/en/permalink/descriptions14257>

Part Of:	Joseph H. Hughes collection
Creator:	Photographer: Davidson Studio



Description Level: Item
Series Number: 3-1997.1
Item Number: 3-1997.1.66
Accession Number: 3-1997
Other Numbers: Hughes #81
GMD: graphic
Date Range: 1916
Physical Description: 13.5" x 10.5" (b/w)
Material Details: on matting
Physical Condition: Photograph beginning to separate from matting
History /
Biographical:

Brandon College established a Canadian Officer Training Corps (COTC) program in 1916 and had enough students for a platoon that would join the 196th Western Universities Battalion's B Company. COTC logs for in the SJ McKee Archives show that at least 40 men regularly attended classes on campus during the 1916 winter term.

The Brandon Daily Sun published the names of 60 potential platoon recruits before they headed to Camp Hughes to train in the summer of 1916. Although Lt. J.R.C. Evans spearheaded the training of the COTC enlistees at Brandon College, he was found medically unfit for overseas service. In his stead, the son of the college's founder, Lt. William Carey McKee, lead the platoon to Camp Hughes where they joined the 196th Battalion. Of the 60 recruits identified in the local paper, 20 would not survive the war, including Lt. McKee. [ST/2016]

Scope and Content:

Photograph shows a group of 40 men wearing WWI uniforms. The men have the Canada general service cap badge on their headdress. The officer in the centre of the group (i.e., the man with the cane) is J.R.C. Evans. The group of men are likely members of the first Brandon College Platoon, which joined the 196th Western Universities Battalion.

Name Access: J.R.C. Evans
Subject Access: portraits
First World War
Great War
Storage Location: Hughes oversize drawer
Related Material: Daly House Museum
The Clark Hall Scrapbook

Images





Student using a Microscope

<http://archives.brandonu.ca/en/permalink/descriptions1558>

Part Of: Brandon University Photograph Collection
Description Level: Item
Series Number: 5
File Number: 5.4.23
Item Number: 5.4.23
Date Range: c. 1979
Physical Description: b/w, 8" x 10"
Scope and Content:

A female student looks through a microscope in a lab



Student using Lab Equipment

<http://archives.brandonu.ca/en/permalink/descriptions1559>

Part Of: Brandon University Photograph Collection
Description Level: Item
Series Number: 5
File Number: 5.4.24
Item Number: 5.4.24
Date Range: October, 1981
Physical Description: b/w, 8" x 10"
Scope and Content:

A female student uses equipment in a science lab



Man using Electron Microscope

<http://archives.brandonu.ca/en/permalink/descriptions1561>

Part Of: Brandon University Photograph Collection
Description Level: Item
Series Number: 5
File Number: 5.4.26
Item Number: 5.4.26
Date Range: c. 1974
Physical Description: b/w, 8" x 10"
Scope and Content:

A man looks through an electron microscope (?) in a lab



Brandon Correctional Institute

<http://archives.brandonu.ca/en/permalink/descriptions9290>

Part Of: RG 11 Lawrence Stuckey fonds

Creator: L.A. Stuckey

Description Level: Item

Series Number: 3.1

Item Number: 1-2002.3.1D4(1)

Accession Number: 1-2002

GMD: graphic

Date Range: February 7, 1980

Physical Description: 2 1/2" x 2 1/2"

Material Details: Negative

History /

Biographical:

Originally built as a courthouse and jail in 1884, the building's use as a courthouse ended with the construction of a new courthouse on 11th Street and Princess Avenue in 1908. It continued to be used as a provincial jail until December 1979.

Custodial History:

For custodial history see the collection level description of the Lawrence Stuckey collection.

Scope and Content:

Old Provincial Jail

Notes: Additional historical information provided by Fred McGuinness collection (20-2009).

Name Access: Old Brandon Provincial Jail

Subject Access: public buildings

courthouse

jails

gaols

Brandon Public Buildings

Repro Restriction: The McKee Archives is the copyright holder for the Stuckey materials.

Storage Location: Lawrence Stuckey collection

Arrangement:

[Mr. Stuckey put 2 negatives in the same envelope. We have separated them and numbered them D4(1) and D4(2).]

Images



Brandon Correctional Institute

<http://archives.brandonu.ca/en/permalink/descriptions9291>

Part Of: RG 11 Lawrence Stuckey fonds

Creator: L.A. Stuckey

Description Level: Item

Series Number: 3.1

Item Number: 1-2002.3.1D4(2)

Accession Number: 1-2002

GMD: graphic

Date Range: February 26, 1980

Physical Description: 2 1/2" x 2 1/2"

Material Details: Negative

History /

Biographical:

Originally built as a courthouse and jail in 1884, the building's use as a courthouse ended with the construction of a new courthouse on 11th Street and Princess Avenue in 1908. It continued to be used as a provincial jail until December 1979.

Custodial History:

For custodial history see the collection level description of the Lawrence Stuckey collection.

Scope and Content:

Old Provincial Jail.

Name Access: Old Brandon Provincial Jail

Subject Access: public buildings

courthouse

jails

gaols

Brandon Public Buildings

Repro Restriction: The McKee Archives is the copyright holder for the Stuckey materials.

Storage Location: Lawrence Stuckey collection

Arrangement:

[Mr. Stuckey put 2 negatives in the same envelope. We have separated them and numbered them D4(1) and D4(2).]

Images



MPE B 8 Speeches & Addresses

<http://archives.brandonu.ca/en/permalink/descriptions9299>

Part Of: RG 4 Manitoba Pool Elevator fonds

Description Level: Sub-series

Series Number: MPE B.8

GMD: textual records

Date Range: 1930-1979

Physical Description: 33 cm

History /

Biographical:

Speeches and addresses given by executives of the Manitoba Wheat Pool and MPE as well as agricultural experts and supporters of the co-operative movement helped to spread and solidify support for the Pools. They also served to educate rural members on a variety of topics. See fonds level description of RG 4 for complete history/bio of MPE.

Scope and Content:

Sub-series MPE B.8 consists of speeches made by various important members and executives of Manitoba Pool Elevators. Records include the following:

- 1a. Addresses 1930 -1946
- 1b. Addresses 1946 -1954
2. Addresses 1954 -1960
3. Addresses 1969 -1975
- 4a. Addresses 1972 -1979
- 4b. Addresses 1972 -1979
- 5a. F.W. Hamilton Speeches 1967 -1973
- 5b. F.W. Hamilton Speeches 1962 -1966
- 5c. F.W. Hamilton Speeches 1960 -1962
- 5d. F.W. Hamilton Speeches 1949 -1960
- 6a. W.J. Parker Speeches 1945
- 6b. W.J. Parker Speeches 1940 -1944
- 7a. W.J. Parker Speeches 1948 -1950
- 7b. W.J. Parker Speeches 1946 -1948
- 8a. W.J. Parker Speeches 1954 -1958
- 8b. W.J. Parker Speeches 1951 -1954
- 9a. W.J. Parker Speeches 1968 -1970
- 9b. W.J. Parker Speeches 1960 -1967
10. F.W. Ransom Addresses 1942 - 1948
11. Miscellaneous Addresses 1948 - 1955; no dates
12. Miscellaneous Addresses 1960; no dates
13. E.S. Russenholt Addresses
14. V. Martens " The Implications of Including Protein in Segregating Canadian Wheat"

Notes: Description by Jillian Sutherland (2009-10)

Name Access: F.W. Hamilton
W.J. Parker
F.W. Ransom
D.W. Richmond
Manitoba Pool Elevators
Central Office
F.F. Hamilton
Vincent Poloway
Graham Spry
J.K. Friesen
E. S. Russenholt
V. Martens

Subject Access: Co-operative movement
Speeches
Addresses
Board of Grain Commissioners for Canada

Storage Location: RG 4 Manitoba Pool Elevator fonds
Series B: Central Office records



Offices of Mayor Daly & Dominion Land Titles

<http://archives.brandonu.ca/en/permalink/descriptions9493>

Part Of: RG 11 Lawrence Stuckey fonds

Description Level: Item

Series Number: 3.1

Item Number: 1-2002.3.1E20

Accession Number: 1-2002

GMD: graphic

Date Range: August 1882

Physical Description: 3 1/2" x 5"

Material Details: Negative

Custodial History:

For custodial history see the collection level description of the Lawrence Stuckey collection.

Scope and Content:

Offices of Mayor T.M. Daly & Dominion Land Titles

Notes: From Brandon Sun

Name Access: Offices of Mayor Daly & Dominion Land Titles

Subject Access: businesses

mayors

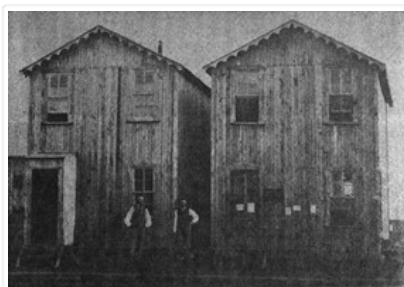
land titles

Brandon business buildings & facilities before 1940

Repro Restriction: The McKee Archives is the copyright holder for the Stuckey materials.

Storage Location: Lawrence Stuckey collection

Images



Construction of Great Northern (BS&HB) Railway Bridge at Bunclody - Grade

<http://archives.brandonu.ca/en/permalink/descriptions9977>

Part Of: RG 11 Lawrence Stuckey fonds

Description Level: Item

Series Number: 3.1

Item Number: 1-2002.3.1PE1

Accession Number: 1-2002
GMD: graphic
Date Range: [1905 or 1906]
Physical Description: 3 1/2" x 5"
Material Details: Negative

History /

Biographical:

According to Stuckey and Bain (1996), "The Brandon, Saskatchewan & Hudson's Bay Railway was built and operated as a totally owned subsidiary of the Great Northern Railway. Construction commenced in late 1905 and by the end of 1905, less than a mile of track had been laid north of the boundary at St. John. In 1906, the remaining 68.6 miles to Brandon were laid and service commenced that year. During the Depression of the 1930s, traffic declined significantly and the entire branch was abandoned in 1936. Over much of the branch's length, the ties and rails were laid on the prairie without ballast and today little remains of the line apart from traces where there were cuts and bridges." (p. 18)

Stuckey, L. A., & Bain, D. M. (1996). The Great Northern and Northern Pacific railways in Canada. Calgary, Alberta: British Railway Modellers of North America.

Custodial History:

For custodial history see the collection level description of the Lawrence Stuckey collection.

Scope and Content:

View of the Great Northern (BS&HB) Railway building a grade [to their bridge] at Bunclody, Manitoba.

Notes: [This railway bridge crossed the Souris River. P.E.]
From the collection of Gilford Copeland of Bunclody, Manitoba
Copy negative LAS.

Name Access: Construction of Great Northern (BS&HB) Railway
Brandon, Saskatchewan & Hudson's Bay Railway
Great Northern Railway

Subject Access: railroads
railways
manmade geographic features
construction
construction of bridges
bridges
Great Northern Railway from Church's Ferry ND to Brandon MB

Repro Restriction: The McKee Archives is the copyright holder for the Stuckey materials.

Storage Location: Lawrence Stuckey collection

Images





Construction of Great Northern (BS&HB) Railway Bridge at Buncloody - Grading Station

<http://archives.brandonu.ca/en/permalink/descriptions9978>

Part Of: RG 11 Lawrence Stuckey fonds

Description Level: Item

Series Number: 3.1

Item Number: 1-2002.3.1PE2

Accession Number: 1-2002

GMD: graphic

Date Range: [1905 or 1906]

Physical Description: 3 1/2" x 5"

Material Details: Negative

History /

Biographical:

According to Stuckey and Bain (1996), "The Brandon, Saskatchewan & Hudson's Bay Railway was built and operated as a totally owned subsidiary of the Great Northern Railway.

Construction commenced in late 1905 and by the end of 1905, less than a mile of track had been laid north of the boundary at St. John. In 1906, the remaining 68.6 miles to Brandon were laid and service commenced that year. During the Depression of the 1930s, traffic declined significantly and the entire branch was abandoned in 1936. Over much of the branch's length, the ties and rails were laid on the prairie without ballast and today little remains of the line apart from traces where there were cuts and bridges." (p. 18)

Stuckey, L. A., & Bain, D. M. (1996). The Great Northern and Northern Pacific railways in Canada. Calgary, Alberta: British Railway Modellers of North America.

Custodial History:

For custodial history see the collection level description of the Lawrence Stuckey collection.

Scope and Content:

View of the Great Northern (BS&HB) Railway building a grade [to their bridge] at Buncloody, Manitoba.

Notes: Grading station site

From the collection of Gilford Copeland of Buncloody, Manitoba

Copy negative LAS.

Name Access: Construction of Great Northern (BS&HB) Railway
Brandon, Saskatchewan & Hudson's Bay Railway
Great Northern Railway

Subject Access: railroads
railways
manmade geographic features
construction
construction of bridges
bridges

Great Northern Railway from Church's Ferry ND to Brandon MB

Repro Restriction: The McKee Archives is the copyright holder for the Stuckey materials.

Storage Location: Lawrence Stuckey collection

Images



Great Northern Railway Steam Shovel & Cars

<http://archives.brandonu.ca/en/permalink/descriptions9979>

Part Of: RG 11 Lawrence Stuckey fonds

Description Level: Item

Series Number: 3.1

Item Number: 1-2002.3.1PE3

Accession Number: 1-2002

GMD: graphic

Date Range: [1905 or 1906]

Physical Description: 3 1/2" x 5"

Material Details: Negative

History /

Biographical:

According to Stuckey and Bain (1996), "The Brandon, Saskatchewan & Hudson's Bay Railway was built and operated as a totally owned subsidiary of the Great Northern Railway.

Construction commenced in late 1905 and by the end of 1905, less than a mile of track had been laid north of the boundary at St. John. In 1906, the remaining 68.6 miles to Brandon were laid and service commenced that year. During the Depression of the 1930s, traffic declined significantly and the entire branch was abandoned in 1936. Over much of the branch's length, the ties and rails were laid on the prairie without ballast and today little remains of the line apart from traces where there were cuts and bridges." (p. 18)

Stuckey, L. A., & Bain, D. M. (1996). The Great Northern and Northern Pacific railways in Canada. Calgary, Alberta: British Railway Modellers of North America.

Custodial History:

For custodial history see the collection level description of the Lawrence Stuckey collection.

Scope and Content:

Great Northern Railway steam shovel & earth cars.

Notes: Used in the construction of the Brandon, Saskatchewan and Hudson's Bay Railway at Bunclody, Manitoba
Great Northern Railway photo
From the collection of Gilford Copeland of Bunclody, Manitoba
Copy negative LAS.

Name Access: Construction of Great Northern (BS&HB) Railway
Brandon, Saskatchewan & Hudson's Bay Railway
Great Northern Railway

Subject Access: steam shovels
railroads
railways
manmade geographic features
construction of bridges
bridges
Great Northern Railway from Church's Ferry ND to Brandon MB

Repro Restriction: The McKee Archives is the copyright holder for the Stuckey materials.

Storage Location: Lawrence Stuckey collection

Images



Great Northern Railway crane on Souris River bridge

<http://archives.brandonu.ca/en/permalink/descriptions9980>

Part Of: RG 11 Lawrence Stuckey fonds

Creator: Great Northern Railway

Description Level: Item

Series Number: 3.1

Item Number: 1-2002.3.1PE4

Accession Number: 1-2002

GMD: graphic

Date Range: [between 1905 and 1936]

Physical Description: 3 1/2" x 5"

Material Details: Negative

History /

Biographical:

According to Stuckey and Bain (1996), "The Brandon, Saskatchewan & Hudson's Bay Railway was built and operated as a totally owned subsidiary of the Great Northern Railway. Construction commenced in late 1905 and by the end of 1905, less than a mile of track had been laid north of the boundary at St. John. In 1906, the remaining 68.6 miles to Brandon were laid and service commenced that year. During the Depression of the 1930s, traffic declined significantly and the entire branch was abandoned in 1936. Over much of the branch's length, the ties and rails were laid on the prairie without ballast and today little remains of the line apart from traces where there were cuts and bridges." (p. 18)

Stuckey, L. A., & Bain, D. M. (1996). The Great Northern and Northern Pacific railways in Canada. Calgary, Alberta: British Railway Modellers of North America.

Custodial History:

For custodial history see the collection level description of the Lawrence Stuckey collection.

Scope and Content:

Great Northern Railway crane on Souris River bridge, Bunclody, Manitoba.

Notes:

[Mr. Stuckey is unsure if this photo was taken during construction of the bridge, or whether it may have been taken during its dismantling when the railway line closed. P.E.]

From the collection of Gilford Copeland of Bunclody, Manitoba

Copy negative LAS.

Name Access:

Construction of Great Northern (BS&HB) Railway
Brandon, Saskatchewan & Hudson's Bay Railway
Great Northern Railway

Subject Access:

cranes
railroads
railways
manmade geographic features
construction of bridges
bridges
Great Northern Railway from Church's Ferry ND to Brandon MB

Repro Restriction:

The McKee Archives is the copyright holder for the Stuckey materials.

Storage Location:

Lawrence Stuckey collection

Images



Great Northern Railway Steam Shovel Loading Cars



<http://archives.brandonu.ca/en/permalink/descriptions9981>

Part Of: RG 11 Lawrence Stuckey fonds

Description Level: Item

Series Number: 3.1

Item Number: 1-2002.3.1PE5

Accession Number: 1-2002

GMD: graphic

Date Range: [1905 or 1906]

Physical Description: 3 1/2" x 5"

Material Details: Negative

History /

Biographical:

According to Stuckey and Bain (1996), "The Brandon, Saskatchewan & Hudson's Bay Railway was built and operated as a totally owned subsidiary of the Great Northern Railway. Construction commenced in late 1905 and by the end of 1905, less than a mile of track had been laid north of the boundary at St. John. In 1906, the remaining 68.6 miles to Brandon were laid and service commenced that year. During the Depression of the 1930s, traffic declined significantly and the entire branch was abandoned in 1936. Over much of the branch's length, the ties and rails were laid on the prairie without ballast and today little remains of the line apart from traces where there were cuts and bridges." (p. 18)

Stuckey, L. A., & Bain, D. M. (1996). The Great Northern and Northern Pacific railways in Canada. Calgary, Alberta: British Railway Modellers of North America.

Custodial History:

For custodial history see the collection level description of the Lawrence Stuckey collection.

Scope and Content:

Great Northern Railway steam shovel loading cars near Bunclody, Manitoba.

Notes: Used in the construction of the Brandon, Saskatchewan and Hudson's Bay Railway at Bunclody, Manitoba

From the collection of Gilford Copeland of Bunclody, Manitoba

[Combined] copy negative LAS.

Name Access: Construction of Great Northern (BS&HB) Railway
Brandon, Saskatchewan & Hudson's Bay Railway
Great Northern Railway

Subject Access: steam shovels
railroads
railways
manmade geographic features
construction of bridges
bridges

Great Northern Railway from Church's Ferry ND to Brandon MB

Repro Restriction: The McKee Archives is the copyright holder for the Stuckey materials.

Storage Location: Lawrence Stuckey collection

Images



Great Northern (BS&HB) Railway Construction Camp near Bunclody

<http://archives.brandonu.ca/en/permalink/descriptions9982>

Part Of: RG 11 Lawrence Stuckey fonds

Description Level: Item

Series Number: 3.1

Item Number: 1-2002.3.1PE6

Accession Number: 1-2002

GMD: graphic

Date Range: [1905 or 1906]

Physical Description: 3 1/2" x 5"

Material Details: Negative

History /

Biographical:

According to Stuckey and Bain (1996), "The Brandon, Saskatchewan & Hudson's Bay Railway was built and operated as a totally owned subsidiary of the Great Northern Railway. Construction commenced in late 1905 and by the end of 1905, less than a mile of track had been laid north of the boundary at St. John. In 1906, the remaining 68.6 miles to Brandon were laid and service commenced that year. During the Depression of the 1930s, traffic declined significantly and the entire branch was abandoned in 1936. Over much of the branch's length, the ties and rails were laid on the prairie without ballast and today little remains of the line apart from traces where there were cuts and bridges." (p. 18)

Stuckey, L. A., & Bain, D. M. (1996). The Great Northern and Northern Pacific railways in Canada. Calgary, Alberta: British Railway Modellers of North America.

Custodial History:

For custodial history see the collection level description of the Lawrence Stuckey collection.

Scope and Content:

Great Northern (Brandon, Saskatchewan and Hudson's Bay) Railway construction camp near Bunclody, Manitoba.

Notes: From the collection of Gilford Copeland of Bunclody, Manitoba
[Combined] copy negative LAS.

Name Access: Construction of Great Northern (BS&HB) Railway
Brandon, Saskatchewan & Hudson's Bay Railway
Great Northern Railway

Subject Access: railroads
 railways
 manmade geographic features
 construction of bridges
 Great Northern Railway from Church's Ferry ND to Brandon MB
Repro Restriction: The McKee Archives is the copyright holder for the Stuckey materials.
Storage Location: Lawrence Stuckey collection

Images



Great Northern Railway Steam Shovel

<http://archives.brandonu.ca/en/permalink/descriptions9983>

Part Of: RG 11 Lawrence Stuckey fonds
Description Level: Item
Series Number: 3.1
Item Number: 1-2002.3.1PE7
Accession Number: 1-2002
GMD: graphic
Date Range: [1905 or 1906]
Physical Description: 3 1/2" x 5"
Material Details: Negative

History /

Biographical:

According to Stuckey and Bain (1996), "The Brandon, Saskatchewan & Hudson's Bay Railway was built and operated as a totally owned subsidiary of the Great Northern Railway. Construction commenced in late 1905 and by the end of 1905, less than a mile of track had been laid north of the boundary at St. John. In 1906, the remaining 68.6 miles to Brandon were laid and service commenced that year. During the Depression of the 1930s, traffic declined significantly and the entire branch was abandoned in 1936. Over much of the branch's length, the ties and rails were laid on the prairie without ballast and today little remains of the line apart from traces where there were cuts and bridges." (p. 18)

Stuckey, L. A., & Bain, D. M. (1996). The Great Northern and Northern Pacific railways in Canada. Calgary, Alberta: British Railway Modellers of North America.

Custodial History:

For custodial history see the collection level description of the Lawrence Stuckey collection.

Scope and Content:

Great Northern Railway steam shovel.

Notes: Used in the construction of the Brandon, Saskatchewan and Hudson's Bay Railway at Bunclody, Manitoba
Great Northern Railway photo
From the collection of Gilford Copeland of Bunclody, Manitoba
Copy negative LAS.

Name Access: Construction of Great Northern (BS&HB) Railway
Brandon, Saskatchewan & Hudson's Bay Railway
Great Northern Railway

Subject Access: steam shovels
railroads
railways
manmade geographic features
construction of bridges
Great Northern Railway from Church's Ferry ND to Brandon MB

Repro Restriction: The McKee Archives is the copyright holder for the Stuckey materials.

Storage Location: Lawrence Stuckey collection

Images



Great Northern (BS&HB) Railway Trestle East of Bunclody

<http://archives.brandonu.ca/en/permalink/descriptions9984>

Part Of: RG 11 Lawrence Stuckey fonds

Description Level: Item

Series Number: 3.1

Item Number: 1-2002.3.1PE8

Accession Number: 1-2002

GMD: graphic

Date Range: [1905 or 1906]

Physical Description: 3 1/2" x 5"

Material Details: Negative

History /

Biographical:

According to Stuckey and Bain (1996), "The Brandon, Saskatchewan & Hudson's Bay Railway was built and operated as a totally owned subsidiary of the Great Northern Railway. Construction commenced in late 1905 and by the end of 1905, less than a mile of track had been laid north of the boundary at St. John. In 1906, the remaining 68.6 miles to Brandon were laid and service commenced that year. During the Depression of the 1930s, traffic declined significantly and the entire branch was abandoned in 1936. Over much of the branch's length, the ties and rails were laid on the prairie without ballast and today little remains of the line apart from traces where there were cuts and bridges." (p. 18)

Stuckey, L. A., & Bain, D. M. (1996). The Great Northern and Northern Pacific railways in Canada. Calgary, Alberta: British Railway Modellers of North America.

Custodial History:

For custodial history see the collection level description of the Lawrence Stuckey collection.

Scope and Content:

View of a Great Northern (BS&HB) Railway trestle east of Bunclody, Manitoba.

Notes:	Under construction [Note small train dumping earthen fill. P.E.] From the collection of Gilford Copeland of Bunclody, Manitoba Copy negative LAS.
Name Access:	Construction of Great Northern (BS&HB) Railway Brandon, Saskatchewan & Hudson's Bay Railway Great Northern Railway
Subject Access:	railroads railways manmade geographic features construction construction of bridges bridges Great Northern Railway from Church's Ferry ND to Brandon MB
Repro Restriction:	The McKee Archives is the copyright holder for the Stuckey materials.
Storage Location:	Lawrence Stuckey collection

Images



Great Northern (BS&HB) Railway overpass east of Bunclody



station

<http://archives.brandonu.ca/en/permalink/descriptions9985>

Part Of: RG 11 Lawrence Stuckey fonds
Creator: Copy negative LAS
Description Level: Item
Series Number: 3.1
Item Number: 1-2002.3.1PE9(1)
Accession Number: 1-2002
GMD: graphic
Date Range: [193-?]
Physical Description: 3 1/2" x 5"
Material Details: Negative

History /

Biographical:

According to Stuckey and Bain (1996), "The Brandon, Saskatchewan & Hudson's Bay Railway was built and operated as a totally owned subsidiary of the Great Northern Railway. Construction commenced in late 1905 and by the end of 1905, less than a mile of track had been laid north of the boundary at St. John. In 1906, the remaining 68.6 miles to Brandon were laid and service commenced that year. During the Depression of the 1930s, traffic declined significantly and the entire branch was abandoned in 1936. Over much of the branch's length, the ties and rails were laid on the prairie without ballast and today little remains of the line apart from traces where there were cuts and bridges." (p. 18)

Stuckey, L. A., & Bain, D. M. (1996). The Great Northern and Northern Pacific railways in Canada. Calgary, Alberta: British Railway Modellers of North America.

Custodial History:

For custodial history see the collection level description of the Lawrence Stuckey collection.

Scope and Content:

Great Northern (BS&HB) Railway overpass east of station, Buncloody, Manitoba.

Notes: From the collection of Gilford Copeland of Buncloody, Manitoba.

Name Access: Brandon, Saskatchewan & Hudson's Bay Railway
Great Northern Railway

Subject Access: railroads
railways
manmade geographic features
bridges
Great Northern Railway from Church's Ferry ND to Brandon MB

Repro Restriction: The McKee Archives is the copyright holder for the Stuckey materials.

Storage Location: Lawrence Stuckey collection

Arrangement:

[Mr. Stuckey taped a print to this envelope. We have separated them, numbering the negative PE9(1) and the print PE9(2).]

Images

