

# S. J. McKee Archives

---



## Arborg Pool with exposed leg

<http://archives.brandonu.ca/en/permalink/descriptions14609>

Part Of: John Everitt collection

Description Level: Item

Item Number: JCE-0010

GMD: graphic

Date Range: September 1983

Material Details: Kodachrome slide

History /

Biographical:

Bulk grain is transported to the top of the grain elevator through the use of an endless cup conveyor, also known as the leg. Once at the top of the structure the grain can then flow down via a network of ducts into the various bins and pieces of equipment. Source of

History/Biography:

[https://www.gov.mb.ca/chc/hrb/internal\\_reports/pdfs/Grain\\_Elevators\\_arch...](https://www.gov.mb.ca/chc/hrb/internal_reports/pdfs/Grain_Elevators_arch...)

Custodial History:

Slide was in the possession of John Everitt before its donation to the SJ McKee Archives in 2007.

Scope and Content:

Item is an image of the Manitoba Pool Elevator at Arborg, MB. The elevator has an exposed leg.

Notes:

History/Bio information taken from the Government of Manitoba's "A history of grain elevators in Manitoba"

Repro Restriction:

The SJ McKee Archives is the copyright holder for the John Everitt collection and as such is providing access to the John Everitt slide collection for educational and research purposes only. To publish, copy or otherwise use these images, written permission must be obtained from the SJ McKee Archives. Any issues arising from the use of an item is the responsibility of the persons desiring to use the item, as is the securing of any necessary permissions for use.

Arrangement:

Original order. Box 1 - Section Man Pool 1

## Images

---





## Glenboro Pool

<http://archives.brandonu.ca/en/permalink/descriptions14610>

Part Of: John Everitt collection

Description Level: Item

Item Number: JCE-0001

GMD: graphic

Date Range: October 1985

Material Details: Kodachrome slide

History /

Biographical:

This elevator at Glenboro was constructed by Manitoba Pool Elevators between 1984 and 1985 along the CPR. The elevator closed c. 2002 and was demolished in 2009.

Custodial History:

Slide was in the possession of John Everitt before its donation to the SJ McKee Archives in 2007.

Scope and Content:

Item is an image of the Manitoba Pool Elevator at Glenboro, MB.

Notes:

History/Bio information:

<http://www.mhs.mb.ca/docs/sites/glenboroelevator.shtml>

Repro Restriction:

The SJ McKee Archives is the copyright holder for the John Everitt collection and as such is providing access to the John Everitt slide collection for educational and research purposes only. To publish, copy or otherwise use these images, written permission must be obtained from the SJ McKee Archives. Any issues arising from the use of an item is the responsibility of the persons desiring to use the item, as is the securing of any necessary permissions for use.

Arrangement:

Original order. Box 1 - Section Man Pool 1

### Images

---





## Killarney Pool

<http://archives.brandonu.ca/en/permalink/descriptions14611>

Part Of: John Everitt collection

Description Level: Item

Item Number: JCE-0002

GMD: graphic

Date Range: May 1984

Material Details: Kodachrome slide

History /

Biographical:

Pool B is a composite grain elevator built along the CPR by Manitoba Pool Elevators in 1960. It was renovated in the 1980s and demolished after 2007. The wooden UGG elevator, built in 1953, was demolished in September 2017.

Custodial History:

Slide was in the possession of John Everitt before its donation to the SJ McKee Archives in 2007.

Scope and Content:

Item is an image of the Manitoba Pool Elevator Pool B at Killarney, MB. A portion of the United Grain Growers elevator is visible in the foreground.

Notes: History/bio information:  
<http://www.mhs.mb.ca/docs/sites/killarneyelevator.shtml>

Repro Restriction: The SJ McKee Archives is the copyright holder for the John Everitt collection and as such is providing access to the John Everitt slide collection for educational and research purposes only. To publish, copy or otherwise use these images, written permission must be obtained from the SJ McKee Archives. Any issues arising from the use of an item is the responsibility of the persons desiring to use the item, as is the securing of any necessary permissions for use.

Arrangement:

Original order. Box 1 - Section Man Pool 1

## Images

---





## New Pool at #1 and #10

<http://archives.brandonu.ca/en/permalink/descriptions14615>

Part Of: John Everitt collection

Description Level: Item

Item Number: JCE-0005

GMD: graphic

Date Range: November 1983

Material Details: Kodachrome slide

History /

Biographical:

Operated as Pool A, this wooden grain elevator was built by Manitoba Pool Elevators between 1983 and 1984. It was closed by 2007 and demolished by 2008.

Custodial History:

Slide was in the possession of John Everitt before its donation to the SJ McKee Archives in 2007.

Scope and Content:

Item is an image of the new Manitoba Pool Elevator at Brandon, MB, under construction. The elevator was located at highways #1 and #10.

Notes: History/bio information:  
<http://www.mhs.mb.ca/docs/sites/brandonelevator2.shtml>

Repro Restriction: The SJ McKee Archives is the copyright holder for the John Everitt collection and as such is providing access to the John Everitt slide collection for educational and research purposes only. To publish, copy or otherwise use these images, written permission must be obtained from the SJ McKee Archives. Any issues arising from the use of an item is the responsibility of the persons desiring to use the item, as is the securing of any necessary permissions for use.

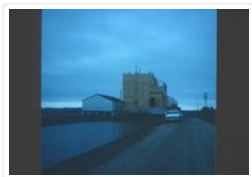
Arrangement:

Original order. Box 1 - Section Man Pool 1

## Images

---





## New Pool Elevator near Portage la Prairie

<http://archives.brandonu.ca/en/permalink/descriptions14616>

Part Of: John Everitt collection

Description Level: Item

Item Number: JCE-0004

GMD: graphic

Date Range: April 1984

Material Details: Kodachrome slide

History /

Biographical:

Constructed by Manitoba Pool Elevators between 1983 and 1984, the Burnside Siding Elevator was closed and demolished in 2008.

Custodial History:

Slide was in the possession of John Everitt before its donation to the SJ McKee Archives in 2007.

Scope and Content:

Item is an image of the new Manitoba Pool Elevator at Burnside Siding in the RM of Portage la Prairie under construction.

Notes: History/bio

information:<http://www.mhs.mb.ca/docs/sites/burnsideelevator.shtml>

Repro Restriction:

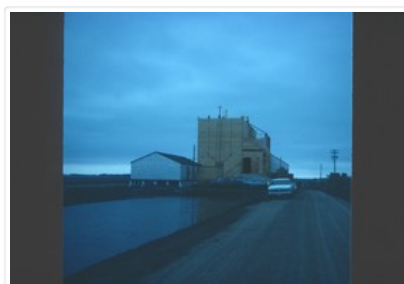
The SJ McKee Archives is the copyright holder for the John Everitt collection and as such is providing access to the John Everitt slide collection for educational and research purposes only. To publish, copy or otherwise use these images, written permission must be obtained from the SJ McKee Archives. Any issues arising from the use of an item is the responsibility of the persons desiring to use the item, as is the securing of any necessary permissions for use.

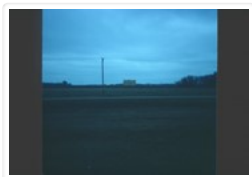
Arrangement:

Original order. Box 1 - Section Man Pool 1

### Images

---





## New Pool from #1

<http://archives.brandonu.ca/en/permalink/descriptions14617>

Part Of: John Everitt collection

Description Level: Item

Item Number: JCE-0011

GMD: graphic

Date Range: April 1984

Material Details: Kodachrome slide

History /

Biographical:

Operated as Pool A, this wooden grain elevator was built by Manitoba Pool Elevators between 1983 and 1984. It was closed by 2007 and demolished by 2008.

Custodial History:

Slide was in the possession of John Everitt before its donation to the SJ McKee Archives in 2007.

Scope and Content:

Item is an image of the new Manitoba Pool Elevator at Brandon, MB as seen from #1 highway.

Notes: History/bio

information:<http://www.mhs.mb.ca/docs/sites/brandonelevator2.shtml>

Repro Restriction:

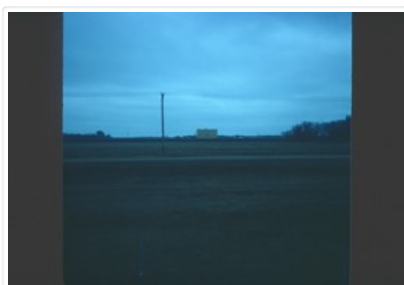
The SJ McKee Archives is the copyright holder for the John Everitt collection and as such is providing access to the John Everitt slide collection for educational and research purposes only. To publish, copy or otherwise use these images, written permission must be obtained from the SJ McKee Archives. Any issues arising from the use of an item is the responsibility of the persons desiring to use the item, as is the securing of any necessary permissions for use.

Arrangement:

Original order. Box 1 - Section Man Pool 1

## Images

---





## Snowflake Fed/Pool

<http://archives.brandonu.ca/en/permalink/descriptions14620>

Part Of: John Everitt collection

Description Level: Item

Item Number: JCE-0008

GMD: graphic

Date Range: August 1994

Material Details: plastic case

History /

Biographical:

The elevator in the image is the Federal Elevator, constructed in 1962 from wood and equipment reclaimed from Federal Elevators in Fallison and Windygates that had been torn down. It became the new Snowflake Pool B Elevator (Manitoba Pool Elevators) in 1972 when the original Pool B Elevator was sold to a local farmer. The Pool B elevator ceased commercial operations in 1981.

Custodial History:

Slide was in the possession of John Everitt before its donation to the SJ McKee Archives in 2007.

Scope and Content:

Item is an image of the elevator at Snowflake, MB.

Notes: History/bio information: "Portrait of a Grain Elevator: Snowflake, MB" in Canadiana - artist: Christopher Walker, researcher: Ed Ledohowski, editor: George Sayer Bain.

Repro Restriction: The SJ McKee Archives is the copyright holder for the John Everitt collection and as such is providing access to the John Everitt slide collection for educational and research purposes only. To publish, copy or otherwise use these images, written permission must be obtained from the SJ McKee Archives. Any issues arising from the use of an item is the responsibility of the persons desiring to use the item, as is the securing of any necessary permissions for use.

Arrangement:

Original order. Box 1 - Section Man Pool 1

## Images

---







## Snowflake Pool/Federal

<http://archives.brandonu.ca/en/permalink/descriptions14621>

Part Of: John Everitt collection

Description Level: Item

Item Number: JCE-0009

GMD: graphic

Date Range: August 1994

Material Details: plastic case

History /

Biographical:

Both elevators ceased commercial operations in 1981.

Custodial History:

Slide was in the possession of John Everitt before its donation to the SJ McKee Archives in 2007.

Scope and Content:

Item is an image of old Pool A and the new Pool B elevators at Snowflake, MB.

Notes: History/bio information: "Portrait of a Grain Elevator: Snowflake, MB" in Canadiana - artist: Christopher Walker, researcher: Ed Ledohowski, editor: George Sayer Bain.

Repro Restriction: The SJ McKee Archives is the copyright holder for the John Everitt collection and as such is providing access to the John Everitt slide collection for educational and research purposes only. To publish, copy or otherwise use these images, written permission must be obtained from the SJ McKee Archives. Any issues arising from the use of an item is the responsibility of the persons desiring to use the item, as is the securing of any necessary permissions for use.

Arrangement:

Original order. Box 1 - Section Man Pool 1

### Images

---

