

S. J. McKee Archives



Aerial view of 10th Street facing south from Princess Avenue

<http://archives.brandonu.ca/en/permalink/descriptions8420>

Part Of: Joseph H. Hughes collection
Creator: Photographer: Jerrett Photo
Description Level: Item
Series Number: 3-1997.1
Item Number: 3-1997.1.42
Accession Number: 3-1997
GMD: graphic
Date Range: c.1940
Physical Description: 5.5" x 3.5" (b/w)
Material Details: postcard
Physical Condition: Red ink stain is on the front right corner of postcard

Scope and Content:

Photograph shows 10th Street facing south from Princess Avenue. Visible landmarks and businesses include: Manitoba Power Commission (MPC)'s power sub-station, First Baptist Church, Wheat City Arena, and the grand stand at the Exhibition Grounds.

The partial sign visible at the bottom of the photograph on the east side of 10th Street reads Yates and Neale, which refers to a plumbing and heating company that dissolved in 1943 to be replaced by Neale, Stothard and Chapman.

Businesses on the west side of 10th Street include: Dominion Tire & Radio Co., Bolts Barber Shop, Elviss T.E. Co. Stables.

Notes: Information concerning Yates and Neale courtesy Jack Stothard. Writing on the front of the postcard reads: Brandon, Looking S.W., Jerrett Photo. This photograph shows a rare view of the 200-block of 10th Street.

Name Access: Manitoba Power Company
10th Street
Dominion Tire & Radio Co.
T.E. Elviss Co. Stables
First Baptist Church

Subject Access: downtowns
street scenes
Brandon business buildings & facilities before 1940
aerial views
building exteriors
residences
churches

Storage Location: RG 5 photograph storage drawer





Anglican Church, Reston, Manitoba

<http://archives.brandonu.ca/en/permalink/descriptions10334>

Part Of: RG 11 Lawrence Stuckey fonds

Creator: L.A. Stuckey

Description Level: Item

Series Number: 3.3

Item Number: 1-2002.3.3.CPR[71]

Accession Number: 1-2002

GMD: graphic

Date Range: July 1, 1986

Physical Description: 2.5" x 2.75" (b/w)

Material Details: Negative

Custodial History:

For custodial history see the collection level description of the Lawrence Stuckey collection.

Scope and Content:

Image of the Anglican Church in Reston, Manitoba. Image was taken along the CPR lines south of the mainline.

Name Access: Reston

Reston Anglican Church

Subject Access: churches

Repro Restriction: The McKee Archives is the copyright holder of the Stuckey materials.

Storage Location: Lawrence Stuckey collection

Images





Bethel Church (1895) on Highway 2-21 near Hartney Junction

<http://archives.brandonu.ca/en/permalink/descriptions10917>

Part Of: RG 11 Lawrence Stuckey fonds

Creator: L.A. Stuckey

Description Level: Item

Series Number: 3.3

Item Number: 1-2002.3.3.BSW[351]

Accession Number: 1-2002

GMD: graphic

Date Range: June 14, 1977

Physical Description: 2.5" x 2.75" (b/w)

Material Details: Negative

Custodial History:

For custodial history see the collection level description of the Lawrence Stuckey collection.

Scope and Content:

Image of Bethel Church (1895) on Highway 2-21 near Hartney Junction.

Notes: [Brandon SW includes communities south of Trans-Canada #1 highway and west of PTH #10.]

Name Access: Bethel Church
Hartney Junction

Subject Access: churches

Repro Restriction: The McKee Archives is the copyright holder of the Stuckey materials.

Storage Location: Lawrence Stuckey collection

Images



Bethel Church (1895) on Highways 2 & 21 west of Deleau, Manitoba.

<http://archives.brandonu.ca/en/permalink/descriptions10892>

Part Of: RG 11 Lawrence Stuckey fonds

Creator: L.A. Stuckey



Description Level: Item
Series Number: 3.3
Item Number: 1-2002.3.3.BSW[349a]
Accession Number: 1-2002
GMD: graphic
Date Range: Aug 25, 1979
Physical Description: 2.5" x 2.5" (b/w)
Material Details: Negative

History /

Biographical:

Mr. Stuckey's notes: 2 exterior and 3 windows.

Custodial History:

For custodial history see the collection level description of the Lawrence Stuckey collection.

Scope and Content:

Image of Bethel Church (1895) on Highways 2 & 21 west of Deleau, Manitoba.

Notes: [Brandon SW includes communities south of Trans-Canada #1 highway and west of PTH #10.] [Images 349a and 349b are images of the exterior of the church, and images 349c-349-e are images of the stained glass windows.]

Name Access: Bethel Church
Deleau, Manitoba

Subject Access: churches

Repro Restriction: The McKee Archives is the copyright holder of the Stuckey materials.

Storage Location: Lawrence Stuckey collection

Arrangement:

Mr. Stuckey put five negatives in the same envelope. We have separated them and numbered them (349a) to (349e)].

Images



Bethel Church (1895) on Highways 2 & 21 west of Deleau, Manitoba.

<http://archives.brandonu.ca/en/permalink/descriptions10897>



Part Of: RG 11 Lawrence Stuckey fonds
Creator: L.A. Stuckey
Description Level: Item
Series Number: 3.3
Item Number: 1-2002.3.3.BSW[349b]
Accession Number: 1-2002
GMD: graphic
Date Range: Aug 25, 1979
Physical Description: 2.5" x 2.5" (b/w)
Material Details: Negative
History /
Biographical:

Mr. Stuckey's notes: 2 exterior and 3 windows.

Custodial History:

For custodial history see the collection level description of the Lawrence Stuckey collection.

Scope and Content:

Image of Bethel Church (1895) on Highways 2 & 21 west of Deleau, Manitoba.

Notes: [Brandon SW includes communities south of Trans-Canada #1 highway and west of PTH #10.] [Images 349a and 349b are images of the exterior of the church, and images 349c-349-e are images of the stained glass windows.]

Name Access: Bethel Church
Deleau, Manitoba

Subject Access: churches

Repro Restriction: The McKee Archives is the copyright holder of the Stuckey materials.

Storage Location: Lawrence Stuckey collection

Arrangement:

Mr. Stuckey put five negatives in the same envelope. We have separated them and numbered them (349a) to (349e)].

Images



Bethel Church (1895) on Highways 2 & 21 west of Deleau,



Manitoba.

<http://archives.brandonu.ca/en/permalink/descriptions10901>

Part Of: RG 11 Lawrence Stuckey fonds
Creator: L.A. Stuckey
Description Level: Item
Series Number: 3.3
Item Number: 1-2002.3.3.BSW[349c]
Accession Number: 1-2002
GMD: graphic
Date Range: Aug 25, 1979
Physical Description: 2.5" x 2.5" (b/w)
Material Details: Negative

History /

Biographical:

Mr. Stuckey's notes: 2 exterior and 3 windows.

Custodial History:

For custodial history see the collection level description of the Lawrence Stuckey collection.

Scope and Content:

Image of Bethel Church (1895) on Highways 2 & 21 west of Deleau, Manitoba.

Notes: [Brandon SW includes communities south of Trans-Canada #1 highway and west of PTH #10.] [Images 349a and 349b are images of the exterior of the church, and images 349c-349-e are images of the stained glass windows.]

Name Access: Bethel Church
Deleau, Manitoba

Subject Access: churches

Repro Restriction: The McKee Archives is the copyright holder of the Stuckey materials.

Storage Location: Lawrence Stuckey collection

Arrangement:

Mr. Stuckey put five negatives in the same envelope. We have separated them and numbered them (349a) to (349e)].

Images





Bethel Church (1895) on Highways 2 & 21 west of Deleau, Manitoba.

<http://archives.brandonu.ca/en/permalink/descriptions10902>

Part Of: RG 11 Lawrence Stuckey fonds

Creator: L.A. Stuckey

Description Level: Item

Series Number: 3.3

Item Number: 1-2002.3.3.BSW[349d]

Accession Number: 1-2002

GMD: graphic

Date Range: Aug 25, 1979

Physical Description: 2.5" x 2.5" (b/w)

Material Details: Negative

History /

Biographical:

Mr. Stuckey's notes: 2 exterior and 3 windows.

Custodial History:

For custodial history see the collection level description of the Lawrence Stuckey collection.

Scope and Content:

Image of Bethel Church (1895) on Highways 2 & 21 west of Deleau, Manitoba.

Notes: [Brandon SW includes communities south of Trans-Canada #1 highway and west of PTH #10.] [Images 349a and 349b are images of the exterior of the church, and images 349c-349-e are images of the stained glass windows.]

Name Access: Bethel Church
Deleau, Manitoba

Subject Access: churches

Repro Restriction: The McKee Archives is the copyright holder of the Stuckey materials.

Storage Location: Lawrence Stuckey collection

Arrangement:

Mr. Stuckey put five negatives in the same envelope. We have separated them and numbered them (349a) to (349e)].

Images





Bethel Church (1895) on Highways 2 & 21 west of Deleau, Manitoba.

<http://archives.brandonu.ca/en/permalink/descriptions10904>

Part Of: RG 11 Lawrence Stuckey fonds

Creator: L.A. Stuckey

Description Level: Item

Series Number: 3.3

Item Number: 1-2002.3.3.BSW[349e]

Accession Number: 1-2002

GMD: graphic

Date Range: Aug 25, 1979

Physical Description: 2.5" x 2.5" (b/w)

Material Details: Negative

History /

Biographical:

Mr. Stuckey's notes: 2 exterior and 3 windows.

Custodial History:

For custodial history see the collection level description of the Lawrence Stuckey collection.

Scope and Content:

Image of Bethel Church (1895) on Highways 2 & 21 west of Deleau, Manitoba.

Notes: [Brandon SW includes communities south of Trans-Canada #1 highway and west of PTH #10.] [Images 349a and 349b are images of the exterior of the church, and images 349c-349-e are images of the stained glass windows.]

Name Access: Bethel Church
Deleau, Manitoba

Subject Access: churches

Repro Restriction: The McKee Archives is the copyright holder of the Stuckey materials.

Storage Location: Lawrence Stuckey collection

Arrangement:

Mr. Stuckey put five negatives in the same envelope. We have separated them and numbered them (349a) to (349e)].

Images





Brandon College/University calendars

<http://archives.brandonu.ca/en/permalink/descriptions151>

Part Of: RG 6 Brandon University fonds

Description Level: Sub-series

Series Number: 6.6

GMD: textual records

Date Range: 1900-2005

Physical Description: 1.40 m

Physical Condition: Generally good

History /

Biographical:

The University Calendar is the authoritative statement of the institutional structure, faculty and staff, and academic program of Brandon University. Since the creation of the College in 1900, calendars have been produced annually, with only a few exceptions, by the Registrar's Office.

Up until 1991-1992, the calendar was called the general calendar. In 1991-1992, it was called the undergraduate general calendar. Beginning in 1992, the calendar was produced every two years instead of annually, except for 1998-1999, until 2003. The 1992-1994 calendar contains both the undergraduate and graduate general calendars, and starting in 1994 a separate undergraduate and graduate calendar was produced.

Custodial History:

The Brandon College/University calendar was produced by the Registrar's Office. Individual copies of the calendar were held by the Registrar's Office until their transfer to the University Archives.

Scope and Content:

The sub-series consists of general calendars, general undergraduate and graduate calendars, as well as calendars for the School of Music, the Faculty of Education, and for spring and summer sessions. It has been divided into three sub sub series, including: (1) Calendars - bound archival copies; (2) Calendars - researcher's copies; and (3) Calendars - miscellaneous.

Notes: The Registrar, acting in his/her capacity as Secretary of Senate, is responsible for the production of the University calendar.

Subject Access: Academic programs
departments
administrative staff
board members
history
faculty

Accruals: Further accruals are expected.

Storage Location: RG 6 Brandon University fonds
Series 6: Senate

Arrangement:

Chronological



Calvary Church, Minnedosa, Manitoba.

<http://archives.brandonu.ca/en/permalink/descriptions10678>

Part Of: RG 11 Lawrence Stuckey fonds

Creator: L.A. Stuckey

Description Level: Item

Series Number: 3.3

Item Number: 1-2002.3.3.CPR[107]

Accession Number: 1-2002

GMD: graphic

Date Range: January 27, 1979

Physical Description: 2.5" x 2.5" (b/w)

Material Details: Negative

Custodial History:

For custodial history see the collection level description of the Lawrence Stuckey collection.

Scope and Content:

Image of Calvary Church, Minnedosa, Manitoba. Image was taken along the CPR Minnedosa & Bredenburg subdivision (ex. Manitoba & N.W. Railway).

Name Access: Minnedosa, Manitoba

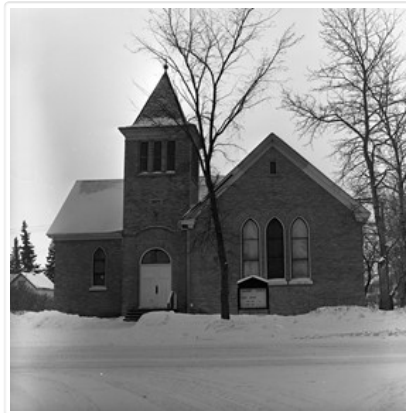
Calvary Church

Subject Access: churches

Repro Restriction: The McKee Archives is the copyright holder of the Stuckey materials.

Storage Location: Lawrence Stuckey collection

Images





Christmas at St. Matthews Church

<http://archives.brandonu.ca/en/permalink/descriptions10201>

Part Of: RG 12 Brandon and Area Photograph Collection

Description Level: Item

Series Number: 6

Item Number: BAPC 6.3

Accession Number: 4-1997

GMD: graphic

Date Range: 1886

Physical Description: 4.5" x 7" (b/w)

Material Details: On matting

Custodial History:

Donated to the Brandon College Library by Hilda Hesson in 1967.

Scope and Content:

Christmas 1886. St. Matthews Church in Brandon, MB

Notes: Writing on the back of the photo reads: Rector, Rev. E.P. Flewelling. The name W. Peters and other illegible words are also written.

Name Access: St. Matthews Church

Subject Access: Christmas
churches

Storage Location: BAPC photograph drawer

Images





Churches of Brandon postcard

<http://archives.brandonu.ca/en/permalink/descriptions13871>

Part Of: Fred McGuinness collection
Creator: Published by Christie's Bookstore, Brandon, Man.
Description Level: Item
Series Number: McG 9
Item Number: 20-2009.181
Accession Number: 20-2009
GMD: graphic
Date Range: 1910s
Physical Description: 3.5" x 5.5" (colour)
Material Details: postcard

Scope and Content:

Photograph shows exterior views of five Brandon churches: Baptist Church, Presbyterian Church, St. Matthew's Church, Catholic Church and Monastery, and Methodist Church.

Notes: Part of "Christie's Brandon Series of Six Colored Picture Postcards of Brandon, Manitoba, The Crown Series, Published by Christie's Bookstore, Brandon, Man." [note: missing sixth postcard]. Writing on the front of the photograph reads: Baptist Church, Presbyterian Church Brandon Man., St. Matthew's Church, Catholic Church and Monastery, Methodist Church.

Name Access: St. Matthew's Church
St. Augustine's Church
First Baptist Church
Presbyterian Church
Methodist Church

Subject Access: churches
building exteriors
Brandon business buildings & facilities before 1940

Storage Location: RG 5 photograph storage drawer 2 (hanging photos)

Arrangement:

From 20-2009 File 9

Images





Church, Shoal Lake, Manitoba.

<http://archives.brandonu.ca/en/permalink/descriptions10765>

Part Of: RG 11 Lawrence Stuckey fonds

Creator: L.A. Stuckey

Description Level: Item

Series Number: 3.3

Item Number: 1-2002.3.3.CPR[125]

Accession Number: 1-2002

GMD: graphic

Date Range: February 12, 1979

Physical Description: 2.5" x2.5" (b/w)

Material Details: Negative

Custodial History:

For custodial history see the collection level description of the Lawrence Stuckey collection.

Scope and Content:

Image of a church, Shoal Lake, Manitoba. Image was taken along the CPR Minnedosa & Bredenbury subdivision (ex. Manitoba & N.W. Railway).

Name Access: CPR

Shoal Lake, Manitoba

Subject Access: churches

Repro Restriction: The McKee Archives is the copyright holder of the Stuckey materials.

Storage Location: Lawrence Stuckey collection

Images





Church (stone), Minnedosa, Manitoba.

<http://archives.brandonu.ca/en/permalink/descriptions10673>

Part Of: RG 11 Lawrence Stuckey fonds

Creator: L.A. Stuckey

Description Level: Item

Series Number: 3.3

Item Number: 1-2002.3.3.CPR[106]

Accession Number: 1-2002

GMD: graphic

Date Range: January 29, 1979

Physical Description: 2.5" x 2.5" (b/w)

Material Details: Negative

Custodial History:

For custodial history see the collection level description of the Lawrence Stuckey collection.

Scope and Content:

Image of a stone church in Minnedosa, Manitoba. Image was taken along the CPR Minnedosa & Bredenbury subdivision (ex. Manitoba & N.W. Railway).

Notes: [The image appears to be an image of St. Mark's Anglican Church].

Name Access: Minnedosa, Manitoba

St. Mark's Anglican Church

Subject Access: churches

Repro Restriction: The McKee Archives is the copyright holder of the Stuckey materials.

Storage Location: Lawrence Stuckey collection

Images





City Hall and YMCA viewbook postcard

<http://archives.brandonu.ca/en/permalink/descriptions13885>

Part Of: Fred McGuinness collection

Creator: Printed by Photogelatine Engraving Co. Ltd., Ottawa

Description Level: Item

Series Number: McG 9

Item Number: 20-2009.195

Accession Number: 20-2009

GMD: graphic

Date Range: 1920s

Physical Description: 3.5" x 5.5" (b/w)

Material Details: postcard

Scope and Content:

Photograph shows two separate views. One is of the main entrance of (Old) City Hall on Princess Avenue. The other view shows the edifice of the YMCA building as well as the adjacent St. Paul's United and First United Churches on 8th Street.

Notes: Part of "Souvenir of Brandon, Manitoba, Canada [viewbook], Printed by Photogelatine Engraving Co. Limited, Ottawa." Dates obtained from the Burchill's Music Store Henderson's Brandon City Directory listings (1927-1929). Writing on the front of the photograph reads: City Hall - Brandon, Man; YMCA, St. Paul's United & First Church United, Brandon, Man.

Name Access: YMCA

St. Paul's United Church

First United Church

City Hall

Old City Hall

8th Street

Subject Access: Brandon business buildings & facilities before 1940

churches

building exteriors

Storage Location: RG 5 photograph storage drawer 2 (hanging photos)

Arrangement:

From 20-2009 photos

Images





Dorothy Cox collection

<http://archives.brandonu.ca/en/permalink/descriptions12724>

Part Of: RG 5 Western Manitoba Manuscript Collection

Description Level: Collection

Accession Number: 11-2012

GMD: multiple media

Date Range: 1878-1970

Physical Description: 17 cm textual records
4 color photographs

Physical Condition: Cover of Young School minute book is moderately damaged, but pages are in good condition with only minor water damage and a few ripped pages.

History /

Biographical:

Dorothy Cox (nee Frost) moved from Elm Creek to Justice in 1946 to work as a schoolteacher. In 1948, she married Laval Cox and together they had four children: Larry, Herd, Rosalie and Heather.

In 1949, Dorothy and Laval purchased Gibb Gillespie's PSV business and began hauling grain, cattle and agricultural equipment. Dorothy went back to teaching in 1959, first at Justice and then Elton Collegiate. After retiring from teaching in 1978, Dorothy started a greenhouse, which operated for 21 years.

All six members of the Cox family were active in community events and organizations. Dorothy was involved in establishing the baby band in 1951; her sons Larry and Herb were members. Along with Laval, Dorothy was a leader of the Cubs in 1955-1956 and again in 1958-1959. Laval was the leader of the local hockey club in 1958, and of a bible study group in 1960. Larry, Herb and Rosalie were avid skaters in 1960-64. Heather and Rosalie were enrolled in senior grades of Sunday school in 1970.

Custodial History:

Records were collected by Dorothy Cox, a resident of Justice, over a number of years. She donated them to the McKee Archives on April 4, 2012.

Scope and Content:

Collection consists of records related to the history of the Justice district. It includes a history of the Justice Church (1910-1970); minute and expense books for the Justice Hockey Club (1949-1966); a minute and expense book for Young Protestant School (1884-1898); a copy of the Justice 100th Anniversary community history (2009); and four color photographs of Justice Church.

Notes: History/Bio information taken from the content of the collection.
Description by James Heaman (2012).

Name Access: Justice, MB

Subject Access: churches
local histories
Hockey

Repro Restriction: Church photos taken in 1970 are subject to Canadian copyright restrictions, which researchers are required to comply with.

Related Material: Lawrence Stuckey fonds 1-2002 (photographs of Justice school, church, elevator and houses)



Dunston United Church, built 1895, near Miami, Manitoba

<http://archives.brandonu.ca/en/permalink/descriptions11129>

Part Of: RG 11 Lawrence Stuckey fonds

Creator: L.A. Stuckey

Description Level: Item

Series Number: 3.3

Item Number: 1-2002.3.3.BSE[365a]

GMD: graphic

Date Range: May 1, 1977

Physical Description: 2.5" x 2.25"

Material Details: Negative

Custodial History:

For custodial history see the collection level description of the Lawrence Stuckey collection.

Scope and Content:

Image of Dunston United Church, built 1895, near Miami, Manitoba.

Notes: [Brandon SE includes communities south of Trans-Canada #1 highway and east of PTH #10.]

Name Access: Dunston United Church
Miami, Manitoba

Subject Access: churches

Storage Location: Lawrence Stuckey collection

Arrangement:

[Mr. Stuckey put two negatives in the same envelope. We have separated them and numbered the negatives (365a) and (365b)].

Images





English Church, Killarney

<http://archives.brandonu.ca/en/permalink/descriptions13910>

Part Of: Fred McGuinness collection
Creator: Photographer: Winnipeg Photo Company
Description Level: Item
Series Number: McG 9
Item Number: 20-2009.220
Accession Number: 20-2009
GMD: graphic
Date Range: 1908
Physical Description: 5.5" x 3.5" (b/w)
Material Details: postcard
Physical Condition: Photocard has been mailed
Scope and Content:

Photograph shows the English Church in Killarney, Manitoba. The entrance to the brick structure is obscured by trees.

Notes: Writing on the front of the postcard reads: English Church, Killarney, Copyright Canada 1908 by Winnipeg Photo Company, No. 3. Writing on the back of the postcard reads: Photo Post Card by Winnipeg Photo Co., Napinka, Man. The postcard is addressed to Miss Annie Pope of 638 Pacific Avenue, Brandon. A green one cent King George stamp is postmarked Killarney Manitoba 22 July 1908.

Name Access: Killarney, Manitoba
Church of England

Subject Access: churches

Storage Location: RG 5 photograph storage drawer 2 (hanging photos)

Arrangement:

From 20-2009 #4 plastic envelope #2

Images



Frank Robb fonds

<http://archives.brandonu.ca/en/permalink/descriptions5133>

Part Of: RG 5 Western Manitoba Manuscript Collection
Description Level: Collection

Accession Number: 22-2007

GMD: multiple media

Date Range: 1956 - c.1965

Physical Description: 0.5 cm textual records; 155 slides

History /

Biographical:

Frank Robb was Assistant Secretary Treasurer for School District of Brandon No. 129 and Curator of the B.J. Hales Natural History Museum exhibition for Brandon's 75th Anniversary (1957). Robb left Brandon ca. 1969 and relocated to Minaki, Ontario.

Custodial History:

Frank Robb sent the slides to Fred McGuiness ca. 1986. McGuiness gave them to Eileen McFadden at the McKee Archives in April 1986.

Scope and Content:

Fonds consists of 155 slides taken by Frank Robb, an inventory for the slides prepared by Robb and a letter from Robb to Fred McGuiness regarding the slides and memories of Brandon ca. 1950s.

Notes: Description by Christy Henry.

Name Access: Albert Hepinstall

John Bojarski

Frank Robb

Doreen Walton (nee Rookes)

Lily Harrison

Subject Access: B.J. Hales Museum

Brandon 75th Anniversary

Brandon Camera Club

Royal Beardedde Ballet

ladies' auxiliary

First United Church

School District of Brandon No. 129

flooding

summer fair

T.A. Neelin High School

Vincent Massey High School

dam

Experimental farm

Bedford Drive

Souris' swinging bridge

Highway No. 1 by-pass

School Teacher night classes

18th Street

Storage Location: 2007 accessions

Storage Range: 2007 accessions

Arrangement:

Original order and numbering system.



Grund church and congregation - Baldur, MB

<http://archives.brandonu.ca/en/permalink/descriptions14427>

Part Of: James Wall collection

Description Level: Item

Series Number: Box 1

Item Number: 12-2004.34

Accession Number: 12-2004

GMD: graphic

Date Range: [1900-1904]

Physical Description: 7.5" x 4.5" (b/w)

Material Details: On matting (10.9" x 8")

Physical Condition: There is a scratch across the centre of the photo and one on the right hand side with a mark below it.

Custodial History:

See collection level description for the James Douglas Wall collection.

Scope and Content:

Group portrait taken in front of what might be Grund Church. The large group of people, which includes children, adults, a horse drawn carriage and a couple of bicycles, may be members of the church congregation.

Subject Access: rural images
churches

Storage Location: 2004 accessions

Images

