

S. J. McKee Archives



Alex Fowler in his store - Baldur, MB

<http://archives.brandonu.ca/en/permalink/descriptions14403>

Part Of: James Wall collection
Description Level: Item
Series Number: Box 2
Item Number: 12-2004.10
Accession Number: 12-2004
GMD: graphic
Date Range: [1900-1904]
Physical Description: 5.5" x 4" (b/w)
Material Details: On matting (6.44" x 4.1")
Physical Condition: good

History /

Biographical:

The Fowler Block in Baldur, MB was built in 1899 by Alex Fowler.

Custodial History:

See collection level description for the James Douglas Wall collection.

Scope and Content:

Image of Alex Fowler standing at the counter in his store. The shelves behind him are stacked with tins of dry good, while the shelves to his side are stacked with china and glass items. The post office operated out of the back of the store.

Subject Access: rural images
Storage Location: 2004 accessions

Images





Alf Fowler collection

<http://archives.brandonu.ca/en/permalink/descriptions4794>

Part Of: RG 5 Western Manitoba Manuscript Collection
Creator: Davidson & Gowen
Description Level: Fonds
Accession Number: 6-1999
GMD: graphic
Date Range: 1912
Physical Description: 105 b/w photographs

History /

Biographical:

Alfred Fowler was born in 1903, in Toronto, Ontario. At the age of 23 he began working for Canadian National Railways (C.N.R.) in the company's telegraph accounting department. He remained employed there for 45 years, with the exception of the years 1940-45 when he served with the Royal Canadian Artillery during World War II. During his service he was stationed at Shilo, Manitoba, where he met his future wife, Elsie Bowen. They were married late in 1944, and in 1945 returned to Toronto. Fowler remained in Toronto until his death in 1969. Throughout his life, Mr. Fowler was an ardent amateur photographer.

Custodial History:

All 105 prints in this collection were created by Davidson & Gowen, a photography business located in Brandon. It seems likely that they were created for display and/or for commercial sale as part of the November 7, 1912 "Harvest" edition of The Brandon Sun. Alfred Fowler acquired a copy of the Davidson and Gowen prints during his stay at C.F.B. Shilo during the Second World War. In 1946 Alfred Fowler left Brandon returning to his home in Toronto. With the death of Alfred in 1969 the collection passed to his wife, Elsie Fowler. Elsie died in 1987, also in Toronto. Her estate passed to her nephew, Byron Forsyth, a Brandon resident. Byron brought the collection back to Brandon and in 1999 donated it to the McKee Archives.

Scope and Content:

The prints concern various subjects in Brandon, Manitoba c. 1911-1912 including Brandon residences, store fronts/businesses, streetscapes, churches, the Brandon Fair, parks, hotels, institutional structures (ie hospitals, City Hall) and rail yards (both Canadian Northern and Canadian Pacific) in the city. These images provide a visual record of Brandon in the years just before the Great War.

Notes: CAIN No. 202647. All addresses listed for photographs in the Fowler collection were derived from Henderson's Directories (1911, 1913).
Location Copy: Copies of the photographs are in the green binder on the reference shelf in the reading room. Negatives for CPR photographs have been placed with 6-1999.10 (CPR Railway depot).
Storage Location: RG 5 photograph storage drawer.



Baldur hockey team

<http://archives.brandonu.ca/en/permalink/descriptions14415>

Part Of: James Wall collection

Description Level: Item

Series Number: Box 1

Item Number: 12-2004.23

Accession Number: 12-2004

GMD: graphic

Date Range: 1904

Physical Description: 4.75" x 3.75" (b/w)

Material Details: On matting (8.4" x 6.4")

Physical Condition: good

Custodial History:

See collection level description for the James Douglas Wall collection.

Scope and Content:

Image of the men's hockey team from Baldur, MB.

Notes: Writing on the back of the image reads: "Baldur Hockey Bums Abroad 1904"

Subject Access: rural images

Storage Location: 2004 accessions

Images





Baldur, Manitoba

<http://archives.brandonu.ca/en/permalink/descriptions14394>

Part Of: James Wall collection

Description Level: Item

Series Number: Box 1

Item Number: 12-2004.1

Accession Number: 12-2004

GMD: graphic

Date Range: [1903]

Physical Description: 8" x 6" (b/w)

Material Details: On matting (12" x 10")

Physical Condition: good

Custodial History:

See collection level description for the James Douglas Wall collection.

Scope and Content:

Image shows a view of Baldur, MB with a body of water and train tracks in the foreground.

Notes: 12-2004.15 indicates the water was caused by spring flooding.

Subject Access: rural images

Location Copy: Same as 12-2004.15

Storage Location: 2004 accessions

Images





Baldur, Manitoba from southwest

<http://archives.brandonu.ca/en/permalink/descriptions14407>

Part Of: James Wall collection

Description Level: Item

Series Number: Box 1

Item Number: 12-2004.14

Accession Number: 12-2004

GMD: graphic

Date Range: 1903

Physical Description: 6.6" x 4.75" (b/w)

Material Details: On matting (8.75" x 7")

Physical Condition: good

Custodial History:

See collection level description for the James Douglas Wall collection.

Scope and Content:

Image of Baldur, MB, including grain elevators.

Subject Access: rural images

Storage Location: 2004 accessions

Images





Baldur, Manitoba - snow on the ground

<http://archives.brandonu.ca/en/permalink/descriptions14406>

Part Of: James Wall collection

Description Level: Item

Series Number: Box 1

Item Number: 12-2004.13

Accession Number: 12-2004

GMD: graphic

Date Range: September 13, 1903

Physical Description: 6.6" x 4.75" (b/w)

Material Details: On matting (9" x 7")

Custodial History:

See collection level description for the James Douglas Wall collection.

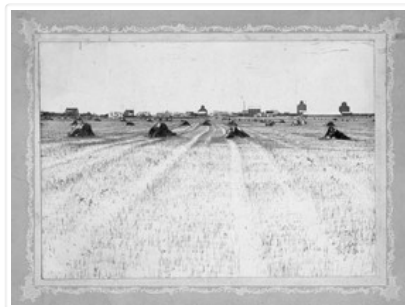
Scope and Content:

Image of Baldur, MB with a field in the foreground. The field has a light snow covering and stacks of hay. Baldur is in the background.

Subject Access: rural images

Storage Location: 2004 accessions

Images





Baldur, Manitoba spring flood

<http://archives.brandonu.ca/en/permalink/descriptions14408>

Part Of: James Wall collection

Description Level: Item

Series Number: Box 1

Item Number: 12-2004.15

Accession Number: 12-2004

GMD: graphic

Date Range: 1903

Physical Description: 8" x 6" (b/w)

Material Details: On matting (12" x 10")

Physical Condition: good

Custodial History:

See collection level description for the James Douglas Wall collection.

Scope and Content:

Image of Baldur, MB, with a body of water, possibly from spring flooding, in the foreground.

Subject Access: rural images

Location Copy: Same as 12-2004.1

Storage Location: 2004 accessions

Images





Baldur, MB

<http://archives.brandonu.ca/en/permalink/descriptions14400>

Part Of: James Wall collection

Description Level: Item

Series Number: Box 2

Item Number: 12-2004.7

Accession Number: 12-2004

GMD: graphic

Date Range: [1900-1904]

Physical Description: 5.6" x 4" (b/w)

Material Details: On matting (7.5" x 5.6")

Physical Condition: good

Custodial History:

See collection level description for the James Douglas Wall collection.

Scope and Content:

Image of the town of Baldur, MB. Visible is the L. Curtis Block. Canadian Northern rail cars are in the foreground with horse drawn carts and men working on road and town buildings behind.

Subject Access: rural images

Storage Location: 2004 accessions

Images





Baldur, MB from south

<http://archives.brandonu.ca/en/permalink/descriptions14399>

Part Of: James Wall collection

Description Level: Item

Series Number: Box 2

Item Number: 12-2004.6

Accession Number: 12-2004

GMD: graphic

Date Range: 1903

Physical Description: 6.75" x 4.75" (b/w)

Material Details: On matting (9" x 7")

Physical Condition: good

Custodial History:

See collection level description for the James Douglas Wall collection.

Scope and Content:

Image of the town of Baldur, MB. Looking south a body of water is in the foreground.

Subject Access: rural images

Storage Location: 2004 accessions

Images





Bateman house - Baldur, MB

<http://archives.brandonu.ca/en/permalink/descriptions14410>

Part Of: James Wall collection
Description Level: Item
Series Number: Box 2
Item Number: 12-2004.17
Accession Number: 12-2004
GMD: graphic
Date Range: [1900-1904]
Physical Description: 4" x 3" (b/w)
Material Details: On matting (6" x 5")
Physical Condition: Some bright spots/discoloration along the top and right side of the photo
Custodial History:

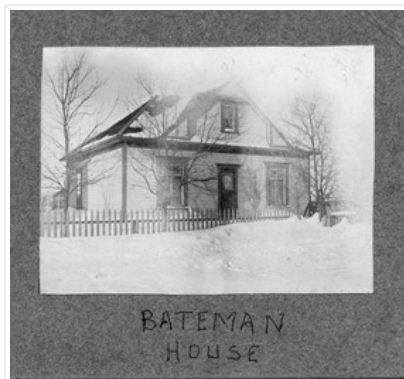
See collection level description for the James Douglas Wall collection.

Scope and Content:

Image of the Bateman house, located in Baldur, MB, in winter.

Subject Access: rural images
winter
Storage Location: 2004 accessions

Images





Benedict Anderson - Baldur, MB

<http://archives.brandonu.ca/en/permalink/descriptions14422>

Part Of: James Wall collection
Creator: Photographer: E.L. Lane, Glenboro, MB
Description Level: Item
Series Number: Box 2
Item Number: 12-2004.29
Accession Number: 12-2004
GMD: graphic
Date Range: [1903-1904]
Physical Description: 3.5" x 5.1" (b/w)
Material Details: On matting (5.25" x 7.25")
Physical Condition: good

History /

Biographical:

Benedict Anderson married Millie Goodman on February 21, 1929 (Grund District info from Baldur book, page 435, RM of Argyle)

Custodial History:

See collection level description for the James Douglas Wall collection.

Scope and Content:

Studio portrait of a man, probably Benedict Anderson, from Baldur, MB.

Subject Access: rural images

Storage Location: 2004 accessions

Images





Canadian Northern Railway station interior - Baldur, MB

<http://archives.brandonu.ca/en/permalink/descriptions14414>

Part Of: James Wall collection

Description Level: Item

Series Number: Box 1

Item Number: 12-2004.22

Accession Number: 12-2004

GMD: graphic

Date Range: [1900-1904]

Physical Description: 7" x 5" (b/w)

Material Details: On matting (9.25" x 7.25")

Physical Condition: good

History /

Biographical:

From the back of the photo: In 1922 to become Canadian National Railway. Building moved to Austin, MB to the Manitoba Agriculture Museum (CNP).

Custodial History:

See collection level description for the James Douglas Wall collection.

Scope and Content:

Image of the station agent inside the Canadian Northern Railway station in Baldur, MB.

Subject Access: rural images

railway stations

Storage Location: 2004 accessions

Images





CKX

<http://archives.bradonu.ca/en/permalink/descriptions10950>

Part Of:	RG 5 Western Manitoba Manuscript Collection
Description Level:	Fonds
Accession Number:	11-2010
GMD:	graphic
Date Range:	1954-1973
Storage Location:	2010 accessions



Cleghorn Pharmacy - Baldur, MB

<http://archives.brandonu.ca/en/permalink/descriptions14404>

Part Of: James Wall collection
Description Level: Item
Series Number: Box 2
Item Number: 12-2004.11
Accession Number: 12-2004
GMD: graphic
Date Range: [1900-1904]
Physical Description: 5.5" x 4" (b/w)
Material Details: On matting (6.44" x 4.1")
Physical Condition: Tiny piece of the photo is missing from the bottom edge and there are a few hairline cracks along the top of the photo

Custodial History:

See collection level description for the James Douglas Wall collection.

Scope and Content:

Image of three men standing in front of a building that appears to be Cleghorn's drug store.

Subject Access: rural images

Storage Location: 2004 accessions

Images





Curtis block - Baldur, MB

<http://archives.brandonu.ca/en/permalink/descriptions14401>

Part Of: James Wall collection

Description Level: Item

Series Number: Box 2

Item Number: 12-2004.8

Accession Number: 12-2004

GMD: graphic

Date Range: [1900-1904]

Physical Description: 5.6" x 4" (b/w)

Material Details: On matting (7.5" x 5.6")

Physical Condition: good

History /

Biographical:

The Curtis Block was built in 1900, possibly by Fred Stevens.

Custodial History:

See collection level description for the James Douglas Wall collection.

Scope and Content:

Image of the Curtis Block in Baldur, MB. The Victoria Hall, for public performances, was located on the upper floor. A group of men, one holding a hockey stick, and a dog are standing in front of the street entrance to the building.

Subject Access: rural images

Storage Location: 2004 accessions

Images



Dr. L.M. Cleghorn - Baldur, MB

<http://archives.brandonu.ca/en/permalink/descriptions14417>

Part Of: James Wall collection

Creator: Photographer: J.G. Macdonald, Moosomin, Assa.

Description Level: Item

Series Number: Box 2

Item Number: 12-2004.25

Accession Number: 12-2004



GMD: graphic
Date Range: [1900-1904]
Physical Description: 2.25" x 5.5" (b/w)
Material Details: On matting (5" x 8.75")
Physical Condition: Photo is faded and has some discoloration dots throughout
History /
Biographical:
Dr. L.M. Cleghorn was born in 1863 and died in 1926.
Custodial History:
See collection level description for the James Douglas Wall collection.
Scope and Content:
Studio portrait of Dr. L.M. Cleghorn, who owned the pharmacy in Baldur, MB.
Subject Access: rural images
Storage Location: 2004 accessions

Images





Dr. L.M. Cleghorn's house - Baldur, MB

<http://archives.brandonu.ca/en/permalink/descriptions14409>

Part Of: James Wall collection
Description Level: Item
Series Number: Box 2
Item Number: 12-2004.16
Accession Number: 12-2004
GMD: graphic
Date Range: [1900-1904]
Physical Description: 5" x 4" (b/w)
Material Details: On matting (6" x 5.25")
Physical Condition: good
Custodial History:

See collection level description for the James Douglas Wall collection.

Scope and Content:

Image of two women and a child on the porch of Doctor Cleghorn's house in Baldur, MB.

Subject Access: rural images
Storage Location: 2004 accessions

Images



Edward Walker fonds

<http://archives.brandonu.ca/en/permalink/descriptions4888>

Part Of: RG 5 Western Manitoba Manuscript Collection
Description Level: Fonds
Accession Number: 24-2006
GMD: graphic
Date Range: 1896-1920; predominant 1896-1910
Physical Description: 55 glass plate negatives
(52 at 5x7; 3 at 3X5)

History /

Biographical:

Edward Walker was born in Lymm, Cheshire, England in 1836. He emigrated to Canada at age 59 in 1895, from Stockport, England. Walker came to Canada with three of his children - Dora, Daisy and Theo - and settled in Millwood, Manitoba. In childhood, Walker was a victim of polio and walked with the aid of two canes throughout his adult life. Walker was a professional photographer. Once in Canada, he also took out a homestead at N.W. 18-19-229, though it appears that his son Theo did most of the work required to gain title to the property. In addition to his work as a photographer, Walker was appointed post-master for Millwood in 1901, and operated a small store. Edward Walker retired as postmaster in 1920. He died in 1923.

Custodial History:

The Walker fonds arrived at the S.J. McKee Archives as part of the Lawrence Stuckey Collection in 2001. While the circumstances are not known, it seems evident that Stuckey acquired the Walker negatives in the course of his professional career as a photographer and collector.

Scope and Content:

Fonds contains a variety of images of Millwood, Manitoba and the surrounding agricultural community, its people, and life produced by Edward Walker in the course of his work as a professional photographer. These images were produced from gelatin dry plate negatives, a process introduced around 1880, to replace the wet collodion process in which a photographic solution was applied to a glass plate just prior to exposure. Edward Walker's pictorial account of life in and around Millwood Manitoba circa 1900, is an important photographic legacy of pioneer life on the upper reaches of the Assiniboine Valley.

The village of Millwood was located in the Assiniboine River valley close to the Manitoba-Saskatchewan border just a few miles northwest of Binscarth and a similar distance southwest of Russell. It came into existence in 1887, with the construction of the Manitoba and North-Western Railway, a road that ran diagonally through the new West from Prince Albert, North West Territories to Portage la Prairie Manitoba.

Notes:	Description by Tom Mitchell.
Storage Location:	2006 accessions
Storage Range:	2006 accessions
Related Material:	Several prints were located with the Walker Negatives. These were created by Lawrence Stuckey and have been located with the Lawrence Stuckey collection and identified as "Edward Walker" prints.

RG 6, 8.2.4 (Library - S.J. McKee Archives - Archival displays).

Arrangement:

Edward Walker – Millwood negatives

1. Manitoba and Northwestern railway steam shovel loading flat cars for the “fill” c. 1900
2. Completed “fill” near Millwood c. 1900
3. Steam shovel filling flat cars for the “fill”
4. Boy and pony
5. Farmer in field
6. Portrait – man
7. Portrait – man and woman
8. Portrait – man and women
9. Portrait – man
10. Portrait – little girl
11. Baseball game in progress
12. Cottage home
13. Portrait – man
14. Portrait – little girl
15. Gentlemen, horse and dog.
16. Portrait – two men
17. Portrait – mother and daughter
18. Mill and new Mill elevators c. 1896
19. Horse power in harness
20. Construction of railway bridge
21. Construction railway bridge
22. First automobile Millwood
23. Man, horse, carriage
24. Horse, sled filled with dead moose
25. Harvest scene reaper in action
26. Aboriginal people, tee pee
27. North Western railway bridge over the Assiniboine c. 1900
28. Railway trestle near the “Clay Dump”, on west hill near Harrowby
29. Team of horse in harness drawing a sled
30. Boy, horse with steer tethered to horse’s tail
31. Horse drawn wagon with children, woman and dog



Family gathering - Baldur, MB

<http://archives.brandonu.ca/en/permalink/descriptions14428>

Part Of: James Wall collection

Description Level: Item

Series Number: Box 1

Item Number: 12-2004.35

Accession Number: 12-2004

GMD: graphic

Date Range: [1900-1904]

Physical Description: 6.75" x 4.9" (b/w)

Material Details: On matting (9.9" x 8")

Physical Condition: good

Custodial History:

See collection level description for the James Douglas Wall collection.

Scope and Content:

Group portrait of what may be a family reunion or wedding anniversary celebration. There are some potted plants and a couple of photographs placed in front of the group. The woman seated in the wooden chair towards the centre of the image is wearing a corsage.

Subject Access: rural images

Storage Location: 2004 accessions

Images





Fowler block - Baldur, MB

<http://archives.brandonu.ca/en/permalink/descriptions14402>

Part Of: James Wall collection
Description Level: Item
Series Number: Box 2
Item Number: 12-2004.9
Accession Number: 12-2004
GMD: graphic
Date Range: [1900-1904]
Physical Description: 5.5" x 4" (b/w)
Material Details: On matting (6.4" x 4.25")
Physical Condition: good

History /

Biographical:

The Fowler Block in Baldur, MB was built in 1899 by Alex Fowler.

Custodial History:

See collection level description for the James Douglas Wall collection.

Scope and Content:

Image of the Fowler Block in Baldur, MB. On the left is a shoe and harness shop owned and operated by the Fowlers from 1899-1978. On the right is J. Smith & Co. Merchants, a grocery and dry goods store. As of 2000, a grocery store still occupied the premises. Men are standing in front of the entrance to the two stores.

Subject Access: rural images
Storage Location: 2004 accessions

Images

