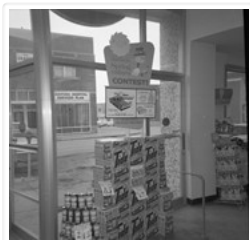


S. J. McKee Archives



Bob Shipley displays

<http://archives.brandonu.ca/en/permalink/descriptions13075>

Part Of: CKX fonds
Creator: CKX
Description Level: Item
Series Number: S
Item Number: 11-2010.S123a
Accession Number: 11-2010
GMD: graphic
Date Range: 196?
Physical Description: 1.5" x 1.5" (b/w)
Material Details: Negative
Custodial History:

See fonds level of the CKX records for custodial history.

Scope and Content:

Image of a store display.

Name Access: CKX
Subject Access: retail trade
store interiors
store displays
building exteriors
businesses
Storage Location: CKX fonds - 2010 accessions

Images





Dave Wright

<http://archives.brandonu.ca/en/permalink/descriptions12836>

Part Of: CKX fonds
Creator: CKX
Description Level: Item
Series Number: W
Item Number: 11-2010.W32
Accession Number: 11-2010
GMD: graphic
Date Range: 1969
Physical Description: 1.5" x 1.5" (b/w)
Material Details: Negative

Custodial History:

See fonds level of the CKX records for custodial history.

Scope and Content:

Portrait of a man.

Name Access: CKX
Dave Wright
Provincial Exhibition of Manitoba
Subject Access: persons
Portrait
building exteriors
Storage Location: CKX fonds - 2010 accessions

Images





Diehl's Funeral Home (Souris)

<http://archives.brandonu.ca/en/permalink/descriptions13117>

Part Of: CKX fonds
Creator: CKX
Description Level: Item
Series Number: S
Item Number: 11-2010.S104
Accession Number: 11-2010
GMD: graphic
Date Range: after 1954
Physical Description: 5" x 4" (b/w)
Material Details: Negative

Custodial History:

See fonds level of the CKX records for custodial history.

Scope and Content:

Image of Diehl's Funeral Home building.

Name Access: CKX
Diehl's Funeral Home
Subject Access: building exteriors
businesses
Storage Location: CKX fonds - 2010 accessions

Images





Feed Rite

<http://archives.brandonu.ca/en/permalink/descriptions13432>

Part Of: CKX fonds
Creator: CKX
Description Level: Item
Series Number: R
Item Number: 11-2010.R56
Accession Number: 11-2010
GMD: graphic
Date Range: 1967
Physical Description: 1.5" x 1.5" (b/w)
Material Details: Negative

Custodial History:

See fonds level of the CKX records for custodial history.

Scope and Content:

Image of a Feed Rite mill.

Name Access: CKX
Feed-Rite Mill
Subject Access: businesses
cars
commercial buildings
signs and signboards
building exteriors

Storage Location: CKX fonds - 2010 accessions

Images





Gary Robertson

<http://archives.brandonu.ca/en/permalink/descriptions13369>

Part Of: CKX fonds
Creator: CKX
Description Level: Item
Series Number: R
Item Number: 11-2010.R89
Accession Number: 11-2010
GMD: graphic
Date Range: July 1, 1965
Physical Description: 2.5" x 2.5" (b/w)
Material Details: Negative

Custodial History:

See fonds level of the CKX records for custodial history.

Scope and Content:

Portrait of Gary Robertson.

Name Access: CKX
Subject Access: building exteriors
portraits
persons
cars

Storage Location: CKX fonds - 2010 accessions

Images





H.E. Wright Farm Equipment

<http://archives.brandonu.ca/en/permalink/descriptions12878>

Part Of: CKX fonds
Creator: CKX
Description Level: Item
Series Number: W
Item Number: 11-2010.W3b
Accession Number: 11-2010
GMD: graphic
Date Range: after 1954
Physical Description: 5" x 4" (b/w)
Material Details: Negative

Custodial History:

See fonds level of the CKX records for custodial history.

Scope and Content:

Image of a tractor.

Name Access: CKX
H.E. Wright Farm Equipment
Federal Grain Limited
Subject Access: building exteriors
Grain elevators
Agriculture
Tractors
winter
Storage Location: CKX fonds - 2010 accessions

Images





H.E. Wright Farm Equipment

<http://archives.brandonu.ca/en/permalink/descriptions12879>

Part Of: CKX fonds
Creator: CKX
Description Level: Item
Series Number: W
Item Number: 11-2010.W3a
Accession Number: 11-2010
GMD: graphic
Date Range: after 1954
Physical Description: 5" x 4" (b/w)
Material Details: Negative

Custodial History:

See fonds level of the CKX records for custodial history.

Scope and Content:

Image of a tractor.

Name Access: CKX
H.E. Wright Farm Equipment
Federal Grain Limited
Subject Access: building exteriors
Grain elevators
Agriculture
Tractors
cars
businesses
Storage Location: CKX fonds - 2010 accessions

Images





Jim Sarase

<http://archives.brandonu.ca/en/permalink/descriptions13078>

Part Of: CKX fonds
Creator: CKX
Description Level: Item
Series Number: S
Item Number: 11-2010.S120
Accession Number: 11-2010
GMD: graphic
Date Range: 196?
Physical Description: 2.5" x 2.5" (b/w)
Material Details: Negative
Custodial History:

See fonds level of the CKX records for custodial history.

Scope and Content:

Image of a service station/restaurant building.

Name Access: CKX
Subject Access: building exteriors
businesses
service stations
restaurants
cars
signs and signboards
Storage Location: CKX fonds - 2010 accessions

Images



Mansfield's Western Shop - exterior

<http://archives.brandonu.ca/en/permalink/descriptions14328>

Part Of: CKX fonds
Creator: CKX
Description Level: Item

Series Number: M
Item Number: 11-2010.M3a
Accession Number: 11-2010
GMD: graphic
Date Range: 1967
Material Details: Negative

History /

Biographical:

Mansfield's Western Shop was located on the corner of 6th Street and Princess Avenue at 603 Princess Avenue. The business appears to have been opened in 1966 by Ed and Jessie Mansfield. The shop was originally owned by Norman D. Moore and was called Moore's Western Shop. According to the Henderson's Brandon City Directory Mansfield's was relocated several times during its ownership. In 1967 Mansfield's was relocated to 737 11th Street, by 1973 had relocated again to 731 Princess Avenue and remained there until at least 1984. Mansfield's Western Shop had moved to its final location at 1130 18th Street by 1988. Once Ed and Jessie retired the shop was taken over by their sons Les and Lyle Mansfield. Les and Lyle closed the store when they retired in 2015. Presently (2020) the H&Co Academy building stands where the original Mansfield's Western Shop stood on 6th Street.

For images on the Central Fire Station see the McGuinness Collection (20-2009) and the Lawrence Stuckey Collection (1-2002)

Seiberling The Tire Exchange was located at 603 Princess Avenue next to Mansfield's Western Shop. The business appears to have been opened in 1963. The shop was originally owned by Norman D. Moore who bought the shop in 1945 and named the business Moore's Tire Service. By 1972 Seiberling Tire Exchange had closed and Lyon's Tire City had opened and would remain there until 1976.

Custodial History:

See Fonds level description for custodial history

Scope and Content:

Image of the exterior of Mansfield's Western Shop looking on the corner of 6th Street and Princess Avenue. The image is looking west down Princess Avenue. Seiberling The Tire Exchange and the Central Fire Station are both visible west of Mansfield's Western Shop.

Notes: History/Bio information taken from Henderson's Directories. Description by Jillian Combs. Photo likely taken before April 30th based on the sign on the side of the building.

Subject Access: downtown
building exteriors
fire halls

Repro Restriction: Canadian Copyright Law may apply. Consult the archivist for access

Storage Location: CKX fonds - 2010 accessions

Arrangement:

Original order maintained. Series arranged alphabetically by letter (A-Z) but negatives not alphabetical within each series.

Images



Mark 7 Hobbycrafts

<http://archives.brandonu.ca/en/permalink/descriptions14326>

Part Of: CKX fonds

Creator: CKX

Description Level: Item

Series Number: M

Item Number: 11-2010.M1

Accession Number: 11-2010

GMD: graphic

Date Range: 1968

Material Details: Negative

History /

Biographical:

Mark 7 Hobbycrafts and Religious Supplies was located in the Security Building at 21 on 10th Street. The business appears to have opened on October 31 1966 and was owned by Lorne Baldrow. The previous owner of the store was Agusuta E. Wing and had called the store the Christian Book and Music Center. The store appears to have closed around 1969 when Lorne and his wife Edna moved to Calgary.

Custodial History:

See fonds level description for custodial history.

Scope and Content:

Image of the exterior of Mark 7 Hobbycrafts and Religious Supplies. Visible to the right is the office of Gerald Dressler, Optomistrist. To the left is a tenant sign for the Security Building. Tenants in 1968 included: the John Howard Society, Brandon Emergency Measures Organization, Viscount Optical, Kent's Accordion College, and Loch Lomond Knitwear Lts.

Notes: History/bio information taken from Henderson's Directories. Description by Christy Henry.

Subject Access: building exteriors

craft stores

downtown

optomitrists

Repro Restriction: Canadian Copyright Law may apply. Consult the archivist for access

Storage Location: CKX fonds - 2010 accessions

Arrangement:

Original order maintained. Series arranged alphabetically by letter (A-Z) but negatives not alphabetical within each series.





Matheson Lumber (Souris)

<http://archives.brandonu.ca/en/permalink/descriptions13111>

Part Of: CKX fonds
Creator: CKX
Description Level: Item
Series Number: S
Item Number: 11-2010.S107b
Accession Number: 11-2010
GMD: graphic
Date Range: after 1954
Physical Description: 5" x 4" (b/w)
Material Details: Negative

Custodial History:

See fonds level of the CKX records for custodial history.

Scope and Content:

Image of trucks in front of Matheson Lumber.

Name Access: CKX
Matheson Lumber
Subject Access: businesses
building exteriors
Trucks
employees
hardware stores

Storage Location: CKX fonds - 2010 accessions

Images





Matheson Lumber (Souris)

<http://archives.brandonu.ca/en/permalink/descriptions13112>

Part Of: CKX fonds
Creator: CKX
Description Level: Item
Series Number: S
Item Number: 11-2010.S107a
Accession Number: 11-2010
GMD: graphic
Date Range: after 1954
Physical Description: 5" x 4" (b/w)
Material Details: Negative

Custodial History:

See fonds level of the CKX records for custodial history.

Scope and Content:

Image of the Matheson Lumber building.

Name Access: CKX
Matheson Lumber
Subject Access: businesses
building exteriors
cars
signs and signboards
hardware stores

Storage Location: CKX fonds - 2010 accessions

Images





McDougall's (Virden)

<http://archives.brandonu.ca/en/permalink/descriptions12900>

Part Of: CKX fonds
Creator: CKX
Description Level: Item
Series Number: V
Item Number: 11-2010.V11
Accession Number: 11-2010
GMD: graphic
Date Range: after 1954
Physical Description: 5" x 4" (b/w)
Material Details: Negative

Custodial History:

See fonds level of the CKX records for custodial history.

Scope and Content:

Image of the McDougall's building.

Name Access: CKX
McDougall's
Subject Access: building exteriors
businesses
signs and signboards
store displays
clothing stores

Storage Location: CKX fonds - 2010 accessions

Images





Modern Groceries (Souris)

<http://archives.brandonu.ca/en/permalink/descriptions13114>

Part Of: CKX fonds
Creator: CKX
Description Level: Item
Series Number: S
Item Number: 11-2010.S106a
Accession Number: 11-2010
GMD: graphic
Date Range: after 1954
Physical Description: 5" x 4" (b/w)
Material Details: Negative

Custodial History:

See fonds level of the CKX records for custodial history.

Scope and Content:

Image of the Modern Groceries building.

Name Access: CKX
Modern Groceries
Subject Access: businesses
store exteriors
grocery trade
cars
building exteriors
signs and signboards

Storage Location: CKX fonds - 2010 accessions

Images





Murray's Farm Equipment (Souris)

<http://archives.brandonu.ca/en/permalink/descriptions13110>

Part Of: CKX fonds
Creator: CKX
Description Level: Item
Series Number: S
Item Number: 11-2010.S108
Accession Number: 11-2010
GMD: graphic
Date Range: after 1954
Physical Description: 5" x 4" (b/w)
Material Details: Negative

Custodial History:

See fonds level of the CKX records for custodial history.

Scope and Content:

Image of Murray's Farm Equipment.

Name Access: CKX
Murray's Farm Equipment
Subject Access: businesses
building exteriors
signs and signboards
cars
Tractors
farm implements
Storage Location: CKX fonds - 2010 accessions

Images



Murray's Garage (Neepawa) - exterior

<http://archives.brandonu.ca/en/permalink/descriptions14337>

Part Of: CKX fonds
Creator: CKX
Description Level: Item

Series Number: M
Item Number: 11-2010.M7a
Accession Number: 11-2010
GMD: graphic
Date Range: 1954
Material Details: Negative

History /

Biographical:

Murray's Garage opened in 1932 by Melvin Earl Murray. The business was later renamed Murray's of Neepawa in 1964.

Custodial History:

See Fonds level description for custodial history

Scope and Content:

Murray's Garage opened in 1932 by Melvin Earl Murray. Before it's opening in 1932 the building was used as a truck and storage facility, the business opened for automotive sales after Earl Murray had recieved a contract by General Motors in 1932. The first sale of a vehicle occurred in 1933 when a customer from Winnipeg bought a Pontiac vehicle. During the first few years of operation Earl Murray served as the Office Manager, Parts Manager, and Salesman. In 1934 an additional contract with the International Harvester Co. giving license to the additional sale of farm equipment. This new expansion resulted in the hiring of other staff to handle Parts and Service while the sales of the farm machinery remained Earl's responsibility.

The business aquired many contracts over the course of its existence as such new propoerties were aquired to allow for this expansions and new additions were added to the original building. When the new addition was near completion an explosion occured which resulted in 100% loss of the original building as well as all the contents it enclosed. Luckily, the fire department was able to save most of the new addition. A sizable loan was required for the buisness to rebuild after this disaster. Once the business was open again, car sales, need for parts, and service volume increased resulting in the complete recovery of the buisness.

In 1940 due to the war the purchase of new vehicles was limited to emergency service, it was at this time that General Motors added the Cheverolet-Oldsmobile to their contracts. Shortly after this a tornado hit the building causing substantial damage however it was soon repaired and business resumed.

Earl's son, Gerald, had worked in the business since his return from the war in 1945. He schooled in in Flint Michigan at a General Motors Business Institute to assist his father with the business. In 1960 Gerald took a course in Detroit Michigan in a Post Graduate School of Modern Merchandising and Management. After his completion of this course Gerald moved back to Neepawa and took of the position of Sales Manager at his fathers garage. The business was later renamed Murray's of Neepawa in 1964 when Earl handed the keys to the business over to his son Gerald.

Notes: Description by Jillian Combs. Information from Manitoba Hisotrical Society,

Name Access: D.R. MacKay

Subject Access: building exteriors
downtown
Neepawa

Repro Restriction: Canadian Copyright Law may apply. Consult the archivist for access

Storage Location: CKX fonds - 2010 accessions

Related Material: D.R. MacKay fonds, Brandon College fonds, Brandon University fonds

Arrangement:

Original order maintained. Series arranged alphabetically by letter (A-Z) but negatives not alphabetical within each series.

Images



Murray's Garage (Neepawa) - exterior

<http://archives.brandonu.ca/en/permalink/descriptions14338>

Part Of:	CKX fonds
Creator:	CKX
Description Level:	Item
Series Number:	M
Item Number:	11-2010.M7a
Accession Number:	11-2010
GMD:	graphic
Date Range:	1954
Material Details:	Negative

History /

Biographical:

Murray's Garage opened in 1932 by Melvin Earl Murray. Before it's opening in 1932 the building was used as a truck and storage facility, the business opened for automotive sales after Earl Murray had recieved a contract by General Motors in 1932. The first sale of a vehicle occurred in 1933 when a customer from Winnipeg bought a Pontiac vehicle. During the first few years of operation Earl Murray served as the Office Manager, Parts Manager, and Salesman but in 1934 an additional contract with the International Harvester Co. giving license to the additional sale of farm equipment. This new expansion resulted in the hiring of other staff to handle Parts and Service while the sales of the farm machinery remained Earl's responsibility.

The business aquired many contracts over the course of its existence as such new propoerties were aquired to allow for this expansions and new additions were added to the original building. When the new addition was near completion an explosion occured which resulted in 100% loss of the original building as well as all the contents it enclosed. Luckily, the fire department was able to save most of the new addition. A sizable loan was required for the buisness to rebuild after this disaster. Once the business was open again, car sales, need for parts, and service volume increased resulting in the complete recovery of the buisness.

In 1940 due to the war the purchase of new vehicles was limited to emergency service. It was at this time that General Motors added the Cheverolet-Oldsmobile to their contracts. Shortly after this a tornado hit the building causing substantial damage however it was soon repaired and business resumed.

Earl's son, Gerald, had worked in the business since his return from the war in 1945. He schooled in in Flint Michigan at a General Motors Business Institute to assist his father with the business. In 1960 Gerald took a course in Detroit Michigan in a Post Graduate School of Modern Merchandising and Management. After his completion of this course Gerald moved back to Neepawa and took of the position of Sales Manager at his fathers garage. The business was later renamed Murray's of Neepawa in 1964 when Earl handed the keys to the business over to his son Gerald.

Custodial History:

See Fonds level description for custodial history

Scope and Content:

Image is of Murray's Garage exterior view. The photo was taken from across the street. There are a series of signs on the building "Firestone" on the peak of the building, "Murray's used cars" on the roof, and "Murrays Pontiac, Buick, GMC, Trucks" down the front of the building above the main entrance. Murray's Garage appears to be next to a Texaco station.

Notes:	Description by Jillian Combs. Information from Manitoba Hisotrical Society
Name Access:	Neepawa
Subject Access:	building exteriors downtown Rural
Repro Restriction:	Canadian Copyright Law may apply. Consult the archivist for access
Storage Location:	CKX fonds - 2010 accessions

Arrangement:

Original order maintained. Series arranged alphabetically by letter (A-Z) but negatives not alphabetical within each series.

Images





Murray's Garage (Souris)

<http://archives.brandonu.ca/en/permalink/descriptions13108>

Part Of: CKX fonds
Creator: CKX
Description Level: Item
Series Number: S
Item Number: 11-2010.S109b
Accession Number: 11-2010
GMD: graphic
Date Range: after 1954
Physical Description: 5" x 4" (b/w)
Material Details: Negative

Custodial History:

See fonds level of the CKX records for custodial history.

Scope and Content:

Image of Murray's Garage.

Name Access: CKX
Murray's Garage
Subject Access: businesses
car lots
cars
building exteriors
signs and signboards

Storage Location: CKX fonds - 2010 accessions

Images





Murray's Garage (Souris)

<http://archives.brandonu.ca/en/permalink/descriptions13109>

Part Of: CKX fonds
Creator: CKX
Description Level: Item
Series Number: S
Item Number: 11-2010.S109a
Accession Number: 11-2010
GMD: graphic
Date Range: after 1954
Physical Description: 5" x 4" (b/w)
Material Details: Negative

Custodial History:

See fonds level of the CKX records for custodial history.

Scope and Content:

Image of Murray's Garage.

Name Access: CKX
Murray's Garage
Subject Access: businesses
cars
building exteriors
signs and signboards

Storage Location: CKX fonds - 2010 accessions

Images





New Sally Ann Home

<http://archives.brandonu.ca/en/permalink/descriptions13247>

Part Of: CKX fonds
Creator: CKX
Description Level: Item
Series Number: S
Item Number: 11-2010.S28
Accession Number: 11-2010
GMD: graphic
Date Range: c.1968
Physical Description: 5" x 4" (b/w)
Material Details: Negative

Custodial History:

See fonds level of the CKX records for custodial history.

Scope and Content:

Image of the Sally Ann Home.

Name Access: CKX
Sally Ann Home
Subject Access: building exteriors
houses
trees

Storage Location: CKX fonds - 2010 accessions

Images

