

S. J. McKee Archives



Alex Fowler in his store - Baldur, MB

<http://archives.brandonu.ca/en/permalink/descriptions14403>

Part Of: James Wall collection
Description Level: Item
Series Number: Box 2
Item Number: 12-2004.10
Accession Number: 12-2004
GMD: graphic
Date Range: [1900-1904]
Physical Description: 5.5" x 4" (b/w)
Material Details: On matting (6.44" x 4.1")
Physical Condition: good

History /

Biographical:

The Fowler Block in Baldur, MB was built in 1899 by Alex Fowler.

Custodial History:

See collection level description for the James Douglas Wall collection.

Scope and Content:

Image of Alex Fowler standing at the counter in his store. The shelves behind him are stacked with tins of dry good, while the shelves to his side are stacked with china and glass items. The post office operated out of the back of the store.

Subject Access: rural images
Storage Location: 2004 accessions

Images





Baldur hockey team

<http://archives.brandonu.ca/en/permalink/descriptions14415>

Part Of: James Wall collection

Description Level: Item

Series Number: Box 1

Item Number: 12-2004.23

Accession Number: 12-2004

GMD: graphic

Date Range: 1904

Physical Description: 4.75" x 3.75" (b/w)

Material Details: On matting (8.4" x 6.4")

Physical Condition: good

Custodial History:

See collection level description for the James Douglas Wall collection.

Scope and Content:

Image of the men's hockey team from Baldur, MB.

Notes: Writing on the back of the image reads: "Baldur Hockey Bums Abroad 1904"

Subject Access: rural images

Storage Location: 2004 accessions

Images





Baldur, Manitoba

<http://archives.brandonu.ca/en/permalink/descriptions14394>

Part Of: James Wall collection

Description Level: Item

Series Number: Box 1

Item Number: 12-2004.1

Accession Number: 12-2004

GMD: graphic

Date Range: [1903]

Physical Description: 8" x 6" (b/w)

Material Details: On matting (12" x 10")

Physical Condition: good

Custodial History:

See collection level description for the James Douglas Wall collection.

Scope and Content:

Image shows a view of Baldur, MB with a body of water and train tracks in the foreground.

Notes: 12-2004.15 indicates the water was caused by spring flooding.

Subject Access: rural images

Location Copy: Same as 12-2004.15

Storage Location: 2004 accessions

Images





Baldur, Manitoba from southwest

<http://archives.brandonu.ca/en/permalink/descriptions14407>

Part Of: James Wall collection

Description Level: Item

Series Number: Box 1

Item Number: 12-2004.14

Accession Number: 12-2004

GMD: graphic

Date Range: 1903

Physical Description: 6.6" x 4.75" (b/w)

Material Details: On matting (8.75" x 7")

Physical Condition: good

Custodial History:

See collection level description for the James Douglas Wall collection.

Scope and Content:

Image of Baldur, MB, including grain elevators.

Subject Access: rural images

Storage Location: 2004 accessions

Images





Baldur, Manitoba - snow on the ground

<http://archives.brandonu.ca/en/permalink/descriptions14406>

Part Of: James Wall collection

Description Level: Item

Series Number: Box 1

Item Number: 12-2004.13

Accession Number: 12-2004

GMD: graphic

Date Range: September 13, 1903

Physical Description: 6.6" x 4.75" (b/w)

Material Details: On matting (9" x 7")

Custodial History:

See collection level description for the James Douglas Wall collection.

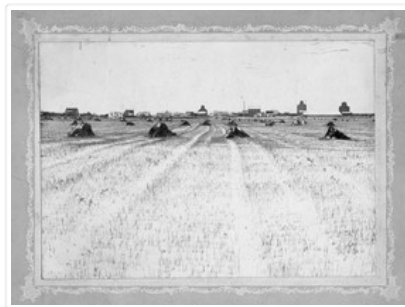
Scope and Content:

Image of Baldur, MB with a field in the foreground. The field has a light snow covering and stacks of hay. Baldur is in the background.

Subject Access: rural images

Storage Location: 2004 accessions

Images





Baldur, Manitoba spring flood

<http://archives.brandonu.ca/en/permalink/descriptions14408>

Part Of: James Wall collection

Description Level: Item

Series Number: Box 1

Item Number: 12-2004.15

Accession Number: 12-2004

GMD: graphic

Date Range: 1903

Physical Description: 8" x 6" (b/w)

Material Details: On matting (12" x 10")

Physical Condition: good

Custodial History:

See collection level description for the James Douglas Wall collection.

Scope and Content:

Image of Baldur, MB, with a body of water, possibly from spring flooding, in the foreground.

Subject Access: rural images

Location Copy: Same as 12-2004.1

Storage Location: 2004 accessions

Images





Baldur, MB from south

<http://archives.brandonu.ca/en/permalink/descriptions14399>

Part Of: James Wall collection

Description Level: Item

Series Number: Box 2

Item Number: 12-2004.6

Accession Number: 12-2004

GMD: graphic

Date Range: 1903

Physical Description: 6.75" x 4.75" (b/w)

Material Details: On matting (9" x 7")

Physical Condition: good

Custodial History:

See collection level description for the James Douglas Wall collection.

Scope and Content:

Image of the town of Baldur, MB. Looking south a body of water is in the foreground.

Subject Access: rural images

Storage Location: 2004 accessions

Images





Bateman house - Baldur, MB

<http://archives.brandonu.ca/en/permalink/descriptions14410>

Part Of: James Wall collection
Description Level: Item
Series Number: Box 2
Item Number: 12-2004.17
Accession Number: 12-2004
GMD: graphic
Date Range: [1900-1904]
Physical Description: 4" x 3" (b/w)
Material Details: On matting (6" x 5")
Physical Condition: Some bright spots/discoloration along the top and right side of the photo
Custodial History:

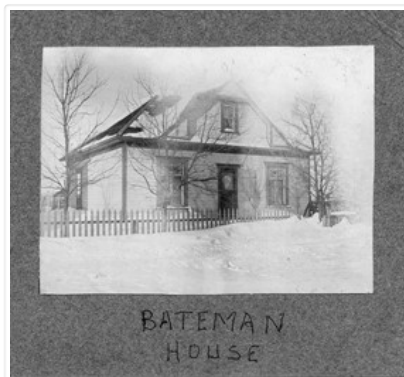
See collection level description for the James Douglas Wall collection.

Scope and Content:

Image of the Bateman house, located in Baldur, MB, in winter.

Subject Access: rural images
winter
Storage Location: 2004 accessions

Images





Benedict Anderson - Baldur, MB

<http://archives.brandonu.ca/en/permalink/descriptions14422>

Part Of: James Wall collection
Creator: Photographer: E.L. Lane, Glenboro, MB
Description Level: Item
Series Number: Box 2
Item Number: 12-2004.29
Accession Number: 12-2004
GMD: graphic
Date Range: [1903-1904]
Physical Description: 3.5" x 5.1" (b/w)
Material Details: On matting (5.25" x 7.25")
Physical Condition: good

History /

Biographical:

Benedict Anderson married Millie Goodman on February 21, 1929 (Grund District info from Baldur book, page 435, RM of Argyle)

Custodial History:

See collection level description for the James Douglas Wall collection.

Scope and Content:

Studio portrait of a man, probably Benedict Anderson, from Baldur, MB.

Subject Access: rural images

Storage Location: 2004 accessions

Images





Berbank Women's Aid fonds

<http://archives.brandonu.ca/en/permalink/descriptions4806>

Part Of: RG 5 Western Manitoba Manuscript Collection

Description Level: Collection

Accession Number: 27-1997

GMD: textual records

Date Range: 1919-1965

Physical Description: 6 cm

History /

Biographical:

Berbank Women's Aid was founded in 1919. It was, in large part, the Berbank Red Cross under a new name. The principal project of the original Berbank Ladies Aid was the construction of the Berbank Church, which was accomplished in 1919. In 1962, the organization was renamed the Berbank United Church Women. With the closing of the Berbank church in 1966, the Berbank United Church Women were dissolved.

Custodial History:

This fonds was accessioned by the McKee Archives in 1997. Prior custodial history is unknown.

Scope and Content:

This fonds consists of various minute books of the Berbank Ladies Aid, and its successor organization, dating from 1919 to 1965.

Notes: CAIN No. 202613

Subject Access: Red Cross

United Church of Canada

Rural Municipality of Oakland

Riverbank

Bertha

Rural women

religion in western Canada

Storage Location: 1997 accessions

Storage Range: 1997 accessions

Related Material: 18-1997 Riverbank/Berbank Red Cross fonds; 28-1997 Berbank Church fonds; and 8-1998 Bertha School District fonds are all located in the McKee Archives.



Bertha School District #861 fonds

<http://archives.brandonu.ca/en/permalink/descriptions4815>

Part Of: RG 5 Western Manitoba Manuscript Collection

Description Level: Collection

Accession Number: 8-1998

GMD: textual records

Date Range: 1896-1961

Physical Description: 24 cm

History /

Biographical:

The Bertha School District, located south of Brandon in the Rural Municipality of Oakland, was established in 1896. It was integrated into the School District of Nesbitt in 1961. Subsequently, it became part of the Souris Valley School Division.

Custodial History:

This fonds was accessioned by the McKee Archives in 1998. Prior custodial history is unknown.

Scope and Content:

Fonds consists of annual registers (1910-1961), minute books (1896-1962), account books (1896-1911, 1924-1956), an award of a Board of Arbitration (1961), a petition for consolidation with the School District of Nesbitt (1961), a financial report (1961), a map of the Souris Valley School Division showing rural school districts, and one debenture certificate (1896).

Notes: CAIN No. 202658

Subject Access: Rural Municipality of Oakland
Nesbitt School District
Souris Valley School Division
Rural Manitoba
schooling
history of Education

Storage Location: 1998 accessions

Storage Range: 1998 accessions

Related Material: Berbank Church fonds (28-1997), Berbank Ladies Aid fonds (27-1997) and Riverbank/Berbank Red Cross fonds (18-1997).



Binscarth Women's Institute fonds

<http://archives.brandonu.ca/en/permalink/descriptions4862>

Part Of: RG 5 Western Manitoba Manuscript Collection

Description Level: Collection

Accession Number: 12-1997

GMD: textual records

Date Range: 1928-1988; predominant 1928-1967

Physical Description: 13 cm

History /

Biographical:

The Binscarth Women's Institute began in 1928, as a division of the Manitoba Women's Institute. It was organized for rural women to come together in a social setting. The members of the Institute participated in fund raising for community projects initiated by the Institute. The Institute also undertook to organize community events. The last meeting of the Binscarth Women's Institute took place in 1967. The organization was never formally dissolved.

Custodial History:

This fonds was accessioned in 1997 by the McKee Archives. Prior custodial history is unknown.

Scope and Content:

Fonds contains minutes, financial records, and other material created by the Binscarth Women's Institute from its creation in 1928, to its final gathering in 1967. Aside from minutes and financial records, the fonds contains records of the Canadian Centennial celebrations of 1967, planned by the Institute.

Notes: CAIN No. 202583. Description by Robyn Mitchell.

Subject Access: W.C. Honey

Ethel Burnett

YWCA

Manitoba Department of Agriculture

Rural women

Centennial

Storage Location: 1997 accessions

Storage Range: 1997 accessions

Related Material: Related women's institute collections in the McKee Archives include:

Manitoba Women's Institute; Minnedosa Women's Institute; Cordova Women's Institute; Clanwilliam Women's Institute; Rathwell Women's Institute; Strathclair Women's Institute; Crocus Women's Institute; Southwest A Region - Manitoba Women's Institute; Douglas Women's Institute



Blyth Protestant School District #471 fonds

<http://archives.brandonu.ca/en/permalink/descriptions4853>

Part Of: RG 5 Western Manitoba Manuscript Collection

Description Level: Collection

Accession Number: 30-1997

GMD: textual records

Date Range: 1886-1963

Physical Description: 8 cm

History /

Biographical:

The Blyth Protestant School District #471 was founded in 1886. It became the Blyth School District following the elimination of the denominational school system in Manitoba in 1890. The District was located south of Brandon in the Rural Municipality of Cornwallis. The District existed until the mid-1960s, when it was incorporated into the Rolling River School Division.

Custodial History:

This fonds was accessioned by the McKee Archives in 1997. Prior custodial history is unknown.

Scope and Content:

Fonds includes the minute books, financial records (1886-1955), attendance registers (1887-1906), and related documents of the Blyth School District, Rural Municipality of Cornwallis. Aside from attendance records, the fonds contains documents relating to issues of teachers salaries, attendance policies, and holidays.

Notes: CAIN No. 202620

Subject Access: Rural Municipality of Cornwallis
Rolling River School Division
Schooling
Rural Manitoba
School attendance

Storage Location: 1997 accessions

Storage Range: 1997 accessions



Bradley Brothers threshing crew of Wheatland, Manitoba

<http://archives.brandonu.ca/en/permalink/descriptions10110>

Part Of: RG 12 Brandon and Area Photograph Collection

Description Level: Item

Series Number: 1

Item Number: BAPC 1.4

GMD: graphic

Date Range: [19-?]

Physical Description: 5" x 7" (b/w)

Material Details: On matting

Scope and Content:

Photograph shows the Bradley Bros. threshing crew of Wheatland, MB posing in a field. Faint writing in pencil on the back of the photo reads: Bill Le Paga(?), Tom B, Dave R., Andy R.

Subject Access:

- Agriculture
- farming
- agricultural machinery
- rural life
- threshing crews
- agricultural labourers

Storage Location: BAPC oversize storage drawer

Images





Canadian Northern Railway station interior - Baldur, MB

<http://archives.brandonu.ca/en/permalink/descriptions14414>

Part Of: James Wall collection

Description Level: Item

Series Number: Box 1

Item Number: 12-2004.22

Accession Number: 12-2004

GMD: graphic

Date Range: [1900-1904]

Physical Description: 7" x 5" (b/w)

Material Details: On matting (9.25" x 7.25")

Physical Condition: good

History /

Biographical:

From the back of the photo: In 1922 to become Canadian National Railway. Building moved to Austin, MB to the Manitoba Agriculture Museum (CNP).

Custodial History:

See collection level description for the James Douglas Wall collection.

Scope and Content:

Image of the station agent inside the Canadian Northern Railway station in Baldur, MB.

Subject Access: rural images

railway stations

Storage Location: 2004 accessions

Images





The city man's guide to the farm problem

<http://archives.brandonu.ca/en/permalink/specialcollections134>

Part Of: RG 4 Manitoba Pool Elevator fonds
Collection: Manitoba Pool Elevator Library Collection
Creator: Cochrane, Willard Wesley, 1914
Description Level: Item
Item Number: Archives 14-4-2
Item Number Range: Archives 14-4-2
Responsibility: [by] Willard W. Cochrane
Start Date: 1966
Date Range: 1966
Publication: New York ; Toronto : McGraw-Hill Book Company
Physical Description: 242 p. ; 20 cm
Notes: Bibliographical footnotes
Subject Access: Agriculture Economic aspects United States
United States Rural conditions
Storage Location: Box 4-Historical I
Storage Range: Box 4-Historical I



Clanwilliam Women's Institute fonds

<http://archives.brandonu.ca/en/permalink/descriptions4839>

Part Of: RG 5 Western Manitoba Manuscript Collection
Description Level: Collection
Accession Number: 3-2002
GMD: textual records
Date Range: 1947-1977
Physical Description: 13 cm

History /

Biographical:

The Women's Institute was founded in 1897 in Stoney Creek, Ontario, by Adelaide Hoodless. By 1913, institutes were established in all the provinces. In 1919, provincial representatives met in Winnipeg to form the Federated Women's Institute of Canada. The Women's Institute was designed to promote quality of life in rural Canada and to foster the advancement of rural women. The first Women's Institute in Manitoba was organized in 1910, in Morris, Manitoba. The Clanwilliam Women's Institute was created on March 24, 1947. The first president of the Institute was Mrs. Margaret Erven. The construction of a community hall was the initial project of the Institute, but it also made contributions to the maintenance of the local rink and to local charitable causes. The Institute continues to operate as of 2002.

Custodial History:

This fonds was accessioned in 2002 by the McKee Archives. Prior custodial history is unknown.

Scope and Content:

Fonds includes the minutes of the meetings of the Institute from 1947-1977. Included in the minutes are member lists from the various years. The Certificate of Organization for the Clanwilliam Women's Institute, dated September 5, 1947 is included as well. There is also a handwritten copy of the history of the Clanwilliam Women's Institute. Finally, the fonds includes the Institute's Annual Reports from 1949-1952 and from 1963-1965.

Notes: CAIN No. 202619. Description by Robyn Mitchell.

Subject Access: Mrs. Margaret Erven
Mrs. Margery Shaw
Mrs. Ellen Wilkinson
Mrs. Doris McQuarrie
Mrs. Anna Hagglund
Mrs. Joyce Crewsen
Mrs. Ruby McFarlane
Mrs. Lillian Pollon
Mrs. Sadie Hutton
Mrs. Alice Mead
Mrs. Connie Moad
Mrs. Rita McPherson
Mrs. Janet Josland
Clanwilliam Women's Institute
Village of Clanwilliam
Manitoba Women's Institute
Women's Institute
rural women
women's organization
citizenship

Storage Location: 2002 accessions

Storage Range: 2002 accessions

Related Material: Related women's institute collections in the McKee Archives include:

Manitoba Women's Institute; Minnedosa Women's Institute; Cordova Women's Institute; Clanwilliam Women's Institute; Rathwell Women's Institute; Strathclair Women's Institute; Crocus Women's Institute; Southwest A Region - Manitoba Women's Institute; Douglas Women's Institute



Cleghorn Pharmacy - Baldur, MB

<http://archives.brandonu.ca/en/permalink/descriptions14404>

Part Of: James Wall collection
Description Level: Item
Series Number: Box 2
Item Number: 12-2004.11
Accession Number: 12-2004
GMD: graphic
Date Range: [1900-1904]
Physical Description: 5.5" x 4" (b/w)
Material Details: On matting (6.44" x 4.1")
Physical Condition: Tiny piece of the photo is missing from the bottom edge and there are a few hairline cracks along the top of the photo

Custodial History:

See collection level description for the James Douglas Wall collection.

Scope and Content:

Image of three men standing in front of a building that appears to be Cleghorn's drug store.

Subject Access: rural images

Storage Location: 2004 accessions

Images



Cordova Women's Institute fonds

<http://archives.brandonu.ca/en/permalink/descriptions4861>

Part Of: RG 5 Western Manitoba Manuscript Collection
Description Level: Collection
Accession Number: 4-2002

GMD: textual records

Date Range: 1961-1978

Physical Description: 13 cm

History /

Biographical:

The Women's Institute was founded in 1897, in Stoney Creek, Ontario by Adelaide Hoodless. By 1913, institutes were established in every Canadian province. In 1919, provincial representatives met in Winnipeg to form the Federated Women's Institute of Canada. The Women's Institute was designed to promote quality of life in rural Canada and to foster the advancement of rural women. The first Women's Institute in Manitoba was organized in 1910, in Morris, Manitoba. The Cordova Women's Institute was formed on April 28, 1961. The group met in member's homes until 1966, when it began to meet in the recently closed school. The Institute raised money for scholarships and charities by holding teas, bake sales and raffles. The group also held courses for its members to learn about various subjects of interest to rural women. The Cordova Women's Institute disbanded in 1978.

Custodial History:

This fonds was accessioned in 2002 by the McKee Archives. Prior custodial history is unknown.

Scope and Content:

Fonds contains the Cordova Women's Institute's Annual Reports from 1961-1978. It also contains the minutes from the group's meetings from 1961-1978. The financial records of the Institute from 1961-1978 are included in the fonds.

Notes: CAIN No. 202636. Description by Robyn Mitchell.

Subject Access: Joyce Cameron
Doreen Jenner
Merle Guyer
Margaret Wilson
Allison Ellis
Margaret Anstett
Lois Cameron
Dorothy Curle
Astrid Treloar
Lillian Ritchie
Eleanor Robinson
Alice Cameron
Shirley Davidson
Cordova Women's Institute
Village of Cordova
Manitoba Women's Institute
rural women
women's organization

Storage Location: 2002 accessions

Storage Range: 2002 accessions

Related Material:

Related women's institute collections in the McKee Archives include:

Manitoba Women's Institute; Minnedosa Women's Institute; Cordova Women's Institute; Clanwilliam Women's Institute; Rathwell Women's Institute; Strathclair Women's Institute; Crocus Women's Institute; Southwest A Region - Manitoba Women's Institute; Douglas Women's Institute



Crocus Women's Institute fonds

<http://archives.brandonu.ca/en/permalink/descriptions4800>

Part Of: RG 5 Western Manitoba Manuscript Collection

Description Level: Collection

Accession Number: 5-2002

GMD: textual records

Date Range: 1946-1984

Physical Description: 18 cm

History /

Biographical:

The Women's Institute was founded in 1897 in Stoney Creek, Ontario, by Adelaide Hoodless. By 1913, institutes had been established in every Canadian province. In 1919, provincial representatives met in Winnipeg to form the Federated Women's Institute of Canada. The Women's Institute was designed to promote quality of life in rural Canada and to foster the advancement of rural women. The first Women's Institute in Manitoba was organized in 1910, in Morris, Manitoba. The Crocus Women's Institute was created in the fall of 1946. The charter for the group was issued on November 25, 1946. One of the first projects of the group included sending food parcels to Britain until war rationing was discontinued. The main focus of the Institute was the local school: the Institute sponsored essay contests and provided furniture for the school. The Institute also sponsored a garden club and held a garden show for many years. Finally, the group had an annual Christmas Cheer project. The Crocus WI disbanded in 1984.

Custodial History:

This fonds was accessioned in 2002 by the McKee Archives. Prior custodial history is unknown.

Scope and Content:

Fonds contains member lists in the form of roll calls from 1946-1984. There are also Women's Institute Programs from the years 1946-1984. Fonds also includes the organization's minutes, financial records and annual reports from 1946-84, a scrapbook for the years 1946-1984, and the Certificate of Organization for the Crocus Women's Institute, dated September 5, 1950.

Notes: CAIN No. 202645

Subject Access:	Edith Mitchell Margaret Erven Evelyn Firby Edna Allen M. Johnston Irene Erven E. Crawley Florence Wilmot Dawn Erven Miss Frances Isabel McKay Mrs. Evelyn Luella Ames Crocus Women's Institute Manitoba Women's Institute rural women women's organizations scrapbooks
Storage Location:	2002 accessions
Storage Range:	2002 accessions
Related Material:	Related women's institute collections in the McKee Archives include: Manitoba Women's Institute; Minnedosa Women's Institute; Cordova Women's Institute; Clanwilliam Women's Institute; Rathwell Women's Institute; Strathclair Women's Institute; Crocus Women's Institute; Southwest A Region - Manitoba Women's Institute; Douglas Women's Institute