

S. J. McKee Archives



Brandon Machine Works

<http://archives.brandonu.ca/en/permalink/descriptions9661>

Part Of: RG 11 Lawrence Stuckey fonds

Description Level: Item

Series Number: 3.1

Item Number: 1-2002.3.1H7a

Accession Number: 1-2002

GMD: graphic

Date Range: [18-?]

Physical Description: 3 1/2" x 5"

Material Details: Negative

Custodial History:

For custodial history see the collection level description of the Lawrence Stuckey collection.

Scope and Content:

Brandon Machine Works

Notes: Architect's Drawing

[This negative was produced using a previously published image (P.E.).]

Name Access: Brandon Machine Works

Subject Access: manufactured products

factories

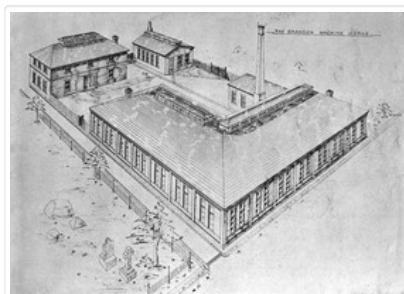
mills

Brandon Industries

Repro Restriction: The McKee Archives is the copyright holder for the Stuckey materials.

Storage Location: Lawrence Stuckey collection

Images





Brandon Machine Works

<http://archives.brandonu.ca/en/permalink/descriptions9662>

Part Of: RG 11 Lawrence Stuckey fonds

Description Level: Item

Series Number: 3.1

Item Number: 1-2002.3.1H7b

Accession Number: 1-2002

GMD: graphic

Date Range: 1939

Physical Description: 2 1/2" x 3 1/2"

Material Details: Negative

Custodial History:

For custodial history see the collection level description of the Lawrence Stuckey collection.

Scope and Content:

Brandon Machine Works

Notes: Located on the north side of the 1300 block Rosser Avenue.
This photograph is a time exposure that was taken entirely by moonlight.
From the collection of George H. Harris, Winnipeg, Man.

Name Access: Brandon Machine Works

Subject Access: manufactured products

factories

mills

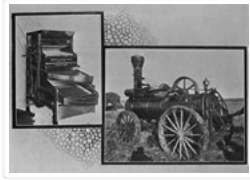
Brandon Industries

Repro Restriction: The McKee Archives is the copyright holder for the Stuckey materials.

Storage Location: Lawrence Stuckey collection

Images





Brandon Machine Works Products

<http://archives.brandonu.ca/en/permalink/descriptions9660>

Part Of: RG 11 Lawrence Stuckey fonds

Description Level: Item

Series Number: 3.1

Item Number: 1-2002.3.1H7

Accession Number: 1-2002

GMD: graphic

Date Range: 1913

Physical Description: 3 1/2" x 5"

Material Details: Negative

Custodial History:

For custodial history see the collection level description of the Lawrence Stuckey collection.

Scope and Content:

Brandon Machine Works products

Notes: Fanning mill and portable steam engine

[This negative was produced using a previously published image (P.E.).]

Name Access: Brandon Machine Works Products

Subject Access: manufactured products

mills

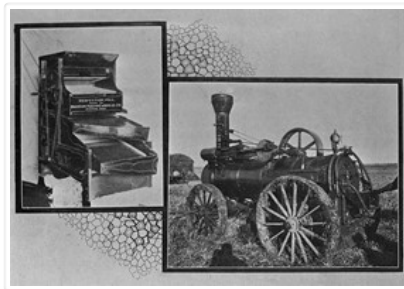
engines

Brandon Industries

Repro Restriction: The McKee Archives is the copyright holder for the Stuckey materials.

Storage Location: Lawrence Stuckey collection

Images



Brandon Sand & Brick Co.

<http://archives.brandonu.ca/en/permalink/descriptions9656>

Part Of: RG 11 Lawrence Stuckey fonds

Description Level: Item

Series Number: 3.1

Item Number: 1-2002.3.1H3

Accession Number: 1-2002
GMD: graphic
Date Range: [between 1904 and 1920]
Physical Description: 3 1/2" x 5"
Material Details: Negative

History /

Biographical:

Brandon Sand & Brick Co. was better known as "Samson's Brick" for owner-proprietor Samson.

Plant located at 29th Street & Princess Avenue; Offices located in Smith Block.

Used Huennekes (German) system, whereby dried sand was mixed and ground with lime in a tube mill as water was added to slake the lime. The mixture was formed into bricks in a press, then steamed in a cylinder 6 ft. in diameter and 62 ft. long for 10 hours, under pressure of 120 psi, to form a compound like cement. Bricks were ready for use when taken from cylinder. (Ritchie, T. Canada Builds. pp. 219)

In addition to the Belvedere Apartments, many houses are faced with this brick. The rear of the 9th St. MTS building and others downtown buildings were also formed of it. Also used in interior walls of Prince Edward Hotel, Alexander School and many other buildings that were faced with more expensive brick. The product was so good, the plant's demise was likely caused by the post-WWI depression.(LAS)

Custodial History:

For custodial history see the collection level description of the Lawrence Stuckey collection.

Scope and Content:

Brandon Sand & Brick Co. (Samson's Brick)

Notes: Great Northern Railway enginehouse visible in background [Fred McGuinness collection (20-2009)].

Name Access: Brandon Sand & Brick Co.
Samson's Brick

Subject Access: industrial minerals
lime
sand
bricks
Brandon Industries

Repro Restriction: The McKee Archives is the copyright holder for the Stuckey materials.

Storage Location: Lawrence Stuckey collection

Images





Canadian Occidental Chemicals

<http://archives.brandonu.ca/en/permalink/descriptions9705>

Part Of: RG 11 Lawrence Stuckey fonds

Creator: L.A. Stuckey

Description Level: Item

Series Number: 3.1

Item Number: 1-2002.3.1HA15(1)

Accession Number: 1-2002

GMD: graphic

Date Range: August 26, 1992

Physical Description: 2 1/2" x 2 1/2"

Material Details: Negative

History /

Biographical:

[Since its construction, this industrial chemical plant has been known as Hooker Chemicals, Canadian Occidental Chemicals, and Nexen Chemicals Canada. It is currently operated by Canexus Chemicals Canada. P.E. 03/07/09]

Custodial History:

For custodial history see the collection level description of the Lawrence Stuckey collection.

Scope and Content:

Canadian Occidental Chemicals

Notes: [Mr. Stuckey put two negatives in the same envelope. We have separated them and numbered them HA15(1) and HA15(2).]

Name Access: Hooker Chemicals
Canadian Occidental Chemicals

Subject Access: chemicals
industrial chemicals
Brandon Industries

Repro Restriction: The McKee Archives is the copyright holder for the Stuckey materials.

Storage Location: Lawrence Stuckey collection

Images





Canadian Occidental Chemicals

<http://archives.brandonu.ca/en/permalink/descriptions9706>

Part Of: RG 11 Lawrence Stuckey fonds

Creator: L.A. Stuckey

Description Level: Item

Series Number: 3.1

Item Number: 1-2002.3.1HA15(2)

Accession Number: 1-2002

GMD: graphic

Date Range: August 26, 1992

Physical Description: 2 1/2" x 2 1/2"

Material Details: Negative

History /

Biographical:

[Since its construction, this industrial chemical plant has been known as Hooker Chemicals, Canadian Occidental Chemicals, and Nexen Chemicals Canada. It is currently operated by Canexus Chemicals Canada. P.E. 03/07/09]

Custodial History:

For custodial history see the collection level description of the Lawrence Stuckey collection.

Scope and Content:

Canadian Occidental Chemicals

Notes: [Mr. Stuckey put two negatives in the same envelope. We have separated them and numbered them HA15(1) and HA15(2).]

Name Access: Hooker Chemicals
Canadian Occidental Chemicals

Subject Access: chemicals
industrial chemicals
Brandon Industries

Repro Restriction: The McKee Archives is the copyright holder for the Stuckey materials.

Storage Location: Lawrence Stuckey collection

Images





Cando Contracting Ltd.

<http://archives.brandonu.ca/en/permalink/descriptions13920>

Part Of: Fred McGuinness collection

Description Level: Item

Series Number: McG 9

Item Number: 20-2009.230

Accession Number: 20-2009

GMD: graphic

Date Range: c.1990

Physical Description: 5" x 3.5" (b/w)

History /

Biographical:

Cando Contracting Ltd. was found in 1978 by Gord Peters and Rick Hammond. The company began as a small rail line dismantling and salvage company operating out of Brandon, Manitoba. The company changed its name in 2013 to Cando Rail Services Ltd., which supplies railway support services (e.g., engineering and track services, industrial rail services, mechanical services, rail car storage, railway material sales, short line operations, transload services) to industry and the rail sector. The company maintains its headquarters in Brandon, Manitoba, and has regional offices located in Calgary, Edmonton, Winnipeg, Whitby, and Adel (Iowa). (Source: www.candoltd.com, accessed 05 Dec 2015)

Scope and Content:

Photograph shows Gord Peters standing in front of the rail car that forms the entrance of Cando Contracting Ltd. in Brandon, Manitoba

Notes: Negatives stored with photograph

Name Access: Cando Contracting Ltd

Gord Peters

Subject Access: contractors

Brandon business buildings & facilities after 1940

Brandon Industries

Storage Location: RG 5 photograph storage drawer 2 (hanging photos)

Arrangement:

From 20-2009 #4 plastic envelope #2; in Canada Wide Magazines Ltd. envelope post marked 03 November 1990

Images





Cargill Elevator

<http://archives.brandonu.ca/en/permalink/descriptions9703>

Part Of: RG 11 Lawrence Stuckey fonds

Creator: L.A. Stuckey

Description Level: Item

Series Number: 3.1

Item Number: 1-2002.3.1HA12

Accession Number: 1-2002

GMD: graphic

Date Range: August 4, 1991

Physical Description: 2 1/2" x 2 1/2"

Material Details: Negative

Custodial History:

For custodial history see the collection level description of the Lawrence Stuckey collection.

Scope and Content:

Cargill Elevator

Name Access: Cargill Elevator

Subject Access: businesses

Grain elevators

Brandon Industries

Repro Restriction: The McKee Archives is the copyright holder for the Stuckey materials.

Storage Location: Lawrence Stuckey collection

Images





Co-op Feed Mill

<http://archives.brandonu.ca/en/permalink/descriptions9693>

Part Of: RG 11 Lawrence Stuckey fonds

Creator: L.A. Stuckey

Description Level: Item

Series Number: 3.1

Item Number: 1-2002.3.1HA2

Accession Number: 1-2002

GMD: graphic

Date Range: January 6, 1971

Physical Description: 2 1/2" x 2 1/2"

Material Details: Negative

Custodial History:

For custodial history see the collection level description of the Lawrence Stuckey collection.

Scope and Content:

Co-op Feed Mill

Name Access: Co-op Feed Mill

Subject Access: mills

feed mills

Brandon Industries

Repro Restriction: The McKee Archives is the copyright holder for the Stuckey materials.

Location Copy: 1-2002.3.9.45

Storage Location: Lawrence Stuckey collection

Images



Cutting Ice from the Assiniboine River

<http://archives.brandonu.ca/en/permalink/descriptions9668>

Part Of: RG 11 Lawrence Stuckey fonds

Creator: L.A. Stuckey

Description Level: Item

Series Number: 3.1

Item Number: 1-2002.3.1H12(1)
Accession Number: 1-2002
GMD: graphic
Date Range: January 21, 1942
Physical Description: 2 1/2" x 2 1/2"
Material Details: Negative

History /

Biographical:

These blocks of ice were used to fill the ice houses of the Wheat City Ice Co. (located north of Rosser Avenue on the west side of 15th Street, and south of Princess Avenue on the east side of 17th Street), the CPR icehouses (at the station and 3rd St. & Assiniboine Ave), and the CNR icehouse (at Forth Street and McTavish Avenue). In addition, large quantities of ice were shipped to smaller towns in railcars (usually old refrigerator cars).

Custodial History:

For custodial history see the collection level description of the Lawrence Stuckey collection.

Scope and Content:

Cutting ice from the Assiniboine River

Notes: This is one of five images that show the method in which ice is cut into blocks and loaded onto sleighs or trucks. Note the large draft horses still in use at this date.

[Mr. Stuckey put five negatives into the same envelope. We have separated them and numbered them H12(1) to H12(5).]

Additional information provided by the Fred McGuinness collection (20-2009).

Name Access: Cutting Ice from the Assiniboine River

Subject Access: ice
icehouses

Brandon Industries

Repro Restriction: The McKee Archives is the copyright holder for the Stuckey materials.

Storage Location: Lawrence Stuckey collection

Images



Cutting Ice from the Assiniboine River



<http://archives.brandonu.ca/en/permalink/descriptions9669>

Part Of: RG 11 Lawrence Stuckey fonds

Creator: L.A. Stuckey

Description Level: Item

Series Number: 3.1

Item Number: 1-2002.3.1H12(2)

Accession Number: 1-2002

GMD: graphic

Date Range: January 21, 1942

Physical Description: 2 1/2" x 2 1/2"

Material Details: Negative

History /

Biographical:

These blocks of ice were used to fill the ice houses of the Wheat City Ice Co. (located north of Rosser Avenue on the west side of 15th Street, and south of Princess Avenue on the east side of 17th Street), the CPR icehouses (at the station and 3rd St. & Assiniboine Ave), and the CNR icehouse (at Forth Street and McTavish Avenue). In addition, large quantities of ice were shipped to smaller towns in railcars (usually old refrigerator cars).

Custodial History:

For custodial history see the collection level description of the Lawrence Stuckey collection.

Scope and Content:

Cutting ice from the Assiniboine River

Notes: This is one of five images that show the method in which ice is cut into blocks and loaded onto sleighs or trucks. Note the large draft horses still in use at this date.

[Mr. Stuckey put five negatives into the same envelope. We have separated them and numbered them H12(1) to H12(5).]

Additional information provided by the Fred McGuinness collection (20-2009).

Name Access: Cutting Ice from the Assiniboine River

Subject Access: ice

icehouses

Brandon Industries

Repro Restriction: The McKee Archives is the copyright holder for the Stuckey materials.

Storage Location: Lawrence Stuckey collection

Images





Cutting Ice from the Assiniboine River

<http://archives.brandonu.ca/en/permalink/descriptions9670>

Part Of: RG 11 Lawrence Stuckey fonds

Creator: L.A. Stuckey

Description Level: Item

Series Number: 3.1

Item Number: 1-2002.3.1H12(3)

Accession Number: 1-2002

GMD: graphic

Date Range: January 21, 1942

Physical Description: 2 1/2" x 2 1/2"

Material Details: Negative

History /

Biographical:

These blocks of ice were used to fill the ice houses of the Wheat City Ice Co. (located north of Rosser Avenue on the west side of 15th Street, and south of Princess Avenue on the east side of 17th Street), the CPR icehouses (at the station and 3rd St. & Assiniboine Ave), and the CNR icehouse (at Forth Street and McTavish Avenue). In addition, large quantities of ice were shipped to smaller towns in railcars (usually old refrigerator cars).

Custodial History:

For custodial history see the collection level description of the Lawrence Stuckey collection.

Scope and Content:

Cutting ice from the Assiniboine River

Notes: This is one of five images that show the method in which ice is cut into blocks and loaded onto sleighs or trucks. Note the large draft horses still in use at this date.

[Mr. Stuckey put five negatives into the same envelope. We have separated them and numbered them H12(1) to H12(5).]

Additional information provided by the Fred McGuinness collection (20-2009).

Name Access: Cutting Ice from the Assiniboine River

Subject Access: ice

icehouses

Brandon Industries

Repro Restriction: The McKee Archives is the copyright holder for the Stuckey materials.

Storage Location: Lawrence Stuckey collection

Images



Cutting Ice from the Assiniboine River

<http://archives.brandonu.ca/en/permalink/descriptions9671>

Part Of: RG 11 Lawrence Stuckey fonds

Creator: L.A. Stuckey

Description Level: Item

Series Number: 3.1

Item Number: 1-2002.3.1H12(4)

Accession Number: 1-2002

GMD: graphic

Date Range: January 21, 1942

Physical Description: 2 1/2" x 2 1/2"

Material Details: Negative

History /

Biographical:

These blocks of ice were used to fill the ice houses of the Wheat City Ice Co. (located north of Rosser Avenue on the west side of 15th Street, and south of Princess Avenue on the east side of 17th Street), the CPR icehouses (at the station and 3rd St. & Assiniboine Ave), and the CNR icehouse (at Forth Street and McTavish Avenue). In addition, large quantities of ice were shipped to smaller towns in railcars (usually old refrigerator cars).

Custodial History:

For custodial history see the collection level description of the Lawrence Stuckey collection.

Scope and Content:

Cutting ice from the Assiniboine River

Notes:

This is one of five images that show the method in which ice is cut into blocks and loaded onto sleighs or trucks. Note the large draft horses still in use at this date.

[Mr. Stuckey put five negatives into the same envelope. We have separated them and numbered them H12(1) to H12(5).]

Additional information provided by the Fred McGuinness collection (20-2009).

Name Access: Cutting Ice from the Assiniboine River

Subject Access: ice
icehouses
Brandon Industries

Repro Restriction: The McKee Archives is the copyright holder for the Stuckey materials.

Storage Location: Lawrence Stuckey collection

Images



Cutting Ice from the Assiniboine River

<http://archives.brandonu.ca/en/permalink/descriptions9672>

Part Of: RG 11 Lawrence Stuckey fonds

Creator: L.A. Stuckey

Description Level: Item

Series Number: 3.1

Item Number: 1-2002.3.1H12(5)

Accession Number: 1-2002

GMD: graphic

Date Range: January 21, 1942

Physical Description: 2 1/2" x 2 1/2"

Material Details: Negative

History /

Biographical:

These blocks of ice were used to fill the ice houses of the Wheat City Ice Co. (located north of Rosser Avenue on the west side of 15th Street, and south of Princess Avenue on the east side of 17th Street), the CPR icehouses (at the station and 3rd St. & Assiniboine Ave), and the CNR icehouse (at Forth Street and McTavish Avenue). In addition, large quantities of ice were shipped to smaller towns in railcars (usually old refrigerator cars).

Custodial History:

For custodial history see the collection level description of the Lawrence Stuckey collection.

Scope and Content:

Cutting ice from the Assiniboine River

Notes: This is one of five images that show the method in which ice is cut into blocks and loaded onto sleighs or trucks. Note the large draft horses still in use at this date.

[Mr. Stuckey put five negatives into the same envelope. We have separated them and numbered them H12(1) to H12(5).]

Additional information provided by the Fred McGuinness collection (20-2009).

Name Access: Cutting Ice from the Assiniboine River

Subject Access: ice
icehouses
Brandon Industries

Repro Restriction: The McKee Archives is the copyright holder for the Stuckey materials.

Storage Location: Lawrence Stuckey collection

Images





Early MacArthur & Son Ltd. Truck

<http://archives.brandonu.ca/en/permalink/descriptions9686>

Part Of: RG 11 Lawrence Stuckey fonds

Description Level: Item

Series Number: 3.1

Item Number: 1-2002.3.1H21

Accession Number: 1-2002

GMD: graphic

Date Range: [194-?]

Physical Description: 3 1/2" x 5"

Material Details: Negative

Custodial History:

For custodial history see the collection level description of the Lawrence Stuckey collection.

Scope and Content:

An early MacArthur & Son Ltd. truck

Notes: One of their first semi-trailers

Photo courtesy of Dave MacArthur

Name Access: MacArthur & Son Ltd.

MacArthur Transportation Co. Ltd.

Subject Access: businesses

Transportation

trucking

Brandon Industries

Repro Restriction: The McKee Archives is the copyright holder for the Stuckey materials.

Storage Location: Lawrence Stuckey collection

Images





Empire Brewing Co.

<http://archives.brandonu.ca/en/permalink/descriptions9687>

Part Of: RG 11 Lawrence Stuckey fonds

Description Level: Item

Series Number: 3.1

Item Number: 1-2002.3.1H22

Accession Number: 1-2002

GMD: graphic

Date Range: 1912

Physical Description: 3 1/2" x 5"

Material Details: Negative

Custodial History:

For custodial history see the collection level description of the Lawrence Stuckey collection.

Scope and Content:

Empire Brewing Company Ltd.

Notes: Photo copied from Winnipeg Saturday Post, June 15, 1912

Name Access: Empire Brewing Co.

Empire Brewery

Subject Access: businesses

breweries

brewing

alcoholic beverages

beer

Brandon Industries

Repro Restriction: The McKee Archives is the copyright holder for the Stuckey materials.

Location Copy: 1-2002.3.9.99

Storage Location: Lawrence Stuckey collection

Images





Empire Brewing Co. (First Plant)

<http://archives.brandonu.ca/en/permalink/descriptions9688>

Part Of: RG 11 Lawrence Stuckey fonds

Description Level: Item

Series Number: 3.1

Item Number: 1-2002.3.1H22a

Accession Number: 1-2002

GMD: graphic

Date Range: [before 1900]

Physical Description: 3 1/2" x 5"

Material Details: Negative

Custodial History:

For custodial history see the collection level description of the Lawrence Stuckey collection.

Scope and Content:

Empire Brewing Company Ltd. (first plant)

Notes: [This negative was produced using a previously published image. P.E. 02/07/09]

Name Access: Empire Brewing Co.

Empire Brewery

Subject Access: businesses

breweries

brewing

alcoholic beverages

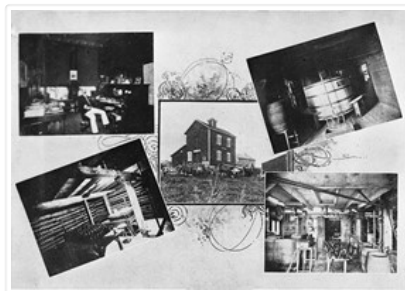
beer

Brandon Industries

Repro Restriction: The McKee Archives is the copyright holder for the Stuckey materials.

Storage Location: Lawrence Stuckey collection

Images





Feed-Rite Mill

<http://archives.brandonu.ca/en/permalink/descriptions9683>

Part Of: RG 11 Lawrence Stuckey fonds

Creator: L.A. Stuckey

Description Level: Item

Series Number: 3.1

Item Number: 1-2002.3.1H19

Accession Number: 1-2002

GMD: graphic

Date Range: October 28, 1977

Physical Description: 2 1/2" x 2 1/2"

Material Details: Negative

Custodial History:

For custodial history see the collection level description of the Lawrence Stuckey collection.

Scope and Content:

Feed-Rite feed mill

Notes: Located near 17th Street East, on the CNR tracks

Name Access: Feed-Rite Mill

Subject Access: mills

feed mills

Brandon Industries

Repro Restriction: The McKee Archives is the copyright holder for the Stuckey materials.

Storage Location: Lawrence Stuckey collection

Images





Feed-Rite Mill

<http://archives.brandonu.ca/en/permalink/descriptions9684>

Part Of: RG 11 Lawrence Stuckey fonds

Creator: L.A. Stuckey

Description Level: Item

Series Number: 3.1

Item Number: 1-2002.3.1H19a

Accession Number: 1-2002

GMD: graphic

Date Range: August 9, 1991

Physical Description: 2 1/2" x 2 1/2"

Material Details: Negative

Custodial History:

For custodial history see the collection level description of the Lawrence Stuckey collection.

Scope and Content:

Feed-Rite feed mill

Notes: Located near 17th Street East, on the CNR tracks

Name Access: Feed-Rite Mill

Subject Access: mills

feed mills

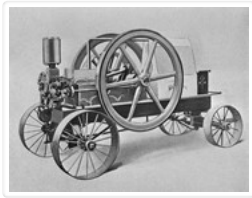
Brandon Industries

Repro Restriction: The McKee Archives is the copyright holder for the Stuckey materials.

Storage Location: Lawrence Stuckey collection

Images





Gas Engine

<http://archives.brandonu.ca/en/permalink/descriptions9659>

Part Of: RG 11 Lawrence Stuckey fonds

Description Level: Item

Series Number: 3.1

Item Number: 1-2002.3.1H6

Accession Number: 1-2002

GMD: graphic

Date Range: 1913

Physical Description: 3 1/2" x 5"

Material Details: Negative

Custodial History:

For custodial history see the collection level description of the Lawrence Stuckey collection.

Scope and Content:

Gas engine made in Brandon by Manitoba Engines Limited

Notes: [This negative was produced using a previously published image from "Brandon in the year 1913". P.E.]

Name Access: Gas Engine

Subject Access: manufactured products

engines

Brandon Industries

Repro Restriction: The McKee Archives is the copyright holder for the Stuckey materials.

Storage Location: Lawrence Stuckey collection

Images

