

S. J. McKee Archives



8th Street and Rosser Avenue intersection

<http://archives.brandonu.ca/en/permalink/descriptions13768>

| | |
|-----------------------|---|
| Part Of: | Fred McGuinness collection |
| Description Level: | Item |
| Series Number: | McG 9 |
| Item Number: | 20-2009.79 |
| Accession Number: | 20-2009 |
| GMD: | graphic |
| Date Range: | [1906] |
| Physical Description: | 4.25" x 3.25" (b/w) |
| Material Details: | on matting |
| Physical Condition: | Photograph is scratched and has been glued to a backing board that has warped over time |

Scope and Content:

Photograph shows street view of the northeast intersection of the 000 block of 8th Street and Rosser Avenue. Horse and buggies are parked along the east side of 8th Street. Businesses on the east side of 8th Street from Pacific to Rosser Avenues are clearly visible and include: a Lunch Room (likely Aagaard's Lunch Counter), the Hotel Imperial Annex, Liverpool House (a boarding house), R.S. Thompson and Company Real Estate Office (Land Office), a barber shop (likely J. Coulter's), Frank Gowen photography studio, and Fleming's Drug Store. A possible street fair is in progress on Rosser Avenue. One man is standing on a soap box and is surrounded by a crowd in the middle of 8th Street. Another man can be seen standing behind a booth on the northwest street corner. Building construction appears to be happening on the west corner of 8th Street and Rosser Avenue.

Notes: Writing on the front of the photograph matting reads: 297. One photograph (20-2009.80) is glued below the photograph. Another photograph is glued on the reverse side. Page appears to be from a photo album.

Name Access: Fleming Block
Fleming's Drug Store
Frank Gowen Photographer
Liverpool House
Hotel Imperial Annex
8th Street
Rosser Avenue
Aagaard's
R.S. Thompson
8th Street Bridge

Subject Access: Street scene
 Transportation
 downtown
 storefronts
 store exteriors
 hotels
 boarding houses
 barber shops
 restaurants
 druggists
 photographers
 bridge
 horses
 dogs
 buggies

Storage Location: RG 5 photograph storage drawer 2 (hanging photos)

Images



8th Street and Rosser Avenue intersection

<http://archives.brandonu.ca/en/permalink/descriptions13701>

Part Of: Fred McGuinness collection

Description Level: Item

Series Number: McG 9

Item Number: 20-2009.11

Accession Number: 20-2009

GMD: graphic

Date Range: [1906]

Physical Description: 6.5" x 4.25" (b/w)

Material Details: on matting

Physical Condition: Photograph is scratched and has been glued to a backing board that has warped over time

Scope and Content:

Photograph shows street view of intersection of the 000 block of 8th Street and Rosser Avenue. Horse and buggies are travelling on both roads. Businesses on the east side of 8th Street from Pacific to Rosser Avenues are clearly visible and include: a Lunch Room (likely Aagaard's Lunch Counter), the Hotel Imperial Annex, Liverpool House (a boarding house), R.S. Thompson and Company Real Estate Office (Land Office), a barber shop (likely J. Coulter's), Frank Gowen photography studio, and Fleming's Drug Store. A possible street fair is in progress on Rosser Avenue. One man is surrounded by a crowd adjacent to the Fleming Block, another man stands on a soap box in the middle of the intersection, while a third man is standing behind a booth. Building construction appears to be happening on the west corner of 7th Street and Rosser Avenue.

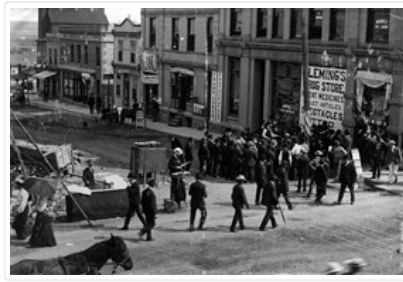
Notes: Writing on the front of the photograph matting reads: 296. One photograph (20-2009.12) is glued above and two others are glued on the reverse side. Page appears to be from a photo album.

Name Access: Fleming Block
Fleming's Drug Store
Frank Gowen Photographer
Liverpool House
Hotel Imperial Annex
8th Street
Rosser Avenue
Aagaard's
R.S. Thompson
8th Street Bridge

Subject Access: Street scene
Transportation
downtown
storefronts
store exteriors
hotels
boarding houses
barber shops
restaurants
druggists
photographers
bridge
horses
dogs
land agents

Storage Location: RG 5 photograph storage drawer 2 (hanging photos)

Images



18th International Rally - Wally Byam Caravan Club International

<http://archives.brandonu.ca/en/permalink/descriptions10195>

Part Of: RG 12 Brandon and Area Photograph Collection

Description Level: Item

Series Number: 6

Item Number: BAPC 6.1

GMD: graphic

Date Range: 1975

Publication: Printed by Leech Printing Ltd., Brandon, MB

Physical Description: 8.5" x 11" (b/w)

Scope and Content:

Aerial photograph of the 18th International Rally of the Wally Byam Caravan Club International held in Brandon, MB at the Keystone Centre.

Name Access: Wally Byam Caravan Club International

Keystone Centre

Subject Access: touring

aerial photographs

Storage Location: BAPC photograph drawer

Images





<http://archives.brandonu.ca/en/permalink/descriptions4309>

Part Of: RG 3 A.E. McKenzie Company fonds
Description Level: Fonds
GMD: multiple media
Date Range: 1887-1996; predominantly 1910-1974
Physical Description: 7.47 m of textual records
500 photographs

History /

Biographical:

The A.E. McKenzie Seed Co. Ltd. originated with the McKenzie family Flour, Grain and Seed business, started by F. B. McKenzie in the early 1880's. When F. B. McKenzie passed away in 1896, his son, Albert Edward McKenzie, assumed control of the company, and renamed it The Brandon Seed House. With its main office and plant in Brandon, Manitoba, the company specialized in the production and sale of field seeds and service exclusively to seed buyers in the prairie provinces and British Columbia. In later years, a complete line of products including garden seeds, lawn grass, and other allied lines was developed for sale across Canada.

In 1906, the company underwent a change of name when A. E. McKenzie determined that the growth of the country demanded a larger seed institute than could be managed by one man. As a result, the company was incorporated under provincial statutes and the federal Joint Stock Companies Act as A. E. McKenzie Seed Co. Ltd., and new personnel were hired.

Under the Joint Stock Companies Act, A.E. McKenzie Seed Co. Ltd. was required to elect a Board of Directors of not less than three, and not more than nine individuals. Only shareholders of the company were eligible for election, and election was to take place yearly with each shareholder entitled to as many votes as shares owned in the company. The Act also dictated that the directors were, from time to time, to elect from among themselves, a president of the company. They were also able to appoint and remove all other officers of the company and to create company by-laws. The directors were not obliged to pay any dividend on shares if the company should become insolvent. Under the Act, the stock of the company was deemed a personal estate and was only transferable as such. In addition, the company could acquire, hold, and transfer real estate, and was required to submit annual statements.

A. E. McKenzie was elected President of the newly constituted company. For the remainder of his natural life he remained in this position and supervised the operation of the company. S. A. Bradford, who was given responsibility for various company departments, filled the position of General Manager. H. L. Patmore became the Vice-President, overseeing the nursery business, while W. A. McCracken was put in charge of the warehouse stock, and shipping department. McCracken also supervised the mail order department.

The Company was initially comprised of three divisions: The Brandon Seed House, Brandon Nurseries, and Brandon Greenhouses. Each division was registered under Dominion Patents. Later, the company was divided into Retail Mail Order, Wholesale and Commission Packet Trade divisions. It also undertook some export business.

By registering the divisions of the company under federal legislation affecting trademarks and industrial designs, McKenzie and the Board, were able to register both the company's trademarks and to protect the company's industrial techniques. The company could thus patent the methods and processes of its operations so that no other individual or business could duplicate them.

Located at 30 9th Street, the head office and plant of A.E. McKenzie Seed Co. Ltd. housed all the facilities and staff of the company, with the exception of the regional sales offices and warehouses. The business of the A. E. McKenzie Co. Ltd. was conducted from a frame warehouse until the current McKenzie building was constructed on the same site after a fire

destroyed the original premises. Designed by architect Thomas Sinclair, and built by the Brandon Construction Company, the new building opened in 1911. In time, The A. E. McKenzie Co. Ltd. came to be known as Western Canada's Greatest Seed House.

During the 1930's, before a new building was erected in 1945, the A. E. McKenzie Co. occupied space at five different locations in Brandon, including the Massey Harris Building, the International Harvester Building and the Security Building. The last of these premises was destroyed by fire in 1972. As a result of its proximity to the Security Building, the main McKenzie Building also suffered heavy fire and water damage. A. E. McKenzie Co. Ltd. also utilized a warehouse on the north side of Pacific Avenue alongside the Canadian Pacific Railway tracks between 5th and 6th streets. This building and its contents were destroyed by fire (1946). In May of 1949, the company purchased and erected a Quonset structure on the west side of 15th Street between Rosser and Pacific Avenues.

In 1908, the first branch of the A. E. McKenzie Seed Co. Ltd. was established at Calgary. In the following sixteen years, additional branches were established in Edmonton and Saskatoon (1923), Moose Jaw, Toronto (1934) and Winnipeg (1935). Both the Edmonton and Saskatoon branches were seasonal, operating for a four-month period, March to June inclusive. Business in the Maritime Provinces of Prince Edward Island, Nova Scotia and New Brunswick further extended the company's operations by the mid 1940's. In 1946, the company purchased property in Gilbert Plains, Manitoba, 120 miles north of Brandon. This purchase enabled the company to handle larger quantities of Sweet Clover, a popular crop that was grown in the surrounding area. Additional offices were opened in Vancouver and Quebec City in rented premises by the early 1960's.

In the years 1944-1945, the McKenzie Foundation was created. Through the Foundation, arrangements were put in place to transfer shares of the company to the Manitoba Government for the benefit of higher education, specifically Brandon College. In return for this gift, which included 90% of all capital resources of the company together with all of the income earned each year, except for the amount retained annually to ensure sufficient operating capital, the A.E. McKenzie Co. Ltd. received exemption from paying Corporate Tax.

Prior to the establishment of the McKenzie Foundation, in 1945, the National Trust for the benefit of the College held the shares of McKenzie Seeds. On April 7, 1945 the Manitoba Legislature passed legislation whereby A. E. McKenzie retained effective management control of his company, but 1031 shares out of 1145 issued shares were gifted to the Provincial Government. In return, the government agreed that all financial benefits from the shares would go to Brandon College through the A. E. McKenzie Foundation. When Mr. McKenzie passed away in 1964, the primary responsibility of appointing the Board of Directors for McKenzie Seeds passed to the Provincial government.

The remaining 114 shares of the Company were turned over to the Crown on July 16, 1975 in accordance with an agreement between Brandon University, A. E. McKenzie Co. Ltd. and the Manitoba government. The same agreement also turned the McKenzie Foundation over to Brandon University. Therefore, since 1975 the crown has held all shares of the McKenzie Co. through the Province of Manitoba.

A.E. McKenzie died on September 25, 1964 at the age of 94 and was succeeded as President of the company by J. Lasby Lowes. When Mr. Lowes retired in 1968, A. R. Swanson was appointed by the government to fill the position and was responsible for all operations of the company under a Board of Directors comprised mainly of appointees of the government. It has proven impossible to establish a complete list of those individuals who held the positions of President/General Manager of McKenzie Seeds after 1964. A partial account is as follows: Anthony J. Maruca became President of A. E. McKenzie Co. Ltd. in 1972. In 1975, the Board of Directors appointed William Moore General Manager, creating a new position to relieve the President of the company from management of plant operations. At the same time, Pat Kelleher was named new interim President. Following the resignation of Kelleher, William

Rehner was named new interim President. Following the resignation of Rehner, William Moore assumed the role of President as well. Moore left the company in the early 1980s. He was later convicted of criminal misconduct as President of the company. Keith Guelpa became President/General Manager in the mid 1980's; Raymond West was his successor.

Beginning in 1969, the A. E. McKenzie Seed Co. Ltd. began phasing out the Field Seed division of their company, including business related to forage crops and cereals. Seed cleaning equipment located in Brandon and the company's Calgary and Toronto cleaning plants was sold. The Company concentrated its resources on the production and sale of vegetable and flower seeds, and lawn and turf grasses. It acted as a wholesaler and conducted business through chain stores, grocery, hardware and general stores.

Late in 1971, A. E. McKenzie Co. Ltd. purchased its largest competition in packaged seeds - Steele Briggs Seed Co. from Maple Leaf Mills Inc. for two million dollars. At the time of the acquisition the company changed its name to A. E. McKenzie Co. - Steele Briggs Seeds, in order to benefit from the favorable reputation held by Steele Briggs Seeds across Canada. In the early 1970s, the acquisition of Brett-Young Seeds Ltd., a Winnipeg company that dealt exclusively in the production and sale of field seed, brought the A. E. McKenzie Co. back into the field seed market.

In 1994 the Manitoba Government sold the A.E. McKenzie Seed Co. Ltd. to Regal Greetings and Gifts, Canada's largest non-retail mail-order catalogue company, which is owned by MDC Corporation of Toronto.

In 2001, McKenzie Seeds is Canada's leading supplier of packaged seeds and related gardening products. It is divided into a Retail Consumer Products division which features well known seed brands including McKenzie Seeds, Pike Seeds and Thompson & Morgan Seeds from England. As well, this division also carries a complete range of lawn seeds and perishables. It also continues to ship the seed racks invented by A.E. McKenzie to numerous retail stores. The second division, Direct Mail, consists of the McFayden and McConnell catalogues which reach over 500,000 Canadian homes each year.

Custodial History:

Following the sale of the A.E. McKenzie Seed Co. Ltd. to Regal Greetings and Gifts, the records of McKenzie Seeds and its subsidiaries were retained in the McKenzie Plant on 9th Street. In April of 1997, the records were transferred to the McKee Archives at Brandon University. Because the company was a crown corporation, the records of McKenzie Seeds belonged to the Province of Manitoba and might have been placed in the Provincial Archives. However, Provincial Archivist Gordon Dodds permitted the retention of the records in Brandon at the S. J. McKee Archives. The minutes of the Board of Directors, previously transferred to the Provincial Archives, remain in Winnipeg. Until 1960 these minutes, by-laws of the Company, and the letters patent of incorporation (April 7, 1906) were in the possession of the Company's lawyers, Johnson, Garson, Forrester, Davidson, & Steen.

Scope and Content:

The fonds consists of textual records, photographs and artifacts from A.E. McKenzie Seed Co. Ltd. The textual records include minutes, documents, financial records, administrative records, by-laws, legal records, catalogues, sales literature, seed packets, newspaper clippings, appraisals, publications, scrapbooks and miscellaneous sections.

In addition, some of the records within the fonds relate to the operations of McKenzie subsidiaries -- Brett-Young Seeds, Steele-Briggs Seeds, Pike & Co. and McFayden Seeds -- and various properties owned by McKenzie Seeds.

Fonds contains approximately 500 photographs. These depict the operations and employees of McKenzie Seeds and the seed industry in general. Artifacts contained in the fonds include blueprints, newspaper clippings, copper printing plates, seed bags and plaques.

Fonds also includes an artificially created series of records dealing with Brandon College Inc., the A.E. McKenzie Foundation, the Brandon Allied Arts Council and the Brandon Board of Trade. These records stand outside the provenance of the McKenzie Seed Co.

Of particular interest within the textual records are the transcripts of various features of the company's history as dictated, researched and recalled by its second President/General Manager, J. Lasby Lowes. The fonds also contains a collection of company catalogue which is almost complete. Outside of the seed industry, the records dealing with both Brandon College Inc. and the McKenzie Foundation are significant records relating to the history of Brandon College/University and the City of Brandon.

Notes: Description written by Christy Henry (2001).

Name Access: A.E. McKenzie
J. Lasby Lowes
Irene Cullen
Joseph Airey
Alan R. Mundie
Sandy Black
Brett-Young Seeds/Sabetha
McFayden Seeds
Steele-Briggs Seed Co
Pike & Co
Davidson & Gowen
Davidson Studio
Frank Gowen
Dean Photo Service
Jerrett's Photo-Art Studio/Jerrett's Photo Service
Crawford Drug Store
Leech Printing Ltd
Eastman Photographic Materials Ltd

| | |
|--------------------|--|
| Subject Access: | Seed Industry Seed Catalogues Brandon Business Seed Photographs Brandon Photographs Seed Packets Agriculture Women Workers Labour Relations A.E. McKenzie J. Lasby Lowes A.R. Swanson William Moore Anthony J. Maruca Pat Kelleher Keith Guelpa Raymond West Brett-Young Seeds Sabetha Steele Briggs Seed Co Pike & Co McFayden Seeds Seed Marketing Co Brandon Board of Trade Brandon Allied Arts Council McKenzie Foundation Regal Greetings and Gifts |
| Repro Restriction: | Because the A.E. McKenzie Seed Co. Ltd. was a crown corporation, the records in the fonds are subject to the Freedom of Information and Protection of Privacy Act (FIPPA). |
| Storage Location: | RG 3 A.E. McKenzie Company fonds |
| Related Material: | Additional records regarding A.E. McKenzie Seed Co. Ltd. are housed at the Provincial Archives of Manitoba. In order to gain access to these records it is necessary to contact the Archives of Manitoba. |
| Arrangement: | RG 3 A.E. McKenzie Seed Co. Ltd. Fonds McS 1 Board of Directors 1.1 Documents 1.2 Minutes/Meetings 1.3 Management Consultant Reports 1.4 Miscellaneous 1.5 Financial Records McS 2 Office of the President/General Manager 2.1 A.E. McKenzie 2.2 J. Lasby Lowes 2.3 Comptroller 2.4 Properties |

- 2.5 Marketing
- 2.6 Reference Library
- 2.7 Miscellaneous Publications/Correspondence

McS 3 Acquisitions

- 3.1 Brett-Young Seeds/Sabetha
- 3.2 Steele-Briggs Seed Co.
- 3.3 Pike & Co.
- 3.4 McFayden Seeds

McS 4 Seed Marketing Co.

McS 5 Photographs

- 5.1 McKenzie Seed Co. Ltd. Executives
- 5.2 Construction at McKenzie Seed Co. Brandon (two files)
- 5.3 Exterior Photographs of the A. E. McKenzie Co. Building
- 5.4 McKenzie Seed Co. Plant Operations and Workers (2 files)
- 5.5 McKenzie Seed Co. Equipment and Plant - Head Office 1983
- 5.6 McKenzie Seed Co. Field Operations and Workers
- 5.7 McKenzie Seed Co. Strike 1944
- 5.8 Fires at McKenzie Seed Co. 1910, 1945, 1972
- 5.9 McKenzie Seed Co. Centennial Exhibition 1996
- 5.10 Miscellaneous McKenzie Seed Co. Photographs
- 5.11 People Connected to McKenzie Seed Co.
- 5.12 Princess Anne's Visit to McKenzie Seed Co. 1982
- 5.13 Onion Set Production Book
- 5.14 Irene Cullen Photographs - McKenzie Seeds Employee Photos
- 5.15 Josiph Airey Photographs - McKenzie Product Photos
- 5.16 Alan R. Mundie Seed Production Photographs
- 5.17 Steele Robertson/Steele Briggs Seeds Photographs
- 5.18 Seed Packet Display Units Photographs
- 5.19 Product Photographs
- 5.20 Parade Photographs
- 5.21 Oversized Photographs
 - 5.21.1 Drawer #1: Executive Photographs
 - 5.21.2 Drawer #2: Office and Equipment/Plant Photographs
 - 5.21.3 Drawer #3: Miscellaneous Oversized Photographs
 - 5.21.4 Drawer #4: Artifacts

McS 6 Miscellaneous

- 6.1 Centennial Exhibition
- 6.2 Miscellaneous Publications
- 6.3 Scrapbooks

MG 1 A.E. McKenzie Fonds

- 1.1 Brandon College Inc.
- 1.2 McKenzie Foundation
- 1.3 Brandon Allied Arts Council
- 1.4 Brandon Board of Trade
- 1.5 Miscellaneous



Aerial view: Brandon College

<http://archives.brandonu.ca/en/permalink/descriptions594>

Part Of: Brandon University Photograph collection

Description Level: Item

Series Number: 2.1

Item Number: BUPC 2.1.2

GMD: graphic

Date Range: [fall 1964?]

Physical Description: 5" x 4" (b/w)

Scope and Content:

Brandon College looking south from 19th Street. Photograph was taken after Flora Cowan Hall was built but before construction of the Education Building.

Subject Access: aerial photographs
campus photographs
campus buildings
Brandon streets

Images





Aerial view: Brandon College from 23rd Street

<http://archives.brandonu.ca/en/permalink/descriptions602>

Part Of: Brandon University Photograph collection

Description Level: Item

Series Number: 2.1

Item Number: BUPC 2.1.9

GMD: graphic

Date Range: [1963-1966]

Physical Description: 5" x 4" (b/w)

Scope and Content:

Image is looking east northeast from approximately the 300 block of 23rd Street between Lorne and Louise Avenues. Photograph shows the Brandon College campus after the opening of the original Music Building in 1963, but before the construction of the Education Building in 1966. A number of house on the 300 blocks of 22nd and 21st Streets are visible in the foreground, with the A.E. McKenzie Seed Co., the Prince Edward Hotel and various grain elevators on the horizon.

Subject Access: aerial photographs
campus photographs
campus buildings
Brandon streets
Grain elevators

Images





Aerial view - Brandon College looking southwest

<http://archives.brandonu.ca/en/permalink/descriptions601>

Part Of: Brandon University Photograph collection

Description Level: Item

Series Number: 2.1

Item Number: BUPC 2.1.8

GMD: graphic

Date Range: [1963-1966]

Physical Description: 5" x 4" (b/w)

Scope and Content:

Image shows the Brandon College campus from 17th Street looking southwest. The photo was taken after the completion of the original Music Building in 1963, but construction of the Education Building. Also visible are a number of properties on the 200 block of 18th Street and the 200 block of 20th Street.

Subject Access: aerial photographs
campus photographs
campus buildings
Brandon streets

Images





Aerial view: Brandon University campus

<http://archives.brandonu.ca/en/permalink/descriptions2576>

Part Of: Brandon University Photograph Collection

Description Level: Item

Series Number: 9

Item Number: BUPC 9.36

GMD: graphic

Date Range: September 21, 1999

Physical Description: 11" x 14" (colour)

History /

Biographical:

The photograph was taken for the Centennial of Brandon College/University.

Scope and Content:

Aerial photograph taken looking southwest from approximately the northeast corner of Princess Avenue and 17th Street. The entire campus, as well as a number of residential streets are visible.

Notes: Negative is located with the photograph

Subject Access: campus buildings
aerial photographs
aerial photography
aerial views
cityscapes

Storage Range: Oversized drawer 4

Images





Aerial view - Brandon University campus

<http://archives.brandonu.ca/en/permalink/descriptions7989>

Part Of: Brandon University Photograph collection
Creator: Photograph commissioned by Brandon University and taken by Yourview Aerial Scenics Ltd.

Description Level: Item
Series Number: 2.1
Item Number: BUPC 2.1.55
GMD: graphic
Date Range: c. 2000
Physical Description: 6" x 4" (colour)

Scope and Content:

View is southwest from approximately 16th Street between Princess and Rosser Avenues. Photograph shows the Brandon University campus, as well as surrounding residential blocks, including Flemming, J.R. Reid and Vincent Massey schools.

Subject Access: aerial photographs
campus photographs
campus buildings
Brandon streets

Images





Aerial view - Brandon University campus

<http://archives.brandonu.ca/en/permalink/descriptions7990>

Part Of: Brandon University Photograph collection
Creator: Photograph commissioned by Brandon University and taken by Yourview Aerial Scenics Ltd.

Description Level: Item
Series Number: 2.1
Item Number: BUPC 2.1.56
GMD: graphic
Date Range: c. 2000
Physical Description: 6" x 4" (colour)

Scope and Content:

View is west southwest from approximately 16th Street between Princess and Lorne Avenues. Photograph shows the Brandon University campus, as well as surrounding residential blocks between 16th and 23rd Streets, Princess and Louise Avenues..

Subject Access: aerial photographs
campus photographs
campus buildings
Brandon streets

Images





Aerial view - Brandon University campus

<http://archives.brandonu.ca/en/permalink/descriptions7991>

Part Of: Brandon University Photograph collection
Creator: Photograph commissioned by Brandon University and taken by Yourview Aerial Scenics Ltd.

Description Level: Item
Series Number: 2.1
Item Number: BUPC 2.1.57
GMD: graphic
Date Range: c. 2000
Physical Description: 6" x 4" (colour)

Scope and Content:

View is west from approximately 17th Street between Lorne and Louise Avenues. Photograph shows a portion of the Brandon University campus (excluding the Education Building and anything north of it), as well as surrounding residential blocks from approximately 17th Street to 22nd Street.

Subject Access: aerial photographs
campus photographs
campus buildings
Brandon streets

Images





Aerial view - Brandon University campus

<http://archives.brandonu.ca/en/permalink/descriptions7992>

Part Of: Brandon University Photograph collection

Description Level: Item

Series Number: 2.1

Item Number: BUPC 2.1.58

GMD: graphic

Date Range: c. 1990

Physical Description: 5" x 3.5" (colour)

Scope and Content:

View is west northwest from approximately 16th Street and Louise Avenue. Photograph shows the Brandon University campus, prior to the Library Extension, and a large portion of the city to the west of the campus.

Subject Access: aerial photographs
campus photographs
campus buildings
Brandon streets

Images





Aerial view - Brandon University campus

<http://archives.brandonu.ca/en/permalink/descriptions7993>

Part Of: Brandon University Photograph collection

Description Level: Item

Series Number: 2.1

Item Number: BUPC 2.1.59

GMD: graphic

Date Range: c. 1990

Physical Description: 5" x 3.5" (colour)

Scope and Content:

View is northwest from approximately 16th Street and Louise Avenue. Photograph shows the Brandon University campus, prior to the Library Extension, and a large portion of the city to the west of the campus.

Subject Access: aerial photographs
campus photographs
campus buildings
Brandon streets



Aerial view of Brandon postcard

<http://archives.brandonu.ca/en/permalink/descriptions13867>

Part Of: Fred McGuinness collection
Creator: Photographer: R.J. "Bob" Snazel
Description Level: Item
Series Number: McG 9
Item Number: 20-2009.177
Accession Number: 20-2009
GMD: graphic
Date Range: 1970
Physical Description: 3.5" x 6" (colour)
Material Details: postcard

Scope and Content:

Postcard shows an aerial view of the city of Brandon

Notes: Writing on the back of the postcard reads: No. 10. Brandon, Manitoba, Canada / Aerial View of Brandon / Distributed by Clements Drug Store / Brandon, Manitoba, Canada / Photos by: R.J. "Bob" Snazel. / Printed by: D.W. Friesen & Sons Ltd. Altona, Manitoba, Canada. The postcard is addressed to Mr. F.A. Rosser and is postmarked Brandon 30 May 1970. A 6-cent Queen Elizabeth red postage stamp portraying various modes of the transportation. The stamp has been cancelled with a postmark that reads "Help Retarded Children."

Name Access: City of Brandon

Subject Access: aerial photographs
aerial views

Repro Restriction: Canadian Copyright restrictions apply. Consult the Archivist.

Storage Location: RG 5 photograph storage drawer 2 (hanging photos)

Arrangement:

From 20-2009 #1 File 13 Sunbeams

Images





Agriculture: FSAM II

<http://archives.brandonu.ca/en/permalink/descriptions6249>

Part Of: RG 6 Brandon University fonds
Description Level: File
Series Number: MG 3 1.14.1
File Number: 1302
GMD: textual records
Date Range: Oct. 1991-June 1992
Physical Description: 1 file
Scope and Content:
File consists of correspondence re: Farm Support & Adjustment Measures
Storage Location: RG 6 Brandon University fonds
MG 3 Brandon University Teaching and Administration
1.14.1 W. Leland Clark - political career
Box 51



ARCH 2: North Lauder locale

<http://archives.brandonu.ca/en/permalink/descriptions12079>

Part Of: RG 7 Beverley Nicholson fonds
Description Level: Series
Series Number: 2
Accession Number: 1-2010
GMD: multiple media
Date Range: 1997 to present

History /

Biographical:

ARCH 2: North Lauder Locale

The North Lauder locale has a long archaeological and geological history that is important for understanding the forces that shaped the region. Archaeological research in the locale shows that the area has been occupied by humans for at least the past 6,500 years. Environmental forces provided an area of diverse resources that attracted early peoples.

Environment of the Lauder Sandhills

The North Lauder locale is part of the greater Lauder Sandhills area. The glaciers that covered this region began to recede approximately 11,000 years ago leaving a large lake known as glacial Lake Hind. The Souris River, the Lauder Sandhills and the Oak Lake Aquifer are remnants of the environmental and geological forces that shaped the region.

The Lauder Sandhills region is characterized by a landscape of sand sheets and stabilized sand dunes interspersed with a variety of wetlands. This complex topographic and hydrological situation favoured the development of an island mosaic of mixed forest, wetland and meadow, surrounded by mixed grass prairie. The result was a large, isolated ecotone which provided a rich variety of subsistence resources for hunter-gatherers.

Research in the Lauder Sandhills

Archaeologists from Brandon University have been conducting research in the Lauder

Archaeologists from Brandon University have been conducting research in the Lauder Sandhills since 1991. Research in the North Lauder locale has focused on the Atkinson site, a 6,500 year old hunter-gatherer site and Flintstone Hill.

The Atkinson site

The Atkinson site is one of the oldest excavated sites in Manitoba and has been Radiocarbon dated to 6,500 years before present. The Atkinson site is located on the bank of the Souris River and was discovered when a hearth (fire pit) was seen eroding out of the bank. Based on the date of the site and the kind of lithics (stone tools) present it is considered a Gowen occupation. The Atkinson site is evidence that bison hunters were active on the northern plains at a very early date. Similar sites have also been found on the High Plains in the U.S. and are referred to as the Mummy Cave Complex.

The Atkinson Site is of great importance as it is the first undisturbed site of this type to be excavated in Manitoba and extends the range of these sites south and east from the type-sites in central Saskatchewan.

Flintstone Hill

The geomorphology of the glacial Lake Hind Basin over the past 11,000 years is known primarily through the study of a cut bank along the Souris River. Flint Stone Hill contains the most complete stratigraphic record for the post-glacial period on the northern plains. The site has been extensively studied by geoarchaeologists, geologists and paleoenvironmentalists over many years and their findings have contributed to our understanding of the region.

The North Lauder locale Borden designations of Atkinson site DiMe-27 and Flintstone Hill site DiMe-26.

Borden System

Archaeological sites in Canada are identified by the Borden system, which is a uniform site designation system. The country is divided into grids based on latitude and longitude in blocks of 10 x 20 minutes. The first 4 letters indicate the block and the following numbers indicate the actual site. For example the area of the Lauder Sandhills in southwestern Manitoba is identified by the letters DM and the North Lauder locale within that area is DiMe. The Atkinson site is DiMe-27 and the Flintstone Hill site DiMe-26. As new sites are discovered they will be numbered sequentially.

Scope and Content:

The Series has been divided into two sub-series, including (1) Atkinson site DiMe-27 and Flintstone Hill site DiMe-26.

Name Access: North Lauder locale
Subject Access: Archaeology
Atkinson site DiMe-27

Arrangement:

Series is arranged by site and by year of field work.



ARCH 3: Lovstrom locale

<http://archives.brandonu.ca/en/permalink/descriptions12406>

Part Of: RG 7 Beverley Nicholson fonds
Description Level: Series
Series Number: 3
Accession Number: 1-2010

GMD: multiple media

Date Range: 1985 to 1991

History /

Biographical:

The Lovstrom locale first came to the attention of Dr. Nicholson through conversations with landowners Mr. and Mrs. Herb Lovstrom in 1985. Lovstrom is a multi-component archaeological locale located 25km south of Brandon overlooking the Souris River channel. The landowner's surface collection and the presence of bone and artifacts in a cultivated field indicated the presence of one or more sites.

Limited testing was conducted in 1985 and 1986, followed by major excavations in 1987, 1988 and 1991. Eight sites of block excavations with a total of 132 1m² excavation units were completed. The locale area extends approximately 500m north from the edge of the Souris Valley escarpment and over 200m east from the Jock's Creek escarpment.

Physical and biological environment As has been noted above, the locale is bounded on the south by the Souris channel and on the west by the incised channel of Jock's Creek and a till plain extends to the north and the east. This plain is characterized by buff colored glacial till with numerous rocks embedded in the surface. Surrounding these rocky knolls are dark-soil hollows where the various cultural occupations are found. The depth of the topsoil layer suggests a long term grassland cover with the present oak forest likely developing in historic times due to the elimination of bison grazing and the controlling of prairie fires in late historic times. A small cleared patch of farmland is found within the boundaries of the locale area. This area has provided a substantial surface collection of artifacts.

Present vegetation in the area is a mosaic of aspen/oak forest groves and mesic grass prairie that includes introduced species such as brome grass. In poorly drained areas, willow and red osier dogwood are present. The Lovstrom locale is found in a forested area dominated by oak with an under story of saskatoon, chokecherry, pin cherry, and hazelnut brush. Poison ivy is abundant as well as sarsaparilla.

The major faunal resources in Precontact times would have been bison, with elk and mule deer playing a minor role. Antelope may have been present also. Small animals included snowshoe hare, cottontails, porcupines and beaver. Canids, including wolf, coyote, fox and domesticated dog were present, as well as mustelids such as badger, mink, and weasel. Fragments from a fisher were also recovered in the excavations.

Summation.

The Lovstrom locale has eight sites. The sites were designated and excavated as Blocks A, B, C, D, E, F, G and H. Many of the sites are multi-occupations.

The Vickers materials are primarily confined to Blocks D, E, F, G and H. Vickers Focus materials overlie Blackduck/Duck Bay materials. Blackduck and Duck Bay materials are found in the lower levels of all excavation blocks and in most test units. The Vickers occupations at the Lovstrom locale, based upon ceramic wares and an overlapping of C14 dates, appear to have been contemporary with the Lowton type site to the east, near Belmont. A small protohistoric occupation was identified overlying part of Block D. Faunal remains are abundant with bison clearly dominating the assemblages. Lesser amounts of canid are present as well as small mammals including beaver, hare and mustelids. Small amounts of avian species are also present.

Publications

Nicholson, B.A.

2011 The Role of Pocket Gophers (*Thomomys talpoides*) in Restructuring Stratigraphic Relationships at the Lovstrom Site. *Canadian Journal of Archaeology* 35:323-331.

Nicholson, Bev, Scott Hamilton, Matthew Boyd and Sylvia Nicholson

2008 A Late Plains Woodland Adaptive Strategy in the Northern Parklands: the Vickers Focus Forager-Horticulturists. Invited Paper for Papers in Northeastern Plains Prehistory, eds. Michael G. Michlovic and Dennis L. Toom, North Dakota Journal of Archaeology Vol. 8:19-34.

Nicholson, Bev and Scott Hamilton
2001 Cultural Continuity and Changing Subsistence Strategies During the Late Precontact Period in Southwestern Manitoba. Canadian Journal of Archaeology 25:53-73.

Nicholson, Bev
1996 Plains Woodland Influx and the Blackduck Exodus in South-Western Manitoba During the Late Precontact Period. Manitoba Archaeological Journal 6(1):69-85.

Nicholson, Bev and Mary Malainey
1991 Report on the 1991 Field School Excavations at the Lovstrom Site (DjLx-1), Southwestern Manitoba. Manitoba Archaeological Journal 1(2): 51-93.

Nicholson, Bev and Jane Gibson
1990-91 Lovstrom Site Field Report, 1987 Excavations. Saskatchewan Archaeology 11&12:46-68.

Nicholson, Bev and Ian Kuijt
1990 Field Report and Interpretations of the 1988 Archaeological Excavations at the Lovstrom Site (DjLx-1) in Southwestern Manitoba. North Dakota Journal of Archaeology 4:166-205.

Nicholson, Bev
1990 Ceramic Affiliations and the Case for Incipient Horticulture in Southwestern Manitoba. Canadian Journal of Archaeology 14:33-60.

Nicholson, Bev
1986 The Lovstrom Site: Culture Contact in Prehistory. Manitoba Archaeological Quarterly 10(1):35-71.

Scope and Content:

The Series has been divided into nine sub-series, including (1) Survey (2) Block A; (3) Block B (4) Block C; (5) Block D; (6) Block E; (7) Block F; (8) Block G; (9) Block H

Name Access: Lovstrom locale

Subject Access: Archaeology
Lovstrom locale

Arrangement:

Series is arranged by site/block and by year of field work.



ARCH 4: Makotchi-Ded Dontipi locale

<http://archives.brandonu.ca/en/permalink/descriptions10215>

Part Of: RG 7 Beverley Nicholson fonds

Description Level: Series

Series Number: 4

Accession Number: 1-2010

GMD: multiple media

Date Range: 1992 to 2002

History /

Biographical:

Introduction

Information on archaeological materials in this locale first came to the attention of Dr. Nicholson through Doug Jackson, a local artifact collector from Souris. Doug had observed archaeological materials that included bone, ceramics and lithic material that had been exposed by municipal road building activity, northwest of Lauder Manitoba

Environment

The Makotchi-Ded Dontipi locale is located among stabilized sand dunes in the Lauder Sandhills in Southwestern Manitoba, northwest of the village of Lauder. The area is a mosaic of medium grass prairie and copses of aspen poplar and aspen-oak, together with intermittent sedge grass marshes and small ponds. These wetlands are bordered with balsam poplar, water birch, willows and red osier dogwood.

The well-drained upland forest also contains saskatoon, chokecherry, wild current, hazelnut bushes and occasional wild plums. Lowland areas have nannyberries and high-bush cranberry. Wild strawberries grow in lightly shaded areas along trail margins and in open patches in aspen forest.

History of Excavations

The Makotchi-Ded Dontipi locale is a virtual "island" of forest and marshlands in a vast expanse of mixed grass prairie. This archaeologically and environmentally rich area was given the Dakota name Makotchi-Ded Dontipi, meaning "the place where we live".

Summation

Prior to European settlement, the area was a rich environment for hunter-gatherer people. Archaeological investigations from 1992 to 2002 have revealed numerous sites within the locale. Some of these sites have been extensively excavated while others have been identified or tested.

Seven sites that have been identified in this locale range in age from the historic through protohistoric periods and extend into the middle precontact period. The major sites are the initial Middle Missouri Duthie site, the late precontact Jackson, Bradshaw sites and the protohistoric Twin Fawns, Schuddemat and Hollow B sites. The multi-component Vera site includes historic Métis, late precontact Vickers Focus, and middle precontact Besant, Pelican Lake, McKean Complex and Oxbow occupations. Over 230 units were excavated as well as numerous test pits and several extensive surveys.

Scope and Content:

Scope and Content

The Series has been divided into seven sub-series, including (1) Duthie site (2) Jackson site (3) Twin Fawns site (4) Vera site (5) Schuddemat site (6) Bradshaw site (7) Hollow B site.

Name Access: Makotchi-Ded Dontipi locale

Subject Access: Archaeology

Arrangement:

Series is arranged by site and by year of field work.



Atkinson II site 2004 - Andrea Richards field journal

<http://archives.brandonu.ca/en/permalink/descriptions12226>

Part Of: RG 7 Beverley Nicholson fonds

Description Level: File

Series Number: 2.1.3.2

File Number: 2

Accession Number: 1-2010

GMD: textual records

Date Range: 2004

Physical Description: pages 33-54

Material Details: PDF

History /

Biographical:

Field journal book of Andrea Richards for Atkinson II.

Scope and Content:

Record of excavation methods, items recovered, features, local environment and weather noted by crew chief

Name Access: Atkinson II site 2004 - Andrea Richards field journal

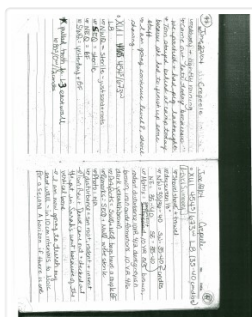
Subject Access: Archaeology

North Lauder locale

Atkinson site DiMe-29

Atkinson II site 2004 - field journal

Documents



2.1.3.2.2_AR_Bk2.pdf



Read PDF



Download PDF



Atkinson II site 2004 - artifact catalogue

<http://archives.brandonu.ca/en/permalink/descriptions12240>

Part Of: RG 7 Beverley Nicholson fonds

Description Level: sub sub sub series

Series Number: 2.1.3.4

Accession Number: 1-2010

GMD: textual records

Date Range: 2004

Physical Description: 68 pages

Material Details: PDF

History /

Biographical:

Artifact catalogue containing 455 records from Atkinson II site 2004.

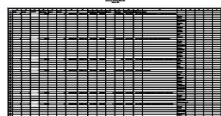
Scope and Content:

Spreadsheet containing information about the artifacts recovered, including: unit, level, artifact number, catalogue number, depth, co-ordinates, entry date, date recovered, count, weight, UTM co-ordinates, notes (excavators initials and comments) and artifact identification.

Name Access: Atkinson II site 2004 - artifact catalogue

Subject Access: Archaeology
North Lauder locale
Atkinson site DiMe-29
Atkinson II site 2004 - artifact catalogue

Documents



2.1.3.4_AtkinII_artcat.pdf

 Read PDF

 Download PDF