

S. J. McKee Archives



Baby Fred McGuinness at 6 months

<http://archives.brandonu.ca/en/permalink/descriptions14260>

Part Of: Fred McGuinness collection

Description Level: Item

Series Number: McG 9

Item Number: 1-2015.280

Accession Number: 1-2015

GMD: graphic

Date Range: 1921

Physical Description: 4.25 " x 2.5" (b/w)

Physical Condition: top left corner is torn

Scope and Content:

Photograph shows Fred McGuinness at 6-months on a bearskin rug. The rug appears to be on an outdoor porch.

Notes: Writing on the back of the photograph reads: Taken at 6 mo. old, weight 22 3/4 lbs.

Name Access: Frederick George McGuinness

Subject Access: portraits
children

Storage Location: RG 5 photograph storage drawer 2 (hanging photos)

Arrangement:

Funny trunk loose photos

Images

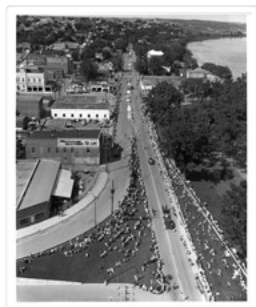


Medicine Hat Exhibition and Stampede - Parade Day 6

<http://archives.brandonu.ca/en/permalink/descriptions14147>

Part Of: Fred McGuinness collection

Creator: Photographer: Howard Heid, Medicine Hat News



Description Level: Item
Series Number: McG 9
Item Number: 1-2015.216
Accession Number: 1-2015
GMD: graphic
Date Range: 1962
Physical Description: 10" x 8" (b/w)

History /

Biographical:

The Medicine Hat Exhibition and Stampede Parade Day was held on Thursday, July 19, 1962, at 9:30 a.m. The local newspaper reported that approximately 24,000 people were in attendance to see parade marshal Rod Ashburner leading 175 entries consisting of 90 floats, 75 horses, and 10 bands. There were 19 parade categories eligible for \$12,000 in prize money and included: junior and senior cowboys and cowgirls; fancy and Shetland ponies; sulky class open; comic, commercial, industrial and organizational floats; decorated cars; special ranch class; 4-H Clubs; and a non-competitive class.

The parade route started at Second St. and Allowance Ave., from Second St. to Ash Ave., north on Ash to First St. SE., from First St. S.E. to Fourth Ave., south to Second St. to South Railway St., south on South Railway St. to Third St., with a finish at McLeod Trail. A route map was published in the Medicine Hat News the day before the parade.

Aerial photographs of the parade were taken by Medicine Hat News photographer Howard Heid (1930-2005) from the private helicopter of John Bourn. Bourn was a pilot from Woodville, Wisconsin, who chartered his four-seater helicopter for sight-seers at exhibitions and stampedes across the county.

(Sources: Pat Currie, "Let 'Er Go!," Medicine Hat News, 19 July 1962,1; Harald Gunderson, "'Eye in the Sky' Best Parade View," Medicine Hat News, 19 July 1962,1; "Parade Starts at 9:30 Sharp," 18 July 1962)

Scope and Content:

Photograph shows an aerial view of the Medicine Hat Exhibition and Stampede Parade route with a focus on the First Street SE and and the South Railway Street merge. A number of gas stations and garages are visible along this route and include Texaco, Shell, Ford, and B/A. The Fraternal Order of Eagles lodge is also visible.

Notes: This photograph shows the neighbourhood before rezoning and commercial development.

Name Access: Medicine Hat
South Saskatchewan River

Subject Access: parades
floats
aerial photography
aerial views
street scenes
gardens
fraternal organizations
garages

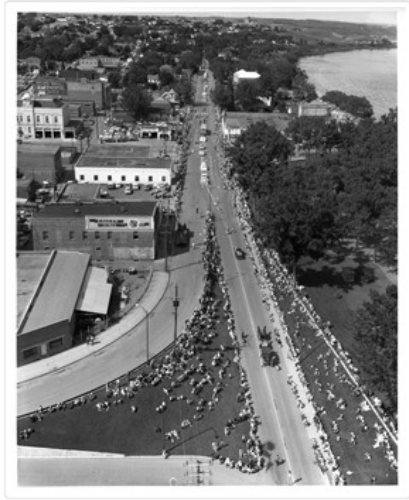
Repro Restriction: Subject to Canadian Copyright Law

Storage Location: RG 5 photograph storage drawer 2 (hanging photos)

Arrangement:

BR #3 Family photos

Images





Album - Bridal Veil Falls

<http://archives.brandonu.ca/en/permalink/descriptions14219>

Part Of: Fred McGuinness collection

Description Level: Item

Series Number: McG 9

Item Number: 1-2015.277.A11

Accession Number: 1-2015

GMD: graphic

Date Range: [1900s]

Physical Description: 4" x 2.5" (b/w)

Material Details: mounted in album

Physical Condition: Photo is warped

Scope and Content:

Photograph shows a water fall surrounded by pines. A man is standing on a wall at the base of the falls. A pile of lumber is in the foreground.

Notes: Writing beneath the photograph in the album reads: Bridal Veil Falls
[British Columbia]

Subject Access: **waterfalls**

Storage Location: 1-2015 McG 1.4 Box 1 (in stacks, top shelf)

Images

