

S. J. McKee Archives



Henry Hlady collection

<http://archives.brandonu.ca/en/permalink/descriptions12706>

Part Of: RG 5 Western Manitoba Manuscript Collection

Description Level: Collection

Accession Number: 13-2011

GMD: multiple media

Date Range: 1916 - 2010; predominant 1930 -1942

Physical Description: 0.5 cm textual records

9 photographs (b&w)

2 negatives

Physical Condition: Good

History /

Biographical:

Henry Hlady was born in Brandon, Manitoba on October 30, 1916, the son of Philip and Katherine Hlady, both natives of Austria. He was educated in public schools in Brandon. During the Great Depression, Hlady spent time - October 1933 to May 1934 - in work camps for the single unemployed in Riding Mountain cutting down tress and clearing bush. He sought to join the Canadian Army in 1942 but was rejected for medical reasons.

Hlady apprenticed as a carpenter with Sprattling and spent many years with Magnacca Construction before becoming a private builder. He retired in 1984 from the Manitoba Housing and Renewal Corporation where he was employed as a building inspector.

Hlady was a life-long Liberal in politics and an active trapshooter. In 200 he was honoured by the Brandon Gun Club and made a Life Member of the American Trapshooters' Association for his dedication to the sport. Hlady was also active with the West End Community Centre and a member of the Westoba Credit Union Board of Directors.

Hlady married Mary Plowman in 1943 or 1944. Together they had three children: Ronald, Judith and Lynda. Henry Hlady died on April 8, 2010 in Brandon, MB.

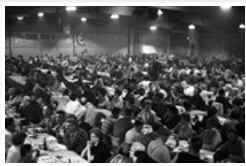
Custodial History:

Records were in Henry Hlady's possession until his death when they passed to his wife Mary Hlady who donated them to the McKee Archives. Two photographs were in the possession of Hlady's daughter Judith Grievson prior to their donation to the Archives.

Scope and Content:

Collection consists of various personal documents concerning Henry Hlady including a birth certificate (copy) and certificate of baptism (copy), communion certificate, public school records, certificate of medical rejection for service in the Canadian Army, newspaper clippings, obituary, and funeral program. Collection also includes documents and photographs concerning Hlady's time spent - October 1933 to May 1934 - in federal government work camps for single unemployed men in Riding Mountain, including a handwritten letter to E.S. Stozek (dated February 2008) about Hlady's memories of his time at Camp Seven and the other relief camps in the area.

Notes: Description by Tom Mitchell and Christy Henry.
Name Access: Riding Mountain
Camp Seven
Subject Access: Great Depression
work camps
Storage Location: 2011 accessions



UCT presentation to Cancer Society

<http://archives.brandonu.ca/en/permalink/descriptions12935>

Part Of: CKX fonds
Creator: CKX
Description Level: Item
Series Number: U
Item Number: 11-2010.U6c
Accession Number: 11-2010
GMD: graphic
Date Range: 1967
Physical Description: 1.5" x 1.5" (b/w)
Material Details: Negative
Custodial History:

See fonds level of the CKX records for custodial history.

Scope and Content:

Image of people seated at tables.

Name Access: CKX
Subject Access: persons
building interiors
social events
Storage Location: CKX fonds - 2010 accessions

Images





UCT presentation to Cancer Society

<http://archives.brandonu.ca/en/permalink/descriptions12936>

Part Of: CKX fonds
Creator: CKX
Description Level: Item
Series Number: U
Item Number: 11-2010.U6b
Accession Number: 11-2010
GMD: graphic
Date Range: 1967
Physical Description: 1.5" x 1.5" (b/w)
Material Details: Negative

Custodial History:

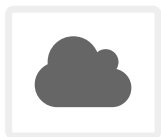
See fonds level of the CKX records for custodial history.

Scope and Content:

Image of people playing bingo.

Name Access: CKX
Subject Access: persons
building interiors
social events
Storage Location: CKX fonds - 2010 accessions

Images



Gerry Beaubier collection

<http://archives.brandonu.ca/en/permalink/descriptions13541>

Part Of: RG 5 Western Manitoba Manuscript Collection
Description Level: Collection
Accession Number: 11-2013
GMD: electronic records
Date Range: 1916-1917
Physical Description: 35 digital photographs
Material Details: JPEGs

History /

Biographical:

Gerry Beaubier was born in Wainwright, Alberta to Beatty and Babe Beaubier. He completed his high school in Saskatoon, before receiving a BSc in Geography from Brandon University.

Before attending university Gerry served in the army as a special reserve, while working as a night clerk at the Bessborough Hotel in Saskatoon. His post-graduate career consisted primarily of work for Canada Agriculture, under the PFRA Branch (Prairie Farm Rehabilitation Administration). Later he would work as an Executive Manager, helping develop forage and range management programs for several post secondary schools, including, Assiniboine Community College, as well as schools in Red Deer, Lethbridge, and Saskatoon.

Gerry Beaubier married Joyce Abercrombie, of Saskatoon. Together they had two sons: Neil and Dean. Neil, an Account Advisor for the Royal Bank, was born in Regina, and currently works in Swift Current. Dean was born in Swift Current, received his PhD in Education and currently lives in Forrest working at Elton Collegiate.

The Beaubiers, who were originally from Ireland, emigrated to the Canadian West, making Gerry part of the fourth generation of his family to call the region home. His great-grandfather, along with his grandfather and great uncle were amongst the first one hundred settlers in Brandon. Together they first built the Beaubier House, a boarding house for early settlers and travellers. After it burnt down they began construction on the Beaubier Hotel, which stood at the corner of 8th Street and Princess Avenue in Brandon until August 17th, 2008. His grandfather, David Wilson Beaubier, continued to build and operate hotels throughout the prairies, including the Empire Hotels (of Brandon and Saskatoon) and The Park (Moose Jaw).

David Wilson Beaubier served as a secretary of the Orange Lodge of Manitoba. As an Orange Lodge Colonel, he worked with other Orange Lodge members, to recruit throughout the prairies for the purpose of World War One. For his efforts, David was promoted to Lieutenant Colonel, and later Captain of the 99th Manitoba Rangers. David's sons (Gerry's father, at University of Manitoba, and uncle at McGill), were both working towards undergraduate degrees when war broke out in 1914, and each would leave school to join their father at Camp Hughes.

Custodial History:

Gerry Beaubier collected these photos primarily in the years 2000-2011, largely from family and friends who knew of his interest in the topic. They were donated to the S.J. McKee Archives in 2011.

Scope and Content:

Collection consists of digital photographs of those who trained for battle in World War I at Camp Hughes and in Brandon, Manitoba. It also includes a digital copy of the cover of the Nominal Roll of Officers, Non-Commissioned Officers and Men, who departed from Brandon in 1917.

The photos, taken primarily at Camp Hughes, are of a number of battalions, including the 34th, 100th, 108th, 181st and 214th. The photo, PT in England, is a postcard sent home from Beatty Beaubier. The Massey Harris building seen on the right side of, WW1 B parade0001, was used to house troops throughout the war. The man standing alone at the front of the parade in, 181 Parade, is David Wilson Beaubier.

Notes: Information for the biographical and custodial histories was provided by Gerry Beaubier on September 25, 2013. Description by Dustin Lane (October 2013).

Name Access: Gerald Beaubier
Gerry Beaubier
Beaubier family

Camp Hughes
Brandon, MB
Lieut. D. Slemin
Capt. C. Smith
Capt. J. Strong
Capt. Ridgeway
Lieut. W. Smith
Lieut. T. Williams
Lieut. H. Craig
Capt. S.R. Wallace
Lieut. D.H. Beaubier
David Wilson Beaubier
Capt. E.L. Abbott
Major E.R.C. Wilcox
Major N.F. McCahey
Lt.-Col. Sutherland
Lt.-Col. Foster
Major Lawless
Major Collier
Capt. J.D. Young
Capt. A.E. Vanderpump
Capt. J.E. West
Capt. Munro
Lieut. Watson
Lieut. Johnstone
Lieut. McIntosh
Lieut. Cherry
Lieut. Bryan
Lieut. J.L. Evans
Lieut. J. Kavanaugh
Lieut. I. Vipond
Capt. Rutherford
Lieut. Cluff
Capt. Maples
Lieut. Lane
Lieut. E.C. Whitehead
Lieut. R. Carleton
Lieut. B.F. Beaubier
Fincher
Lieut. Beaver
Lieut. McCool
Lieut. A.P. Milk
Lieut. Joseph Hardy
Lieut. K. Spencer
Lieut. J. Faulkner

Lieut. F. Keall
181st Battalion
181st Brandon Overseas Battalion Band
A. Gov. Lines 108th
No. 13 Platoon 108th Battalion
184th Battalion
34th Fort Garry
100th Battalion
214th Battalion
108th Signallers
Stretcher Bearer Section 108th
Machine Gun Section 108th Battalion
181st Brandon Overseas Battalion
armed forces
military personnel
barracks
public ceremonies
downtown
historic sites
railroads
military services
parades
regional parks
passenger trains
Veterans
railway stations
train stations
restaurants
food services
war
World War I
World War One
First World War
The Great War

Subject Access:

Storage Location: T: drive/shared 02/web photos



Brandon College Platoon

<http://archives.brandonu.ca/en/permalink/descriptions14257>

Part Of: Joseph H. Hughes collection
Creator: Photographer: Davidson Studio
Description Level: Item
Series Number: 3-1997.1
Item Number: 3-1997.1.66

Accession Number: 3-1997
Other Numbers: Hughes #81
GMD: graphic
Date Range: 1916
Physical Description: 13.5" x 10.5" (b/w)
Material Details: on matting
Physical Condition: Photograph beginning to separate from matting

History /

Biographical:

Brandon College established a Canadian Officer Training Corps (COTC) program in 1916 and had enough students for a platoon that would join the 196th Western Universities Battalion's B Company. COTC logs for in the SJ McKee Archives show that at least 40 men regularly attended classes on campus during the 1916 winter term.

The Brandon Daily Sun published the names of 60 potential platoon recruits before they headed to Camp Hughes to train in the summer of 1916. Although Lt. J.R.C. Evans spearheaded the training of the COTC enlistees at Brandon College, he was found medically unfit for overseas service. In his stead, the son of the college's founder, Lt. William Carey McKee, lead the platoon to Camp Hughes where they joined the 196th Battalion. Of the 60 recruits identified in the local paper, 20 would not survive the war, including Lt. McKee.

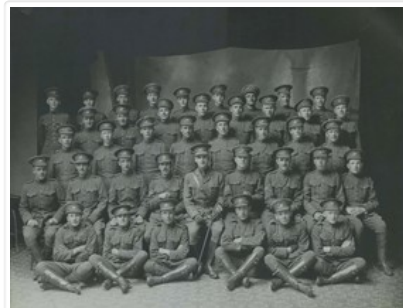
[ST/2016]

Scope and Content:

Photograph shows a group of 40 men wearing WWI uniforms. The men have the Canada general service cap badge on their headdress. The officer in the centre of the group (i.e., the man with the cane) is J.R.C. Evans. The group of men are likely members of the first Brandon College Platoon, which joined the 196th Western Universities Battalion.

Name Access: J.R.C. Evans
Subject Access: portraits
First World War
Great War
Storage Location: Hughes oversize drawer
Related Material: Daly House Museum
The Clark Hall Scrapbook

Images



Construction of Great Northern (BS&HB) Railway Bridge at



Bunclody - Grade

<http://archives.brandonu.ca/en/permalink/descriptions9977>

Part Of: RG 11 Lawrence Stuckey fonds

Description Level: Item

Series Number: 3.1

Item Number: 1-2002.3.1PE1

Accession Number: 1-2002

GMD: graphic

Date Range: [1905 or 1906]

Physical Description: 3 1/2" x 5"

Material Details: Negative

History /

Biographical:

According to Stuckey and Bain (1996), "The Brandon, Saskatchewan & Hudson's Bay Railway was built and operated as a totally owned subsidiary of the Great Northern Railway. Construction commenced in late 1905 and by the end of 1905, less than a mile of track had been laid north of the boundary at St. John. In 1906, the remaining 68.6 miles to Brandon were laid and service commenced that year. During the Depression of the 1930s, traffic declined significantly and the entire branch was abandoned in 1936. Over much of the branch's length, the ties and rails were laid on the prairie without ballast and today little remains of the line apart from traces where there were cuts and bridges." (p. 18)

Stuckey, L. A., & Bain, D. M. (1996). The Great Northern and Northern Pacific railways in Canada. Calgary, Alberta: British Railway Modellers of North America.

Custodial History:

For custodial history see the collection level description of the Lawrence Stuckey collection.

Scope and Content:

View of the Great Northern (BS&HB) Railway building a grade [to their bridge] at Bunclody, Manitoba.

Notes: [This railway bridge crossed the Souris River. P.E.]
From the collection of Gilford Copeland of Bunclody, Manitoba
Copy negative LAS.

Name Access: Construction of Great Northern (BS&HB) Railway
Brandon, Saskatchewan & Hudson's Bay Railway
Great Northern Railway

Subject Access: railroads
railways
manmade geographic features
construction
construction of bridges
bridges
Great Northern Railway from Church's Ferry ND to Brandon MB

Repro Restriction: The McKee Archives is the copyright holder for the Stuckey materials.

Storage Location: Lawrence Stuckey collection

Images



Construction of Great Northern (BS&HB) Railway Bridge at Bunclody - Grading Station

<http://archives.brandonu.ca/en/permalink/descriptions9978>

Part Of: RG 11 Lawrence Stuckey fonds

Description Level: Item

Series Number: 3.1

Item Number: 1-2002.3.1PE2

Accession Number: 1-2002

GMD: graphic

Date Range: [1905 or 1906]

Physical Description: 3 1/2" x 5"

Material Details: Negative

History /

Biographical:

According to Stuckey and Bain (1996), "The Brandon, Saskatchewan & Hudson's Bay Railway was built and operated as a totally owned subsidiary of the Great Northern Railway.

Construction commenced in late 1905 and by the end of 1905, less than a mile of track had been laid north of the boundary at St. John. In 1906, the remaining 68.6 miles to Brandon were laid and service commenced that year. During the Depression of the 1930s, traffic declined significantly and the entire branch was abandoned in 1936. Over much of the branch's length, the ties and rails were laid on the prairie without ballast and today little remains of the line apart from traces where there were cuts and bridges." (p. 18)

Stuckey, L. A., & Bain, D. M. (1996). The Great Northern and Northern Pacific railways in Canada. Calgary, Alberta: British Railway Modellers of North America.

Custodial History:

For custodial history see the collection level description of the Lawrence Stuckey collection.

Scope and Content:

View of the Great Northern (BS&HB) Railway building a grade [to their bridge] at Bunclody, Manitoba.

Notes: Grading station site

From the collection of Gilford Copeland of Bunclody, Manitoba

Copy negative LAS.

Name Access: Construction of Great Northern (BS&HB) Railway
Brandon, Saskatchewan & Hudson's Bay Railway
Great Northern Railway

Subject Access: railroads
 railways
 manmade geographic features
 construction
 construction of bridges
 bridges
 Great Northern Railway from Church's Ferry ND to Brandon MB

Repro Restriction: The McKee Archives is the copyright holder for the Stuckey materials.

Storage Location: Lawrence Stuckey collection

Images



Great Northern Railway Steam Shovel & Cars

<http://archives.brandonu.ca/en/permalink/descriptions9979>

Part Of: RG 11 Lawrence Stuckey fonds

Description Level: Item

Series Number: 3.1

Item Number: 1-2002.3.1PE3

Accession Number: 1-2002

GMD: graphic

Date Range: [1905 or 1906]

Physical Description: 3 1/2" x 5"

Material Details: Negative

History /

Biographical:

According to Stuckey and Bain (1996), "The Brandon, Saskatchewan & Hudson's Bay Railway was built and operated as a totally owned subsidiary of the Great Northern Railway. Construction commenced in late 1905 and by the end of 1905, less than a mile of track had been laid north of the boundary at St. John. In 1906, the remaining 68.6 miles to Brandon were laid and service commenced that year. During the Depression of the 1930s, traffic declined significantly and the entire branch was abandoned in 1936. Over much of the branch's length, the ties and rails were laid on the prairie without ballast and today little remains of the line apart from traces where there were cuts and bridges." (p. 18)

Stuckey, L. A., & Bain, D. M. (1996). The Great Northern and Northern Pacific railways in Canada. Calgary, Alberta: British Railway Modellers of North America.

Custodial History:

For custodial history see the collection level description of the Lawrence Stuckey collection.

Scope and Content:

Great Northern Railway steam shovel & earth cars.

Notes:	Used in the construction of the Brandon, Saskatchewan and Hudson's Bay Railway at Bunclody, Manitoba Great Northern Railway photo From the collection of Gilford Copeland of Bunclody, Manitoba Copy negative LAS.
Name Access:	Construction of Great Northern (BS&HB) Railway Brandon, Saskatchewan & Hudson's Bay Railway Great Northern Railway
Subject Access:	steam shovels railroads railways manmade geographic features construction of bridges bridges Great Northern Railway from Church's Ferry ND to Brandon MB
Repro Restriction:	The McKee Archives is the copyright holder for the Stuckey materials.
Storage Location:	Lawrence Stuckey collection

Images



Great Northern Railway crane on Souris River bridge

<http://archives.brandonu.ca/en/permalink/descriptions9980>

Part Of:	RG 11 Lawrence Stuckey fonds
Creator:	Great Northern Railway
Description Level:	Item
Series Number:	3.1
Item Number:	1-2002.3.1PE4
Accession Number:	1-2002
GMD:	graphic
Date Range:	[between 1905 and 1936]
Physical Description:	3 1/2" x 5"

Material Details: Negative

History /

Biographical:

According to Stuckey and Bain (1996), "The Brandon, Saskatchewan & Hudson's Bay Railway was built and operated as a totally owned subsidiary of the Great Northern Railway. Construction commenced in late 1905 and by the end of 1905, less than a mile of track had been laid north of the boundary at St. John. In 1906, the remaining 68.6 miles to Brandon were laid and service commenced that year. During the Depression of the 1930s, traffic declined significantly and the entire branch was abandoned in 1936. Over much of the branch's length, the ties and rails were laid on the prairie without ballast and today little remains of the line apart from traces where there were cuts and bridges." (p. 18)

Stuckey, L. A., & Bain, D. M. (1996). The Great Northern and Northern Pacific railways in Canada. Calgary, Alberta: British Railway Modellers of North America.

Custodial History:

For custodial history see the collection level description of the Lawrence Stuckey collection.

Scope and Content:

Great Northern Railway crane on Souris River bridge, Bunclody, Manitoba.

Notes: [Mr. Stuckey is unsure if this photo was taken during construction of the bridge, or whether it may have been taken during its dismantling when the railway line closed. P.E.]

From the collection of Gilford Copeland of Bunclody, Manitoba

Copy negative LAS.

Name Access: Construction of Great Northern (BS&HB) Railway
Brandon, Saskatchewan & Hudson's Bay Railway
Great Northern Railway

Subject Access: cranes
railroads
railways
manmade geographic features
construction of bridges
bridges
Great Northern Railway from Church's Ferry ND to Brandon MB

Repro Restriction: The McKee Archives is the copyright holder for the Stuckey materials.

Storage Location: Lawrence Stuckey collection

Images





Great Northern Railway Steam Shovel Loading Cars

<http://archives.brandonu.ca/en/permalink/descriptions9981>

Part Of: RG 11 Lawrence Stuckey fonds

Description Level: Item

Series Number: 3.1

Item Number: 1-2002.3.1PE5

Accession Number: 1-2002

GMD: graphic

Date Range: [1905 or 1906]

Physical Description: 3 1/2" x 5"

Material Details: Negative

History /

Biographical:

According to Stuckey and Bain (1996), "The Brandon, Saskatchewan & Hudson's Bay Railway was built and operated as a totally owned subsidiary of the Great Northern Railway. Construction commenced in late 1905 and by the end of 1905, less than a mile of track had been laid north of the boundary at St. John. In 1906, the remaining 68.6 miles to Brandon were laid and service commenced that year. During the Depression of the 1930s, traffic declined significantly and the entire branch was abandoned in 1936. Over much of the branch's length, the ties and rails were laid on the prairie without ballast and today little remains of the line apart from traces where there were cuts and bridges." (p. 18)

Stuckey, L. A., & Bain, D. M. (1996). The Great Northern and Northern Pacific railways in Canada. Calgary, Alberta: British Railway Modellers of North America.

Custodial History:

For custodial history see the collection level description of the Lawrence Stuckey collection.

Scope and Content:

Great Northern Railway steam shovel loading cars near Bunclody, Manitoba.

Notes: Used in the construction of the Brandon, Saskatchewan and Hudson's Bay Railway at Bunclody, Manitoba

From the collection of Gilford Copeland of Bunclody, Manitoba
[Combined] copy negative LAS.

Name Access: Construction of Great Northern (BS&HB) Railway
Brandon, Saskatchewan & Hudson's Bay Railway
Great Northern Railway

Subject Access: steam shovels
railroads
railways
manmade geographic features
construction of bridges
bridges

Great Northern Railway from Church's Ferry ND to Brandon MB

Repro Restriction: The McKee Archives is the copyright holder for the Stuckey materials.

Storage Location: Lawrence Stuckey collection

Images



Great Northern (BS&HB) Railway Construction Camp near Bunclody

<http://archives.brandonu.ca/en/permalink/descriptions9982>

Part Of: RG 11 Lawrence Stuckey fonds

Description Level: Item

Series Number: 3.1

Item Number: 1-2002.3.1PE6

Accession Number: 1-2002

GMD: graphic

Date Range: [1905 or 1906]

Physical Description: 3 1/2" x 5"

Material Details: Negative

History /

Biographical:

According to Stuckey and Bain (1996), "The Brandon, Saskatchewan & Hudson's Bay Railway was built and operated as a totally owned subsidiary of the Great Northern Railway. Construction commenced in late 1905 and by the end of 1905, less than a mile of track had been laid north of the boundary at St. John. In 1906, the remaining 68.6 miles to Brandon were laid and service commenced that year. During the Depression of the 1930s, traffic declined significantly and the entire branch was abandoned in 1936. Over much of the branch's length, the ties and rails were laid on the prairie without ballast and today little remains of the line apart from traces where there were cuts and bridges." (p. 18)

Stuckey, L. A., & Bain, D. M. (1996). The Great Northern and Northern Pacific railways in Canada. Calgary, Alberta: British Railway Modellers of North America.

Custodial History:

For custodial history see the collection level description of the Lawrence Stuckey collection.

Scope and Content:

Great Northern (Brandon, Saskatchewan and Hudson's Bay) Railway construction camp near Bunclody, Manitoba.

Notes: From the collection of Gilford Copeland of Bunclody, Manitoba
[Combined] copy negative LAS.

Name Access: Construction of Great Northern (BS&HB) Railway
Brandon, Saskatchewan & Hudson's Bay Railway
Great Northern Railway

Subject Access: railroads
 railways
 manmade geographic features
 construction of bridges
 Great Northern Railway from Church's Ferry ND to Brandon MB

Repro Restriction: The McKee Archives is the copyright holder for the Stuckey materials.

Storage Location: Lawrence Stuckey collection

Images



Great Northern Railway Steam Shovel

<http://archives.brandonu.ca/en/permalink/descriptions9983>

Part Of: RG 11 Lawrence Stuckey fonds

Description Level: Item

Series Number: 3.1

Item Number: 1-2002.3.1PE7

Accession Number: 1-2002

GMD: graphic

Date Range: [1905 or 1906]

Physical Description: 3 1/2" x 5"

Material Details: Negative

History /

Biographical:

According to Stuckey and Bain (1996), "The Brandon, Saskatchewan & Hudson's Bay Railway was built and operated as a totally owned subsidiary of the Great Northern Railway.

Construction commenced in late 1905 and by the end of 1905, less than a mile of track had been laid north of the boundary at St. John. In 1906, the remaining 68.6 miles to Brandon were laid and service commenced that year. During the Depression of the 1930s, traffic declined significantly and the entire branch was abandoned in 1936. Over much of the branch's length, the ties and rails were laid on the prairie without ballast and today little remains of the line apart from traces where there were cuts and bridges." (p. 18)

Stuckey, L. A., & Bain, D. M. (1996). The Great Northern and Northern Pacific railways in Canada. Calgary, Alberta: British Railway Modellers of North America.

Custodial History:

For custodial history see the collection level description of the Lawrence Stuckey collection.

Scope and Content:

Great Northern Railway steam shovel.

Notes: Used in the construction of the Brandon, Saskatchewan and Hudson's Bay Railway at Bunclody, Manitoba
Great Northern Railway photo
From the collection of Gilford Copeland of Bunclody, Manitoba
Copy negative LAS.

Name Access: Construction of Great Northern (BS&HB) Railway
Brandon, Saskatchewan & Hudson's Bay Railway
Great Northern Railway

Subject Access: steam shovels
railroads
railways
manmade geographic features
construction of bridges
Great Northern Railway from Church's Ferry ND to Brandon MB

Repro Restriction: The McKee Archives is the copyright holder for the Stuckey materials.

Storage Location: Lawrence Stuckey collection

Images



Great Northern (BS&HB) Railway Trestle East of Bunclody

<http://archives.brandonu.ca/en/permalink/descriptions9984>

Part Of: RG 11 Lawrence Stuckey fonds

Description Level: Item

Series Number: 3.1

Item Number: 1-2002.3.1PE8

Accession Number: 1-2002

GMD: graphic

Date Range: [1905 or 1906]

Physical Description: 3 1/2" x 5"

Material Details: Negative

History /

Biographical:

According to Stuckey and Bain (1996), "The Brandon, Saskatchewan & Hudson's Bay Railway was built and operated as a totally owned subsidiary of the Great Northern Railway. Construction commenced in late 1905 and by the end of 1905, less than a mile of track had been laid north of the boundary at St. John. In 1906, the remaining 68.6 miles to Brandon were laid and service commenced that year. During the Depression of the 1930s, traffic declined significantly and the entire branch was abandoned in 1936. Over much of the branch's length, the ties and rails were laid on the prairie without ballast and today little remains of the line apart from traces where there were cuts and bridges." (p. 18)

Stuckey, L. A., & Bain, D. M. (1996). The Great Northern and Northern Pacific railways in Canada. Calgary, Alberta: British Railway Modellers of North America.

Custodial History:

For custodial history see the collection level description of the Lawrence Stuckey collection.

Scope and Content:

View of a Great Northern (BS&HB) Railway trestle east of Bunclody, Manitoba.

Notes:	Under construction [Note small train dumping earthen fill. P.E.] From the collection of Gilford Copeland of Bunclody, Manitoba Copy negative LAS.
Name Access:	Construction of Great Northern (BS&HB) Railway Brandon, Saskatchewan & Hudson's Bay Railway Great Northern Railway
Subject Access:	railroads railways manmade geographic features construction construction of bridges bridges Great Northern Railway from Church's Ferry ND to Brandon MB
Repro Restriction:	The McKee Archives is the copyright holder for the Stuckey materials.
Storage Location:	Lawrence Stuckey collection

Images



Great Northern (BS&HB) Railway overpass east of Bunclody



station

<http://archives.brandonu.ca/en/permalink/descriptions9985>

Part Of: RG 11 Lawrence Stuckey fonds

Creator: Copy negative LAS

Description Level: Item

Series Number: 3.1

Item Number: 1-2002.3.1PE9(1)

Accession Number: 1-2002

GMD: graphic

Date Range: [193-?]

Physical Description: 3 1/2" x 5"

Material Details: Negative

History /

Biographical:

According to Stuckey and Bain (1996), "The Brandon, Saskatchewan & Hudson's Bay Railway was built and operated as a totally owned subsidiary of the Great Northern Railway. Construction commenced in late 1905 and by the end of 1905, less than a mile of track had been laid north of the boundary at St. John. In 1906, the remaining 68.6 miles to Brandon were laid and service commenced that year. During the Depression of the 1930s, traffic declined significantly and the entire branch was abandoned in 1936. Over much of the branch's length, the ties and rails were laid on the prairie without ballast and today little remains of the line apart from traces where there were cuts and bridges." (p. 18)

Stuckey, L. A., & Bain, D. M. (1996). The Great Northern and Northern Pacific railways in Canada. Calgary, Alberta: British Railway Modellers of North America.

Custodial History:

For custodial history see the collection level description of the Lawrence Stuckey collection.

Scope and Content:

Great Northern (BS&HB) Railway overpass east of station, Buncloody, Manitoba.

Notes: From the collection of Gilford Copeland of Buncloody, Manitoba.

Name Access: Brandon, Saskatchewan & Hudson's Bay Railway

Great Northern Railway

Subject Access: railroads

railways

manmade geographic features

bridges

Great Northern Railway from Church's Ferry ND to Brandon MB

Repro Restriction: The McKee Archives is the copyright holder for the Stuckey materials.

Storage Location: Lawrence Stuckey collection

Arrangement:

[Mr. Stuckey taped a print to this envelope. We have separated them, numbering the negative PE9(1) and the print PE9(2).]

Images



Great Northern (BS&HB) Railway overpass east of Bunclody station

<http://archives.brandonu.ca/en/permalink/descriptions9986>

Part Of: RG 11 Lawrence Stuckey fonds
 Creator: Copy negative LAS
 Description Level: Item
 Series Number: 3.1
 Item Number: 1-2002.3.1PE9(2)
 Accession Number: 1-2002
 GMD: graphic
 Date Range: [193-?]
 Physical Description: 2" x 4"
 Material Details: Photograph

History /

Biographical:

According to Stuckey and Bain (1996), "The Brandon, Saskatchewan & Hudson's Bay Railway was built and operated as a totally owned subsidiary of the Great Northern Railway. Construction commenced in late 1905 and by the end of 1905, less than a mile of track had been laid north of the boundary at St. John. In 1906, the remaining 68.6 miles to Brandon were laid and service commenced that year. During the Depression of the 1930s, traffic declined significantly and the entire branch was abandoned in 1936. Over much of the branch's length, the ties and rails were laid on the prairie without ballast and today little remains of the line apart from traces where there were cuts and bridges." (p. 18)

Stuckey, L. A., & Bain, D. M. (1996). The Great Northern and Northern Pacific railways in Canada. Calgary, Alberta: British Railway Modellers of North America.

Custodial History:

For custodial history see the collection level description of the Lawrence Stuckey collection.

Scope and Content:

Great Northern (BS&HB) Railway overpass east of station, Bunclody, Manitoba.

Notes: From the collection of Gilford Copeland of Bunclody, Manitoba.

Name Access: Brandon, Saskatchewan & Hudson's Bay Railway
 Great Northern Railway

Subject Access: railroads
 railways
 manmade geographic features
 bridges
 Great Northern Railway from Church's Ferry ND to Brandon MB

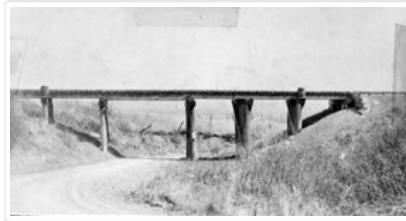
Repro Restriction: The McKee Archives is the copyright holder for the Stuckey materials.

Storage Location: Lawrence Stuckey collection

Arrangement:

 [Mr. Stuckey taped a print to this envelope. We have separated them, numbering the negative PE9(1) and the print PE9(2).]

Images



Great Northern (BS&HB) Railway Bridge at Bunclody

<http://archives.brandonu.ca/en/permalink/descriptions9987>

Part Of: RG 11 Lawrence Stuckey fonds

Description Level: Item

Series Number: 3.1

Item Number: 1-2002.3.1PE10

Accession Number: 1-2002

GMD: graphic

Date Range: 1930

Physical Description: 3 1/2" x 5"

Material Details: Negative

History /

Biographical:

According to Stuckey and Bain (1996), "The Brandon, Saskatchewan & Hudson's Bay Railway was built and operated as a totally owned subsidiary of the Great Northern Railway. Construction commenced in late 1905 and by the end of 1905, less than a mile of track had been laid north of the boundary at St. John. In 1906, the remaining 68.6 miles to Brandon were laid and service commenced that year. During the Depression of the 1930s, traffic declined significantly and the entire branch was abandoned in 1936. Over much of the branch's length, the ties and rails were laid on the prairie without ballast and today little remains of the line apart from traces where there were cuts and bridges." (p. 18)

Stuckey, L. A., & Bain, D. M. (1996). The Great Northern and Northern Pacific railways in Canada. Calgary, Alberta: British Railway Modellers of North America.

Custodial History:

For custodial history see the collection level description of the Lawrence Stuckey collection.

Scope and Content:

Great Northern (BS&HB) Railway bridge crossing the Souris River at Buncloody, Manitoba.

Notes: [This copy negative was produced using a previously published image.
P.E. 29/07/09]

Name Access: Brandon, Saskatchewan & Hudson's Bay Railway
Great Northern Railway

Subject Access: railroads
railways
manmade geographic features
bridges

Great Northern Railway from Church's Ferry ND to Brandon MB

Repro Restriction: The McKee Archives is the copyright holder for the Stuckey materials.

Storage Location: Lawrence Stuckey collection

Images



Great Northern Railway Crane on Souris River Bridge

<http://archives.brandonu.ca/en/permalink/descriptions9988>

Part Of: RG 11 Lawrence Stuckey fonds
Description Level: Item
Series Number: 3.1
Item Number: 1-2002.3.1PE11
Accession Number: 1-2002
GMD: graphic
Date Range: 1930
Physical Description: 3 1/2" x 5"
Material Details: Negative

History /

Biographical:

According to Stuckey and Bain (1996), "The Brandon, Saskatchewan & Hudson's Bay Railway was built and operated as a totally owned subsidiary of the Great Northern Railway. Construction commenced in late 1905 and by the end of 1905, less than a mile of track had been laid north of the boundary at St. John. In 1906, the remaining 68.6 miles to Brandon were laid and service commenced that year. During the Depression of the 1930s, traffic declined significantly and the entire branch was abandoned in 1936. Over much of the branch's length, the ties and rails were laid on the prairie without ballast and today little remains of the line apart from traces where there were cuts and bridges." (p. 18)

Stuckey, L. A., & Bain, D. M. (1996). The Great Northern and Northern Pacific railways in Canada. Calgary, Alberta: British Railway Modellers of North America.

Custodial History:

For custodial history see the collection level description of the Lawrence Stuckey collection.

Scope and Content:

Great Northern Railway crane on Souris River bridge, Bunclody, Manitoba.

Notes: [Combined] copy negative.

Name Access: Brandon, Saskatchewan & Hudson's Bay Railway
Great Northern Railway

Subject Access: cranes
railroads
railways
manmade geographic features
bridges
Great Northern Railway from Church's Ferry ND to Brandon MB

Repro Restriction: The McKee Archives is the copyright holder for the Stuckey materials.

Storage Location: Lawrence Stuckey collection

Images



Great Northern (BS&HB) Railway Bridge at Bunclody

<http://archives.brandonu.ca/en/permalink/descriptions9989>

Part Of: RG 11 Lawrence Stuckey fonds

Description Level: Item

Series Number: 3.1

Item Number: 1-2002.3.1PE12

Accession Number: 1-2002

GMD: graphic
Date Range: 1930
Physical Description: 3 1/2" x 5"
Material Details: Negative

History /

Biographical:

According to Stuckey and Bain (1996), "The Brandon, Saskatchewan & Hudson's Bay Railway was built and operated as a totally owned subsidiary of the Great Northern Railway. Construction commenced in late 1905 and by the end of 1905, less than a mile of track had been laid north of the boundary at St. John. In 1906, the remaining 68.6 miles to Brandon were laid and service commenced that year. During the Depression of the 1930s, traffic declined significantly and the entire branch was abandoned in 1936. Over much of the branch's length, the ties and rails were laid on the prairie without ballast and today little remains of the line apart from traces where there were cuts and bridges." (p. 18)

Stuckey, L. A., & Bain, D. M. (1996). The Great Northern and Northern Pacific railways in Canada. Calgary, Alberta: British Railway Modellers of North America.

Custodial History:

For custodial history see the collection level description of the Lawrence Stuckey collection.

Scope and Content:

Great Northern (BS&HB) Railway bridge crossing the Souris River at Bunclody, Manitoba.

Notes: [Combined] copy negative
From water level.

Name Access: Brandon, Saskatchewan & Hudson's Bay Railway
Great Northern Railway

Subject Access: railroads
railways
manmade geographic features
bridges
Great Northern Railway from Church's Ferry ND to Brandon MB

Repro Restriction: The McKee Archives is the copyright holder for the Stuckey materials.

Storage Location: Lawrence Stuckey collection

Images



Great Northern (BS&HB) Railway Bridge at Bunclody

<http://archives.brandonu.ca/en/permalink/descriptions9990>



Part Of: RG 11 Lawrence Stuckey fonds
Description Level: Item
Series Number: 3.1
Item Number: 1-2002.3.1PE13
Accession Number: 1-2002
GMD: graphic
Date Range: 1930
Physical Description: 3 1/2" x 5"
Material Details: Negative

History /

Biographical:

According to Stuckey and Bain (1996), "The Brandon, Saskatchewan & Hudson's Bay Railway was built and operated as a totally owned subsidiary of the Great Northern Railway. Construction commenced in late 1905 and by the end of 1905, less than a mile of track had been laid north of the boundary at St. John. In 1906, the remaining 68.6 miles to Brandon were laid and service commenced that year. During the Depression of the 1930s, traffic declined significantly and the entire branch was abandoned in 1936. Over much of the branch's length, the ties and rails were laid on the prairie without ballast and today little remains of the line apart from traces where there were cuts and bridges." (p. 18)

Stuckey, L. A., & Bain, D. M. (1996). The Great Northern and Northern Pacific railways in Canada. Calgary, Alberta: British Railway Modellers of North America.

Custodial History:

For custodial history see the collection level description of the Lawrence Stuckey collection.

Scope and Content:

Great Northern (BS&HB) Railway bridge crossing the Souris River at Bunclody, Manitoba.

Notes: [Combined] copy negative
overview from hillside
Includes road bridge.

Name Access: Brandon, Saskatchewan & Hudson's Bay Railway
Great Northern Railway

Subject Access: railroads
railways
manmade geographic features
bridges
Great Northern Railway from Church's Ferry ND to Brandon MB

Repro Restriction: The McKee Archives is the copyright holder for the Stuckey materials.

Storage Location: Lawrence Stuckey collection

Images





Great Northern (BS&HB) Train in Deep Snow

<http://archives.brandonu.ca/en/permalink/descriptions9991>

Part Of: RG 11 Lawrence Stuckey fonds

Description Level: Item

Series Number: 3.1

Item Number: 1-2002.3.1PE14

Accession Number: 1-2002

GMD: graphic

Date Range: [between 1906 and 1936]

Physical Description: 3 1/2" x 5"

Material Details: Negative

History /

Biographical:

According to Stuckey and Bain (1996), "The Brandon, Saskatchewan & Hudson's Bay Railway was built and operated as a totally owned subsidiary of the Great Northern Railway. Construction commenced in late 1905 and by the end of 1905, less than a mile of track had been laid north of the boundary at St. John. In 1906, the remaining 68.6 miles to Brandon were laid and service commenced that year. During the Depression of the 1930s, traffic declined significantly and the entire branch was abandoned in 1936. Over much of the branch's length, the ties and rails were laid on the prairie without ballast and today little remains of the line apart from traces where there were cuts and bridges." (p. 18)

Stuckey, L. A., & Bain, D. M. (1996). The Great Northern and Northern Pacific railways in Canada. Calgary, Alberta: British Railway Modellers of North America.

Custodial History:

For custodial history see the collection level description of the Lawrence Stuckey collection.

Scope and Content:

Great Northern (BS&HB) Railway train in deep snow.

Notes: From the collection of Gilford Copeland of Buncloody, Manitoba
[Combined] copy negative LAS.

Name Access: Brandon, Saskatchewan & Hudson's Bay Railway
Great Northern Railway

Subject Access: railroads
railways
locomotives
Great Northern Railway from Church's Ferry ND to Brandon MB

Repro Restriction: The McKee Archives is the copyright holder for the Stuckey materials.

Storage Location: Lawrence Stuckey collection

Images

