

S. J. McKee Archives



Graham site 2004 - summary information

<http://archives.brandonu.ca/en/permalink/descriptions11888>

Part Of:	RG 7 Beverley Nicholson fonds
Description Level:	sub sub sub series
Series Number:	1.4.1.1
Accession Number:	1-2010
GMD:	multiple media
Date Range:	2004
Material Details:	Field journals have been scanned in multi-page PDF files. Artifact catalogues are PDF files in spreadsheet format. Photographs are in jpeg format.

History /

Biographical:

The Graham site was initially designated as a separate site early in the testing of the Crepeele locale due to what appeared to be a distinction between Early and Late Woodland ceramics. Subsequent testing has shown that this distinction was premature and that the cultural mosaic represented in the western section of the Crepeele locale does not readily separate in this manner.

Scope and Content:


Sub-sub-sub series contains: Summary information of field methodology, number and co-ordinates of excavations, personnel and their staff position.


Name Access:	Graham site 2004 - summary information
Subject Access:	Archaeology Crepeele locale Graham site DiMe-30 Graham site 2004

Documents

ARCH 1.1 Crepeele Locale
1.4 Graham site 2004-20
1.4.1 Graham 2004
1.4.1.1 Summary Information
Core Unit: Thomas Phipps, Core Wagon Culture and Andrew Richards
Graham 2004 1.4.1.1
Excavation Unit: Catalogue Coordinates
Site 1: Phipps
Site 2: Richards
Excavation: Thomas Phipps & Andrew Richards
The units 1 and 2 were excavated with the Crepeele site in 2004 and were re-excavated in the Graham site 2004-20 keeping the same unit numbers.

1.4.1.1_Graham04_Summary.pdf

 Read PDF

 Download PDF



Graham site 2004 - field journals

<http://archives.brandonu.ca/en/permalink/descriptions11890>

Part Of: RG 7 Beverley Nicholson fonds
Description Level: sub sub sub series
Series Number: 1.4.1.2
Accession Number: 1-2010
GMD: multiple media
Date Range: 2004
Material Details: Field journals have been scanned in multi-page PDF files.
History /
Biographical:

Graham units 9 and 14 were excavated with the Crepeele site in 2004 and were reassigned to the Graham site DiMe-30 keeping the same unit numbers.

Field journals from 2004 contain notes concerning the Graham, Sarah and Atkinson sites. The relevant page numbers are noted.

Scope and Content:

Record of daily observations at the site including: excavation methods, items recovered, features, local environment and weather.

Name Access: Graham site 2004 - field journals
Subject Access: Archaeology
Crepeele locale
Graham site DiMe-30
Graham site 2004



Graham site 2005 - summary information

<http://archives.brandonu.ca/en/permalink/descriptions11905>

Part Of: RG 7 Beverley Nicholson fonds
Description Level: sub sub sub series
Series Number: 1.4.2.1
Accession Number: 1-2010
GMD: multiple media
Date Range: 2005
Material Details: Field journals have been scanned in multi-page PDF files. Artifact catalogues are PDF files in spreadsheet format. Photographs are in jpeg format.

History /

Biographical:

The Graham site is located south of the Crepeelee site. Due to the close proximity the Graham and Crepeelee sites have both been the site of the Brandon University Archaeological Field School.

In 2005 both sites were excavated as part of the Field School experience instructed by Denise Ens with teaching assistant James Graham Six units (XU 1-6) were excavated at the Graham site.

Recoveries included faunal (mostly bison), lithics (points, scrapers), and ceramics.

Scope and Content:

Sub-sub-sub series contains: Summary information of field methodology, number and co-ordinates of excavations, personnel and their staff position.

- Name Access:
- Graham site 2005 - summary information
- Subject Access:
- Archaeology
- Crepeelee locale
- Graham site DiMe-30
- Graham site 2005

Documents

ARCH 1.1 Crepeelee Locale

1.2 Graham Site 2005 - 207

1.4.2.1 Graham 2005

1.4.2.1 Summary Information

Field School: Instructor Denise Ens, Assistant James Graham

Excavation Unit	Cartographic Coordinates	Excavator
XU 1	1100070N	Michael Stoddard
XU 2	1100070N	Michael Stoddard
XU 3	1100070N	Michael Stoddard
XU 4	1100070N	James Graham
XU 5	1100070N	Kate Thompson
XU 6	1100070N	Denise E. Ens

1.4.2.1_Graham05_Summary.pdf

 Read PDF

 Download PDF



Graham site 2005 - field journals

<http://archives.bradonu.ca/en/permalink/descriptions11906>

Part Of: RG 7 Beverley Nicholson fonds
Description Level: sub sub sub series
Series Number: 1.4.2.2
Accession Number: 1-2010
GMD: multiple media
Date Range: 2005
Material Details: Field journals have been scanned in multi-page PDF files.

History /

Biographical:

The Graham site is located south of the Crepeele site. Due to the close proximity the Graham and Crepeele sites have both been the site of the Brandon University Archaeological Field School.

In 2005 both sites were excavated as part of the Field School experience instructed by Denise Ens with teaching assistant James Graham. Six units (XU 1-6) were excavated at the Graham site.

Field journals from 2005 contain notes concerning the Graham and Crepeele sites.

Scope and Content:

Record of daily observations at the site including: excavation methods, items recovered, features, local environment and weather.

Name Access: Graham site 2005 - field journals
Subject Access: Archaeology
Crepeele locale
Graham site DiMe-30
Graham site 2005



Graham site 2006 - summary information

<http://archives.bradonu.ca/en/permalink/descriptions11923>

Part Of: RG 7 Beverley Nicholson fonds
Description Level: sub sub sub series
Series Number: 1.4.3.1
Accession Number: 1-2010
GMD: multiple media
Date Range: 2006
Material Details: Field journals have been scanned in multi-page PDF files. Artifact catalogues are PDF files in spreadsheet format. Photographs are in jpeg format.

History /

Biographical:

The Graham site is located south of the Crepeele site. Due to the close proximity the Graham and Crepeele sites have both been the site of the Brandon University Archaeological Field School.

In 2006 a small Brandon University Archaeology Field School was conducted at the Graham site. Four excavations (XU 7, 8 15 & 16) were completed with Denise Ens Instructor and Jessica MacKenzie Teaching Assistant.

Recoveries included faunal (mostly bison), lithics and ceramicsRecoveries included faunal (mostly bison), lithics (points, scrapers), and ceramics.

Scope and Content:

Sub-sub-sub series contains: Summary information of field methodology, number and co-ordinates of excavations, personnel and their staff position.

Name Access: Graham site 2006 - summary information

Subject Access: Archaeology

 Crepeele locale

 Graham site DiMe-30

 Graham site 2006

Documents

ABCH 1.1 Crepeele Locale
1.1.1 Graham Site 2006 - 2007
1.1.2 Graham 2006/
1.1.3 Summary Information
Brandon University Archaeology Field School: Denise Ens Instructor,
Jessica MacKenzie Assistant

Excavation Unit	Grid/Spot Coordinates	Excavator
XU 7	11152127N	Denise Ens
XU 8	11152127N	Denise Ens
XU 15	11152127N	Denise Ens
XU 16	11152127N	Denise Ens

1.4.3.1_
Graham06_Summary.p
df

Read PDF

Download PDF



Graham site 2006 - field journals

<http://archives.brandonu.ca/en/permalink/descriptions11924>

Part Of: RG 7 Beverley Nicholson fonds
Description Level: sub sub sub series
Series Number: 1.4.3.2
Accession Number: 1-2010
GMD: multiple media
Date Range: 2006
Material Details: Field journals have been scanned in multi-page PDF files.
History /
Biographical:

In 2006 a small Brandon University Archaeology Field School was conducted at the Graham site. Four excavations (XU 7, 8 15 & 16) were completed with Denise Ens Instructor and Jessica MacKenzie Teaching Assistant.

Field journals from 2006 contain notes concerning the Graham and Crepeele sites.

Scope and Content:

Record of daily observations at the site including: excavation methods, items recovered, features, local environment and weather.

Name Access: Graham site 2006 - field journals
Subject Access: Archaeology
Crepeele locale
Graham site DiMe-30
Graham site 2006



Graham site 2008 - summary information

<http://archives.brandonu.ca/en/permalink/descriptions11951>

Part Of: RG 7 Beverley Nicholson fonds
Description Level: sub sub sub series
Series Number: 1.4.4.1
Accession Number: 1-2010
GMD: multiple media
Date Range: 2008
Material Details: Field journals have been scanned in multi-page PDF files. Artifact catalogues are PDF files in spreadsheet format. Photographs are in jpeg format.

History /

Biographical:

In 2008 Brandon University Archaeology returned to the Crepeelee locale to conduct further testing at the Graham and Crepeelee sites. Four units (XU 47-49 & 53) were excavated at Graham 2008 in order to collect samples and add further data to previous excavations. The usual excavation methodology was employed.

The small crew was directed by Bev Nicholson with Crew of Bill Foy, Andrew Lints & Kim Harrison

Recoveries included faunal (mostly bison), lithics and ceramics.

Scope and Content:

Sub-sub-sub series contains: Summary information of field methodology, number and co-ordinates of excavations, personnel and their staff position.


Name Access: Graham site 2008 - summary information


Subject Access: Archaeology
 Crepeelee locale
 Graham site DiMe-30
 Graham site 2008

Documents

ABCH 1.1 Crepeelee Locale
1.4 Graham Site 2008 - 207
1.4.4 Graham 2008
1.4.4.1 Summary Information
Director: Bev Nicholson with Crew of Bill Foy, Andrew Lints & Kim Harrison
Excavation Unit Coordinates Excavator
XU 47 472524N Bill Foy
XU 48 472524N Andrew Lints & Bev Nicholson
XU 49 472524N Kim Harrison & Bev Nicholson
XU 53 494024W Bill Foy
Four units were excavated at Graham 2008 in order to collect samples and add further data to previous excavations. The usual excavation methodology was employed.

1.4.4.1_Graham08_Summary.pdf

 Read PDF

 Download PDF



Graham site 2008 - field journals

<http://archives.brandonu.ca/en/permalink/descriptions11959>

Part Of: RG 7 Beverley Nicholson fonds
Description Level: sub sub sub series
Series Number: 1.4.4.2
Accession Number: 1-2010
GMD: multiple media
Date Range: 2008
Material Details: Field journals have been scanned in multi-page PDF files.

History /

Biographical:

In 2008 Brandon University Archaeology returned to the Crepeele locale to conduct further testing at the Graham and Crepeele sites. Four units (XU 47-49 & 53) were excavated at Graham 2008 in order to collect samples and add further data to previous excavations. The usual excavation methodology was employed.

The small crew was directed by Bev Nicholson with Crew of Bill Foy, Andrew Lints & Kim Harrison

Recoveries included faunal (mostly bison), lithics and ceramics.

Scope and Content:

Record of daily observations at the site including: excavation methods, items recovered, features, local environment and weather.

Name Access: Graham site 2008 - field journals
Subject Access: Archaeology
Crepeele locale
Graham site DiMe-30
Graham site 2008



Crepeele site 2008 - Andrew Lints field journal

<http://archives.brandonu.ca/en/permalink/descriptions11963>

Part Of: RG 7 Beverley Nicholson fonds
Description Level: sub sub sub series
Series Number: 1.2.5.2
File Number: 2
Accession Number: 1-2010
GMD: multiple media
Date Range: 2008
Physical Description: 13 pages
Material Details: Field journals have been scanned in multi-page PDF files.

History /

Biographical:

The Crepeele site was identified from the results of the Casselman survey and excavated in 2003, 2004, 2005 and 2007.

In 2008 a small crew under the direction of Bev Nicholson returned to the site to gather further samples and verify profiles. Three units (XU 50, 51 and 52) were excavated. As well the Graham site 2008 was also excavated.

The field journals contain information about both the Crepeele and Graham sites 2008.

Scope and Content:

Record of daily observations at the site including: excavation methods, items recovered, features, local environment and weather.

Name Access: Crepeele site 2008 - Andrew Lints field journal

Subject Access: Archaeology
Crepeele locale
Crepeele site DiMe-29
Crepeele site 2008

Documents



Crepeele site 2003 - summary information

<http://archives.brandonu.ca/en/permalink/descriptions11965>

Part Of: RG 7 Beverley Nicholson fonds

Description Level: sub sub sub series

Series Number: 1.2.1.1

Accession Number: 1-2010

GMD: multiple media

Date Range: 2003

Material Details: Field journals have been scanned in multi-page PDF files. Artifact catalogues are PDF files in spreadsheet format. Photographs are in jpeg format.

History /
Biographical:

The Crepeele site was identified from the results of the Casselman survey. The site is located within the Crepeele locale approximately 400 meters to the west of the Sarah site. The units were excavated by Crew Chief James Graham and the crew from the survey.

The Crepeele site was excavated in 2003 as Crepeele 3 with the units numbered as units 10, 11, 12 & 13. These numbers have been changed on the catalogue to XU 110 – 113, due to duplication in 2005. Corresponding documents have been changed but there may be some reference to the initial numbers in the field journals.

The artifacts recovered from these four excavations are faunal (animal bone), mainly bison, lithic materials (stone tools and flakes) and some ceramic (pottery). The artifact catalogue has over 600 records.

Scope and Content:

Sub-sub-sub series contains: Summary information of field methodology, number and co-ordinates of excavations, personnel and their staff position; Field journals are daily records of recoveries, features and activities at the site; Site records include excavation level and unit summaries, feature sheets, profiles; sample records and maps; Artifact catalogues are lists and identifications of all artifacts recovered; Photographs are of excavation units, features, the landscape and personnel.

Name Access: Crepeele site 2003 - summary information

Subject Access: Archaeology

Crepeele locale

Crepeele site DiMe-29

Crepeele site 2003

Crepeele site 2003 - summary information

Documents

ARCH 1.1 Crepeele Locals

1.2.1 Crepeele Site 2003 - 20

1.2.1.1 Crepeele 2003

1.2.1.1.1 Summary Information

The Crepeele site is located within the Crepeele locale and approximately 400 meters to the west of the Sarah site. Crepeele site was excavated in 2003 as Crepeele 3. The above plot of 100m x 100m was used for the survey was above and for the excavation. A locale above of 100m was then established for the site and given the coordinates of 500000000.

Crepeele site 2003

The site was originally recorded as Units 10, 11, 12 & 13. These numbers have been changed on the catalogue to XU 110 – 113, due to duplication in 2005.

Crew Chief James Graham

Excavation Unit	Original Crew	Catalogue Crew	Excavator
XU 110	40001910	50000000	Local Crewman
XU 111	40001910	50000000	Local Crewman
XU 112	40001910	50000000	Local Crewman
XU 113	40001910	50000000	Local Crewman

1.2.1.1_
C03_summary.pdf

Read PDF

Download PDF



Lovstrom Block C - site co-ordinates

<http://archives.brandonu.ca/en/permalink/descriptions12518>

Part Of: RG 7 Beverley Nicholson fonds

Description Level: sub sub sub series

Series Number: 3.4.1.1

Accession Number: 1-2010

GMD: multiple media

Date Range: 1987

Material Details: Field journals have been scanned in multi-page PDF files. Artifact catalogues are PDF files in spreadsheet format. Photographs are in jpeg format.

History /

Biographical:

Large scale excavations of five block sites took place in 1987 under the direction of Bev Nicholson with Jane Gibson as crew chief. Block C consisted of nine excavation units. Miggs Green was Block C assistant.

Scope and Content:


Sub-sub-sub series contains: Summary information of field methodology, number and co-ordinates of excavations, personnel and their staff position.

Name Access: Lovstrom Block C - site co-ordinates

Subject Access: Archaeology
Lovstrom locale
Lovstrom Block C

Documents

3.4.1.1_Sum.pdf

 Read PDF

 Download PDF



Lovstrom Block D 1987 - site co-ordinates

<http://archives.brandonu.ca/en/permalink/descriptions12542>

Part Of:	RG 7 Beverley Nicholson fonds
Description Level:	sub sub sub series
Series Number:	3.5.1.1
Accession Number:	1-2010
GMD:	multiple media
Date Range:	1987
Material Details:	Field journals have been scanned in multi-page PDF files. Artifact catalogues are PDF files in spreadsheet format. Photographs are in jpeg format.

History /

Biographical:

Large scale excavations of five block sites took place in 1987 under the direction of Bev Nicholson with Jane Gibson as crew chief. Block D consisted of 2 excavation units.

Scope and Content:

Sub-sub-sub series contains: Summary information of field methodology, number and co-ordinates of excavations, personnel and their staff position.

Name Access:	Lovstrom Block D 1987 - site co-ordinates
Subject Access:	Archaeology
	Lovstrom locale
	Lovstrom Block D

Documents

ABC W & L Lovstrom Locale 1987

3.5.1.1 Summary Information:

Large scale excavations of five block sites took place in 1987 under the direction of Bev Nicholson with Jane Gibson as crew chief.

Block D consisted of 2 excavation units. The initial plan was modified as 1987, a subsequent plan with the co-ordinates of 1987/1988 was used in the field as a complete replacement. The final co-ordinates were used in 1988.

Excavation	Original Co-ords	Catalogue Co-ords	Crew
3.5.1.1	541642.00	1564200	Bev Nicholson
3.5.1.2	541642.00	1570420	John Davidson

3.5.1.1_Sum.pdf

 Read PDF

 Download PDF



Lovstrom Block D 1988 - site co-ordinates

<http://archives.brandonu.ca/en/permalink/descriptions12555>

Part Of: RG 7 Beverley Nicholson fonds

Description Level: sub sub sub series

Series Number: 3.5.2.1

Accession Number: 1-2010

GMD: multiple media

Date Range: 1988

Material Details: Field journals have been scanned in multi-page PDF files. Artifact catalogues are PDF files in spreadsheet format. Photographs are in jpeg format.

History /

Biographical:

Large scale excavations of five block sites took place in 1988 under the direction of Bev Nicholson with Ian Kuijt as crew chief. Four excavation units were added to Block D.

Scope and Content:

Sub-sub-sub series contains: Summary information of field methodology, number and co-ordinates of excavations, personnel and their staff position.

Name Access: Lovstrom Block D 1988 - site co-ordinates

Subject Access: Archaeology
Lovstrom locale
Lovstrom Block D

Documents

ABC W & L Lovstrom Locale 1988
3.5.2.1 Lovstrom Block D
3.5.2.1 Summary Information

Excavations continued in 1988 under the direction of Bev Nicholson with Ian Kuijt as crew chief.

Four additional excavation units were excavated in Block D. The total dataset was established as 3.5.2.1, a sub-series. Further details with the coordinates of 3.5.2.1 are used in further complete cataloguing. The data was created from the site file.

Excavation	Original Crew	Catalogue Crew	Crew
3.5.2.1	3.5.2.1/1	3.5.2.1/1	Local/Local
3.5.2.2	3.5.2.2/1	3.5.2.2/1	Local/Local
3.5.2.3	3.5.2.3/1	3.5.2.3/1	Local/Local
3.5.2.4	3.5.2.4/1	3.5.2.4/1	Local/Local

Further located in 3.5.2.1 and 3.5.2.2

Mapquest Map/Photo/Link/Location

3.5.2.1_Sum.pdf

Read PDF

Download PDF



Lovstrom Block E 1987 - site co-ordinates

<http://archives.brandonu.ca/en/permalink/descriptions12569>

Part Of: RG 7 Beverley Nicholson fonds

Description Level: sub sub sub series

Series Number: 3.6.1.1

Accession Number: 1-2010

GMD: multiple media

Date Range: 1987

Material Details: Field journals have been scanned in multi-page PDF files. Artifact catalogues are PDF files in spreadsheet format. Photographs are in jpeg format.

History /

Biographical:

Large scale excavations of five block sites took place in 1987 under the direction of Bev Nicholson with Jane Gibson as crew chief. Block E consisted of 7 excavation units.

Scope and Content:

Sub-sub-sub series contains: Summary information of field methodology, number and co-ordinates of excavations, personnel and their staff position.

Name Access: Lovstrom Block E 1987 - site co-ordinates

Subject Access: Archaeology
Lovstrom locale
Lovstrom Block E

Documents

ABC W & L Lovstrom Locale 1987

ABC Lovstrom Block E

ABC Lovstrom Block E 1987

Summary Information:

Large scale excavations of five block sites took place in 1987 under the direction of Bev Nicholson with Jane Gibson as crew chief.

Block E consisted of 7 excavation units. The initial plan was established as 1987, a subsequent plan was established as 1988, and a subsequent plan was established as 1989. The plan was revised and 1987 was replaced as 1988, and 1988 was replaced as 1989.

Excavation	Original Crew	Original Crew	Crew
101	1987/01/01	1987/01/01	Bev Nicholson/Jane Gibson
102	1987/01/01	1987/01/01	Bev Nicholson
103	1987/01/01	1987/01/01	Bev Nicholson
104	1987/01/01	1987/01/01	Bev Nicholson
105	1987/01/01	1987/01/01	Bev Nicholson
106	1987/01/01	1987/01/01	Bev Nicholson
107	1987/01/01	1987/01/01	Bev Nicholson

3.6.1.1_Sum.pdf

Read PDF

Download PDF

Crepeele site 2008 - summary information

<http://archives.brandonu.ca/en/permalink/descriptions11773>

Part Of: RG 7 Beverley Nicholson fonds

Description Level: sub sub sub series



Series Number: 1.2.5.1
Accession Number: 1-2010
GMD: multiple media
Date Range: 2008
Material Details: Field journals have been scanned in multi-page PDF files. Artifact catalogues are PDF files in spreadsheet format. Photographs are in jpeg format.

History /

Biographical:

The Crepeele site was identified from the results of the Casselman survey and excavated in 2003, 2004, 2005 and 2007.

In 2005 and 2007 the Brandon University Archaeology Field School was held at the Crepeele site in the Crepeele locale.

In 2008 a small crew returned to the site to gather further samples and verify profiles. Three units (XU 50, 51 and 52) were excavated with faunal (animal bone), lithics, fire cracked rock, diagnostic lithics and ceramics recovered from the site. There are 455 records in the artifact catalogue.

Scope and Content:

Sub-sub-sub series contains: Summary information of field methodology, number and co-ordinates of excavations, personnel and their staff position.

Name Access: Crepeele site 2008 - summary information

Subject Access: Archaeology
Crepeele locale
Crepeele site DiMe-29
Crepeele site 2008

Documents

1.2.5.1_C08_summary.pdf

 Read PDF

 Download PDF



Crepeelee site 2007 - field journals

<http://archives.brandonu.ca/en/permalink/descriptions11774>

Part Of: RG 7 Beverley Nicholson fonds
Description Level: sub sub sub series
Series Number: 1.2.4.2
Accession Number: 1-2010
GMD: multiple media
Date Range: 2007
Material Details: Field journals have been scanned in multi-page PDF files.

History /

Biographical:

In 2007 the Brandon University Archaeology Field School was held at the Crepeelee site in the Crepeelee locale. Denise Ens instructed the school with Kate Decter & Jessica MacKenzie assistants.

Seventeen units were excavated XU30 - 46. Faunal (animal bone), lithics, fire cracked rock, diagnostic lithics and ceramics were recovered from the site. There are over 3050 records in the catalogue.

Scope and Content:

Record of daily observations at the site including: excavation methods, items recovered, features, local environment and weather.

Name Access: Crepeelee site 2007 - field journals
Subject Access: Archaeology
Crepeelee locale
Crepeelee site DiMe-29
Crepeelee site 2007



Crepeelee site 2008 - field journals

<http://archives.brandonu.ca/en/permalink/descriptions11808>

Part Of: RG 7 Beverley Nicholson fonds
Description Level: sub sub sub series
Series Number: 1.2.5.2
Accession Number: 1-2010
GMD: multiple media
Date Range: 2007
Material Details: Field journals have been scanned in multi-page PDF files.
History /
Biographical:

The Crepeelee site was identified from the results of the Casselman survey and excavated in 2003, 2004, 2005 and 2007.

In 2008 a small crew under the direction of Bev Nicholson returned to the site to gather further samples and verify profiles. Three units (XU 50, 51 and 52) were excavated. As well the Graham site 2008 was also excavated.

The field journals contain information about both the Crepeelee and Graham sites.

Scope and Content:

Record of daily observations at the site including: excavation methods, items recovered, features, local environment and weather.

Name Access: Crepeelee site 2008 - field journals
Subject Access: Archaeology
Crepeelee locale
Crepeelee site DiMe-29
Crepeelee site 2008



Crepeelee site 2008 - Bev Nicholson field journal

<http://archives.brandonu.ca/en/permalink/descriptions11809>

Part Of: RG 7 Beverley Nicholson fonds
Description Level: sub sub sub series
Series Number: 1.2.5.2
File Number: 1
Accession Number: 1-2010
GMD: multiple media
Date Range: 2008
Physical Description: 6 pages
Material Details: Field journals have been scanned in multi-page PDF files.

History /

Biographical:

The Crepee site was identified from the results of the Casselman survey and excavated in 2003, 2004, 2005 and 2007.

In 2008 a small crew under the direction of Bev Nicholson returned to the site to gather further samples and verify profiles. Three units (XU 50, 51 and 52) were excavated. As well the Graham site 2008 was also excavated.

The field journals contain information about both the Crepee and Graham sites 2008.

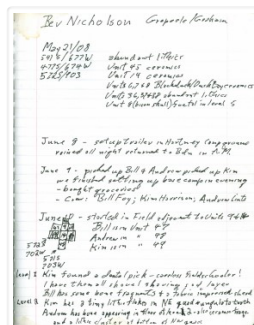
Scope and Content:

Record of daily observations at the site including: excavation methods, items recovered, features, local environment and weather.

Name Access: Crepee site 2008 - Bev Nicholson field journal

Subject Access: Archaeology
Crepee locale
Crepee site DiMe-29
Crepee site 2008

Documents



1.2.5.2.1_C08_BNicholson.pdf

 Read PDF

 Download PDF



Crepee site 2008 - Bill Foy field journal

<http://archives.brandonu.ca/en/permalink/descriptions11812>

Part Of: RG 7 Beverley Nicholson fonds

Description Level: sub sub sub series

Series Number: 1.2.5.2

File Number: 4

Accession Number: 1-2010

GMD: multiple media

Date Range: 2008
Physical Description: 20 pages
Material Details: Field journals have been scanned in multi-page PDF files.
History /
Biographical:

The Crepeele site was identified from the results of the Casselman survey and excavated in 2003, 2004, 2005 and 2007.

In 2008 a small crew under the direction of Bev Nicholson returned to the site to gather further samples and verify profiles. Three units (XU 50, 51 and 52) were excavated. As well the Graham site 2008 was also excavated.

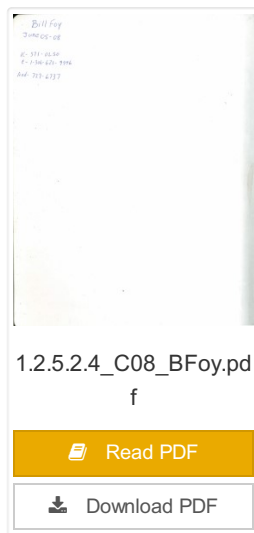
The field journals contain information about both the Crepeele and Graham sites 2008.

Scope and Content:

Record of daily observations at the site including: excavation methods, items recovered, features, local environment and weather.

Name Access: Crepeele site 2008 - Bill Foy field journal
Subject Access: Archaeology
Crepeele locale
Crepeele site DiMe-29
Crepeele site 2008

Documents





Crepeele site 2007 - summary information

<http://archives.brandonu.ca/en/permalink/descriptions11813>

Part Of: RG 7 Beverley Nicholson fonds

Description Level: sub sub sub series

Series Number: 1.2.4.1

Accession Number: 1-2010

GMD: multiple media

Date Range: 2007

Material Details: Field journals have been scanned in multi-page PDF files. Artifact catalogues are PDF files in spreadsheet format. Photographs are in jpeg format.

History /

Biographical:

In 2007 the Brandon University Field School was held at both the Crepeele site in the Crepeele locale. Denise Ens instructed the school with Jessica McKenzie and Kate Decter as teaching assistants.

Seventeen units were excavated (XU3 - 46). Faunal (animal bone), lithics, fire cracked rock, diagnostic lithics and ceramics were recovered from the site.

Scope and Content:

Sub-sub-sub series contains: Summary information of field methodology, number and co-ordinates of excavations, personnel and their staff position.

Name Access: Crepeele site 2007 - summary information


Subject Access: Archaeology
Crepeele locale
Crepeele site DiMe-29
Crepeele site 2007


Documents

ABR 30.1.1 Crepeele Locale
1.2.4 Crepeele Site DiMe 29
1.2.4.1 Summary Information
Brandon University Archaeology Field School - Denise Ens Instruction, Kate Decter
At Brandon University Instruction

Excavation Unit	Cartographic Coordinates	Excavator
XU 3	430400N 710W	Denise Ens
XU 4	430400N 710W	Denise Ens
XU 5	430400N 710W	Denise Ens
XU 6	430400N 710W	Denise Ens
XU 7	430400N 710W	Denise Ens
XU 8	430400N 710W	Denise Ens
XU 9	430400N 710W	Denise Ens
XU 10	430400N 710W	Denise Ens
XU 11	430400N 710W	Denise Ens
XU 12	430400N 710W	Denise Ens
XU 13	430400N 710W	Denise Ens
XU 14	430400N 710W	Denise Ens
XU 15	430400N 710W	Denise Ens
XU 16	430400N 710W	Denise Ens
XU 17	430400N 710W	Denise Ens
XU 18	430400N 710W	Denise Ens
XU 19	430400N 710W	Denise Ens
XU 20	430400N 710W	Denise Ens
XU 21	430400N 710W	Denise Ens
XU 22	430400N 710W	Denise Ens
XU 23	430400N 710W	Denise Ens
XU 24	430400N 710W	Denise Ens
XU 25	430400N 710W	Denise Ens
XU 26	430400N 710W	Denise Ens
XU 27	430400N 710W	Denise Ens
XU 28	430400N 710W	Denise Ens
XU 29	430400N 710W	Denise Ens
XU 30	430400N 710W	Denise Ens
XU 31	430400N 710W	Denise Ens
XU 32	430400N 710W	Denise Ens
XU 33	430400N 710W	Denise Ens
XU 34	430400N 710W	Denise Ens
XU 35	430400N 710W	Denise Ens
XU 36	430400N 710W	Denise Ens
XU 37	430400N 710W	Denise Ens
XU 38	430400N 710W	Denise Ens
XU 39	430400N 710W	Denise Ens
XU 40	430400N 710W	Denise Ens
XU 41	430400N 710W	Denise Ens
XU 42	430400N 710W	Denise Ens
XU 43	430400N 710W	Denise Ens
XU 44	430400N 710W	Denise Ens
XU 45	430400N 710W	Denise Ens
XU 46	430400N 710W	Denise Ens

1.2.4.1_C07_summary.
pdf

 Read PDF

 Download PDF