

S. J. McKee Archives



Western Manitoba Philharmonic Choir fonds

<http://archives.brandonu.ca/en/permalink/descriptions14288>

Part Of:	RG 5 Western Manitoba Manuscript Collection
Description Level:	Fonds
Accession Number:	8-2001, 13-2016
GMD:	multiple media
Date Range:	1965-1980, predominant 25 May 1965 - 30 September 1976
Physical Description:	12 cm textual records 6 b/w photographs (loose) 1 artefact
Physical Condition:	Some of the items in the scrapbook have come loose from their pages, some documents are stained from a liquid, likely coffee

History /

Biographical:

In 1965, Chris Verhoef, member of the Overture Concert Association, Allied Arts Centre, and Brandon Citizens' Committee for the Performing Arts, called for a meeting of Western Manitoba citizens interested in the prospect of a Philharmonic Choir for the region. The meeting took place on 26 May 1965; the steering committee that gathered, led by Margaret Goodman, undertook the formation of the Choir. The Choir would have an Executive consisting of at least four members, and a committee consisting of a minimum seven members. Each executive member would be elected on an annual basis. The Choir's executive, in collaboration with the conductor, would determine the choir's repertoire for the year. The establishment of the Western Manitoba Philharmonic Choir (WMPC) sought to encourage amateurs to sing for enjoyment, provide the opportunity for a choir to perform choral compositions in collaboration with a symphony orchestra and promote and sponsor the musical arts in the Western Manitoba region. Membership to the choir would be open to all citizens of the region, and members would be accepted based on the discretion of the conductor. The first meeting of prospective members took place on 27 September 1965 in St. Matthews Cathedral parish Hall where more than 90 people gathered and registered to become a member of the WMPC.

Chris Verhoef led the Western Manitoba Philharmonic Choir into its first season as President of the choir's Executive Committee. For the organization's first season, the WMPC hired two members of the Brandon College School of Music: Lucien Needham for the position of conductor and Louise Chapman for the position of accompanist. Brandon College, as well as other donors sponsored the choir for its first season. The Choir held its debut performance in collaboration with the Winnipeg Symphony Orchestra (WSO) on 12 March 1966, and the Choir's performance of Vivaldi's Gloria and Handel's Dettingen te Deum attracted an audience of more than 1400 people. The performance was well received by the public. The debut performance's success earned the Choir a recommendation for a grant from the Manitoba Centennial Corporation that would sponsor a special concert during the centennial year. Furthermore, the Canada Council supported the Winnipeg Symphony Orchestra, by the means of special funds, to make the Symphony's appearance with the Philharmonic Choir possible.

For the WMPC's second season, membership rose to 111 amateur singers. Verhoef

remained as President of the Executive, while the Brandon Citizens' Committee for the Performing Arts provided sponsorship. Following the Choir's performance of Schubert's Mass in Eb Major on 17 November 1966, the membership increased to 132 singers. On 20 January 1967, the WMPC's first taped broadcast was released over CBC and CKX. The broadcast's success resulted in an offer from CBC to record another broadcast for a similar release. The Kiwanis Club of Rivers invited the Choir to perform in Rivers on 25 January 1967. On 7 April 1967, the Choir performed Haydn's oratorio, *The Creation*, in the Brandon College Gymnasium.

The choir elected Murray Ames as President to lead it through its third and fourth seasons. In its third season, the WMPC, conducted by Leonard Mayoh, performed Handel's *Messiah* on 22 November 1967 in the Brandon University Gymnasium. The Choir's spring concert, named the "Chris Verhoef Memorial Concert," in honour of Chris Verhoef who had passed away December 1967, featured works by Bach, Brahms and Perry. Held on 9 March 1968, in the Brandon University Gymnasium, the concert featured Brandon University student James Stewart as soloist and was received with great praise. In addition to the memorial concert, the WMPC also established a \$500 scholarship for a Brandon University music student to honour Verhoef's substantial contribution to the community.

The first concert of the Western Manitoba Philharmonic Choir's fourth season was held on 10 December 1968, in the J.R.C. Evans Lecture Theatre at Brandon University and featured selections from Handel's *Messiah*. A piano trio comprised of Francis Chaplin (violin), Malcolm Tait (cello) and Gordon Macpherson (piano), as well as a brass trio, also performed at the choir's winter concert. In its fourth season, the WMPC performed two concerts in the second half of its season. On 15 February 1969, in cooperation with CKX Radio and Television, the choir performed works by Mozart, Hindemith, and Mahler in collaboration with the Winnipeg Symphony Orchestra conducted by George Cleve. Later in the season, the choir performed Brahms' *Requiem Mass*, once again in collaboration with the Winnipeg Symphony Orchestra.

Dr. R. Parker filled the position of President of the Executive for the duration of the Choir's fifth, sixth and seventh seasons. The fifth season saw the WMPC performing four concerts. Conducted by Leonard Mayoh, it opened its season on 11 October 1969 with a performance at the Grand Finale of the Grand Opening of the Western Manitoba Centennial Auditorium, performing the overture to Mozart's *The Magic Flute* and Beethoven's *Symphony No. 9*. Their Christmas concert, also conducted by Mayoh, took place on 10 December 1969. The Choir's third concert of its fifth season was held on 31 January 1970, in cooperation with CKX Radio and Television, and featured works by Mendelssohn, Ravel, and Schubert, in collaboration with the WSO under the direction of conductor George Cleve. The season concluded with another concert in collaboration with the WSO on 7 March 1970, conducted by Leonard Mayoh. This concert featured works by Vaughan Williams, Handel and Poulenc.

Seasons six and seven consisted of two concerts each. The Choir held its fifth annual Christmas Concert on 5 December 1970. Led by Leonard Mayoh, it performed its spring concert on 10 April 1971 in collaboration with members from the Winnipeg Symphony, featuring selections by Bach and Mozart in the Western Manitoba Centennial Auditorium. In its seventh season, the Choir performed Bach's *Christmas Oratorio* on 4 December 1971 in the Central United Church. For its final concert of the year, the WMPC revisited a piece that had been the main focus of its second season: Haydn's oratorio, *The Creation*. The Choir performed this Haydn masterwork on 8 April 1972 under the direction of Piero Gamba.

Helen Riesberry led the choir through its eighth and ninth seasons as President of the Executive. In its eighth season, the WMPC held its annual Christmas concert on 12 December 1972 in collaboration with the Winnipeg Symphony Orchestra in the style of a sing-along led by Mitch Miller. The choir's spring concert featured another masterwork, Beethoven's *Missa Solemnis*, conducted by Piero Gamba. The WMPC and members of the WSO performed the *Requiem Mass* on 28 April 1973 at the Western Manitoba Centennial Auditorium. Despite the lack of attendance at rehearsals since the Christmas concert, the WMPC presented an overall

effective performance of the challenging Requiem Mass.

In its ninth season, Derek Morphy took over the position of conductor from Leonard Mayoh. Morphy had his debut performance as conductor with the WMPC at the annual Christmas concert on 17 December 1973. In March 1974, in collaboration with members from the WSO, Morphy led the Choir in its performance of Mendelssohn's oratorio, *Elijah*, in the Western Manitoba Centennial Auditorium. Later in the season, the choir performed a concert entitled "Reflections," a choral programme for Lent and Easter, accompanied by organist Arthur Bower.

Nearing the end of its ninth season, the Philharmonic Choir encountered severe financial challenges. The Choir released a notice in the newspaper that the anticipated \$3000 grant from the Manitoba Arts Council had been cut to \$1000, leaving the Choir \$3100 in debt. The notice explained that the Choir needed funds in order to enable operation and continue hiring the WSO for concerts. The WMPC executive and committee held a Leonard Mayoh Night in an attempt to gain funds and donations. Although the Manitoba Arts Council raised the grant to \$2000 and the City of Brandon contributed \$500, the Choir's financial situation remained in a dire state as its ninth season came to a close.

The Choir elected Edith Hayden to lead it through its tenth and eleventh seasons as President of the Executive. The opening of the tenth season challenged the WMPC. In addition to its financial woes, the Choir's Executive struggled to overcome the lack of attendance at rehearsals and the shortage of male voices. The WMPC had experienced membership issues in earlier seasons as well. In its third season, despite a membership of 130 individuals, the choir had struggled to create a balanced sound due to a lack of male membership and therefore a lack of lower voices. In its sixth season, the Choir opened their concert year with an appeal for members. In an effort to improve the choir's financial affairs, the Choir Executive and conductor decided against hiring the Winnipeg Symphony Orchestra for the time being. In an attempt to improve the situation, Derek Morphy wrote a letter to the members of the Choir outlining his concern that he may not be meeting their expectations as a conductor but hoped to generate positive and hopeful prospects for the future of music-making together.

The Choir's annual Christmas concert featured a collaboration with the Brandon School Division Music Department and Brandon School Orchestra and Band Association, as well as dancers choreographed by Barbra Enhes. The WMPC performed Haydn's *Mass in D minor* at its spring concert on 27 April 1975, accompanied by Arthur Bower. By the end of the season, the Western Manitoba Philharmonic Choir's financial situation had begun to improve.

The WMPC hired conductor Peter Allen to lead the Choir through its final season of operation. The Choir held its annual Christmas concert in the Central United Church on 7 December 1975, and featured Vivaldi's *Gloria*, accompanied by pianist Barry Anderson. The choir performed Deller's *Psalm 148*, Telemann's *Cantata* for the Fourth Sunday after the Feast of the Three Kings, and Dvorak's *Stabat Mater* at its spring concert held at the Central United Church on 25 April 1976.

Despite its best efforts, the Western Manitoba Philharmonic Choir's first rehearsal of its twelfth season saw just 26 members in attendance. As a result of lack of membership, the Choir Executive decided to disband the WMPC for its 1976/1977 season, with plans to reassess the situation in September of 1977 for the prospect of a 1977/1978 season. Matters were further complicated by financial considerations; by June 1977 the choir's financial situation had worsened as a result of the administrative fees that the WMPC covered for the duration of its unexpected inactive 1976/1977 season. Unlike past years, there were not any ticket sales to cover such expenses.

Following its year off, membership interest in the Western Manitoba Philharmonic Choir did not increase and the decision was made not to return for another season. In 1980, the WMPC revoked its registration as an organization and officially ceased to exist.

Custodial History:

Records in the 8-2001 accession were donated to the McKee Archives in 2001, by three representatives of the Philharmonic Choir: Dr. Bill Paton, Botany Department, Brandon University; Mrs. Edith Hayden, WMPC President; and Mary Davidson WMPC Archives Committee. Records in accession 13-2016 were given to Terry Stamper in the School of Music by Marilyn Hayden and then transferred to the McKee Archives on September 21, 2015.

Scope and Content:

Fonds consists of records that document the origin, activities, and ultimate disbandment of the Western Manitoba Philharmonic Choir. These records were created and accumulated during the eleven year existence of the WMPC.

Records include: the organization's constitution and history from 1965-1968; financial records, which include grants received from the Manitoba Arts Council, Canada Council, and City of Brandon, as well as materials documenting the organization's financial struggles from 1974-1976; minutes from executive and committee meetings from 18 June 1973 to 24 June 1974; correspondence in the form of letters between the president of the executive and the choir members, and between the conductor of the choir and its members; membership lists from each season of the WMPC; and concert programmes from every major Christmas and Spring concert that the organization performed. Fonds also contains newspaper notices, advertisements and reviews of various performances, as well as posters advertising performances of the WMPC in the 1967/68, 1970/71, 1971/72 and 1973/74 seasons; the posters advertise the choir, collaborators, patrons and featured works.

Also included in the fonds is a scrapbook detailing the choir's history. Each page of the scrapbook is decorated with hand painted images of plants native to the southwestern Manitoba region. The scrapbook includes concert programs and photographs of the choir from all years of the organization's operation. The scrapbook also contains an assortment of informal photographs from various WMPC events. There are also six black and white group photos of the WMPC from various seasons.

Finally, the fonds contains one artifact, a leather bag/zippered file folder with "WMPC" printed on it.

Notes: History/Bio information was provided by representatives of the Western Manitoba Philharmonic Choir. Copies of the history can be found in the fonds. Description by Jessi Gilchrist (October 2016).

Name Access: Chris Verhoef
Margaret Goodman
St. Matthews Cathedral
Lucien Needham
Louise Chapman
Manitoba Centennial Corporation
Canada Council
Winnipeg Symphony Orchestra
Brandon College
Kiwanis Club
CKX
Helen Reisberry
Mary Donovan
Tom Inglis
Humphrey Davies
Muriel Bain

H.V. Kidd
Eileen Christ
Brandon College Auditorium
CBC Radio
J.M. Donovan
Murray Ames
Dr. R. Parker
Henry Stein
Ernie Pearn
Gerry Streuber
Dorothy McLean
Mayme Tucker
Margaret George
Bob Blair
Bud Keenan
Marilyn Johnston
Sister Mary Rose
Lou Brown
Jeanine Baker
Muriel Patmore
Leonard Mayoh
Jim Cory
Eric Davies
Phil Ricou
Elaine Dechka
Lester Spinaze
Archie Miller
High Rest
Lorna hamilton
Ruth Cutforth
Ollie Timkiw
Thelma Findogasson
A. Bayne
Dick Vanderveen
Lee Donnelly
M. Rogosin
Ken Nichols
Manitoba Arts Council
Piero Gamba
Mary Graham
Reuben Gurevich
Leonard Stone
Brandon Area Foundation
Arthur Bower
Derek Murphy

Judy Pringle
Irma Peters
John Martens
Robert Publow
Brandon Citizens' Committee for the Performing Arts
Brandon Musical Supply
P.A. Kennedy
Bond Books
Brandon Public Library
Phylis Thomson
Hilda Miller
Arthur Janzen
Walter Deller
Nora Needham
Jean Dorian
Margaret hammond
Eileen Blain
Brian Bailey
Brandon College Gymnasium
Brandon University School of Music
G.R. Rowe
Sylvia Richardson
Peter Koslowsky
Nelson Lohnes
James Stewart
Francis Chaplin
Malcolm Tait
Gordon Macpherson
J.R.C. Evans Lecture Theatre
Lorne Watson
Donald Henry
Lawrence Jones
Alice Hekster
Walter Hekster
Hilda Dridger
Elizabeth Grant
Dorothy Froese
Robert Ford
James Mendenhall
Colin Cooper
Allison Ryles
Joy Crawford
Audrey Farnell
Maxine Miller
Smith Miller

	Brandon Sun
	Barbra Ehnes
	Brandon School Division Music Department
	Brandon School Orchestra and Band Association
	Barbra Landry
Subject Access:	Brandon School of Rivers philharmonic choirs
	amateur choirs
	amateur musicians
	symphony orchestra
	philharmonic
	classical music performance ensemble
	cultural organizations
	music
	community organizations
Storage Location:	2001 accessions
Related Material:	School of Music records
	Lorne Watson collection
	Lawrence Jones collection
	Brandon Women's Musical Club fonds
	Francis Chaplin collection
	Brandon Festival of the Arts fonds
	Fred McGuinness collection
	CKX fonds
	Music and the Brandon Community collection



Southwest B Region Manitoba Women's Institute fonds

<http://archives.brandonu.ca/en/permalink/descriptions14294>

Part Of:	RG 5 Western Manitoba Manuscript Collection
Description Level:	Fonds
Accession Number:	12-2016
GMD:	multiple media
Physical Description:	18 cm textual records 4 b/w photographs
Physical Condition:	Some of the pages and photographs in the scrapbooks have become loose

History /

Biographical:

Southwest B "Region" Women's Institute is a regional board within Manitoba Women's Institute.

According to their website, Manitoba Women's Institute (MWI) operates under an umbrella structure of a provincial board and regional boards as directed in the Constitution and Bylaws. The provincial board serves to co-ordinate the activities of the organization on a provincial scale and link with other provincial, national, and international organizations. Regional boards are responsible for activities within their regions and for assisting with communication between the provincial board and the membership. Local institutes serve members in local communities or local geographic areas.

The Southwest B "Region" Women's Institute covers the area south of the Trans Canada Highway and from Killarney west to the Saskatchewan border. Historically it has encompassed locals from the following areas: Bardal, Boissevain, Broomhill, Dand, Deloraine, Dublin, Ebor, Elgin, Elva, Hartney, Kemnay, Lauder, Lyleton, Medora, Melita, Napinka, Pierson, Regent, Souris, Springvale, Tilston, Wakada and Whitewater.

Custodial History:

Records were in the possession of the Southwest B Region Women's Institute until their donation to the McKee Archives in 2014.

Scope and Content:

Fonds consists of records created by the Southwest B Region Women's Institute during the course of their activities and operations.

Records include: eight minute books (1926-1997); a small scribbler listing Convention and some Board meeting attendance (2001-2013); and two Treasurer's/cash record books (1940-1944 and 1951-1992). The photographs are portraits of the Women's Institute Leadership Class (1961 and 1962), attendees on stage at the F.W.E.C Convention, Wolfville NS (July 1964) and the Manitoba delegation to Wolfville NS (July 1964).

Notes:

History/Bio information was taken from the records and from the Manitoba Women's Institute webpage (<http://www.mbwi.ca/about-mwi/local-institutes/>. Accessed January 2017). Description by Christy Henry.

Finding Aid:

A detailed list of meeting dates for the minute books was provided by the donor. It is located in the donation file.

Storage Location:

2016 accessions
photographs in RG 5 photograph drawer by accession number



Western Manitoba Home Econocmic Association fonds

<http://archives.brandonu.ca/en/permalink/descriptions14324>

Part Of: RG 5 Western Manitoba Manuscript Collection

Description Level: Fonds

Accession Number: 13-2010

GMD: textual records

Date Range: 1971-2010

History /

Biographical:

The inaugural meeting of the Western Manitoba Home Economics Association (WMHEA) was held in September 1971, with 48 members. In 1973, the WMHEA members voted to affiliate with the Canadian Home Economics Association (CHEA).

Custodial History:

Records were in the possession of Margarite Hughes and other officers of the Western Manitoba Home Economic Association prior to their donation to the SJ McKee Archives on July 17, 2010.

Scope and Content:

Fonds includes: minutes (September 1971 - May 2010); lists of executive members; membership lists; financial records; newsletters; scrapbooks; correspondence; records of special events; miscellaneous publications; and organizational banners.

Notes: Description by Tom Mitchell

Storage Location: 2010 accessions



Methodist Church construction in Baldur, MB

<http://archives.brandonu.ca/en/permalink/descriptions14395>

Part Of: James Wall collection

Description Level: Item

Series Number: Box 1

Item Number: 12-2004.2

Accession Number: 12-2004

GMD: graphic

Date Range: [1900-1904]

Physical Description: 8" x 6" (b/w)

Material Details: On matting (12" x 10")

Physical Condition: good

Custodial History:

See collection level description for the James Douglas Wall collection.

Scope and Content:

Image of a group of people standing

Subject Access: rural images

Storage Location: 2004 accessions

Images





Methodist Church - Baldur, MB

<http://archives.brandonu.ca/en/permalink/descriptions14396>

Part Of: James Wall collection
Description Level: Item
Series Number: Box 2
Item Number: 12-2004.3
Accession Number: 12-2004
GMD: graphic
Date Range: October 17, 1904
Physical Description: 8" x 6" (b/w)
Material Details: On matting (12" x 10")
Physical Condition: Bright spot in lower lefthand corner
Custodial History:

See collection level description for the James Douglas Wall collection.

Scope and Content:

Image of the interior of the Methodist Church in Baldur, MB. The view is from the back of the church, looking over pews towards the pulpit.

Subject Access: rural images
Storage Location: 2004 accessions

Images





Manitoba threshers

<http://archives.brandonu.ca/en/permalink/descriptions14397>

Part Of: James Wall collection
Description Level: Item
Series Number: Box 2
Item Number: 12-2004.4
Accession Number: 12-2004
GMD: graphic
Date Range: [1900-1904]
Physical Description: 6.75" x 4.75" (b/w)
Material Details: On matting (9.75" x 7.75")
Physical Condition: good

Custodial History:

See collection level description for the James Douglas Wall collection.

Scope and Content:

Image of men in a field, likely a threshing crew, with work horses and farm machinery.

Subject Access: rural images

Storage Location: 2004 accessions

Images





Railway construction in Pembina Valley, MB

<http://archives.brandonu.ca/en/permalink/descriptions14398>

Part Of: James Wall collection

Description Level: Item

Series Number: Box 2

Item Number: 12-2004.5

Accession Number: 12-2004

GMD: graphic

Date Range: [1900-1904]

Physical Description: 6.75" x 4.75" (b/w)

Material Details: On matting (9" x 7")

Physical Condition: good

Custodial History:

See collection level description for the James Douglas Wall collection.

Scope and Content:

Image of horse drawn carts and men in a clearing during railway construction in the Pembina Valley. Trees and Lake Louise are in the background.

Subject Access: rural images

Storage Location: 2004 accessions

Images





Baldur, MB from south

<http://archives.brandonu.ca/en/permalink/descriptions14399>

Part Of: James Wall collection

Description Level: Item

Series Number: Box 2

Item Number: 12-2004.6

Accession Number: 12-2004

GMD: graphic

Date Range: 1903

Physical Description: 6.75" x 4.75" (b/w)

Material Details: On matting (9" x 7")

Physical Condition: good

Custodial History:

See collection level description for the James Douglas Wall collection.

Scope and Content:

Image of the town of Baldur, MB. Looking south a body of water is in the foreground.

Subject Access: rural images

Storage Location: 2004 accessions

Images





Baldur, MB

<http://archives.brandonu.ca/en/permalink/descriptions14400>

Part Of: James Wall collection

Description Level: Item

Series Number: Box 2

Item Number: 12-2004.7

Accession Number: 12-2004

GMD: graphic

Date Range: [1900-1904]

Physical Description: 5.6" x 4" (b/w)

Material Details: On matting (7.5" x 5.6")

Physical Condition: good

Custodial History:

See collection level description for the James Douglas Wall collection.

Scope and Content:

Image of the town of Baldur, MB. Visible is the L. Curtis Block. Canadian Northern rail cars are in the foreground with horse drawn carts and men working on road and town buildings behind.

Subject Access: rural images

Storage Location: 2004 accessions

Images





Curtis block - Baldur, MB

<http://archives.brandonu.ca/en/permalink/descriptions14401>

Part Of: James Wall collection

Description Level: Item

Series Number: Box 2

Item Number: 12-2004.8

Accession Number: 12-2004

GMD: graphic

Date Range: [1900-1904]

Physical Description: 5.6" x 4" (b/w)

Material Details: On matting (7.5" x 5.6")

Physical Condition: good

History /

Biographical:

The Curtis Block was built in 1900, possibly by Fred Stevens.

Custodial History:

See collection level description for the James Douglas Wall collection.

Scope and Content:

Image of the Curtis Block in Baldur, MB. The Victoria Hall, for public performances, was located on the upper floor. A group of men, one holding a hockey stick, and a dog are standing in front of the street entrance to the building.

Subject Access: rural images

Storage Location: 2004 accessions

Images





Fowler block - Baldur, MB

<http://archives.brandonu.ca/en/permalink/descriptions14402>

Part Of: James Wall collection
Description Level: Item
Series Number: Box 2
Item Number: 12-2004.9
Accession Number: 12-2004
GMD: graphic
Date Range: [1900-1904]
Physical Description: 5.5" x 4" (b/w)
Material Details: On matting (6.4" x 4.25")
Physical Condition: good

History /

Biographical:

The Fowler Block in Baldur, MB was built in 1899 by Alex Fowler.

Custodial History:

See collection level description for the James Douglas Wall collection.

Scope and Content:

Image of the Fowler Block in Baldur, MB. On the left is a shoe and harness shop owned and operated by the Fowlers from 1899-1978. On the right is J. Smith & Co. Merchants, a grocery and dry goods store. As of 2000, a grocery store still occupied the premises. Men are standing in front of the entrance to the two stores.

Subject Access: rural images
Storage Location: 2004 accessions

Images





Alex Fowler in his store - Baldur, MB

<http://archives.brandonu.ca/en/permalink/descriptions14403>

Part Of: James Wall collection
Description Level: Item
Series Number: Box 2
Item Number: 12-2004.10
Accession Number: 12-2004
GMD: graphic
Date Range: [1900-1904]
Physical Description: 5.5" x 4" (b/w)
Material Details: On matting (6.44" x 4.1")
Physical Condition: good

History /

Biographical:

The Fowler Block in Baldur, MB was built in 1899 by Alex Fowler.

Custodial History:

See collection level description for the James Douglas Wall collection.

Scope and Content:

Image of Alex Fowler standing at the counter in his store. The shelves behind him are stacked with tins of dry good, while the shelves to his side are stacked with china and glass items. The post office operated out of the back of the store.

Subject Access: rural images
Storage Location: 2004 accessions

Images





Cleghorn Pharmacy - Baldur, MB

<http://archives.brandonu.ca/en/permalink/descriptions14404>

Part Of: James Wall collection
Description Level: Item
Series Number: Box 2
Item Number: 12-2004.11
Accession Number: 12-2004
GMD: graphic
Date Range: [1900-1904]
Physical Description: 5.5" x 4" (b/w)
Material Details: On matting (6.44" x 4.1")
Physical Condition: Tiny piece of the photo is missing from the bottom edge and there are a few hairline cracks along the top of the photo

Custodial History:

See collection level description for the James Douglas Wall collection.

Scope and Content:

Image of three men standing in front of a building that appears to be Cleghorn's drug store.

Subject Access: rural images

Storage Location: 2004 accessions

Images





Front Street, west end of Baldur, MB

<http://archives.brandonu.ca/en/permalink/descriptions14405>

Part Of: James Wall collection

Description Level: Item

Series Number: Box 2

Item Number: 12-2004.12

Accession Number: 12-2004

GMD: graphic

Date Range: [1900-1904]

Physical Description: 6.6" x 4.75" (b/w)

Material Details: On matting (9" x 7")

Custodial History:

See collection level description for the James Douglas Wall collection.

Scope and Content:

Image of the west end of Front Street in Baldur, MB. Business and buildings in the photo include (L-R): Cleghorn's drug store, Fowlers, Tom Johnson's John Deer Shop, barber shop, Royal Bank (Odd Fellows Hall upstairs), Lee's Chinese Cafe, Hunters Hardware, Folwer Block, L. Curtis Block, Sexsmith Block - boarding house and sample room.

Subject Access: rural images

Storage Location: 2004 accessions

Images





Baldur, Manitoba - snow on the ground

<http://archives.brandonu.ca/en/permalink/descriptions14406>

Part Of: James Wall collection

Description Level: Item

Series Number: Box 1

Item Number: 12-2004.13

Accession Number: 12-2004

GMD: graphic

Date Range: September 13, 1903

Physical Description: 6.6" x 4.75" (b/w)

Material Details: On matting (9" x 7")

Custodial History:

See collection level description for the James Douglas Wall collection.

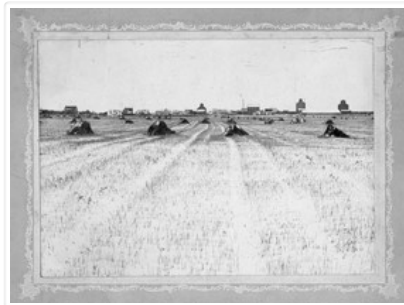
Scope and Content:

Image of Baldur, MB with a field in the foreground. The field has a light snow covering and stacks of hay. Baldur is in the background.

Subject Access: rural images

Storage Location: 2004 accessions

Images





Baldur, Manitoba from southwest

<http://archives.brandonu.ca/en/permalink/descriptions14407>

Part Of: James Wall collection

Description Level: Item

Series Number: Box 1

Item Number: 12-2004.14

Accession Number: 12-2004

GMD: graphic

Date Range: 1903

Physical Description: 6.6" x 4.75" (b/w)

Material Details: On matting (8.75" x 7")

Physical Condition: good

Custodial History:

See collection level description for the James Douglas Wall collection.

Scope and Content:

Image of Baldur, MB, including grain elevators.

Subject Access: rural images

Storage Location: 2004 accessions

Images





Baldur, Manitoba spring flood

<http://archives.brandonu.ca/en/permalink/descriptions14408>

Part Of: James Wall collection

Description Level: Item

Series Number: Box 1

Item Number: 12-2004.15

Accession Number: 12-2004

GMD: graphic

Date Range: 1903

Physical Description: 8" x 6" (b/w)

Material Details: On matting (12" x 10")

Physical Condition: good

Custodial History:

See collection level description for the James Douglas Wall collection.

Scope and Content:

Image of Baldur, MB, with a body of water, possibly from spring flooding, in the foreground.

Subject Access: rural images

Location Copy: Same as 12-2004.1

Storage Location: 2004 accessions

Images





Dr. L.M. Cleghorn's house - Baldur, MB

<http://archives.brandonu.ca/en/permalink/descriptions14409>

Part Of: James Wall collection
Description Level: Item
Series Number: Box 2
Item Number: 12-2004.16
Accession Number: 12-2004
GMD: graphic
Date Range: [1900-1904]
Physical Description: 5" x 4" (b/w)
Material Details: On matting (6" x 5.25")
Physical Condition: good
Custodial History:

See collection level description for the James Douglas Wall collection.

Scope and Content:

Image of two women and a child on the porch of Doctor Cleghorn's house in Baldur, MB.

Subject Access: rural images
Storage Location: 2004 accessions

Images





Bateman house - Baldur, MB

<http://archives.brandonu.ca/en/permalink/descriptions14410>

Part Of: James Wall collection
Description Level: Item
Series Number: Box 2
Item Number: 12-2004.17
Accession Number: 12-2004
GMD: graphic
Date Range: [1900-1904]
Physical Description: 4" x 3" (b/w)
Material Details: On matting (6" x 5")
Physical Condition: Some bright spots/discoloration along the top and right side of the photo
Custodial History:

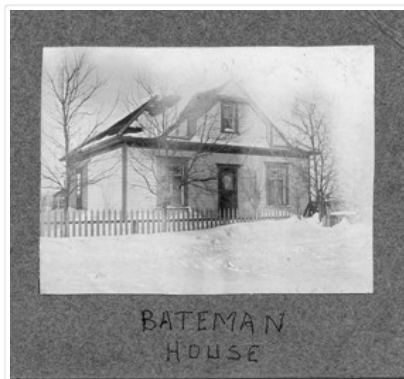
See collection level description for the James Douglas Wall collection.

Scope and Content:

Image of the Bateman house, located in Baldur, MB, in winter.

Subject Access: rural images
winter
Storage Location: 2004 accessions

Images





Mildred Bateman - Baldur, MB

<http://archives.brandonu.ca/en/permalink/descriptions14411>

Part Of: James Wall collection
Description Level: Item
Series Number: Box 2
Item Number: 12-2004.18
Accession Number: 12-2004
GMD: graphic
Date Range: [1900-1904]
Physical Description: 5.5" x 4" (b/w)
Material Details: On matting (6.4" x 4.25")
Physical Condition: good

History /

Biographical:

Mildred Bateman was born in 1897.

Custodial History:

See collection level description for the James Douglas Wall collection.

Scope and Content:

Image of Mildred Bateman in the front yard of Bateman house in Baldur, MB.

Subject Access: rural images

Storage Location: 2004 accessions

Images

