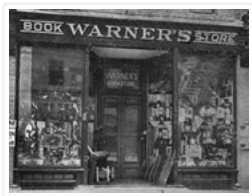


S. J. McKee Archives



Warner's Book Store

<http://archives.brandonu.ca/en/permalink/descriptions9489>

Part Of: RG 11 Lawrence Stuckey fonds

Creator: George H. Harris

Description Level: Item

Series Number: 3.1

Item Number: 1-2002.3.1E16

Accession Number: 1-2002

GMD: graphic

Date Range: [ca. 1904]

Physical Description: 3 1/2" x 5"

Material Details: Negative

Custodial History:

For custodial history see the collection level description of the Lawrence Stuckey collection.

Scope and Content:

Warner's Book Store

Notes: Located in Syndicate Block

Name Access: Warner's Book Store

Subject Access: businesses

bookselling

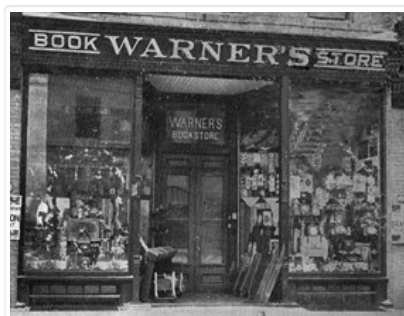
booksellers

Brandon business buildings & facilities before 1940

Repro Restriction: The McKee Archives is the copyright holder for the Stuckey materials.

Storage Location: Lawrence Stuckey collection

Images





CPR Ice House Fire

<http://archives.brandonu.ca/en/permalink/descriptions9613>

Part Of: RG 11 Lawrence Stuckey fonds
Creator: George H. Harris
Description Level: Item
Series Number: 3.1
Item Number: 1-2002.3.1FA4
Accession Number: 1-2002
GMD: graphic
Date Range: May 19, 1951
Physical Description: 3 1/2" x 5"
Material Details: Negative
Custodial History:

For custodial history see the collection level description of the Lawrence Stuckey collection.

Scope and Content:

CPR Ice House Fire with engine 701

Notes: This large ice house, located between the CPR tracks and Assiniboine Avenue at 3rd Street, was filled with blocks of ice from the Assiniboine River each winter. It had a long high platform for [loading ice blocks into] refrigerator cars, and also handled charcoal braziers for heating these same cars in winter. The new ice house structure that was built after this fire was much smaller, as it had an artificial ice plant.

With mechanically temperature-controlled cars replacing ice-cooled refrigerators, it was demolished in the 1970's.

This photograph shows how steam switch engines were used as fire engines. A hose carried in a box under the tender was fitted into a branch of the boiler feed pipe (discharge pipe). When the injector was turned on it gave a nozzle pressure of over 200 psi.

Name Access: CPR Ice House Fire
Subject Access: fires
railways
Canadian Pacific Railway
Brandon Fires

Repro Restriction: The McKee Archives is the copyright holder for the Stuckey materials.
Storage Location: Lawrence Stuckey collection

Images



