

# S. J. McKee Archives



## Family portrait

<http://archives.brandonu.ca/en/permalink/descriptions14240>

Part Of:	Joseph H. Hughes collection
Creator:	Photographer: G. Marr Studio, Strathroy, ON
Description Level:	Item
Series Number:	3-1997.1
Item Number:	3-1997.1.49
Accession Number:	3-1997
Other Numbers:	Hughes #51
GMD:	graphic
Date Range:	c.1880s
Physical Description:	6.75" x 4.75" (b/w)
Material Details:	on matting
Physical Condition:	Adhesive on back of photograph
Scope and Content:	
	Photograph shows a multi-generational group of people standing outside in front of a wood-framed home. Individuals may possibly belong to the Hughes family.
Notes:	Photograph stamped on the back: from the G. Marr Studio, Photos, Views, Frames, Crayon Portraits, &c., Strathroy, Ontario.
Subject Access:	family portraits
Storage Location:	RG 5 photograph storage drawer

## Images





## Doreen Rouse Pachel, Yorkton

<http://archives.brandonu.ca/en/permalink/descriptions14241>

Part Of: Joseph H. Hughes collection

Description Level: Item

Series Number: 3-1997.1

Item Number: 3-1997.1.50

Accession Number: 3-1997

Other Numbers: Hughes #52

GMD: graphic

Date Range: c.1950

Physical Description: 3.5" x 2.5" (b/w)

Physical Condition: Writing on front of photograph

### Scope and Content:

Photograph shows a young woman sitting on a porch step holding a baby. A toddler sits on the step to her right.

Notes: Writing on the front of photograph reads: Doreen Rouse Pachel, Yorkton.  
Writing on the back of photograph reads: Doreen Rouse Pachel with  
(Billy & Murray)

Name Access: Doreen Rouse Pachel

Subject Access: family portraits

children

women

Storage Location: RG 5 photograph storage drawer

## Images

---





## Elma Hughes

<http://archives.brandonu.ca/en/permalink/descriptions14242>

Part Of: Joseph H. Hughes collection  
Creator: Photographer: Clark J. Smith, Brandon  
Description Level: Item  
Series Number: 3-1997.1  
Item Number: 3-1997.1.51  
Accession Number: 3-1997  
Other Numbers: Hughes #53  
GMD: graphic  
Date Range: c.1950  
Physical Description: 10" x 8" (b/w)  
Material Details: on matting  
Physical Condition: Adhesive on back of photograph

### Scope and Content:

Photograph shows a portrait of an elderly woman with crimped hair and wearing glasses. The woman has been identified as Elma Hughes, wife of Willard J. Hughes.

Name Access: Elma Hughes  
Subject Access: portraits  
Storage Location: RG 5 photograph storage drawer

## Images

---





## Hughes & Co. Lumber, founding members

<http://archives.brandonu.ca/en/permalink/descriptions14254>

Part Of: Joseph H. Hughes collection

Description Level: Item

Series Number: 3-1997.1

Item Number: 3-1997.1.63

Accession Number: 3-1997

Other Numbers: Hughes #56

GMD: graphic

Date Range: [1900s]

Physical Description: 9.5" x 7.5" (b/w)

Material Details: on matting

Physical Condition: Mat is water stained.

Scope and Content:

Photograph shows a group of 10 men wearing heavy coats posing in front of Hughes & Co. Lumber located at 152 10th Street.

Notes: Back of photograph is stamped: Hughes & Co. Ltd., 1009 Princess Ave., Brandon, Man. Writing on the back of the photograph reads: Founders of Hughes

Name Access: Hughes & Co. Lumber

Subject Access: Brandon business buildings & facilities before 1940  
street scenes  
portraits

Storage Location: Hughes oversize drawer

### Images

---





## Strathcona Block, H.Lamontagne & Co.

<http://archives.brandonu.ca/en/permalink/descriptions14255>

Part Of: Joseph H. Hughes collection  
Creator: Photographer: Frank Gowen, Brandon  
Description Level: Item  
Series Number: 3-1997.1  
Item Number: 3-1997.1.64  
Accession Number: 3-1997  
Other Numbers: Hughes #64  
GMD: graphic  
Date Range: 1905  
Physical Description: 7.5" x 9.5" (b/w)  
Material Details: on matting  
Physical Condition: Mat is water stained, emulsive side is stained

### Scope and Content:

Photograph shows the recently constructed Strathcona Block. H. Lamontagne & Co. Ltd., Wholesale, occupies the ground floor. Scaffolding is suspended from the north side of the building. Buildings have yet to be erected to the north and south sides of the Strathcona Block.

Notes: Back of photograph is stamped: Hughes & Co. Ltd., 1009 Princess Ave., Brandon, Man.

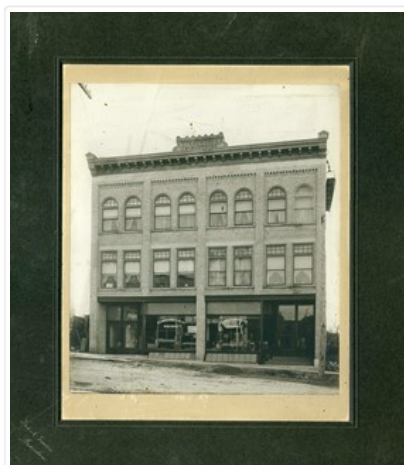
Name Access: Strathcona Block  
H. Lamontagne & Co.

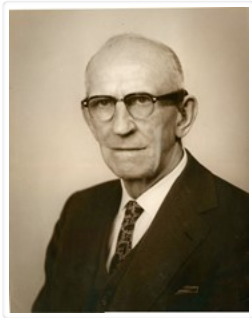
Subject Access: Brandon business buildings & facilities before 1940  
street scenes  
portraits

Storage Location: Hughes oversize drawer

## Images

---





## Willard Hughes

<http://archives.brandonu.ca/en/permalink/descriptions14256>

Part Of: Joseph H. Hughes collection

Description Level: Item

Series Number: 3-1997.1

Item Number: 3-1997.1.65

Accession Number: 3-1997

GMD: graphic

Date Range: [1960s]

Physical Description: 11" x 14" (b/w)

Physical Condition: Photograph is creased

Scope and Content:

Photograph shows a portrait of an elderly man wearing a three-piece suit and black-rimmed glasses.

Notes: Writing on the back of the photograph reads: Willard Hughes

Name Access: Willard Hughes

Subject Access: portraits

Storage Location: Hughes oversize drawer

### Images

---



## Brandon College Platoon

<http://archives.brandonu.ca/en/permalink/descriptions14257>

Part Of: Joseph H. Hughes collection

Creator: Photographer: Davidson Studio

Description Level: Item

Series Number: 3-1997.1

Item Number: 3-1997.1.66

Accession Number: 3-1997  
Other Numbers: Hughes #81  
GMD: graphic  
Date Range: 1916  
Physical Description: 13.5" x 10.5" (b/w)  
Material Details: on matting  
Physical Condition: Photograph beginning to separate from matting

History /

Biographical:

Brandon College established a Canadian Officer Training Corps (COTC) program in 1916 and had enough students for a platoon that would join the 196th Western Universities Battalion's B Company. COTC logs for in the SJ McKee Archives show that at least 40 men regularly attended classes on campus during the 1916 winter term.

The Brandon Daily Sun published the names of 60 potential platoon recruits before they headed to Camp Hughes to train in the summer of 1916. Although Lt. J.R.C. Evans spearheaded the training of the COTC enlistees at Brandon College, he was found medically unfit for overseas service. In his stead, the son of the college's founder, Lt. William Carey McKee, lead the platoon to Camp Hughes where they joined the 196th Battalion. Of the 60 recruits identified in the local paper, 20 would not survive the war, including Lt. McKee.

[ST/2016]

Scope and Content:

Photograph shows a group of 40 men wearing WWI uniforms. The men have the Canada general service cap badge on their headdress. The officer in the centre of the group (i.e., the man with the cane) is J.R.C. Evans. The group of men are likely members of the first Brandon College Platoon, which joined the 196th Western Universities Battalion.

Name Access: J.R.C. Evans  
Subject Access: portraits  
First World War  
Great War  
Storage Location: Hughes oversize drawer  
Related Material: Daly House Museum  
The Clark Hall Scrapbook

## Images

---





## Mrs. L. O'Neil

<http://archives.brandonu.ca/en/permalink/descriptions14258>

Part Of: Joseph H. Hughes collection

Description Level: Item

Series Number: 3-1997.1

Item Number: 3-1997.1.67

Accession Number: 3-1997

GMD: graphic

Date Range: [1800s]

Physical Description: 20" x 15" (b/w)

Material Details: on matting

### Scope and Content:

Photograph shows an elderly couple posing for a formal portrait. The woman is wearing a black crepe dress. The man, who is bearded but not mustached, is wearing a black jacket.

Notes: Writing on the back of the photograph reads: Mrs. L. O'Neil?

Subject Access: portraits

Storage Location: Hughes oversize drawer

## Images

---





## Hughes family in Ontario

<http://archives.brandonu.ca/en/permalink/descriptions14266>

Part Of: Joseph H. Hughes collection

Description Level: Item

Series Number: 3-1997.1

Item Number: 3-1997.1.68

Accession Number: 3-1997

Other Numbers: Hughes #66

GMD: graphic

Date Range: 1868

Physical Description: 9.25" x 7.25" (b/w)

Material Details: on matting

### Scope and Content:

Photograph shows a group of 14 individuals scattered throughout a yard of a two-storey brick home with an extension. An elderly woman can be seen in a wheelchair. Four women are wearing white gowns with long sleeves.

Notes: Writing on the front corner of the photograph reads: 1868

Subject Access: portraits

residences

building exteriors

Storage Location: Hughes oversize drawer

## Images

---



## Motor Mart, Sioux City, Iowa

<http://archives.brandonu.ca/en/permalink/descriptions14268>

Part Of: Joseph H. Hughes collection

Description Level: Item

Series Number: 3-1997.1

Item Number: 3-1997.1.70

Accession Number: 3-1997

Other Numbers: Hughes #68

GMD: graphic

Date Range: [1920s]  
Physical Description: 8.5" x 6.25" (b/w)  
Material Details: on matting  
Physical Condition: Matting is torn, photo is scratched

History /

Biographical:

The Motor Mart Building in Sioux City, Iowa, is listed on the United States National Park Service's National Register of Historic Places. The State Historical Society of Iowa submitted the application in 1993. The building is an architectural example of the Commercial Style of the late 19th and early 20th Century American Movement designed by E.J. Henriques and C.F. Lytle Co. The building has a concrete foundation, brick walls, and a concrete roof. The Turner Mushroom System, a patented structural system involving a poured reinforced concrete framed, was used in the construction of the building. (Source: National Register of Historic Places Registration Form [online], [focus.nps.gov/pdfhost/docs/NRHP/Text/93000330.pdf](https://focus.nps.gov/pdfhost/docs/NRHP/Text/93000330.pdf))

Scope and Content:

Photograph shows a four-storey brick building, with a large showroom on the main floor. Inside, automobiles can be seen on display. Banners in the store windows read White Moon. The photograph was taken at night and exterior lights decorate the building.

Notes: Writing on the back of the photograph reads: Motor Mart, Sioux City, Ia.,  
Lytle [?] Co. Archts., Mushroom Sys. truout.

Subject Access: Transportation  
automobiles  
motor cars  
car lots

Storage Location: Hughes oversize drawer

## Images

---

