

S. J. McKee Archives



CPR Engine 144 with Miniota Passenger Train

<http://archives.brandonu.ca/en/permalink/descriptions9960>

Part Of: RG 11 Lawrence Stuckey fonds

Creator: George H. Harris

Description Level: Item

Series Number: 3.1

Item Number: 1-2002.3.1P34

Accession Number: 1-2002

GMD: graphic

Date Range: 1927

Physical Description: 2" x 3"

Material Details: Negative

Custodial History:

For custodial history see the collection level description of the Lawrence Stuckey collection.

Scope and Content:

Miniota passenger train engine 144, a 4-4-0 ["American" type], in Brandon

Notes: Small original negative

From the collection of George H. Harris, Winnipeg, Manitoba.

Name Access: CPR Engines

Subject Access: railroads

railways

locomotives

passenger trains

Canadian Pacific Railway in Brandon

Repro Restriction: The McKee Archives is the copyright holder for the Stuckey materials.

Location Copy: 1-2002.3.9.93

Storage Location: Lawrence Stuckey collection

Images





Boiler Room of CPR Roundhouse

<http://archives.brandonu.ca/en/permalink/descriptions9961>

Part Of: RG 11 Lawrence Stuckey fonds

Creator: Norman Schiedel

Description Level: Item

Series Number: 3.1

Item Number: 1-2002.3.1P35

Accession Number: 1-2002

GMD: graphic

Date Range: [191-?]

Physical Description: 3 1/2" x 5"

Material Details: Negative

Custodial History:

For custodial history see the collection level description of the Lawrence Stuckey collection.

Scope and Content:

Boiler Room of CPR Roundhouse, Brandon, Manitoba

Notes: Copy LAS

From Mrs. James Schiedel

[Mr. Stuckey did not number this envelope. However he filed it in this location and therefore we have numbered it P35.]

Name Access: CPR Roundhouse Interior

CPR Engine Terminal

Subject Access: railroads

railways

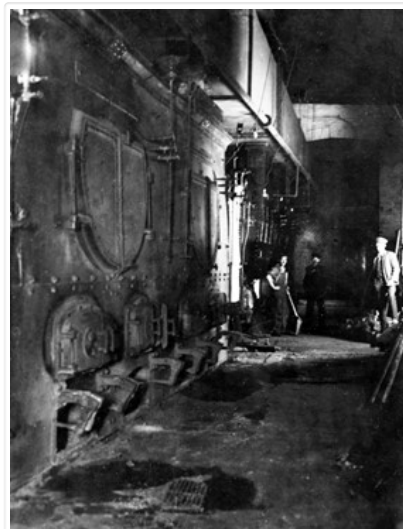
locomotives

Canadian Pacific Railway in Brandon

Repro Restriction: The McKee Archives is the copyright holder for the Stuckey materials.

Storage Location: Lawrence Stuckey collection

Images





Northern Pacific and Manitoba Railway Passenger Train

<http://archives.brandonu.ca/en/permalink/descriptions9962>

Part Of: RG 11 Lawrence Stuckey fonds

Description Level: Item

Series Number: 3.1

Item Number: 1-2002.3.1PC1

Accession Number: 1-2002

GMD: graphic

Date Range: [189-]

Physical Description: 3" x 5"

Material Details: Negative

History /

Biographical:

The building near the back of the train was the original Salvation Army Citadel. Built in 1889, it was purchased by Wm. Graham in 1910 and moved to the west side of the 300 block of 10th St. It had to be moved to build the Prince Edward Hotel and eventually became part of "Billy" Graham's dance hall.

Custodial History:

For custodial history see the collection level description of the Lawrence Stuckey collection.

Scope and Content:

Northern Pacific and Manitoba Railway engine No. 5, with passenger train

Notes: Smaller negative in CN old engines file.

Name Access: Northern Pacific and Manitoba Railway

Subject Access: railroads

railways

locomotives

passenger trains

Canadian National Railways in Brandon - Early

Repro Restriction: The McKee Archives is the copyright holder for the Stuckey materials.

Storage Location: Lawrence Stuckey collection

Images





CNR Engine Terminal

<http://archives.brandonu.ca/en/permalink/descriptions9963>

Part Of: RG 11 Lawrence Stuckey fonds

Creator: George H. Harris

Description Level: Item

Series Number: 3.1

Item Number: 1-2002.3.1PC2

Accession Number: 1-2002

GMD: graphic

Date Range: 1937

Physical Description: 3 1/2" x 5"

Material Details: Negative

Custodial History:

For custodial history see the collection level description of the Lawrence Stuckey collection.

Scope and Content:

Canadian National Railways engine terminal, Brandon.

Notes: Engines left to right: 1345, 1267, 2728, 2637, 1392, 2407

Copy negative

[Located just west of First Street; Looking west. P.E. 28/07/09]

Name Access: CNR Engine Terminal

Subject Access: railroads

railways

locomotives

Canadian National Railways in Brandon - Early

Repro Restriction: The McKee Archives is the copyright holder for the Stuckey materials.

Storage Location: Lawrence Stuckey collection

Images





CNR Engine Terminal

<http://archives.brandonu.ca/en/permalink/descriptions9964>

Part Of: RG 11 Lawrence Stuckey fonds

Creator: George H. Harris

Description Level: Item

Series Number: 3.1

Item Number: 1-2002.3.1PC3

Accession Number: 1-2002

GMD: graphic

Date Range: 1938

Physical Description: 3 1/2" x 5"

Material Details: Negative

Custodial History:

For custodial history see the collection level description of the Lawrence Stuckey collection.

Scope and Content:

Canadian National Railways engine terminal, Brandon.

Notes: Copy negative

From the collection of George H. Harris, Winnipeg, Manitoba

[Looking west towards First Street crossing. P.E. 28/07/09]

Name Access: CNR Engine Terminal

Subject Access: railroads

railways

locomotives

Canadian National Railways in Brandon - Early

Repro Restriction: The McKee Archives is the copyright holder for the Stuckey materials.

Storage Location: Lawrence Stuckey collection

Images





CNR Station at Prince Edward Hotel

<http://archives.brandonu.ca/en/permalink/descriptions9965>

Part Of: RG 11 Lawrence Stuckey fonds

Creator: George H. Harris

Description Level: Item

Series Number: 3.1

Item Number: 1-2002.3.1PC4

Accession Number: 1-2002

GMD: graphic

Date Range: June 1940

Physical Description: 3 1/2" x 5"

Material Details: Negative

Custodial History:

For custodial history see the collection level description of the Lawrence Stuckey collection.

Scope and Content:

[East side of Prince Edward Hotel railway station; facing Ninth Street]

Notes: Copy LAS.

Name Access: Prince Edward Hotel

CNR Station

Subject Access: railway stations

hotels

Brandon hotels

Canadian National Railways in Brandon - Early

Repro Restriction: The McKee Archives is the copyright holder for the Stuckey materials.

Storage Location: Lawrence Stuckey collection

Images





CNR Station at Brandon North

<http://archives.brandonu.ca/en/permalink/descriptions9966>

Part Of: RG 11 Lawrence Stuckey fonds

Description Level: Item

Series Number: 3.1

Item Number: 1-2002.3.1PC5

Accession Number: 1-2002

GMD: graphic

Date Range: [ca. 1940]

Physical Description: 3 1/2" x 5"

Material Details: Negative

History /

Biographical:

[This station, located 13 km north of Brandon on the east side of PTH 10, was] built in the early 1930s to replace Knox as the CNR's mainline station for Brandon. All passenger trains stopped and buses operated between the CNR's Brandon station and Brandon North to meet all trains. It was enlarged as shown here in late 1930s, and at peak operation in the 1940s & 1950s saw six daily passenger trains 1 - 2 & 3 - 4 "Continental Limited" and 11 - 12 locals. VIA trains 3 and 4 "Supercontinental" ceased operation Nov. 15, 1981 leaving no passenger service on the former Grand Trunk Pacific mainline of CNR [at that time]. This station was demolished in the fall of 1982.

Custodial History:

For custodial history see the collection level description of the Lawrence Stuckey collection.

Scope and Content:

CNR Station at Brandon North

Name Access: CNR Station

Subject Access: railroads

railways

railway stations

Canadian National Railways in Brandon - Early

Repro Restriction: The McKee Archives is the copyright holder for the Stuckey materials.

Storage Location: Lawrence Stuckey collection

Images





CNR Roundhouse After Storm

<http://archives.brandonu.ca/en/permalink/descriptions9967>

Part Of: RG 11 Lawrence Stuckey fonds

Creator: L.A. Stuckey

Description Level: Item

Series Number: 3.1

Item Number: 1-2002.3.1PC6(1)

Accession Number: 1-2002

GMD: graphic

Date Range: June 19, 1941

Physical Description: 3 1/2" x 5"

Material Details: Negative

Custodial History:

For custodial history see the collection level description of the Lawrence Stuckey collection.

Scope and Content:

CNR roundhouse after a storm

Notes: Image from a combined copy negative by LAS.

Name Access: CNR Roundhouse

CNR Engine Terminal

Subject Access: railroads

railways

Canadian National Railways in Brandon - Early

Repro Restriction: The McKee Archives is the copyright holder for the Stuckey materials.

Storage Location: Lawrence Stuckey collection

Images





CNR Engine 1346 After Storm

<http://archives.brandonu.ca/en/permalink/descriptions9968>

Part Of: RG 11 Lawrence Stuckey fonds

Creator: L.A. Stuckey

Description Level: Item

Series Number: 3.1

Item Number: 1-2002.3.1PC6(2)

Accession Number: 1-2002

GMD: graphic

Date Range: June 19, 1941

Physical Description: 3 1/2" x 5"

Material Details: Negative

Custodial History:

For custodial history see the collection level description of the Lawrence Stuckey collection.

Scope and Content:

Engine 1346 in badly damaged CNR roundhouse after a storm

Notes: Image from a combined copy negative by LAS.

Name Access: CNR Roundhouse

CNR Engine Terminal

Subject Access: railroads

railways

locomotives

Canadian National Railways in Brandon - Early

Repro Restriction: The McKee Archives is the copyright holder for the Stuckey materials.

Storage Location: Lawrence Stuckey collection

Images





CNR Station at Prince Edward Hotel

<http://archives.brandonu.ca/en/permalink/descriptions9969>

Part Of: RG 11 Lawrence Stuckey fonds

Creator: D.L. Bottley

Description Level: Item

Series Number: 3.1

Item Number: 1-2002.3.1PC7(1)

Accession Number: 1-2002

GMD: graphic

Date Range: 1979

Physical Description: 3 1/2" x 5"

Material Details: Negative

Custodial History:

For custodial history see the collection level description of the Lawrence Stuckey collection.

Scope and Content:

Canadian Northern Railway (became Canadian National Railways) station on Ninth Street.

Notes: Image from a combined copy negative by LAS.

[View of south side of station and hotel, facing Ninth Street. P.E.]

Name Access: Prince Edward Hotel

CNR Station

Canadian Northern Railway

Subject Access: railway stations

hotels

Brandon hotels

Canadian National Railways in Brandon - Early

Repro Restriction: The McKee Archives is the copyright holder for the Stuckey materials.

Storage Location: Lawrence Stuckey collection

Images





CNR Station at Prince Edward Hotel

<http://archives.brandonu.ca/en/permalink/descriptions9970>

Part Of: RG 11 Lawrence Stuckey fonds

Creator: D.L. Bottley

Description Level: Item

Series Number: 3.1

Item Number: 1-2002.3.1PC7(2)

Accession Number: 1-2002

GMD: graphic

Date Range: 1979

Physical Description: 3 1/2" x 5"

Material Details: Negative

Custodial History:

For custodial history see the collection level description of the Lawrence Stuckey collection.

Scope and Content:

Canadian Northern Railway (became Canadian National Railways) station on Ninth Street.

Notes: Image from a combined copy negative by LAS.

[View of the south side of station and hotel, and former station platform (left side). P.E.]

Name Access: Prince Edward Hotel

CNR Station

Canadian Northern Railway

Subject Access: railway stations

hotels

Brandon hotels

Canadian National Railways in Brandon - Early

Repro Restriction: The McKee Archives is the copyright holder for the Stuckey materials.

Storage Location: Lawrence Stuckey collection

Images





CN Station

<http://archives.brandonu.ca/en/permalink/descriptions9971>

Part Of: RG 11 Lawrence Stuckey fonds

Creator: L.A. Stuckey

Description Level: Item

Series Number: 3.1

Item Number: 1-2002.3.1PD1(1)

Accession Number: 1-2002

GMD: graphic

Date Range: September 4, 1978

Physical Description: 2 1/2" x 2 1/2"

Material Details: Negative

Custodial History:

For custodial history see the collection level description of the Lawrence Stuckey collection.

Scope and Content:

Canadian National station, Brandon

Notes: [Mr. Stuckey taped a print to the envelope. We have separated them and numbered the negative PD1(1) and the print PD1(2).]

Name Access: CNR Station

Subject Access: railway stations

Canadian National Railway in Brandon - Later

Repro Restriction: The McKee Archives is the copyright holder for the Stuckey materials.

Storage Location: Lawrence Stuckey collection

Images





CN Station

<http://archives.brandonu.ca/en/permalink/descriptions9972>

Part Of: RG 11 Lawrence Stuckey fonds

Creator: L.A. Stuckey

Description Level: Item

Series Number: 3.1

Item Number: 1-2002.3.1PD1(2)

Accession Number: 1-2002

GMD: graphic

Date Range: September 4, 1978

Physical Description: 2 1/2" x 2 1/2"

Material Details: Photograph

Custodial History:

For custodial history see the collection level description of the Lawrence Stuckey collection.

Scope and Content:

Canadian National station, Brandon

Notes: [Mr. Stuckey taped a print to the envelope. We have separated them and numbered the negative PD1(1) and the print PD1(2).]

Name Access: CNR Station

Subject Access: railway stations

Canadian National Railway in Brandon - Later

Repro Restriction: The McKee Archives is the copyright holder for the Stuckey materials.

Storage Location: Lawrence Stuckey collection

Images



CNR Passenger Train at Brandon Station

<http://archives.brandonu.ca/en/permalink/descriptions9973>

Part Of: RG 11 Lawrence Stuckey fonds

Description Level: Item

Series Number: 3.1

Item Number: 1-2002.3.1PD2

Accession Number: 1-2002

GMD: graphic

Date Range: October 11, 1959

Physical Description: 3 1/2" x 5"

Material Details: Negative

History /

Biographical:

[According to Mr. Stuckey] it snowed continuously from Oct. 7 to 10th, giving [Brandon] the heaviest snowfall ever recorded in October - must have been about 40".

Custodial History:

For custodial history see the collection level description of the Lawrence Stuckey collection.

Scope and Content:

Canadian National Railway [passenger train] No. 6, with engines 1905 and 1906, in snow at station.

Notes: In this photo CNR No. 6 Edmonton-Regina-Winnipeg is running 10 hours late as an Extra train

[Note that the train has backed into the station located on Ninth Street, adjacent to the Prince Edward Hotel. P.E. 28/07/09.]

Name Access: CNR Station

Prince Edward Hotel

Subject Access: railroads

railways

railway stations

locomotives

passenger trains

Canadian National Railway in Brandon - Later

Repro Restriction: The McKee Archives is the copyright holder for the Stuckey materials.

Storage Location: Lawrence Stuckey collection

Images





CNR Terminal Building

<http://archives.brandonu.ca/en/permalink/descriptions9974>

Part Of: RG 11 Lawrence Stuckey fonds

Creator: L.A. Stuckey

Description Level: Item

Series Number: 3.1

Item Number: 1-2002.3.1PD4(1)

Accession Number: 1-2002

GMD: graphic

Date Range: March 1, 1992

Physical Description: 2 1/2" x 2 1/2"

Material Details: Negative

Custodial History:

For custodial history see the collection level description of the Lawrence Stuckey collection.

Scope and Content:

Canadian National Railway terminal building.

Notes: [Building located just west of First Street.]

[Although filed in this location, Mr. Stuckey did not number this envelope. There were two negatives contained within it; we have separated and numbered them PD4(1) and PD4(2). P.E.]

Name Access: CNR Terminal Building

CNR Station

Subject Access: railroads

railways

railway stations

Canadian National Railway in Brandon - Later

Repro Restriction: The McKee Archives is the copyright holder for the Stuckey materials.

Storage Location: Lawrence Stuckey collection

Images





CNR First Street Engine Terminal

<http://archives.brandonu.ca/en/permalink/descriptions9975>

Part Of: RG 11 Lawrence Stuckey fonds

Creator: L.A. Stuckey

Description Level: Item

Series Number: 3.1

Item Number: 1-2002.3.1PD3

Accession Number: 1-2002

GMD: graphic

Date Range: June 30, 1992

Physical Description: 2 1/2" x 2 1/2"

Material Details: Negative

Custodial History:

For custodial history see the collection level description of the Lawrence Stuckey collection.

Scope and Content:

Canadian National Railways engine terminal, Brandon.

Notes: [Located just west of First Street; Looking west. P.E. 29/07/09]

[Mr. Stuckey did not number this envelope, however he filed it in this location. We have numbered it PD3.]

Name Access: CNR Engine Terminal

Subject Access: railroads

railways

locomotives

Canadian National Railway in Brandon - Later

Repro Restriction: The McKee Archives is the copyright holder for the Stuckey materials.

Storage Location: Lawrence Stuckey collection

Images





CNR Terminal Building

<http://archives.brandonu.ca/en/permalink/descriptions9976>

Part Of: RG 11 Lawrence Stuckey fonds

Creator: L.A. Stuckey

Description Level: Item

Series Number: 3.1

Item Number: 1-2002.3.1PD4(2)

Accession Number: 1-2002

GMD: graphic

Date Range: March 1, 1992

Physical Description: 2 1/2" x 2 1/2"

Material Details: Negative

Custodial History:

For custodial history see the collection level description of the Lawrence Stuckey collection.

Scope and Content:

Canadian National Railway terminal building.

Notes: [Building located just west of First Street.]

[Although filed in this location, Mr. Stuckey did not number this envelope. There were two negatives contained within it; we have separated and numbered them PD4(1) and PD4(2). P.E.]

Name Access: CNR Terminal Building

CNR Station

Subject Access: railroads

railways

railway stations

Canadian National Railway in Brandon - Later

Repro Restriction: The McKee Archives is the copyright holder for the Stuckey materials.

Storage Location: Lawrence Stuckey collection

Images



Construction of Great Northern (BS&HB) Railway Bridge at
Bunclody - Grade



<http://archives.brandonu.ca/en/permalink/descriptions9977>

Part Of: RG 11 Lawrence Stuckey fonds

Description Level: Item

Series Number: 3.1

Item Number: 1-2002.3.1PE1

Accession Number: 1-2002

GMD: graphic

Date Range: [1905 or 1906]

Physical Description: 3 1/2" x 5"

Material Details: Negative

History /

Biographical:

According to Stuckey and Bain (1996), "The Brandon, Saskatchewan & Hudson's Bay Railway was built and operated as a totally owned subsidiary of the Great Northern Railway. Construction commenced in late 1905 and by the end of 1905, less than a mile of track had been laid north of the boundary at St. John. In 1906, the remaining 68.6 miles to Brandon were laid and service commenced that year. During the Depression of the 1930s, traffic declined significantly and the entire branch was abandoned in 1936. Over much of the branch's length, the ties and rails were laid on the prairie without ballast and today little remains of the line apart from traces where there were cuts and bridges." (p. 18)

Stuckey, L. A., & Bain, D. M. (1996). The Great Northern and Northern Pacific railways in Canada. Calgary, Alberta: British Railway Modellers of North America.

Custodial History:

For custodial history see the collection level description of the Lawrence Stuckey collection.

Scope and Content:

View of the Great Northern (BS&HB) Railway building a grade [to their bridge] at Bunclody, Manitoba.

Notes: [This railway bridge crossed the Souris River. P.E.]

From the collection of Gilford Copeland of Bunclody, Manitoba

Copy negative LAS.

Name Access: Construction of Great Northern (BS&HB) Railway
Brandon, Saskatchewan & Hudson's Bay Railway
Great Northern Railway

Subject Access: railroads
railways
manmade geographic features
construction
construction of bridges
bridges
Great Northern Railway from Church's Ferry ND to Brandon MB

Repro Restriction: The McKee Archives is the copyright holder for the Stuckey materials.

Storage Location: Lawrence Stuckey collection

[Images](#)



Construction of Great Northern (BS&HB) Railway Bridge at Bunclody - Grading Station

<http://archives.brandonu.ca/en/permalink/descriptions9978>

Part Of: RG 11 Lawrence Stuckey fonds

Description Level: Item

Series Number: 3.1

Item Number: 1-2002.3.1PE2

Accession Number: 1-2002

GMD: graphic

Date Range: [1905 or 1906]

Physical Description: 3 1/2" x 5"

Material Details: Negative

History /

Biographical:

According to Stuckey and Bain (1996), "The Brandon, Saskatchewan & Hudson's Bay Railway was built and operated as a totally owned subsidiary of the Great Northern Railway.

Construction commenced in late 1905 and by the end of 1905, less than a mile of track had been laid north of the boundary at St. John. In 1906, the remaining 68.6 miles to Brandon were laid and service commenced that year. During the Depression of the 1930s, traffic declined significantly and the entire branch was abandoned in 1936. Over much of the branch's length, the ties and rails were laid on the prairie without ballast and today little remains of the line apart from traces where there were cuts and bridges." (p. 18)

Stuckey, L. A., & Bain, D. M. (1996). The Great Northern and Northern Pacific railways in Canada. Calgary, Alberta: British Railway Modellers of North America.

Custodial History:

For custodial history see the collection level description of the Lawrence Stuckey collection.

Scope and Content:

View of the Great Northern (BS&HB) Railway building a grade [to their bridge] at Bunclody, Manitoba.

Notes: Grading station site

From the collection of Gilford Copeland of Bunclody, Manitoba

Copy negative LAS.

Name Access: Construction of Great Northern (BS&HB) Railway
Brandon, Saskatchewan & Hudson's Bay Railway
Great Northern Railway

Subject Access: railroads
 railways
 manmade geographic features
 construction
 construction of bridges
 bridges
 Great Northern Railway from Church's Ferry ND to Brandon MB

Repro Restriction: The McKee Archives is the copyright holder for the Stuckey materials.

Storage Location: Lawrence Stuckey collection

Images



Great Northern Railway Steam Shovel & Cars

<http://archives.brandonu.ca/en/permalink/descriptions9979>

Part Of: RG 11 Lawrence Stuckey fonds

Description Level: Item

Series Number: 3.1

Item Number: 1-2002.3.1PE3

Accession Number: 1-2002

GMD: graphic

Date Range: [1905 or 1906]

Physical Description: 3 1/2" x 5"

Material Details: Negative

History /

Biographical:

According to Stuckey and Bain (1996), "The Brandon, Saskatchewan & Hudson's Bay Railway was built and operated as a totally owned subsidiary of the Great Northern Railway. Construction commenced in late 1905 and by the end of 1905, less than a mile of track had been laid north of the boundary at St. John. In 1906, the remaining 68.6 miles to Brandon were laid and service commenced that year. During the Depression of the 1930s, traffic declined significantly and the entire branch was abandoned in 1936. Over much of the branch's length, the ties and rails were laid on the prairie without ballast and today little remains of the line apart from traces where there were cuts and bridges." (p. 18)

Stuckey, L. A., & Bain, D. M. (1996). The Great Northern and Northern Pacific railways in Canada. Calgary, Alberta: British Railway Modellers of North America.

Custodial History:

For custodial history see the collection level description of the Lawrence Stuckey collection.

Scope and Content:

Great Northern Railway steam shovel & earth cars.

| | |
|--------------------|-----------------------------------------------------------------------------------------------------------------------------------------------------------------------------------------------------------------------------|
| Notes: | Used in the construction of the Brandon, Saskatchewan and Hudson's Bay Railway at Bunclody, Manitoba Great Northern Railway photo From the collection of Gilford Copeland of Bunclody, Manitoba Copy negative LAS. |
| Name Access: | Construction of Great Northern (BS&HB) Railway Brandon, Saskatchewan & Hudson's Bay Railway Great Northern Railway |
| Subject Access: | steam shovels railroads railways manmade geographic features construction of bridges bridges Great Northern Railway from Church's Ferry ND to Brandon MB |
| Repro Restriction: | The McKee Archives is the copyright holder for the Stuckey materials. |
| Storage Location: | Lawrence Stuckey collection |

Images

