

S. J. McKee Archives



Sewer pipe installation along 700 block of Rosser Avenue

<http://archives.brandonu.ca/en/permalink/descriptions13736>

Part Of:	Fred McGuinness collection
Description Level:	Item
Series Number:	McG 9
Item Number:	20-2009.46
Accession Number:	20-2009
GMD:	graphic
Date Range:	ca. 1906
Physical Description:	6.5" x 4.25" (b/w)
Material Details:	on matting
Physical Condition:	Photographs have been glued to a backing board that has warped over time

Scope and Content:

Photograph shows street view of north side of Rosser Avenue, primarily the 700 block, along which sewer pipe is being laid. Visible buildings and businesses include: The Fleming Block with Lowes Brothers Clothing and Manitoba Farmers Hedge and Wire Fence Company, the Beaubier Block and its Empire Hotel, A.M. Percival (a grocer), the Brandon Hardware Company (600 block), and the Arlington Hotel (500 block) are visible along the north side of the avenue. The Bank of Hamilton Building is on the southeast corner of 8th Street and Rosser Avenue.

Notes:	Writing on the front of the photograph matting reads: 290. Page appears to be from a photo album.
Name Access:	Fleming Block Empire Hotel D.W. Beaubier Block A.M. Percival Brandon Hardware Company Arlington Hotel Lowes Brothers Clothing
Subject Access:	Street scene downtown grocers storefronts building exteriors sewage construction
Storage Location:	RG 5 photograph storage drawer 2 (hanging photos)

Images



Rosser Avenue, north side 900 block

<http://archives.brandonu.ca/en/permalink/descriptions13799>

Part Of:	Fred McGuinness collection
Description Level:	Item
Series Number:	McG 9
Item Number:	20-2009.108
Accession Number:	20-2009
GMD:	graphic
Date Range:	1882
Physical Description:	7.25" x 4.25" (b/w)
Material Details:	On matting
Physical Condition:	Photograph has pen markings and publishing mark-up notes on front and back of matting

Scope and Content:

Photograph shows the north side of the 900-block of Rosser Avenue, facing west from 9th Street. All the shops appear to be woodframed buildings; the sidewalk has yet to be installed and wooden planks have been laid down in front of the shops. Visible storefronts include: (left to right): Leask & Rose, general merchants (at the 11th Street intersect); Fortier & Bucke - Manufacturers' Agents and CPR Express Co.; The New Era - real estate office; Imperial Bank of Canada; Durand & Macdonald Law Office, T.D. McLean - jeweller; Deacon & Hooper - grocers; and J. Barker Vosburgh - Surgeon & Dentist. The building in the foreground has Rosser Avenue and 9th Street street signs affixed above the entrance to the building. A chuckwagon is parked in front of Fortier & Bucke.

Notes: Writing on the front of the photograph reads: Brandon.

Name Access: Rosser Avenue
 Leask & Rose
 Fortier & Bucke Commision Agents
 The New Era
 Imperial Bank of Canada
 T.D. McLean
 W.A. McDonald soliciter
 J. Barker Vosburgh
 Deacon & Hooper
 9th Street

Subject Access: Brandon business buildings & facilities before 1940
store exteriors
street scenes
jewellers
jewelry stores
jewelry stores
signs and signboards
grocery stores
general stores
banks
surgeons
dentists
lawyers
grocery trade
hardware stores
wagons

Storage Location: McGuinness oversize storage drawer (1-2015)

Related Material: Lawrence Stuckey collection 1-2002.3.1C18

Images





Syndicate Block fire 1916

<http://archives.brandonu.ca/en/permalink/descriptions13999>

Part Of: Fred McGuinness collection
Description Level: Item
Series Number: McG 9
Item Number: 1-2015.69
Accession Number: 1-2015
GMD: graphic
Date Range: 1916
Physical Description: 4.25" x 2.5" (b/w)
Physical Condition: Photograph has hole in bottom right corner
Custodial History:

Photograph was given to Fred McGuinness by Linda Bilkoski (nee Lepard) of Lac du Bonnet, MB.

Scope and Content:

Photograph shows the remains of the Syndicate Block after the fire in January 1916. The building is situated on the southwest corner of Seventh Street and Rosser Avenue. Ice from the firefighting process covers the building. The tailor shop J.S. Laughton & Son (701 Rosser Avenue) can be seen on the north side of Rosser Avenue.

Name Access: 7th Street
Syndicate Block
J.S. Laughton & Son
Rosser Avenue
Subject Access: fires
building exteriors
Brandon business buildings & facilities before 1940
Storage Location: RG 5 photograph storage drawer 2 (hanging photos)
Arrangement:
McG 4.1 File 27

Images





Strathcona Block, H.Lamontagne & Co.

<http://archives.brandonu.ca/en/permalink/descriptions14255>

Part Of: Joseph H. Hughes collection
Creator: Photographer: Frank Gowen, Brandon
Description Level: Item
Series Number: 3-1997.1
Item Number: 3-1997.1.64
Accession Number: 3-1997
Other Numbers: Hughes #64
GMD: graphic
Date Range: 1905
Physical Description: 7.5" x 9.5" (b/w)
Material Details: on matting
Physical Condition: Mat is water stained, emulsive side is stained

Scope and Content:

Photograph shows the recently constructed Strathcona Block. H. Lamontagne & Co. Ltd., Wholesale, occupies the ground floor. Scaffolding is suspended from the north side of the building. Buildings have yet to be erected to the north and south sides of the Strathcona Block.

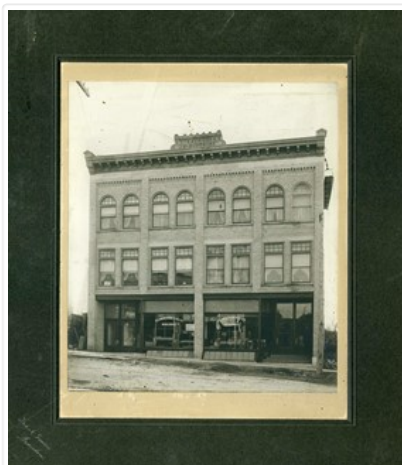
Notes: Back of photograph is stamped: Hughes & Co. Ltd., 1009 Princess Ave., Brandon, Man.

Name Access: Strathcona Block
H. Lamontagne & Co.

Subject Access: Brandon business buildings & facilities before 1940
street scenes
portraits

Storage Location: Hughes oversize drawer

Images





Site services building construction

<http://archives.brandonu.ca/en/permalink/descriptions14358>

Part Of: Brandon University Photograph Collection

Creator: Photographer: Tom Donkersloot

Description Level: Item

Series Number: 2.12

Item Number: BUPC 2.12.27

GMD: graphic

Date Range: May 4, 1971

Physical Description: 4.25" x 3.25" (b/w)

History /

Biographical:

Donkersloot began working at Brandon University in 1970/1971 as the Clerk of Works. From 1973 until his retirement, he was the Director of Physical Plant.

The Site Services building was built in 1971.

Custodial History:

Photograph was taken by Tom Donkersloot during construction and stored in albums in the Physical Plant H-Hut until they were transferred to the McKee Archives by Doug Duncalf in May 2008.

Scope and Content:

Photograph shows construction of Brandon University's Site Services Building located on Louise Avenue at the corner of 20th Street. Also visible are McMaster Hall, Flora Cowan Women's Residence and the John R. Brodie Science Centre. Photograph is looking east/northeast from approximately 21st Street.

Notes: Donkersloot recorded the date and time each photograph was taken on the back of the photos.

Images





Site services building construction

<http://archives.brandonu.ca/en/permalink/descriptions14359>

Part Of: Brandon University Photograph Collection

Creator: Photographer: Tom Donkersloot

Description Level: Item

Series Number: 2.12

Item Number: BUPC 2.12.28

GMD: graphic

Date Range: May 4, 1971

Physical Description: 4.25" x 3.25" (b/w)

History /

Biographical:

Donkersloot began working at Brandon University in 1970/1971 as the Clerk of Works. From 1973 until his retirement, he was the Director of Physical Plant.

The Site Services Building was built in 1971.

Custodial History:

Photograph was taken by Tom Donkersloot during construction and stored in albums in the Physical Plant H-Hut until they were transferred to the McKee Archives by Doug Duncalf in May 2008.

Scope and Content:

Photograph shows construction of Brandon University's Site Services Building located on Louise Avenue at the corner of 20th Street. Also visible are McMaster Hall and part of Darrach Hall. Photograph is looking northeast.

Notes: Donkersloot recorded the date and time each photograph was taken on the back of the photos.

Images





Site services building construction

<http://archives.brandonu.ca/en/permalink/descriptions14360>

Part Of: Brandon University Photograph Collection

Creator: Photographer: Tom Donkersloot

Description Level: Item

Series Number: 2.12

Item Number: BUPC 2.12.29

GMD: graphic

Date Range: May 4, 1971

Physical Description: 4.25" x 3.25" (b/w)

History /

Biographical:

Donkersloot began working at Brandon University in 1970/1971 as the Clerk of Works. From 1973 until his retirement, he was the Director of Physical Plant.

The Site Services Building was built in 1971.

Custodial History:

Photograph was taken by Tom Donkersloot during construction and stored in albums in the Physical Plant H-Hut until they were transferred to the McKee Archives by Doug Duncalf in May 2008.

Scope and Content:

Photograph shows construction of Brandon University's Site Services Building located on Louise Avenue at the corner of 20th Street. Photograph is looking northwest.

Notes: Donkersloot recorded the date and time each photograph was taken on the back of the photos.

Images





Curtis block - Baldur, MB

<http://archives.brandonu.ca/en/permalink/descriptions14401>

Part Of: James Wall collection

Description Level: Item

Series Number: Box 2

Item Number: 12-2004.8

Accession Number: 12-2004

GMD: graphic

Date Range: [1900-1904]

Physical Description: 5.6" x 4" (b/w)

Material Details: On matting (7.5" x 5.6")

Physical Condition: good

History /

Biographical:

The Curtis Block was built in 1900, possibly by Fred Stevens.

Custodial History:

See collection level description for the James Douglas Wall collection.

Scope and Content:

Image of the Curtis Block in Baldur, MB. The Victoria Hall, for public performances, was located on the upper floor. A group of men, one holding a hockey stick, and a dog are standing in front of the street entrance to the building.

Subject Access: rural images

Storage Location: 2004 accessions

Images





Fowler block - Baldur, MB

<http://archives.brandonu.ca/en/permalink/descriptions14402>

Part Of: James Wall collection
Description Level: Item
Series Number: Box 2
Item Number: 12-2004.9
Accession Number: 12-2004
GMD: graphic
Date Range: [1900-1904]
Physical Description: 5.5" x 4" (b/w)
Material Details: On matting (6.4" x 4.25")
Physical Condition: good

History /

Biographical:

The Fowler Block in Baldur, MB was built in 1899 by Alex Fowler.

Custodial History:

See collection level description for the James Douglas Wall collection.

Scope and Content:

Image of the Fowler Block in Baldur, MB. On the left is a shoe and harness shop owned and operated by the Fowlers from 1899-1978. On the right is J. Smith & Co. Merchants, a grocery and dry goods store. As of 2000, a grocery store still occupied the premises. Men are standing in front of the entrance to the two stores.

Subject Access: rural images
Storage Location: 2004 accessions

Images





James D. Campbell

<http://archives.brandonu.ca/en/permalink/descriptions2161>

Part Of: Brandon University Photograph Collection
Description Level: Item
Series Number: 8
Item Number: 8.C.2
GMD: graphic
Date Range: 1969
Physical Description: 2.5" x 3.5" (b/w)
Scope and Content:
Portrait of James D. Campbell (Economics Department).



Morley D. English

<http://archives.brandonu.ca/en/permalink/descriptions2228>

Part Of: Brandon University Photograph Collection
Description Level: Item
Series Number: 8
Item Number: 8.E.7
GMD: graphic
Date Range: 1965
Physical Description: 2.5" x 3.5" (b/w)
Scope and Content:
Graduation portrait of Morley D. English, class of 1965 and Brandon University Faculty member (Economics) from 1967-1970.



ARCH 4: Makotchi-Ded Dontipi locale

<http://archives.brandonu.ca/en/permalink/descriptions10215>

Part Of: RG 7 Beverley Nicholson fonds
Description Level: Series
Series Number: 4
Accession Number: 1-2010
GMD: multiple media
Date Range: 1992 to 2002

History /

Biographical:

Introduction

Information on archaeological materials in this locale first came to the attention of Dr. Nicholson through Doug Jackson, a local artifact collector from Souris. Doug had observed archaeological materials that included bone, ceramics and lithic material that had been exposed by municipal road building activity, northwest of Lauder Manitoba

Environment

The Makotchi-Ded Dontipi locale is located among stabilized sand dunes in the Lauder Sandhills in Southwestern Manitoba, northwest of the village of Lauder. The area is a mosaic of medium grass prairie and copses of aspen poplar and aspen-oak, together with intermittent sedge grass marshes and small ponds. These wetlands are bordered with balsam poplar, water birch, willows and red osier dogwood.

The well-drained upland forest also contains saskatoon, chokecherry, wild current, hazelnut bushes and occasional wild plums. Lowland areas have nannyberries and high-bush cranberry. Wild strawberries grow in lightly shaded areas along trail margins and in open patches in aspen forest.

History of Excavations

The Makotchi-Ded Dontipi locale is a virtual "island" of forest and marshlands in a vast expanse of mixed grass prairie. This archaeologically and environmentally rich area was given the Dakota name Makotchi-Ded Dontipi, meaning "the place where we live".

Summation

Prior to European settlement, the area was a rich environment for hunter-gatherer people. Archaeological investigations from 1992 to 2002 have revealed numerous sites within the locale. Some of these sites have been extensively excavated while others have been identified or tested.

Seven sites that have been identified in this locale range in age from the historic through protohistoric periods and extend into the middle precontact period. The major sites are the initial Middle Missouri Duthie site, the late precontact Jackson, Bradshaw sites and the protohistoric Twin Fawns, Schuddemat and Hollow B sites. The multi-component Vera site includes historic Métis, late precontact Vickers Focus, and middle precontact Besant, Pelican Lake, McKean Complex and Oxbow occupations. Over 230 units were excavated as well as numerous test pits and several extensive surveys.

Scope and Content:

Scope and Content

The Series has been divided into seven sub-series, including (1) Duthie site (2) Jackson site (3) Twin Fawns site (4) Vera site (5) Schuddemat site (6) Bradshaw site (7) Hollow B site.

Name Access: Makotchi-Ded Dontipi locale

Subject Access: Archaeology

Arrangement:

Series is arranged by site and by year of field work.



Duthie site DiMe-16

<http://archives.brandonu.ca/en/permalink/descriptions10216>

Part Of: RG 7 Beverley Nicholson fonds

Description Level: Sub-series
Series Number: 4.1
Accession Number: 1-2010
GMD: multiple media
Date Range: 1992-2002

History /

Biographical:

The Duthie site is the first site identified in the Makotchi-Ded Dontipi locale. It was reported to Dr. Bev Nicholson by Doug Jackson, a local collector who had observed archaeological materials that had been exposed during the construction of Maple Hill Road northwest of Lauder. The site is named after the landowner, Randy Duthie.

The initial inspection of the exposed materials indicated that the eastern half of the site had been severely impacted by raising a road grade using an elevating grader. However, an undetermined amount of the site remained to the west, flanked by a low sand dune. Testing and preliminary excavations were conducted in 1992-93. In 1994 a field school added to the excavated sample. The undisturbed portion of the site, west of Maple Hill Road was situated at the base of a low sand dune and had an aspen and willow forest cover. The water table was approximately one meter below surface at the time of excavation. A rising water table has since prevented further excavations.

Two dates on bone collagen were obtained during excavations. These were 880+/-80 B.P. (Beta 62705) and 970+/-40 B.P. cal. 1030 A.D. (TO 13366). These dates are consistent with an Initial Middle Missouri cultural assignment. The site occupation is identified by the distinctive ceramics found there. Ceramics at the Duthie Site are tool impressed with incising and lip modeling with fabric impressions on most vessels. Jill Taylor analysed the ceramics from the site for a Specialist thesis, Brandon University (1994) and a Masters of Arts degree from the University of Saskatchewan. (Taylor 1995).

Analysis of residue from Duthie site pottery by Matthew Boyd recovered corn (*Zea mays*) phytoliths and bean (*Phaseolus* sp.) starch grains indicating consumption of these domesticates at the Duthie site. (Boyd 2006)

The occupation of this site indicates a migration of people from the south who were well acquainted with horticultural farming. These people had previously migrated to South Dakota following river valleys into the central plains from the eastern woodlands during late Hopewell times. It appears that they later migrated well to the north into southern Manitoba but there is no evidence that they remained there for more than a single year.

Boyd, M., C. Surette and B.A. Nicholson. 2006 Archaeobotanical Evidence of Prehistoric Maize (*Zea mays*) Consumption at the Northern Edge of the Great Plains. *Journal of Archaeological Science* 33: 1129-1140.

Taylor, J. 1994 An analysis of the ceramics recovered during 1992 and 1993 at the Precontact Duthie Site (DiMe-16). Specialist thesis, Brandon University.

Scope and Content:

The Series has been divided into seven sub-series, including (1) Duthie site (2) Jackson site (3) Twin Fawns site (4) Vera site (5) Schuddemat site (6) Bradshaw site (7) Hollow B site.

Name Access: Duthie site DiMe-16
Subject Access: Archaeology
Makotchi-Ded Dontipi locale
Duthie site DiMe-16



Crepeelee site 2003 - field journals

<http://archives.brandonu.ca/en/permalink/descriptions10217>

Part Of: RG 7 Beverley Nicholson fonds

Description Level: sub sub sub series

Series Number: 1.2.1.2

Accession Number: 1-2010

GMD: multiple media

Date Range: 2003

Material Details: Field journals have been scanned in multi-page PDF files.

History /

Biographical:

The Crepeelee site was excavated in 2003 as Crepeelee 3. Standard archaeological methods were used to excavate the units. Excavation units were initially numbered as units 10, 11, 12 & 13. These numbers have been changed on the catalogue to XU 110 – 113, due to duplication in 2005. Corresponding documents have been changed to reflect the amended excavation unit numbers, however the field journals may contain the initial numbers.

Scope and Content:

Record of daily observations at the site including: excavation methods, items recovered, features, local environment and weather.

Name Access: Crepeelee site 2003 - field journals

Subject Access: Archaeology
Crepeelee locale
Crepeelee site DiMe-29
Crepeelee site 2003



Scott Block (with clock tower), Virden, Manitoba

<http://archives.brandonu.ca/en/permalink/descriptions10373>

Part Of: RG 11 Lawrence Stuckey fonds

Creator: L.A. Stuckey

Description Level: Item

Series Number: 3.3

Item Number: 1-2002.3.3.CPR[44]

Accession Number: 1-2002

GMD: graphic

Date Range: November 22, 1979

Physical Description: 2.25" x 2.25" (b/w)

Material Details: Negative

Custodial History:

For custodial history see the collection level description of the Lawrence Stuckey collection.

Scope and Content:

Image of the Scott block (with clock tower), at Virden, Manitoba, taken along the CPR Broadview substation rail lines.

Name Access: Virden, Manitoba

CPR Broadview substation

Subject Access: railways

public buildings

Buildings

Repro Restriction: The McKee Archives is the copyright holder of the Stuckey materials.

Storage Location: Lawrence Stuckey collection

Images





Town Hall (Scott block), Virden, Manitoba

<http://archives.brandonu.ca/en/permalink/descriptions10374>

Part Of: RG 11 Lawrence Stuckey fonds

Creator: L.A. Stuckey

Description Level: Item

Series Number: 3.3

Item Number: 1-2002.3.3.CPR[45a]

Accession Number: 1-2002

GMD: graphic

Date Range: February 21, 1982

Physical Description: 2.25" x 2.25" (b/w)

Material Details: Negative

Custodial History:

For custodial history see the collection level description of the Lawrence Stuckey collection.

Scope and Content:

Image of the town hall (Scott block), at Virden, Manitoba, taken along the CPR Broadview substation rail lines.

Name Access: Virden, Manitoba

CPR Broadview substation

Subject Access: railways

public buildings

Buildings

Repro Restriction: The McKee Archives is the copyright holder of the Stuckey materials.

Storage Location: Lawrence Stuckey collection

Arrangement:

[Mr. Stuckey put two negatives in same envelope. We have separated them and numbered them (45a) and (45b)].

Images





Town Hall (Scott block), Virden, Manitoba

<http://archives.brandonu.ca/en/permalink/descriptions10375>

Part Of: RG 11 Lawrence Stuckey fonds

Creator: L.A. Stuckey

Description Level: Item

Series Number: 3.3

Item Number: 1-2002.3.3.CPR[45b]

Accession Number: 1-2002

GMD: graphic

Date Range: February 21, 1982

Physical Description: 2.25" x 2.25" (b/w)

Material Details: Negative

Custodial History:

For custodial history see the collection level description of the Lawrence Stuckey collection.

Scope and Content:

Image of the town hall (Scott block), at Virden, Manitoba, taken along the CPR Broadview substation rail lines.

Name Access: Virden, Manitoba

CPR Broadview substation

Subject Access: railways

public buildings

Buildings

Repro Restriction: The McKee Archives is the copyright holder of the Stuckey materials.

Storage Location: Lawrence Stuckey collection

Arrangement:

[Mr. Stuckey put two negatives in same envelope. We have separated them and numbered them (45a) and (45b)].

Images





Town Hall (Scott block), Virden, Manitoba

<http://archives.brandonu.ca/en/permalink/descriptions10376>

Part Of: RG 11 Lawrence Stuckey fonds

Creator: L.A. Stuckey

Description Level: Item

Series Number: 3.3

Item Number: 1-2002.3.3.CPR[45b]

Accession Number: 1-2002

GMD: graphic

Date Range: February 21, 1982

Physical Description: 2.25" x 2.25" (b/w)

Material Details: Negative

Custodial History:

For custodial history see the collection level description of the Lawrence Stuckey collection.

Scope and Content:

Image of the town hall (Scott block), at Virden, Manitoba, taken along the CPR Broadview substation rail lines.

Name Access: Virden, Manitoba

CPR Broadview substation

Subject Access: railways

public buildings

Buildings

Repro Restriction: The McKee Archives is the copyright holder of the Stuckey materials.

Storage Location: Lawrence Stuckey collection

Arrangement:

[Mr. Stuckey put two negatives in same envelope. We have separated them and numbered them (45a) and (45b)].

Images





Casselman survey - photographs

<http://archives.brandonu.ca/en/permalink/descriptions10734>

Part Of: RG 7 Beverley Nicholson fonds

Description Level: Sub sub series

Series Number: 1.1.5

Accession Number: 1-2010

GMD: graphic

Date Range: 2003

Physical Description: 11 photographs

Material Details: JPEGs

Scope and Content:

Sub sub series consists of photographs taken during the Casselman survey.

Name Access: Casselman survey - photographs

Subject Access: Crepeele locale
Casselman survey



Casselman survey - James Graham writing notes

<http://archives.brandonu.ca/en/permalink/descriptions10736>

Part Of:	RG 7 Beverley Nicholson fonds
Description Level:	Item
Series Number:	1.1.5
Item Number:	1.1.5.3
Accession Number:	1-2010
GMD:	graphic
Date Range:	2003
Physical Description:	1200 x 900 (847 KB)
Material Details:	JPEG
Name Access:	Casselman survey - photographs
Subject Access:	Archaeology Crepeele locale Casselman survey

Images

