

S. J. McKee Archives



Brandon street cars in front of Winter Fair Building on 10th Street

<http://archives.brandonu.ca/en/permalink/descriptions13753>

Part Of: Fred McGuinness collection
Description Level: Item
Series Number: McG 9
Item Number: 20-2009.64
Accession Number: 20-2009
GMD: graphic
Date Range: 1913
Physical Description: 5.5" x 3.5" (b/w)
Material Details: postcard
Physical Condition: Postcard is discoloured around the edges

History /

Biographical:

According to the Brandon Daily Sun (07 May 1913), the first three street cars (Nos. 10, 9, and 7) arrived in Brandon on the evening of May 6, 1913. The cars were shipped via Canadian National Rail to Brandon from Winnipeg and stored at the railway siding on McTavish Avenue between 8th and 9th Streets. The daily paper (15 May 1915) reported that a test run for the street cars was scheduled for May 16, 1913. The City Clerk published a public notice in the paper (29 May 1913) announcing the formal opening of the "Brandon Municipal Street Raily" for on Monday, June 2, from 2 p.m. to 4 p.m. at city hall where the cars would be displayed.

Custodial History:

Donated to Fred McGuinness by Allena Strath (nee Coombs).

Scope and Content:

Postcard depicts three municipal street cars parked on the 10th Street tracks in front of the Winter Fair Building. In front of the cars are a group of men wearing suits, hats, and top coats. Two automobiles are parked alongside the street cars. According to Archivist Emeritus Tom Mitchell, the group of men are members of the Brandon Municipal Street Railway Committee. The chairman of the committee, Harry Cater, can be seen in the center-left of the group wearing a watch fob. The committee had assembled for a test run of the street car service, which the Brandon Daily Sun reported to have occurred on Sunday, May 16, 1913.

Notes: Back of postcard reads: First Street Car in Brandon in front of Winter Fair building 1910.

Name Access: Brandon Municipal Railway
Winter Fair Building
Harry Cater
10th Street

Subject Access: street cars
Transportation
cars
automobiles
Storage Location: RG 5 photograph storage drawer 2 (hanging photos)
Related Material: Lawrence Stuckey collection 1-2002.3.112

Images



Tenth Street looking towards CPR Station, Brandon, Man.

<http://archives.brandonu.ca/en/permalink/descriptions13780>

Part Of: Fred McGuinness collection

Description Level: Item

Series Number: McG 9

Item Number: 20-2009.91

Accession Number: 20-2009

GMD: graphic

Date Range: [1917-1919]

Physical Description: 5.5" x 3.5" (colour)

Material Details: postcard

History /

Biographical:

According to Russ Gourluck (Silver Screens on the Prairie, Winnipeg: Great Plains Publications, 2012, 26), the Orpheum Theatre was in operation from 1917 to 1920 when it then became the Willis Theatre.

Scope and Content:

Postcard shows the 100 block of 10th Street facing north. The CPR train station can be seen at the end of 10th Street. The sign for the Rex Cafe is visible on the west side of 10th Street. On the east side of 10th Street, billboards for Campbell & Campbell furniture are visible as well as signs for Pianos and the Orpheum Theatre. Motorists and cyclists share the road. Street car tracks run the length of 10th Street.

Notes: Postcard was manufactured by T.B. [Tichnor Brothers, Inc., 1908-1987] Cambridge, Massachusetts.

Name Access: 10th Street
CPR Station
Orpheum Theatre
Rex Cafe
Campbell & Campbell
Brandon Municipal Railway

Subject Access: street scenes
building exteriors
store exteriors
automobiles
Transportation
street cars
bicycles

Storage Location: RG 5 photograph storage drawer 2 (hanging photos)

Images





Brandon Municipal Railway car in winter

<http://archives.brandonu.ca/en/permalink/descriptions13869>

Part Of: Fred McGuinness collection

Description Level: Item

Series Number: McG 9

Item Number: 20-2009.179

Accession Number: 20-2009

GMD: graphic

Date Range: [19--]

Physical Description: 3.75" x 2.5" (b/w)

Material Details: reproduction

Custodial History:

Image submitted to Fred McGuinness by T. Horobin of Brandon

Scope and Content:

Photograph shows a man, perhaps an engineer standing next to a Brandon Municipal Railway car covered in snow. A Brandon Municipal Railway token/tag is affixed to the image.

Name Access: Brandon Municipal Railway

Subject Access: streetcars

street cars

Transportation

winter

Storage Location: RG 5 photograph storage drawer 2 (hanging photos)

Arrangement:

From 20-2009 File 9

Images



Great Northern wedge snowplow at Minot, ND

<http://archives.brandonu.ca/en/permalink/descriptions10004>

Part Of: RG 11 Lawrence Stuckey fonds

Creator: George H. Harris

Description Level: Item

Series Number: 3.1

Item Number: 1-2002.3.1PE27

Accession Number: 1-2002
GMD: graphic
Date Range: July 1938
Physical Description: 2" x 2 3/4"
Material Details: Negative

History /

Biographical:

According to Stuckey and Bain (1996), "The Brandon, Saskatchewan & Hudson's Bay Railway was built and operated as a totally owned subsidiary of the Great Northern Railway. Construction commenced in late 1905 and by the end of 1905, less than a mile of track had been laid north of the boundary at St. John. In 1906, the remaining 68.6 miles to Brandon were laid and service commenced that year. During the Depression of the 1930s, traffic declined significantly and the entire branch was abandoned in 1936. Over much of the branch's length, the ties and rails were laid on the prairie without ballast and today little remains of the line apart from traces where there were cuts and bridges." (p. 18)

Stuckey, L. A., & Bain, D. M. (1996). The Great Northern and Northern Pacific railways in Canada. Calgary, Alberta: British Railway Modellers of North America.

Custodial History:

For custodial history see the collection level description of the Lawrence Stuckey collection.

Scope and Content:

Great Northern wedge snowplow on ore gondola, Minot, ND.

Notes: From the collection of George H. Harris, Winnipeg, Manitoba.
Stuckey and Bain (1996, p. 21) note that "Built in the company shops, simply by adding a plow to an ore jenny which was filled with rocks, these vehicles were quite effective at removing snow from single tracks."

Name Access: Brandon, Saskatchewan & Hudson's Bay Railway
Great Northern Railway

Subject Access: railroads
railways
freight trains
Great Northern Railway from Church's Ferry ND to Brandon MB

Repro Restriction: The McKee Archives is the copyright holder for the Stuckey materials.

Storage Location: Lawrence Stuckey collection

Images





Great Northern Station at Boissevain

<http://archives.brandonu.ca/en/permalink/descriptions10009>

Part Of: RG 11 Lawrence Stuckey fonds
Creator: George H. Harris
Description Level: Item
Series Number: 3.1
Item Number: 1-2002.3.1PE29
Accession Number: 1-2002
GMD: graphic
Date Range: July 17, 1938
Physical Description: 2 1/2" x 3 1/2"
Material Details: Negative

History /

Biographical:

According to Stuckey and Bain (1996), "The Brandon, Saskatchewan & Hudson's Bay Railway was built and operated as a totally owned subsidiary of the Great Northern Railway. Construction commenced in late 1905 and by the end of 1905, less than a mile of track had been laid north of the boundary at St. John. In 1906, the remaining 68.6 miles to Brandon were laid and service commenced that year. During the Depression of the 1930s, traffic declined significantly and the entire branch was abandoned in 1936. Over much of the branch's length, the ties and rails were laid on the prairie without ballast and today little remains of the line apart from traces where there were cuts and bridges." (p. 18)

Stuckey, L. A., & Bain, D. M. (1996). The Great Northern and Northern Pacific railways in Canada. Calgary, Alberta: British Railway Modellers of North America.

Custodial History:

For custodial history see the collection level description of the Lawrence Stuckey collection.

Scope and Content:

View of the Great Northern Railway's station at Boissevain, Manitoba.

Notes: Copy negative.
Name Access: Brandon, Saskatchewan & Hudson's Bay Railway
Great Northern Railway
Great Northern Railway stations
Subject Access: railroads
railways
railway stations
Great Northern Railway from Church's Ferry ND to Brandon MB
Repro Restriction: The McKee Archives is the copyright holder for the Stuckey materials.
Storage Location: Lawrence Stuckey collection

Images





CPR Station and Lineside buildings, Reston, Manitoba

<http://archives.brandonu.ca/en/permalink/descriptions10356>

Part Of: RG 11 Lawrence Stuckey fonds

Creator: George H. Harris

Description Level: Item

Series Number: 3.3

Item Number: 1-2002.3.3.CPR[77]

Accession Number: 1-2002

GMD: graphic

Date Range: December 25, 1954

Physical Description: 3" x 2" (b/w)

Material Details: Negative

History /

Biographical:

Mr. Stuckey's notes: Collection of George H. Harris, Winnipeg, Manitoba.

Custodial History:

For custodial history see the collection level description of the Lawrence Stuckey collection.

Scope and Content:

Image of the CPR station and lineside buildings in Reston, Manitoba. Image was taken along the CPR lines south of the mainline.

Notes: From the collection of George H. Harris, Winnipeg, Manitoba.

Name Access: Reston

CPR

Subject Access: train stations

Grain elevators

Repro Restriction: The McKee Archives is the copyright holder of the Stuckey materials.

Storage Location: Lawrence Stuckey collection

Images





Wheat City Arena

<http://archives.brandonu.ca/en/permalink/descriptions9306>

Part Of: RG 11 Lawrence Stuckey fonds

Creator: George H. Harris

Description Level: Item

Series Number: 3.1

Item Number: 1-2002.3.1D17

Accession Number: 1-2002

GMD: graphic

Date Range: 1938

Physical Description: 2 1/2" x 4 1/2"

Material Details: Negative

History /

Biographical:

Razed January 1970.

Custodial History:

For custodial history see the collection level description of the Lawrence Stuckey collection.

Scope and Content:

Wheat City Arena (Winter Fair Building)

Notes: Southeast corner of 11th Street & Victoria Ave.

From the collection of George H. Harris, Winnipeg, Man.

Creator provided by the Fred McGuinness collection (20-2009).

Name Access: Wheat City Arena

Royal Manitoba Winter Fair

Subject Access: Arenas

exhibitions

fairs

Brandon Public Buildings

Repro Restriction: The McKee Archives is the copyright holder for the Stuckey materials.

Storage Location: Lawrence Stuckey collection

Images





Prince Edward Hotel - Railway Station

<http://archives.brandonu.ca/en/permalink/descriptions9419>

Part Of: RG 11 Lawrence Stuckey fonds

Creator: George H. Harris

Description Level: Item

Series Number: 3.1

Item Number: 1-2002.3.1DC6f(2)

Accession Number: 1-2002

GMD: graphic

Date Range: June 1940

Physical Description: 3 1/2" x 5"

Material Details: Negative

Custodial History:

For custodial history see the collection level description of the Lawrence Stuckey collection.

Scope and Content:

[East side of Prince Edward Hotel railway station; facing Ninth Street]

Notes: [Mr. Stuckey put six negatives (3 combined negatives) in one envelope. We have separated them and numbered them DC6f(1) through DC6f(6). From a combined negative.]

Name Access: Prince Edward Hotel
Canadian Northern Railway
Canadian National Railway

Subject Access: railway stations
hotels
Brandon hotels

Repro Restriction: The McKee Archives is the copyright holder for the Stuckey materials.

Storage Location: Lawrence Stuckey collection

Images





Brandon Machine Works

<http://archives.brandonu.ca/en/permalink/descriptions9488>

Part Of: RG 11 Lawrence Stuckey fonds

Creator: George H. Harris

Description Level: Item

Series Number: 3.1

Item Number: 1-2002.3.1E15

Accession Number: 1-2002

GMD: graphic

Date Range: 1939

Physical Description: 3 1/2" x 5"

Material Details: Negative

Custodial History:

For custodial history see the collection level description of the Lawrence Stuckey collection.

Scope and Content:

Brandon Machine Works

Notes: This photo was taken entirely by moonlight

Copy negative

Name Access: Brandon Machine Works

Subject Access: businesses

factories

metal fabrication

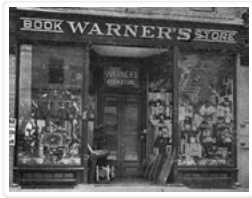
Brandon business buildings & facilities before 1940

Repro Restriction: The McKee Archives is the copyright holder for the Stuckey materials.

Storage Location: Lawrence Stuckey collection

Images





Warner's Book Store

<http://archives.brandonu.ca/en/permalink/descriptions9489>

Part Of: RG 11 Lawrence Stuckey fonds

Creator: George H. Harris

Description Level: Item

Series Number: 3.1

Item Number: 1-2002.3.1E16

Accession Number: 1-2002

GMD: graphic

Date Range: [ca. 1904]

Physical Description: 3 1/2" x 5"

Material Details: Negative

Custodial History:

For custodial history see the collection level description of the Lawrence Stuckey collection.

Scope and Content:

Warner's Book Store

Notes: Located in Syndicate Block

Name Access: Warner's Book Store

Subject Access: businesses

bookselling

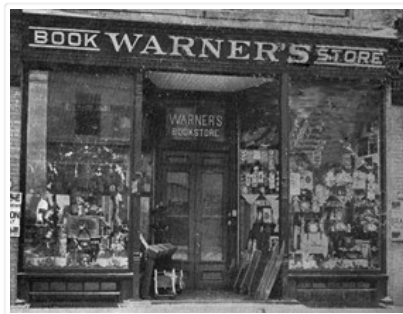
booksellers

Brandon business buildings & facilities before 1940

Repro Restriction: The McKee Archives is the copyright holder for the Stuckey materials.

Storage Location: Lawrence Stuckey collection

Images



CPR Ice House Fire

<http://archives.brandonu.ca/en/permalink/descriptions9613>

Part Of: RG 11 Lawrence Stuckey fonds

Creator: George H. Harris

Description Level: Item

Series Number: 3.1

Item Number: 1-2002.3.1FA4
Accession Number: 1-2002
GMD: graphic
Date Range: May 19, 1951
Physical Description: 3 1/2" x 5"
Material Details: Negative
Custodial History:

For custodial history see the collection level description of the Lawrence Stuckey collection.

Scope and Content:

CPR Ice House Fire with engine 701

Notes: This large ice house, located between the CPR tracks and Assiniboine Avenue at 3rd Street, was filled with blocks of ice from the Assiniboine River each winter. It had a long high platform for [loading ice blocks into] refrigerator cars, and also handled charcoal braziers for heating these same cars in winter. The new ice house structure that was built after this fire was much smaller, as it had an artificial ice plant.

With mechanically temperature-controlled cars replacing ice-cooled refrigerators, it was demolished in the 1970's.

This photograph shows how steam switch engines were used as fire engines. A hose carried in a box under the tender was fitted into a branch of the boiler feed pipe (discharge pipe). When the injector was turned on it gave a nozzle pressure of over 200 psi.

Name Access: CPR Ice House Fire

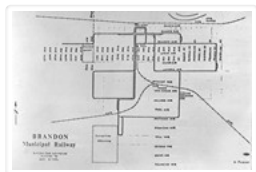
Subject Access: fires
railways
Canadian Pacific Railway
Brandon Fires

Repro Restriction: The McKee Archives is the copyright holder for the Stuckey materials.

Storage Location: Lawrence Stuckey collection

Images





Brandon Municipal Railway Map

<http://archives.brandonu.ca/en/permalink/descriptions9721>

Part Of: RG 11 Lawrence Stuckey fonds

Description Level: Item

Series Number: 3.1

Item Number: 1-2002.3.111

Accession Number: 1-2002

GMD: graphic

Date Range: [19-]

Physical Description: 3 1/2" x 5"

Material Details: Negative

Custodial History:

For custodial history see the collection level description of the Lawrence Stuckey collection.

Scope and Content:

Brandon Municipal Railway Map

Notes: From Canadian Railroad Historical Association

Name Access: Brandon Municipal Railway

Subject Access: public transit

maps

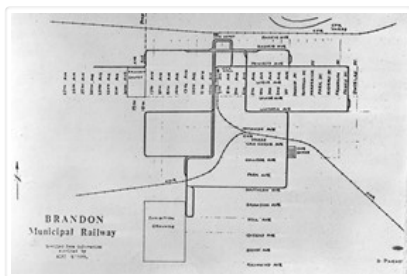
streetcars

Brandon Street Railway

Repro Restriction: The McKee Archives is the copyright holder for the Stuckey materials.

Storage Location: Lawrence Stuckey collection

Images





Brandon Municipal Railway Streetcars

<http://archives.brandonu.ca/en/permalink/descriptions9722>

Part Of: RG 11 Lawrence Stuckey fonds

Description Level: Item

Series Number: 3.1

Item Number: 1-2002.3.112

Accession Number: 1-2002

GMD: graphic

Date Range: 1913

Physical Description: 3 1/2" x 5"

Material Details: Negative

History /

Biographical:

Opening of the Brandon Municipal Railway.

Custodial History:

For custodial history see the collection level description of the Lawrence Stuckey collection.

Scope and Content:

Brandon Municipal Railway streetcars on 10th Street

Notes: Note Winter Fair building (located on the 500 block of 10th Street) in background.

Name Access: Brandon Municipal Railway

Subject Access: public transit

streetcars

Brandon Street Railway

Repro Restriction: The McKee Archives is the copyright holder for the Stuckey materials.

Storage Location: Lawrence Stuckey collection

Images





Brandon Streetcar Passing Winter Fair Building

<http://archives.brandonu.ca/en/permalink/descriptions9723>

Part Of: RG 11 Lawrence Stuckey fonds

Description Level: Item

Series Number: 3.1

Item Number: 1-2002.3.113

Accession Number: 1-2002

GMD: graphic

Date Range: 1913

Physical Description: 3 1/2" x 5"

Material Details: Negative

Custodial History:

For custodial history see the collection level description of the Lawrence Stuckey collection.

Scope and Content:

Brandon Municipal Railway streetcar passing the Winter Fair building (located on the 500 block of 10th Street).

Notes: JM 57.

[This negative was produced using a previously published image. P.E. 03/07/09.]

Name Access: Brandon Municipal Railway

Subject Access: public transit

streetcars

Brandon Street Railway

Repro Restriction: The McKee Archives is the copyright holder for the Stuckey materials.

Storage Location: Lawrence Stuckey collection

Images





Streetcar on Rosser Avenue

<http://archives.brandonu.ca/en/permalink/descriptions9724>

Part Of: RG 11 Lawrence Stuckey fonds

Creator: Clark J. Smith

Description Level: Item

Series Number: 3.1

Item Number: 1-2002.3.114

Accession Number: 1-2002

GMD: graphic

Date Range: 1913

Physical Description: 3 1/2" x 5"

Material Details: Negative

History /

Biographical:

This negative provides an excellent view of Rosser Avenue (looking east from 10th Street) in the early 20th century, and shows one of the first runs for Brandon's streetcar system.

This image was used as the cover image for Lee Clark's Brandon's Politics & Politicians.

Custodial History:

For custodial history see the collection level description of the Lawrence Stuckey collection.

Scope and Content:

Streetcar on Rosser Avenue

Notes: Negative is a copy made from a 8" x 10" negative.

Name Access: Brandon Municipal Railway

Subject Access: public transit

streetcars

Brandon Street Railway

Repro Restriction: The McKee Archives is the copyright holder for the Stuckey materials.

Storage Location: Lawrence Stuckey collection

Images





Streetcar by Clements Drug Store

<http://archives.brandonu.ca/en/permalink/descriptions9725>

Part Of: RG 11 Lawrence Stuckey fonds

Description Level: Item

Series Number: 3.1

Item Number: 1-2002.3.115

Accession Number: 1-2002

GMD: graphic

Date Range: [191-?]

Physical Description: 3 1/2" x 5"

Material Details: Negative

Custodial History:

For custodial history see the collection level description of the Lawrence Stuckey collection.

Scope and Content:

Streetcar by Clements Drug Store

Notes: [View of Rosser Avenue looking west from 9th Street. P.E. 03/07/09.]

Name Access: Brandon Municipal Railway

Subject Access: public transit

streetcars

Brandon Street Railway

Repro Restriction: The McKee Archives is the copyright holder for the Stuckey materials.

Storage Location: Lawrence Stuckey collection

Images





Streetcar on Rosser Avenue

<http://archives.brandonu.ca/en/permalink/descriptions9726>

Part Of: RG 11 Lawrence Stuckey fonds

Description Level: Item

Series Number: 3.1

Item Number: 1-2002.3.116

Accession Number: 1-2002

GMD: graphic

Date Range: [191-?]

Physical Description: 3 1/2" x 5"

Material Details: Negative

Custodial History:

For custodial history see the collection level description of the Lawrence Stuckey collection.

Scope and Content:

Streetcar on Rosser Avenue

Notes: [View of Rosser Avenue looking west from 7th Street.

Note the Syndicate Block on left side of photo. P.E. 06/07/09.]

Name Access: Brandon Municipal Railway

Subject Access: public transit

streetcars

Brandon Street Railway

Repro Restriction: The McKee Archives is the copyright holder for the Stuckey materials.

Storage Location: Lawrence Stuckey collection

Images





Streetcar with Advertising for Knowlton's Boot Shop

<http://archives.brandonu.ca/en/permalink/descriptions9730>

Part Of: RG 11 Lawrence Stuckey fonds

Description Level: Item

Series Number: 3.1

Item Number: 1-2002.3.117

Accession Number: 1-2002

GMD: graphic

Date Range: 1921

Physical Description: 2 1/2" x 3 1/2"

Material Details: Negative

Custodial History:

For custodial history see the collection level description of the Lawrence Stuckey collection.

Scope and Content:

Streetcar on Rosser Avenue

Notes: Note the sign advertising a Spring sale of shoes at Knowlton's Boot Shop

Name Access: Brandon Municipal Railway

Knowlton's Shoe Store

Subject Access: public transit

streetcars

shoe stores

Brandon Street Railway

Repro Restriction: The McKee Archives is the copyright holder for the Stuckey materials.

Storage Location: Lawrence Stuckey collection

Images





Dismantling of Streetcar No. 8

<http://archives.brandonu.ca/en/permalink/descriptions9731>

Part Of: RG 11 Lawrence Stuckey fonds

Creator: George H. Harris

Description Level: Item

Series Number: 3.1

Item Number: 1-2002.3.118

Accession Number: 1-2002

GMD: graphic

Date Range: October 1937

Physical Description: 2 1/2" x 3 1/2"

Material Details: Negative

Custodial History:

For custodial history see the collection level description of the Lawrence Stuckey collection.

Scope and Content:

Dismantling of Streetcar No. 8

Notes: Photo was taken outside the car barn, located at the corner of First Street and College Avenue

Name Access: Brandon Municipal Railway

Subject Access: public transit

streetcars

Brandon Street Railway

Repro Restriction: The McKee Archives is the copyright holder for the Stuckey materials.

Storage Location: Lawrence Stuckey collection

Images





Streetcar Bodies in Tourist Park

<http://archives.brandonu.ca/en/permalink/descriptions9732>

Part Of: RG 11 Lawrence Stuckey fonds

Creator: George H. Harris

Description Level: Item

Series Number: 3.1

Item Number: 1-2002.3.119

Accession Number: 1-2002

GMD: graphic

Date Range: 1937

Physical Description: 2 1/2" x 3 1/2"

Material Details: Negative

History /

Biographical:

Due to the increasing volume of long-distance auto traffic in the 1920's, the city designated the block between Hill & Queen's Avenues and 9th & 10th streets as a "Tourist Camp" with a few basic facilities. After the demise of the Brandon Municipal Railway, several of the old car bodies were placed in the Tourist Camp to be used as cooking & eating shelters. Some may have had sleeping accommodations. Later (ca. 1938?) several were placed in a row along the south side of Victoria Avenue, approximately 28th or 29th St, and were used as the city's first drive-in hamburger place, "The Train Drive-in". This, I believe, only lasted one or two summer seasons. LAS.

Custodial History:

For custodial history see the collection level description of the Lawrence Stuckey collection.

Scope and Content:

Streetcar Bodies in Tourist Park

Name Access: Brandon Municipal Railway

Subject Access: public transit

streetcars

Brandon Street Railway

Repro Restriction: The McKee Archives is the copyright holder for the Stuckey materials.

Storage Location: Lawrence Stuckey collection

Images

