

# S. J. McKee Archives

---



## Wheat Market

<http://archives.brandonu.ca/en/permalink/descriptions9654>

Part Of: RG 11 Lawrence Stuckey fonds

Description Level: Item

Series Number: 3.1

Item Number: 1-2002.3.1H1

Accession Number: 1-2002

GMD: graphic

Date Range: 1887

Physical Description: 3 1/2" x 5"

Material Details: Negative

Custodial History:

For custodial history see the collection level description of the Lawrence Stuckey collection.

Scope and Content:

The wheat market

Notes: View of Pacific Avenue looking east from 8th Street  
Closest elevator: Kelly Bros. Second elevator: Parrish & Lindsay  
Courtesy of The Brandon Sun.

Name Access: Wheat Market

Subject Access: Wheat  
Agriculture  
hotels  
Grain elevators  
Brandon Industries

Repro Restriction: The McKee Archives is the copyright holder for the Stuckey materials.

Storage Location: Lawrence Stuckey collection

## Images

---





## Wilcocks & Currie Livestock Auction

<http://archives.brandonu.ca/en/permalink/descriptions9655>

Part Of: RG 11 Lawrence Stuckey fonds

Description Level: Item

Series Number: 3.1

Item Number: 1-2002.3.1H2

Accession Number: 1-2002

GMD: graphic

Date Range: 1891

Physical Description: 3 1/2" x 5"

Material Details: Negative

History /

Biographical:

New City Hall almost completed - will open Feb. 29, 1892.

Custodial History:

For custodial history see the collection level description of the Lawrence Stuckey collection.

Scope and Content:

Wilcocks & Currie livestock auction

Notes: Located in City Square, just west of City Hall.

From the collection of Jeff Sutherland.

Name Access: Wilcocks & Currie Livestock Auction

Subject Access: Agriculture

auctions

Livestock

cattle

horses

Brandon Industries

Repro Restriction: The McKee Archives is the copyright holder for the Stuckey materials.

Storage Location: Lawrence Stuckey collection

### Images

---



## Brandon Sand & Brick Co.

<http://archives.brandonu.ca/en/permalink/descriptions9656>



Part Of: RG 11 Lawrence Stuckey fonds  
Description Level: Item  
Series Number: 3.1  
Item Number: 1-2002.3.1H3  
Accession Number: 1-2002  
GMD: graphic  
Date Range: [between 1904 and 1920]  
Physical Description: 3 1/2" x 5"  
Material Details: Negative

#### History /

#### Biographical:

Brandon Sand & Brick Co. was better known as "Samson's Brick" for owner-proprietor Samson.

Plant located at 29th Street & Princess Avenue; Offices located in Smith Block.

Used Huennekes (German) system, whereby dried sand was mixed and ground with lime in a tube mill as water was added to slake the lime. The mixture was formed into bricks in a press, then steamed in a cylinder 6 ft. in diameter and 62 ft. long for 10 hours, under pressure of 120 psi, to form a compound like cement. Bricks were ready for use when taken from cylinder. (Ritchie, T. Canada Builds. pp. 219)

In addition to the Belvedere Apartments, many houses are faced with this brick. The rear of the 9th St. MTS building and others downtown buildings were also formed of it. Also used in interior walls of Prince Edward Hotel, Alexander School and many other buildings that were faced with more expensive brick. The product was so good, the plant's demise was likely caused by the post-WWI depression.(LAS)

#### Custodial History:

For custodial history see the collection level description of the Lawrence Stuckey collection.

#### Scope and Content:

Brandon Sand & Brick Co. (Samson's Brick)

Notes: Great Northern Railway enginehouse visible in background [Fred McGuinness collection (20-2009)].

Name Access: Brandon Sand & Brick Co.  
Samson's Brick

Subject Access: industrial minerals  
lime  
sand  
bricks  
Brandon Industries

Repro Restriction: The McKee Archives is the copyright holder for the Stuckey materials.

Storage Location: Lawrence Stuckey collection

#### Images

---





## Western Canada Flour Mills

<http://archives.brandonu.ca/en/permalink/descriptions9657>

Part Of: RG 11 Lawrence Stuckey fonds

Description Level: Item

Series Number: 3.1

Item Number: 1-2002.3.1H4

Accession Number: 1-2002

GMD: graphic

Date Range: 1913

Physical Description: 3 1/2" x 5"

Material Details: Negative

Custodial History:

For custodial history see the collection level description of the Lawrence Stuckey collection.

Scope and Content:

Western Canada Flour Mills

Notes: [This negative was produced using a previously published image from "Brandon in the year 1913". P.E.]

Name Access: Western Canada Flour Mills

Subject Access: Flour  
manufactured products

Flour mills

mills

Brandon Industries

Repro Restriction: The McKee Archives is the copyright holder for the Stuckey materials.

Location Copy: 1-2002.3.9.101

Storage Location: Lawrence Stuckey collection

### Images

---





## Maple Leaf Flour Mill

<http://archives.brandonu.ca/en/permalink/descriptions9658>

Part Of: RG 11 Lawrence Stuckey fonds

Description Level: Item

Series Number: 3.1

Item Number: 1-2002.3.1H5

Accession Number: 1-2002

GMD: graphic

Date Range: 1913

Physical Description: 3 1/2" x 5"

Material Details: Negative

### Custodial History:

For custodial history see the collection level description of the Lawrence Stuckey collection.

### Scope and Content:

#### Maple Leaf Flour Mill

Notes: [This negative was produced using a previously published image from "Brandon in the year 1913". P.E.]

Name Access: Maple Leaf Flour Mill

Subject Access: Flour  
manufactured products  
Flour mills  
mills  
Brandon Industries

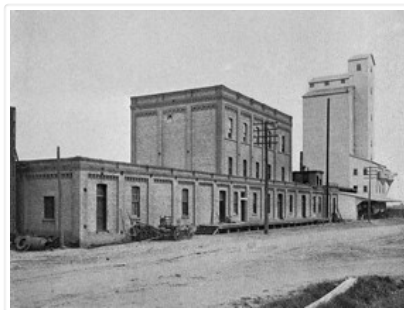
Repro Restriction: The McKee Archives is the copyright holder for the Stuckey materials.

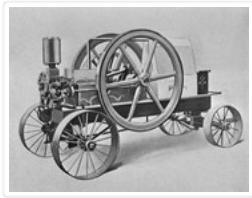
Location Copy: 1-2002.3.9.100

Storage Location: Lawrence Stuckey collection

## Images

---





## Gas Engine

<http://archives.brandonu.ca/en/permalink/descriptions9659>

Part Of: RG 11 Lawrence Stuckey fonds

Description Level: Item

Series Number: 3.1

Item Number: 1-2002.3.1H6

Accession Number: 1-2002

GMD: graphic

Date Range: 1913

Physical Description: 3 1/2" x 5"

Material Details: Negative

Custodial History:

For custodial history see the collection level description of the Lawrence Stuckey collection.

Scope and Content:

Gas engine made in Brandon by Manitoba Engines Limited

Notes: [This negative was produced using a previously published image from "Brandon in the year 1913". P.E.]

Name Access: Gas Engine

Subject Access: manufactured products

engines

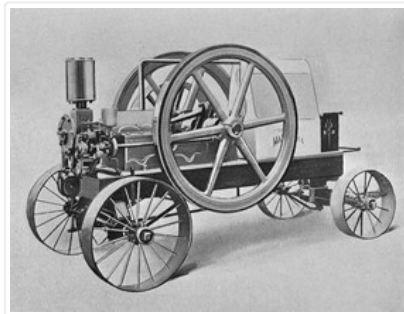
Brandon Industries

Repro Restriction: The McKee Archives is the copyright holder for the Stuckey materials.

Storage Location: Lawrence Stuckey collection

## Images

---







## Brandon Machine Works Products

<http://archives.brandonu.ca/en/permalink/descriptions9660>

Part Of: RG 11 Lawrence Stuckey fonds

Description Level: Item

Series Number: 3.1

Item Number: 1-2002.3.1H7

Accession Number: 1-2002

GMD: graphic

Date Range: 1913

Physical Description: 3 1/2" x 5"

Material Details: Negative

Custodial History:

For custodial history see the collection level description of the Lawrence Stuckey collection.

Scope and Content:

Brandon Machine Works products

Notes: Fanning mill and portable steam engine

[This negative was produced using a previously published image (P.E.).]

Name Access: Brandon Machine Works Products

Subject Access: manufactured products

mills

engines

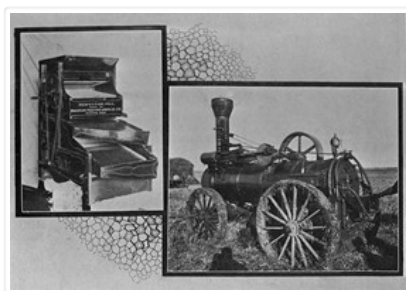
Brandon Industries

Repro Restriction: The McKee Archives is the copyright holder for the Stuckey materials.

Storage Location: Lawrence Stuckey collection

### Images

---





## Brandon Machine Works

<http://archives.brandonu.ca/en/permalink/descriptions9661>

Part Of: RG 11 Lawrence Stuckey fonds

Description Level: Item

Series Number: 3.1

Item Number: 1-2002.3.1H7a

Accession Number: 1-2002

GMD: graphic

Date Range: [18-?]

Physical Description: 3 1/2" x 5"

Material Details: Negative

Custodial History:

For custodial history see the collection level description of the Lawrence Stuckey collection.

Scope and Content:

Brandon Machine Works

Notes: Architect's Drawing

[This negative was produced using a previously published image (P.E.).]

Name Access: Brandon Machine Works

Subject Access: manufactured products

factories

mills

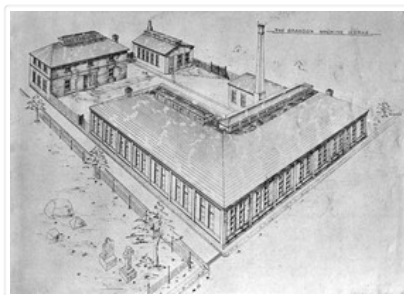
Brandon Industries

Repro Restriction: The McKee Archives is the copyright holder for the Stuckey materials.

Storage Location: Lawrence Stuckey collection

### Images

---





## Brandon Machine Works

<http://archives.brandonu.ca/en/permalink/descriptions9662>

Part Of: RG 11 Lawrence Stuckey fonds

Description Level: Item

Series Number: 3.1

Item Number: 1-2002.3.1H7b

Accession Number: 1-2002

GMD: graphic

Date Range: 1939

Physical Description: 2 1/2" x 3 1/2"

Material Details: Negative

Custodial History:

For custodial history see the collection level description of the Lawrence Stuckey collection.

Scope and Content:

Brandon Machine Works

Notes: Located on the north side of the 1300 block Rosser Avenue.  
This photograph is a time exposure that was taken entirely by moonlight.  
From the collection of George H. Harris, Winnipeg, Man.

Name Access: Brandon Machine Works

Subject Access: manufactured products

factories

mills

Brandon Industries

Repro Restriction: The McKee Archives is the copyright holder for the Stuckey materials.

Storage Location: Lawrence Stuckey collection

### Images

---



## Hanbury Manufacturing Co.

<http://archives.brandonu.ca/en/permalink/descriptions9663>

Part Of: RG 11 Lawrence Stuckey fonds

Description Level: Item

Series Number: 3.1

Item Number: 1-2002.3.1H8

Accession Number: 1-2002  
GMD: graphic  
Date Range: [ca. 1910]  
Physical Description: 3 1/2" x 5"  
Material Details: Negative

History /

Biographical:

This photo provides a good view of the coal sheds along CPR track. Coal was unloaded from boxcars into roof hatches and hauled by drays from doors on avenue side. Only part of a long row of these commercial coal sheds is shown. As a boy I remember several fires in them. LAS.

Custodial History:

For custodial history see the collection level description of the Lawrence Stuckey collection.

Scope and Content:

Hanbury Manufacturing Co.

Notes: View of complete Hanbury Manufacturing complex (from Pacific Avenue looking north), showing the intersection of 6th Street & Assiniboine Ave.  
Note overhead walkway over 6th St. between buildings

Name Access: Hanbury Manufacturing Co.

Subject Access: manufactured products

mills

saw mills

forest products

logs

lumber

Brandon Industries

Repro Restriction: The McKee Archives is the copyright holder for the Stuckey materials.

Storage Location: Lawrence Stuckey collection

## Images

---



## Logs Destined for Hanbury Manufacturing Co. - looking north from 3rd Street

<http://archives.brandonu.ca/en/permalink/descriptions9664>

Part Of: RG 11 Lawrence Stuckey fonds

Description Level: Item

Series Number: 3.1  
Item Number: 1-2002.3.1H9  
Accession Number: 1-2002  
GMD: graphic  
Date Range: [ca. 1910]  
Physical Description: 3 1/2" x 5"  
Material Details: Negative

History /  
Biographical:

Probably the peak of the sawmilling industry in Brandon was "The Big Drive" in 1910, when 125 drivers brought 5 million board feet of timber down the Assiniboine to Hanbury's Mill.

Most of these logs were cut in the Riding Mountains in winter and floated down the Little Saskatchewan and Birdtail Rivers to the Assiniboine.

Custodial History:

For custodial history see the collection level description of the Lawrence Stuckey collection.

Scope and Content:

Logs, destined for Hanbury Manufacturing Co., in the Assiniboine River

Notes: Looking north from 3rd Street.  
[This negative was produced using a previously published image (P.E.).]  
Also see file H9a

Name Access: Hanbury Manufacturing Co.

Subject Access: manufactured products

mills

saw mills

forest products

logs

lumber

Brandon Industries

Repro Restriction: The McKee Archives is the copyright holder for the Stuckey materials.

Storage Location: Lawrence Stuckey collection

## Images

---



Logs Destined for Hanbury Manufacturing Co. - from 1st Street North



<http://archives.brandonu.ca/en/permalink/descriptions9665>

Part Of: RG 11 Lawrence Stuckey fonds

Description Level: Item

Series Number: 3.1

Item Number: 1-2002.3.1H9a

Accession Number: 1-2002

GMD: graphic

Date Range: 1910

Physical Description: 3 1/2" x 5"

Material Details: Negative

History /

Biographical:

Probably the peak of the sawmilling industry in Brandon was "The Big Drive" in 1910, when 125 drivers brought 5 million board feet of timber down the Assiniboine to Hanbury's Mill

Most of these logs were cut in the Riding Mountains in winter and floated down the Little Saskatchewan and Birdtail Rivers to the Assiniboine.

Custodial History:

For custodial history see the collection level description of the Lawrence Stuckey collection.

Scope and Content:

Logs, destined for Hanbury Manufacturing Co., in the Assiniboine River

Notes: View from First Street North

Courtesy of the family of E.C. Higgins (Mrs. Millen Dunbar nee May Higgins).

Also see file H9

Name Access: Hanbury Manufacturing Co.

Subject Access: manufactured products

mills

saw mills

forest products

logs

lumber

Brandon Industries

Repro Restriction: The McKee Archives is the copyright holder for the Stuckey materials.

Storage Location: Lawrence Stuckey collection

## Images

---





## Hanbury Manufacturing Co. - Sash and Door Department

<http://archives.brandonu.ca/en/permalink/descriptions9666>

Part Of: RG 11 Lawrence Stuckey fonds

Description Level: Item

Series Number: 3.1

Item Number: 1-2002.3.1H10

Accession Number: 1-2002

GMD: graphic

Date Range: [ca. 1900]

Physical Description: 3 1/2" x 5"

Material Details: Negative

Custodial History:

For custodial history see the collection level description of the Lawrence Stuckey collection.

Scope and Content:

Hanbury Manufacturing Co. - Sash and Door department

Notes: Courtesy of E. Harden.

Name Access: Hanbury Manufacturing Co.

Subject Access: manufactured products

mills

saw mills

forest products

logs

lumber

Brandon Industries

Repro Restriction: The McKee Archives is the copyright holder for the Stuckey materials.

Storage Location: Lawrence Stuckey collection

### Images

---





## Hanbury Manufacturing Co. - Mill Interior

<http://archives.brandonu.ca/en/permalink/descriptions9667>

Part Of: RG 11 Lawrence Stuckey fonds

Description Level: Item

Series Number: 3.1

Item Number: 1-2002.3.1H11

Accession Number: 1-2002

GMD: graphic

Date Range: 1924

Physical Description: 3 1/2" x 5"

Material Details: Negative

Custodial History:

For custodial history see the collection level description of the Lawrence Stuckey collection.

Scope and Content:

Hanbury Manufacturing Co. - mill interior

Notes: On right: Mr. Tom McKenzie.

Others: Elden Darrow, Jack Silliker. (Info C.H. McKenzie 258-11th Street).

Original loaned by: Mrs. Ruby Miles.

Name Access: Hanbury Manufacturing Co.

Subject Access: manufactured products

mills

saw mills

forest products

logs

lumber

Brandon Industries

Repro Restriction: The McKee Archives is the copyright holder for the Stuckey materials.

Storage Location: Lawrence Stuckey collection

### Images

---



## Cutting Ice from the Assiniboine River





<http://archives.brandonu.ca/en/permalink/descriptions9668>

Part Of: RG 11 Lawrence Stuckey fonds

Creator: L.A. Stuckey

Description Level: Item

Series Number: 3.1

Item Number: 1-2002.3.1H12(1)

Accession Number: 1-2002

GMD: graphic

Date Range: January 21, 1942

Physical Description: 2 1/2" x 2 1/2"

Material Details: Negative

History /

Biographical:

These blocks of ice were used to fill the ice houses of the Wheat City Ice Co. (located north of Rosser Avenue on the west side of 15th Street, and south of Princess Avenue on the east side of 17th Street), the CPR icehouses (at the station and 3rd St. & Assiniboine Ave), and the CNR icehouse (at Forth Street and McTavish Avenue). In addition, large quantities of ice were shipped to smaller towns in railcars (usually old refrigerator cars).

Custodial History:

For custodial history see the collection level description of the Lawrence Stuckey collection.

Scope and Content:

Cutting ice from the Assiniboine River

Notes: This is one of five images that show the method in which ice is cut into blocks and loaded onto sleighs or trucks. Note the large draft horses still in use at this date.

[Mr. Stuckey put five negatives into the same envelope. We have separated them and numbered them H12(1) to H12(5).]

Additional information provided by the Fred McGuinness collection (20-2009).

Name Access: Cutting Ice from the Assiniboine River

Subject Access: ice

icehouses

Brandon Industries

Repro Restriction: The McKee Archives is the copyright holder for the Stuckey materials.

Storage Location: Lawrence Stuckey collection

## Images

---





## Cutting Ice from the Assiniboine River

<http://archives.brandonu.ca/en/permalink/descriptions9669>

Part Of: RG 11 Lawrence Stuckey fonds

Creator: L.A. Stuckey

Description Level: Item

Series Number: 3.1

Item Number: 1-2002.3.1H12(2)

Accession Number: 1-2002

GMD: graphic

Date Range: January 21, 1942

Physical Description: 2 1/2" x 2 1/2"

Material Details: Negative

History /

Biographical:

These blocks of ice were used to fill the ice houses of the Wheat City Ice Co. (located north of Rosser Avenue on the west side of 15th Street, and south of Princess Avenue on the east side of 17th Street), the CPR icehouses (at the station and 3rd St. & Assiniboine Ave), and the CNR icehouse (at Forth Street and McTavish Avenue). In addition, large quantities of ice were shipped to smaller towns in railcars (usually old refrigerator cars).

Custodial History:

For custodial history see the collection level description of the Lawrence Stuckey collection.

Scope and Content:

Cutting ice from the Assiniboine River

Notes: This is one of five images that show the method in which ice is cut into blocks and loaded onto sleighs or trucks. Note the large draft horses still in use at this date.

[Mr. Stuckey put five negatives into the same envelope. We have separated them and numbered them H12(1) to H12(5).]

Additional information provided by the Fred McGuinness collection (20-2009).

Name Access: Cutting Ice from the Assiniboine River

Subject Access: ice

icehouses

Brandon Industries

Repro Restriction: The McKee Archives is the copyright holder for the Stuckey materials.

Storage Location: Lawrence Stuckey collection

### Images

---



## Cutting Ice from the Assiniboine River

<http://archives.brandonu.ca/en/permalink/descriptions9670>

Part Of: RG 11 Lawrence Stuckey fonds

Creator: L.A. Stuckey

Description Level: Item

Series Number: 3.1

Item Number: 1-2002.3.1H12(3)

Accession Number: 1-2002

GMD: graphic

Date Range: January 21, 1942

Physical Description: 2 1/2" x 2 1/2"

Material Details: Negative

History /

Biographical:

These blocks of ice were used to fill the ice houses of the Wheat City Ice Co. (located north of Rosser Avenue on the west side of 15th Street, and south of Princess Avenue on the east side of 17th Street), the CPR icehouses (at the station and 3rd St. & Assiniboine Ave), and the CNR icehouse (at Forth Street and McTavish Avenue). In addition, large quantities of ice were shipped to smaller towns in railcars (usually old refrigerator cars).

Custodial History:

For custodial history see the collection level description of the Lawrence Stuckey collection.

Scope and Content:

Cutting ice from the Assiniboine River

Notes:

This is one of five images that show the method in which ice is cut into blocks and loaded onto sleighs or trucks. Note the large draft horses still in use at this date.

[Mr. Stuckey put five negatives into the same envelope. We have separated them and numbered them H12(1) to H12(5).]

Additional information provided by the Fred McGuinness collection (20-2009).

Name Access: Cutting Ice from the Assiniboine River

Subject Access: ice  
icehouses  
Brandon Industries

Repro Restriction: The McKee Archives is the copyright holder for the Stuckey materials.

Storage Location: Lawrence Stuckey collection

## Images

---



### Cutting Ice from the Assiniboine River

<http://archives.brandonu.ca/en/permalink/descriptions9671>

Part Of: RG 11 Lawrence Stuckey fonds

Creator: L.A. Stuckey

Description Level: Item

Series Number: 3.1

Item Number: 1-2002.3.1H12(4)

Accession Number: 1-2002

GMD: graphic

Date Range: January 21, 1942

Physical Description: 2 1/2" x 2 1/2"

Material Details: Negative

#### History /

#### Biographical:

These blocks of ice were used to fill the ice houses of the Wheat City Ice Co. (located north of Rosser Avenue on the west side of 15th Street, and south of Princess Avenue on the east side of 17th Street), the CPR icehouses (at the station and 3rd St. & Assiniboine Ave), and the CNR icehouse (at Forth Street and McTavish Avenue). In addition, large quantities of ice were shipped to smaller towns in railcars (usually old refrigerator cars).

#### Custodial History:

For custodial history see the collection level description of the Lawrence Stuckey collection.

#### Scope and Content:

Cutting ice from the Assiniboine River

Notes: This is one of five images that show the method in which ice is cut into blocks and loaded onto sleighs or trucks. Note the large draft horses still in use at this date.

[Mr. Stuckey put five negatives into the same envelope. We have separated them and numbered them H12(1) to H12(5).]

Additional information provided by the Fred McGuinness collection (20-2009).

Name Access: Cutting Ice from the Assiniboine River

Subject Access: ice  
icehouses  
Brandon Industries

Repro Restriction: The McKee Archives is the copyright holder for the Stuckey materials.

Storage Location: Lawrence Stuckey collection

## Images

---



### Cutting Ice from the Assiniboine River

<http://archives.brandonu.ca/en/permalink/descriptions9672>

Part Of: RG 11 Lawrence Stuckey fonds

Creator: L.A. Stuckey

Description Level: Item

Series Number: 3.1

Item Number: 1-2002.3.1H12(5)

Accession Number: 1-2002

GMD: graphic

Date Range: January 21, 1942

Physical Description: 2 1/2" x 2 1/2"

Material Details: Negative

## History /

### Biographical:

These blocks of ice were used to fill the ice houses of the Wheat City Ice Co. (located north of Rosser Avenue on the west side of 15th Street, and south of Princess Avenue on the east side of 17th Street), the CPR icehouses (at the station and 3rd St. & Assiniboine Ave), and the CNR icehouse (at Forth Street and McTavish Avenue). In addition, large quantities of ice were shipped to smaller towns in railcars (usually old refrigerator cars).

### Custodial History:

For custodial history see the collection level description of the Lawrence Stuckey collection.

### Scope and Content:

#### Cutting ice from the Assiniboine River

#### Notes:

This is one of five images that show the method in which ice is cut into blocks and loaded onto sleighs or trucks. Note the large draft horses still in use at this date.

[Mr. Stuckey put five negatives into the same envelope. We have separated them and numbered them H12(1) to H12(5).]

Additional information provided by the Fred McGuinness collection (20-2009).

#### Name Access:

Cutting Ice from the Assiniboine River

#### Subject Access:

ice

icehouses

Brandon Industries

#### Repro Restriction:

The McKee Archives is the copyright holder for the Stuckey materials.

#### Storage Location:

Lawrence Stuckey collection

## Images

---





## Spring Park Brick Pile

<http://archives.brandonu.ca/en/permalink/descriptions9673>

Part Of: RG 11 Lawrence Stuckey fonds

Creator: L.A. Stuckey

Description Level: Item

Series Number: 3.1

Item Number: 1-2002.3.1H13(1)

Accession Number: 1-2002

GMD: graphic

Date Range: September 22, 1974

Physical Description: 2 1/2" x 2 1/2"

Material Details: Negative

### History /

#### Biographical:

As a boy my father pointed out this pile of bricks, and pit beside it, and told me a small brick plant had been established here in the early days. The product was of poor quality and the business never became established. LAS.

#### Custodial History:

For custodial history see the collection level description of the Lawrence Stuckey collection.

#### Scope and Content:

Spring Park brick pile near the CPR grade

Notes: Located just south of the CPR mainline at Mile 3 [three miles west of Brandon. P.E.]

[Mr. Stuckey put three negatives in same envelope. We have separated them and numbered them H13(1), H13(2) and H13(3).]

Name Access: Spring Park Brick Pile

Subject Access: sand

bricks

Brandon Industries

Repro Restriction: The McKee Archives is the copyright holder for the Stuckey materials.

Storage Location: Lawrence Stuckey collection

## Images

---

