

S. J. McKee Archives



Crepeelee site 2003 - field journals

<http://archives.brandonu.ca/en/permalink/descriptions10217>

Part Of: RG 7 Beverley Nicholson fonds

Description Level: sub sub sub series

Series Number: 1.2.1.2

Accession Number: 1-2010

GMD: multiple media

Date Range: 2003

Material Details: Field journals have been scanned in multi-page PDF files.

History /

Biographical:

The Crepeelee site was excavated in 2003 as Crepeelee 3. Standard archaeological methods were used to excavate the units. Excavation units were initially numbered as units 10, 11, 12 & 13. These numbers have been changed on the catalogue to XU 110 – 113, due to duplication in 2005. Corresponding documents have been changed to reflect the amended excavation unit numbers, however the field journals may contain the initial numbers.

Scope and Content:

Record of daily observations at the site including: excavation methods, items recovered, features, local environment and weather.

Name Access: Crepeelee site 2003 - field journals

Subject Access: Archaeology
Crepeelee locale
Crepeelee site DiMe-29
Crepeelee site 2003



The Quill duplicates and microfilm

<http://archives.brandonu.ca/en/permalink/descriptions4720>

Part Of: RG 6 Brandon University fonds
Description Level: sub sub sub series
Series Number: 14.5.3.2
Accession Number: 13-2006, 23-2006.
GMD: multiple media
Date Range: 1930-1975
Physical Condition: Generally good. Some editions are fragile.
History /
Biographical:

See sub sub series RG 6 14.5.3 The Quill for History/Bio information.

The duplicates retained were chosen to provide an illustration of the changing content and format of the Quill from 1930-1975. They are primarily for display purposes, as microfilm copies are available for researchers. The original copies of the Quill provide an archival record, but these may be used only under most unusual circumstances. Additional duplicates were culled.

Custodial History:

See sub sub series RG 6 14.5.3 The Quill for Custodial history.

Scope and Content:

The McKee Archives holds duplicate editions of The Quill for the following years: 1930-1931, 1933 to 1942, 1946 to 1949, 1955 to 1959, 1962-1963 and 1975-1976.

The microfilm copies of the Quill cover the period from September 1930 to March 1972, and are located with the originals. The Archives holds both positive and negative versions of the microfilmed editions. The microfilming was made possible through a grant from Dr. Thomas McLeod (Brandon College 1940) in 1999.

Notes: The Quill duplicates and special editions are stored in the same box.
Subject Access: college newspapers
yearbooks
history
Accruals: Further accruals expected.
Repro Restriction: Copyright provisions apply.
Location Original: S.J. McKee Archives
Storage Location: RG 6 Brandon University fonds
Series 14: BUSU
14.5 BUSU publications
14.5.3 The Quill



Lovstrom Block H 1991 - site co-ordinates

<http://archives.brandonu.ca/en/permalink/descriptions12672>

Part Of: RG 7 Beverley Nicholson fonds

Description Level: sub sub sub series

Series Number: 3.9.2.1

Accession Number: 1-2010

GMD: multiple media

Date Range: 1991

Material Details: Field journals have been scanned in multi-page PDF files. Artifact catalogues are PDF files in spreadsheet format. Photographs are in jpeg format.

History /

Biographical:

Large scale excavations of two block sites took place in 1988 under the direction of Bev Nicholson with Brett Waddell as crew chief and Theresa Hill as assistant. Block H consisted of nine additional excavation units.

Scope and Content:

Sub-sub-sub series contains: Summary information of field methodology, number and co-ordinates of excavations, personnel and their staff position.

Name Access: Lovstrom Block H 1991 - site co-ordinates

Subject Access: Archaeology
Lovstrom locale
Lovstrom Block H

Documents

3.9.2.1_Sum.pdf

 Read PDF

 Download PDF

Crepeele site 2008 - summary information

<http://archives.brandonu.ca/en/permalink/descriptions11773>

Part Of: RG 7 Beverley Nicholson fonds



Description Level: sub sub sub series
Series Number: 1.2.5.1
Accession Number: 1-2010
GMD: multiple media
Date Range: 2008
Material Details: Field journals have been scanned in multi-page PDF files. Artifact catalogues are PDF files in spreadsheet format. Photographs are in jpeg format.

History /

Biographical:

The Crepeele site was identified from the results of the Casselman survey and excavated in 2003, 2004, 2005 and 2007.

In 2005 and 2007 the Brandon University Archaeology Field School was held at the Crepeele site in the Crepeele locale.

In 2008 a small crew returned to the site to gather further samples and verify profiles. Three units (XU 50, 51 and 52) were excavated with faunal (animal bone), lithics, fire cracked rock, diagnostic lithics and ceramics recovered from the site. There are 455 records in the artifact catalogue.

Scope and Content:

Sub-sub-sub series contains: Summary information of field methodology, number and co-ordinates of excavations, personnel and their staff position.


Name Access: Crepeele site 2008 - summary information


Subject Access: Archaeology
Crepeele locale
Crepeele site DiMe-29
Crepeele site 2008

Documents

ABR 19.1.1 Crepeele Locale
1.2 Crepeele Site DiMe 29
1.2.5 Crepeele 2008
1.2.5.1 Summary Information
Excavation Unit: Crepeele Coordinates: Excavator:
XU 50: 511067500: Kim Sherman & Bill Fay
XU 51: 511067500: Andrew Lamb & Bill Nicholson
XU 52: 511067500: Andrew Lamb
Grids 1000-50, units 17-41 & 51 were also excavated in 2008

1.2.5.1_C08_summary.
pdf

 Read PDF

 Download PDF



Crepeelee site 2007 - field journals

<http://archives.brandonu.ca/en/permalink/descriptions11774>

Part Of: RG 7 Beverley Nicholson fonds
Description Level: sub sub sub series
Series Number: 1.2.4.2
Accession Number: 1-2010
GMD: multiple media
Date Range: 2007
Material Details: Field journals have been scanned in multi-page PDF files.

History /

Biographical:

In 2007 the Brandon University Archaeology Field School was held at the Crepeelee site in the Crepeelee locale. Denise Ens instructed the school with Kate Decter & Jessica MacKenzie assistants.

Seventeen units were excavated XU30 - 46. Faunal (animal bone), lithics, fire cracked rock, diagnostic lithics and ceramics were recovered from the site. There are over 3050 records in the catalogue.

Scope and Content:

Record of daily observations at the site including: excavation methods, items recovered, features, local environment and weather.

Name Access: Crepeelee site 2007 - field journals
Subject Access: Archaeology
Crepeelee locale
Crepeelee site DiMe-29
Crepeelee site 2007



Crepeelee site 2008 - field journals

<http://archives.brandonu.ca/en/permalink/descriptions11808>

Part Of: RG 7 Beverley Nicholson fonds
Description Level: sub sub sub series
Series Number: 1.2.5.2
Accession Number: 1-2010
GMD: multiple media
Date Range: 2007
Material Details: Field journals have been scanned in multi-page PDF files.
History /
Biographical:

The Crepeelee site was identified from the results of the Casselman survey and excavated in 2003, 2004, 2005 and 2007.

In 2008 a small crew under the direction of Bev Nicholson returned to the site to gather further samples and verify profiles. Three units (XU 50, 51 and 52) were excavated. As well the Graham site 2008 was also excavated.

The field journals contain information about both the Crepeelee and Graham sites.

Scope and Content:

Record of daily observations at the site including: excavation methods, items recovered, features, local environment and weather.

Name Access: Crepeelee site 2008 - field journals
Subject Access: Archaeology
Crepeelee locale
Crepeelee site DiMe-29
Crepeelee site 2008



Crepeelee site 2008 - Bev Nicholson field journal

<http://archives.brandonu.ca/en/permalink/descriptions11809>

Part Of: RG 7 Beverley Nicholson fonds
Description Level: sub sub sub series
Series Number: 1.2.5.2
File Number: 1
Accession Number: 1-2010
GMD: multiple media
Date Range: 2008
Physical Description: 6 pages
Material Details: Field journals have been scanned in multi-page PDF files.

History /

Biographical:

The Crepee site was identified from the results of the Casselman survey and excavated in 2003, 2004, 2005 and 2007.

In 2008 a small crew under the direction of Bev Nicholson returned to the site to gather further samples and verify profiles. Three units (XU 50, 51 and 52) were excavated. As well the Graham site 2008 was also excavated.

The field journals contain information about both the Crepee and Graham sites 2008.

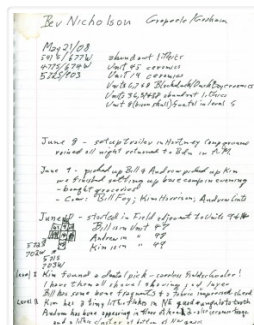
Scope and Content:

Record of daily observations at the site including: excavation methods, items recovered, features, local environment and weather.

Name Access: Crepee site 2008 - Bev Nicholson field journal

Subject Access: Archaeology
Crepee locale
Crepee site DiMe-29
Crepee site 2008

Documents



1.2.5.2.1_C08_BNicholson.pdf

 Read PDF

 Download PDF



Crepee site 2008 - Bill Foy field journal

<http://archives.brandonu.ca/en/permalink/descriptions11812>

Part Of: RG 7 Beverley Nicholson fonds

Description Level: sub sub sub series

Series Number: 1.2.5.2

File Number: 4

Accession Number: 1-2010

GMD: multiple media

Date Range: 2008
Physical Description: 20 pages
Material Details: Field journals have been scanned in multi-page PDF files.
History /
Biographical:

The Crepeele site was identified from the results of the Casselman survey and excavated in 2003, 2004, 2005 and 2007.

In 2008 a small crew under the direction of Bev Nicholson returned to the site to gather further samples and verify profiles. Three units (XU 50, 51 and 52) were excavated. As well the Graham site 2008 was also excavated.

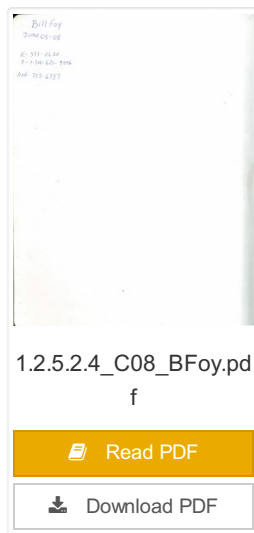
The field journals contain information about both the Crepeele and Graham sites 2008.

Scope and Content:

Record of daily observations at the site including: excavation methods, items recovered, features, local environment and weather.

Name Access: Crepeele site 2008 - Bill Foy field journal
Subject Access: Archaeology
Crepeele locale
Crepeele site DiMe-29
Crepeele site 2008

Documents





Crepeele site 2007 - summary information

<http://archives.brandonu.ca/en/permalink/descriptions11813>

Part Of: RG 7 Beverley Nicholson fonds

Description Level: sub sub sub series

Series Number: 1.2.4.1

Accession Number: 1-2010

GMD: multiple media

Date Range: 2007

Material Details: Field journals have been scanned in multi-page PDF files. Artifact catalogues are PDF files in spreadsheet format. Photographs are in jpeg format.

History /

Biographical:

In 2007 the Brandon University Field School was held at both the Crepeele site in the Crepeele locale. Denise Ens instructed the school with Jessica McKenzie and Kate Decter as teaching assistants.

Seventeen units were excavated (XU3 - 46). Faunal (animal bone), lithics, fire cracked rock, diagnostic lithics and ceramics were recovered from the site.

Scope and Content:


Sub-sub-sub series contains: Summary information of field methodology, number and co-ordinates of excavations, personnel and their staff position.


Name Access: Crepeele site 2007 - summary information

Subject Access: Archaeology
Crepeele locale
Crepeele site DiMe-29
Crepeele site 2007

Documents

1.2.4.1_C07_summary.
pdf

 Read PDF

 Download PDF



Sarah site 2003 - field journals

<http://archives.brandonu.ca/en/permalink/descriptions11831>

Part Of: RG 7 Beverley Nicholson fonds
Description Level: sub sub sub series
Series Number: 1.3.1.2
Accession Number: 1-2010
GMD: multiple media
Date Range: 2003
Material Details: Field journals have been scanned in multi-page PDF files.

History /

Biographical:

The Sarah site was chosen for excavation based on the results of the Casselman survey. The survey recovered significant amounts of faunal remains, some ceramics and lithics from the test pits. Excavations took place in 2003 at Crepeelee West (Units 1-5) and Crepeelee East (Units 6-9). The site was subsequently renamed the Sarah site DiMe-28.

Field journals from 2003 contain notes concerning the Casselman survey, Crepeelee and Sarah site.

Scope and Content:

Record of daily observations at the site including: excavation methods, items recovered, features, local environment and weather.

Name Access: Sarah 2003 - field journals
Subject Access: Archaeology
Crepeelee locale
Sarah site DiMe-28
Sarah 2003 - field journals



Lovstrom Block C - site co-ordinates

<http://archives.brandonu.ca/en/permalink/descriptions12518>

Part Of: RG 7 Beverley Nicholson fonds

Description Level: sub sub sub series

Series Number: 3.4.1.1

Accession Number: 1-2010

GMD: multiple media

Date Range: 1987

Material Details: Field journals have been scanned in multi-page PDF files. Artifact catalogues are PDF files in spreadsheet format. Photographs are in jpeg format.

History /

Biographical:

Large scale excavations of five block sites took place in 1987 under the direction of Bev Nicholson with Jane Gibson as crew chief. Block C consisted of nine excavation units. Miggs Green was Block C assistant.

Scope and Content:

Sub-sub-sub series contains: Summary information of field methodology, number and co-ordinates of excavations, personnel and their staff position.


Name Access: Lovstrom Block C - site co-ordinates

Subject Access: Archaeology
Lovstrom locale
Lovstrom Block C

Documents

3.4.1.1_Sum.pdf

 Read PDF

 Download PDF



Lovstrom Block D 1987 - site co-ordinates

<http://archives.brandonu.ca/en/permalink/descriptions12542>

Part Of:	RG 7 Beverley Nicholson fonds
Description Level:	sub sub sub series
Series Number:	3.5.1.1
Accession Number:	1-2010
GMD:	multiple media
Date Range:	1987
Material Details:	Field journals have been scanned in multi-page PDF files. Artifact catalogues are PDF files in spreadsheet format. Photographs are in jpeg format.

History /

Biographical:

Large scale excavations of five block sites took place in 1987 under the direction of Bev Nicholson with Jane Gibson as crew chief. Block D consisted of 2 excavation units.

Scope and Content:

Sub-sub-sub series contains: Summary information of field methodology, number and co-ordinates of excavations, personnel and their staff position.

Name Access:	Lovstrom Block D 1987 - site co-ordinates
Subject Access:	Archaeology Lovstrom locale Lovstrom Block D

Documents

ABC W & L Lovstrom Locale 1987
3.5.1.1 Summary Information

Large scale excavations of five block sites took place in 1987 under the direction of Bev Nicholson with Jane Gibson as crew chief.

Block D consisted of 2 excavation units. The initial plan was modified as 1987, a subsequent plan with the co-ordinates of 1987/1988 was used in the field as a complete replacement. The final version was used in 1987.

Excavation	Original Co-ords	Modified Co-ords	Crew
3.5.1.1	54°42'20"N	54°42'20"N	Bev Nicholson
3.5.1.2	54°42'15"W	54°42'15"W	John Ferguson

3.5.1.1_Sum.pdf

 Read PDF

 Download PDF



Lovstrom Block D 1988 - site co-ordinates

<http://archives.brandonu.ca/en/permalink/descriptions12555>

Part Of: RG 7 Beverley Nicholson fonds

Description Level: sub sub sub series

Series Number: 3.5.2.1

Accession Number: 1-2010

GMD: multiple media

Date Range: 1988

Material Details: Field journals have been scanned in multi-page PDF files. Artifact catalogues are PDF files in spreadsheet format. Photographs are in jpeg format.

History /

Biographical:

Large scale excavations of five block sites took place in 1988 under the direction of Bev Nicholson with Ian Kuijt as crew chief. Four excavation units were added to Block D.

Scope and Content:

Sub-sub-sub series contains: Summary information of field methodology, number and co-ordinates of excavations, personnel and their staff position.

Name Access: Lovstrom Block D 1988 - site co-ordinates

Subject Access: Archaeology
Lovstrom locale
Lovstrom Block D

Documents

ABC W & L Lovstrom Locale 1988

3.5.2.1 Summary Information

Excavation continued in 1988 under the direction of Bev Nicholson with Ian Kuijt as crew chief.

Four additional excavation units were excavated in Block D. The total dataset was established as 1000, a subsequent dataset with the coordinates of 1000/1000 was used to further complete cataloging. The data was stored in the unit 10.

Excavation	Original Crew	Catalogue Crew	Crew
101	101/101/101	101/101/101	Lovstrom Locale
102	102/102/102	102/102/102	Lovstrom Locale
103	103/103/103	103/103/103	Lovstrom Locale
104	104/104/104	104/104/104	Lovstrom Locale

Further located in 101, 102 and 103

Mapquest Map/Photo/Location

3.5.2.1_Sum.pdf

 Read PDF

 Download PDF



Lovstrom Block E 1987 - site co-ordinates

<http://archives.brandonu.ca/en/permalink/descriptions12569>

Part Of: RG 7 Beverley Nicholson fonds

Description Level: sub sub sub series

Series Number: 3.6.1.1

Accession Number: 1-2010

GMD: multiple media

Date Range: 1987

Material Details: Field journals have been scanned in multi-page PDF files. Artifact catalogues are PDF files in spreadsheet format. Photographs are in jpeg format.

History /

Biographical:

Large scale excavations of five block sites took place in 1987 under the direction of Bev Nicholson with Jane Gibson as crew chief. Block E consisted of 7 excavation units.

Scope and Content:

Sub-sub-sub series contains: Summary information of field methodology, number and co-ordinates of excavations, personnel and their staff position.

Name Access: Lovstrom Block E 1987 - site co-ordinates

Subject Access: Archaeology
Lovstrom locale
Lovstrom Block E

Documents

ARC W & L Lovstrom Locals EDP-4
3.6.1.1 Lovstrom Block E
3.6.1.1 Lovstrom Block E 1987

3.6.1.1 Summary Information:

Large scale excavations of five block sites took place in 1987 under the direction of Bev Nicholson with Jane Gibson as crew chief. Block E consisted of 7 excavation units. The initial dates were established as 1987, a subsequent date with the excavation units of 1988/1989 was used to further the excavation. The excavation units were numbered and 1-100 was assigned to the 100 units.

Excavation	Original Crew	Original Crew	Crew
101	1987/1988	2110/1988	Bev Nicholson/Jane Gibson
102	1987/1988	2110/1988	Bev Nicholson
103	1987/1988	2110/1988	Bev Nicholson
104	1987/1988	2110/1988	Bev Nicholson
105	1987/1988	2110/1988	Bev Nicholson
106	1987/1988	2110/1988	Bev Nicholson
107	1987/1988	2110/1988	Bev Nicholson

3.6.1.1_Sum.pdf

Read PDF

Download PDF



Sarah site 2004 - summary information

<http://archives.brandonu.ca/en/permalink/descriptions11856>

Part Of: RG 7 Beverley Nicholson fonds

Description Level: sub sub sub series

Series Number: 1.3.2.1

Accession Number: 1-2010

GMD: multiple media

Date Range: 2004

Material Details: Field journals have been scanned in multi-page PDF files. Artifact catalogues are PDF files in spreadsheet format. Photographs are in jpeg format.

History /

Biographical:

The Sarah site was initially chosen for excavation based on the results of the Casselman survey. The survey recovered significant amounts of faunal remains, some ceramics and lithics from the test pits. Excavations took place in 2003 at the Sarah site DiMe-28.

In 2004 further excavation took place as part of a Brandon University Archaeology Field School. Units 10 to 18 were excavated with Denise Ens as the instructor and James Graham teaching assistant.

Scope and Content:

Sub-sub-sub series contains: Summary information of field methodology, number and co-ordinates of excavations, personnel and their staff position.

Name Access: Sarah site 2004 - summary information

Subject Access: Archaeology
Crepelee locale
Sarah site DiMe-28
Sarah site 2004

Documents

ABU 11.1 Crepelee Locale
1.3 Sarah DiMe-28
1.3.2.1 Summary Information

In 2004 the Brandon University Field School was held at the Sarah site in the Crepelee locale. Nine units were excavated (10-18-04).

Denise Ens was the instructor and James Graham the Teaching Assistant.

The following units were excavated:

Excavation Unit	Excavator	Recorder
Unit 10	ABU2004W	Cathy Patterson
Unit 11	ABU2004W	James McCreary
Unit 12	ABU2004W	Audrey C. Corney
Unit 13	ABU2004W	James Patterson
Unit 14	ABU2004W	Eric Enns
Unit 15	ABU2004W	Michael Graham
Unit 16	ABU2004W	Paul Thompson
Unit 17	ABU2004W	James Graham, Denise Ens
Unit 18	ABU2004W	James Graham, Denise McCreary

1.3.2.1_Sarah04_Summary.pdf

Read PDF

Download PDF



Graham site 2004 - summary information

<http://archives.brandonu.ca/en/permalink/descriptions11888>

Part Of: RG 7 Beverley Nicholson fonds

Description Level: sub sub sub series

Series Number: 1.4.1.1

Accession Number: 1-2010

GMD: multiple media

Date Range: 2004

Material Details: Field journals have been scanned in multi-page PDF files. Artifact catalogues are PDF files in spreadsheet format. Photographs are in jpeg format.

History /

Biographical:

The Graham site was initially designated as a separate site early in the testing of the Crepeele locale due to what appeared to be a distinction between Early and Late Woodland ceramics. Subsequent testing has shown that this distinction was premature and that the cultural mosaic represented in the western section of the Crepeele locale does not readily separate in this manner.

Scope and Content:

Sub-sub-sub series contains: Summary information of field methodology, number and co-ordinates of excavations, personnel and their staff position.

Name Access: Graham site 2004 - summary information

Subject Access: Archaeology
Crepeele locale
Graham site DiMe-30
Graham site 2004

Documents

ARCH 1.1 Crepeele Locale
1.4 Graham Site 2004-20
1.4.1 Graham 2004
1.4.1.1 Summary Information
Core Unit: Thomas Playford, Core Wayne Kishner and Andrew Richards
Graham Site 1.4.1.1
Excavation Unit: Catalogue Coordinates
Site 1.4.1.1
Excavation: Thomas Playford & Andrew Richards

The units 9 and 11 were excavated with the Crepeele site in 2004 and were re-designated to the Graham site 2004-20 keeping the same unit numbers.

1.4.1.1_Graham04_Summary.pdf

Read PDF

Download PDF



Graham site 2004 - field journals

<http://archives.brandonu.ca/en/permalink/descriptions11890>

Part Of: RG 7 Beverley Nicholson fonds
Description Level: sub sub sub series
Series Number: 1.4.1.2
Accession Number: 1-2010
GMD: multiple media
Date Range: 2004
Material Details: Field journals have been scanned in multi-page PDF files.
History /
Biographical:

Graham units 9 and 14 were excavated with the Crepeele site in 2004 and were reassigned to the Graham site DiMe-30 keeping the same unit numbers.

Field journals from 2004 contain notes concerning the Graham, Sarah and Atkinson sites. The relevant page numbers are noted.

Scope and Content:

Record of daily observations at the site including: excavation methods, items recovered, features, local environment and weather.

Name Access: Graham site 2004 - field journals
Subject Access: Archaeology
Crepeele locale
Graham site DiMe-30
Graham site 2004



Graham site 2005 - summary information

<http://archives.brandonu.ca/en/permalink/descriptions11905>

Part Of: RG 7 Beverley Nicholson fonds
Description Level: sub sub sub series
Series Number: 1.4.2.1
Accession Number: 1-2010
GMD: multiple media
Date Range: 2005
Material Details: Field journals have been scanned in multi-page PDF files. Artifact catalogues are PDF files in spreadsheet format. Photographs are in jpeg format.

History /

Biographical:

The Graham site is located south of the Crepeelee site. Due to the close proximity the Graham and Crepeelee sites have both been the site of the Brandon University Archaeological Field School.

In 2005 both sites were excavated as part of the Field School experience instructed by Denise Ens with teaching assistant James Graham Six units (XU 1-6) were excavated at the Graham site.

Recoveries included faunal (mostly bison), lithics (points, scrapers), and ceramics.

Scope and Content:

Sub-sub-sub series contains: Summary information of field methodology, number and co-ordinates of excavations, personnel and their staff position.

- Name Access:
- Graham site 2005 - summary information
- Subject Access:
- Archaeology
- Crepeelee locale
- Graham site DiMe-30
- Graham site 2005

Documents

ARCH 1.1 Crepeelee Locale

1.2 Graham Site 2005 - 207

1.4.2.1 Graham 2005

1.4.2.1 Summary Information

Field School - Instructor Denise Ens, Assistant James Graham

Excavation Unit	Cartographic Coordinates	Elevation
XU 1	1100000N	1000m
XU 2	1100000N	1000m
XU 3	1100000N	1000m
XU 4	1100000N	1000m
XU 5	1100000N	1000m
XU 6	1100000N	1000m

1.4.2.1_Graham05_Summary.pdf

Read PDF

Download PDF



Graham site 2005 - field journals

<http://archives.bradonu.ca/en/permalink/descriptions11906>

Part Of: RG 7 Beverley Nicholson fonds
Description Level: sub sub sub series
Series Number: 1.4.2.2
Accession Number: 1-2010
GMD: multiple media
Date Range: 2005
Material Details: Field journals have been scanned in multi-page PDF files.

History /

Biographical:

The Graham site is located south of the Crepeele site. Due to the close proximity the Graham and Crepeele sites have both been the site of the Brandon University Archaeological Field School.

In 2005 both sites were excavated as part of the Field School experience instructed by Denise Ens with teaching assistant James Graham. Six units (XU 1-6) were excavated at the Graham site.

Field journals from 2005 contain notes concerning the Graham and Crepeele sites.

Scope and Content:

Record of daily observations at the site including: excavation methods, items recovered, features, local environment and weather.

Name Access: Graham site 2005 - field journals
Subject Access: Archaeology
Crepeele locale
Graham site DiMe-30
Graham site 2005



Graham site 2006 - summary information

<http://archives.bradonu.ca/en/permalink/descriptions11923>

Part Of: RG 7 Beverley Nicholson fonds
Description Level: sub sub sub series
Series Number: 1.4.3.1
Accession Number: 1-2010
GMD: multiple media
Date Range: 2006
Material Details: Field journals have been scanned in multi-page PDF files. Artifact catalogues are PDF files in spreadsheet format. Photographs are in jpeg format.

History /

Biographical:

The Graham site is located south of the Crepeele site. Due to the close proximity the Graham and Crepeele sites have both been the site of the Brandon University Archaeological Field School.

In 2006 a small Brandon University Archaeology Field School was conducted at the Graham site. Four excavations (XU 7, 8 15 & 16) were completed with Denise Ens Instructor and Jessica MacKenzie Teaching Assistant.

Recoveries included faunal (mostly bison), lithics and ceramics Recoveries included faunal (mostly bison), lithics (points, scrapers), and ceramics.

Scope and Content:

Sub-sub-sub series contains: Summary information of field methodology, number and co-ordinates of excavations, personnel and their staff position.

Name Access: Graham site 2006 - summary information

Subject Access: Archaeology
Crepeele locale
Graham site DiMe-30
Graham site 2006

Documents

ABCH 1.1 Crepeele Locale
1.4 Graham Site 1500- 300
1.4.3 Graham 2006/
1.4.3.1 Summary Information
Brandon University Archaeology Field School: Denise Ens Instructor,
Jessica MacKenzie Assistant

Excavation Unit	Grid/Spot Coordinates	Excavator
XU 7	1510212N	Denise Ens
XU 8	1510212N	Denise Ens
XU 15	1509714W	Denise Ens, Jessica MacKenzie
XU 16	1509714W	Denise Ens, Jessica MacKenzie

1.4.3.1_
Graham06_Summary.p
df

Read PDF

Download PDF