

S. J. McKee Archives



Drifts No. 1 Highway Brandon postcard

<http://archives.brandonu.ca/en/permalink/descriptions13935>

Part Of: Fred McGuinness collection

Creator: Photograph by: Jerrett Photo

Description Level: Item

Series Number: McG 9

Item Number: 1-2015.7

Accession Number: 1-2015

GMD: graphic

Date Range: [1931-1958]

Physical Description: 3.5" x 5.5" (b/w)

Material Details: postcard

Scope and Content:

Photograph shows a snowdrift along TransCanada Highway No.1 that has been plowed through. The highway is two-lanes.

Notes: Writing on the back of the photograph reads: AZO Postcard

Name Access: Jerrett Photo

Trans-Canada Highway

Trans Canada Highway

Subject Access: highways

storms

winter

Storage Location: RG 5 photograph storage drawer 2 (hanging photos)

Arrangement:

From loose photos, funny trunk

Images



Medicine Hat Exhibition and Stampede - Parade Day 1

<http://archives.brandonu.ca/en/permalink/descriptions14142>

| | |
|-----------------------|--|
| Part Of: | Fred McGuinness collection |
| Creator: | Photographer: Howard Heid, Medicine Hat News |
| Description Level: | Item |
| Series Number: | McG 9 |
| Item Number: | 1-2015.211 |
| Accession Number: | 1-2015 |
| GMD: | graphic |
| Date Range: | 1962 |
| Physical Description: | 10" x 8" (b/w) |

History /

Biographical:

The Medicine Hat Exhibition and Stampede Parade Day was held on Thursday, July 19, 1962, at 9:30 a.m. The local newspaper reported that approximately 24,000 people were in attendance to see parade marshal Rod Ashburner leading 175 entries consisting of 90 floats, 75 horses, and 10 bands. There were 19 parade categories eligible for \$12,000 in prize money and included: junior and senior cowboys and cowgirls; fancy and Shetland ponies; sulky class open; comic, commercial, industrial and organizational floats; decorated cars; special ranch class; 4-H Clubs; and a non-competitive class.

The parade route started at Second St. and Allowance Ave., from Second St. to Ash Ave., north on Ash to First St. SE., from First St. S.E. to Fourth Ave., south to Second St. to South Railway St., south on South Railway St. to Third St., with a finish at McLeod Trail. A route map was published in the Medicine Hat News the day before the parade.

Aerial photographs of the parade were taken by Medicine Hat News photographer Howard Heid (1930-2005) from the private helicopter of John Bourn. Bourn was a pilot from Woodville, Wisconsin, who chartered his four-seater helicopter for sight-seers at exhibitions and stampedes across the county.

(Sources: Pat Currie, "Let 'Er Go!," Medicine Hat News, 19 July 1962,1; Harald Gunderson, "'Eye in the Sky' Best Parade View," Medicine Hat News, 19 July 1962,1; "Parade Starts at 9:30 Sharp," 18 July 1962)

Scope and Content:

Photograph shows an aerial view of the Medicine Hat Exhibition and Stampede Parade route, with a focus on Second Street SE. A residential area showing homes with extensive backyard gardens can be seen. The South Saskatchewan River can be seen on the right of the photograph.

Notes: This photograph shows the neighbourhood before rezoning and commercial development.

Name Access: Medicine Hat
South Saskatchewan River

Subject Access: parades
floats
aerial photography
aerial views
street scenes
gardens

Repro Restriction: Subject to Canadian Copyright Law

Storage Location: RG 5 photograph storage drawer 2 (hanging photos)

Arrangement:

BR #3 Family photos

Images





Christmas Tree Farm negative set 1, frames 0 to 26

<http://archives.brandonu.ca/en/permalink/descriptions14180>

Part Of: Fred McGuinness collection

Description Level: Item

Series Number: McG 9

Item Number: 1-2015.249

Accession Number: 1-2015

GMD: graphic

Date Range: [1980s-1990s]

Physical Description: 1.5" x 1.5" (b/w)

Material Details: negatives

History /

Biographical:

Fred McGuinness is popularly known for his work as the prairie essayist for CBC Radio's Morningside with Peter Gzowski, a position he held for 17 years. Many of McGuinness' Morningside essays were autobiographical in nature. He often reported about life on Christmas Tree Farm, a section of land where he and his wife, Christine, built their dream home in the late 1970s. The couple planted a Christmas tree farm on the property and Christine maintained an extensive kitchen garden, while Fred tended honey bees. Life on the farm made its way into radiobroadcasts, Neighborly News columns, and the book "Letters from Section 17: A Collection of Morningside Essays" (Winnipeg: Great Plains Publishing, 1999).

Scope and Content:

Set consists of 27 negatives showing different views of the McGuinness property, Christmas Tree Farm, Section 17

Name Access: Christmas Tree Farm

Section 17

Subject Access: residences

farms

trees

Storage Location: RG 5 photograph storage drawer 2 (hanging photos)

Arrangement:

RR #8 photos

Images





Brandon Building Movers (1)

<http://archives.brandonu.ca/en/permalink/descriptions14262>

Part Of: Fred McGuinness collection

Description Level: Item

Series Number: McG 9

Item Number: 1-2015.282

Accession Number: 1-2015

GMD: graphic

Date Range: [1980s]

Physical Description: 1.5 " x 1.5" (colour)

Material Details: negative

Scope and Content:

Photograph shows two men with a Brandon Building Movers truck as they prepare to move a building.

Name Access: Brandon Building Movers

Subject Access: Transportation Manitoba

Storage Location: RG 5 photograph storage drawer 2 (hanging photos)

Arrangement:

Cigar boxes

Images





Site services building construction

<http://archives.brandonu.ca/en/permalink/descriptions14358>

Part Of: Brandon University Photograph Collection

Creator: Photographer: Tom Donkersloot

Description Level: Item

Series Number: 2.12

Item Number: BUPC 2.12.27

GMD: graphic

Date Range: May 4, 1971

Physical Description: 4.25" x 3.25" (b/w)

History /

Biographical:

Donkersloot began working at Brandon University in 1970/1971 as the Clerk of Works. From 1973 until his retirement, he was the Director of Physical Plant.

The Site Services building was built in 1971.

Custodial History:

Photograph was taken by Tom Donkersloot during construction and stored in albums in the Physical Plant H-Hut until they were transferred to the McKee Archives by Doug Duncalf in May 2008.

Scope and Content:

Photograph shows construction of Brandon University's Site Services Building located on Louise Avenue at the corner of 20th Street. Also visible are McMaster Hall, Flora Cowan Women's Residence and the John R. Brodie Science Centre. Photograph is looking east/northeast from approximately 21st Street.

Notes: Donkersloot recorded the date and time each photograph was taken on the back of the photos.

Images





Site services building construction

<http://archives.brandonu.ca/en/permalink/descriptions14359>

Part Of: Brandon University Photograph Collection

Creator: Photographer: Tom Donkersloot

Description Level: Item

Series Number: 2.12

Item Number: BUPC 2.12.28

GMD: graphic

Date Range: May 4, 1971

Physical Description: 4.25" x 3.25" (b/w)

History /

Biographical:

Donkersloot began working at Brandon University in 1970/1971 as the Clerk of Works. From 1973 until his retirement, he was the Director of Physical Plant.

The Site Services Building was built in 1971.

Custodial History:

Photograph was taken by Tom Donkersloot during construction and stored in albums in the Physical Plant H-Hut until they were transferred to the McKee Archives by Doug Duncalf in May 2008.

Scope and Content:

Photograph shows construction of Brandon University's Site Services Building located on Louise Avenue at the corner of 20th Street. Also visible are McMaster Hall and part of Darrach Hall. Photograph is looking northeast.

Notes: Donkersloot recorded the date and time each photograph was taken on the back of the photos.

Images





Site services building construction

<http://archives.brandonu.ca/en/permalink/descriptions14360>

Part Of: Brandon University Photograph Collection

Creator: Photographer: Tom Donkersloot

Description Level: Item

Series Number: 2.12

Item Number: BUPC 2.12.29

GMD: graphic

Date Range: May 4, 1971

Physical Description: 4.25" x 3.25" (b/w)

History /

Biographical:

Donkersloot began working at Brandon University in 1970/1971 as the Clerk of Works. From 1973 until his retirement, he was the Director of Physical Plant.

The Site Services Building was built in 1971.

Custodial History:

Photograph was taken by Tom Donkersloot during construction and stored in albums in the Physical Plant H-Hut until they were transferred to the McKee Archives by Doug Duncalf in May 2008.

Scope and Content:

Photograph shows construction of Brandon University's Site Services Building located on Louise Avenue at the corner of 20th Street. Photograph is looking northwest.

Notes: Donkersloot recorded the date and time each photograph was taken on the back of the photos.

Images





New Pool at #1 and #10

<http://archives.brandonu.ca/en/permalink/descriptions14615>

Part Of: John Everitt collection

Description Level: Item

Item Number: JCE-0005

GMD: graphic

Date Range: November 1983

Material Details: Kodachrome slide

History /

Biographical:

Operated as Pool A, this wooden grain elevator was built by Manitoba Pool Elevators between 1983 and 1984. It was closed by 2007 and demolished by 2008.

Custodial History:

Slide was in the possession of John Everitt before its donation to the SJ McKee Archives in 2007.

Scope and Content:

Item is an image of the new Manitoba Pool Elevator at Brandon, MB, under construction. The elevator was located at highways #1 and #10.

Notes: History/bio information:
<http://www.mhs.mb.ca/docs/sites/brandonelevator2.shtml>

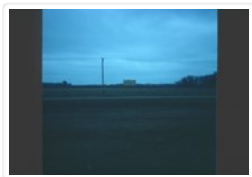
Repro Restriction: The SJ McKee Archives is the copyright holder for the John Everitt collection and as such is providing access to the John Everitt slide collection for educational and research purposes only. To publish, copy or otherwise use these images, written permission must be obtained from the SJ McKee Archives. Any issues arising from the use of an item is the responsibility of the persons desiring to use the item, as is the securing of any necessary permissions for use.

Arrangement:

Original order. Box 1 - Section Man Pool 1

Images





New Pool from #1

<http://archives.brandonu.ca/en/permalink/descriptions14617>

Part Of: John Everitt collection

Description Level: Item

Item Number: JCE-0011

GMD: graphic

Date Range: April 1984

Material Details: Kodachrome slide

History /

Biographical:

Operated as Pool A, this wooden grain elevator was built by Manitoba Pool Elevators between 1983 and 1984. It was closed by 2007 and demolished by 2008.

Custodial History:

Slide was in the possession of John Everitt before its donation to the SJ McKee Archives in 2007.

Scope and Content:

Item is an image of the new Manitoba Pool Elevator at Brandon, MB as seen from #1 highway.

Notes: History/bio

information:<http://www.mhs.mb.ca/docs/sites/brandonelevator2.shtml>

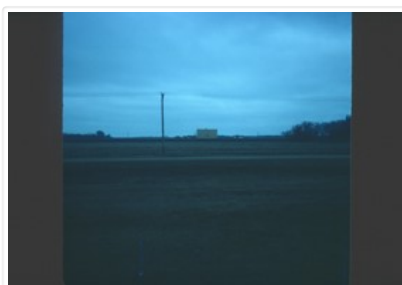
Repro Restriction:

The SJ McKee Archives is the copyright holder for the John Everitt collection and as such is providing access to the John Everitt slide collection for educational and research purposes only. To publish, copy or otherwise use these images, written permission must be obtained from the SJ McKee Archives. Any issues arising from the use of an item is the responsibility of the persons desiring to use the item, as is the securing of any necessary permissions for use.

Arrangement:

Original order. Box 1 - Section Man Pool 1

Images





Old mansion, new district museum, Virden, Manitoba

<http://archives.brandonu.ca/en/permalink/descriptions10365>

Part Of: RG 11 Lawrence Stuckey fonds

Creator: L.A. Stuckey

Description Level: Item

Series Number: 3.3

Item Number: 1-2002.3.3.CPR[39]

Accession Number: 1-2002

GMD: graphic

Date Range: January 8, 1979

Physical Description: 2" x 2" (b/w)

Material Details: Negative

Custodial History:

For custodial history see the collection level description of the Lawrence Stuckey collection.

Scope and Content:

Image of an old mansion, new district museum, at Virden, Manitoba, taken along the CPR Broadview substation rail lines.

Name Access: Virden, Manitoba

CPR Broadview substation

Subject Access: railways

historic sites

Repro Restriction: The McKee Archives is the copyright holder of the Stuckey materials.

Storage Location: Lawrence Stuckey collection

Images





Church, Smart, Manitoba (2 miles north, 1 mile east of)

<http://archives.brandonu.ca/en/permalink/descriptions10454>

Part Of: RG 11 Lawrence Stuckey fonds
Creator: L.A. Stuckey
Description Level: Item
Series Number: 3.3
Item Number: 1-2002.3.3.CNR[149a]
Accession Number: 1-2002
GMD: graphic
Date Range: December 19, 1978; August 4, 1979
Physical Description: 2.25" x 2.25" (b/w)
Material Details: Negative

History /

Biographical:

Stuckey's notes: St. George's, Elton district, built 1901.

Custodial History:

For custodial history see the collection level description of the Lawrence Stuckey collection.

Scope and Content:

Image of a church at Smart, Manitoba (2 miles north, 1 mile east), taken along the CNR mainline, Rivers substation.

Name Access: CNR
Smart, Manitoba
Subject Access: railways
Church buildings/Churches

Repro Restriction: The McKee Archives is the copyright holder of the Stuckey materials.

Storage Location: Lawrence Stuckey collection

Arrangement:

[Mr. Stuckey put three negatives in same envelope. We have separated them and numbered them (149a) to (149c)].

Images





Church, Smart, Manitoba (2 miles north, 1 mile east of)

<http://archives.brandonu.ca/en/permalink/descriptions10455>

Part Of: RG 11 Lawrence Stuckey fonds
Creator: L.A. Stuckey
Description Level: Item
Series Number: 3.3
Item Number: 1-2002.3.3.CNR[149c]
Accession Number: 1-2002
GMD: graphic
Date Range: December 19, 1978; August 4, 1979
Physical Description: 2.25" x 2.25" (b/w)
Material Details: Negative

History /

Biographical:

Stuckey's notes: St. George's, Elton district, built 1901.

Custodial History:

For custodial history see the collection level description of the Lawrence Stuckey collection.

Scope and Content:

Image of a church at Smart, Manitoba (2 miles north, 1 mile east), taken along the CNR mainline, Rivers substation.

Name Access: CNR
Smart, Manitoba
Subject Access: railways
Church buildings/Churches

Repro Restriction: The McKee Archives is the copyright holder of the Stuckey materials.

Storage Location: Lawrence Stuckey collection

Arrangement:

[Mr. Stuckey put three negatives in same envelope. We have separated them and numbered them (149a) to (149c)].

Images





Old grain box wagon and 1939 truck in shed, 1 mile east of Newdale, Manitoba

<http://archives.brandonu.ca/en/permalink/descriptions10733>

Part Of: RG 11 Lawrence Stuckey fonds

Creator: L.A. Stuckey

Description Level: Item

Series Number: 3.3

Item Number: 1-2002.3.3.BNW[274a]

Accession Number: 1-2002

GMD: graphic

Date Range: February 12, 1979

Physical Description: 2.25" x 2.25" (b/w)

Material Details: Negative

Custodial History:

For custodial history see the collection level description of the Lawrence Stuckey collection.

Scope and Content:

Image of an old grain box wagon and 1939 truck in shed, 1 mile east of Newdale, Manitoba.

Notes: [Brandon NW includes communities north of Trans-Canada #1 highway and west of PTH #10.]

Name Access: Newdale, Manitoba

Subject Access: Trucks
vehicles

Repro Restriction: The McKee Archives is the copyright holder of the Stuckey materials.

Storage Location: Lawrence Stuckey collection

Arrangement:

[Mr. Stuckey put three negatives in same envelope. We have separated them and numbered them (274a) to (274c)].

Images





Casselman survey - James Graham writing notes

<http://archives.brandonu.ca/en/permalink/descriptions10736>

| | |
|-----------------------|--|
| Part Of: | RG 7 Beverley Nicholson fonds |
| Description Level: | Item |
| Series Number: | 1.1.5 |
| Item Number: | 1.1.5.3 |
| Accession Number: | 1-2010 |
| GMD: | graphic |
| Date Range: | 2003 |
| Physical Description: | 1200 x 900 (847 KB) |
| Material Details: | JPEG |
| Name Access: | Casselman survey - photographs |
| Subject Access: | Archaeology Crepeele locale Casselman survey |

Images





Casselman survey - group on sand dune

<http://archives.brandonu.ca/en/permalink/descriptions10737>

| | |
|-----------------------|--|
| Part Of: | RG 7 Beverley Nicholson fonds |
| Description Level: | Item |
| Series Number: | 1.1.5 |
| Item Number: | 1.1.5.2 |
| Accession Number: | 1-2010 |
| GMD: | graphic |
| Date Range: | 2003 |
| Physical Description: | 2000 x 1500 (1752 KB) |
| Material Details: | JPEG |
| Name Access: | Casselman survey - photographs |
| Subject Access: | Archaeology Crepeele locale Casselman survey |

Images





Old grain box wagon and 1939 truck in shed, 1 mile east of Newdale, Manitoba

<http://archives.brandonu.ca/en/permalink/descriptions10738>

Part Of: RG 11 Lawrence Stuckey fonds
Creator: L.A. Stuckey
Description Level: Item
Series Number: 3.3
Item Number: 1-2002.3.3.BNW[274b]
Accession Number: 1-2002
GMD: graphic
Date Range: February 12, 1979
Physical Description: 2.25" x 2.25" (b/w)
Material Details: Negative
Custodial History:

For custodial history see the collection level description of the Lawrence Stuckey collection.

Scope and Content:

Image of an old grain box wagon and 1939 truck in shed, 1 mile east of Newdale, Manitoba.

Notes: [Brandon NW includes communities north of Trans-Canada #1 highway and west of PTH #10.]

Name Access: Newdale, Manitoba

Subject Access: Trucks
vehicles

Repro Restriction: The McKee Archives is the copyright holder of the Stuckey materials.

Storage Location: Lawrence Stuckey collection

Arrangement:

[Mr. Stuckey put three negatives in same envelope. We have separated them and numbered them (274a) to (274c)].

Images





Old grain box wagon and 1939 truck in shed, 1 mile east of Newdale, Manitoba

<http://archives.brandonu.ca/en/permalink/descriptions10739>

Part Of: RG 11 Lawrence Stuckey fonds

Creator: L.A. Stuckey

Description Level: Item

Series Number: 3.3

Item Number: 1-2002.3.3.BNW[274c]

Accession Number: 1-2002

GMD: graphic

Date Range: February 12, 1979

Physical Description: 2.25" x 2.25" (b/w)

Material Details: Negative

Custodial History:

For custodial history see the collection level description of the Lawrence Stuckey collection.

Scope and Content:

Image of an old grain box wagon and 1939 truck in shed, 1 mile east of Newdale, Manitoba.

Notes: [Brandon NW includes communities north of Trans-Canada #1 highway and west of PTH #10.]

Name Access: Newdale, Manitoba

Subject Access: Trucks
vehicles

Repro Restriction: The McKee Archives is the copyright holder of the Stuckey materials.

Storage Location: Lawrence Stuckey collection

Arrangement:

[Mr. Stuckey put three negatives in same envelope. We have separated them and numbered them (274a) to (274c)].

Images





Old barn and windmill stand, 1 mile east of Newdale, Manitoba

<http://archives.brandonu.ca/en/permalink/descriptions10740>

Part Of: RG 11 Lawrence Stuckey fonds

Creator: L.A. Stuckey

Description Level: Item

Series Number: 3.3

Item Number: 1-2002.3.3.BNW[275.0a]

Accession Number: 1-2002

GMD: graphic

Date Range: June 26, 1979

Physical Description: 2.25" x 2.25" (b/w)

Material Details: Negative

Custodial History:

For custodial history see the collection level description of the Lawrence Stuckey collection.

Scope and Content:

Image of an old barn and windmill stand, 1 mile east of Newdale, Manitoba.

Notes: [Brandon NW includes communities north of Trans-Canada #1 highway and west of PTH #10.]

Name Access: Newdale, Manitoba

Subject Access: barns

manmade geographic features

Repro Restriction: The McKee Archives is the copyright holder of the Stuckey materials.

Storage Location: Lawrence Stuckey collection

Arrangement:

[Mr. Stuckey put two negatives in same envelope. We have separated them and numbered them (275.0a) to (275.0b)].

Images





Old barn and windmill stand, 1 mile east of Newdale, Manitoba

<http://archives.brandonu.ca/en/permalink/descriptions10742>

Part Of: RG 11 Lawrence Stuckey fonds

Creator: L.A. Stuckey

Description Level: Item

Series Number: 3.3

Item Number: 1-2002.3.3.BNW[275.0b]

Accession Number: 1-2002

GMD: graphic

Date Range: June 26, 1979

Physical Description: 2.25" x 2.25" (b/w)

Material Details: Negative

Custodial History:

For custodial history see the collection level description of the Lawrence Stuckey collection.

Scope and Content:

Image of an old barn and windmill stand, 1 mile east of Newdale, Manitoba.

Notes: [Brandon NW includes communities north of Trans-Canada #1 highway and west of PTH #10.]

Name Access: Newdale, Manitoba

Subject Access: barns

manmade geographic features

Repro Restriction: The McKee Archives is the copyright holder of the Stuckey materials.

Storage Location: Lawrence Stuckey collection

Arrangement:

[Mr. Stuckey put two negatives in same envelope. We have separated them and numbered them (275.0a) to (275.0b)].

Images





Old log barn on road north to Mountain Road, 1 mile north Polonia Corner

<http://archives.brandonu.ca/en/permalink/descriptions10859>

Part Of: RG 11 Lawrence Stuckey fonds

Creator: L.A. Stuckey

Description Level: Item

Series Number: 3.3

Item Number: 1-2002.3.3.BNE[307a]

Accession Number: 1-2002

GMD: graphic

Date Range: October 18, 1979

Physical Description: 2.25" x 2.25" (b/w)

Material Details: Negative

Custodial History:

For custodial history see the collection level description of the Lawrence Stuckey collection.

Scope and Content:

Image of old log barn on road north to Mountain Road, 1 mile north Polonia Corner.

Notes: [Brandon NE includes communities north of Trans-Canada #1 highway and east of PTH #10.]

Name Access: Mountain Road, Manitoba

Subject Access: barns

Repro Restriction: The McKee Archives is the copyright holder of the Stuckey materials.

Storage Location: Lawrence Stuckey collection

Arrangement:

[Mr. Stuckey put two negatives in same envelope. We have separated them and numbered them (307a) and (307b)].

Images

