

# S. J. McKee Archives



## Crepeelee site 2003

<http://archives.brandonu.ca/en/permalink/descriptions11707>

Part Of:	RG 7 Beverley Nicholson fonds
Description Level:	Sub sub series
Series Number:	1.2.1
Accession Number:	1-2010
GMD:	multiple media
Date Range:	2003
Material Details:	Field journals have been scanned in multi-page PDF files. Artifact catalogues are PDF files in spreadsheet format. Photographs are in jpeg format.

### History /

#### Biographical:

The Crepeelee site was identified from the results of the Casselman survey. The site is located within the Crepeelee locale approximately 400 meters to the west of the Sarah site. The units were excavated by Crew Chief James Graham and the crew from the survey.

The Crepeelee site was excavated in 2003 as Crepeelee 3 with the units numbered as units 10, 11, 12 & 13. These numbers have been changed on the catalogue to XU 110 – 113, due to duplication in 2005. Corresponding documents have been changed but there may be some reference to the initial numbers in the field journals.

The artifacts recovered from these four excavations are faunal (animal bone), mainly bison, lithic materials (stone tools and flakes) and some ceramic (pottery). The artifact catalogue has over 600 records.

#### Scope and Content:

Sub-sub-sub series contains: Summary information of field methodology, number and co-ordinates of excavations, personnel and their staff position; Field journals are daily records of recoveries, features and activities at the site; Site records include excavation level and unit summaries, feature sheets, profiles; sample records and maps; Artifact catalogues are lists and identifications of all artifacts recovered; Photographs are of excavation units, features, the landscape and personnel.

Name Access:	Crepeelee site 2003
Subject Access:	Archaeology Crepeelee locale Crepeelee site DiMe-29 Crepeelee site 2003



## Crepeelee site 2008

<http://archives.brandonu.ca/en/permalink/descriptions11807>

Part Of: RG 7 Beverley Nicholson fonds  
Description Level: Sub sub series  
Series Number: 1.2.5  
Accession Number: 1-2010  
GMD: multiple media  
Date Range: 2008  
Material Details: Field journals have been scanned in multi-page PDF files. Artifact catalogues are PDF files in spreadsheet format. Photographs are in jpeg format.

### History /

#### Biographical:

The Crepeelee site was identified from the results of the Casselman survey and excavated in 2003, 2004, 2005 and 2007. In 2005 and 2007 the Brandon University Archaeology Field School was held at the Crepeelee site in the Crepeelee locale.

In 2008 a small crew returned to the site to gather further samples and verify profiles. Three units (XU 50, 51 and 52) were excavated with faunal (animal bone), lithics, fire cracked rock, diagnostic lithics and ceramics recovered from the site. There are 455 records in the artifact catalogue.

#### Scope and Content:

Sub-sub-sub series contains: Summary information of field methodology, number and co-ordinates of excavations, personnel and their staff position; Field journals are daily records of recoveries, features and activities at the site; Site records include excavation level and unit summaries, feature sheets, profiles; sample records and maps; Artifact catalogues are lists and identifications of all artifacts recovered; Photographs are of excavation units, features, the landscape and personnel.

Name Access: Crepeelee site 2008  
Subject Access: Archaeology  
Crepeelee locale  
Crepeelee site DiMe-29  
Crepeelee site 2008



## Crepeelee site 2008 - field journals

<http://archives.brandonu.ca/en/permalink/descriptions11808>

Part Of: RG 7 Beverley Nicholson fonds

Description Level: sub sub sub series

Series Number: 1.2.5.2

Accession Number: 1-2010

GMD: multiple media

Date Range: 2007

Material Details: Field journals have been scanned in multi-page PDF files.

History /  
Biographical:

The Crepeelee site was identified from the results of the Casselman survey and excavated in 2003, 2004, 2005 and 2007.

In 2008 a small crew under the direction of Bev Nicholson returned to the site to gather further samples and verify profiles. Three units (XU 50, 51 and 52) were excavated. As well the Graham site 2008 was also excavated.

The field journals contain information about both the Crepeelee and Graham sites.

### Scope and Content:

Record of daily observations at the site including: excavation methods, items recovered, features, local environment and weather.

Name Access: Crepeelee site 2008 - field journals

Subject Access: Archaeology  
Crepeelee locale  
Crepeelee site DiMe-29  
Crepeelee site 2008



## Crepeelee site 2008 - Bev Nicholson field journal

<http://archives.brandonu.ca/en/permalink/descriptions11809>

Part Of: RG 7 Beverley Nicholson fonds

Description Level: sub sub sub series

Series Number: 1.2.5.2

File Number: 1

Accession Number: 1-2010

GMD: multiple media

Date Range: 2008

Physical Description: 6 pages

Material Details: Field journals have been scanned in multi-page PDF files.

History /

Biographical:

The Crepee site was identified from the results of the Casselman survey and excavated in 2003, 2004, 2005 and 2007.

In 2008 a small crew under the direction of Bev Nicholson returned to the site to gather further samples and verify profiles. Three units (XU 50, 51 and 52) were excavated. As well the Graham site 2008 was also excavated.

The field journals contain information about both the Crepee and Graham sites 2008.

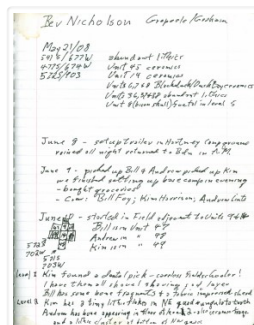
Scope and Content:

Record of daily observations at the site including: excavation methods, items recovered, features, local environment and weather.

Name Access: Crepee site 2008 - Bev Nicholson field journal

Subject Access: Archaeology  
Crepee locale  
Crepee site DiMe-29  
Crepee site 2008

## Documents



1.2.5.2.1\_C08\_BNicholson.pdf

 Read PDF

 Download PDF



## Crepee site 2008 - Bill Foy field journal

<http://archives.brandonu.ca/en/permalink/descriptions11812>

Part Of: RG 7 Beverley Nicholson fonds

Description Level: sub sub sub series

Series Number: 1.2.5.2

File Number: 4

Accession Number: 1-2010

GMD: multiple media

Date Range: 2008  
Physical Description: 20 pages  
Material Details: Field journals have been scanned in multi-page PDF files.  
History /  
Biographical:

The Crepeele site was identified from the results of the Casselman survey and excavated in 2003, 2004, 2005 and 2007.

In 2008 a small crew under the direction of Bev Nicholson returned to the site to gather further samples and verify profiles. Three units (XU 50, 51 and 52) were excavated. As well the Graham site 2008 was also excavated.

The field journals contain information about both the Crepeele and Graham sites 2008.

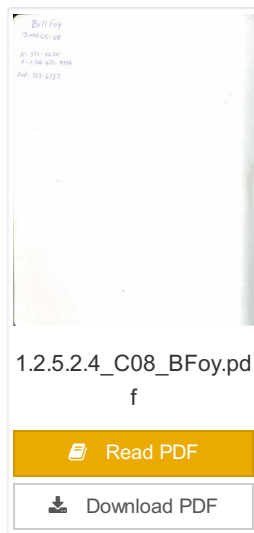
#### Scope and Content:

Record of daily observations at the site including: excavation methods, items recovered, features, local environment and weather.

Name Access: Crepeele site 2008 - Bill Foy field journal  
Subject Access: Archaeology  
Crepeele locale  
Crepeele site DiMe-29  
Crepeele site 2008

## Documents

---





## Crepeele site 2007 - summary information

<http://archives.brandonu.ca/en/permalink/descriptions11813>

Part Of: RG 7 Beverley Nicholson fonds

Description Level: sub sub sub series

Series Number: 1.2.4.1

Accession Number: 1-2010

GMD: multiple media

Date Range: 2007

Material Details: Field journals have been scanned in multi-page PDF files. Artifact catalogues are PDF files in spreadsheet format. Photographs are in jpeg format.

### History /

#### Biographical:

In 2007 the Brandon University Field School was held at both the Crepeele site in the Crepeele locale. Denise Ens instructed the school with Jessica McKenzie and Kate Decter as teaching assistants.

Seventeen units were excavated (XU3 - 46). Faunal (animal bone), lithics, fire cracked rock, diagnostic lithics and ceramics were recovered from the site.

#### Scope and Content:


Sub-sub-sub series contains: Summary information of field methodology, number and co-ordinates of excavations, personnel and their staff position.

Name Access: Crepeele site 2007 - summary information

Subject Access: Archaeology  
Crepeele locale  
Crepeele site DiMe-29  
Crepeele site 2007

## Documents

1.2.4.1\_C07\_summary.  
pdf

 Read PDF

 Download PDF



## Sarah site 2003

<http://archives.brandonu.ca/en/permalink/descriptions11830>

Part Of: RG 7 Beverley Nicholson fonds  
Description Level: Sub sub series  
Series Number: 1.3.1  
Accession Number: 1-2010  
GMD: multiple media  
Date Range: 2003  
Material Details: Field journals have been scanned in multi-page PDF files. Artifact catalogues are PDF files in spreadsheet format. Photographs are in jpeg format.

### History /

#### Biographical:

The Sarah site was chosen for excavation based on the results of the Casselman survey. The survey recovered significant amounts of faunal remains, some ceramics and lithics from the test pits. Excavations took place in 2003 at Crepeele West (Units 1-5) and Crepeele East (Units 6-9). The site was subsequently renamed the Sarah site DiMe-28.

Units 1 to 9 were excavated by supervisor James Graham and crew of Sarah Graham, Mike Evans, Todd Kristensen, Shayne Kolesar, Lisa Sonnenburg and Emily Ansell.

#### Scope and Content:

Sub-sub-sub series contains: Summary information of field methodology, number and co-ordinates of excavations, personnel and their staff position; Field journals are daily records of recoveries, features and activities at the site; Site records include excavation level and unit summaries, feature sheets, profiles; sample records and maps; Artifact catalogues are lists and identifications of all artifacts recovered; Photographs are of excavation units, features, the landscape and personnel.

Name Access: Sarah site 2003  
Subject Access: Archaeology  
Crepeele locale  
Sarah site DiMe-28  
Sarah site 2003



## Sarah site 2003 - field journals

<http://archives.brandonu.ca/en/permalink/descriptions11831>

Part Of: RG 7 Beverley Nicholson fonds  
Description Level: sub sub sub series  
Series Number: 1.3.1.2  
Accession Number: 1-2010  
GMD: multiple media  
Date Range: 2003  
Material Details: Field journals have been scanned in multi-page PDF files.

### History /

#### Biographical:

The Sarah site was chosen for excavation based on the results of the Casselman survey. The survey recovered significant amounts of faunal remains, some ceramics and lithics from the test pits. Excavations took place in 2003 at Crepeelee West (Units 1-5) and Crepeelee East (Units 6-9). The site was subsequently renamed the Sarah site DiMe-28.

Field journals from 2003 contain notes concerning the Casselman survey, Crepeelee and Sarah site.

#### Scope and Content:

Record of daily observations at the site including: excavation methods, items recovered, features, local environment and weather.

Name Access: Sarah 2003 - field journals  
Subject Access: Archaeology  
Crepeelee locale  
Sarah site DiMe-28  
Sarah 2003 - field journals





## Sarah site 2004

<http://archives.brandonu.ca/en/permalink/descriptions11855>

Part Of: RG 7 Beverley Nicholson fonds  
Description Level: Sub sub series  
Series Number: 1.3.2  
Accession Number: 1-2010  
GMD: multiple media  
Date Range: 2004  
Material Details: Field journals have been scanned in multi-page PDF files. Artifact catalogues are PDF files in spreadsheet format. Photographs are in jpeg format.

### History /

#### Biographical:

The Sarah site was initially chosen for excavation based on the results of the Casselman survey. The survey recovered significant amounts of faunal remains, some ceramics and lithics from the test pits. Excavations took place in 2003 at the Sarah site DiMe-28.

In 2004 further excavation took place as part of a Brandon University Archaeology Field School. Units 10 to 18 were excavated with Denise Ens as the instructor and James Graham teaching assistant.

#### Scope and Content:

Sub-sub-sub series contains: Summary information of field methodology, number and co-ordinates of excavations, personnel and their staff position; Field journals are daily records of recoveries, features and activities at the site; Site records include excavation level and unit summaries, feature sheets, profiles; sample records and maps; Artifact catalogues are lists and identifications of all artifacts recovered; Photographs are of excavation units, features, the landscape and personnel.

Name Access: Sarah site 2004  
Subject Access: Archaeology  
Crepeele locale  
Sarah site DiMe-28  
Sarah site 2004



## Sarah site 2004 - summary information

<http://archives.brandonu.ca/en/permalink/descriptions11856>

Part Of: RG 7 Beverley Nicholson fonds

Description Level: sub sub sub series

Series Number: 1.3.2.1

Accession Number: 1-2010

GMD: multiple media

Date Range: 2004

Material Details: Field journals have been scanned in multi-page PDF files. Artifact catalogues are PDF files in spreadsheet format. Photographs are in jpeg format.

### History /

#### Biographical:

The Sarah site was initially chosen for excavation based on the results of the Casselman survey. The survey recovered significant amounts of faunal remains, some ceramics and lithics from the test pits. Excavations took place in 2003 at the Sarah site DiMe-28.

In 2004 further excavation took place as part of a Brandon University Archaeology Field School. Units 10 to 18 were excavated with Denise Ens as the instructor and James Graham teaching assistant.

#### Scope and Content:

Sub-sub-sub series contains: Summary information of field methodology, number and co-ordinates of excavations, personnel and their staff position.

Name Access: Sarah site 2004 - summary information

Subject Access: Archaeology  
Crepelee locale  
Sarah site DiMe-28  
Sarah site 2004

## Documents

ABU 11.1 Crepelee Locale  
1.3 Sarah DiMe-28  
1.3.2.1 Summary Information

In 2004 the Brandon University Field School was held at the Sarah site in the Crepelee locale. Nine units were excavated (10-18).

Denise Ens was the instructor and James Graham the Teaching Assistant.

The following units were excavated:

Excavation Unit	Excavator	Recorder
Unit 10	ABU2004	Cathy Patterson
Unit 11	ABU2004	James Graham
Unit 12	ABU2004	Anthony C. Corney
Unit 13	ABU2004	James Graham
Unit 14	ABU2004	Eric Enns
Unit 15	ABU2004	Michael Graham
Unit 16	ABU2004	Paul Thompson
Unit 17	ABU2004	James Graham, Denise Ens
Unit 18	ABU2004	James Graham, Denise Ens

1.3.2.1\_Sarah04\_Summary.pdf

Read PDF

Download PDF



## Graham site 2004

<http://archives.brandonu.ca/en/permalink/descriptions11887>

Part Of: RG 7 Beverley Nicholson fonds  
Description Level: Sub sub series  
Series Number: 1.4.1  
Accession Number: 1-2010  
GMD: multiple media  
Date Range: 2004  
Material Details: Field journals have been scanned in multi-page PDF files. Artifact catalogues are PDF files in spreadsheet format. Photographs are in jpeg format.

### History /

#### Biographical:

Graham units 9 and 14 were excavated with the Crepeele site in 2004 and were reassigned to the Graham site DiMe-30 keeping the same unit numbers. Tomasin Playford was crew chief in 2004.

The Graham site was initially designated as a separate site early in the testing of the Crepeele locale due to what appeared to be a distinction between Early and Late Woodland ceramics. Subsequent testing has shown that this distinction was premature and that the cultural mosaic represented in the western section of the Crepeele locale does not readily separate in this manner.

#### Scope and Content:

Sub-sub-sub series contains: Summary information of field methodology, number and co-ordinates of excavations, personnel and their staff position; Field journals are daily records of recoveries, features and activities at the site; Site records include excavation level and unit summaries, feature sheets, profiles; sample records and maps; Artifact catalogues are lists and identifications of all artifacts recovered; Photographs are of excavation units, features, the landscape and personnel.

Name Access: Graham site 2004  
Subject Access: Archaeology  
Crepeele locale  
Graham site DiMe-30  
Graham site 2004



## Graham site 2004 - summary information

<http://archives.brandonu.ca/en/permalink/descriptions11888>

Part Of:	RG 7 Beverley Nicholson fonds
Description Level:	sub sub sub series
Series Number:	1.4.1.1
Accession Number:	1-2010
GMD:	multiple media
Date Range:	2004
Material Details:	Field journals have been scanned in multi-page PDF files. Artifact catalogues are PDF files in spreadsheet format. Photographs are in jpeg format.

### History /

#### Biographical:

The Graham site was initially designated as a separate site early in the testing of the Crepeele locale due to what appeared to be a distinction between Early and Late Woodland ceramics. Subsequent testing has shown that this distinction was premature and that the cultural mosaic represented in the western section of the Crepeele locale does not readily separate in this manner.

#### Scope and Content:

Sub-sub-sub series contains: Summary information of field methodology, number and co-ordinates of excavations, personnel and their staff position.

Name Access:	Graham site 2004 - summary information
Subject Access:	Archaeology Crepeele locale Graham site DiMe-30 Graham site 2004

## Documents

ARCH 1.1 Crepeele Locale  
1.4 Graham Site 2004-20  
1.4.1 Graham 2004  
1.4.1.1 Summary Information  
Core Unit: Thomas Playford, Core Wayne Kishner and Andrew Richards  
Graham Site 1.4.1.1  
Excavation Unit: Catalogue Coordinates  
Site 1.4.1.1  
Excavation: Thomas Playford & Wayne Kishner & Andrew Richards  
The units 1 and 1.1 were excavated with the Crepeele site in 2004 and were re-excavated in the Graham site 2004-20 keeping the same unit numbers.

1.4.1.1\_Graham04\_Summary.pdf

Read PDF

Download PDF



## Graham site 2004 - field journals

<http://archives.brandonu.ca/en/permalink/descriptions11890>

Part Of: RG 7 Beverley Nicholson fonds  
Description Level: sub sub sub series  
Series Number: 1.4.1.2  
Accession Number: 1-2010  
GMD: multiple media  
Date Range: 2004  
Material Details: Field journals have been scanned in multi-page PDF files.

### History /

#### Biographical:

Graham units 9 and 14 were excavated with the Crepeele site in 2004 and were reassigned to the Graham site DiMe-30 keeping the same unit numbers.

Field journals from 2004 contain notes concerning the Graham, Sarah and Atkinson sites. The relevant page numbers are noted.

#### Scope and Content:

Record of daily observations at the site including: excavation methods, items recovered, features, local environment and weather.

Name Access: Graham site 2004 - field journals  
Subject Access: Archaeology  
Crepeele locale  
Graham site DiMe-30  
Graham site 2004



## Graham site 2005

<http://archives.brandonu.ca/en/permalink/descriptions11904>

Part Of: RG 7 Beverley Nicholson fonds  
Description Level: Sub sub series  
Series Number: 1.4.2  
Accession Number: 1-2010  
GMD: multiple media  
Date Range: 2005  
Material Details: Field journals have been scanned in multi-page PDF files. Artifact catalogues are PDF files in spreadsheet format. Photographs are in jpeg format.

### History /

#### Biographical:

The Graham site is located south of the Crepeele site. Due to the close proximity the Graham and Crepeele sites have both been the site of the Brandon University Archaeological Field School.

In 2005 both sites were excavated as part of the Field School experience instructed by Denise Ens with teaching assistant James Graham Six units (XU 1-6) were excavated at the Graham site.

Recoveries included faunal (mostly bison), lithics (points, scrapers), and ceramics.

The Graham site was initially designated as a separate site early in the testing of the Crepeele locale due to what appeared to be a distinction between Early and Late Woodland ceramics. Subsequent testing has shown that this distinction was premature and that the cultural mosaic represented in the western section of the Crepeele locale does not readily separate in this manner.

#### Scope and Content:

Sub-sub-sub series contains: Summary information of field methodology, number and coordinates of excavations, personnel and their staff position; Field journals are daily records of recoveries, features and activities at the site; Site records include excavation level and unit summaries, feature sheets, profiles; sample records and maps; Artifact catalogues are lists and identifications of all artifacts recovered; Photographs are of excavation units, features, the landscape and personnel.

Name Access: Graham site 2005  
Subject Access: Archaeology  
Crepeele locale  
Graham site DiMe-30  
Graham site 2005

## Graham site 2005 - summary information

<http://archives.brandonu.ca/en/permalink/descriptions11905>

Part Of: RG 7 Beverley Nicholson fonds  
Description Level: sub sub sub series  
Series Number: 1.4.2.1



Accession Number: 1-2010  
GMD: multiple media  
Date Range: 2005  
Material Details: Field journals have been scanned in multi-page PDF files. Artifact catalogues are PDF files in spreadsheet format. Photographs are in jpeg format.

History /  
Biographical:

The Graham site is located south of the Crepeele site. Due to the close proximity the Graham and Crepeele sites have both been the site of the Brandon University Archaeological Field School.

In 2005 both sites were excavated as part of the Field School experience instructed by Denise Ens with teaching assistant James Graham Six units (XU 1-6) were excavated at the Graham site.

Recoveries included faunal (mostly bison), lithics (points, scrapers), and ceramics.

Scope and Content:

Sub-sub-sub series contains: Summary information of field methodology, number and co-ordinates of excavations, personnel and their staff position.

Name Access: Graham site 2005 - summary information

Subject Access: Archaeology  
Crepeele locale  
Graham site DiMe-30  
Graham site 2005

## Documents

ABOCH 1.1 Crepeele Locale  
1.1.1 Graham Site 2005 - 2005  
1.1.2 Graham Site 2005  
1.1.3 Summary Information

Field School - Instructor Denise Ens, Assistant James Graham

Excavation Unit	Coordinate Coordinates	Excavator
XU 1	5450751N	Michael Deneault
XU 2	5450751N	Michael Deneault
XU 3	5450751N	Michael Deneault
XU 4	5450751N	Michael Deneault
XU 5	5450751N	Michael Deneault
XU 6	5450751N	Michael Deneault

1.4.2.1\_Graham05\_Summary.pdf

Read PDF

Download PDF



## Graham site 2005 - field journals

<http://archives.brandonu.ca/en/permalink/descriptions11906>

Part Of: RG 7 Beverley Nicholson fonds  
Description Level: sub sub sub series  
Series Number: 1.4.2.2  
Accession Number: 1-2010  
GMD: multiple media  
Date Range: 2005  
Material Details: Field journals have been scanned in multi-page PDF files.

### History /

#### Biographical:

The Graham site is located south of the Crepeele site. Due to the close proximity the Graham and Crepeele sites have both been the site of the Brandon University Archaeological Field School.

In 2005 both sites were excavated as part of the Field School experience instructed by Denise Ens with teaching assistant James Graham. Six units (XU 1-6) were excavated at the Graham site.

Field journals from 2005 contain notes concerning the Graham and Crepeele sites.

#### Scope and Content:

Record of daily observations at the site including: excavation methods, items recovered, features, local environment and weather.

Name Access: Graham site 2005 - field journals  
Subject Access: Archaeology  
Crepeele locale  
Graham site DiMe-30  
Graham site 2005





## Graham site 2006

<http://archives.brandonu.ca/en/permalink/descriptions11922>

Part Of: RG 7 Beverley Nicholson fonds  
Description Level: Sub sub series  
Series Number: 1.4.3  
Accession Number: 1-2010  
GMD: multiple media  
Date Range: 2006  
Material Details: Field journals have been scanned in multi-page PDF files. Artifact catalogues are PDF files in spreadsheet format. Photographs are in jpeg format.

### History /

#### Biographical:

The Graham site is located south of the Crepeele site. Due to the close proximity the Graham and Crepeele sites have both been the site of the Brandon University Archaeological Field School.

In 2006 a small Brandon University Archaeology Field School was conducted at the Graham site. Four excavations (XU 7, 8 15 & 16) were completed with Denise Ens Instructor and Jessica MacKenzie Teaching Assistant.

Recoveries included faunal (mostly bison), lithics and ceramics

The Graham site was initially designated as a separate site early in the testing of the Crepeele locale due to what appeared to be a distinction between Early and Late Woodland ceramics. Subsequent testing has shown that this distinction was premature and that the cultural mosaic represented in the western section of the Crepeele locale does not readily separate in this manner.

#### Scope and Content:

Sub-sub-sub series contains: Summary information of field methodology, number and co-ordinates of excavations, personnel and their staff position; Field journals are daily records of recoveries, features and activities at the site; Site records include excavation level and unit summaries, feature sheets, profiles; sample records and maps; Artifact catalogues are lists and identifications of all artifacts recovered; Photographs are of excavation units, features, the landscape and personnel.

Name Access: Graham site 2006  
Subject Access: Archaeology  
Crepeele locale  
Graham site DiMe-30  
Graham site 2006

## Graham site 2006 - summary information

<http://archives.brandonu.ca/en/permalink/descriptions11923>

Part Of: RG 7 Beverley Nicholson fonds  
Description Level: sub sub sub series  
Series Number: 1.4.3.1  
Accession Number: 1-2010



GMD: multiple media

Date Range: 2006

Material Details: Field journals have been scanned in multi-page PDF files. Artifact catalogues are PDF files in spreadsheet format. Photographs are in jpeg format.

History /

Biographical:

The Graham site is located south of the Crepeele site. Due to the close proximity the Graham and Crepeele sites have both been the site of the Brandon University Archaeological Field School.

In 2006 a small Brandon University Archaeology Field School was conducted at the Graham site. Four excavations (XU 7, 8 15 & 16) were completed with Denise Ens Instructor and Jessica MacKenzie Teaching Assistant.

Recoveries included faunal (mostly bison), lithics and ceramics Recoveries included faunal (mostly bison), lithics (points, scrapers), and ceramics.

Scope and Content:


Sub-sub-sub series contains: Summary information of field methodology, number and co-ordinates of excavations, personnel and their staff position.


Name Access: Graham site 2006 - summary information

Subject Access: Archaeology  
Crepeele locale  
Graham site DiMe-30  
Graham site 2006

## Documents

1.4.3.1\_  
Graham06\_Summary.p  
df

 Read PDF

 Download PDF



## Graham site 2006 - field journals

<http://archives.brandonu.ca/en/permalink/descriptions11924>

Part Of: RG 7 Beverley Nicholson fonds  
Description Level: sub sub sub series  
Series Number: 1.4.3.2  
Accession Number: 1-2010  
GMD: multiple media  
Date Range: 2006  
Material Details: Field journals have been scanned in multi-page PDF files.  
History /  
Biographical:

In 2006 a small Brandon University Archaeology Field School was conducted at the Graham site. Four excavations (XU 7, 8 15 & 16) were completed with Denise Ens Instructor and Jessica MacKenzie Teaching Assistant.

Field journals from 2006 contain notes concerning the Graham and Crepeele sites.

### Scope and Content:

Record of daily observations at the site including: excavation methods, items recovered, features, local environment and weather.

Name Access: Graham site 2006 - field journals  
Subject Access: Archaeology  
Crepeele locale  
Graham site DiMe-30  
Graham site 2006



## Graham site 2008 - summary information

<http://archives.brandonu.ca/en/permalink/descriptions11951>

Part Of: RG 7 Beverley Nicholson fonds  
Description Level: sub sub sub series  
Series Number: 1.4.4.1  
Accession Number: 1-2010  
GMD: multiple media  
Date Range: 2008  
Material Details: Field journals have been scanned in multi-page PDF files. Artifact catalogues are PDF files in spreadsheet format. Photographs are in jpeg format.

History /

Biographical:

In 2008 Brandon University Archaeology returned to the Crepeelee locale to conduct further testing at the Graham and Crepeelee sites. Four units (XU 47-49 & 53) were excavated at Graham 2008 in order to collect samples and add further data to previous excavations. The usual excavation methology was employed.

The small crew was directed by Bev Nicholson with Crew of Bill Foy, Andrew Lints & Kim Harrison

Recoveries included faunal (mostly bison), lithics and ceramics.

Scope and Content:

Sub-sub-sub series contains: Summary information of field methology, number and co-ordinates of excavations, personnel and their staff position.

- Name Access:
- Graham site 2008 - summary information
- Subject Access:
- Archaeology
- Crepeelee locale
- Graham site DiMe-30
- Graham site 2008

Documents

ABCH 1.1 Crepeelee Locale

1.4 Graham Site 2008 - 207

1.4.4 Graham 2008


1.4.4.1 Summary Information


Director: Bev Nicholson with Crew of Bill Foy, Andrew Lints & Kim Harrison

Excavation Unit	Coordinates	Excavator
XU 47	472524N	Bill Foy
XU 48	472524N	Andrew Lints & Bev Nicholson
XU 49	472524N	Andrew Lints & Bev Nicholson
XU 53	494024W	Bill Foy

Four units were excavated at Graham 2008 in order to collect samples and add further data to previous excavations. The usual excavation methology was employed.

1.4.4.1\_Graham08\_Summary.pdf

 Read PDF

 Download PDF