

S. J. McKee Archives



Casselman survey - summary information

<http://archives.brandonu.ca/en/permalink/descriptions11724>

Part Of:	RG 7 Beverley Nicholson fonds
Description Level:	Sub sub series
Series Number:	1.1.1
GMD:	multiple media
Date Range:	2003
Material Details:	Field journals have been scanned in multi-page PDF files. Artifact catalogues are PDF files in spreadsheet format. Photographs are in jpeg format.

History /

Biographical:

Archaeological testing began in the Crepeelee locale in May 2003 with a field crew of four members. James Graham supervised the crew and was assisted by Sarah Graham, Jollana Bishop, and Lisa Sonnenburg. Later additions to the testing team were Todd Kristensen, Michael Evans, and Emily Ansell.

The methodology for this survey used an arbitrary datum and a transit to establish a grid of 30 m intervals and a shovel test every 20 m. Materials were removed and screened to a minimum depth of 50 cm below surface. All recovered materials were bagged and removed to the lab for further analysis. All information including: test pit grid co-ordinates; UTM co-ordinates for each test pit; artifact presence; excavator; vegetation; aspect; paleosol; paleosol depth; and notes, were entered into a GIS database.

Approximately 600 shovel test pits were excavated and recorded in this fashion. Of the 600 shovel test pits, over 300 contained cultural materials. Based on the results of the Casselman survey several areas were designed for further testing and excavation. Crepeelee West and Crepeelee East were renamed the Sarah site DiMe-28) and Crepeelee 3 which became the Crepeelee site DiMe- 29.

Scope and Content:

Sub-sub-sub series contains: Summary information of field methodology, number and co-ordinates of excavations, personnel and their staff position; Field journals are daily records of recoveries, features and activities at the site; Site records include excavation level and unit summaries, feature sheets, profiles; sample records and maps; Artifact catalogues are lists and identifications of all artifacts recovered; Photographs are of excavation units, features, the landscape and personnel.

Name Access:	Casselman survey - summary information
Subject Access:	Archaeology Crepeelee locale Casselman survey Casselman survey - summary information



Crepeelee site 2004

<http://archives.brandonu.ca/en/permalink/descriptions11725>

Part Of: RG 7 Beverley Nicholson fonds
Description Level: Sub sub series
Series Number: 1.2.2
Accession Number: 1-2010
GMD: multiple media
Date Range: 2004
Material Details: Field journals have been scanned in multi-page PDF files. Artifact catalogues are PDF files in spreadsheet format. Photographs are in jpeg format.

History /

Biographical:

The Crepeelee site was identified from the results of the Casselman survey and excavated in 2003. In 2004 the site was funded through the SCAPE project, directed by Bev Nicholson. The units were excavated by Crew Chief Tomasin Playford and crew.

Eight units were excavated in 2004, XU 1 to XU 8

The artifacts recovered from these eight excavations are faunal (animal bone), mainly bison, lithic materials (stone tools and flakes) and some ceramic (pottery). The artifact catalogue has 1258 records.

Scope and Content:

Sub-sub-sub series contains: Summary information of field methodology, number and co-ordinates of excavations, personnel and their staff position; Field journals are daily records of recoveries, features and activities at the site; Site records include excavation level and unit summaries, feature sheets, profiles; sample records and maps; Artifact catalogues are lists and identifications of all artifacts recovered; Photographs are of excavation units, features, the landscape and personnel.

Name Access: Crepeelee site 2004
Subject Access: Archaeology
Crepeelee locale
Crepeelee site DiMe-29
Crepeelee site 2004



Crepeelee site 2004 - summary information

<http://archives.brandonu.ca/en/permalink/descriptions11726>

Part Of: RG 7 Beverley Nicholson fonds

Description Level: sub sub sub series

Series Number: 1.2.2.1

Accession Number: 1-2010

GMD: multiple media

Date Range: 2004

Material Details: Field journals have been scanned in multi-page PDF files. Artifact catalogues are PDF files in spreadsheet format. Photographs are in jpeg format.

History /

Biographical:

The Crepeelee site was identified from the results of the Casselman survey and excavated in 2003. Further units 1 to 8 were excavated in 2004. Funding was through the SCAPE project, directed by Dr. Bev Nicholson. The site was excavated by Crew Chief Tomasin Playford and crew.

Scope and Content:

Sub-sub-sub series contains: Summary information of field methodology, number and co-ordinates of excavations, personnel and their staff position.

Name Access: Crepeelee site 2004 - summary information

Subject Access: Archaeology
Crepeelee locale
Crepeelee site DiMe-29
Crepeelee site 2004

Documents

ARCH 1.1 Crepeele Locale
1.2 Crepeele Site DiMe-29
1.2.2 Crepeele 2004
1.2.2.1 Summary Information

Crew Chief: Tomasin Playford with Crew of: Andrew Richards, Sarah Gordon, Sherry Lefebvre, Eric Cross

Excavation Unit	Coordinates	Excavator
Unit 1	4504N 73W	Andrew Richards
Unit 2	4504N 73W	Sarah Gordon
Unit 3	4504N 73W	Tomasin Playford
Unit 4	4504N 73W	Sherry Lefebvre
Unit 5	4504N 73W	Andrew Richards
Unit 6	4504N 73W	Eric Cross
Unit 7	4504N 73W	Tomasin Playford
Unit 8	4504N 73W	Sherry Lefebvre
Unit 9	4504N 73W	Tomasin Playford
Unit 10	4504N 73W	Sherry Lefebvre

After excavation the units 1 and 2 were consolidated together from the Crepeele site and were re-named the Gordon site (DiMe-29). The units 3, 4, 5, 6, 7, 8, 9 and 10 were re-named the Lefebvre site (DiMe-30).

1.2.2.1_C04_Summary.pdf

Read PDF

Download PDF



Crepeelee site 2005 - field journals

<http://archives.brandonu.ca/en/permalink/descriptions11727>

Part Of: RG 7 Beverley Nicholson fonds
Description Level: sub sub sub series
Series Number: 1.2.3.2
Accession Number: 1-2010
GMD: multiple media
Date Range: 2005
Material Details: Field journals have been scanned in multi-page PDF files.

History /

Biographical:

In 2005 the Brandon University Field School was held at both the Crepeelee and Graham sites in the Crepeelee locale.

At the Crepeelee site nine units were excavated (XU10-16 & 20, 21). Units 20 & 21 were referred to as Meadow in the notes but are considered part of the larger site based on recoveries.

Denise Ens instructed the school and James Graham was teaching assistant. Field journals were kept by both instructors.

Scope and Content:

Record of daily observations at the site including: excavation methods, items recovered, features, local environment and weather.

Name Access: Crepeelee site 2005 - field journals
Subject Access: Archaeology
Crepeelee locale
Crepeelee site DiMe-29
Crepeelee site 2005



Crepeelee site 2004 - site records

<http://archives.brandonu.ca/en/permalink/descriptions11728>

Part Of: RG 7 Beverley Nicholson fonds
Description Level: sub sub sub series
Series Number: 1.2.2.3
Accession Number: 1-2010
GMD: multiple media
Date Range: 2004
Material Details: Site records have been scanned in multi-page PDF files.

History /

Biographical:

The Crepeelee site was identified from the results of the Casselman survey and excavated in 2003. In 2004 the site was funded through the SCAPE project, directed by Bev Nicholson. The units were excavated by Crew Chief Tomasin Playford and crew.

Eight units were excavated in 2004, XU 1 to XU 8. Each unit has a separate pdf file.

Scope and Content:

Site records of excavation units may include: level summaries, floor plans, feature sheets, wall profiles, unit summaries and any other additional information relating to the unit.

Name Access: Crepeelee site 2004 - site records
Subject Access: Archaeology
Crepeelee locale
Crepeelee site DiMe-29
Crepeelee site 2004



Crepeelee site 2005

<http://archives.brandonu.ca/en/permalink/descriptions11748>

Part Of: RG 7 Beverley Nicholson fonds
Description Level: Sub sub series
Series Number: 1.2.3
Accession Number: 1-2010
GMD: multiple media
Date Range: 2005
Material Details: Field journals have been scanned in multi-page PDF files. Artifact catalogues are PDF files in spreadsheet format. Photographs are in jpeg format.

History /

Biographical:

The Crepeelee site was identified from the results of the Casselman survey and excavated in 2003 and 2004.

In 2005 the Brandon University Field School was held at both the Crepeelee and Graham sites in the Crepeelee locale. Denise Ens instructed the school and James Graham was teaching assistant.

At the Crepeelee site nine units were excavated (XU10-16 & 20, 21). Units 20 & 21 were referred to as Meadow in the notes but is considered part of the larger site based on recoveries. There are over 1,570 records in the catalogue. Faunal (animal bone), lithics, fire cracked rock, diagnostic lithics and ceramics were recovered from the site

The weather conditions during the field school were particularly difficult due to the rainfall and flooding of the roads and sites.

Scope and Content:

Sub-sub-sub series contains: Summary information of field methodology, number and co-ordinates of excavations, personnel and their staff position; Field journals are daily records of recoveries, features and activities at the site; Site records include excavation level and unit summaries, feature sheets, profiles; sample records and maps; Artifact catalogues are lists and identifications of all artifacts recovered; Photographs are of excavation units, features, the landscape and personnel.

Name Access: Crepeelee site 2005
Subject Access: Archaeology
Crepeelee locale
Crepeelee site DiMe-29
Crepeelee site 2005

Crepeelee site 2005 - summary information

<http://archives.brandonu.ca/en/permalink/descriptions11749>

Part Of: RG 7 Beverley Nicholson fonds
Description Level: sub sub sub series
Series Number: 1.2.3.1
Accession Number: 1-2010



GMD: multiple media

Date Range: 2005

Material Details: Field journals have been scanned in multi-page PDF files. Artifact catalogues are PDF files in spreadsheet format. Photographs are in jpeg format.

History / Biographical:

In 2005 the Brandon University Field School was held at both the Crepelee and Graham sites in the Crepelee locale. Denise Ens instructed the school and James Graham was teaching assistant.

Nine units were excavated (XU10-16 & 20, 21). Units 20 & 21 were referred to as Meadow in the notes but are considered part of the larger site based on recoveries

Faunal (animal bone), lithics, fire cracked rock, diagnostic lithics and ceramics were recovered from the site.

Scope and Content:


Sub-sub-sub series contains: Summary information of field methodology, number and co-ordinates of excavations, personnel and their staff position.


Name Access: Crepelee site 2005 - summary information

Subject Access: Archaeology
Crepelee locale
Crepelee site DiMe-29
Crepelee site 2005

Documents

1.2.3.1_C05_summary.pdf

 Read PDF

 Download PDF



Crepeelee site 2005 - site records

<http://archives.brandonu.ca/en/permalink/descriptions11752>

Part Of: RG 7 Beverley Nicholson fonds
Description Level: sub sub sub series
Series Number: 1.2.3.3
Accession Number: 1-2010
GMD: multiple media
Date Range: 2005
Material Details: Site records have been scanned in multi-page PDF files.

History /

Biographical:

In 2005 the Brandon University Field School was held at both the Crepeelee and Graham sites in the Crepeelee locale.

Denise Ens instructed the school and James Graham was teaching assistant.

At the Crepeelee site nine units were excavated (XU10-16 & 20, 21). Units 20 & 21 were referred to as Meadow in the notes but are considered part of the larger site based on recoveries

Scope and Content:

Site records of excavation units may include: level summaries, floor plans, feature sheets, wall profiles, unit summaries and any other additional information relating to the unit.

Name Access: Crepeelee site 2005 - site records
Subject Access: Archaeology
Crepeelee locale
Crepeelee site DiMe-29
Crepeelee site 2005



Crepeelee site 2007

<http://archives.brandonu.ca/en/permalink/descriptions11772>

Part Of: RG 7 Beverley Nicholson fonds
Description Level: Sub sub series
Series Number: 1.2.4
Accession Number: 1-2010
GMD: multiple media
Date Range: 2007
Material Details: Field journals have been scanned in multi-page PDF files. Artifact catalogues are PDF files in spreadsheet format. Photographs are in jpeg format.

History /

Biographical:

The Crepeelee site was identified from the results of the Casselman survey and excavated in 2003, 2004 and 2005.

In 2007 the Brandon University Archaeology Field School was held at the Crepeelee site in the Crepeelee locale. Denise Ens instructed the school with Kate Decter & Jessica MacKenzie assistants.

Seventeen units were excavated XU30 - 46. Faunal (animal bone), lithics, fire cracked rock, diagnostic lithics and ceramics were recovered from the site. There are over 3050 records in the catalogue.

Scope and Content:

Sub-sub-sub series contains: Summary information of field methodology, number and co-ordinates of excavations, personnel and their staff position; Field journals are daily records of recoveries, features and activities at the site; Site records include excavation level and unit summaries, feature sheets, profiles; sample records and maps; Artifact catalogues are lists and identifications of all artifacts recovered; Photographs are of excavation units, features, the landscape and personnel.

Name Access: Crepeelee site 2007
Subject Access: Archaeology
Crepeelee locale
Crepeelee site DiMe-29
Crepeelee site 2007



Crepeelee site 2008 - summary information

<http://archives.brandonu.ca/en/permalink/descriptions11773>

Part Of: RG 7 Beverley Nicholson fonds
Description Level: sub sub sub series
Series Number: 1.2.5.1
Accession Number: 1-2010
GMD: multiple media
Date Range: 2008

Material Details: Field journals have been scanned in multi-page PDF files. Artifact catalogues are PDF files in spreadsheet format. Photographs are in jpeg format.

History /

Biographical:

The Crepeele site was identified from the results of the Casselman survey and excavated in 2003, 2004, 2005 and 2007.

In 2005 and 2007 the Brandon University Archaeology Field School was held at the Crepeele site in the Crepeele locale.

In 2008 a small crew returned to the site to gather further samples and verify profiles. Three units (XU 50, 51 and 52) were excavated with faunal (animal bone), lithics, fire cracked rock, diagnostic lithics and ceramics recovered from the site. There are 455 records in the artifact catalogue.

Scope and Content:

Sub-sub-sub series contains: Summary information of field methodology, number and co-ordinates of excavations, personnel and their staff position.

Name Access: Crepeele site 2008 - summary information

Subject Access: Archaeology
Crepeele locale
Crepeele site DiMe-29
Crepeele site 2008


Documents


ABC 10.1 Crepeele Locale
1.2.1 Crepeele Site DiMe-29
1.2.2 Crepeele 2008
1.2.2.1 Summary Information

Excavator: Ben Nicholson with Crew of Bill Fay, Andrew Lums & Kim Thornton	
Excavation Unit	Excavation Coordinates
XU 50	5110N 75W
XU 51	5110N 75W
XU 52	5110N 75W

Gridlines 100m x 100m, units 17-41 & 51 were also excavated in 2008

1.2.5.1_C08_summary.pdf

 Read PDF

 Download PDF



Crepeele site 2007 - field journals

<http://archives.brandonu.ca/en/permalink/descriptions11774>

Part Of: RG 7 Beverley Nicholson fonds
Description Level: sub sub sub series
Series Number: 1.2.4.2
Accession Number: 1-2010
GMD: multiple media
Date Range: 2007
Material Details: Field journals have been scanned in multi-page PDF files.

History /

Biographical:

In 2007 the Brandon University Archaeology Field School was held at the Crepeele site in the Crepeele locale. Denise Ens instructed the school with Kate Decter & Jessica MacKenzie assistants.

Seventeen units were excavated XU30 - 46. Faunal (animal bone), lithics, fire cracked rock, diagnostic lithics and ceramics were recovered from the site. There are over 3050 records in the catalogue.

Scope and Content:

Record of daily observations at the site including: excavation methods, items recovered, features, local environment and weather.

Name Access: Crepeele site 2007 - field journals
Subject Access: Archaeology
Crepeele locale
Crepeele site DiMe-29
Crepeele site 2007



Lovstrom Block B - summary

<http://archives.brandonu.ca/en/permalink/descriptions12479>

Part Of: RG 7 Beverley Nicholson fonds
Description Level: Sub-series
Series Number: 3.3
Accession Number: 1-2010
GMD: multiple media
Date Range: 1987

History /

Biographical:

Block B consisted of 20 contiguous 1m² units excavated to 30 cm below surface. (except unit 58 which was excavated to 35 cm bs to obtain extended soil profile). The block is situated in recent oak and poplar forest at the head of a ravine leading to Jock's Creek, adjacent to an area cleared for market gardening. As was the case with Block A, the understory is heavily overgrown with hazelnut, chokecherry, saskatoon, and a poison ivy/sarsaparilla ground cover.

The soil levels below the sod in Block B consisted of a black, silty, and gritty loam layer from 5 cm to 23 cm below surface, a yellow and sandy clay from 23 cm to 30 cm below surface, and glacial till at 30 cm below surface. As in Block A, limestone cobbles were found throughout the occupation level around the bone. It is evident that bioturbation – primarily tree roots and rodent burrowing – have significantly altered patterns of original deposition of lithics, ceramics and small bone.

The faunal layer lay close to the surface, situated entirely in the black loam 5 cm – 23 cm below surface. The 23 cm depth also marked the end of the dark silty loam. At 10 cm below surface, a discernible patterning of the bone appeared. Concentrations of bone in narrow rows ran in an irregular pattern from the northwest to the southeast part of the block. This pattern was most apparent in the north end of the block which is the highest point in the block. In the same 1m² unit, patches of weathered, very poorly preserved bone would be found lying close to patches of well preserved bone. It is believed that this variability in preservation results from uneven rates of burial due to taphic activities of pocket gophers or other agents of bioturbation. The same pattern of uneven preservation occurs over much of the locale but is most evident in Block B.

Diagnostic lithics included eleven projectile points that were predominantly Plains or Prairie Side-notch types, but included two unnotched triangular points. Cord-wrapped impressed rim sherds and body sherds were recovered. The ceramics are variants of the Woodland Blackduck horizon.

RC dates: XU49 – 675/80 BP XU 59 – 705/75BP.

Scope and Content:

Sub-sub-sub series contains: Summary information of field methodology, number and co-ordinates of excavations, personnel and their staff position; Field journals are daily records of recoveries, features and activities at the site; Site records include excavation level and unit summaries, feature sheets, profiles; sample records and maps; Artifact catalogues are lists and identifications of all artifacts recovered; Photographs are of excavation units, features, the landscape and personnel.

Name Access: Lovstrom Block B - summary

Subject Access: Archaeology
Lovstrom locale
Lovstrom Block B



Lovstrom Block B - site co-ordinates

<http://archives.brandonu.ca/en/permalink/descriptions12480>

Part Of: RG 7 Beverley Nicholson fonds

Description Level: sub sub sub series

Series Number: 3.3.1.1

Accession Number: 1-2010

GMD: multiple media

Date Range: 1987

Material Details: Field journals have been scanned in multi-page PDF files. Artifact catalogues are PDF files in spreadsheet format. Photographs are in jpeg format.

History /

Biographical:

Large scale excavations of five block sites took place in 1987 under the direction of Bev Nicholson with Jane Gibson as crew chief. Block B consisted of 21 excavation units.

Scope and Content:

Sub-sub-sub series contains: Summary information of field methodology, number and co-ordinates of excavations, personnel and their staff position.

Name Access: Lovstrom Block B - site co-ordinates

Subject Access: Archaeology

Lovstrom locale

Lovstrom Block B

Documents

ABC W & L Lovstrom Locale 1987

3.3.1 Lovstrom Block B

3.3.1.1 Summary Information

A large scale excavation of five block sites took place in 1987 under the direction of Bev Nicholson with Jane Gibson as crew chief. Block B consisted of 21 excavation units.

Block B consisted of 21 excavation units located near T1-4 at (Original Coordinates 20004000 of original coordinates 20004000).

The actual dates were established as 1987, a subsequent date with the co-ordinates of 20004000 was used to facilitate computer cataloging.

Excavation	Original Co-ords	Catalogue Co-ords	Crew
101-01	20004000	20004000	Bev Nicholson
101-02	20004000	20004000	Bev Nicholson
101-03	20004000	20004000	Bev Nicholson
101-04	20004000	20004000	Bev Nicholson
101-05	20004000	20004000	Bev Nicholson
101-06	20004000	20004000	Bev Nicholson
101-07	20004000	20004000	Bev Nicholson
101-08	20004000	20004000	Bev Nicholson
101-09	20004000	20004000	Bev Nicholson
101-10	20004000	20004000	Bev Nicholson
101-11	20004000	20004000	Bev Nicholson
101-12	20004000	20004000	Bev Nicholson
101-13	20004000	20004000	Bev Nicholson
101-14	20004000	20004000	Bev Nicholson
101-15	20004000	20004000	Bev Nicholson
101-16	20004000	20004000	Bev Nicholson
101-17	20004000	20004000	Bev Nicholson
101-18	20004000	20004000	Bev Nicholson
101-19	20004000	20004000	Bev Nicholson
101-20	20004000	20004000	Bev Nicholson
101-21	20004000	20004000	Bev Nicholson
101-22	20004000	20004000	Bev Nicholson
101-23	20004000	20004000	Bev Nicholson
101-24	20004000	20004000	Bev Nicholson
101-25	20004000	20004000	Bev Nicholson

3.3.1.1_Sum.pdf

Read PDF

Download PDF



Lovstrom Block B - Bev Nicholson field journal

<http://archives.brandonu.ca/en/permalink/descriptions12481>

Part Of:	RG 7 Beverley Nicholson fonds
Description Level:	File
Series Number:	3.3.1.2
File Number:	1
Accession Number:	1-2010
GMD:	multiple media
Date Range:	1987
Physical Description:	8 pages
Material Details:	Field journals have been scanned in multi-page PDF files.

History /

Biographical:

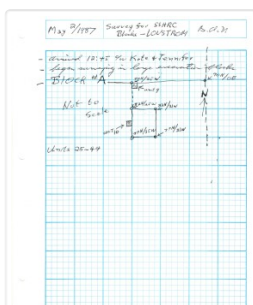
Bev Nicholson was director of the project and his field journal relates to all the Blocks excavated at the locale.

Scope and Content:

Record of daily observations at the site including: excavation methods, items recovered, features, local environment and weather.

Name Access:	Lovstrom Block B - Bev Nicholson field journal
Subject Access:	Archaeology
	Lovstrom locale
	Lovstrom Block B
	Lovstrom Block B - Bev Nicholson field journal

Documents



3.3.1.2.1_Nicholson.pdf

 Read PDF

 Download PDF



Lovstrom Block C - summary

<http://archives.brandonu.ca/en/permalink/descriptions12517>

Part Of: RG 7 Beverley Nicholson fonds

Description Level: Sub-series

Series Number: 3.4

Accession Number: 1-2010

GMD: multiple media

Date Range: 1987

History /

Biographical:

Block C was situated in sparse oak forest with an understory of saskatoon, hazelnut and a thick ground cover of poison ivy and sarsaparilla. The block measured 3m and 3m and contained nine excavation units. All units were excavated to 35cm below surface. The soil horizons were much like the other blocks, except for a rusty brown stain in the first level, giving the upper black loam a mottled appearance. The brown patches were clay mixed with loam and were harder than the surrounding matrix. No definitive interpretation of these phenomena was attempted but this effect may be the result of natural brush or forest fires. Under the 5cm so d/humus (Ah) layer, the loam horizon extended approximately 5cm – 25 cm below surface, and averaged 20 cm thick. Bone was concentrated within this horizon between 10 cm – 20 cm below surface.

Block C was notable for its concentrations of articulated bison bone. Most noteworthy was an articulated unit composed of lumbar vertebrae, pelvis, and sacrum. Several thoracic vertebra/proximal rib end concentrations were also recovered. There were more vertebrae and rib sections recovered in the units in proportion to other bones. A few sherds, some debitage and a single Prairie Side-Notched point fragment were among the recoveries. Based on the quantity of bone, the density of the bone layer, and the articulated butchering units the area has been interpreted as a bone midden.

Faunal material was analysed by Jessica MacKenzie for her Honours Thesis: "A reconstruction of butchering processes in Block C from the Lovstrom site DjLx-1 in Southwestern Manitoba."

Radiocarbon date: 850/115BP XU 79.

Scope and Content:

Sub-sub-sub series contains: Summary information of field methodology, number and co-ordinates of excavations, personnel and their staff position; Field journals are daily records of recoveries, features and activities at the site; Site records include excavation level and unit summaries, feature sheets, profiles; sample records and maps; Artifact catalogues are lists and identifications of all artifacts recovered; Photographs are of excavation units, features, the landscape and personnel.

Name Access: Lovstrom Block C - summary

Subject Access: Archaeology
Lovstrom locale
Lovstrom Block C



Lovstrom Block C - site co-ordinates

<http://archives.brandonu.ca/en/permalink/descriptions12518>

Part Of: RG 7 Beverley Nicholson fonds

Description Level: sub sub sub series

Series Number: 3.4.1.1

Accession Number: 1-2010

GMD: multiple media

Date Range: 1987

Material Details: Field journals have been scanned in multi-page PDF files. Artifact catalogues are PDF files in spreadsheet format. Photographs are in jpeg format.

History /

Biographical:

Large scale excavations of five block sites took place in 1987 under the direction of Bev Nicholson with Jane Gibson as crew chief. Block C consisted of nine excavation units. Miggs Green was Block C assistant.

Scope and Content:


Sub-sub-sub series contains: Summary information of field methodology, number and co-ordinates of excavations, personnel and their staff position.


Name Access: Lovstrom Block C - site co-ordinates

Subject Access: Archaeology
Lovstrom locale
Lovstrom Block C

Documents

3.4.1.1_Sum.pdf

 Read PDF

 Download PDF



Graham site 2005

<http://archives.brandonu.ca/en/permalink/descriptions11904>

Part Of: RG 7 Beverley Nicholson fonds
Description Level: Sub sub series
Series Number: 1.4.2
Accession Number: 1-2010
GMD: multiple media
Date Range: 2005
Material Details: Field journals have been scanned in multi-page PDF files. Artifact catalogues are PDF files in spreadsheet format. Photographs are in jpeg format.

History /

Biographical:

The Graham site is located south of the Crepeele site. Due to the close proximity the Graham and Crepeele sites have both been the site of the Brandon University Archaeological Field School.

In 2005 both sites were excavated as part of the Field School experience instructed by Denise Ens with teaching assistant James Graham Six units (XU 1-6) were excavated at the Graham site.

Recoveries included faunal (mostly bison), lithics (points, scrapers), and ceramics.

The Graham site was initially designated as a separate site early in the testing of the Crepeele locale due to what appeared to be a distinction between Early and Late Woodland ceramics. Subsequent testing has shown that this distinction was premature and that the cultural mosaic represented in the western section of the Crepeele locale does not readily separate in this manner.

Scope and Content:

Sub-sub-sub series contains: Summary information of field methodology, number and co-ordinates of excavations, personnel and their staff position; Field journals are daily records of recoveries, features and activities at the site; Site records include excavation level and unit summaries, feature sheets, profiles; sample records and maps; Artifact catalogues are lists and identifications of all artifacts recovered; Photographs are of excavation units, features, the landscape and personnel.

Name Access: Graham site 2005
Subject Access: Archaeology
Crepeele locale
Graham site DiMe-30
Graham site 2005

Graham site 2005 - summary information

<http://archives.brandonu.ca/en/permalink/descriptions11905>

Part Of: RG 7 Beverley Nicholson fonds
Description Level: sub sub sub series
Series Number: 1.4.2.1



Accession Number: 1-2010
GMD: multiple media
Date Range: 2005
Material Details: Field journals have been scanned in multi-page PDF files. Artifact catalogues are PDF files in spreadsheet format. Photographs are in jpeg format.

History /
Biographical:

The Graham site is located south of the Crepeele site. Due to the close proximity the Graham and Crepeele sites have both been the site of the Brandon University Archaeological Field School.

In 2005 both sites were excavated as part of the Field School experience instructed by Denise Ens with teaching assistant James Graham Six units (XU 1-6) were excavated at the Graham site.

Recoveries included faunal (mostly bison), lithics (points, scrapers), and ceramics.

Scope and Content:

Sub-sub-sub series contains: Summary information of field methodology, number and co-ordinates of excavations, personnel and their staff position.

Name Access: Graham site 2005 - summary information

Subject Access: Archaeology
Crepeele locale
Graham site DiMe-30
Graham site 2005

Documents

ABOCH 1.1 Crepeele Locale
1.4.2 Graham Site 2005 - 2005
1.4.2.1 Graham 2005
1.4.2.2 Summary Information

Field School - Instructor Denise Ens, Assistant James Graham

Excavation Unit	Coordinate Coordinates	Excavator
XU 1	5450751N	Michael Deneault
XU 2	5450751N	Michael Deneault
XU 3	5450751N	Michael Deneault
XU 4	5450751N	James Graham
XU 5	5450751N	James Graham
XU 6	5450751N	James Graham

1.4.2.1_Graham05_Summary.pdf

Read PDF

Download PDF



Graham site 2005 - field journals

<http://archives.brandonu.ca/en/permalink/descriptions11906>

Part Of: RG 7 Beverley Nicholson fonds
Description Level: sub sub sub series
Series Number: 1.4.2.2
Accession Number: 1-2010
GMD: multiple media
Date Range: 2005
Material Details: Field journals have been scanned in multi-page PDF files.

History /

Biographical:

The Graham site is located south of the Crepeele site. Due to the close proximity the Graham and Crepeele sites have both been the site of the Brandon University Archaeological Field School.

In 2005 both sites were excavated as part of the Field School experience instructed by Denise Ens with teaching assistant James Graham. Six units (XU 1-6) were excavated at the Graham site.

Field journals from 2005 contain notes concerning the Graham and Crepeele sites.

Scope and Content:

Record of daily observations at the site including: excavation methods, items recovered, features, local environment and weather.

Name Access: Graham site 2005 - field journals
Subject Access: Archaeology
Crepeele locale
Graham site DiMe-30
Graham site 2005



Graham site 2006

<http://archives.brandonu.ca/en/permalink/descriptions11922>

Part Of: RG 7 Beverley Nicholson fonds
Description Level: Sub sub series
Series Number: 1.4.3
Accession Number: 1-2010
GMD: multiple media
Date Range: 2006
Material Details: Field journals have been scanned in multi-page PDF files. Artifact catalogues are PDF files in spreadsheet format. Photographs are in jpeg format.

History /

Biographical:

The Graham site is located south of the Crepeele site. Due to the close proximity the Graham and Crepeele sites have both been the site of the Brandon University Archaeological Field School.

In 2006 a small Brandon University Archaeology Field School was conducted at the Graham site. Four excavations (XU 7, 8 15 & 16) were completed with Denise Ens Instructor and Jessica MacKenzie Teaching Assistant.

Recoveries included faunal (mostly bison), lithics and ceramics

The Graham site was initially designated as a separate site early in the testing of the Crepeele locale due to what appeared to be a distinction between Early and Late Woodland ceramics. Subsequent testing has shown that this distinction was premature and that the cultural mosaic represented in the western section of the Crepeele locale does not readily separate in this manner.

Scope and Content:

Sub-sub-sub series contains: Summary information of field methodology, number and co-ordinates of excavations, personnel and their staff position; Field journals are daily records of recoveries, features and activities at the site; Site records include excavation level and unit summaries, feature sheets, profiles; sample records and maps; Artifact catalogues are lists and identifications of all artifacts recovered; Photographs are of excavation units, features, the landscape and personnel.

Name Access: Graham site 2006
Subject Access: Archaeology
Crepeele locale
Graham site DiMe-30
Graham site 2006