

# S. J. McKee Archives



## Site services building construction

<http://archives.brandonu.ca/en/permalink/descriptions14358>

Part Of: Brandon University Photograph Collection

Creator: Photographer: Tom Donkersloot

Description Level: Item

Series Number: 2.12

Item Number: BUPC 2.12.27

GMD: graphic

Date Range: May 4, 1971

Physical Description: 4.25" x 3.25" (b/w)

### History /

#### Biographical:

Donkersloot began working at Brandon University in 1970/1971 as the Clerk of Works. From 1973 until his retirement, he was the Director of Physical Plant.

The Site Services building was built in 1971.

#### Custodial History:

Photograph was taken by Tom Donkersloot during construction and stored in albums in the Physical Plant H-Hut until they were transferred to the McKee Archives by Doug Duncalf in May 2008.

#### Scope and Content:

Photograph shows construction of Brandon University's Site Services Building located on Louise Avenue at the corner of 20th Street. Also visible are McMaster Hall, Flora Cowan Women's Residence and the John R. Brodie Science Centre. Photograph is looking east/northeast from approximately 21st Street.

Notes: Donkersloot recorded the date and time each photograph was taken on the back of the photos.

## Images





## Site services building construction

<http://archives.brandonu.ca/en/permalink/descriptions14359>

Part Of: Brandon University Photograph Collection

Creator: Photographer: Tom Donkersloot

Description Level: Item

Series Number: 2.12

Item Number: BUPC 2.12.28

GMD: graphic

Date Range: May 4, 1971

Physical Description: 4.25" x 3.25" (b/w)

History /

Biographical:

Donkersloot began working at Brandon University in 1970/1971 as the Clerk of Works. From 1973 until his retirement, he was the Director of Physical Plant.

The Site Services Building was built in 1971.

Custodial History:

Photograph was taken by Tom Donkersloot during construction and stored in albums in the Physical Plant H-Hut until they were transferred to the McKee Archives by Doug Duncalf in May 2008.

Scope and Content:

Photograph shows construction of Brandon University's Site Services Building located on Louise Avenue at the corner of 20th Street. Also visible are McMaster Hall and part of Darrach Hall. Photograph is looking northeast.

Notes: Donkersloot recorded the date and time each photograph was taken on the back of the photos.

## Images

---





## Site services building construction

<http://archives.brandonu.ca/en/permalink/descriptions14360>

Part Of: Brandon University Photograph Collection

Creator: Photographer: Tom Donkersloot

Description Level: Item

Series Number: 2.12

Item Number: BUPC 2.12.29

GMD: graphic

Date Range: May 4, 1971

Physical Description: 4.25" x 3.25" (b/w)

History /

Biographical:

Donkersloot began working at Brandon University in 1970/1971 as the Clerk of Works. From 1973 until his retirement, he was the Director of Physical Plant.

The Site Services Building was built in 1971.

Custodial History:

Photograph was taken by Tom Donkersloot during construction and stored in albums in the Physical Plant H-Hut until they were transferred to the McKee Archives by Doug Duncalf in May 2008.

Scope and Content:

Photograph shows construction of Brandon University's Site Services Building located on Louise Avenue at the corner of 20th Street. Photograph is looking northwest.

Notes: Donkersloot recorded the date and time each photograph was taken on the back of the photos.

## Images

---





## New Physical Plant building exterior

<http://archives.brandonu.ca/en/permalink/descriptions14370>

Part Of: Brandon University Photograph Collection

Creator: Photographer: Samantha Stone

Description Level: Item

Series Number: 2.12

Item Number: BUPC 2.12.39

GMD: graphic

Date Range: Fall 2017

Physical Description: colour

Material Details: JPG & TIFF

History /

Biographical:

A \$3.9M, 13,600 square-foot physical plant was opened on 07 April 2010. Located south of the steam plant on 20th Street by Darrach Hall, the building replaced the old Physical Plant occupying the World War II H-Huts. The new building serves as the hub for many campus operations, providing services from security and technical support, to building maintenance, deliveries, grounds keeping, cleaning, and capital project management.

Custodial History:

Photograph is part of a series of campus images commissioned by the McKee Archives and Communications in the lead up to Brandon University's 50th Anniversary celebration.

Scope and Content:

Photograph shows the new Physical Plant building located on the west side of 20th Street, just north of Louise Avenue. The photograph is looking southwest and shows the exterior of the building, as well as part of the parking lot.

Storage Location: JPG on T drive; TIFF on external hard drive

### Images

---





## New Physical Plant building interior

<http://archives.brandonu.ca/en/permalink/descriptions14371>

Part Of: Brandon University Photograph Collection  
Creator: Photographer: Samantha Stone  
Description Level: Item  
Series Number: 2.12  
Item Number: BUPC 2.12.40  
GMD: graphic  
Date Range: Fall 2017  
Physical Description: colour  
Material Details: JPG & TIFF

### History /

#### Biographical:

A \$3.9M, 13,600 square-foot physical plant was opened on 07 April 2010. Located south of the steam plant on 20th Street by Darrach Hall, the building replaced the old Physical Plant occupying the World War II H-Huts. The new building serves as the hub for many campus operations, providing services from security and technical support, to building maintenance, deliveries, grounds keeping, cleaning, and capital project management.

#### Custodial History:

Photograph is part of a series of campus images commissioned by the McKee Archives and Communications in the lead up to Brandon University's 50th Anniversary celebration.

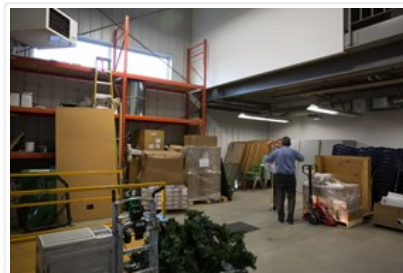
#### Scope and Content:

Photograph shows a storage/work space inside the new Physical Plant building located on the west side of 20th Street, just north of Louise Avenue. The man with his back to the camera is Al Puhach, Maintenance Supervisor. The man facing the camera is Gord Neal, Director of Physical Plant.

Storage Location: JPG on T drive; TIFF on external hard drive

## Images

---





## New Physical Plant building interior

<http://archives.brandonu.ca/en/permalink/descriptions14372>

Part Of: Brandon University Photograph Collection  
Creator: Photographer: Samantha Stone  
Description Level: Item  
Series Number: 2.12  
Item Number: BUPC 2.12.41  
GMD: graphic  
Date Range: Fall 2017  
Physical Description: colour  
Material Details: JPG & TIFF

### History /

#### Biographical:

A \$3.9M, 13,600 square-foot physical plant was opened on 07 April 2010. Located south of the steam plant on 20th Street by Darrach Hall, the building replaced the old Physical Plant occupying the World War II H-Huts. The new building serves as the hub for many campus operations, providing services from security and technical support, to building maintenance, deliveries, grounds keeping, cleaning, and capital project management.

#### Custodial History:

Photograph is part of a series of campus images commissioned by the McKee Archives and Communications in the lead up to Brandon University's 50th Anniversary celebration.

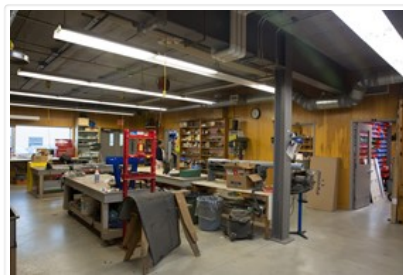
#### Scope and Content:

Photograph shows a work space inside the new Physical Plant building located on the west side of 20th Street, just north of Louise Avenue. The woman in the background is Stacey Harper, Physical Plant Office Assistant. The man in the background is Brent Cuvelier, Carpenter.

Storage Location: JPG on T drive; TIFF on external hard drive

## Images

---





## Brandon College Building and Clark Hall

<http://archives.brandonu.ca/en/permalink/descriptions2520>

Part Of: Brandon University Photograph Collection

Description Level: Item

Series Number: 9

Item Number: BUPC 9.42

Accession Number: 41-1999

GMD: graphic

Date Range: c. 1911

Physical Description: 11" x 14" (b/w)

Scope and Content:

Photograph is looking west northwest from 18th Street and shows the Brandon College Building and Clark Hall.

Name Access: Clark Hall

Brandon College Building

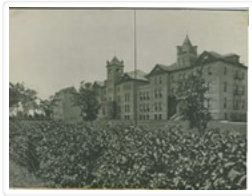
Subject Access: campus buildings

Storage Range: Oversize drawer 5

### Images

---





## Brandon College campus

<http://archives.brandonu.ca/en/permalink/descriptions2521>

Part Of: Brandon University Photograph Collection

Description Level: Item

Series Number: 9

Item Number: BUPC 9.33

Accession Number: 42-1999

GMD: graphic

Date Range: c. 1922

Physical Description: 11" x 13.75" (b/w)

Scope and Content:

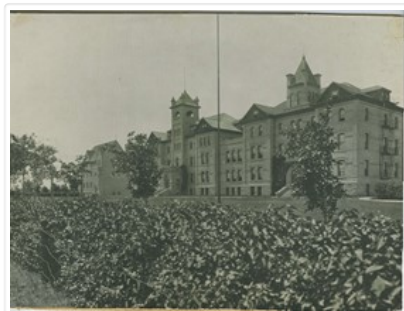
Photograph is looking southwest from the north end of the driveway and 18th Street and shows the Brandon College campus, including the front lawn, Clark Hall, the Brandon College Building and the Citizens' Science Building.

Notes: This photograph was used on a number of the Class photographs in BUPC 9. Duplicate is 9.43.

Storage Range: Oversize drawer 4

### Images

---







## Aerial view: Brandon University campus

<http://archives.brandonu.ca/en/permalink/descriptions2576>

Part Of: Brandon University Photograph Collection

Description Level: Item

Series Number: 9

Item Number: BUPC 9.36

GMD: graphic

Date Range: September 21, 1999

Physical Description: 11" x 14" (colour)

History /

Biographical:

The photograph was taken for the Centennial of Brandon College/University.

Scope and Content:

Aerial photograph taken looking southwest from approximately the northeast corner of Princess Avenue and 17th Street. The entire campus, as well as a number of residential streets are visible.

Notes: Negative is located with the photograph

Subject Access: campus buildings  
aerial photographs  
aerial photography  
aerial views  
cityscapes

Storage Range: Oversized drawer 4

## Images

---





## Aerial view: Brandon University campus

<http://archives.brandonu.ca/en/permalink/descriptions2577>

Part Of: Brandon University Photograph Collection

Creator: Photographer: Aberson Photo

Description Level: Item

Series Number: 9

Item Number: BUPC 9.70

GMD: graphic

Date Range: September 21, 1999

Physical Description: 16" x 20" (colour)

History /

Biographical:

The photograph may have been taken for Brandon University's centennial.

Scope and Content:

Photograph is looking northeast from approximately Victoria Avenue and 21st Street and shows the Brandon University campus, Kinsmen Stadium, the Assiniboine River and a number of residential neighbourhoods.

Storage Range: Oversize drawer 6



## Proposed model for Brandon College Building and Clark Hall renovations

<http://archives.brandonu.ca/en/permalink/descriptions8171>

Part Of: Brandon University Photograph Collection

Description Level: Item

Series Number: 2.2

Item Number: 2.2.100

GMD: graphic

Date Range: c. 1996

Physical Description: 6" x 4" (colour)

Scope and Content:

Photograph of a proposed model for the Brandon College and Clark Hall renovations. Model shows the courtyard, the link, the skywalk and the new rear entrance.

### Images

---





## Proposed model for Brandon College Building and Clark Hall renovations

<http://archives.brandonu.ca/en/permalink/descriptions8192>

Part Of: Brandon University Photograph Collection

Description Level: Item

Series Number: 2.2

Item Number: 2.2.101

GMD: graphic

Date Range: c. 1996

Physical Description: 6" x 4" (colour)

### Scope and Content:

Photograph of a proposed model for the Brandon College and Clark Hall renovations. Model shows the link, the skywalk, the A.E. McKenzie Building and part of the George T. Richardson Centre.

### Images

---





## Proposed model for Brandon College Building and Clark Hall renovations

<http://archives.brandonu.ca/en/permalink/descriptions8193>

Part Of: Brandon University Photograph Collection

Description Level: Item

Series Number: 2.2

Item Number: 2.2.102

GMD: graphic

Date Range: c. 1996

Physical Description: 6" x 4" (colour)

### Scope and Content:

Photograph of a proposed model for the Brandon College and Clark Hall renovations.

Photograph is looking down on the model, which shows the link, the skywalk, west side of Clark Hall and the Original Building and the courtyard.

### Images

---





## Brandon College Building south entrance

<http://archives.brandonu.ca/en/permalink/descriptions8194>

Part Of: Brandon University Photograph Collection

Description Level: Item

Series Number: 2.2

Item Number: 2.2.103

GMD: graphic

Date Range: c. 1996

Physical Description: 6" x 4" (colour)

Scope and Content:

Photograph is looking north and shows the south entrance to the Brandon College Building, particularly the portico under construction.

### Images

---





## Brandon College Building west entrance

<http://archives.brandonu.ca/en/permalink/descriptions8195>

Part Of: Brandon University Photograph Collection

Description Level: Item

Series Number: 2.2

Item Number: 2.2.104

GMD: graphic

Date Range: c. 1996

Physical Description: 6" x 4" (colour)

Scope and Content:

Photograph is looking east and shows the new west entrance to the Brandon College Building under construction.

### Images

---





## Brandon College Building west entrance

<http://archives.brandonu.ca/en/permalink/descriptions8198>

Part Of: Brandon University Photograph Collection

Description Level: Item

Series Number: 2.2

Item Number: 2.2.107

GMD: graphic

Date Range: c. 1996

Physical Description: 6" x 4" (colour)

Scope and Content:

Photograph is looking northeast and shows the steps and portico at the west entrance of the Brandon College Building.

### Images

---







## Brandon College Building west entrance

<http://archives.brandonu.ca/en/permalink/descriptions8199>

Part Of: Brandon University Photograph Collection

Description Level: Item

Series Number: 2.2

Item Number: 2.2.108

GMD: graphic

Date Range: c. 1996

Physical Description: 6" x 4" (colour)

Scope and Content:

Photograph is looking east and shows the preparation work for the sidewalk leading up to the steps and portico at the west entrance of the Brandon College Building.

### Images

---





## Brandon College Building west entrance

<http://archives.brandonu.ca/en/permalink/descriptions8200>

Part Of: Brandon University Photograph Collection

Description Level: Item

Series Number: 2.2

Item Number: 2.2.109

GMD: graphic

Date Range: c. 1996

Physical Description: 6" x 4" (colour)

Scope and Content:

Photograph is looking west and shows workers applying stone to the flight of stairs at the west entrance of the Brandon College Building.

### Images

---





## Brandon College campus

<http://archives.brandonu.ca/en/permalink/descriptions8292>

Part Of:	Brandon University Photograph Collection
Description Level:	Item
Series Number:	9
Item Number:	BUPC 9.43
Accession Number:	42-1999
GMD:	graphic
Date Range:	c. 1922
Physical Description:	11" x 13.75" (b/w)
Physical Condition:	The matting has a large tear and some stains. The photograph itself has a couple of small stains.

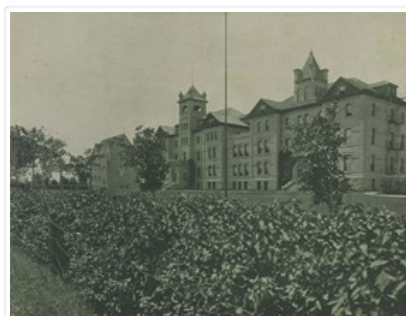
### Scope and Content:

Photograph is looking southwest from the north end of the driveway and 18th Street and shows the Brandon College campus, including the front lawn, Clark Hall, the Brandon College Building and the Citizens' Science Building. Caption on the photograph reads: Brandon College: The Baptist College in Western Canada.

Notes:	Duplicate is BUPC 9.33.
Name Access:	Clark Hall Brandon College Building Citizens' Science Building
Subject Access:	campus buildings
Storage Range:	Oversize drawer 5
Related Material:	BUPC 9.33

## Images

---





## BUPC 8: Portraits

<http://archives.brandonu.ca/en/permalink/descriptions2881>

Part Of: Brandon University Photograph Collection

Description Level: Series

Series Number: 8

GMD: graphic

Date Range: 1900-2000

Physical Description: 365 photographs (b/w & colour)

### Scope and Content:

Series consists of portraits of students, mainly award and scholarship winners, faculty members, and other university staff members. Many of the photographs in the series appear in various editions of the Sickle.

Storage Range: Photograph storage drawers

### Arrangement:

Series has been divided into twenty-six sub-series, representing letters of the alphabet. Individual portraits are arranged alphabetically by last name under each sub-series.