

# S. J. McKee Archives



## Methodist Church Under Construction

<http://archives.brandonu.ca/en/permalink/descriptions9763>

Part Of: RG 11 Lawrence Stuckey fonds

Description Level: Item

Series Number: 3.1

Item Number: 1-2002.3.1K1

Accession Number: 1-2002

GMD: graphic

Date Range: [ca. 1905]

Physical Description: 3 1/2" x 5"

Material Details: Negative

Custodial History:

For custodial history see the collection level description of the Lawrence Stuckey collection.

Scope and Content:

Methodist Church under construction

Notes: Laying cornerstone  
From the Brandon Sun.

Name Access: Methodist Church

Subject Access: Christianity  
Church buildings  
Brandon Churches  
Brandon Early Construction Scenes

Repro Restriction: The McKee Archives is the copyright holder for the Stuckey materials.

Storage Location: Lawrence Stuckey collection

## Images





## Paving Ninth Street

<http://archives.brandonu.ca/en/permalink/descriptions9766>

Part Of: RG 11 Lawrence Stuckey fonds

Description Level: Item

Series Number: 3.1

Item Number: 1-2002.3.1K4

Accession Number: 1-2002

GMD: graphic

Date Range: September 1911

Physical Description: 3 1/2" x 5"

Material Details: Negative

Custodial History:

For custodial history see the collection level description of the Lawrence Stuckey collection.

Scope and Content:

Paving 9th Street north of Rosser Avenue.

Notes: Paving includes 5 1/2" concrete foundation

Photo shows King George Cafe, A.E. McKenzie Building, Clement Block and Prince Edward Hotel under construction

Name Access: King George Cafe

A.E. McKenzie Building

Prince Edward Hotel

Subject Access: construction

paving

hotels

cafes

agricultural buildings

Brandon Early Construction Scenes

Repro Restriction: The McKee Archives is the copyright holder for the Stuckey materials.

Location Copy: 1-2002.3.9.107

Storage Location: Lawrence Stuckey collection

## Images

---





## Construction of Parkview Apartments

<http://archives.brandonu.ca/en/permalink/descriptions9772>

Part Of: RG 11 Lawrence Stuckey fonds

Creator: Wm. Martel

Description Level: Item

Series Number: 3.1

Item Number: 1-2002.3.1K10

Accession Number: 1-2002

GMD: graphic

Date Range: 1915

Physical Description: 3 1/2" x 5"

Material Details: Negative

Custodial History:

For custodial history see the collection level description of the Lawrence Stuckey collection.

Scope and Content:

Construction of Parkview Apartments

Notes: Located at 14th St. and Princess Avenue

Contractor E.C. "Ted" Higgens

Courtesy of Mrs. Millen Dunbar nee May (Higgens) Dunbar

Name Access: Parkview Apartments

Subject Access: apartment buildings

construction

Brandon Early Construction Scenes

Repro Restriction: The McKee Archives is the copyright holder for the Stuckey materials.

Storage Location: Lawrence Stuckey collection

## Images

---





## Construction of St. Mary's Ukrainian Catholic Church

<http://archives.brandonu.ca/en/permalink/descriptions9773>

Part Of: RG 11 Lawrence Stuckey fonds

Creator: L.A. Stuckey

Description Level: Item

Series Number: 3.1

Item Number: 1-2002.3.1K11

Accession Number: 1-2002

GMD: graphic

Date Range: [between 1939 and 1941]

Physical Description: 2 1/2" x 2 1/2"

Material Details: Negative

History /

Biographical:

Construction began in 1939 and was completed in 1941.

Custodial History:

For custodial history see the collection level description of the Lawrence Stuckey collection.

Scope and Content:

Construction of St. Mary's Ukrainian Catholic Church

Notes: The small building is a shoe shop; sign by pole reads "Harry's Shoe Shop"

From the collection of Harry Pasklivich (the shoemaker)

Name Access: St. Mary's Ukrainian Catholic Church

Subject Access: shoe stores

Christianity

Church buildings

Brandon Churches

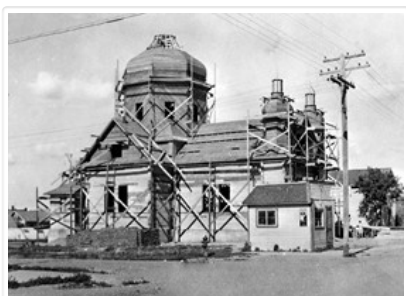
Brandon Early Construction Scenes

Repro Restriction: The McKee Archives is the copyright holder for the Stuckey materials.

Storage Location: Lawrence Stuckey collection

### Images

---



## Gordon Church



<http://archives.brandonu.ca/en/permalink/descriptions9848>

Part Of: RG 11 Lawrence Stuckey fonds

Description Level: Item

Series Number: 3.1

Item Number: 1-2002.3.1M30(23)

Accession Number: 1-2002

GMD: graphic

Date Range: [197-?]

Physical Description: 3 1/2" x 5"

Material Details: Negative

Custodial History:

For custodial history see the collection level description of the Lawrence Stuckey collection.

Scope and Content:

Gordon Church, President of Combined Provincial Exhibition and Winter Fair Board 1975 - 1977.

Notes: Mr. Stuckey originally placed 32 negatives in one envelope labeled "M – Presidents of Fair Boards 1882 – 1972"; We have separated and renumbered these negatives as M30(1) to M30(32) inclusively; Records of the Provincial Exhibition Association are held in the S.J. McKee Archives (RG2) including photos of board members.

Name Access: Gordon Church

Presidents of Fair Boards

Subject Access: fairs

exhibitions

Provincial Exhibitions

officials

Brandon Exhibitions & Facilities

Repro Restriction: The McKee Archives is the copyright holder for the Stuckey materials.

Storage Location: Lawrence Stuckey collection

## Images

---





## Brandon Hills Church Choir

<http://archives.brandonu.ca/en/permalink/descriptions9907>

Part Of: RG 11 Lawrence Stuckey fonds

Description Level: Item

Series Number: 3.1

Item Number: 1-2002.3.10A2

Accession Number: 1-2002

GMD: graphic

Date Range: 1905

Physical Description: 3 1/2" x 5"

Material Details: Negative

Custodial History:

For custodial history see the collection level description of the Lawrence Stuckey collection.

Scope and Content:

Brandon Hills Church Choir

Notes: Left to right. Back row: Mrs. Alden Blight, Wes. Stewart, Bessie Waugh (nee Roddick, later Chapman), Mary Baker, Alden Blight. Front row: Rachael Baker, Aletha Blight, Mr. Waugh.

Photo courtesy of J.V. Baker.

Name Access: Brandon Hills Church Choir

Subject Access: religions

Christianity

choirs

Brandon Hills Community

Repro Restriction: The McKee Archives is the copyright holder for the Stuckey materials.

Location Copy: 1-2002.3.9.104

Storage Location: Lawrence Stuckey collection

### Images

---



## Brandon Hills Church



<http://archives.brandonu.ca/en/permalink/descriptions9908>

Part Of: RG 11 Lawrence Stuckey fonds

Creator: L.A. Stuckey

Description Level: Item

Series Number: 3.1

Item Number: 1-2002.3.1OA3(1)

Accession Number: 1-2002

GMD: graphic

Date Range: October 27, 1978

Physical Description: 2 1/2" x 2 1/2"

Material Details: Negative

History /

Biographical:

Built 1896; Dedicated Oct. 18, 1896.

Custodial History:

For custodial history see the collection level description of the Lawrence Stuckey collection.

Scope and Content:

Brandon Hills Church

Notes: View from northwest showing part of cemetery. Best neg.

[Mr. Stuckey had taped a print to the outside of the envelope. We have separated the negative and the print, numbering them OA3(1) and OA3(1a) respectively.]

Name Access: Brandon Hills Church

Subject Access: religions

Christianity

Church buildings

Brandon Hills Community

Repro Restriction: The McKee Archives is the copyright holder for the Stuckey materials.

Storage Location: Lawrence Stuckey collection

## Images

---





## Brandon Hills Church

<http://archives.brandonu.ca/en/permalink/descriptions9909>

Part Of: RG 11 Lawrence Stuckey fonds

Creator: L.A. Stuckey

Description Level: Item

Series Number: 3.1

Item Number: 1-2002.3.1OA3(1a)

Accession Number: 1-2002

GMD: graphic

Date Range: October 27, 1978

Physical Description: 1 3/4" x 2 1/2"

Material Details: Photograph

History /

Biographical:

Built 1896; Dedicated Oct. 18, 1896.

Custodial History:

For custodial history see the collection level description of the Lawrence Stuckey collection.

Scope and Content:

Brandon Hills Church

Notes:

View from northwest showing part of cemetery. Best neg.

[Mr. Stuckey had taped a print to the outside of the envelope. We have separated the negative and the print, numbering them OA3(1) and OA3(1a) respectively.]

Name Access: Brandon Hills Church

Subject Access: religions

Christianity

Church buildings

Brandon Hills Community

Repro Restriction: The McKee Archives is the copyright holder for the Stuckey materials.

Storage Location: Lawrence Stuckey collection

## Images

---





## Brandon Hills Church

<http://archives.brandonu.ca/en/permalink/descriptions9910>

Part Of: RG 11 Lawrence Stuckey fonds

Creator: L.A. Stuckey

Description Level: Item

Series Number: 3.1

Item Number: 1-2002.3.1OA4

Accession Number: 1-2002

GMD: graphic

Date Range: December 5, 1978

Physical Description: 2 1/2" x 2 1/2"

Material Details: Negative

Custodial History:

For custodial history see the collection level description of the Lawrence Stuckey collection.

Scope and Content:

Brandon Hills Church

Notes: Very good [view of] front & south sides.

[Mr. Stuckey had put negatives OA4 and OA5 in the same envelope. We have separated them.]

Name Access: Brandon Hills Church

Subject Access: religions

Christianity

Church buildings

Brandon Hills Community

Repro Restriction: The McKee Archives is the copyright holder for the Stuckey materials.

Storage Location: Lawrence Stuckey collection

### Images

---





## Brandon Hills Church

<http://archives.brandonu.ca/en/permalink/descriptions9911>

Part Of: RG 11 Lawrence Stuckey fonds

Creator: L.A. Stuckey

Description Level: Item

Series Number: 3.1

Item Number: 1-2002.3.1OA5

Accession Number: 1-2002

GMD: graphic

Date Range: December 5, 1978

Physical Description: 2 1/2" x 2 1/2"

Material Details: Negative

Custodial History:

For custodial history see the collection level description of the Lawrence Stuckey collection.

Scope and Content:

Brandon Hills Church

Notes: Very good [view of] front & south sides.

[Mr. Stuckey had put negatives OA4 and OA5 in the same envelope. We have separated them.]

Name Access: Brandon Hills Church

Subject Access: religions

Christianity

Church buildings

Brandon Hills Community

Repro Restriction: The McKee Archives is the copyright holder for the Stuckey materials.

Storage Location: Lawrence Stuckey collection

### Images

---





## Brandon Hills Church

<http://archives.brandonu.ca/en/permalink/descriptions9912>

Part Of: RG 11 Lawrence Stuckey fonds

Creator: L.A. Stuckey

Description Level: Item

Series Number: 3.1

Item Number: 1-2002.3.1OA6

Accession Number: 1-2002

GMD: graphic

Date Range: October 22, 1978

Physical Description: 2 1/2" x 2 1/2"

Material Details: Negative

Custodial History:

For custodial history see the collection level description of the Lawrence Stuckey collection.

Scope and Content:

Exterior of Brandon Hills Church

Notes: Front & north sides from the northeast.

View includes the churchyard cemetery.

Name Access: Brandon Hills Church

Subject Access: religions

Christianity

Church buildings

Brandon Hills Community

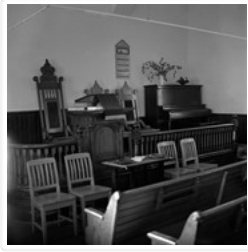
Repro Restriction: The McKee Archives is the copyright holder for the Stuckey materials.

Storage Location: Lawrence Stuckey collection

### Images

---





## Brandon Hills Church - Interior

<http://archives.brandonu.ca/en/permalink/descriptions9913>

Part Of: RG 11 Lawrence Stuckey fonds

Creator: L.A. Stuckey

Description Level: Item

Series Number: 3.1

Item Number: 1-2002.3.1OA7(1)

Accession Number: 1-2002

GMD: graphic

Date Range: October 22, 1978

Physical Description: 2 1/2" x 2 1/2"

Material Details: Negative

Custodial History:

For custodial history see the collection level description of the Lawrence Stuckey collection.

Scope and Content:

Interior of Brandon Hills Church

Notes: [Mr. Stuckey had taped a print to the outside of the envelope. We have separated the negative and the print, numbering them OA7(1) and OA7(1a) respectively.]

Name Access: Brandon Hills Church

Subject Access: religions

Christianity

Church buildings

Brandon Hills Community

Repro Restriction: The McKee Archives is the copyright holder for the Stuckey materials.

Storage Location: Lawrence Stuckey collection

### Images

---





## Brandon Hills Church - Interior

<http://archives.brandonu.ca/en/permalink/descriptions9914>

Part Of: RG 11 Lawrence Stuckey fonds

Creator: L.A. Stuckey

Description Level: Item

Series Number: 3.1

Item Number: 1-2002.3.1OA7(1a)

Accession Number: 1-2002

GMD: graphic

Date Range: October 22, 1978

Physical Description: 2 1/2" x 2 1/2"

Material Details: Photograph

Custodial History:

For custodial history see the collection level description of the Lawrence Stuckey collection.

Scope and Content:

Interior of Brandon Hills Church

Notes: [Mr. Stuckey had taped a print to the outside of the envelope. We have separated the negative and the print, numbering them OA7(1) and OA7(1a) respectively.]

Name Access: Brandon Hills Church

Subject Access: religions

Christianity

Church buildings

Brandon Hills Community

Repro Restriction: The McKee Archives is the copyright holder for the Stuckey materials.

Storage Location: Lawrence Stuckey collection

### Images

---





## CPR Freight Shed

<http://archives.brandonu.ca/en/permalink/descriptions9928>

Part Of: RG 11 Lawrence Stuckey fonds

Creator: Martel

Description Level: Item

Series Number: 3.1

Item Number: 1-2002.3.1P5

Accession Number: 1-2002

GMD: graphic

Date Range: 1903

Physical Description: 3 1/2" x 5"

Material Details: Negative

History /

Biographical:

Freight shed replaced in 1904.

Custodial History:

For custodial history see the collection level description of the Lawrence Stuckey collection.

Scope and Content:

Original Canadian Pacific Railway freight shed

Notes: Including A.K. & Co. elevator.

Name Access: CPR Freight Shed

Subject Access: industrial buildings

warehouses

freight trains

Canadian Pacific Railway in Brandon

Repro Restriction: The McKee Archives is the copyright holder for the Stuckey materials.

Location Copy: 1-2002.3.9.150

Storage Location: Lawrence Stuckey collection

## Images

---





## CPR Locomotive Shops' Office Building

<http://archives.brandonu.ca/en/permalink/descriptions9954>

Part Of: RG 11 Lawrence Stuckey fonds

Creator: Harold Watson (shop carpenter)

Description Level: Item

Series Number: 3.1

Item Number: 1-2002.3.1P28

Accession Number: 1-2002

GMD: graphic

Date Range: [195-]

Physical Description: 3 1/2" x 5"

Material Details: Negative

### History /

#### Biographical:

Built 1929

Razed 1962.

#### Custodial History:

For custodial history see the collection level description of the Lawrence Stuckey collection.

#### Scope and Content:

CPR Locomotive Shops' Office Building

Name Access: CPR Engine Terminal

Subject Access: railroads

railways

Buildings

Canadian Pacific Railway in Brandon

Repro Restriction: The McKee Archives is the copyright holder for the Stuckey materials.

Location Copy: 1-2002.3.9.90

Storage Location: Lawrence Stuckey collection

## Images

---





## CPR & City Centre from Brandon Brewery

<http://archives.brandonu.ca/en/permalink/descriptions9957>

Part Of: RG 11 Lawrence Stuckey fonds

Creator: George H. Harris

Description Level: Item

Series Number: 3.1

Item Number: 1-2002.3.1P31

Accession Number: 1-2002

GMD: graphic

Date Range: September 1937

Physical Description: 2 1/2" x 4 1/2"

Material Details: Negative

Custodial History:

For custodial history see the collection level description of the Lawrence Stuckey collection.

Scope and Content:

View of CPR's west yard & city centre from Brandon Brewery on Assiniboine Avenue.

Notes: Image shows CPR freight sheds & station, Great Northern station, and many core area buildings

Collection of George H. Harris, Winnipeg, Man.

Name Access: CPR Freight Train

CPR Freight Shed

Brandon Skyline

Subject Access: railroads

railways

railway stations

freight trains

industrial buildings

warehouses

Elevators

Canadian Pacific Railway in Brandon

Repro Restriction: The McKee Archives is the copyright holder for the Stuckey materials.

Location Copy: 1-2002.3.9.105

Storage Location: Lawrence Stuckey collection

### Images

---





## Construction of Great Northern (BS&HB) Railway Bridge at Bunclody - Grade

<http://archives.brandonu.ca/en/permalink/descriptions9977>

Part Of: RG 11 Lawrence Stuckey fonds

Description Level: Item

Series Number: 3.1

Item Number: 1-2002.3.1PE1

Accession Number: 1-2002

GMD: graphic

Date Range: [1905 or 1906]

Physical Description: 3 1/2" x 5"

Material Details: Negative

History /

Biographical:

According to Stuckey and Bain (1996), "The Brandon, Saskatchewan & Hudson's Bay Railway was built and operated as a totally owned subsidiary of the Great Northern Railway. Construction commenced in late 1905 and by the end of 1905, less than a mile of track had been laid north of the boundary at St. John. In 1906, the remaining 68.6 miles to Brandon were laid and service commenced that year. During the Depression of the 1930s, traffic declined significantly and the entire branch was abandoned in 1936. Over much of the branch's length, the ties and rails were laid on the prairie without ballast and today little remains of the line apart from traces where there were cuts and bridges." (p. 18)

Stuckey, L. A., & Bain, D. M. (1996). The Great Northern and Northern Pacific railways in Canada. Calgary, Alberta: British Railway Modellers of North America.

Custodial History:

For custodial history see the collection level description of the Lawrence Stuckey collection.

Scope and Content:

View of the Great Northern (BS&HB) Railway building a grade [to their bridge] at Bunclody, Manitoba.

Notes: [This railway bridge crossed the Souris River. P.E.]

From the collection of Gilford Copeland of Bunclody, Manitoba  
Copy negative LAS.

Name Access: Construction of Great Northern (BS&HB) Railway  
Brandon, Saskatchewan & Hudson's Bay Railway  
Great Northern Railway

Subject Access: railroads  
railways  
manmade geographic features  
construction  
construction of bridges  
bridges  
Great Northern Railway from Church's Ferry ND to Brandon MB

Repro Restriction: The McKee Archives is the copyright holder for the Stuckey materials.

Storage Location: Lawrence Stuckey collection

### Images



## Construction of Great Northern (BS&HB) Railway Bridge at Bunclody - Grading Station

<http://archives.brandonu.ca/en/permalink/descriptions9978>

Part Of: RG 11 Lawrence Stuckey fonds

Description Level: Item

Series Number: 3.1

Item Number: 1-2002.3.1PE2

Accession Number: 1-2002

GMD: graphic

Date Range: [1905 or 1906]

Physical Description: 3 1/2" x 5"

Material Details: Negative

History /

Biographical:

According to Stuckey and Bain (1996), "The Brandon, Saskatchewan & Hudson's Bay Railway was built and operated as a totally owned subsidiary of the Great Northern Railway.

Construction commenced in late 1905 and by the end of 1905, less than a mile of track had been laid north of the boundary at St. John. In 1906, the remaining 68.6 miles to Brandon were laid and service commenced that year. During the Depression of the 1930s, traffic declined significantly and the entire branch was abandoned in 1936. Over much of the branch's length, the ties and rails were laid on the prairie without ballast and today little remains of the line apart from traces where there were cuts and bridges." (p. 18)

Stuckey, L. A., & Bain, D. M. (1996). The Great Northern and Northern Pacific railways in Canada. Calgary, Alberta: British Railway Modellers of North America.

Custodial History:

For custodial history see the collection level description of the Lawrence Stuckey collection.

Scope and Content:

View of the Great Northern (BS&HB) Railway building a grade [to their bridge] at Bunclody, Manitoba.

Notes: Grading station site

From the collection of Gilford Copeland of Bunclody, Manitoba

Copy negative LAS.

Name Access: Construction of Great Northern (BS&HB) Railway  
Brandon, Saskatchewan & Hudson's Bay Railway  
Great Northern Railway

Subject Access:       railroads  
                              railways  
                              manmade geographic features  
                              construction  
                              construction of bridges  
                              bridges  
                              Great Northern Railway from Church's Ferry ND to Brandon MB

Repro Restriction:    The McKee Archives is the copyright holder for the Stuckey materials.

Storage Location:     Lawrence Stuckey collection

## Images

---



### Great Northern Railway Steam Shovel & Cars

<http://archives.brandonu.ca/en/permalink/descriptions9979>

Part Of:               RG 11 Lawrence Stuckey fonds

Description Level:   Item

Series Number:       3.1

Item Number:         1-2002.3.1PE3

Accession Number:   1-2002

GMD:                 graphic

Date Range:           [1905 or 1906]

Physical Description: 3 1/2" x 5"

Material Details:     Negative

History /

Biographical:

According to Stuckey and Bain (1996), "The Brandon, Saskatchewan & Hudson's Bay Railway was built and operated as a totally owned subsidiary of the Great Northern Railway. Construction commenced in late 1905 and by the end of 1905, less than a mile of track had been laid north of the boundary at St. John. In 1906, the remaining 68.6 miles to Brandon were laid and service commenced that year. During the Depression of the 1930s, traffic declined significantly and the entire branch was abandoned in 1936. Over much of the branch's length, the ties and rails were laid on the prairie without ballast and today little remains of the line apart from traces where there were cuts and bridges." (p. 18)

Stuckey, L. A., & Bain, D. M. (1996). The Great Northern and Northern Pacific railways in Canada. Calgary, Alberta: British Railway Modellers of North America.

Custodial History:

For custodial history see the collection level description of the Lawrence Stuckey collection.

Scope and Content:

Great Northern Railway steam shovel & earth cars.

Notes:	Used in the construction of the Brandon, Saskatchewan and Hudson's Bay Railway at Bunclody, Manitoba Great Northern Railway photo From the collection of Gilford Copeland of Bunclody, Manitoba Copy negative LAS.
Name Access:	Construction of Great Northern (BS&HB) Railway Brandon, Saskatchewan & Hudson's Bay Railway Great Northern Railway
Subject Access:	steam shovels railroads railways manmade geographic features construction of bridges bridges Great Northern Railway from Church's Ferry ND to Brandon MB
Repro Restriction:	The McKee Archives is the copyright holder for the Stuckey materials.
Storage Location:	Lawrence Stuckey collection

## Images

---



### Great Northern Railway crane on Souris River bridge

<http://archives.brandonu.ca/en/permalink/descriptions9980>

Part Of:	RG 11 Lawrence Stuckey fonds
Creator:	Great Northern Railway
Description Level:	Item
Series Number:	3.1
Item Number:	1-2002.3.1PE4
Accession Number:	1-2002
GMD:	graphic
Date Range:	[between 1905 and 1936]
Physical Description:	3 1/2" x 5"

Material Details: Negative

History /

Biographical:

According to Stuckey and Bain (1996), "The Brandon, Saskatchewan & Hudson's Bay Railway was built and operated as a totally owned subsidiary of the Great Northern Railway. Construction commenced in late 1905 and by the end of 1905, less than a mile of track had been laid north of the boundary at St. John. In 1906, the remaining 68.6 miles to Brandon were laid and service commenced that year. During the Depression of the 1930s, traffic declined significantly and the entire branch was abandoned in 1936. Over much of the branch's length, the ties and rails were laid on the prairie without ballast and today little remains of the line apart from traces where there were cuts and bridges." (p. 18)

Stuckey, L. A., & Bain, D. M. (1996). The Great Northern and Northern Pacific railways in Canada. Calgary, Alberta: British Railway Modellers of North America.

Custodial History:

For custodial history see the collection level description of the Lawrence Stuckey collection.

Scope and Content:

Great Northern Railway crane on Souris River bridge, Bunclody, Manitoba.

Notes:

[Mr. Stuckey is unsure if this photo was taken during construction of the bridge, or whether it may have been taken during its dismantling when the railway line closed. P.E.]

From the collection of Gilford Copeland of Bunclody, Manitoba

Copy negative LAS.

Name Access:

Construction of Great Northern (BS&HB) Railway  
Brandon, Saskatchewan & Hudson's Bay Railway  
Great Northern Railway

Subject Access:

cranes  
railroads  
railways  
manmade geographic features  
construction of bridges  
bridges  
Great Northern Railway from Church's Ferry ND to Brandon MB

Repro Restriction:

The McKee Archives is the copyright holder for the Stuckey materials.

Storage Location:

Lawrence Stuckey collection

## Images

---

