

S. J. McKee Archives



A.E. McKenzie Seeds

<http://archives.brandonu.ca/en/permalink/descriptions12405>

Part Of: RG 12 Brandon and Area Photograph Collection
Description Level: Item
Series Number: 2
Item Number: BAPC 2.35
Accession Number: 3-2012
GMD: graphic
Date Range: [between 1911 and 1913]
Physical Description: 3.5" x 5.5" (b/w)
Material Details: Postcard
Physical Condition: Some water damage and staining.

Custodial History:

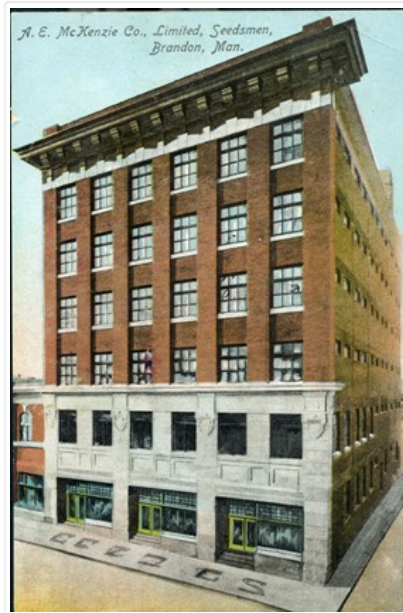
Postcard was donated to the McKee Archives by Allen Drysdale, archivist at Beautiful Plains Archives in October 2011. Drysdale received the postcard as part of a larger donation to his archives.

Scope and Content:

Item is a colour postcard of the A.E. McKenzie Seed Company in Brandon, MB. The postcard was sent to John Dorset, Elphinstone, MB from his brother Sid (?).

Name Access: A.E. McKenzie Co., Limited
A.E. McKenzie Seed Company
9th Street
Subject Access: commercial buildings
businesses
downtown
Storage Location: BAPC photograph drawer

Images



Canadian Pacific and Great Northern Yards and Station in Brandon

<http://archives.brandonu.ca/en/permalink/descriptions10000>

Part Of: RG 11 Lawrence Stuckey fonds
Description Level: Item
Series Number: 3.1
Item Number: 1-2002.3.1PE23
Accession Number: 1-2002
GMD: graphic
Date Range: [1913?]
Physical Description: 3 1/2" x 5"
Material Details: Negative

History /

Biographical:

According to Stuckey and Bain (1996), "The Brandon, Saskatchewan & Hudson's Bay Railway was built and operated as a totally owned subsidiary of the Great Northern Railway. Construction commenced in late 1905 and by the end of 1905, less than a mile of track had been laid north of the boundary at St. John. In 1906, the remaining 68.6 miles to Brandon were laid and service commenced that year. During the Depression of the 1930s, traffic declined significantly and the entire branch was abandoned in 1936. Over much of the branch's length, the ties and rails were laid on the prairie without ballast and today little remains of the line apart from traces where there were cuts and bridges." (p. 18)

Stuckey, L. A., & Bain, D. M. (1996). *The Great Northern and Northern Pacific railways in Canada*. Calgary, Alberta: British Railway Modellers of North America.

Custodial History:

For custodial history see the collection level description of the Lawrence Stuckey collection.

Scope and Content:

View of Canadian Pacific (foreground) and Great Northern (background) railway yards, as well as Great Northern station in Brandon, Manitoba.

Notes: Shows a 500 series F-1 class 2-8-0 engine switching
Published in Canadian Rail, August 1975
Buildings that are visible in this photo, but now gone (1987), include Codvilles, Western Grocers (Burbridge Saddlery), John E. Smith Block, Federal building, City Hall, and the Prince Edward Hotel [Fred McGuinness collection (20-2009)].
[This copy negative was produced using a previously published image. P.E. 30/07/09]

Name Access: Brandon Skyline
Brandon, Saskatchewan & Hudson's Bay Railway
Great Northern Railway
Great Northern Railway stations

Subject Access: railroads
railways
railway stations
freight trains
locomotives
Great Northern Railway from Church's Ferry ND to Brandon MB

Repro Restriction: The McKee Archives is the copyright holder for the Stuckey materials.

Storage Location: Lawrence Stuckey collection

Images



Great Northern Station at Brandon

<http://archives.brandonu.ca/en/permalink/descriptions10001>

Part Of: RG 11 Lawrence Stuckey fonds
Description Level: Item
Series Number: 3.1
Item Number: 1-2002.3.1PE24
Accession Number: 1-2002
GMD: graphic
Date Range: 1919
Physical Description: 3 1/2" x 5"
Material Details: Negative

History /

Biographical:

According to Stuckey and Bain (1996), "The Brandon, Saskatchewan & Hudson's Bay Railway was built and operated as a totally owned subsidiary of the Great Northern Railway. Construction commenced in late 1905 and by the end of 1905, less than a mile of track had been laid north of the boundary at St. John. In 1906, the remaining 68.6 miles to Brandon were laid and service commenced that year. During the Depression of the 1930s, traffic declined significantly and the entire branch was abandoned in 1936. Over much of the branch's length, the ties and rails were laid on the prairie without ballast and today little remains of the line apart from traces where there were cuts and bridges." (p. 18)

Stuckey, L. A., & Bain, D. M. (1996). The Great Northern and Northern Pacific railways in Canada. Calgary, Alberta: British Railway Modellers of North America.

Custodial History:

For custodial history see the collection level description of the Lawrence Stuckey collection.

Scope and Content:

View of the Great Northern Railway's station in Brandon, Manitoba.

Notes: [Looking southeast; Pacific Avenue was located directly north (left) of the station and tracks. P.E. 30/07/09]

Name Access: Brandon Skyline
Brandon, Saskatchewan & Hudson's Bay Railway
Great Northern Railway
Great Northern Railway stations

Subject Access: railroads
railways
railway stations
Great Northern Railway from Church's Ferry ND to Brandon MB

Repro Restriction: The McKee Archives is the copyright holder for the Stuckey materials.

Storage Location: Lawrence Stuckey collection

Images



Great Northern Engine 185 at Minot, ND

<http://archives.brandonu.ca/en/permalink/descriptions10002>

Part Of: RG 11 Lawrence Stuckey fonds

Creator: L.A. Stuckey

Description Level: Item

Series Number: 3.1
Item Number: 1-2002.3.1PE25
Accession Number: 1-2002
GMD: graphic
Date Range: July 19, 1938
Physical Description: 2 1/2" x 3 1/2"
Material Details: Negative

History /

Biographical:

According to Stuckey and Bain (1996), "The Brandon, Saskatchewan & Hudson's Bay Railway was built and operated as a totally owned subsidiary of the Great Northern Railway. Construction commenced in late 1905 and by the end of 1905, less than a mile of track had been laid north of the boundary at St. John. In 1906, the remaining 68.6 miles to Brandon were laid and service commenced that year. During the Depression of the 1930s, traffic declined significantly and the entire branch was abandoned in 1936. Over much of the branch's length, the ties and rails were laid on the prairie without ballast and today little remains of the line apart from traces where there were cuts and bridges." (p. 18)

This engine was built by Brooks in March of 1883 as No. 887 and marked as scrap [by the GN] in 1937. This engine is known to have worked passenger trains to Brandon. This class of locomotive was replaced by gas-electric [power units] in 1929 but they would be used if no gas-electric was available. Engine 185 sat dead in Minot from the closing of the Brandon line until it was scrapped.

Custodial History:

For custodial history see the collection level description of the Lawrence Stuckey collection.

Scope and Content:

Great Northern Engine 185, a class B-19 4-4-0 ["American"] type at Minot, ND.

Notes: Small copy neg. Quote in HistoryBio taken from Stuckey, L. A., & Bain, D. M. (1996). The Great Northern and Northern Pacific railways in Canada. Calgary, Alberta: British Railway Modellers of North America.

Name Access: Brandon, Saskatchewan & Hudson's Bay Railway
Great Northern Railway

Subject Access: railroads
railways
locomotives
passenger trains
Great Northern Railway from Church's Ferry ND to Brandon MB

Repro Restriction: The McKee Archives is the copyright holder for the Stuckey materials.

Storage Location: Lawrence Stuckey collection

Images





Great Northern Gas-Electric 2327 & Train at Rugby ND

<http://archives.brandonu.ca/en/permalink/descriptions10003>

Part Of: RG 11 Lawrence Stuckey fonds

Description Level: Item

Series Number: 3.1

Item Number: 1-2002.3.1PE26

Accession Number: 1-2002

GMD: graphic

Date Range: July 21, 1938

Physical Description: 2 1/4" x 2 3/4"

Material Details: Negative

History /

Biographical:

According to Stuckey and Bain (1996), "The Brandon, Saskatchewan & Hudson's Bay Railway was built and operated as a totally owned subsidiary of the Great Northern Railway.

Construction commenced in late 1905 and by the end of 1905, less than a mile of track had been laid north of the boundary at St. John. In 1906, the remaining 68.6 miles to Brandon were laid and service commenced that year. During the Depression of the 1930s, traffic declined significantly and the entire branch was abandoned in 1936. Over much of the branch's length, the ties and rails were laid on the prairie without ballast and today little remains of the line apart from traces where there were cuts and bridges." (p. 18)

Stuckey, L. A., & Bain, D. M. (1996). *The Great Northern and Northern Pacific railways in Canada*. Calgary, Alberta: British Railway Modellers of North America.

Custodial History:

For custodial history see the collection level description of the Lawrence Stuckey collection.

Scope and Content:

Great Northern [gas-electric power unit] 2327 & Train at Rugby, ND.

Notes: Built by Brill/Westinghouse in June of 1928; scrapped June 1956. This unit ran with a similar train to Brandon, Manitoba from 1929 until 1936.

Name Access: Brandon, Saskatchewan & Hudson's Bay Railway

Great Northern Railway

Subject Access: railroads

railways

locomotives

passenger trains

Great Northern Railway from Church's Ferry ND to Brandon MB

Repro Restriction: The McKee Archives is the copyright holder for the Stuckey materials.

Storage Location: Lawrence Stuckey collection

Images



Great Northern wedge snowplow at Minot, ND

<http://archives.brandonu.ca/en/permalink/descriptions10004>

Part Of: RG 11 Lawrence Stuckey fonds

Creator: George H. Harris

Description Level: Item

Series Number: 3.1

Item Number: 1-2002.3.1PE27

Accession Number: 1-2002

GMD: graphic

Date Range: July 1938

Physical Description: 2" x 2 3/4"

Material Details: Negative

History /

Biographical:

According to Stuckey and Bain (1996), "The Brandon, Saskatchewan & Hudson's Bay Railway was built and operated as a totally owned subsidiary of the Great Northern Railway.

Construction commenced in late 1905 and by the end of 1905, less than a mile of track had been laid north of the boundary at St. John. In 1906, the remaining 68.6 miles to Brandon were laid and service commenced that year. During the Depression of the 1930s, traffic declined significantly and the entire branch was abandoned in 1936. Over much of the branch's length, the ties and rails were laid on the prairie without ballast and today little remains of the line apart from traces where there were cuts and bridges." (p. 18)

Stuckey, L. A., & Bain, D. M. (1996). *The Great Northern and Northern Pacific railways in Canada*. Calgary, Alberta: British Railway Modellers of North America.

Custodial History:

For custodial history see the collection level description of the Lawrence Stuckey collection.

Scope and Content:

Great Northern wedge snowplow on ore gondola, Minot, ND.

Notes: From the collection of George H. Harris, Winnipeg, Manitoba.

Stuckey and Bain (1996, p. 21) note that "Built in the company shops, simply by adding a plow to an ore jenny which was filled with rocks, these vehicles were quite effective at removing snow from single tracks."

Name Access: Brandon, Saskatchewan & Hudson's Bay Railway
Great Northern Railway

Subject Access: railroads
railways
freight trains
Great Northern Railway from Church's Ferry ND to Brandon MB

Repro Restriction: The McKee Archives is the copyright holder for the Stuckey materials.

Storage Location: Lawrence Stuckey collection

Images



Remnants of Great Northern Railway, Hebron, Manitoba

<http://archives.brandonu.ca/en/permalink/descriptions10005>

Part Of: RG 11 Lawrence Stuckey fonds

Creator: L.A. Stuckey

Description Level: Item

Series Number: 3.1

Item Number: 1-2002.3.1PE28(1)

Accession Number: 1-2002

GMD: graphic

Date Range: [1971?]

Physical Description: 2 1/2" x 2 1/2"

Material Details: Negative

History /

Biographical:

According to Stuckey and Bain (1996), "The Brandon, Saskatchewan & Hudson's Bay Railway was built and operated as a totally owned subsidiary of the Great Northern Railway. Construction commenced in late 1905 and by the end of 1905, less than a mile of track had been laid north of the boundary at St. John. In 1906, the remaining 68.6 miles to Brandon were laid and service commenced that year. During the Depression of the 1930s, traffic declined significantly and the entire branch was abandoned in 1936. Over much of the branch's length, the ties and rails were laid on the prairie without ballast and today little remains of the line apart from traces where there were cuts and bridges." (p. 18)

Stuckey, L. A., & Bain, D. M. (1996). The Great Northern and Northern Pacific railways in Canada. Calgary, Alberta: British Railway Modellers of North America.

Custodial History:

For custodial history see the collection level description of the Lawrence Stuckey collection.

Scope and Content:

Remnants of Great Northern Railway, Hebron, Manitoba. Visible features include the former Great Northern (BS&HB) Railway grade with tie indents, as well as concrete foundation blocks that may have been used for a coal dock.

Name Access: Remnants of Great Northern Railway, Hebron, Manitoba
Brandon, Saskatchewan & Hudson's Bay Railway
Great Northern Railway

Subject Access: railroads
railways
Great Northern Railway from Church's Ferry ND to Brandon MB

Repro Restriction: The McKee Archives is the copyright holder for the Stuckey materials.

Storage Location: Lawrence Stuckey collection

Arrangement:

[Mr. Stuckey put two negatives and two prints in the same envelope. We have separated them, numbering the negatives PE28(1) and PE28(2), and the respective prints PE28(1a) and PE28(2a).

Images



Remnants of Great Northern Railway, Hebron, Manitoba

<http://archives.brandonu.ca/en/permalink/descriptions10006>

Part Of: RG 11 Lawrence Stuckey fonds
Creator: L.A. Stuckey
Description Level: Item
Series Number: 3.1
Item Number: 1-2002.3.1PE28(2)
Accession Number: 1-2002
GMD: graphic
Date Range: [1971?]
Physical Description: 2 1/2" x 2 1/2"
Material Details: Negative

History /

Biographical:

According to Stuckey and Bain (1996), "The Brandon, Saskatchewan & Hudson's Bay Railway was built and operated as a totally owned subsidiary of the Great Northern Railway. Construction commenced in late 1905 and by the end of 1905, less than a mile of track had been laid north of the boundary at St. John. In 1906, the remaining 68.6 miles to Brandon were laid and service commenced that year. During the Depression of the 1930s, traffic declined significantly and the entire branch was abandoned in 1936. Over much of the branch's length, the ties and rails were laid on the prairie without ballast and today little remains of the line apart from traces where there were cuts and bridges." (p. 18)

Stuckey, L. A., & Bain, D. M. (1996). The Great Northern and Northern Pacific railways in Canada. Calgary, Alberta: British Railway Modellers of North America.

Custodial History:

For custodial history see the collection level description of the Lawrence Stuckey collection.

Scope and Content:

Remnants of Great Northern Railway, Hebron, Manitoba. Visible features include the former Great Northern (BS&HB) Railway grade with tie indents, as well as concrete foundation blocks that may have been used for a coal dock.

Name Access: Remnants of Great Northern Railway, Hebron, Manitoba
Brandon, Saskatchewan & Hudson's Bay Railway
Great Northern Railway

Subject Access: railroads
railways
Great Northern Railway from Church's Ferry ND to Brandon MB

Repro Restriction: The McKee Archives is the copyright holder for the Stuckey materials.

Storage Location: Lawrence Stuckey collection

Arrangement:

[Mr. Stuckey put two negatives and two prints in the same envelope. We have separated them, numbering the negatives PE28(1) and PE28(2), and the respective prints PE28(1a) and PE28(2a).

Images



Remnants of Great Northern Railway, Hebron, Manitoba

<http://archives.brandonu.ca/en/permalink/descriptions10007>

Part Of: RG 11 Lawrence Stuckey fonds



Creator: L.A. Stuckey
Description Level: Item
Series Number: 3.1
Item Number: 1-2002.3.1PE28(2a)
Accession Number: 1-2002
GMD: graphic
Date Range: [1971?]
Physical Description: 2 1/2" x 2 1/2"
Material Details: Photograph

History /

Biographical:

According to Stuckey and Bain (1996), "The Brandon, Saskatchewan & Hudson's Bay Railway was built and operated as a totally owned subsidiary of the Great Northern Railway. Construction commenced in late 1905 and by the end of 1905, less than a mile of track had been laid north of the boundary at St. John. In 1906, the remaining 68.6 miles to Brandon were laid and service commenced that year. During the Depression of the 1930s, traffic declined significantly and the entire branch was abandoned in 1936. Over much of the branch's length, the ties and rails were laid on the prairie without ballast and today little remains of the line apart from traces where there were cuts and bridges." (p. 18)

Stuckey, L. A., & Bain, D. M. (1996). *The Great Northern and Northern Pacific railways in Canada*. Calgary, Alberta: British Railway Modellers of North America.

Custodial History:

For custodial history see the collection level description of the Lawrence Stuckey collection.

Scope and Content:

Remnants of Great Northern Railway, Hebron, Manitoba. Visible features include the former Great Northern (BS&HB) Railway grade with tie indents, as well as concrete foundation blocks that may have been used for a coal dock.

Name Access: Remnants of Great Northern Railway, Hebron, Manitoba
Brandon, Saskatchewan & Hudson's Bay Railway
Great Northern Railway

Subject Access: railroads
railways
Great Northern Railway from Church's Ferry ND to Brandon MB

Repro Restriction: The McKee Archives is the copyright holder for the Stuckey materials.

Storage Location: Lawrence Stuckey collection

Arrangement:

[Mr. Stuckey put two negatives and two prints in the same envelope. We have separated them, numbering the negatives PE28(1) and PE28(2), and the respective prints PE28(1a) and PE28(2a).

Images



Remnants of Great Northern Railway, Hebron, Manitoba

<http://archives.brandonu.ca/en/permalink/descriptions10008>

Part Of: RG 11 Lawrence Stuckey fonds

Creator: L.A. Stuckey

Description Level: Item

Series Number: 3.1

Item Number: 1-2002.3.1PE28(1a)

Accession Number: 1-2002

GMD: graphic

Date Range: [1971?]

Physical Description: 2 1/2" x 2 1/2" (b/w)

Material Details: Photograph

History /

Biographical:

According to Stuckey and Bain (1996), "The Brandon, Saskatchewan & Hudson's Bay Railway was built and operated as a totally owned subsidiary of the Great Northern Railway.

Construction commenced in late 1905 and by the end of 1905, less than a mile of track had been laid north of the boundary at St. John. In 1906, the remaining 68.6 miles to Brandon were laid and service commenced that year. During the Depression of the 1930s, traffic declined significantly and the entire branch was abandoned in 1936. Over much of the branch's length, the ties and rails were laid on the prairie without ballast and today little remains of the line apart from traces where there were cuts and bridges." (p. 18)

Stuckey, L. A., & Bain, D. M. (1996). *The Great Northern and Northern Pacific railways in Canada*. Calgary, Alberta: British Railway Modellers of North America.

Custodial History:

For custodial history see the collection level description of the Lawrence Stuckey collection.

Scope and Content:

Remnants of Great Northern Railway, Hebron, Manitoba. Visible features include the former Great Northern (BS&HB) Railway grade with tie indents, as well as concrete foundation blocks that may have been used for a coal dock.

Name Access: Remnants of Great Northern Railway, Hebron, Manitoba
Brandon, Saskatchewan & Hudson's Bay Railway
Great Northern Railway

Subject Access: railroads
 railways
 Great Northern Railway from Church's Ferry ND to Brandon MB

Repro Restriction: The McKee Archives is the copyright holder for the Stuckey materials.

Storage Location: Lawrence Stuckey collection

Arrangement:

[Mr. Stuckey put two negatives and two prints in the same envelope. We have separated them, numbering the negatives PE28(1) and PE28(2), and the respective prints PE28(1a) and PE28(2a).

Images



Great Northern Station at Boissevain

<http://archives.brandonu.ca/en/permalink/descriptions10009>

Part Of: RG 11 Lawrence Stuckey fonds

Creator: George H. Harris

Description Level: Item

Series Number: 3.1

Item Number: 1-2002.3.1PE29

Accession Number: 1-2002

GMD: graphic

Date Range: July 17, 1938

Physical Description: 2 1/2" x 3 1/2"

Material Details: Negative

History /

Biographical:

According to Stuckey and Bain (1996), "The Brandon, Saskatchewan & Hudson's Bay Railway was built and operated as a totally owned subsidiary of the Great Northern Railway. Construction commenced in late 1905 and by the end of 1905, less than a mile of track had been laid north of the boundary at St. John. In 1906, the remaining 68.6 miles to Brandon were laid and service commenced that year. During the Depression of the 1930s, traffic declined significantly and the entire branch was abandoned in 1936. Over much of the branch's length, the ties and rails were laid on the prairie without ballast and today little remains of the line apart from traces where there were cuts and bridges." (p. 18)

Stuckey, L. A., & Bain, D. M. (1996). *The Great Northern and Northern Pacific railways in Canada*. Calgary, Alberta: British Railway Modellers of North America.

Custodial History:

For custodial history see the collection level description of the Lawrence Stuckey collection.

Scope and Content:

View of the Great Northern Railway's station at Boissevain, Manitoba.

Notes: Copy negative.

Name Access: Brandon, Saskatchewan & Hudson's Bay Railway

Great Northern Railway

Great Northern Railway stations

Subject Access: railroads

railways

railway stations

Great Northern Railway from Church's Ferry ND to Brandon MB

Repro Restriction: The McKee Archives is the copyright holder for the Stuckey materials.

Storage Location: Lawrence Stuckey collection

Images



Great Northern freight shed, Brandon

<http://archives.brandonu.ca/en/permalink/descriptions10010>

Part Of: RG 11 Lawrence Stuckey fonds

Creator: L.A. Stuckey

Description Level: Item

Series Number: 3.1

Item Number: 1-2002.3.1PE30

Accession Number: 1-2002

GMD: graphic

Date Range: November 27, 1983

Physical Description: 2 1/2" x 2 1/2"

Material Details: Negative

History /

Biographical:

According to Stuckey and Bain (1996), "The Brandon, Saskatchewan & Hudson's Bay Railway was built and operated as a totally owned subsidiary of the Great Northern Railway. Construction commenced in late 1905 and by the end of 1905, less than a mile of track had been laid north of the boundary at St. John. In 1906, the remaining 68.6 miles to Brandon were laid and service commenced that year. During the Depression of the 1930s, traffic declined significantly and the entire branch was abandoned in 1936. Over much of the branch's length, the ties and rails were laid on the prairie without ballast and today little remains of the line apart from traces where there were cuts and bridges." (p. 18)

Stuckey, L. A., & Bain, D. M. (1996). The Great Northern and Northern Pacific railways in Canada. Calgary, Alberta: British Railway Modellers of North America.

Custodial History:

For custodial history see the collection level description of the Lawrence Stuckey collection.

Scope and Content:

Great Northern Railway freight shed, Brandon, Manitoba.

Notes: Office end (foreground) razed 1984; remainder demolished January 8, 1986.

Name Access: Great Northern Freight Shed, Brandon
Brandon, Saskatchewan & Hudson's Bay Railway
Great Northern Railway

Subject Access: railroads
railways
warehouses
Great Northern Railway from Church's Ferry ND to Brandon MB

Repro Restriction: The McKee Archives is the copyright holder for the Stuckey materials.

Storage Location: Lawrence Stuckey collection

Images



Great Northern Railway Weed Burner

<http://archives.brandonu.ca/en/permalink/descriptions10011>

Part Of: RG 11 Lawrence Stuckey fonds

Description Level: Item

Series Number: 3.1
Item Number: 1-2002.3.1PE31
Accession Number: 1-2002
GMD: graphic
Date Range: July 18, 1938
Physical Description: 2" x 2 1/2"
Material Details: Negative

History /

Biographical:

According to Stuckey and Bain (1996), "The Brandon, Saskatchewan & Hudson's Bay Railway was built and operated as a totally owned subsidiary of the Great Northern Railway. Construction commenced in late 1905 and by the end of 1905, less than a mile of track had been laid north of the boundary at St. John. In 1906, the remaining 68.6 miles to Brandon were laid and service commenced that year. During the Depression of the 1930s, traffic declined significantly and the entire branch was abandoned in 1936. Over much of the branch's length, the ties and rails were laid on the prairie without ballast and today little remains of the line apart from traces where there were cuts and bridges." (p. 18)

Stuckey, L. A., & Bain, D. M. (1996). The Great Northern and Northern Pacific railways in Canada. Calgary, Alberta: British Railway Modellers of North America.

Custodial History:

For custodial history see the collection level description of the Lawrence Stuckey collection.

Scope and Content:

Great Northern Railway Weed Burner, Rugby, ND.

Notes: The Great Northern used the same unit on its line to Brandon.

Name Access: Great Northern Weed Burner
Brandon, Saskatchewan & Hudson's Bay Railway
Great Northern Railway

Subject Access: railroads
railways
weed control
Great Northern Railway from Church's Ferry ND to Brandon MB

Repro Restriction: The McKee Archives is the copyright holder for the Stuckey materials.

Storage Location: Lawrence Stuckey collection

Images





Alma mater

<http://archives.brandonu.ca/en/permalink/descriptions10094>

Part Of: Ruth and Archie MacLachlan fonds

Description Level: Item

Series Number: MG 2 2.33

Item Number: 23-2009.1

Accession Number: 23-2009

GMD: graphic

Date Range: 1932-1933

Physical Description: 2.5" x 4.5" (b/w)

Custodial History:

See fonds level description for custodial history.

Scope and Content:

Photograph of the Brandon College Building. Photo is looking west down Lorne Avenue from approximately 16th Street.

Name Access: Brandon College Building

Lorne Avenue

Subject Access: public buildings

streetscapes

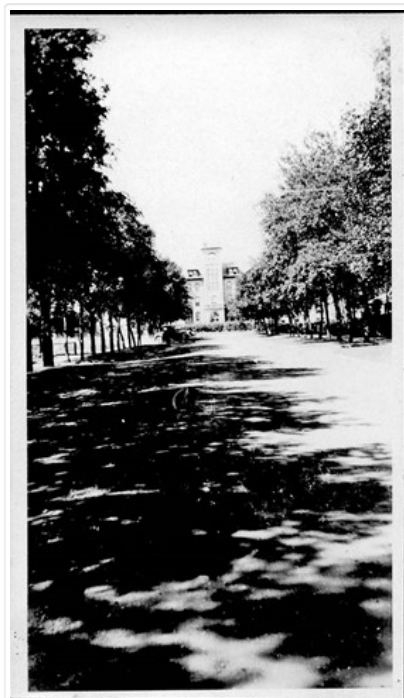
Storage Location: RG 5 photograph storage drawer

23-2009

Arrangement:

Photograph is from page one of Ruth MacLachlan's scrapbook.

Images





St. Paul's Presbyterian Church interior

<http://archives.brandonu.ca/en/permalink/descriptions10117>

Part Of: RG 12 Brandon and Area Photograph Collection

Description Level: Item

Series Number: 2

Item Number: BAPC 2.4

GMD: graphic

Date Range: [1900-1901]

Physical Description: 4" x 6" (b/w)

History /

Biographical:

St. Paul's Presbyterian Church, which became St. Paul's United Church, and then Central United Church was located at 327 8th Street in Brandon, MB. The original church was destroyed by fire in 1986.

Scope and Content:

Photograph shows the interior of the St. Paul's Presbyterian Church in Brandon, MB.

Notes: History/Bio information provided by Jim Stettner, Organ Historical Society Database (2022).

Name Access: St. Paul's Presbyterian Church

Subject Access: Church buildings

churches

public buildings

Storage Location: BAPC photograph drawer

Images





Fire at the Royal North-West Mounted Police horse barns

<http://archives.brandonu.ca/en/permalink/descriptions10129>

Part Of: RG 12 Brandon and Area Photograph Collection

Description Level: Item

Series Number: 2

Item Number: BAPC 2.16

GMD: graphic

Date Range: September 29, 1919

Physical Description: 8" x 10" (b/w)

Material Details: Copy

Custodial History:

Donated by Ron Brown.

Scope and Content:

Photograph of the Royal North-West Mounted Police (RNWMP) horse barns on fire. The barns were located in the Winter Fair Building on the Fair Grounds.

Name Access: Winter Fair Building

Fair grounds

Royal North-West Mounted Police

Subject Access: fires

agricultrual buildings

barns

Storage Location: BAPC photograph drawer

Images





Fire at the Royal North-West Mounted Police horse barns

<http://archives.brandonu.ca/en/permalink/descriptions10130>

Part Of: RG 12 Brandon and Area Photograph Collection

Description Level: Item

Series Number: 2

Item Number: BAPC 2.17

GMD: graphic

Date Range: September 29, 1919

Physical Description: 8" x 10" (b/w)

Material Details: Copy

Custodial History:

Donated by Ron Brown.

Scope and Content:

Photograph of spectators gathered to watch the Royal North-West Mounted Police (RNWMP) horse barns on fire. The barns were located in the Winter Fair Building on the Fair Grounds.

Name Access: Winter Fair Building

Fair grounds

Royal North-West Mounted Police

Subject Access: fires

agricultrual buildings

barns

Storage Location: BAPC photograph drawer

Images





Fire at the Royal North-West Mounted Police horse barns

<http://archives.brandonu.ca/en/permalink/descriptions10131>

Part Of: RG 12 Brandon and Area Photograph Collection

Description Level: Item

Series Number: 2

Item Number: BAPC 2.18

GMD: graphic

Date Range: September 29, 1919

Physical Description: 8" x 10" (b/w)

Material Details: Copy

Custodial History:

Donated by Ron Brown.

Scope and Content:

Photograph of the Royal North-West Mounted Police (RNWMP) horse barns on fire. The barns were located in the Winter Fair Building on the Fair Grounds.

Name Access: Winter Fair Building

Fair grounds

Royal North-West Mounted Police

Subject Access: fires

agricultrual buildings

barns

Storage Location: BAPC photograph drawer

Images





Royal North-West Mounted Police horse barns

<http://archives.brandonu.ca/en/permalink/descriptions10132>

Part Of: RG 12 Brandon and Area Photograph Collection

Description Level: Item

Series Number: 2

Item Number: BAPC 2.20

GMD: graphic

Date Range: 1919

Physical Description: 8" x 10" (b/w)

Material Details: Copy

Custodial History:

Donated by Ron Brown.

Scope and Content:

Photograph of the Royal North-West Mounted Police (RNWMP) horse barns covered in snow after the fire in 1919.

Name Access: Royal North-West Mounted Police

Subject Access: fires
agricultural buildings
barns

Storage Location: BAPC photograph drawer

Images





Brandon Armoury

<http://archives.brandonu.ca/en/permalink/descriptions10137>

Part Of: RG 12 Brandon and Area Photograph Collection

Description Level: Item

Series Number: 2

Item Number: BAPC 2.25

GMD: graphic

Date Range: [after 1937]

Physical Description: 4" x 2.5" (b/w)

History /

Biographical:

The Brandon Armoury was built in 1907. The extension on the southside was built in 1937.

Custodial History:

The photograph was donated to the Archives by Cy Kenny in 2005.

Scope and Content:

Photograph is looking northwest from the east side of 11th Street. It shows the back and east side of the Brandon Armoury, which is located on the at 1116 Victoria Avenue.

Name Access: Brandon Armoury

Victoria Avenue

11th Street

Subject Access: public buildings

armouries

Storage Location: BAPC photograph drawer

Images

