

# S. J. McKee Archives



## Ruby Miles collection

<http://archives.brandonu.ca/en/permalink/descriptions4844>

Part Of: RG 5 Western Manitoba Manuscript Collection  
Description Level: Collection  
Accession Number: 14-2003  
GMD: multiple media  
Date Range: 1910-2003; predominant 1920-1945  
Physical Description: 60 photographs (b/w) and 18 negatives; 3 cm textual records  
History /  
Biographical:

Rubina Isabella Miles (née McGregor) was born October 9th, 1909, in Maple Creek, Saskatchewan, the only child of Kate (née Rowe) and William McGregor. Her father, William Thom McGregor was a native of Scotland who, before coming to Canada, travelled to Australia and New Zealand, and served in the Boer War. Ruby Miles and her parents migrated to Australia in 1921. In 1925, the family moved to Papua New Guinea where Mr. McGregor was employed as Head Stockman on the Giligili Estate, part of the Commonwealth Copra Company. The family returned to Canada in 1929. In 1940, Ruby married Leonard "Len" Miles, a native of Moose Jaw, Saskatchewan. Following the Second World War, they settled in Brandon, Manitoba. Ruby spent her adult life as a homemaker. She died in April 2003.

### Custodial History:

The records came into Ruby Miles' possession through her husband (correspondence while he was overseas) and through the death of various family members. Following the death of Ruby Miles, the collection was donated to the S.J. McKee Archives by Errol Black, the executor of her estate.

### Scope and Content:

Collection includes c. 15 letters from Kate McGregor, to her parents Mr. and Mrs. A.A. Rowe of Brandon, Manitoba. The letters were written in the years 1925-1929, when Mrs. McGregor and her family were living in Papua New Guinea. Collection also includes photographs and photographic negatives containing images of the Giligili Estate in New Guinea. Collection contains correspondence with Len Miles during his service overseas in the Second World War, as well as Len Miles' service record, death certificate and various memorabilia from his time in military service. Finally, the collection includes various news clippings, documents and correspondence received or retained by Ruby Miles.

Notes: CAIN No. 202595. Description by Mike White.

Name Access: Kate McGregor  
 Ruby Miles  
 Len Miles  
 A.A.Rowe  
 Papua New Guinea  
 Brandon  
 Manitoba  
 Giligili Estate  
 Commonwealth Copra Company Ltd

Subject Access: emigration  
 Second World War  
 plantation agriculture  
 Boer war

Storage Location: 2003 accessions

Storage Range: 2003 accessions



## Maureen Johnson collection

<http://archives.brandonu.ca/en/permalink/descriptions9012>

Part Of: RG 5 Western Manitoba Manuscript Collection

Description Level: Collection

Accession Number: 10-2009, 14-2009

GMD: multiple media

Date Range: 1908-c.1965; predominant 1915-1921

Physical Description: 32 photographs  
 1 sound recording  
 2 cm textual records

Material Details: 17 photographs are digital records

History /  
 Biographical:

Maureen Johnson (nee Sills) was born in Brandon, MB in 1936 and grew up in western Manitoba. She spent three years in Ethiopia (1958-1961) and two years in Houston, Texas before taking up permanent residence in Winnipeg, MB. She attended Brandon College in 1953-1954, living in the Tower Room of Clark Hall.

From 1960-1979, Johnson raised her family, volunteered in the St. Vital community and was Secretary to the Manitoba Schools Science Symposium (1973-1977). She worked in the Office of the President at the University of Manitoba from 1980 to 1996.

Johnson is a visual artist and photographer, and is a member of the Winnipeg Sketch Club, Manitoba Society of Artists and Winnipeg South Photo Club. Her work is on permanent display at Medea Gallery ([www.medeagallery.ca](http://www.medeagallery.ca)) where she has been a member since 1985. She also has work in the Rental Program at the Winnipeg Art Gallery.

For biographical information on Sarah Persis Darrach see RG 1 Brandon College fonds, Series 9: Clark Hall women's residence.

#### Custodial History:

The original photographs in accession 10-2009 are in the custody of Maureen Johnson in Winnipeg, MB. Copies were digitally scanned by Johnson and sent to the Archives in March 2009. The 1921 photographs of Brandon College students were given to Johnson by Eileen McKenzie, her aunt, who attended Brandon College at that time. The photos of Sarah Persis Darrach (Johnson's great-aunt and maternal grandmother's sister) are from her family albums.

All of the records in accession 14-2009, except for the 1920 Quill and the Clark Hall Rules 1912, were collected by Johnson during her time at Brandon College. The Quill issue belonged to Johnson's aunt Eileen McKenzie, a student at Brandon College in the early 1920s. The records were in Johnson's possession at her home until their donation to the McKee Archives in May 2009.

#### Scope and Content:

Accession 10-2009 consists of seventeen digital photographs. Seven photographs are of Sarah Persis Darrach (nee Johnson), taken primarily during her time as a nursing sister during World War I. Two photographs are of Eileen McKenzie. The remaining photographs depict students and student activities at Brandon College in the early 1920s.

Accession 14-2009 consists of a copy of the sound recording and program for Mr. College Spirit, a musical comedy presented by the Brandon College Literary Board and written by James Struthers and Kenneth Gunning. Accession also includes fifteen photographs from 1953-1954, when Johnson attended Brandon College. Subjects include: Freshie King and Queen; Graduation Banquets (1955, 1956); senior and lady sticks; Jim Casey Trophy; Grand March 1954; Capettes basketball team 1954; Glee Club 1953; Variety Night - Men's Chorus; Caps Football Team; Caps Hockey Team 1954; Cheerleaders 1954; Caps Basketball 1954; and Touques.

Textual records include graduation banquet and commencement programs, news clippings, programs for Variety Night and Be Your Age, a list of football cheers and a copy of the Fall Number of the 1920 Quill. Textual records also include two color photocopies: Clark Hall Rules 1912 and Johnson's Arts and Science Departments, Brandon College Registration card.

Notes:	History/Bio information and Custodial History provided by Maureen Johnson (April 2009). A review of the play, written by Kay Rowe, appeared in the March 6, 1953 issue of the Quill.
Name Access:	Sarah Persis Darrach Eileen McKenzie Brandon College Brandon General Hospital
Subject Access:	World War I First World War student activities snowshoeing
Location Original:	Maureen Johnson (Winnipeg)
Storage Location:	T:\Library\Archives\Shared.02\photos\2009 Accessions
Related Material:	RG 1 Brandon College fonds, Series 9: Clark Hall women's residence MG 1 1.9 Sarah Persis Darrach fonds MG 2 2.4 James Struthers fonds



## Hubert Weidenhamer collection

<http://archives.brandonu.ca/en/permalink/descriptions12347>

Part Of: RG 5 Western Manitoba Manuscript Collection

Description Level: Collection

Accession Number: 6-2011

GMD: multiple media

Date Range: April 11, 1943 - July 4, 1945

Physical Description: 4 cm textual records (48 letters)  
2 photographs  
press clippings and several facimiles

Physical Condition: Good

History /

Biographical:

Hubert Clayton Weidenhamer was born near Dand, Manitoba in 1926. He was raised in Dand and attended school in the Dand Consolidated School District. Weidenhamer enlisted in the Canadian Army in 1943. He became a member of the Princess Patricia's Canadian Light Infantry. Following training in Canada and England Weidenhamer was sent to Italy. He was badly wounded in battle in mid-September and died of his injuries in November 1944 at age 21. He was buried in the Ancona Military Cemetery, Ancona Italy.

Custodial History:

These records were in the possession of Bea Chapin (née Weidenhamer) following their creation in the 1940s until they were donated to the S. J. McKee Archives in January 2011.

Scope and Content:

Collection consists of correspondence from Hubert Clayton Weidenhamer to his sister Bea. The letters begin in the spring of 1943. Weidenhamer had enlisted in the Canadian Army in January 1943. His letters detail his induction into military life in Fort Garry, Winnipeg and his training experience in Canada, principally at Camp Ipperwash, Lambton County, Ontario. He relates his experience of travels on leave to Detroit. Weidenhamer left Canada from Halifax in late 1943 and arrived in Great Britain in December for additional military training. In England, maintaining his morale, waiting for deployment, and coming to terms with British currency were challenges. Transferred to the Princess Patricia's Canadian Light Infantry, Weidenhamer was deployed to Italy in March 1944. The letters dating from March 1944 to September relate in oblique fashion his experience of military life on the Italian frontier as the Canadian Army fought its way north - "hard fighting" - and the impact of the war on Italian cities and the countryside. He was "proud" of his conduct in action. Weidenhamer's last letter is dated September 11, 1944.

Collection also includes correspondence on Weidenhamer's behalf from his military Chaplain; two press clippings dealing with his military career, and several facimiles of telegrams and correspondence from the Canadian government officials related to Weidenhamer's death and burial in Italy.

Notes: Description by Tom Mitchell.

Name Access: Princess Patricia's Canadian Light Infantry  
Camp Ipperwash  
Princess Pat's

Subject Access:       World War II  
                              Second World War  
                              military service  
                              military personnel  
                              Italian theatre  
Storage Location:     2011 accessions



## Audrey Silvius collection

<http://archives.brandonu.ca/en/permalink/descriptions4841>

Part Of:               RG 5 Western Manitoba Manuscript Collection  
Description Level:   Collection  
Accession Number:   21-2000  
GMD:                 multiple media  
Date Range:          1959-1988; predominant 1963-1974  
Physical Description: 19 cm textual records; 4 photographs; 1 drawing

### History /

#### Biographical:

Born on February 10, 1924, in Elgin, Manitoba, Audrey Ellen Silvius (nee Honeyman) was raised in Fairfax, Manitoba on the Honeyman homestead. In 1964, she received her Indian name, Blue Star. Silvius completed her high school education in Fairfax before moving to Winnipeg in 1943, to earn her Nursing degree from Grace Hospital. She later completed her post-graduate degree in Psychiatric Nursing at the Brandon Mental Health Centre. Married to Merritt W. Silvius, Audrey Silvius raised four children, David, Kay, Lorna (Downie) and Gail (Campos) while working in her chosen field. In addition to her family and her career, she was also involved with the Brandon Council of Women and the United Church in Brandon. Silvius was the first executive director of the Brandon Indian-Metis Friendship Centre, a founding member of the local branches of the Marquis Project and Amnesty International and initiated a project called Tools for Peace. She was also involved in various other peace and human rights organizations. In 1987, she received the Order of the Buffalo Hunt from the Province of Manitoba in recognition of her work relating to women's issues. In 1992, she was awarded a Confederation medal for community service.

#### Custodial History:

The records found within the collection were collected by Audrey Silvius from a number of people, including Jean Halliday, Grace Godmaire and Norma Walmsley, involved in various projects with her throughout the years. Prior to their donation to the McKee Archives at Brandon University in October and November 2000, the records were stored at Mrs. Silvius' home.

#### Scope and Content:

Collection consists of meeting minutes, agendas, speeches, correspondence, newsletters, brochures, written publications and newspaper clippings. Four photographs and one pencil drawing are also included within the collection.

The records deal with the creation, activities, and history of the Brandon Indian-Metis Friendship Centre, as well as the activities of its Board of Directors. In addition, materials located within the collection can be divided into two areas: (1) those that relate to various organizations associated with the Friendship Centre itself, such as the Council of Christians and Jews and the Brandon Council of Women; (2) materials related to projects of important individuals involved with the Friendship Centre, such as the South Western Manitoba Recreation Council and the 4F Club of Minnedosa. Other records deal with general aboriginal issues in Canada during the time frame of the Audrey Silvius collection.

Notes: CAIN No. 202607. Description by Christy Henry (2000).

Subject Access: Council of Christians and Jews  
Brandon Council of Women  
4F Club  
Brandon Indian-Metis Friendship Centre  
cross cultural relations  
Aboriginal issues  
community development

Storage Location: 2000 accessions

Storage Range: 2000 accessions

#### Arrangement:

The collection is divided into ten (10) series:

1. The Brandon Indian-Metis Friendship Centre
2. The Scout – Friendship Centre newsletter
3. The Brandon Council of Women
4. Council of Christians and Jews
5. Aboriginal Glee Club/Dancers
6. The South Western Manitoba Recreation Council
7. 4F Club of Minnedosa
8. Miscellaneous Publications related to Aboriginal Issues
9. Miscellaneous Newspaper Clippings related to Aboriginal Issues
10. Photographs and pencil drawing



## Crepeelee site 2003 - field journals

<http://archives.brandonu.ca/en/permalink/descriptions10217>

Part Of: RG 7 Beverley Nicholson fonds  
Description Level: sub sub sub series  
Series Number: 1.2.1.2  
Accession Number: 1-2010  
GMD: multiple media  
Date Range: 2003  
Material Details: Field journals have been scanned in multi-page PDF files.

### History /

#### Biographical:

The Crepeelee site was excavated in 2003 as Crepeelee 3. Standard archaeological methods were used to excavate the units. Excavation units were initially numbered as units 10, 11, 12 & 13. These numbers have been changed on the catalogue to XU 110 – 113, due to duplication in 2005. Corresponding documents have been changed to reflect the amended excavation unit numbers, however the field journals may contain the initial numbers.

#### Scope and Content:

Record of daily observations at the site including: excavation methods, items recovered, features, local environment and weather.

Name Access: Crepeelee site 2003 - field journals  
Subject Access: Archaeology  
Crepeelee locale  
Crepeelee site DiMe-29  
Crepeelee site 2003



## Crepeelee site 2008 - field journals

<http://archives.brandonu.ca/en/permalink/descriptions11808>

Part Of: RG 7 Beverley Nicholson fonds  
Description Level: sub sub sub series  
Series Number: 1.2.5.2  
Accession Number: 1-2010  
GMD: multiple media  
Date Range: 2007  
Material Details: Field journals have been scanned in multi-page PDF files.

### History /

#### Biographical:

The Crepeelee site was identified from the results of the Casselman survey and excavated in 2003, 2004, 2005 and 2007.

In 2008 a small crew under the direction of Bev Nicholson returned to the site to gather further samples and verify profiles. Three units (XU 50, 51 and 52) were excavated. As well the Graham site 2008 was also excavated.

The field journals contain information about both the Crepeelee and Graham sites.

#### Scope and Content:

Record of daily observations at the site including: excavation methods, items recovered, features, local environment and weather.

Name Access: Crepeelee site 2008 - field journals  
Subject Access: Archaeology  
Crepeelee locale  
Crepeelee site DiMe-29  
Crepeelee site 2008





## Sarah site 2003 - field journals

<http://archives.brandonu.ca/en/permalink/descriptions11831>

Part Of: RG 7 Beverley Nicholson fonds  
Description Level: sub sub sub series  
Series Number: 1.3.1.2  
Accession Number: 1-2010  
GMD: multiple media  
Date Range: 2003  
Material Details: Field journals have been scanned in multi-page PDF files.

### History /

#### Biographical:

The Sarah site was chosen for excavation based on the results of the Casselman survey. The survey recovered significant amounts of faunal remains, some ceramics and lithics from the test pits. Excavations took place in 2003 at Crepeelee West (Units 1-5) and Crepeelee East (Units 6-9). The site was subsequently renamed the Sarah site DiMe-28.

Field journals from 2003 contain notes concerning the Casselman survey, Crepeelee and Sarah site.

#### Scope and Content:

Record of daily observations at the site including: excavation methods, items recovered, features, local environment and weather.

Name Access: Sarah 2003 - field journals  
Subject Access: Archaeology  
Crepeelee locale  
Sarah site DiMe-28  
Sarah 2003 - field journals



## Graham site 2004 - field journals

<http://archives.brandonu.ca/en/permalink/descriptions11890>

Part Of: RG 7 Beverley Nicholson fonds  
Description Level: sub sub sub series  
Series Number: 1.4.1.2  
Accession Number: 1-2010  
GMD: multiple media  
Date Range: 2004  
Material Details: Field journals have been scanned in multi-page PDF files.

### History /

#### Biographical:

Graham units 9 and 14 were excavated with the Crepeele site in 2004 and were reassigned to the Graham site DiMe-30 keeping the same unit numbers.

Field journals from 2004 contain notes concerning the Graham, Sarah and Atkinson sites. The relevant page numbers are noted.

#### Scope and Content:

Record of daily observations at the site including: excavation methods, items recovered, features, local environment and weather.

Name Access: Graham site 2004 - field journals  
Subject Access: Archaeology  
Crepeele locale  
Graham site DiMe-30  
Graham site 2004



## Graham site 2005 - field journals

<http://archives.brandonu.ca/en/permalink/descriptions11906>

Part Of: RG 7 Beverley Nicholson fonds  
Description Level: sub sub sub series  
Series Number: 1.4.2.2  
Accession Number: 1-2010  
GMD: multiple media  
Date Range: 2005  
Material Details: Field journals have been scanned in multi-page PDF files.

### History /

#### Biographical:

The Graham site is located south of the Crepeele site. Due to the close proximity the Graham and Crepeele sites have both been the site of the Brandon University Archaeological Field School.

In 2005 both sites were excavated as part of the Field School experience instructed by Denise Ens with teaching assistant James Graham. Six units (XU 1-6) were excavated at the Graham site.

Field journals from 2005 contain notes concerning the Graham and Crepeele sites.

#### Scope and Content:

Record of daily observations at the site including: excavation methods, items recovered, features, local environment and weather.

Name Access: Graham site 2005 - field journals  
Subject Access: Archaeology  
Crepeele locale  
Graham site DiMe-30  
Graham site 2005



## Graham site 2006 - field journals

<http://archives.brandonu.ca/en/permalink/descriptions11924>

Part Of: RG 7 Beverley Nicholson fonds  
Description Level: sub sub sub series  
Series Number: 1.4.3.2  
Accession Number: 1-2010  
GMD: multiple media  
Date Range: 2006  
Material Details: Field journals have been scanned in multi-page PDF files.

### History /

#### Biographical:

In 2006 a small Brandon University Archaeology Field School was conducted at the Graham site. Four excavations (XU 7, 8 15 & 16) were completed with Denise Ens Instructor and Jessica MacKenzie Teaching Assistant.

Field journals from 2006 contain notes concerning the Graham and Crepeele sites.

#### Scope and Content:

Record of daily observations at the site including: excavation methods, items recovered, features, local environment and weather.

Name Access: Graham site 2006 - field journals  
Subject Access: Archaeology  
Crepeele locale  
Graham site DiMe-30  
Graham site 2006



## Graham site 2008 - field journals

<http://archives.brandonu.ca/en/permalink/descriptions11959>

Part Of: RG 7 Beverley Nicholson fonds  
Description Level: sub sub sub series  
Series Number: 1.4.4.2  
Accession Number: 1-2010  
GMD: multiple media  
Date Range: 2008  
Material Details: Field journals have been scanned in multi-page PDF files.

### History /

#### Biographical:

In 2008 Brandon University Archaeology returned to the Crepeele locale to conduct further testing at the Graham and Crepeele sites. Four units (XU 47-49 & 53) were excavated at Graham 2008 in order to collect samples and add further data to previous excavations. The usual excavation methodology was employed.

The small crew was directed by Bev Nicholson with Crew of Bill Foy, Andrew Lints & Kim Harrison

Recoveries included faunal (mostly bison), lithics and ceramics.

#### Scope and Content:

Record of daily observations at the site including: excavation methods, items recovered, features, local environment and weather.

Name Access: Graham site 2008 - field journals  
Subject Access: Archaeology  
Crepeele locale  
Graham site DiMe-30  
Graham site 2008



## Crepeelee site 2005 - field journals

<http://archives.brandonu.ca/en/permalink/descriptions11727>

Part Of: RG 7 Beverley Nicholson fonds  
Description Level: sub sub sub series  
Series Number: 1.2.3.2  
Accession Number: 1-2010  
GMD: multiple media  
Date Range: 2005  
Material Details: Field journals have been scanned in multi-page PDF files.

### History /

#### Biographical:

In 2005 the Brandon University Field School was held at both the Crepeelee and Graham sites in the Crepeelee locale.

At the Crepeelee site nine units were excavated (XU10-16 & 20, 21). Units 20 & 21 were referred to as Meadow in the notes but are considered part of the larger site based on recoveries.

Denise Ens instructed the school and James Graham was teaching assistant. Field journals were kept by both instructors.

#### Scope and Content:

Record of daily observations at the site including: excavation methods, items recovered, features, local environment and weather.

Name Access: Crepeelee site 2005 - field journals  
Subject Access: Archaeology  
Crepeelee locale  
Crepeelee site DiMe-29  
Crepeelee site 2005



## Crepeelee site 2007 - field journals

<http://archives.brandonu.ca/en/permalink/descriptions11774>

Part Of: RG 7 Beverley Nicholson fonds  
Description Level: sub sub sub series  
Series Number: 1.2.4.2  
Accession Number: 1-2010  
GMD: multiple media  
Date Range: 2007  
Material Details: Field journals have been scanned in multi-page PDF files.

### History /

#### Biographical:

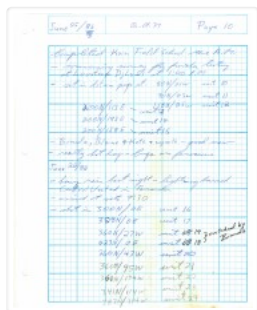
In 2007 the Brandon University Archaeology Field School was held at the Crepeelee site in the Crepeelee locale. Denise Ens instructed the school with Kate Decter & Jessica MacKenzie assistants.

Seventeen units were excavated XU30 - 46. Faunal (animal bone), lithics, fire cracked rock, diagnostic lithics and ceramics were recovered from the site. There are over 3050 records in the catalogue.

#### Scope and Content:

Record of daily observations at the site including: excavation methods, items recovered, features, local environment and weather.

Name Access: Crepeelee site 2007 - field journals  
Subject Access: Archaeology  
Crepeelee locale  
Crepeelee site DiMe-29  
Crepeelee site 2007

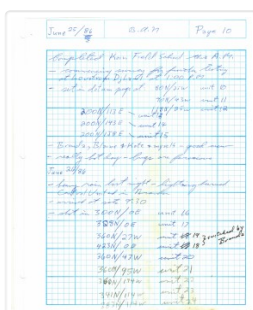


## Lovstrom survey 1986 - Nicholson field journal

<http://archives.brandonu.ca/en/permalink/descriptions12539>

Part Of:	RG 7 Beverley Nicholson fonds
Creator:	Bev Nicholson
Description Level:	File
Series Number:	3.1.2.2
File Number:	1
Accession Number:	1-2010
GMD:	multiple media
Date Range:	1986
Physical Description:	6 pages
Material Details:	Field journals have been scanned in multi-page PDF files.
Scope and Content:	<p>Record of daily observations at the site including: excavation methods, items recovered, features, local environment and weather.</p>
Name Access:	Lovstrom survey 1986 - Nicholson field journal
Subject Access:	Archaeology Lovstrom locale Lovstrom survey 1986 Lovstrom survey 1986 - Nicholson field journal

### Documents



3.1.2.2.1\_Nicholson.pdf



Read PDF



Download PDF





Part Of: RG 7 Beverley Nicholson fonds

Description Level: File

Series Number: 3.2.1.2

File Number: 1

Accession Number: 1-2010

GMD: multiple media

Date Range: 1987

Physical Description: 8 pages

Material Details: Field journals have been scanned in multi-page PDF files.

History /

Biographical:

Bev Nicholson was director of the project and his field journal relates to all the Blocks excavated at the locale.

Scope and Content:

Record of daily observations at the site including: excavation methods, items recovered, features, local environment and weather.

Name Access: Lovstrom Block A - Bev Nicholson field journal

Subject Access: Archaeology

Lovstrom locale

Lovstrom Block A

Lovstrom Block A - Bev Nicholson field journal

## 3.2.1.2.1\_Nicholson.pdf

 Read PDF Download PDF

<http://archives.brandonu.ca/en/permalink/descriptions4843>

Part Of: RG 5 Western Manitoba Manuscript Collection

Description Level: Collection  
Accession Number: 17-2002  
GMD: multiple media  
Date Range: 1970-1977; predominant 1975-1976  
Physical Description: 5 m textual records; approx. 30 photographs

History /

Biographical:

Reg Forbes was born September 16, 1924. He and his wife Clara have two children, Bob and Faye. Forbes served in the Royal Canadian Air Force as a Navigator during World War II. From 1945-1949, he attended the University of Manitoba where he received his B.Sc.A. While working as Village Councillor and as Secretary-Treasurer for the Pilot Mound Hospital, Forbes initiated the "Save the Soil Campaign," a soil conservation programme that became province-wide, between 1952-1962.

From 1956-1975, Forbes was the Principal of the Agricultural Extension Centre in Brandon, where he reorganized the Adult Education Centre into the Agricultural Extension Centre. During this period, Forbes was a founding member of the West-Man Regional Development Corporation and a founder of the Manitoba Committee on Rural Leadership. He was also instrumental in the amalgamation of the Royal Manitoba Winter Fair and the Provincial Exhibition and in the resulting construction of the Keystone Centre.

From 1975-1977 Forbes was a Commissioner for the Grain Handling and Transportation Commission (Hall Commission/GHTC). Following his work with the Commission, Forbes was employed as the General Manager of the Provincial Exhibition of Manitoba (1977-1979), the Director of the Grain Handling & Transportation Section of the Manitoba Department of Agriculture (1979-1983), the Industrial Commissioner for the Brandon Industrial Commission (1983-1986), and as the Westarc Group Inc. Project Director for delivery under contract of Canadian Rural Transition Programme in Manitoba.

Forbes also held a number of voluntary and elected positions, such as Long-term Director and President of the Royal Manitoba Winter Fair and of the Provincial Exhibition of Manitoba. In 1970-1971, he was the President of the Agricultural Institute of Canada, and from 1978-1981, Forbes was the first chairman of the Agricultural Advisory Committee of the Canadian Broadcasting Corporation. He was also a member of the Canada West Foundation Board, the Brandon University Board of Governors (1974-1976), and the Federal-Provincial Transportation and Industrial Development Advisory Committee (TIDAC). Forbes is also a Fellow of the Agricultural Institute of Canada. In 1977, he received the Jubilee Medal and in 1987, he was given the Distinguished Agrologist Award by the Manitoba Institute of Agrologists.

Custodial History:

Reg Forbes donated his working collection of briefs, correspondence and other documents relating to his work as a commissioner of the Grain Handling and Transportation Committee (GHTC) to the McKee Archives c. 1985.

Scope and Content:

The majority of the collection consists of records created and received by the Royal Commission on Grain Handling and Transportation (GHTC). Included are documents detailing numerous hearings from all four Western provinces. In addition to the GHTC hearings, there are also a number of documents given to the GHTC as reference material. These include information on the Snavelly Commission, documents for the province of Alberta, various reports, the Prairie Regional Studies in Economic Geography (No. 1-27) and General Information. The collection also includes two maps given to the GHTC.

Notes: CAIN No. 202599. Description by Christy Henry.

Subject Access: Justice Hall  
Canadian Pacific Railway  
Canadian National Railway  
Grains Group  
Royal Commissions  
Agriculture  
Grain Trade  
Railroad Transportation

Storage Location: 2002 accessions

Storage Range: 2002 accessions



## Crepeele site 2008 - Bev Nicholson field journal

<http://archives.brandonu.ca/en/permalink/descriptions11809>

Part Of: RG 7 Beverley Nicholson fonds

Description Level: sub sub sub series

Series Number: 1.2.5.2

File Number: 1

Accession Number: 1-2010

GMD: multiple media

Date Range: 2008

Physical Description: 6 pages

Material Details: Field journals have been scanned in multi-page PDF files.

History /  
Biographical:

The Crepeele site was identified from the results of the Casselman survey and excavated in 2003, 2004, 2005 and 2007.

In 2008 a small crew under the direction of Bev Nicholson returned to the site to gather further samples and verify profiles. Three units (XU 50, 51 and 52) were excavated. As well the Graham site 2008 was also excavated.

The field journals contain information about both the Crepeele and Graham sites 2008.

### Scope and Content:

Record of daily observations at the site including: excavation methods, items recovered, features, local environment and weather.

Name Access: Crepeele site 2008 - Bev Nicholson field journal

Subject Access: Archaeology  
Crepeele locale  
Crepeele site DiMe-29  
Crepeele site 2008

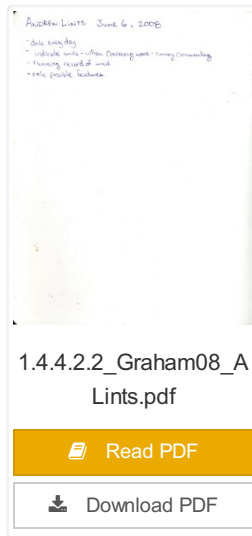
### Documents



Subject Access: Archaeology  
Crepeele locale  
Graham site DiMe-30  
Graham site 2008

## Documents

---



1.4.4.2.2\_Graham08\_A  
Lints.pdf

 Read PDF

 Download PDF



## Crepeele site 2008 - Kim Harrison field journal

<http://archives.brandonu.ca/en/permalink/descriptions11811>

Part Of:	RG 7 Beverley Nicholson fonds
Description Level:	File
Series Number:	1.2.5.2
File Number:	3
Accession Number:	1-2010
GMD:	multiple media
Date Range:	2008
Physical Description:	10 pages
Material Details:	Field journals have been scanned in multi-page PDF files.

## History /

### Biographical:

In 2008 Brandon University Archaeology returned to the Crepeelee locale to conduct further testing at the Graham and Crepeelee sites. Four units (XU 47-49 & 53) were excavated at Graham 2008 in order to collect samples and add further data to previous excavations. The usual excavation methodology was employed.

The small crew was directed by Bev Nicholson with Crew of Bill Foy, Andrew Lints & Kim Harrison

Recoveries included faunal (mostly bison), lithics and ceramics.

The field journals contain information about both the Crepeelee and Graham sites 2008.

### Scope and Content:

Record of daily observations at the site including: excavation methods, items recovered, features, local environment and weather.

Name Access: Crepeelee site 2008 - Kim Harrison field journal

Subject Access: Archaeology  
Crepeelee locale  
Crepeelee site DiMe-29  
Crepeelee site 2008

## Documents

---



## Crepeelee site 2008 - Bill Foy field journal

<http://archives.brandonu.ca/en/permalink/descriptions11812>

Part Of: RG 7 Beverley Nicholson fonds

Description Level: sub sub sub series

Series Number: 1.2.5.2

File Number: 4



Accession Number: 1-2010

GMD: multiple media

Date Range: 2008

Physical Description: 20 pages

Material Details: Field journals have been scanned in multi-page PDF files.

History /

Biographical:

The Crepeele site was identified from the results of the Casselman survey and excavated in 2003, 2004, 2005 and 2007.

In 2008 a small crew under the direction of Bev Nicholson returned to the site to gather further samples and verify profiles. Three units (XU 50, 51 and 52) were excavated. As well the Graham site 2008 was also excavated.

The field journals contain information about both the Crepeele and Graham sites 2008.

Scope and Content:

Record of daily observations at the site including: excavation methods, items recovered, features, local environment and weather.

Name Access: Crepeele site 2008 - Bill Foy field journal

Subject Access: Archaeology  
Crepeele locale  
Crepeele site DiMe-29  
Crepeele site 2008

## Documents

---



1.2.5.2.4\_C08\_BFoy.pdf

 Read PDF

 Download PDF