

S. J. McKee Archives



Andrew Kelly

<http://archives.brandonu.ca/en/permalink/descriptions9034>

Part Of: RG 11 Lawrence Stuckey fonds

Description Level: Item

Series Number: 3.1

Item Number: 1-2002.3.1A6

Accession Number: 1-2002

GMD: graphic

Date Range: [189-?]

Physical Description: 3 1/2" x 5"

Material Details: Negative

History /

Biographical:

Kelly served as mayor from 1890-1891.

Custodial History:

For custodial history see the collection level description of the Lawrence Stuckey collection.

Scope and Content:

Item is a portrait of Brandon mayor Andrew Kelly.

Name Access: Andrew Kelly

Subject Access: government

political figures

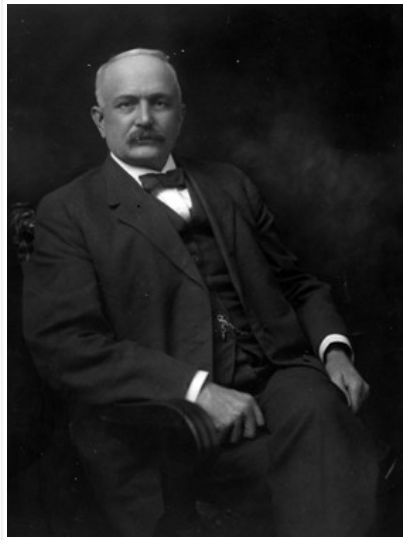
mayors

mayors of Brandon

Repro Restriction: The McKee Archives is the copyright holder for the Stuckey materials.

Storage Location: Lawrence Stuckey collection

Images





Andrew Mutter interview

<http://archives.brandonu.ca/en/permalink/descriptions14509>

Part Of: Westman Oral History collection

Description Level: Item

Item Number: OH161.Mut

Accession Number: 35-1998

GMD: sound recordings

Date Range: November 9, 1982

Physical Description: 1 audio cassette [00:39:44]

History /

Biographical:

Andrew Frederick "Fred" Mutter was born on January 7, 1913 in Brandon, MB. He was educated in Brandon, including at Brandon College. From 1942-1945, Fred served with the RCAF overseas. Fred returned to Brandon after the war, where he joined the family run grocery store, Mutter Brothers. He continued to operate the business until deciding to close in April 1975. In 1986, the contents of the store were donated by the Assiniboine Historical Society to the Daly House Museum. Fred never married. Fred Mutter died on July 3, 1984 in Brandon, MB. He is buried at Brandon Municipal Cemetery.

Custodial History:

As part of the Westman Oral History Collection, this collection was accessioned by the McKee Archives in 1998. The original tapes from the Westman Oral History project were deposited in the Brandon Public Library. Copies of these originals were made by Margaret Pollex of the Brandon University Language Lab at the request of Eileen McFadden, University Archivist in the early 1990s. These copies compose the collection held in the McKee Archives.

Scope and Content:

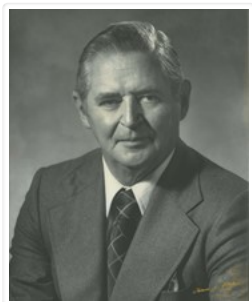
Item is an audiocassette tape containing an interview with Fred Mutter about the history of Mutter Brothers store. The interviewer is Hazel Rose.

Notes: History/bio information from the records and Mutter's obituary.
Description by Christy Henry.

Language Note: English

Conservation: Preservation copy made 2021 (R. Hess)

Audio Tracks



Andrew Lloyd Dulmage

<http://archives.brandonu.ca/en/permalink/descriptions2575>

Part Of: Brandon University Photograph Collection

Creator: Photographer: Terence J. Fowler

Description Level: Item

Series Number: 9

Item Number: BUPC 9.26

GMD: graphic

Date Range: c. 1970

Physical Description: 11" x 14" (b/w)

Scope and Content:

Portrait of Andrew Lloyd Dulmage, President of Brandon University from 1970 to 1977.

Name Access: Andrew Lloyd Dulmage

Dulmage

Subject Access: president

Portrait

Storage Range: Oversize drawer 4

Images





Atkinson site 2003 - Mike and Andrew

<http://archives.brandonu.ca/en/permalink/descriptions12187>

Part Of: RG 7 Beverley Nicholson fonds

Description Level: Item

Series Number: 2.1.1.5

Item Number: 2.1.1.5.17

Accession Number: 1-2010

GMD: graphic

Date Range: 2003

Physical Description: 720 x 480 (328 KB)

Material Details: JPEG

History /

Biographical:

Photograph taken during 2003 Brandon University Archaeology excavations at Atkinson site.

Scope and Content:

Mike Evans and Andrew Creighton at the Atkinson site.

Name Access: Atkinson site 2003 - Mike and Andrew

Subject Access: Archaeology
North lauder locale
Atkinson site DiMe-27
Atkinson site 2003 photographs

Images





Wayne Andrews

<http://archives.brandonu.ca/en/permalink/descriptions2117>

Part Of: Brandon University Photograph Collection

Description Level: Item

Series Number: 8

Item Number: 8.A.3

GMD: graphic

Date Range: late 1960s

Physical Description: 2.5" x 3.5" (b/w)

Scope and Content:

Portrait of Wayne Andrews (Psychology Department).



Graham site 2008 - Bill, Andrew and Kim excavating

<http://archives.bradonnu.ca/en/permalink/descriptions11942>

Part Of: RG 7 Beverley Nicholson fonds

Description Level: Item

Series Number: 1.4.3.5

Item Number: 1

Accession Number: 1-2010

GMD: graphic

Date Range: 2008

Physical Description: 2000 x 1500 (543 KB)

Material Details: JPEG

Scope and Content:

Bill Foy, Andrew Lints and Kim Harrison excavating at Graham 2008

Name Access: Graham site 2008 - Bill, Andrew and Kim excavating

Subject Access: Archaeology
Crepeele locale
Graham site 2008
Graham site 2008 - photographs

Images



Crepeele site 2008 - Andrew Lints field journal

<http://archives.bradonnu.ca/en/permalink/descriptions11963>

Part Of: RG 7 Beverley Nicholson fonds

Description Level: sub sub sub series

Series Number: 1.2.5.2

File Number: 2

Accession Number: 1-2010

GMD: multiple media

Date Range: 2008

Physical Description: 13 pages

Material Details: Field journals have been scanned in multi-page PDF files.

History /

Biographical:

The Crepeele site was identified from the results of the Casselman survey and excavated in 2003, 2004, 2005 and 2007.

In 2008 a small crew under the direction of Bev Nicholson returned to the site to gather further samples and verify profiles. Three units (XU 50, 51 and 52) were excavated. As well the Graham site 2008 was also excavated.

The field journals contain information about both the Crepeele and Graham sites 2008.

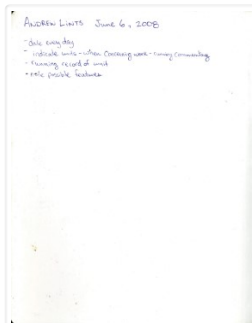
Scope and Content:

Record of daily observations at the site including: excavation methods, items recovered, features, local environment and weather.

Name Access: Crepeele site 2008 - Andrew Lints field journal

Subject Access: Archaeology
Crepeele locale
Crepeele site DiMe-29
Crepeele site 2008

Documents



1.2.5.2.2_C08_ALints.pdf

 Read PDF

 Download PDF



Graham site 2008 - Andrew Lints field journal

<http://archives.brandonu.ca/en/permalink/descriptions11810>

Part Of: RG 7 Beverley Nicholson fonds

Description Level: File

Series Number: 1.4.4.2

File Number: 2

Accession Number: 1-2010

GMD: multiple media

Date Range: 2008

Physical Description: 13 pages

Material Details: Field journals have been scanned in multi-page PDF files.

History /
Biographical:

In 2008 Brandon University Archaeology returned to the Crepeelee locale to conduct further testing at the Graham and Crepeelee sites. Four units (XU 47-49 & 53) were excavated at Graham 2008 in order to collect samples and add further data to previous excavations. The usual excavation methodology was employed.

The small crew was directed by Bev Nicholson with Crew of Bill Foy, Andrew Lints & Kim Harrison

Recoveries included faunal (mostly bison), lithics and ceramics.

The field journals contain information about both the Crepeelee and Graham sites 2008.

Scope and Content:

Record of daily observations at the site including: excavation methods, items recovered, features, local environment and weather.

Name Access: Graham site 2008 - Andrew Lints field journal

Subject Access: Archaeology
Crepeelee locale
Graham site DiMe-30
Graham site 2008

Documents



1.4.4.2.2_Graham08_A
Lints.pdf

 Read PDF

 Download PDF



Crepeele site 2007 - Katherine Nichols, Andrew Lints and Steven Dorland

<http://archives.bradonu.ca/en/permalink/descriptions11799>

Part Of: RG 7 Beverley Nicholson fonds

Description Level: Item

Series Number: 1.2.4.5

Item Number: 1.2.4.5.3

Accession Number: 1-2010

GMD: graphic

Date Range: 2007

Physical Description: 1600 x 1200 (1327 KB)

Material Details: JPEG

History /

Biographical:

Photograph taken during 2007 Brandon University Archaeology Field School

Scope and Content:

Field school students Katherine Nichols, Andrew Lints and Steven Dorland.

Name Access: Crepeele site 2007 -Katherine Nichols, Andrew Lints and Steven Dorland

Subject Access: Archaeology
Crepeele locale
Crepeele site DiMe-29
Crepeele site 2007
Crepeele site 2007 - photographs

Images





J.J. Hill

<http://archives.brandonu.ca/en/permalink/descriptions2279>

Part Of: Brandon University Photograph Collection

Description Level: Item

Series Number: 8

Item Number: 8.H.14

GMD: graphic

Date Range: c. 1960

Physical Description: 1" x 1.5" (b/w)

Scope and Content:

Portrait of J. J. Hill (Superintendent, Brandon School Division).



Flintstone Hill 1998-2000 - crew at Flintstone Hill

<http://archives.brandonu.ca/en/permalink/descriptions12324>

Part Of: RG 7 Beverley Nicholson fonds

Description Level: Item

Series Number: 2.2.2.5

Item Number: 2.2.2.5.11

Accession Number: 1-2010

GMD: graphic

Date Range: 1998-2000

Physical Description: 792 x 536(362)

Material Details: JPEG

History /

Biographical:

Photograph taken during 1998-2000 Brandon University Archaeology survey at Flintstone Hill.

Scope and Content:

Rea Postalski, Steve Kaastan and Chris Hamilton at Flintstone Hill.

Name Access: Flintstone Hill 1998-2000 - Crew at Flintstone Hill

Subject Access: Archaeology

North lauder locale

Flintstone Hill DiMe-26

Flintstone Hill 1998-2000 - crew at Flintstone Hill

Images





Flintstone Hill 1998-2000 - crew at Flintstone Hill

<http://archives.brandonu.ca/en/permalink/descriptions12325>

Part Of: RG 7 Beverley Nicholson fonds

Description Level: Item

Series Number: 2.2.2.5

Item Number: 2.2.2.5.12

Accession Number: 1-2010

GMD: graphic

Date Range: 1998-2000

Physical Description: 1115 x 800(373)

Material Details: JPEG

History /

Biographical:

Photograph taken during 1998-2000 Brandon University Archaeology survey at Flintstone Hill.

Scope and Content:

Lauder crew in camp.

Name Access: Flintstone Hill 1998-2000 - Lauder crew in camp

Subject Access: Archaeology

North lauder locale

Flintstone Hill DiMe-26

Flintstone Hill 1998-2000 - Lauder crew in camp

Images





Flintstone Hill 1997

<http://archives.brandonu.ca/en/permalink/descriptions12284>

Part Of: RG 7 Beverley Nicholson fonds
Description Level: Sub sub series
Series Number: 2.2.1
Accession Number: 1-2010
GMD: multiple media
Date Range: 1997
Material Details: Field journals have been scanned in multi-page PDF files. Artifact catalogues are PDF files in spreadsheet format. Photographs are in jpeg format.

History /

Biographical:

During the mid 1990's to the early 2000's archaeological surveying and testing took place on Flintstone Hill. In 1997 testing at the site revealed a bison skull eroding from the cutbank. A field crew dug a series of overlapping trenches down the slope of the profile and produced a schematic drawing. A radiocarbon date from the lower edge of the profile gave a date of 10,400 RCY.

Test units along the cutbank recovered lithics, soil samples, fire-cracked rock, charcoal, bison remains including a very large bison skull measuring 430-440 cm and thought to be an ancient species.

Radiocarbon dates at Flintstone hill gave dates of: a hearth dating to 3250+/-70 R.C.Y. (BETA 109529); a butchered atlas bone 4090+/-70 R.C.Y. (BETA 109990); and bone fragments accompanied by Swan River Chert and Knife River Flint lithic flakes 5350+/-50 (BETA 109530). While no diagnostic tools were recovered, these dates suggest that this occupation, which is contemporary with the Atkinson site, may be a Gowen occupation.

Scope and Content:

Sub-sub-sub series contains: Summary information of field methodology, number and co-ordinates of excavations, personnel and their staff position; Field journals are daily records of recoveries, features and activities at the site; Site records include excavation level and unit summaries, feature sheets, profiles; sample records and maps; Artifact catalogues are lists and identifications of all artifacts recovered; Photographs are of excavation units, features, the landscape and personnel.

Name Access: Flintstone Hill 1997
Subject Access: Archaeology
North Lauder locale
Flintstone Hill - DiMe-26
Flintstone Hill 1997



Album - city on the hill

<http://archives.brandonu.ca/en/permalink/descriptions14228>

Part Of: Fred McGuinness collection

Description Level: Item

Series Number: McG 9

Item Number: 1-2015.277.A20

Accession Number: 1-2015

GMD: graphic

Date Range: [1900s]

Physical Description: 4" x 2.5" (b/w)

Material Details: mounted in album

Physical Condition: Photo is warped

Scope and Content:

Photograph shows several wood-framed buildings and log cabins in the winter.

Notes: Writing beneath the photograph in the album reads: The City on the Hill

Subject Access: winter

settlement

Storage Location: 1-2015 McG 1.4 Box 1 (in stacks, top shelf)

Images





Env. Greening the Hill

<http://archives.brandonu.ca/en/permalink/descriptions5273>

Part Of: RG 6 Brandon University fonds
Description Level: File
Series Number: MG 3 1.14.1
File Number: 334
GMD: textual records
Date Range: 1992
Physical Description: 1 file
Scope and Content:
File consists of information
Storage Location: RG 6 Brandon University fonds
MG 3 Brandon University Teaching and Administration
1.14.1 W. Leland Clark - political career
Box 14



Flintstone Hill - DiMe-26

<http://archives.brandonu.ca/en/permalink/descriptions12283>

Part Of: RG 7 Beverley Nicholson fonds
Description Level: Sub-series
Series Number: 2.2
Accession Number: 1-2010
GMD: multiple media
Date Range: 1997-2000

Flintstone Hill is located on the north bank of the Souris River. It is a deeply stratified lacustrine, fluvial and aeolian soil profile that has been exposed by the river through stream-bank erosion. This section is thought to be the most complete middle to late Holocene exposure on the northeastern plains. While the value of the site is primarily for paleo-environmental research and reconstruction, cultural deposits have been identified at the site. Local collectors have picked up lithic materials as they eroded out of the bank for the past several decades and it was they who had named the site. Mr. Bruce Timms from Lauder first drew the Flintstone Hill site to the attention of Dr. Nicholson of Brandon University.

During the mid 1990's to the early 2000's archaeological testing took place on Flintstone Hill. In 1998, an archaeological field crew dug a series of overlapping trenches down the slope of the profile and produced a schematic drawing. A peat layer at the bottom of this profile, dated from the top at 9,400 RCY and at the bottom to 10,400 RCY, has provided details of marsh plant and insect communities at this time.

Subsequent archaeological investigations at the site recovered several cultural deposits including: a hearth dating to 3250 \pm 70 R.C.Y. (BETA 109529); a butchered atlas bone 4090 \pm 70 R.C.Y. (BETA 109990); and bone fragments accompanied by Swan River Chert and Knife River Flint lithic flakes 5350 \pm 50 (BETA 109530). While no diagnostic tools were recovered, these dates suggest that this occupation, which is contemporary with the Atkinson site, may be a Gowen occupation.

Extensive paleo-environmental research has been conducted at the site. Dr. Running, a geomorphologist from the University of Wisconsin – Eau Claire, participated in the Study of Cultural Adaptations in the Prairie Ecozone (SCAPE) Project and he and his students tested the site for several years. He was joined in this effort by Dr. Havholm, Dr. Boyd, Dr. Wiseman, Dr. Beaudoin, and other SCAPE researchers in the interpretation of the paleo-environment of the Glacial Lake Hind basin. The following article is recommended reading.

Running, Garry L., Karen G. Havholm, Matt Boyd and Dion J. Wiseman
2002 Holocene Stratigraphy and Geomorphology of Flintstone Hill, Lauder Sandhills, Glacial Lake Hind Basin, Southwestern Manitoba. *Geographie Physique et Quaternaire* 56(2-3):291-303.

Scope and Content:

Sub series has been divided into two sub sub series including: (1) Flintstone Hill 1997 (2) Flintstone Hill 1998-2000

Name Access: Flintstone Hill - DiMe-26

Subject Access: Archaeology
North Lauder locale
Flintstone Hill - DiMe-26



Flintstone Hill 1998-2000

<http://archives.brandonu.ca/en/permalink/descriptions12290>

Part Of: RG 7 Beverley Nicholson fonds
Description Level: Sub sub series
Series Number: 2.2.2
Accession Number: 1-2010
GMD: multiple media
Date Range: 1998-2000
Material Details: Field journals have been scanned in multi-page PDF files. Artifact catalogues are PDF files in spreadsheet format. Photographs are in jpeg format.

History /

Biographical:

In 1998, 1999 and 2000 further testing took place on Flintstone Hill. Five test units were excavated and a series of small exploratory tests took place. Recoveries included: lithics, soil samples, fire-cracked rock, charcoal, and bison bones.

Unfortunately, despite the encouraging radiocarbon dates and scattered recoveries there was no area where extensive excavations were feasible. The unstable nature of the river bank with frequent spring flooding and erosion of the dunes has impacted potential sites.

Scope and Content:

Sub-sub-sub series contains: Summary information of field methodology, number and co-ordinates of excavations, personnel and their staff position; Field journals are daily records of recoveries, features and activities at the site; Site records include excavation level and unit summaries, feature sheets, profiles; sample records and maps; Artifact catalogues are lists and identifications of all artifacts recovered; Photographs are of excavation units, features, the landscape and personnel.

Name Access: Flintstone Hill 1998-2000
Subject Access: Archaeology
North Lauder locale
Flintstone Hill - DiMe-26
Flintstone Hill 1998-2000



Flintstone Hill - summary information

<http://archives.brandonu.ca/en/permalink/descriptions12299>

Part Of: RG 7 Beverley Nicholson fonds
Description Level: Sub sub series
Series Number: 2.2.2.1
Date Range: 1998-2000
Material Details: Field journals have been scanned in multi-page PDF files. Artifact catalogues are PDF files in spreadsheet format. Photographs are in jpeg format

History /

Biographical:

Over a period from 1997 to 2000 over 40 test pits were surveyed and five test units put in. Crew members included: Bev Nicholson, Scott Hamilton, Matt Boyd, Tomasin Playford, Lori Mokolki, T.J Hall, Rea Postoloski, Andy Belcourt, Jace Moon, Michelle Drysdale as well as others.

Name Access: Flintstone Hill - summary information
Subject Access: Archaeology
North Lauder locale
Flintstone Hill DiMe-26
Flintstone Hill - summary information



Album - view from the hill

<http://archives.brandonu.ca/en/permalink/descriptions14229>

Part Of: Fred McGuinness collection

Description Level: Item

Series Number: McG 9

Item Number: 1-2015.277.A21

Accession Number: 1-2015

GMD: graphic

Date Range: [1900s]

Physical Description: 4" x 2.5" (b/w)

Material Details: mounted in album

Physical Condition: Photo is warped

Scope and Content:

Photograph shows a view from a hill overlooking a lake.

Notes: Writing beneath the photograph in the album reads: View from the Hill

Subject Access: lakes

Storage Location: 1-2015 McG 1.4 Box 1 (in stacks, top shelf)

Images



Georgina Matiation (Hill) collection

<http://archives.brandonu.ca/en/permalink/descriptions4887>

Part Of: RG 1 Brandon College fonds

Description Level: Sub-series

Series Number: MG 2 2.23

Accession Number: 29-1998

GMD: multiple media

Date Range: 1954-1956

Physical Description: 1 cm textual records
3 photographs

History /

Biographical:

Georgina Bernice Matiation (Hill) was born in Virden, Manitoba on February 19, 1936, daughter of Gordon and Florence Hill. She received her education at Brandon College (1954-1956). Originally a student in Arts, she graduated from the Teacher Training program in 1956. During her time at Brandon College, Matiation participated in the College Glee Club as well as college track and field meets. She also acted as Junior Ladies Athletic Representative in 1955. In addition, Matiation was was the President of her Normal School class.

Matiation began her teaching career in Hargrave and Melita, before taking a position at Prince Charles School in Portage la Prairie in 1960. She remained at that institution until her retirement in 1991. In addition to her teaching career, Matiation was a past president of the Portage Evening Ladies Curling Club, a past president of the La Prairie Lioness and a leader of CGIT. She was a lifelong member of the Lenore Presbyterian Church.

Georgina Hill married Zane Matiation in 1970. They had no children. Georgina Matiation died on October 28, 1995 in Portage la Prairie at the age of 59 years.

Custodial History:

This collection was donated to the McKee Archives by Bessie Marie Hill of Winnipeg on May 1, 1998.

Scope and Content:

The collection consists of items collected by Mrs. Matiation (Hill) during her years as a student at Brandon College. The collection contains a scrapbook of photos of students and activities at the College taken from 1954-1956. Fonds includes copies of speeches made by her at various school events, such as her validictorian speech at the Normal School Graduation in 1956. There is also an autograph book with messages to her from friends and classmates. Finally, the collection includes two photographs of students in the 1924-25 Brandon Normal School, and one photograph of the Westminster Presbyterian Church in Brandon.

Notes: CAIN No. 202616. Description by Christy Henry.

Subject Access: Georgina Matiation (Hill)
Brandon College
Brandon
Manitoba
Westminster Presbyterian Church of Brandon
MB
college life
student life
scrapbooks

Storage Location: MG 2 Brandon College Students
2.23 Georgina Matiation (Hill)

The collection is located with MG 2 2.2 Gerald Brown. It was placed there as a result of space issues.

Related Material: Bessie Marie Hill (33-1999, 12-2001, 6-2003)