

S. J. McKee Archives



Aerial views and campus photographs

<http://archives.brandonu.ca/en/permalink/descriptions6>

Part Of: BUPC 2 Campus buildings

Description Level: Sub-series

Series Number: 2.1

GMD: graphic

Date Range: c.1920s; c.1950s - c.2000

Physical Description: 146 photographs

History /

Biographical:

Aerial photographs of the campus were generally commissioned by the College/University to record important milestones, such as centennials, changes in status, and building projects. The general campus photographs were placed in this sub-series because the composition of the images made it difficult to place them with individual buildings.

Scope and Content:

Sub-series consists of photographs of the Brandon College and Brandon University campus.

Name Access: Flora Cowan Residence

Subject Access: Aerial views Brandon College



A.E. McKenzie Building and George T. Richardson Centre

<http://archives.brandonu.ca/en/permalink/descriptions949>

Part Of: BUPC 2 Campus buildings

Description Level: Sub-series

Series Number: 2.4

GMD: graphic

Date Range: c. 1959 - 1995

Physical Description: 43 photographs

History /

Biographical:

The J.R.C. Evans Lecture Theatre and the A.E. McKenzie Building were both completed in 1960. The Evans Theatre is named for John Robert Charles Evans, who served as president of Brandon College from 1928 to 1959. The A.E. McKenzie Building was originally the Library and Arts building, and was named for A.E. McKenzie, a local businessman and supporter of the College. The George T. Richardson Centre, which includes the Evans Theatre and the John E. Robbins Library, was completed in 1993.

Scope and Content:

Sub-series consists of photographs of the A.E. McKenzie Building, the George T. Richardson Centre, the J.R.C. Evans Lecture Theatre, the John E. Robbins Library and the link between the Evans Theatre and the McKenzie Building.



MPE D Commissions, Committees and Inquiries

<http://archives.brandonu.ca/en/permalink/descriptions11230>

Part Of: RG 4 Manitoba Pool Elevator fonds

Description Level: Series

Series Number: MPE D

GMD: textual records

Date Range: 1931-1985

Physical Description: 2.83 m

History /

Biographical:

This is an artificially created series containing records retained by Manitoba Pool Elevators of official commissions, committee and inquiries that dealt directly with the organization and its interests. Subjects include commission investigation as well and committee and inquiries into government policy and bills.

See also fonds level description of RG 4 for history/bio of MPE

Scope and Content:

.This series has been divided into seven sub-series, including: (1) Royal Commission on Co-operatives, (2) Royal Commission on Manitoba Pool Elevators, (3) Transportation Commissions and Inquiries, (4) Box Car Inquiry, (5) Grain Commissions and Inquiries, (6) Agricultural Commissions and Policy, (7) Miscellaneous Committes, Commissions and Inquiries

Notes: Description by Jillian Sutherland (2010)

Subject Access: Commissions

Storage Location: RG 4 Manitoba Pool Elevator fonds



MPE D 1 Royal Commission on Co-operatives

<http://archives.brandonu.ca/en/permalink/descriptions11274>

Part Of: RG 4 Manitoba Pool Elevator fonds

Description Level: Sub-series

Series Number: MPE D.1

GMD: textual records

Date Range: 1945

Physical Description: 1m

History /

Biographical:

This commission was appointed in late 1944 and made its reports and recommendations in late 1945. The commission's tasks were the following: (1) give a legal opinion on existing taxation legislation affecting co-operatives, (2) recommend taxation legislation in respect to co-operatives, with due regard to current tax burdens on privately owned business, (3) provide a picture of the actual structure of co-operative enterprise in Canada, its growth, and the effects of taxation upon it.

The commission's findings were, briefly: (1) Section 4, paragraph (p) of the Income War Tax Act is so ambiguous as to justify its repeal, (2) commission recommended legislation permitting both co-operative and joint stock companies to deduct patronage dividends in computing taxes, whether paid out or available on demand, (3) appendices of research staff findings that provide statistical and historical information on the origin, growth and distribution of co-operatives in Canada.

See also fonds level description of RG 4 for history/bio of MPE

Scope and Content:

.This sub-series contains volumes 1 - 31 of the Royal Commission on Co-operatives, the brief and report on the Commission, an outline of argument on behalf of certain co-operative organizations.

Notes: Description by Jillian Sutherland (2010)

Name Access: Royal Commission on Co-operatives

Subject Access: Commissions

Storage Location: RG 4 Manitoba Pool Elevator fonds
Series D: Commissions, Committees and Inquiries



MPE D 2 Royal Commission on Manitoba Pool Elevators

<http://archives.brandonu.ca/en/permalink/descriptions11306>

Part Of: RG 4 Manitoba Pool Elevator fonds

Description Level: Sub-series

Series Number: MPE D.2

GMD: textual records

Date Range: 1931

Physical Description: 33cm

History /

Biographical:

A commission to inquire into the formation and operation of the Manitoba Pool up until 1931. Charges were brought against the Pool by J.R. Murray, then Assistant General Manager of UGG. The four charges were, briefly: (1) producers had been misled into forming elevator associations, (2) members are bound by contract to the association, (3) financial statements sent out to associations are inaccurate, (4) Pool members are not getting as good a deal as they would on the free market.

The first two charges were deemed provable by the commission, while the last two were not. It was noted by the commissioner that no pool members had come forward with complaints.

See also fonds level description of RG 4 for history/bio of MPE

Scope and Content:

.This sub-series contains volumes 1 - 25 of the Royal Commission on Manitoba Pool Elevators.

Notes: Description by Jillian Sutherland (2010)

Name Access: Royal Commission on Manitoba Pool Elevators
United Grain Growers

Subject Access: Commissions

Storage Location: RG 4 Manitoba Pool Elevator fonds
Series D: Commissions, Committees and Inquiries



MPE D 3 Transportation Commissions and Inquiries

<http://archives.brandonu.ca/en/permalink/descriptions11319>

Part Of: RG 4 Manitoba Pool Elevator fonds

Description Level: Sub-series

Series Number: MPE D.3

GMD: textual records

Date Range: 1931-1985

Physical Description: 46cm

History /

Biographical:

Commissions dealing with transportation by rail and by sea were important to Manitoba Pool Elevators, as the cost and efficiency of transport affected the cost of service to its members.

See also fonds level description of RG 4 for history/bio of MPE

Scope and Content:

.This sub-series contains the following:

Box 1:

1. St. Lawrence Seaway 1961-1971
2. Royal Commission on Transportation - excerpt from the evidence of Sir Henry Thornton 1931-1932
3. Royal Commission on Transportation 1949-1950
4. Report of the Royal Commission on Transportation February 9, 1951
5. The Royal Commission on Transportation 1960
6. The Royal Commission on Transportation 1960-1967
7. The Canadian Transport Commission 1985

Box 2:

8. The Grain Handling and Transportation Commission 1975-1976
- 9a. Submissions to the Grain Handling and Transportation Commission 1975-1977
- 9b. Submissions to the Grain Handling and Transportation Commission 1975-1977
10. Submissions to the Grain Handling and Transportation Commission 1976
11. Grain Handling and Transportation Commission 1976
12. Submissions to the Grain Handling and Transportation Commission 1976
13. Submissions to the Grain Handling and Transportation Commission 1976
14. Appendix to Final Submission of CN Railways to GH&TC 1976
15. Submission by the Province of Manitoba to the GH&TC 1976
16. Grain Handling and Transportation Commission 1975-1976
17. Grain Handling and Transportation Commission 1974-1976
- 18a. Grain Handling and Transportation Commission 1976-1977
- 18b. Grain Handling and Transportation Commission 1976
19. Grain Handling and Transportation Commission Public Hearings 1976
20. Grain Handling and Transportation Commission 1976
21. Grain Handling and Transportation Commission 1976
22. MPE Submission to the Grain Handling and Transportation Commission 1975

Notes: Description by Jillian Sutherland (2010)

Name Access: Grain Handling and Transportation Commission

Subject Access: railways

Grain

Storage Location: RG 4 Manitoba Pool Elevator fonds

Series D: Commissions, Committees and Inquiries



MPE D 4 Box Car Inquiry

<http://archives.brandonu.ca/en/permalink/descriptions11327>

Part Of: RG 4 Manitoba Pool Elevator fonds

Description Level: Sub-series

Series Number: MPE D.4

GMD: textual records

Date Range: 1958

Physical Description: 26cm

History /

Biographical:

This was a commission by the Bracken government into the distribution of box cars.

See also fonds level description of RG 4 for history/bio of MPE

Scope and Content:

. This sub-series contains submissions to the Box Car Inquiry, proceedings of the Inquiry, and reports of the Inquiry.

Notes: Description by Jillian Sutherland (2010)

Name Access: Box Car Inquiry

Bracken

Subject Access: railways

Storage Location: RG 4 Manitoba Pool Elevator fonds

Series D: Commissions, Committees and Inquiries



MPE D 5 Grain Commissions and Inquiries

<http://archives.brandonu.ca/en/permalink/descriptions11331>

Part Of: RG 4 Manitoba Pool Elevator fonds

Description Level: Sub-series

Series Number: MPE D.5

GMD: textual records

Date Range: 1936-1978

Physical Description: 13cm

History /

Biographical:

See also fonds level description of RG 4 for history/bio of MPE

Scope and Content:

.This sub-series contains the following:

1. Grain Inquiry 1936
2. Grain Inquiry Commission 1936-1937
3. Newspaper clippings concerning Grain Inquiry 1937
4. Canadian Royal Grain Inquiry Commission 1937
5. Report of the Royal Grain Inquiry Commission 1937
6. Canadian Grain Trade 1953-1966
7. Canadian Grain Trade 1970
8. Canadian Grain Trade 1972-1978

Notes: Description by Jillian Sutherland (2010)

Name Access: Royal Grain Inquiry Commission

Subject Access: Grain

Storage Location: RG 4 Manitoba Pool Elevator fonds
Series D: Commissions, Committees and Inquiries



MPE D 6 Agricultural Commissions and Policy

<http://archives.brandonu.ca/en/permalink/descriptions11336>

Part Of: RG 4 Manitoba Pool Elevator fonds

Description Level: Sub-series

Series Number: MPE D.6

GMD: textual records

Date Range: 1967-1975

Physical Description: 26cm

History /

Biographical:

See also fonds level description of RG 4 for history/bio of MPE

Scope and Content:

.This sub-series contains the following:

Box 1:

1. Canadian Agricultural Miscellaneous 1967-1972
2. Canadian Agricultural Miscellaneous 1973-1975
3. Canadian Agricultural Miscellaneous 1970-1975
4. Bill C-175 An act respecting grain
5. Bill C-196 Canada Grain Act 1970

Box 2:

- 6a. Canadian Agricultural Miscellaneous 1971
- 6b. Canadian Agricultural Miscellaneous 1971
- 7a. Bill C-41 The Western Grain Stabilization Act 1975
- 7b. Bill C-41 The Western Grain Stabilization Act 1975
8. General Agricultural Policy
9. Manitoba Agriculture 1936

Notes: Description by Jillian Sutherland (2010)

Name Access: Canada Grain Act

The Western Grain Stabilization Act

Subject Access: Grain

Storage Location: RG 4 Manitoba Pool Elevator fonds

Series D: Commissions, Committees and Inquiries



MPE D 7 Miscellaneous Committees, Commissions and Inquiries

<http://archives.brandonu.ca/en/permalink/descriptions11340>

Part Of: RG 4 Manitoba Pool Elevator fonds

Description Level: Sub-series

Series Number: MPE D.7

GMD: textual records

Date Range: 1931-1995

Physical Description: 39cm

History /

Biographical:

See also fonds level description of RG 4 for history/bio of MPE

Scope and Content:

. This sub-series contains the following:

Box 1:

1. Farm Implement Prices 1937, 1939, 1961
- 2a. Trading in Grain Futures 1931
- 2b. Trading in Grain Futures 1931
3. Manitoba/Canada's Economic Development 1955-1973
4. Food and Consumer Prices 1958-1973
5. Farm Organizations and Local Governments

Box 2:

6. Livestock 1961-1975
7. Bryce Commission August 1976
8. Terminal Grain Elevators at Thunder Bay 1973
- 9a. Taxation 1945
- 9b. Taxation 1963-1967
- 9c. Taxation 1967-1970

Box 3:

- Manash Statistical Submissions to Turgeon Commission 1936
- 10a. Western Grain Transport Act 1985-1995
 - 10b. Western Grain Transport Act 1985-1995

Notes: Description by Jillian Sutherland (2010)

Name Access: Canada Grain Act
The Western Grain Stabilization Act
Western Grain Transport Act

Subject Access: Grain

Storage Location: RG 4 Manitoba Pool Elevator fonds
Series D: Commissions, Committees and Inquiries



Cooperative marketing of agricultural products

<http://archives.brandonu.ca/en/permalink/specialcollections681>

Part Of: RG 4 Manitoba Pool Elevator fonds
Collection: Robert Dudley Howland Fabian Society Collection
Creator: Comish, Newel Howland, b. 1888
Description Level: Item
Item Number: Archives 14-8-15
Item Number Range: Archives 14-8-15
Responsibility: by Newel Howland Comish
Start Date: 1929
Date Range: 1929
Publication: New York : D. Appleton and Company
Physical Description: xxii, 479 p. ; 21 cm
Notes: Includes bibliographical reference and index
Subject Access: Agriculture
Cooperative
Cooperative United States
Farm produce Marketing
Storage Location: Box 8 - Historical IV & Cooperation II
Storage Range: Box 8 - Historical IV & Cooperation II



Manitoba Pool Elevator Library collection

<http://archives.brandonu.ca/en/permalink/specialcollections1407>

Part Of: RG 4 Manitoba Pool Elevator fonds
Collection: Manitoba Pool Elevator Library collection
Description Level: Series
Series Number: MPE E
GMD: textual records
Date Range: 1888-1998
Physical Description: 13.7 m
History /
Biographical:

The importance of knowledge and education to the Manitoba Wheat Pool is made clear in the *The Scoop Shovel*, the official organ of the Manitoba Wheat Pool and other co-operatives in Manitoba. Established in the 1920s, *The Scoop Shovel* owed its existence to a decision by the directors of the Pool to set aside small percentage of income per bushel for educational purposes. R.A. Hoey began to hold meetings to discuss the idea that the Pool was about more than just marketing grain, and in 1926 a Department of Education and Publicity was organized within the Pool. It was directed by J.T. Hull and advised by R.A. Hoey; they expanded and supervised *The Scoop Shovel*.

They also began to accumulate the educational volumes that would become the Pool library. Hull announced in November of 1926 that the library would be open by the end of the month and reported that: "We have a good representation of works on sociology... On co-operation

we have about every book that we can find published in the English language. We have also a good selection of books on economics, history, science, general literature, and rural life. In a word, we have tried to make the library one of usefulness to people whose life is on the land."

He also encouraged Pool members—who were the only ones allowed to use the library at this time—to utilize the library to educate themselves, saying "Use it, for knowledge is power". Once the library was open to all Pool members, Hull wrote a regular column for *The Scoop Shovel* called "In the Library", in which he would review books and recommend reading in response to frequent questions from members. When the library gained new books, which was almost continually, he would list them and sometimes discuss them.

The library service was a mailing one; the main collection was kept at the Manitoba Wheat Pool central office in Winnipeg and members could request a catalogue of all the library holdings. If they wanted to borrow a book or books on a specific topic, they could write to Hull and the books would be mailed out to the member and returned by mail, all postage costs covered by the Pool Library.

During the crisis of the early 1930s, the library was saved because the Manitoba Co-operative Conference believed it was vital to the success of the Pools and the co-operative movement. The Conference took over administration of the Pool library in 1931, leasing the books and equipment from the Wheat Pool. The library was formally incorporated under a charter after it changed hands, the other charter members being the Co-operative Marketing Board and the United Farmers of Manitoba.

In 1935 the service was made available free of charge to all rural Manitobans with the financial support of the Co-op Marketing Board. By 1939, Manitoba Pool Elevators had begun to prosper again, and took back responsibility for the administration and housing of the library. The traveling library was also established around this time, and hundreds of boxes were distributed to all MPE points. The boxes were rotated and refreshed twice a year.

In 1942 Hull estimated that there were approximately 4,700 books in the Pool Library with an annual circulation of 4,000 to 5,000 books. Operating the library cost around two thousand dollars per year, although the cost was split between the members of the Manitoba Co-operative Conference, at least it was in theory. The Pool library ran as a free service to all rural Manitobans, regardless of whether they were members of the Pool, and the federal government census in 1941 indicates that over half of Manitoba's population (56%) still lived in rural areas. In 1948, the majority of the Pool Library's services were rendered unnecessary by an act called the "Public Libraries Act" that had been passed by the Manitoba legislature on April 22, 1948, and would go into effect July 1, 1948. The act provided for the establishing of a provincial "Public Library Advisory Board" that would be appointed by the government. Once the board had been established, the act allowed for the establishment of municipal and regional libraries that would be the administrative responsibility of the municipality or region they served and would be supported by a land tax levied on the population that would have access to the library. All employees of the central provincial library would be considered civil servants.

When the Provincial Library was being established in 1949, the Minister in charge of education—Ivan Shultz—actively sought both the advice of those who operated the Pool Library and the physical resources of the Library. In a letter to W.J. Parker, the President of Manitoba Pool Elevators, Shultz wrote that: "We find that in looking at the province as a whole that the box library service of the Manitoba Pool Elevators is the best developed and the best distributed within the province... We would feel that to a considerable extent you had pioneered in this field and we would be using your accomplishments as a springboard for a wider coverage of the province and an enlargement of the service."

He also requested that Miss E.L. Shields—the Pool Librarian—be released from Pool employment so that the Provincial Library could hire her for a year to aid in setting up the new

library system.

An agreement was reached between MPE and the Provincial Library, and the bulk of the Pool Library was transferred to the province. The Pool retained the volumes it wished to keep as reference for its employees, and donated the rest of the open shelf library to the province. The traveling library service was sold at a discount to the province, with the caveat that service not be interrupted during the transfer and that the quality of service to rural Manitoba not diminish once the Library had been entirely transferred to the government. In a letter to Ivan Shultz after the agreement to sell the traveling library had been reached, W.J. Parker wrote that:

"...Manitoba Pool Elevators has maintained an open shelf library for a period of some twenty years. These books have been made available to anyone in Manitoba, outside the City of Winnipeg, and the postage both ways was paid by the Pool. We feel it has served a very useful purpose, but that it is not primarily our function and if the government proposes to offer a more complete and universal service we are prepared to retire from the field and avoid what might be considered unnecessary duplication."

Scope and Content:

Series contains items once held as part of the Manitoba Pool Library. It has been divided into the following four sub-series: (1) MPE E 1 Manitoba Pool Library publications; (2) MPE E 2 The Scoop Shovel; (3) MPE E 3 The Manitoba Cooperator; and (4) MPE E 4 Pamphlet collection.

Notes:

Description by Jill Sutherland and Christy Henry



The Scoop Shovel

<http://archives.brandonu.ca/en/permalink/specialcollections1409>

Part Of:	RG 4 Manitoba Pool Elevator fonds
Collection:	Manitoba Pool Elevator Library collection
Description Level:	Item
Item Number:	TSS-1924-09-02
GMD:	textual records
Responsibility:	Manitoba Wheat Pool
Date Range:	September 2, 1924
Publisher Series:	Vol. 1 No. 1
Physical Description:	2 pp.
Scope and Content:	

Item consists of the first issue of The Scoop Shovel.

Notes:	Description by Christy Henry.
Location Original:	Archives 14-24-1, Box 24

Documents



TSS_1924_09_02.pdf

 Read PDF

 Download PDF

<http://archives.brandonu.ca/en/permalink/specialcollections1411>

Collection: Manitoba Pool Elevator Library collection

Item Number: TSS-1924-09-11

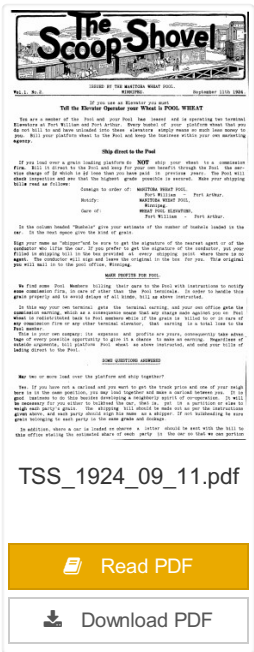
Responsibility: Manitoba Wheat Pool

Publisher Series: Vol. 1 No. 2

Scope and Content:

Notes: Description by Christy Henry.

Documents





The Scoop Shovel

<http://archives.brandonu.ca/en/permalink/specialcollections1412>

Part Of:	RG 4 Manitoba Pool Elevator fonds
Collection:	Manitoba Pool Elevator Library collecton
Description Level:	Item
Item Number:	TSS-1924-10-16
GMD:	textual records
Responsibility:	Manitoba Wheat Pool
Date Range:	October 16, 1924
Publisher Series:	Vol. 1 No. 4
Physical Description:	2 pp.
Scope and Content:	

Item consists of the October 16, 1924 issue of The Scoop Shovel.

Notes:	Description by Christy Henry.
Location Original:	Archives 14-24-1, Box 24

Documents

TSS_1924_10_16.pdf

Read PDF

Download PDF



The Scoop Shovel

<http://archives.brandonu.ca/en/permalink/specialcollections1413>

Part Of:	RG 4 Manitoba Pool Elevator fonds
Collection:	Manitoba Pool Elevator Library collecton
Description Level:	Item
Item Number:	TSS-1924-11-13
GMD:	textual records
Responsibility:	Manitoba Wheat Pool
Date Range:	November 13, 1924
Publisher Series:	Vol. 1 No. 5
Physical Description:	2 pp.
Scope and Content:	

Item consists of the November 13, 1924 issue of The Scoop Shovel.

Notes:	Description by Christy Henry.
Location Original:	Archives 14-24-1, Box 24

Documents

TSS_1924_11_13.pdf

Read PDF

Download PDF



The Scoop Shovel

<http://archives.brandonu.ca/en/permalink/specialcollections1414>

Part Of:	RG 4 Manitoba Pool Elevator fonds
Collection:	Manitoba Pool Elevator Library collecton
Description Level:	Item
Item Number:	TSS-1924-12-10
GMD:	textual records
Responsibility:	Manitoba Wheat Pool
Date Range:	December 10, 1924
Publisher Series:	Vol. 1 No. 6
Physical Description:	4pp.

Scope and Content:

Item consists of the December 10, 1924 issue of The Scoop Shovel, as well as an Index stamped Manitoba Wheat Pool Reference Library Publicity Department.

Notes:	Description by Christy Henry.
Location Original:	Archives 14-24-1, Box 24

Documents

TSS_1924_12_10.pdf

Read PDF

Download PDF



The Scoop Shovel

<http://archives.brandonu.ca/en/permalink/specialcollections1415>

Part Of: RG 4 Manitoba Pool Elevator fonds
Collection: Manitoba Pool Elevator Library collection
Description Level: Item
Item Number: TSS-1925-01
GMD: textual records
Responsibility: Manitoba Wheat Pool
Date Range: January 1925
Publisher Series: Vol. 1 No. 7
Physical Description: 18pp.

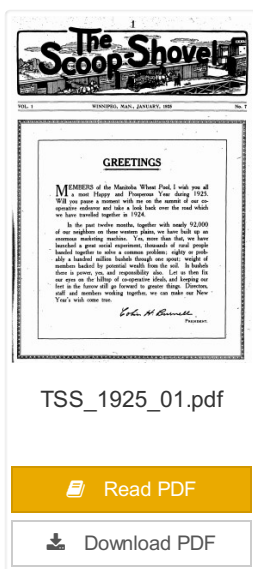
Scope and Content:

Item consists of the January 1925 issue of The Scoop Shovel.

Notes: Description by Christy Henry.

Location Original: Archives 14-24-1, Box 24

Documents





The Scoop Shovel

<http://archives.brandonu.ca/en/permalink/specialcollections1416>

Part Of: RG 4 Manitoba Pool Elevator fonds
Collection: Manitoba Pool Elevator Library collection
Description Level: Item
Item Number: TSS-1925-02
GMD: textual records
Responsibility: Manitoba Wheat Pool
Date Range: February 1925
Publisher Series: Vol. 1 No. 8
Physical Description: 16pp.
Scope and Content:

Item consists of the February 1925 issue of The Scoop Shovel.

Notes: Description by Christy Henry.

Location Original: Archives 14-24-1, Box 24

Documents

Vol. 1

WINNIPEG, MAN., FEBRUARY, 1925

No. 8

FORWARD-ALL TOGETHER


16


It is longer now the Manitoba farmer complains that he has nothing to say in the price which he receives for the products of his farm.

Operating in this Province since 1923 he has the Manitoba Co-operative Elevator with 2,110 farmer members, The Grain Pool operating the two great wheat & flax elevators, The Manitoba Co-operative Poultry Marketing Association operating since 1922, now having 1,000 members. The Co-operative Rural Elevators, which have 24,000, 200 Manitoba shippers out of 1,000 shippers in Manitoba, The Wheat Pool with 2,110 members, operating now in the handling other grains.

Every one of these co-operative organizations has been successful in getting the farmer more for the products which he has produced. They all stand more united to make sure that they are able to give him all better service. It is better that the Wheat Pool Elevator will be a better co-operative, a better elevator and a better outlet for the farmer's grain, wool, poultry, eggs and wool through his own organizations. It is better enough co-operative theory. Let's have more co-operative action.

TSS_1925_02.pdf

 Read PDF

 Download PDF

SIGN-UP NUMBER

The Scoop Shovel

<http://archives.brandonu.ca/en/permalink/specialcollections1417>

Part Of: RG 4 Manitoba Pool Elevator fonds
Collection: Manitoba Pool Elevator Library collection
Description Level: Item
Item Number: TSS-1925-03-01
GMD: textual records
Responsibility: Manitoba Wheat Pool
Date Range: March 1925
Publisher Series: Vol. 1 No. 9
Physical Description: 16pp.

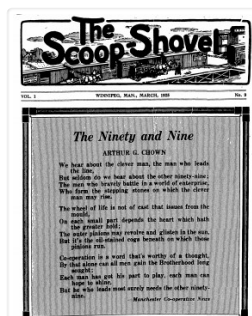
Scope and Content:

Item consists of the first issue of The Scoop Shovel published in March 1925.

Notes: Description by Christy Henry.


Location Original: Archives 14-24-1, Box 24


Documents



SIGN-UP NUMBER

TSS_1925_03_01.pdf

 Read PDF

 Download PDF