

S. J. McKee Archives



Aerial view: Brandon College from 23rd Street

<http://archives.brandonu.ca/en/permalink/descriptions602>

Part Of: Brandon University Photograph collection

Description Level: Item

Series Number: 2.1

Item Number: BUPC 2.1.9

GMD: graphic

Date Range: [1963-1966]

Physical Description: 5" x 4" (b/w)

Scope and Content:

Image is looking east northeast from approximately the 300 block of 23rd Street between Lorne and Louise Avenues. Photograph shows the Brandon College campus after the opening of the original Music Building in 1963, but before the construction of the Education Building in 1966. A number of house on the 300 blocks of 22nd and 21st Streets are visible in the foreground, with the A.E. McKenzie Seed Co., the Prince Edward Hotel and various grain elevators on the horizon.

Subject Access: aerial photographs
campus photographs
campus buildings
Brandon streets
Grain elevators

Images





Arborg Pool with exposed leg

<http://archives.brandonu.ca/en/permalink/descriptions14609>

Part Of: John Everitt collection

Description Level: Item

Item Number: JCE-0010

GMD: graphic

Date Range: September 1983

Material Details: Kodachrome slide

History /

Biographical:

Bulk grain is transported to the top of the grain elevator through the use of an endless cup conveyor, also known as the leg. Once at the top of the structure the grain can then flow down via a network of ducts into the various bins and pieces of equipment. Source of

History/Biography:

https://www.gov.mb.ca/chc/hrb/internal_reports/pdfs/Grain_Elevators_arch...

Custodial History:

Slide was in the possession of John Everitt before its donation to the SJ McKee Archives in 2007.

Scope and Content:

Item is an image of the Manitoba Pool Elevator at Arborg, MB. The elevator has an exposed leg.

Notes:

History/Bio information taken from the Government of Manitoba's "A history of grain elevators in Manitoba"

Repro Restriction:

The SJ McKee Archives is the copyright holder for the John Everitt collection and as such is providing access to the John Everitt slide collection for educational and research purposes only. To publish, copy or otherwise use these images, written permission must be obtained from the SJ McKee Archives. Any issues arising from the use of an item is the responsibility of the persons desiring to use the item, as is the securing of any necessary permissions for use.

Arrangement:

Original order. Box 1 - Section Man Pool 1

Images





Killarney line

<http://archives.brandonu.ca/en/permalink/descriptions14614>

Part Of: John Everitt collection

Description Level: Item

Item Number: JCE-0003

GMD: graphic

Date Range: September 1992

Material Details: plastic case

Custodial History:

Slide was in the possession of John Everitt before its donation to the SJ McKee Archives in 2007.

Scope and Content:

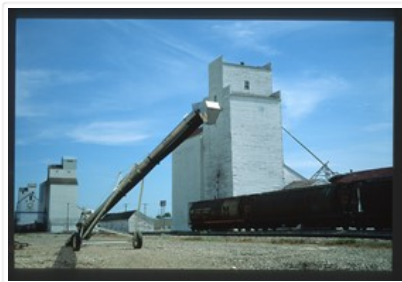
Item is an image of grain elevators (Paterson Grain, United Grain Growers, Pool B) along the Killarney, MB rail line.

Repro Restriction: The SJ McKee Archives is the copyright holder for the John Everitt collection and as such is providing access to the John Everitt slide collection for educational and research purposes only. To publish, copy or otherwise use these images, written permission must be obtained from the SJ McKee Archives. Any issues arising from the use of an item is the responsibility of the persons desiring to use the item, as is the securing of any necessary permissions for use.

Arrangement:

Original order. Box 1 - Section Man Pool 1

Images





Killarney Pool

<http://archives.brandonu.ca/en/permalink/descriptions14611>

Part Of: John Everitt collection

Description Level: Item

Item Number: JCE-0002

GMD: graphic

Date Range: May 1984

Material Details: Kodachrome slide

History /

Biographical:

Pool B is a composite grain elevator built along the CPR by Manitoba Pool Elevators in 1960. It was renovated in the 1980s and demolished after 2007. The wooden UGG elevator, built in 1953, was demolished in September 2017.

Custodial History:

Slide was in the possession of John Everitt before its donation to the SJ McKee Archives in 2007.

Scope and Content:

Item is an image of the Manitoba Pool Elevator Pool B at Killarney, MB. A portion of the United Grain Growers elevator is visible in the foreground.

Notes:

History/bio information:

<http://www.mhs.mb.ca/docs/sites/killarneyelevator.shtml>

Repro Restriction:

The SJ McKee Archives is the copyright holder for the John Everitt collection and as such is providing access to the John Everitt slide collection for educational and research purposes only. To publish, copy or otherwise use these images, written permission must be obtained from the SJ McKee Archives. Any issues arising from the use of an item is the responsibility of the persons desiring to use the item, as is the securing of any necessary permissions for use.

Arrangement:

Original order. Box 1 - Section Man Pool 1

Images





Snowflake Pool/Federal

<http://archives.brandonu.ca/en/permalink/descriptions14621>

Part Of: John Everitt collection

Description Level: Item

Item Number: JCE-0009

GMD: graphic

Date Range: August 1994

Material Details: plastic case

History /

Biographical:

Both elevators ceased commercial operations in 1981.

Custodial History:

Slide was in the possession of John Everitt before its donation to the SJ McKee Archives in 2007.

Scope and Content:

Item is an image of old Pool A and the new Pool B elevators at Snowflake, MB.

Notes: History/bio information: "Portrait of a Grain Elevator: Snowflake, MB" in Canadiana - artist: Christopher Walker, researcher: Ed Ledohowski, editor: George Sayer Bain.

Repro Restriction: The SJ McKee Archives is the copyright holder for the John Everitt collection and as such is providing access to the John Everitt slide collection for educational and research purposes only. To publish, copy or otherwise use these images, written permission must be obtained from the SJ McKee Archives. Any issues arising from the use of an item is the responsibility of the persons desiring to use the item, as is the securing of any necessary permissions for use.

Arrangement:

Original order. Box 1 - Section Man Pool 1

Images





New Pool at #1 and #10

<http://archives.brandonu.ca/en/permalink/descriptions14615>

Part Of: John Everitt collection

Description Level: Item

Item Number: JCE-0005

GMD: graphic

Date Range: November 1983

Material Details: Kodachrome slide

History /

Biographical:

Operated as Pool A, this wooden grain elevator was built by Manitoba Pool Elevators between 1983 and 1984. It was closed by 2007 and demolished by 2008.

Custodial History:

Slide was in the possession of John Everitt before its donation to the SJ McKee Archives in 2007.

Scope and Content:

Item is an image of the new Manitoba Pool Elevator at Brandon, MB, under construction. The elevator was located at highways #1 and #10.

Notes: History/bio information:
<http://www.mhs.mb.ca/docs/sites/brandonelevator2.shtml>

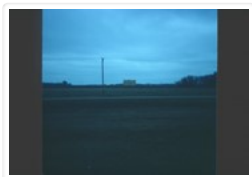
Repro Restriction: The SJ McKee Archives is the copyright holder for the John Everitt collection and as such is providing access to the John Everitt slide collection for educational and research purposes only. To publish, copy or otherwise use these images, written permission must be obtained from the SJ McKee Archives. Any issues arising from the use of an item is the responsibility of the persons desiring to use the item, as is the securing of any necessary permissions for use.

Arrangement:

Original order. Box 1 - Section Man Pool 1

Images





New Pool from #1

<http://archives.brandonu.ca/en/permalink/descriptions14617>

Part Of: John Everitt collection

Description Level: Item

Item Number: JCE-0011

GMD: graphic

Date Range: April 1984

Material Details: Kodachrome slide

History /

Biographical:

Operated as Pool A, this wooden grain elevator was built by Manitoba Pool Elevators between 1983 and 1984. It was closed by 2007 and demolished by 2008.

Custodial History:

Slide was in the possession of John Everitt before its donation to the SJ McKee Archives in 2007.

Scope and Content:

Item is an image of the new Manitoba Pool Elevator at Brandon, MB as seen from #1 highway.

Notes: History/bio

information:<http://www.mhs.mb.ca/docs/sites/brandonelevator2.shtml>

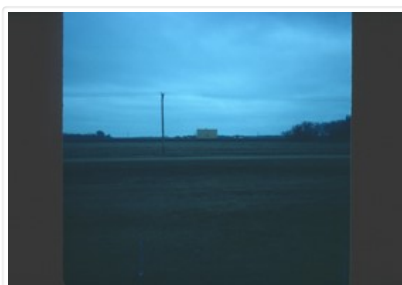
Repro Restriction:

The SJ McKee Archives is the copyright holder for the John Everitt collection and as such is providing access to the John Everitt slide collection for educational and research purposes only. To publish, copy or otherwise use these images, written permission must be obtained from the SJ McKee Archives. Any issues arising from the use of an item is the responsibility of the persons desiring to use the item, as is the securing of any necessary permissions for use.

Arrangement:

Original order. Box 1 - Section Man Pool 1

Images





Snowflake Fed/Pool

<http://archives.brandonu.ca/en/permalink/descriptions14620>

Part Of: John Everitt collection

Description Level: Item

Item Number: JCE-0008

GMD: graphic

Date Range: August 1994

Material Details: plastic case

History /

Biographical:

The elevator in the image is the Federal Elevator, constructed in 1962 from wood and equipment reclaimed from Federal Elevators in Fallison and Windygates that had been torn down. It became the new Snowflake Pool B Elevator (Manitoba Pool Elevators) in 1972 when the original Pool B Elevator was sold to a local farmer. The Pool B elevator ceased commercial operations in 1981.

Custodial History:

Slide was in the possession of John Everitt before its donation to the SJ McKee Archives in 2007.

Scope and Content:

Item is an image of the elevator at Snowflake, MB.

Notes: History/bio information: "Portrait of a Grain Elevator: Snowflake, MB" in Canadiana - artist: Christopher Walker, researcher: Ed Ledohowski, editor: George Sayer Bain.

Repro Restriction: The SJ McKee Archives is the copyright holder for the John Everitt collection and as such is providing access to the John Everitt slide collection for educational and research purposes only. To publish, copy or otherwise use these images, written permission must be obtained from the SJ McKee Archives. Any issues arising from the use of an item is the responsibility of the persons desiring to use the item, as is the securing of any necessary permissions for use.

Arrangement:

Original order. Box 1 - Section Man Pool 1

Images





Newdale

<http://archives.brandonu.ca/en/permalink/descriptions14618>

Part Of: John Everitt collection

Description Level: Item

Item Number: JCE-0013

GMD: graphic

Date Range: November 2003

Material Details: Kodachrome slide

History /

Biographical:

The central elevator in the image is Manitoba Pool Elevator Pool B, built in 1951. The annex on the right, formerly Pool C, was a former Lake of the Woods Milling Co. elevator built in 1925 and purchased by MPE in 1959. MPE moved it to the Newdale site in late 1979, at which point it was converted into an annex; the crib annex on the left of the image was built around the same time. The Pool B elevator was closed by Agricore in 2001 and demolished in 2004.

Custodial History:

Slide was in the possession of John Everitt before its donation to the SJ McKee Archives in 2007.

Scope and Content:

Item is an image of the Agricore (formerly MPE) elevator and annexes at Newdale, MB. Also known as the Reliance Grain Elevator.

Notes: History/bio information:
<http://www.mhs.mb.ca/docs/sites/sidneyelevator.shtml>

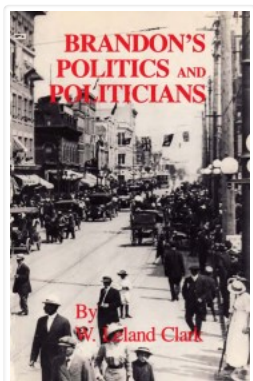
Repro Restriction: The SJ McKee Archives is the copyright holder for the John Everitt collection and as such is providing access to the John Everitt slide collection for educational and research purposes only. To publish, copy or otherwise use these images, written permission must be obtained from the SJ McKee Archives. Any issues arising from the use of an item is the responsibility of the persons desiring to use the item, as is the securing of any necessary permissions for use.

Arrangement:

Original order. Box 1 - Section Man Pool 1

Images





W. Leland Clark - research and teaching papers

<http://archives.brandonu.ca/en/permalink/descriptions10091>

Part Of: RG 6 Brandon University fonds

Description Level: Sub sub series

Series Number: MG 3 1.14.2

Accession Number: 16-2009

GMD: textual records

Date Range: 1970-1982

Physical Description: 60 cm textual records; 6 books

History /

Biographical:

See fonds level description (MG 3 1.14 W. Leland Clark) for history/bio information on W. Leland Clark.

Custodial History:

See fonds level description (MG 3 1.14. W. Leland Clark) for custodial history.

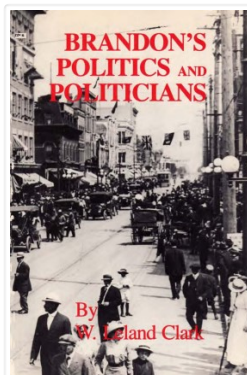
Scope and Content:

Sub sub series consists of primary sources related to Canadian agriculture in Western Canada from the Great War to the Great Depression drawn from the National Archives of Canada and the Provincial Archives of Manitoba; primary sources including interviews conducted by Dr. Clark for his PhD thesis and subsequent book titled Brandon Politics and Politicians; and various papers - published and unpublished by Dr. Clark, a few of his students, and other academics. Sub sub series also contains seven copies of Brandon Politics and Politicians.

Notes: A PDF version of this book is available. PDF courtesy Gordon Goldsborough, webmaster Manitoba History..

Storage Location: RG 6 Brandon University fonds
MG 3 Brandon University Teaching and Administration
1.14 W. Leland Clark

Documents



brandonpolitics.pdf

 Read PDF

 Download PDF