

S. J. McKee Archives



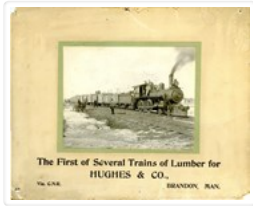
Elma Hughes

<http://archives.brandonu.ca/en/permalink/descriptions14242>

Part Of: Joseph H. Hughes collection
Creator: Photographer: Clark J. Smith, Brandon
Description Level: Item
Series Number: 3-1997.1
Item Number: 3-1997.1.51
Accession Number: 3-1997
Other Numbers: Hughes #53
GMD: graphic
Date Range: c.1950
Physical Description: 10" x 8" (b/w)
Material Details: on matting
Physical Condition: Adhesive on back of photograph
Scope and Content:
Photograph shows a portrait of an elderly woman with crimped hair and wearing glasses. The woman has been identified as Elma Hughes, wife of Willard J. Hughes.
Name Access: Elma Hughes
Subject Access: portraits
Storage Location: RG 5 photograph storage drawer

Images





First of several CNR trains of lumber for Hughes & Co.

<http://archives.brandonu.ca/en/permalink/descriptions14245>

Part Of: Joseph H. Hughes collection
Description Level: Item
Series Number: 3-1997.1
Item Number: 3-1997.1.54
Accession Number: 3-1997
Other Numbers: Hughes #55
GMD: graphic
Date Range: c.1900
Physical Description: 7.25" x 5.75" (b/w)
Material Details: on matting
Physical Condition: water marks on matting, holes in corners
Scope and Content:

Photograph shows CNR train No.44 carrying loads of lumber. Engineers pose with the locomotive. Several men pose on the railway tracks. Snow and ice appear in the ditch.

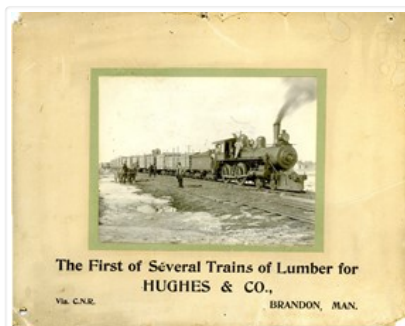
Notes: Writing on the front of the photograph reads: The First of Several Trains of Lumber for HUGHES & CO., Via C.N.R., Brandon, Man. Photograph is stamped on the back: Huhges & Co. Ltd., 1009 Princess Ave., Brandon, Man.

Name Access: Hughes & Co.
Canadian National Railway

Subject Access: trains
lumber
lumbering
lumber manufacturing
winter
Transportation

Storage Location: Hughes oversize drawer

Images





Hughes & Co. Lumber, founding members

<http://archives.brandonu.ca/en/permalink/descriptions14254>

Part Of: Joseph H. Hughes collection

Description Level: Item

Series Number: 3-1997.1

Item Number: 3-1997.1.63

Accession Number: 3-1997

Other Numbers: Hughes #56

GMD: graphic

Date Range: [1900s]

Physical Description: 9.5" x 7.5" (b/w)

Material Details: on matting

Physical Condition: Mat is water stained.

Scope and Content:

Photograph shows a group of 10 men wearing heavy coats posing in front of Hughes & Co. Lumber located at 152 10th Street.

Notes: Back of photograph is stamped: Hughes & Co. Ltd., 1009 Princess Ave., Brandon, Man. Writing on the back of the photograph reads: Founders of Hughes

Name Access: Hughes & Co. Lumber

Subject Access: Brandon business buildings & facilities before 1940
street scenes
portraits

Storage Location: Hughes oversize drawer

Images





Strathcona Block, H.Lamontagne & Co.

<http://archives.brandonu.ca/en/permalink/descriptions14255>

Part Of: Joseph H. Hughes collection
Creator: Photographer: Frank Gowen, Brandon
Description Level: Item
Series Number: 3-1997.1
Item Number: 3-1997.1.64
Accession Number: 3-1997
Other Numbers: Hughes #64
GMD: graphic
Date Range: 1905
Physical Description: 7.5" x 9.5" (b/w)
Material Details: on matting
Physical Condition: Mat is water stained, emulsive side is stained

Scope and Content:

Photograph shows the recently constructed Strathcona Block. H. Lamontagne & Co. Ltd., Wholesale, occupies the ground floor. Scaffolding is suspended from the north side of the building. Buildings have yet to be erected to the north and south sides of the Strathcona Block.

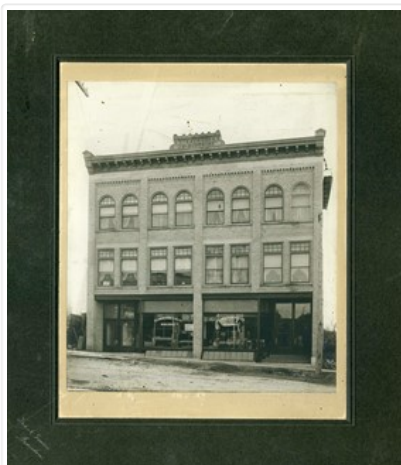
Notes: Back of photograph is stamped: Hughes & Co. Ltd., 1009 Princess Ave., Brandon, Man.

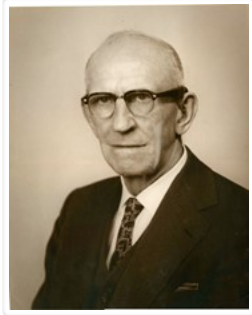
Name Access: Strathcona Block
H. Lamontagne & Co.

Subject Access: Brandon business buildings & facilities before 1940
street scenes
portraits

Storage Location: Hughes oversize drawer

Images





Willard Hughes

<http://archives.brandonu.ca/en/permalink/descriptions14256>

Part Of: Joseph H. Hughes collection

Description Level: Item

Series Number: 3-1997.1

Item Number: 3-1997.1.65

Accession Number: 3-1997

GMD: graphic

Date Range: [1960s]

Physical Description: 11" x 14" (b/w)

Physical Condition: Photograph is creased

Scope and Content:

Photograph shows a portrait of an elderly man wearing a three-piece suit and black-rimmed glasses.

Notes: Writing on the back of the photograph reads: Willard Hughes

Name Access: Willard Hughes

Subject Access: portraits

Storage Location: Hughes oversize drawer

Images



Brandon College Platoon

<http://archives.brandonu.ca/en/permalink/descriptions14257>

Part Of: Joseph H. Hughes collection

Creator: Photographer: Davidson Studio

Description Level: Item

Series Number: 3-1997.1

Item Number: 3-1997.1.66

Accession Number: 3-1997
Other Numbers: Hughes #81
GMD: graphic
Date Range: 1916
Physical Description: 13.5" x 10.5" (b/w)
Material Details: on matting
Physical Condition: Photograph beginning to separate from matting

History /

Biographical:

Brandon College established a Canadian Officer Training Corps (COTC) program in 1916 and had enough students for a platoon that would join the 196th Western Universities Battalion's B Company. COTC logs for in the SJ McKee Archives show that at least 40 men regularly attended classes on campus during the 1916 winter term.

The Brandon Daily Sun published the names of 60 potential platoon recruits before they headed to Camp Hughes to train in the summer of 1916. Although Lt. J.R.C. Evans spearheaded the training of the COTC enlistees at Brandon College, he was found medically unfit for overseas service. In his stead, the son of the college's founder, Lt. William Carey McKee, lead the platoon to Camp Hughes where they joined the 196th Battalion. Of the 60 recruits identified in the local paper, 20 would not survive the war, including Lt. McKee.

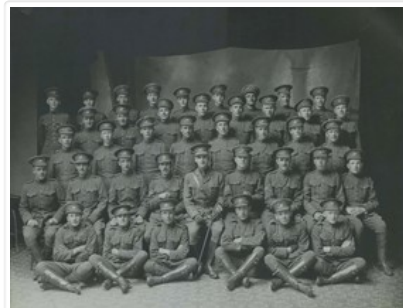
[ST/2016]

Scope and Content:

Photograph shows a group of 40 men wearing WWI uniforms. The men have the Canada general service cap badge on their headdress. The officer in the centre of the group (i.e., the man with the cane) is J.R.C. Evans. The group of men are likely members of the first Brandon College Platoon, which joined the 196th Western Universities Battalion.

Name Access: J.R.C. Evans
Subject Access: portraits
First World War
Great War
Storage Location: Hughes oversize drawer
Related Material: Daly House Museum
The Clark Hall Scrapbook

Images





Mrs. L. O'Neil

<http://archives.brandonu.ca/en/permalink/descriptions14258>

Part Of: Joseph H. Hughes collection

Description Level: Item

Series Number: 3-1997.1

Item Number: 3-1997.1.67

Accession Number: 3-1997

GMD: graphic

Date Range: [1800s]

Physical Description: 20" x 15" (b/w)

Material Details: on matting

Scope and Content:

Photograph shows an elderly couple posing for a formal portrait. The woman is wearing a black crepe dress. The man, who is bearded but not mustached, is wearing a black jacket.

Notes: Writing on the back of the photograph reads: Mrs. L. O'Neil?

Subject Access: portraits

Storage Location: Hughes oversize drawer

Images





Hughes family in Ontario

<http://archives.brandonu.ca/en/permalink/descriptions14266>

Part Of: Joseph H. Hughes collection

Description Level: Item

Series Number: 3-1997.1

Item Number: 3-1997.1.68

Accession Number: 3-1997

Other Numbers: Hughes #66

GMD: graphic

Date Range: 1868

Physical Description: 9.25" x 7.25" (b/w)

Material Details: on matting

Scope and Content:

Photograph shows a group of 14 individuals scattered throughout a yard of a two-storey brick home with an extension. An elderly woman can be seen in a wheelchair. Four women are wearing white gowns with long sleeves.

Notes: Writing on the front corner of the photograph reads: 1868

Subject Access: portraits

residences

building exteriors

Storage Location: Hughes oversize drawer

Images





Wheat City Business College Hockey Club

<http://archives.brandonu.ca/en/permalink/descriptions14267>

Part Of: Joseph H. Hughes collection
Description Level: Item
Series Number: 3-1997.1
Item Number: 3-1997.1.69
Accession Number: 3-1997
Other Numbers: Hughes #67
GMD: graphic
Date Range: 1912
Physical Description: 9.25" x 7.25" (b/w)
Material Details: on matting
Physical Condition: Photograph is water stained
Scope and Content:

Photograph shows a group of 10 men, eight whom are wearing sweaters with the letters WCBC applied across the chest. The goalie is seated in a wooden chair and wears his goalie pads and skates. The four other players in the front row are also wearing skates and have their hockey sticks.

Notes: Writing on the front of the photograph mat reads: Wheat City Business College Hockey Club, 1912

Name Access: Wheat City Business College

Subject Access: portraits
Hockey
sports people & activities
team sports
team photos

Storage Location: Hughes oversize drawer

Images



Motor Mart, Sioux City, Iowa

<http://archives.brandonu.ca/en/permalink/descriptions14268>

Part Of: Joseph H. Hughes collection



Description Level: Item
Series Number: 3-1997.1
Item Number: 3-1997.1.70
Accession Number: 3-1997
Other Numbers: Hughes #68
GMD: graphic
Date Range: [1920s]
Physical Description: 8.5" x 6.25" (b/w)
Material Details: on matting
Physical Condition: Matting is torn, photo is scratched

History /

Biographical:

The Motor Mart Building in Sioux City, Iowa, is listed on the United States National Park Service's National Register of Historic Places. The State Historical Society of Iowa submitted the application in 1993. The building is an architectural example of the Commercial Style of the late 19th and early 20th Century American Movement designed by E.J. Henriques and C.F. Lytle Co. The building has a concrete foundation, brick walls, and a concrete roof. The Turner Mushroom System, a patented structural system involving a poured reinforced concrete framed, was used in the construction of the building. (Source: National Register of Historic Places Registration Form [online], focus.nps.gov/pdfhost/docs/NRHP/Text/93000330.pdf)

Scope and Content:

Photograph shows a four-storey brick building, with a large showroom on the main floor. Inside, automobiles can be seen on display. Banners in the store windows read White Moon. The photograph was taken at night and exterior lights decorate the building.

Notes: Writing on the back of the photograph reads: Motor Mart, Sioux City, Ia., Lytle [?] Co. Archts., Mushroom Sys. truout.

Subject Access: Transportation
automobiles
motor cars
car lots

Storage Location: Hughes oversize drawer

Images





S.S. Warkworth at Churchill

<http://archives.brandonu.ca/en/permalink/descriptions14275>

Part Of: Joseph H. Hughes collection
Description Level: Item
Series Number: 3-1997.1
Item Number: 3-1997.1.77
Accession Number: 3-1997
Other Numbers: Hughes #70
GMD: graphic
Date Range: 1931
Physical Description: 9.5" x 7.5" (b/w)
Material Details: on matting
Physical Condition: Photograph and matting is stained
Scope and Content:

Photograph shows the S.S. Warkworth at the port in Churchill.

Notes: Writing on the back of the photograph reads: Churchill 1931, Sept 19th 1931. S.S. Warkworth from top of storage.

Name Access: SS Warkworth
Churchill, Manitoba

Subject Access: steamships
Transportation

Storage Location: Hughes oversize drawer

Images





Corner of 10th Street and Princess Avenue, Brandon, Manitoba

<http://archives.brandonu.ca/en/permalink/descriptions8387>

Part Of: Joseph H. Hughes collection

Description Level: Item

Series Number: 3-1997.1

Item Number: 3-1997.1.14

Accession Number: 3-1997

GMD: graphic

Date Range: c. 1930

Physical Description: 8 " x 10" (b/w)

Physical Condition: good

Scope and Content:

Photograph shows the intersection of 10th Street and Princess Avenue, Brandon, Manitoba. View is facing northwest along west side of the 100-block of 10th Street. A stationary policeman/divider is at the centre of the intersection. Visible businesses include: Doig's, Plaza Shoe Shop, and Cambridge Clothes Shop. A horse-drawn sled is parked in front of Doig's store. The Olympia Block, Cecil Hotel, and CPR Station are visible in the background.

Name Access: Doig's

Plaza Shoe Shop

Cambridge Clothes Shop

Alexandra Block

Strathcona Block

10th Street

Princess Avenue

Subject Access: downtowns

street scenes

Brandon business buildings & facilities before 1940

building exteriors

Transportation

Storage Location: RG 5 photograph storage drawer

Images

