

S. J. McKee Archives



Brandon Wheat Market at Pacific Avenue and 10th Street

<http://archives.brandonu.ca/en/permalink/descriptions13795>

Part Of: Fred McGuinness collection
Description Level: Item
Series Number: McG 9
Item Number: 20-2009.104
Accession Number: 20-2009
GMD: graphic
Date Range: 1885
Physical Description: 9.25" x 7.25" (b/w)
Material Details: On matting
Physical Condition: Photograph is creased and scratched

Scope and Content:

Photograph shows the Brandon Wheat Market along Pacific Avenue on November 30, 1885. Farmers can be seen driving wagon teams loaded with bags of grain in line on Pacific Avenue from 10 Street to at least 7th Street. On the north side of Pacific Avenue the CPR Land Office and grain elevators are pictured. On the south side of Pacific Avenue, the general merchant/hardware store Bower, Blackburn, Mundell & Porter is situated on the corner of Pacific Avenue and 10th Street. A 10th Street sign is affixed to the merchants' store. On the east side of the general store, Edie House, the Grand View Hotel, and a Farmers' boarding and lodging house can be seen. Most of the buildings appear to be woodframed except for the Grand View, which is constructed of brick. Sidewalks appear to be in place on the south side of Pacific and snow dusts the streets. A baby swathed in winter clothing sits in a pram/baby carriage in front of the general store.

Notes: Writing on the front of the photograph reads: Novemeber 30th, 1885,
Brandon Wheat Market

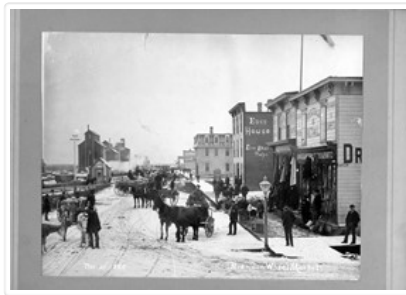
Name Access: Bower, Blackburn, Mundell, & Porter
Edie House
Grand View Hotel
Pacific Avenue
10th Street
CPR Land Office
Brandon Wheat Market

Subject Access: horses
wagons
Transportation
street scenes
hotels
markets
Grain elevators
downtown
Brandon business buildings & facilities before 1940
store exteriors
winter
general stores
hardware stores
children

Storage Location: McGuinness oversize storage drawer (1-2015)

Related Material: Lawrence Stuckey collection 1-2002.3.1C3

Images





St. Paul's Presbyterian Church interior

<http://archives.brandonu.ca/en/permalink/descriptions10117>

Part Of: RG 12 Brandon and Area Photograph Collection

Description Level: Item

Series Number: 2

Item Number: BAPC 2.4

GMD: graphic

Date Range: [1900-1901]

Physical Description: 4" x 6" (b/w)

History /

Biographical:

St. Paul's Presbyterian Church, which became St. Paul's United Church, and then Central United Church was located at 327 8th Street in Brandon, MB. The original church was destroyed by fire in 1986.

Scope and Content:

Photograph shows the interior of the St. Paul's Presbyterian Church in Brandon, MB.

Notes: History/Bio information provided by Jim Stettner, Organ Historical Society Database (2022).

Name Access: St. Paul's Presbyterian Church

Subject Access: Church buildings

churches

public buildings

Storage Location: BAPC photograph drawer

Images





Great Northern Railway tracks near Bunclody

<http://archives.brandonu.ca/en/permalink/descriptions10154>

Part Of: RG 12 Brandon and Area Photograph Collection

Description Level: Item

Series Number: 3

Item Number: BAPC 3.8

GMD: graphic

Date Range: [19--]

Physical Description: 4.25" x 2.75" (b/w)

History /

Biographical:

Bunclody, MB was located near Souris, MB. The bridge in question crossed the Souris River.

Custodial History:

Photograph was donated by a "Mrs. Wilson" in 1989.

Scope and Content:

Photograph shows railroad tracks (presumably Great Northern Railway tracks near Bunclody) during winter. Also visible are an elevator, outbuildings and part of a train sitting beside the tracks.

Name Access: Great Northern Railway

Bunclody, MB

Subject Access: rail transportation

Grain elevators

trains

Storage Location: BAPC photograph drawer

Images

