

S. J. McKee Archives



Charles Whitehead

<http://archives.brandonu.ca/en/permalink/descriptions9819>

Part Of: RG 11 Lawrence Stuckey fonds

Description Level: Item

Series Number: 3.1

Item Number: 1-2002.3.1M30(1)

Accession Number: 1-2002

GMD: graphic

Date Range: [18-?]

Physical Description: 3 1/2" x 5"

Material Details: Negative

Custodial History:

For custodial history see the collection level description of the Lawrence Stuckey collection.

Scope and Content:

Charles Whitehead, President of Provincial Exhibition 1882 - 1896

Notes: Mr. Stuckey originally placed 32 negatives in one envelope labeled "M – Presidents of Fair Boards 1882 – 1972"; We have separated and renumbered these negatives as M30(1) to M30(32) inclusively; Records of the Provincial Exhibition Association are held in the S.J. McKee Archives (RG2) including photos of board members; [This negative was produced using a previously published image. P.E. 10/07/09].

Name Access: Charles Whitehead

Presidents of Fair Boards

Subject Access: fairs

exhibitions

Provincial Exhibitions

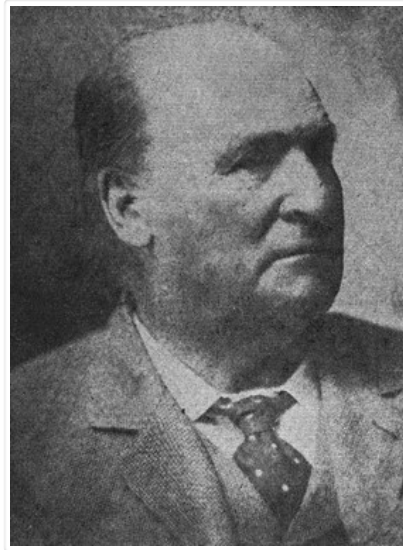
officials

Brandon Exhibitions & Facilities

Repro Restriction: The McKee Archives is the copyright holder for the Stuckey materials.

Storage Location: Lawrence Stuckey collection

Images



Jack Stothard collection

<http://archives.brandonu.ca/en/permalink/descriptions4231>

Part Of: RG 5 Western Manitoba Manuscript Collection
Description Level: Collection
Accession Number: 1-2003, 12-2006, 8-2007, 8-2008, 18-2008, 11-2009, 4-2012, 4-2013, 8-2016
GMD: multiple media
Date Range: ca. 1900s, 2001-2003, 2007, 2008, 2016
Physical Description: 30 cm textual records
9 b/w photograph
Physical Condition: Good

History /

Biographical:

Jack Stothard was born on February 16, 1932 in Brandon, MB. He attended public schools in the city (Central School, Park School, and Earl Oxford) and graduated from Brandon Collegiate Institute (BCI). Stothard married Velma Pollock in 1957 and together they had two daughters: Debra and Kimberly. Stothard was employed in the plumbing and heating business until 1960, when he joined Manitoba Hydro. In the course of his employment with Manitoba Hydro, he became Station Superintendent of the Brandon Generating Station. Stothard retired in 1995. Stothard was a member of the Canadian Numismatic Association, the Canadian Association of Token Collectors and the Toronto Postcard Club. Jack Stothard died on November 3, 2021 in Brandon, MB.

Custodial History:

Accession 1-2003 was in the possession of Stothard until donated to the McKee Archives in 2003. Accession 12-2006 was acquired by Lawrence Stuckey at some point after the photograph was taken. Stuckey later sold a copy of the photograph. This copy was later acquired by Jack Stothard in the course of his collecting of Brandon postcards. Stothard donated the image to the McKee Archives in 2004. Accession 8-2007 was prepared by Jack Stothard in the course of 2007. He provided a copy to the Archives upon its completion. Accession 8-2008 was in the possession of Fred McGuinness until he gave it to Jack Stothard in February 2008. Stothard donated the records to the McKee Archives on February 12, 2008. Accession 18-2008 was donated to the McKee Archives by Stothard on August 18, 2008. Accession 11-2009 was donated to the McKee Archives by Stothard on February 20, 2009. Accession 4-2012 was donated to the McKee Archives by Stothard on August 24, 2011. Accession 4-2013 was donated to the McKee Archives by Stothard in March 2013. Accession 8-2016 was donated to the McKee Archives by Stothard on January 21, 2015.

Scope and Content:

Accession 1-2003 contains brief research reports prepared by Stothard on various topics concerning historical Brandon. These include: a listing of hotels, inns and motels that have operated in Brandon since the 1880s; reports dealing with the Café Aagard, Central United Church, the 1913 Dominion Exhibition, Brandon, the Empire Hotel, Brandon's Central Steam Heating System, the Post Office and the Clement Block. It also contains one booklet: Facts About Brandon: An Industrial Survey of the City of Brandon. Winnipeg: Department of Industry and Commerce [n.d.]

Accession 12-2006 consists of one photograph of the Great Northern Engine 208, built by Rogers Locomotive Company 1887. Cylinders 18 x 24, Drivers 63". G.N. line Church's Ferry, N.D. to Brandon, Manitoba. Opened 1906, Closed 1936.

Accession 8-2007 consists of a brief typed report entitled "The Day the Lights Went Out in Brandon - Strike of 1919" by Jack Stothard. Document provides an account of the sources and delivery of hydro electric power to Brandon beginning in the early 1900s and the brief power outage at the beginning of the Brandon General Strike May 25, 1919.

Accession 8-2008 consists of "The Brandon Sun Challenge Cup" ledger, which contains two b/w photographs, newspaper clippings and information on the history and first race (1908) of the cup; 3 additional b/w photographs of different races; and the Brandon Old Timers Association record book (c. 1900).

Accession 18-2008 consists of a copy of Stothard's Brandon Postcards index. The index is divided into various sub-headings and consists of colored reproductions of postcards in Stothard's collection. The index contains pages that were discarded by Stothard as he updated his inventory, therefore the index is only up to date as of August 18, 2008.

Accession 11-2009 consists of a typed research report entitled "Brandon Police Department Stations and Locations" by Jack Stothard. The report outlines the location of the Brandon Police Department from 1882 - 2008, and also includes a section on "What the Future Holds."

Accession 4-2012 consists of pages for Stothard's Brandon Postcards index (18-2008) and a photocopy of a Brandon Municipal Railway ticket.

Accession 4-2013 consists of eight binders of handwritten notes/facts about Brandon compiled by Jack Stothard. The notes are a collection of names, places, things, events and items related mostly to the first 100 years of Brandon (1882-1982), although the notes continue into the 2000's. Some notes centre on the late 1930's to early 1950's during the period of Stothard's youth. The information in the binders was taken from a variety of publications, while some notes are Stothard's own comments. A list of sources, as well as a cross reference index for all eight binders, can be found in Book No. 1.

The accession includes: Book No. 1 - Notes of Brandon (A to B); Book No. 2 - Notes of Brandon (C to F); Book No. 3 - Notes of Brandon (G to O); Book No. 4 - Notes of Brandon (P to Z); Book No. 5 - Notes of Brandon: Churches, Hostpitals, Hotels; Book No. 6 - Notes of Brandon: Police Department, Fire Department; Book No. 7 - Notes of Brandon: Brandon City Council, City of Brandon etc.; Book No. 8 - Notes of Brandon: Brandon College/University, Brandon Schools, ACC, Brandon School Board. Accession also includes pages from Stothard's Brandon Postcards index (18-2008).

Accession 6-2016 consists of local history books, pamphlets, bakery tokens, local magazines, one binder containing handwritten notes/facts about Brandon compiled from the Brandon Sun's "Looking Back" column, and an accordian file box containing newspaper clippings about Brandon.

The accession includes the following local history books: Betty Watson's "One Day in Brandon Manitoba 9/9/99" (Brandon, Manitoba: Bart Art Books, 1999); P.N. Breton's "Popular Illustrated Guide to Canadian Coins, Medals, & .& .," (Winnipeg: Canadian Numismatic Publishing Institute, 1963 [reprint]); "Facts About Brandon: An Industrial Survey of the City of Brandon," (Province of Manitoba: Department of Industry and Commerce, [1946]); The Polish Gymnastic Association Sokol's "75th Anniversary: From the Past to the Future!" ([Brandon, Manitoba: Polish Gymnastic Association Sokol, 1988]); and Brandon Kinsmen Club's "'Together...Once Again': A History of the Kinsmen Club of Brandon, Manitoba, 1925-1975" (Brandon, Manitoba: The Historical Committee of the Kinsmen Club of Brandon, 1975).

Pamphlets and magazines include: Brandon Generating Station (1957) and (1969), The Brandon Quota Club presents...A Century in Revue (1982), Canadian Rail No. 168/July-August 1965 [featuring Brandon Municipal Railway], Prairie City Issue No. 3/1994, and Prairion May/June 1997.

The binder is titled Book No. 9 - "Year by year: miscellaneous items from 1969 to 2000"; an asterik (*) indicates notes have been made on each subject or item in the other Books. Each section is housed in

The files in the accordian file box have been rehousing and include the following topics: banks, Brandon 125 beer, Behlen Industries, breweries, Brandon Shoppers' Mall, calendars, Canadian Motors Ltd., Canexus/Nexen, Canada Games - Summer and Winter, Canadian Tire, CKX Radio & TV/CKLQ, Corral Centre, flour mills, hospitals, Keystone, Maple Leaf, Fred McGuinness, miscellaneous, A.E. McKenzie, people, railways, Simplot, Westman Recycling (new facility), weather-storms-floods, and extra copies of postcards.

Notes: Description by Christy Henry. Accession 4-2013: Book No. 1 contains a photocopied photograph of Aagaard's Cafe, photographs of the Dominion Bank and Barney's Drive Inn and a photo reproduction of the Bass Building. Book No. 2 contains a photograph of the Provincial Goal. Book No. 3 contains photographs of T. Eaton Company (4 construction photos) and a photo reproduction of tents on the Exhibition grounds (c. 1940). Book No. 4 contains photoraphs of the Oak Theatre and Western Motors. There are also photopied photographs of The Fun Shop.

Name Access: Jack Stothard
Cafe Aagard
Great Northern Railway
Aagaard's Cafe
Lunch Counter
A-4 Military Camp
Alcoholism Foundation of Manitoba

Amberwood Village
Anglo Canadian Oils Ltd.
Applebee's Neighbourhood Grill & Bar
The Brandon Armoury
Army & Navy Store
Art Gallery of Southwestern Manitoba
Assiniboine River
Atom-Jet Industries Ltd.
Aub's B.A. Service Station
Frederickson's B.A. Service Station
A&W Restaurant
A&W Drive-In
Ayerst Organics Ltd.
Bank of British North America
Bank of Hamilton
Bank of Montreal
Bank of Nova Scotia
Canadian Bank of Commerce
Canadian Imperial Bank of Commerce (CIBC)
Dominion Bank
Imperial Bank of Canada
Merchants' Bank of Canada
The Northern Bank
Royal Bank of Canada
Toronto Dominion Bank (TD Bank)
Union Bank of Canada
Barney's Drive Inn
Barney's Shoe Shine
Bass Building
Bass families
Beacon Lunch
Behlen Industries/Behlen-Wickes Co. Ltd.
Belair Chinese Restaurant
Belvedere Apartments
Beresford Lumber Co.
Bertrands Block
Bertrand & Company
Beverage Services Limited
Coca-Cola Bottling Company
Dr. Wilfred Bigelow
Bing Jukes Drive Inn
Binkley Motors
Donald "Tiny" Bird
Blackwood's Ltd.
Blackwood Beverages Ltd.

Borbridge Block
Boreham Park Apartments
Bower's Esso Service
The Brandon Bowl
Recreation Bowling Alleys and Billiard Room
Thunderbird Bowl
Marsh Varcoe
Woodbine Alleys Ltd.
Box Brothers Ltd.
Braecrest Estates
Brandon Airport
Brandon Aero Club
Brandon Flying Club
Brandon Allied Arts Centre
Brandon Automobiles (1959) Limited
Brandon Binder Twine Company
Brandon Brewing Co.
Brandon Business College
Brandon Chamber of Commerce
Brandon Clinic
First Street Plaza
The Brandon Club
Brandon Consumer Co-operative Ltd. (Co-op)
Brandon Construction Company Ltd.
Brandon Correctional Institute
Brandon Jail
Brandon Creamery & Supply Co. Ltd.
Brandon Creamery & Supply Co.
Brandon Curling Club
Brandon Eagles Gymnastics Centre
Brandon Electric Light Company
Manitoba Power Company
Brandon Felt Works
Brandon Fire Engine Co.
The Brandon Fruit & Procude Co. Ltd.
Brandon Gallery Shopping Centre
Town Centre
Brandon Golf & Country Club
Brandon Hardware Co. Ltd.
Ashdown's hardware
Stylrite Hardware
Brandon Heating and Plumbing
Brandon Houseing Co-operative Ltd.
Aspen Woods
Brandon Humane Society

Brandon Machine Works
Brandon Municipal Street Railway
Brandon Museum Inc.
Daly House Museum
Brandon Musical Supply Company
Brandon Packers Ltd.
Brandon Scrap Iron & Metal Recycling Ltd.
Brandon Ski Club
Mt. Glenorky Ski Club
Brandon Stock Car Club
Brandon Sun
The Sun Printing Co.
Brandon Tennis Club
Brandon Tourist Camp
Brandon Transit Ltd.
Brandon Transit System
Handi Transit
Brandon Woolen Mills
Metev Woolen Mills
Bliss Building
Brazzell Motors
Brentwood Village Mobile Home Court
Breslauer & Warren Jewelers
First Street Bridge
1st Street Bridge
Eighteenth Street Bridge
18th Street Bridge
Daly Overpass
Thompson Bridge
Eighteenth Street Overpass
18th Street Overpass
8th Street Bridge
9th Street Bridge
Eighth Street Bridge
Pedestrian Bridge
British Commonwealth Air Training plan
British Commonwealth Air Training Plan Museum
Bockie-Donovan
Roy Brown
La Plant Block
Fraser Block
Syndicate Block
Laplont Block
Johnson & Company Hardware
Zink Block

Yukon Block
Burchill & Howey
Burns Foods Ltd.
Burns Meats Ltd.
Bus Depot
Greyhound Bus Lines
Grey Goose Bus Lines
MacArthur & Son Ltd.
CDC Home & Leisure Centre
Campbell & Campbell Building
Campbell & Ferguson Building
Canada Safeway Ltd.
Canada Summer Games
Canada Winter Games
Canadian Brown Steel Tank
Canadian Steel Tank Ltd.
Canadian Mental Health Association
Canadian Motors Ltd.
Canadian National Railway (CNR)
Canadian Order of Foresters
Canadian Pacific Railway (CPR)
Canadian Phoenix Insurance Co.
Canadian Stover Gasoline Engine Co.
Canadian Tire Store
Cancade Co. Ltd.
Cancade Bros.
Cancade Bros. Ltd.
Cancade Company
Cando Contracting Ltd.
Cargill Grain Company
Central Community Centre
Central Park Lodge
Valleyview Care Centre
Central Sheet Metal Works
Child & Family Services of Western Manitoba
The Children's Aid Society
Chrest's Dry Cleaners
Chrest family
Christie's Bookstore
Christie's School Supply
Christie Grant Store
Sir Winston Churchill Park
Circle Eight Drive Inn
City Cafe
City Golf Course

CKLQ
CKX
Clark Leatherdale Funeral Home
Clement Block
Cockshutt Plow Co.
Codville & Co.
Commodore Bakery Ltd.
Trent's Bakery
Coldwell Block
Coronation Park
Jubilee Park
Corral Centre
The Country Kitchen Restaurant
Aunt Sarah's Family Restaurant
Country Style Donuts
Court House
Crane Limited
Crane Steel Structures Ltd.
Crang's Grocery & Confectionery
Dairyworld Foods
Creelman's Shoe Store
Cumming & Dobbie
Curran Park
Curtis Block
Yaeger Block
Daymin Court
Bell Block
De Bruyn & Verhoef Woodworks Ltd.
De Fehr Furniture
Denis Prefab Ltd.
Diamond Waterworks
Dinsdale Cartage & Storage (1968) Ltd.
Dinsdale Park
Doig & Robertson
Rankin & Co.
Doig, Rankin & Robertson
Doig's Store Ltd.
Double Bar S Burger & Dairy Ranch
The Drewry's Ltd.
Alexander Brown
Brown's Drug Store
Dufresne Furniture & Appliances
Dutch Mill Bakery
East End Community Centre
Eastern Access Route (Highway 110)

Eaton's of Canada
T. Eaton Company
Edrans Brandon Pressed Brick Co.
Eleanor Kidd Park
Eleanor Kidd Gardens
W.A. Elliott
T.E. Elviss Company
Empire Brewing Co. Ltd.
Bell Bottling Co.
Esquire Dance Hall
Connaught Hall
Evans, Matheson & Associates
Experimental Farm
Brandon Research Station
Fairview Personal Care Home
Feed Rite Mills Ltd.
Federal Pioneer Ltd. (FPE)
Federated Co-operatives Ltd.
Fedoruk Groceteria
Flash Barber Shop and Beauty Salon
Alexander Fleming
Fleming's Drug Store
Fleming Block
Fleming's Well
Fort Brandon Museum
A.C. Fraser & Co.
Fraser & Ross
Fred's Dry Cleaners
Frost & Wood
Brockie Funeral Home
Campbell & Campbell
Vincent & Macpherson
Galaxy Computer Systems
George's Food Bar
George Jimas
Gidding's Store
Gillis & Warren Ltd.
Golden Gate Cafe
Gooden's Men's Wear
Grand Stand
Grand Valley Place
The Great West Coal Copmany Ltd.
Great Western Outerwear & Sportswear Ltd.
Green Acres Community Centre
Green Acres Lodge

Green Acres subdivision
Habitat for Humanity
B.J. Hales Natural History Museum
Hamilton and Jones Ltd.
Hanbury Manufacturing Co.
Hanbury House
T.M. Harrington
Harry's Ukrainian Kitchen & Steak House
Hedges Trucking
Heise Block
Heritage Co-op 1997 Ltd.
Highland Park Mobile Home Estate Ltd.
Hillcrest Place Personal Care Home
Hillside Town Houses
Manitoba Infrastructure & Transportation
Highways Department
Hobbs Manor
Home Development Co. Ltd.
Home Estates Ltd.
Home Hardware
Hopkins Bakery
Horner's Busy Corners
Hornor's Busy Corners
Paterson House
Matheson House
Villa Louise
Row House
Hudson House
Casa Maley
Hughes & Long
Hughes & Co.
Husky Oil & Refining Ltd.
Husky Travelcentre
Husky House
Locomart
North Hill IGA
West End IGA
Sobey's
Immigration Hall
Imperial Square
Indian and Metis Friendship Centre
International Harvester Co. of Canada Ltd.
Inventronics Ltd.
Jacobson and Greiner Ltd.
J&G

The Jo-Ann Accessory Shop
John Deere Plow Company
Johnson's Cafe
Johnson's Hardware Store
Kam Lung Restaurant & Cocktail Lounge
Martin Kavanagh
Keg Steakhouse & Bar
Kelly Block
Kelly & Co.
P.A. Kennedy Co. Ltd.
Keystone Centre
Kinsmen Club
Kinsmen Kiddies Korner
Kinsmen Centennial Swimming Pool
Kinsmen Outdoor Skating Rink
Kinsmen Memorial Stadium
Kinsmen Little League Stadium
Kin Village
Kinsmen Zoo
Kip's Service Station
Brigadier General James Kirkcaldy
Kirkcaldy Heights (North Hill) sub-division
Kiwanis Club
Kiwanis Swimming Pool/Paddling Pool
Kmart
Knowlton's Boot Shop
S.S. Kresge Co. Ltd.
Kullberg's Furniture Store
Lake Brandon
Land Titles Office
Lark Hill sub-division
Larry's Studio
Lawson Lodge
Prairie Oasis
Frank Lawson & Sons
Leech Printing
Lee's Implements Ltd.
Brandon Public Library
Centennial Library - Arts Centre
Western Manitoba Regional Library
Lindenberg Brothers Limited
Linden Lanes
Lions Club
Lion's Manor
Westman Lion's Manor Inc.

Linden Lanes Shopping Centre
Red & White Store
Lyceyn Tea Room
MacArthur Transportation Co.
Soo-Security Motorways Ltd.
M.F. MacDonald
Macey Foods Ltd.
G.C. (Curly) MacKay
MacLeods Store
Magnacca Enterprises
Manitoba Centennial 1970
Manco
Manitoba Cooperative Dairies Ltd.
Manitoba Dairy and Poultry Cooperative Ltd.
The Manitoba Hardware & Lumber Co. Ltd.
Manitoba Emergency Services College
Manitoba Engines Ltd.
Manitoba Felt & Yarn Works - Brandon
Manitoba Government Building
Manitoba Housing & Renewal Corporation
Manitoba Housing Authority
Manitoba Motor Transit Ltd.
Manitoba Pool Elevators
Agricore
Manitoba Public Insurance Corporation
Autopac
MPI
The Manitoba Windmill & Pump Co. Ltd.
Brandon Gas & Power Co. Ltd.
Maple Leaf Flour Mills
Maple Leaf Pork
Maple Leaf Meats
Maple Leaf Foods
The Maples
Mark's Work Wearhouse
D. Marshall
Massey-Harris Co. Ltd.
Massey-Ferguson Building
Massin Furs
Frank Massin & Son Hide & Furs
Masonic Temple
Dr. J. Murray Matheson
McCallum Jewellers
McCallum Nursing Home
McCall Frontenac

Texaco
McDiarmid & Clark
McDonald & Foreman
John A. McDonald & Son
McDowell & Doke Tinsmiths'
McGregor's Livery Sale & Boarding Stable
J.D. McGregor
Malcolm McAdam McGregor
Fred McGuinness
A.E. McKenzie Seed Co. Ltd.
A.E. McKenzie House
Meadowlark Campground
Memories Chapel and Pre-planning Centre
Metropolitan Cafe
Metropolitan Store
Meyers Norris Penny
Miladi's - The House of Ladies' Quality Apparel
Mitrou Cafe & Candy Company
Modern Dairies
Monterey Estates
Sunridge Homes Ltd.
Morgon Motors
Moxie's
Blue Hills restaurant
Perkin's Restaurant
William Muir General Grocer
Murray Chev Olds-Cadillac Ltd.
Mutter Brothers
Nation & Shewan
National Store
Neale, Stothard & Chapman
The Newmount Medical Clinic
Nexen Chemicals Inc.
Canexus Ltd.
New System Store
North End Community Centre
Northside Mazda
Oddfellows Corner
Ogilvie Co.
Old Men's Home
Charlton Lodge
Olympia Cafe
Orange Hall
Grand Orange Lodge
Orchard Hardware Co.

Oshkosh Filter and Softener Co.
Pacific 66 Service Station
Palladium Dance Hall
Park Community Centre
Parker's Restaurant
Charlie Coyote's
Park View Apartments
George A. Paterson
Patmore's
Paul's Hauling Ltd.
A.E. McKenzie
Jack Hawson
Christopher David Mitrou
A. Reginald McDiarmid
Tony Macialek
Alex Mowat
David Weiss
Joseph Whitehead
Steward Shultz
Harry Cater
Charles Pilling
Robert Coombs
William Henderson
Arthur Johnson
George W. Noble
T.J. Beaubier
Harry Brown
Frank Massin
H.L. Patmore
Jack MacArthur
Flora Cowan
P.A. Kennedy
George Fitton
William Ferguson
Jack Coleman
A.E. Smith
J.C.P. Mitchell
Joseph Boyarski
W.T. "Bud" Higgins
Colonel Charles Whillier
Benjamin Hales
Fred Young
Wilfred Bigelow
Gabriel Charles (Barney) Mollot
E.J. Tyler

Pierre Cancade
George Sykes
G.R. Rowe
George Bass
Ritchie (Bob) Macpherson
Leslie Alexander McKay
Herbert Samuel Sharpe
Tom Ryles
Harold George Dinsdale
Paul Leon Regis Cancade
Eleanor Kidd
Cecil Webb
Edmond Fotheringham
Roy B. Hunter
Jack Donnelly
Ian M. Brown
Charles Goucher
Lenton James Rust
Harold B. Smith
Milton Tinline
Keith Hurst
Ernest Jerrett
Pearl Treleaven
Hugh Rice
Cec Leech
William Gooden
William Samuel Gooden
Sam Wong
George Mason Henderson Bain
William Webster Fotheringham
Alex McPhail
Richard Patmore
Sandy Patterson
J.R.C. Evans
John Shurb
Joseph Frederick
Ronald Relf
William Speakman
David Norris
Myheer Crystal
Mrs. Joseph Whitehead
Gus Hendzel
Stuart Craig
Krug Crawford
Walter Hutchings

Lorne Duncan McDonald
Max Szturm
Henry Perdue
Samuel Harris
Charles Lightbody
Boom Cristal
Russell Fedoruk
James Creighton
Jack Kullberg
D.R. MacKay
W. Norman Hargreaves-Mawdsley
Reg Poole
Stephen William Bass
A.B. Downing
Ernestine Whiteside
Albert St. Clair Rumball
Alfred Veale
Clive Porteous
G.T. McNeil
J. Stuart Thompson
William Bertrand
Stephen Magnacca
Charles Unicume
Franklin Williamson
P.J. Harwood
Donn Mitchell
David Brownridge
George Mutter
J.E. Matthews
Mary Waddell
Alfred James Eamer
Herbert Stuart
Curly MacKay
Betty Gibson
Louisa Eagle
Ewart Murray
Marion Doig
Arthur Gordon Buckingham
Ernest Christie Whitehead
Daniel Cristall
Gordon Sefton
Robert Brockway
H.O. McDiarmid
Glen Fowler
Arthur Augustus Harris

James Munro
Thomas Stark
Howard B. Smith
Reginald Edward Unicume
Elwood Gorrie
James "Skip" McFarlane Mitchell
Turk Broda
Henry Neudorf
John Boyd Craig
Walter Dinsdale
A.B. Knowlton
John R. Brodie
Walter Shillinglaw
Zena Hurst
H. Vincent Kidd
People's Market Place
Perkins Family Restaurant
Pizza Hut
Pizza Place
Planet KIA
Ponderosa Steak House
Pool Packers
The Porteous Manufacturing Company
Princess Auto Ltd.
Princess Park Apartments
Princess Towers Apartments
Provincial Building
Federal Building
Pue's Interior Furnishings Ltd.
Quality Groceteria
Queen's Court
Queen Elizabeth Park
Ravenscourt Apartments
R.C.A.F. No. 2 Manning Depot
R.C.A.F. No. 12 Service Flying Training School
Brandon Rec Centre
Red Cross Drug Store
Rehab Industries of Western Manitoba
Reliance Machine and Motor Company
Rendering Plant
Ressor's Jewellery Store
Richmond Gardens Apartments Ltd.
Richmond Shoe Store
Ricki's Ladies' Ready to Wear Store
The Ricksha Restaurant

Rideau Park
Rideau Park Personal Care Home
Ritz Cafe
Riverbank Discovery Centre
Riverheights Terrace
Riverview Curling Club
Robins Donuts
Rosenman's Furniture
Royal Canadian Legion Brandon Branch No. 3
Royal Canadian Legion Wheat City Branch No. 247
RCMP
Safety Service Station
Don Gamble
Sander's Drug Store
Wellman's Drug Store
Scotia Towers
Scott Fruit Company
Security Building
Seniors for Seniors
Tony's Shamrock Lunch
Vic Sharpe
Shaver's Furs Ltd.
Simpson Sears/Sears Canada
Shoppers Mall Brandon
Brandon and Distric Shriner's Club
Shur-Gro Farm Services Ltd.
Simplot Canada Ltd.
Koch Fertilizer Canada
Thomas Sinclair
Sixteenth Street Beach
John E. Smith Block
Smith & Burton
Smith Carter Searle Associates
Smith's Lumber Ltd.
Smith's Tobacco Shop
Smitty's Restaurant
Snye Bridge/Snye River
Sokol Hall
Sokol Manor
Somerville & Co.
Soo's Chop Suey House
South End Community Centre
Spin Well Woolen Mills Co. Ltd.
Sportsplex
Harold Spratling

The Spruce Woods Housing Cooperative Ltd.
Stanley Park
West End Park
Stan's IGA/Stan's Fine Foods
Staples Business Depot
O. Stark & Son
Steel Store
Strand Theatre
Strathcona Apartments
Isaiah Strome
Stuarts News & Cigar Store
Lawrence Stuckey
Suburban Restaurant
Sun Cafe
The Sun Printing Company
Superstore
Super Thrifty Drugs
Sykes Slide
Ted Hill's Meat Market
MTS
Texaco-Lone Star Service Station
Allen Theatre
Bijou Theatre
Capital Theatre
Landmark Cinema
Empire Theatre
Green Acres Drive-In Theatre
Lucky Star Drive-In Theatre
Oak Theatre
Orpheum Theatre
Palace Theatre
Princess Theatre
Sherman Theatre
Starland Theatre
Town Cinema
Willis Theatre
The Avenue Groceteria
The Fun Shop
Thomas Mall
Thompson Grocery
Train Drive-In & Dairy Bar
Trans-Canada Highway
Travellers Day Parade
Trotter & Trotter
Tuberculosis Act

United Commercial Travellers of America
UCT
United Grill
United Cafe
United Pacific Company Ltd.
United Services Recreation Centre
Upton Apartments
Valleyview Subdivision
Velvet Dip
Venice House Restaurant
Victoria Curling Club
Victoria Rink
Victory Cafe
The Vogue
Waddell's Children's Store
Wade & Sons Ltd.
Wally Byam Caravan Club International
Watt's Men's Wear
Welder Supplies Ltd.
Wendy's Restaurant
West End Community Centre
Westbran Stadium
Neil Andrews Field
Western cooperative Fertilizers Ltd.
Western Concrete Products Ltd.
Western Grocers Ltd.
Western Manitoba Centennial Auditorium
Western Medical Clinic
Western Motors Ltd.
Westman Communications Group
Westman Media Cooperative
Westman Kiwanis Courts
Westoba Credit Union
Wheat City Arena
Winter Fair Building
Wheat City Business College
Wheat City Curling Club
Wheat City Motors
Whyte's Pantry Grocery
White Rose Service Station
Willingdon Apartments
Willson Stationery Company
Wilton Motors Ltd.
Winnipeg House
F.W. Woolworth Store

Wright & Wightman
Yaeger's Furs
YMCA
YWCA
Zenith Paving Ltd.
Zeller's
Zink's Grocery
First Baptist Church
Bethel Temple
Pentecostal Tabernacle
Bethel Christian Assembly
McDiarmid Drive Alliance Church
Calvary Temple
St. Paul's Presbyterian Church
St. Paul's United Church
Central United Church
First Church of Christ Scientist
Church of the Nazarene
First Christian Reformed Church
First Church United
First Methodist Church
Methodist Church
First Presbyterian Church
Full Gospel Church
Four Square Gospel Church
Grace Lutheran Church
Grace Mennonite Church
Grand Valley Community Church
Jewish Synagogue
Kingdom Hall of Jehovah Witnesses
Knox United Church
Knox Presbyterian Church
First Lutheran Church
Lutheran Redeemer Church
Madison Crescent Baptist Church
Mennonite Mission Church
Mevlana Canadian Heritage Islam Society
Richmond Park Mennonite Brethren Church
Saint Andrews Presbyterian Church
St. Augustine's Church
St. George's Anglican Church
St. Hedwig's Catholic Church
St. Joseph's Polish National Catholic Church
St. Mary's Ukrainian Catholic Church
St. Matthew's Cathedral

The Salvation Army
Brandon Citadel Corps
Eventide Home
Bullock-Booth Home
Dinsdale Personal Care Home
St. Mary's Anglican Church
Southminster Presbyterian Church
Trinity United Church
Ukrainian Orthodox Church of Holy Ghost
Victoria Avenue Methodist Church
Brandon General Hospital
Assiniboine Hospital
Brandon Regional Health Centre
Brandon Regional Health Authority
A4 Military Training Camp
Fort Brandon Barracks
Brandon Mental Health Centre (BMHC)
Child & Adolescent Treatment Centre
Albion Hotel
American House
Arlington Hotel
Barney's Motel
Beaubier House
Beaubier Hotel
Mr. Bee's Inn
Best Western Brandon Inn
Brandon Hotel
Brandon House
Brunswick House
Canad Inns
Canadian Inn
Knights Inn
Casa Blanca Motel
Cecil Hotel
Chalet Inn Motel
Central Hotel
Chester House
City Hotel
Coachman Inn Motel
City Centre Hotel
Colonial Inn
Comfort Inn Motel
Journey's End Motel
Crystal Hotel
Crystal's Grand View Hotel

Days Inn
Douglas House
Empire Hotel
Edie House
Grand Central Hotel
Grand Union Hotel
Harris House
Highland Park Motor Lodge
Hillcrest Motel
Imperial Hotel
Kelly House
King Edward Hotel
Keystone Motor Inn
Lakeview Inn & Suites
Lamp Lighter Motor Lodge
Lambton House
Langham Hotel
Little Chalet Inn Motel
Merchant's Hotel
Midway Motel
Motel Rambler
Motel 6
New Pacific Hotel
Nite Rest Cabins
North Hill Motel
Ottawa Hotel
Ontario House
One & Ten Motel
Pacific Hotel
Palace Hotel
Prince Edward Hotel
Queens Hotel
Ramada Inn
Red Oak Inn
Redwood Inn
Redwood Motor Inn
Redwood Travelodge
Reno Hotel
Rodeway Inn Motel
Roseland Hotel
Royal Arms Hotel
Royal George Hotel
Royal Hotel
Royal Oak Inn
The Scotsman Motel

Shore House
Star & Garter Hotel
Sunset Motel
Starlight Motel
Super 6 Motel
Super 8 Motel
Trails West Motor Inn
Transit House
Travelodge
Twin Pines Motel
Victorial Hotel
Victoria Inn
Western Motel
Wheat City Hotel
Windsor Hotel
G.W. Alexander
E.G. Wiswell
John Richards
Thomas Hudson
John Melhuish
Alexander Mowat
George Bain
Jack Carey
Edward Polnick
Gary Winters
Rick Gregoire
Brent Dane
Archibald McMillan
Peter Duncan
Jack Foster
Watson Boyd
E.G. Berry
Joseph Robert Hardy
Charlie Goucher
Harry Bernard Everett
John Little
Harry Collister
Roger Hines
David McNamee
Ken Elliott
Keith Buizer
Brian Scott
Dick Scott
Richard Bruce
Harley Bryson

Keith Atkinson
Ian Grant
City Hall
Brandon City Council
City of Brandon
Brandon Cemetery
Brandon School Board
Brandon School Division
Alexandra School
Assiniboine Community College
Assiniboine School
Betty Gibson School
Brandon Collegiate Institute (BCI)
Central School
Crocus Plains Regional Secondary School
David Livingstone School
Earl Haig School
Earl Oxford School
East Ward School
Fleming School
George Fitton School
Green Acres School
Harrison High School
Harrison Middle School
Christian Heritage School
Indian Industrial School
Indian Residential School
King George School
Kirkcaldy Heights School
Linden Lanes School
Lions School
McLaren School
Meadows Elementary School
Neelin High School
New Era School
Brandon Normal School
Brandon Agricultural & Homemaking School
Agricultural Extension Centre
North Ward School
Park School
J.R. Reid School
Riverheights School
Riverview Elementary School
Sacred Heart School
St. Augustine's School

St. Joseph's Academy
St. Michael's Convent
St. Michael's Academy
Technical School
Valleyview Centennial School
Subject Access: Vincent Massey High School
Dominion Exhibition Branch (1913)
armories
Waverly School
West Ward School
Bakeries
Brandon College
Bowling alleys
Brandon University
Breweries
Brandon Generating Station
Bricks
Brandon Quota Club
Polish Gymnastic Association Sokol
Bridges
Buildings
bus transportation
Canada's centennial
circuses
creameries
dairies
druggists
drug stores
Grain elevators
fairs
exhibitions
Flour mills
funeral homes
funeral chapels
gasoline
garbage dumps
landfills
recycling
Transportation
houses
ice houses
ice wagons
IGA stores
grocery stores
infantile paralysis
polio
laundries
manufactured gas
street names
natural gas
newspapers
public utilities

Brandon General Strike
hydro
police department
parking
parking meters
population
post offices
prohibition
alcohol regulations
rationing
roller rinks
skate board parks
floods
telephone services
theatres
highways
Housing
waterworks
sewers
weather
snowstorms
churches
hospitals
military hospitals
hotels
fire chiefs
fire department
police chiefs
judicial system
city boundaries
salaries
mayors
city engineers
city managers
Brandon's 75th Anniversary
Brandon's centennial

Storage Location: tokens
2003 accessions
4-2013 with 2013 accessions

Storage Range: 2003 accessions, 2013 accessions; loose photographs from the 8-2008
accession are located in the RG 5 photograph storage drawer.

RG 2 Provincial Exhibition of Manitoba Association fonds



<http://archives.brandonu.ca/en/permalink/descriptions4351>

Part Of: RG 2 Provincial Exhibition of Manitoba Association fonds
Description Level: Fonds
GMD: multiple media
Date Range: 1884-1992
Physical Description: 9.46 m textual records; 1919 photographs & graphics

History /

Biographical:

Brandon, Manitoba was incorporated as a city in 1881. In 1882, led by Charles Whitehead and a small Board of Directors that included J.W. Vantassel, Charles Pilling, George Halse, J.E. Smith, William Johnson, R.T. Evans, and Thomas Lockhart, it was decided to hold an agricultural exhibition. These men were all involved in the farm business in one way or another, and they wanted an opportunity to help residents realize the agricultural potential of the region. In October of that year, the fledgling community held its first agricultural exhibition. The fair was held in downtown Brandon at what was known as "Market Square." Market Square was two acres of land located on Princess Avenue between Eighth and Ninth Streets. Due to poor weather, and the fact that not many people were ready to show animals and grain, there was a relatively small turnout. The following year was much improved. There were 730 entries into the exhibition. By 1884, the Board of Directors of the Brandon Agricultural Society, which was in charge of the exhibition, realized that they were in poor financial shape, to the point of being personally out of pocket. It was realized that October was not the best time for farmers to be leaving their farms to go to an exhibition. In 1888, it was decided to move the exhibition to the summer time, when it was much easier for people to attend.

The first Brandon Summer Fair was held in July 1889, and it was a resounding success. The Board of Directors had added many items of interest to appeal to the entire public, not just agricultural people. In 1892, the Western Agricultural and Arts Association (WAAA) was formally established to take over duties from the Brandon Agricultural Society. However, it was not until 1897 that the WAAA held its first meeting. There is no explanation as to why there is a five year gap between the formation and the first meeting of this organization. 1897 was the turning point of the Brandon Exhibition. The fair was now firmly established in Brandon, and the Board of Directors was instrumental in ensuring that it remained so. This was done by petitioning to both the municipal and provincial governments for grant money. As well, the Board booked midway and grandstand acts that would bring the city dwellers to the agricultural exhibition.

There were also early attempts at holding an agricultural exhibition in the winter. The first such attempt was in 1884. There was also a Spring Stallion show held in 1891. By 1904, however, a petition by J.D. McGregor had gone out to formally establish a winter exhibition. This effort also failed, but by 1906, it was decided by businessmen, politicians, and farm representatives in Brandon, including McGregor, to organize a winter fair. Rather than seeing this new fair as competition, the Board of Directors of the summer fair felt that it would complement their exhibition. The new fair would remain primarily agricultural. The first winter fair was held in 1906. While the two fairs were not amalgamated, they did share the same secretary-manager. The secretary-manager was responsible for the day to day management of the fair, as well as keeping track of meetings and decisions reached by the various fair boards and committees. In 1907, the Brandon Winter Fair and Livestock Association (BWFLA) was formed to act primarily as a land-holding joint stock company. The following year the Provincial Winter Fair and Fat Stock Association (PWFFSA), an entirely separate organization from the BWFLA, was formed to manage the activities of the winter fair. The PWFFSA name was soon changed to the Manitoba Winter Fair and Fat Stock Association (MWFFSA).

By 1906, Brandon could boast two full size exhibitions, one in the summer and one in the late winter, both of which were considered to be premiere events. In 1908, the Brandon summer fair was renamed the Inter-Provincial Exhibition, and in 1912 it held its first Traveller's Day, an

event which would soon become an important addition to the fair and is still in existence today. It is thought that the name "Traveller's Day" came from the fact that it was held on a Saturday, a day when many people could travel to Brandon for the exhibition.

In 1913, Brandon was bestowed with the honour of hosting the Dominion Exhibition. This was a national exhibition sponsored by the federal government. It was held in a different city every year. There were several cities vying for the 1913 Dominion Exhibition, but it was Brandon that impressed the sponsors the most. With the government funds received for this honour, the Board of Directors supervised the building of a new grandstand, display buildings, and racetrack, as well as the general expansion and improvements to the fairgrounds.

In the spring of 1912, it was decided by the Board of Directors of the winter fair that the facilities they were currently housed in were inadequate for their needs. The mayor and city clerk of Brandon went to the provincial legislature in order to request that there be an amendment added to the Brandon city charter. This amendment would allow the city to guarantee bonds issued by the winter fair board to help pay for the construction of a new facility. This request was granted, and a \$70 000 addition was built next to the original winter fair building. The new building was opened in 1913.

Throughout the First World War, both the winter fair and Provincial Exhibition buildings were used for the war effort. There was one distinct difference however. The summer fair Board was able to negotiate a deal with the army that enabled it to reclaim the fair buildings during fair week. The winter fair, however, had to give up the idea of holding fairs in 1915 and 1916. It was not until 1917, that the winter fair was able to resume.

During this time, due to the financial problems that had beset the winter fair, the two exhibitions considered amalgamation. The Board of Directors of the winter fair felt that because they were the smaller of the two fairs, their interests would be swallowed up by the summer fair. The winter fair withdrew from the negotiations to amalgamate. With this rather sudden turn of events, the Board of Directors of the summer fair petitioned the government to be allowed to incorporate. This was granted, and in 1920, the WAAA was incorporated as the Provincial Exhibition of Manitoba. From 1920, the summer fair was officially known as the Provincial Exhibition of Manitoba. This was the first time that the summer fair was incorporated, and received the "status and financial assistance" that came with incorporation.

More problems beset the winter fair in the 1920s. In 1920, a fire burned down the winter fair pavilion, located at the south end of the winter fair buildings, and caused the Board to cancel the 1921 winter fair. It was not until 1922, that a new building was completed. By 1929, both fairs were well regarded throughout Canada. In 1929, a decade long Depression hit the west. While many fairs closed during this time, Brandon struggled to keep its open. The Directors of both fairs felt that the agricultural shows "encouraged excellence at a time when faith and enthusiasm were at a low ebb." The summer fair proved to be quite successful during the Depression, likely as a result of the few moments one was able to forget one's troubles while there. The winter fair was not quite as successful, although both fairs received government grants and work relief projects. There was little new entertainment in these exhibitions.

There were changes about to manifest themselves at the summer fair, however. While the winter fair had representatives from various associations on its Board of Directors, the summer fair Board of Directors was a small close-knit group of men. Citizens saw entry into this elite group as elusive and difficult. To ward off the possibility of the Board becoming a "self-sustaining clique," that only chose Directors from within, it was decided by several citizens to try and elect some new blood into the fair Board. In 1933, there was a general election for the Board. Instead of the usual men shuffling positions, there were forty-four nominations for the twenty positions. When the voting was all over, seven new men sat on the Board. Despite some inner rumblings, especially on the summer fair Board over the next few years, both exhibitions survived the Depression.

During the Second World War the fairs once again were forced to operate under adversity. Once again, the buildings were requisitioned for the army, although they were released during fair week. The summer fair was forced to make several concessions, and the winter fair was relocated to the summer fair grounds for the duration.

The winter fair did not survive the Second World War intact. Due to financial reasons, in December of 1945, the Board of Directors turned the winter fair buildings over to the City of Brandon. By 1946, the BWFLA, which was the joint-stock land holding company, had ceased operations because the city now controlled the winter fair land and buildings.

The next fifteen years would be a time of rebuilding for both of Brandon's exhibitions. Children especially were more active participants in the agricultural exhibitions. The summer fair continued to diversify and look for new ways of entertaining the public at large. The winter fair remained primarily agricultural. By the end of the 1950s the winter fair, which was used to struggling, was now both successful and stable; and the summer fair, a perennial success, was starting to fade.

By 1969, both the winter and summer fair Boards had realized that amalgamation was the best possible decision, both practically and financially, for the future of the two fairs. On 29 October, 1969, the two exhibitions amalgamated to become the Manitoba Exhibition Association. The reconstituted Provincial Exhibition of Manitoba was now responsible for both the winter and summer fairs. A new building was erected on the summer fair grounds to house both of the exhibitions. On 2 April 1973, the Keystone Centre was officially opened at the winter fair, although it had been in use since October of the preceding year.

In 1970, Manitoba's Centennial, it was decided that an organization in Manitoba would receive the title of "Royal," as a way to celebrate the centennial. Although many organizations applied for the honour, it was the Brandon winter fair that received the accolades. The winter fair was bestowed with the title "Royal", and became known as the Royal Manitoba Winter Fair.

In 1975, a third exhibition was added, this time a purely agricultural fall show known as the Agricultural Exhibition, or AgEx. This fair was partly organized on behalf of the cattle growers, who found that the summer and winter fairs did not give them adequate time and space to properly show their cattle. The return to a fall show, which had not existed since 1888, would be the return to a purely agricultural exhibition. This show was to be primarily a show and sale event. On 3 November 1975, the first AgEx was opened to resounding success.

The Provincial Exhibition of Manitoba, the Royal Manitoba Winter Fair and AgEx are all still in existence in Brandon. They are regarded as three of the most important events to take place annually in the city.

Custodial History:

These files were housed with the Manitoba Exhibition Association until c1986 when they were transferred to the S.J. McKee Archives at Brandon University.

Scope and Content:

The fonds consists of textual records and photographs comprised of the records from the three annual exhibitions that are held in Brandon, Manitoba: the Provincial Exhibition of Manitoba, the Royal Manitoba Winter Fair, and the Agricultural Exhibition (Ag-Ex). The textual records include prize lists, programs, minutes, financial, administrative files, original results, scrapbooks, tickets, news releases, contracts, by laws, documents as well as a miscellaneous section. There are approximately 1846 photographs that include scenes from these three exhibitions. These records provide a unique perspective on the development of agriculture and rural life in southwestern Manitoba. Fairs such as these have been and remain prime media of farm improvement, technological and scientific advancement in rural Canada, and the promoters of country living. These fairs also reflected the long tradition inherited from Britain and Europe of country fairs as centers of entertainment, social interchange and diversion. These records are a principal source of information about the most broadly based vocational, entertainment and social events held on an annual basis in southwestern Manitoba over the last century. The records are vital to academic research on agriculture or fairs, individual biography, or community history.

Notes: The RG 2 Provincial Exhibition of Manitoba Association finding aid was created by Karyn (Riedel) Taylor with the exception of Series 9 and the accompanying database, which were created by Donica Belisle. This finding aid was created in August 1999.

Name Access: Charles Whitehead
J.W. Vantassel
Charles Pilling
George Halse

Subject Access: Brandon Agricultural Society
Provincial Exhibition of Manitoba
Royal Manitoba Winter Fair
Agricultural Exhibition
Brandon Manitoba
AgEx

Repro Restriction: Researchers are responsible for observing Canadian copyright restrictions.

Finding Aid: Available

Storage Location: RG 2 Provincial Exhibition of Manitoba Association fonds

Storage Range: RG 2 Provincial Exhibition of Manitoba Association fonds

Related Material: Additional records regarding the Provincial Exhibition of Manitoba, the Royal Manitoba Winter Fair, and AgEx are housed at the Provincial Exhibition of Manitoba Association offices. To gain access to these records, it is necessary to contact the general manager of the Provincial Exhibition of Manitoba Association.

Arrangement:

The fonds is divided into sous-fonds by exhibition. There is a Provincial Exhibition sous-fonds, a Royal Manitoba Winter Fair sous-fonds, an Ag-Ex sous-fonds, and a Miscellaneous sous-fonds that holds information that could not be easily broken down into one exhibition. The arrangement is as follows:

RG 2 Provincial Exhibition Association of Manitoba fonds

RG2SF1 Provincial Exhibition of Manitoba

- 1.1 Documents
- 1.2 Minutes
- 1.3 Financial Records
- 1.4 Administrative Files
- 1.5 Prize Lists and Programs
- 1.6 News Releases
- 1.7 Original Results
- 1.8 Tickets
- 1.9 Photographs
- 1.10 Scrapbooks
- 1.11 Miscellaneous

RG2SF2 Royal Manitoba Winter Fair

- 2.1 Documents
- 2.2 Minutes
- 2.3 Financial Records
- 2.4 Administrative Files
- 2.5 Prize Lists and Programs
- 2.6 News Releases
- 2.7 Original Results
- 2.8 Tickets
- 2.9 Photographs
- 2.10 Scrapbooks
- 2.11 Miscellaneous

RG2SF3 AgEx

- 3.4 Administrative Files
- 3.5 Prize Lists and Programs
- 3.6 News Releases
- 3.7 Original Results
- 3.9 Photographs

RG2SF4 Miscellaneous

- 4.1 Documents
- 4.2 Minutes
- 4.3 Financial Records
- 4.4 Administrative Files
- 4.9 Photographs
- 4.10 Scrapbooks
- 4.11 Miscellaneous