

S. J. McKee Archives



Baldur, Manitoba

<http://archives.brandonu.ca/en/permalink/descriptions14394>

Part Of: James Wall collection

Description Level: Item

Series Number: Box 1

Item Number: 12-2004.1

Accession Number: 12-2004

GMD: graphic

Date Range: [1903]

Physical Description: 8" x 6" (b/w)

Material Details: On matting (12" x 10")

Physical Condition: good

Custodial History:

See collection level description for the James Douglas Wall collection.

Scope and Content:

Image shows a view of Baldur, MB with a body of water and train tracks in the foreground.

Notes: 12-2004.15 indicates the water was caused by spring flooding.

Subject Access: rural images

Location Copy: Same as 12-2004.15

Storage Location: 2004 accessions

Images





Manitoba threshers

<http://archives.brandonu.ca/en/permalink/descriptions14397>

Part Of: James Wall collection
Description Level: Item
Series Number: Box 2
Item Number: 12-2004.4
Accession Number: 12-2004
GMD: graphic
Date Range: [1900-1904]
Physical Description: 6.75" x 4.75" (b/w)
Material Details: On matting (9.75" x 7.75")
Physical Condition: good

Custodial History:

See collection level description for the James Douglas Wall collection.

Scope and Content:

Image of men in a field, likely a threshing crew, with work horses and farm machinery.

Subject Access: rural images

Storage Location: 2004 accessions

Images





Baldur, Manitoba - snow on the ground

<http://archives.brandonu.ca/en/permalink/descriptions14406>

Part Of: James Wall collection

Description Level: Item

Series Number: Box 1

Item Number: 12-2004.13

Accession Number: 12-2004

GMD: graphic

Date Range: September 13, 1903

Physical Description: 6.6" x 4.75" (b/w)

Material Details: On matting (9" x 7")

Custodial History:

See collection level description for the James Douglas Wall collection.

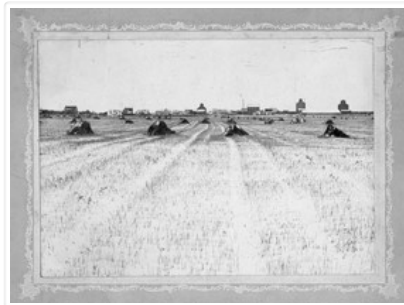
Scope and Content:

Image of Baldur, MB with a field in the foreground. The field has a light snow covering and stacks of hay. Baldur is in the background.

Subject Access: rural images

Storage Location: 2004 accessions

Images





Baldur, Manitoba from southwest

<http://archives.brandonu.ca/en/permalink/descriptions14407>

Part Of: James Wall collection

Description Level: Item

Series Number: Box 1

Item Number: 12-2004.14

Accession Number: 12-2004

GMD: graphic

Date Range: 1903

Physical Description: 6.6" x 4.75" (b/w)

Material Details: On matting (8.75" x 7")

Physical Condition: good

Custodial History:

See collection level description for the James Douglas Wall collection.

Scope and Content:

Image of Baldur, MB, including grain elevators.

Subject Access: rural images

Storage Location: 2004 accessions

Images





Baldur, Manitoba spring flood

<http://archives.brandonu.ca/en/permalink/descriptions14408>

Part Of: James Wall collection

Description Level: Item

Series Number: Box 1

Item Number: 12-2004.15

Accession Number: 12-2004

GMD: graphic

Date Range: 1903

Physical Description: 8" x 6" (b/w)

Material Details: On matting (12" x 10")

Physical Condition: good

Custodial History:

See collection level description for the James Douglas Wall collection.

Scope and Content:

Image of Baldur, MB, with a body of water, possibly from spring flooding, in the foreground.

Subject Access: rural images

Location Copy: Same as 12-2004.1

Storage Location: 2004 accessions

Images

