

S. J. McKee Archives



Lovstrom survey 1985 - artifact survey catalogue

<http://archives.brandonu.ca/en/permalink/descriptions12428>

Part Of: RG 7 Beverley Nicholson fonds

Description Level: sub sub sub series

Series Number: 3.1.1.4

File Number: 1

Accession Number: 1-2010

GMD: textual records

Date Range: 1985

Physical Description: 74 pages

Material Details: PDF

History /

Biographical:

Artifact catalogue containing records from the Lovstrom survey 1985.

Scope and Content:

Spreadsheet containing information about the artifacts recovered, including: unit, level, artifact number, catalogue number, depth, co-ordinates, entry date, date recovered, count, weight, UTM co-ordinates, notes (excavators initials and comments) and artifact identification.

Name Access: Lovstrom survey 1985 - artifact survey catalogue

Subject Access: Archaeology
Lovstrom locale
Lovstrom survey 1985

Documents



3.1.1.4.1_LovCatSur_8
5.pdf



Download Document



Casselman survey

<http://archives.brandonu.ca/en/permalink/descriptions11706>

Part Of: RG 7 Beverley Nicholson fonds

Description Level: Sub-series

Series Number: 1.1

Accession Number: 1-2010

GMD: multiple media

Date Range: 2003-2008

History /

Biographical:

The high biodiversity and evidence of pre-European contact prompted the decision to test the Crepeelee locale. The survey was named in recognition of the Casselman family, the original landowners.

Archaeological testing began in the Crepeelee locale in May 2003 on property now owned by the Crepeelee family. The locale covers over 6 sections or approximately 3,800 acres of land in an area of stabilized sand dunes and wetlands covered with mixed forest and prairie grass. Given the terrain, the size of the crew and time constraints, an area of approximately 60 acres was chosen for the survey. The survey used the established archaeological methodology of walking the selected area and using a shovel test surveyed grid. The use of GIS technology to locate the exact test spot and record the information into a GIS database was a significant advance and was one of the advantages of the integration of multi-disciplinary techniques encouraged by the SCAPE project. Over one half of the test pits resulted in the recovery of cultural materials. The results of the Casselman survey indicated several areas for further examination including areas that became the Crepeelee, Sarah and Graham sites.

Scope and Content:

Sub sub series has been divided into five sub sub sub series including: (1) Summary information; (2) Field journals; (3) Site records; (4) Artifact catalogues; and (5) Photographs.

Name Access: Casselman survey

Subject Access: Archaeology
Crepeelee locale
Casselman survey



Lovstrom survey

<http://archives.brandonu.ca/en/permalink/descriptions12407>

Part Of: RG 7 Beverley Nicholson fonds

Description Level: Sub-series

Series Number: 3.1

Accession Number: 1-2010

GMD: multiple media

Date Range: 1985-1986

History /

Biographical:

The Lovstrom surface collection came from small fields cleared within, and adjacent to, the major portions of the site which were excavated. The Lovstroms initial collection has since been added to by field personnel from Brandon University. The initial collections consisted of lithics and ceramics. A collection of faunal remains from the cultivated area was made by a Brandon University zooarchaeology class in 1986 which yielded specimens of elk, canid, mussels, and sucker, in addition to an expected abundance of bison. Since these materials were in a surface context, it may be that some of the faunal remains were historic.

The high biodiversity and evidence of pre-European contact prompted the decision to test the Lovstrom locale. Nine 1m² units were excavated in 1985 and, in 1986, an additional 15 1m² units were excavated for a total of 24 test units. This testing indicated the presence of a large precontact locale with lithics, woodland ceramics and large amounts of reasonably well-preserved faunal materials.

The lithics indicated a late Prehistoric occupation (Nicholson 1986:35). However, the ceramics were more useful in that they identified the presence of Late Woodland cultures (Blackduck and Duckbay) and a single Middle Missouri vessel. It is believed that the Middle Missouri vessel was imported since the paste and construction/decorative technology differ distinctively from that of all other vessels recovered from the site. It was on the basis of an examination of these surface finds that the decision to test the Lovstrom site was made. These test excavations were conducted during the summers of 1985 and 1986.

Field investigations through shovel tests, excavation units, and examination of rodent mounds, indicated that the cultural deposits at the Lovstrom locale extend approximately 500m north from the edge of the Souris channel and eastward for over two hundred meters from the escarpment along Jock's Creek. The presence of dense forest vegetation covering much of the locale, and the subsurface nature of the archaeological deposits obscured surface indications.

Radiocarbon dates: Test Unit 4: 1215/320 BP and Test Unit 8 1280/190 BP

Scope and Content:

Sub-series has been divided into sub sub series including: Lovstrom survey 1985 and Lovstrom survey 1986

Name Access: Lovstrom survey

Subject Access: Archaeology
Lovstrom locale
Lovstrom survey



Lovstrom survey 1985

<http://archives.brandonu.ca/en/permalink/descriptions12408>

Part Of: RG 7 Beverley Nicholson fonds

Description Level: Sub sub series

Series Number: 3.1.1

Accession Number: 1-2010

GMD: multiple media

Date Range: 1985

Material Details: Field journals have been scanned in multi-page PDF files. Artifact catalogues are PDF files in spreadsheet format. Photographs are in jpeg format.

History /

Biographical:

Directed by Dr. Nicholson, a crew of five students from Brandon University under the supervision of Dr. Scott Hamilton excavated a total of 9 units in 1985. This testing indicated the presence of artifacts manufactured by Blackduck and Duckbay peoples from the boreal forest and northern parkland areas. Other ceramics diagnostic of groups from the Saskatchewan Basin and the Middle Missouri area were also recovered in surface collection from the cultivated area of the locale.

Scope and Content:

Sub-sub-sub series contains: Summary information of field methodology, number and co-ordinates of excavations, personnel and their staff position; Field journals are daily records of recoveries, features and activities at the site; Site records include excavation level and unit summaries, feature sheets, profiles; sample records and maps; Artifact catalogues are lists and identifications of all artifacts recovered; Photographs are of excavation units, features, the landscape and personnel.

Name Access: Lovstrom survey 1985

Subject Access: Archaeology
Lovstrom locale
Lovstrom survey
Lovstrom survey 1985



Lovstrom survey 1986

<http://archives.brandonu.ca/en/permalink/descriptions12409>

Part Of: RG 7 Beverley Nicholson fonds
Description Level: Sub sub series
Series Number: 3.1.2
Accession Number: 1-2010
GMD: multiple media
Date Range: 1986
Material Details: Field journals have been scanned in multi-page PDF files. Artifact catalogues are PDF files in spreadsheet format. Photographs are in jpeg format.

History /

Biographical:

Directed by Dr. Nicholson with Brenda Kramarchuck as crew chief, two students from Brandon University were hired to excavate an additional sample of 15 1m² units in 1986. This work confirmed the results of the first season, and resulted in an increased sample of faunal material, lithics, ceramics, and in the identification of distinctive ceramic clusters from different locations within the locale. These two seasons of testing satisfactorily demonstrated the presence of a large Prehistoric locale containing the remains of Late Woodland occupation which included lithics, ceramics and reasonably well preserved faunal remains.

Scope and Content:

Sub-sub-sub series contains: Summary information of field methodology, number and co-ordinates of excavations, personnel and their staff position; Field journals are daily records of recoveries, features and activities at the site; Site records include excavation level and unit summaries, feature sheets, profiles; sample records and maps; Artifact catalogues are lists and identifications of all artifacts recovered; Photographs are of excavation units, features, the landscape and personnel.

Name Access: Lovstrom survey 1986
Subject Access: Archaeology
Lovstrom locale
Lovstrom survey
Lovstrom survey 1986



Casselman survey - photographs

<http://archives.brandonu.ca/en/permalink/descriptions10734>

Part Of: RG 7 Beverley Nicholson fonds

Description Level: Sub sub series

Series Number: 1.1.5

Accession Number: 1-2010

GMD: graphic

Date Range: 2003

Physical Description: 11 photographs

Material Details: JPEGs

Scope and Content:

Sub sub series consists of photographs taken during the Casselman survey.

Name Access: Casselman survey - photographs

Subject Access: Crepeele locale
Casselman survey



C.A.U.B.O. fees survey

<http://archives.brandonu.ca/en/permalink/descriptions3862>

Part Of: RG 6 Brandon University fonds

Description Level: File

Series Number: 4.2

File Number: 277

GMD: textual records

Date Range: 1971

Physical Description: 1 file

Scope and Content:

File consists of correspondence and completed surveys (with statistical data).

Storage Location: RG 6 Brandon University fonds
Series 4: Office of the Vice-President
4.2 Office of the Vice-President (Administration & Finance)
Box 7



Casselman survey - artifact catalogue

<http://archives.brandonu.ca/en/permalink/descriptions11722>

Part Of: RG 7 Beverley Nicholson fonds

Description Level: Sub sub series

Series Number: 1.1.4

Accession Number: 1-2010

GMD: textual records

Date Range: 2003

Physical Description: 264 pages

Material Details: PDF

History /

Biographical:

Artifact catalogue containing 597 records from the Casselman survey 2003.

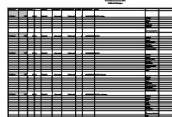
Scope and Content:

Spreadsheet containing information about the artifacts recovered, including: unit, level, artifact number, catalogue number, depth, co-ordinates, entry date, date recovered, count, weight, UTM co-ordinates, notes (excavators initials and comments) and artifact identification.

Name Access: Casselman survey - artifact catalogue

Subject Access: Archaeology
Crepeele locale
Casselman survey

Documents



1.1.4_Ca03_artcat.pdf

 Read PDF

 Download PDF



Casselman survey - summary information

<http://archives.brandonu.ca/en/permalink/descriptions11724>

Part Of: RG 7 Beverley Nicholson fonds
Description Level: Sub sub series
Series Number: 1.1.1
GMD: multiple media
Date Range: 2003
Material Details: Field journals have been scanned in multi-page PDF files. Artifact catalogues are PDF files in spreadsheet format. Photographs are in jpeg format.

History /

Biographical:

Archaeological testing began in the Crepeelee locale in May 2003 with a field crew of four members. James Graham supervised the crew and was assisted by Sarah Graham, Jollana Bishop, and Lisa Sonnenburg. Later additions to the testing team were Todd Kristensen, Michael Evans, and Emily Ansell.

The methodology for this survey used an arbitrary datum and a transit to establish a grid of 30 m intervals and a shovel test every 20 m. Materials were removed and screened to a minimum depth of 50 cm below surface. All recovered materials were bagged and removed to the lab for further analysis. All information including: test pit grid co-ordinates; UTM co-ordinates for each test pit; artifact presence; excavator; vegetation; aspect; paleosol; paleosol depth; and notes, were entered into a GIS database.

Approximately 600 shovel test pits were excavated and recorded in this fashion. Of the 600 shovel test pits, over 300 contained cultural materials. Based on the results of the Casselman survey several areas were designed for further testing and excavation. Crepeelee West and Crepeelee East were renamed the Sarah site DiMe-28) and Crepeelee 3 which became the Crepeelee site DiMe- 29.

Scope and Content:

Sub-sub-sub series contains: Summary information of field methodology, number and co-ordinates of excavations, personnel and their staff position; Field journals are daily records of recoveries, features and activities at the site; Site records include excavation level and unit summaries, feature sheets, profiles; sample records and maps; Artifact catalogues are lists and identifications of all artifacts recovered; Photographs are of excavation units, features, the landscape and personnel.

Name Access: Casselman survey - summary information
Subject Access: Archaeology
Crepeelee locale
Casselman survey
Casselman survey - summary information



Casselman survey - field journals

<http://archives.brandonu.ca/en/permalink/descriptions10218>

Part Of: RG 7 Beverley Nicholson fonds

Description Level: Sub sub series

Series Number: 1.1.2

Accession Number: 1-2010

GMD: textual records

Date Range: 2003

History /

Biographical:

Archaeological testing began in the Crepeelee locale in May 2003. The Casselman survey in the Crepeelee locale was directed by Bev Nicholson and James Graham supervised the crew. Crew members were Sarah Graham, Jollana Bishop, Lisa Sonnenburg, Todd Kristensen, Michael Evans, and Emily Ansell.

Scope and Content:

The director, field supervisor and some field crew kept daily journals of activities during the survey including: excavation methods, items recovered, features, local environment and weather are noted.

Name Access: Casselman survey

Subject Access: Archaeology field journals

Archaeology

Crepeelee locale

Casselman survey

Arrangement:

Field journals were scanned in their entirety as one multi-page PDF. However, each journal may contain information that relates to multiple sites or individuals. The entire PDF journal is linked to each file level description with the relevant page numbers indicated in the Scope and Content note.



Casselman survey - lithic bifaces

<http://archives.brandonu.ca/en/permalink/descriptions10973>

Part Of: RG 7 Beverley Nicholson fonds

Description Level: Item

Series Number: 1.1.5

Item Number: 1.1.5.10

Accession Number: 1-2010

GMD: graphic

Date Range: 2003

Physical Description: 2000 x 1333 (525KB)

Material Details: JPEG

Scope and Content:

Lithic bifaces (stone tools) from Casselman survey

Name Access: Casselman survey - photographs

Subject Access: Archaeology
Crepeele locale
Casselman survey

Images





Survey regarding parking fees

<http://archives.brandonu.ca/en/permalink/descriptions4443>

Part Of: RG 6 Brandon University fonds

Description Level: File

Series Number: 15

File Number: 44

GMD: textual records

Date Range: [n.d.]

Physical Description: 1 file

Scope and Content:

File consists of completed survey forms.

Storage Location: RG 6 Brandon University fonds

Series XV: BUFA

Box 5



Soil Conservation

<http://archives.brandonu.ca/en/permalink/descriptions5176>

Part Of: RG 6 Brandon University fonds

Description Level: File

Series Number: MG 3 1.14.1

File Number: 237

GMD: textual records

Date Range: June 1990

Physical Description: 1 file

Scope and Content:

File consists of correspondence

Storage Location: RG 6 Brandon University fonds

MG 3 Brandon University Teaching and Administration

1.14.1 W. Leland Clark - political career

Box 10



Lovstrom survey 1986 - artifact catalogue

<http://archives.brandonu.ca/en/permalink/descriptions12429>

Part Of: RG 7 Beverley Nicholson fonds

Description Level: sub sub sub series

Series Number: 3.1.2.4

Accession Number: 1-2010

GMD: textual records

Date Range: 1986

Physical Description: 140 pages

Material Details: PDF

History /

Biographical:

Artifact catalogue containing records from the test excavations during the Lovstrom survey 1986.

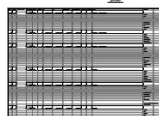
Scope and Content:

Spreadsheet containing information about the artifacts recovered, including: unit, level, artifact number, catalogue number, depth, co-ordinates, entry date, date recovered, count, weight, UTM co-ordinates, notes(excavators initials and comments) and artifact identification.

Name Access: Lovstrom survey 1986 - artifact catalogue

Subject Access: Archaeology
Lovstrom locale
Lovstrom survey 1986

Documents



3.1.2.4_LovCatTU_10_
24.pdf

 Read PDF

 Download PDF



Lovstrom survey 1985 - Souris valley

<http://archives.brandonu.ca/en/permalink/descriptions12449>

Part Of: RG 7 Beverley Nicholson fonds

Description Level: Item

Series Number: 3.1.1.5

Item Number: 3.1.1.5.1

Accession Number: 1-2010

GMD: graphic

Date Range: 1985

Physical Description: 1200 x 803 (394KB)

Material Details: JPEG

Scope and Content:

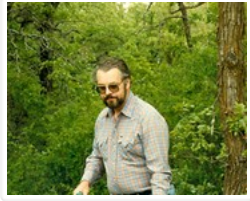
View of the Souris valley from the Lovstrom locale.

Name Access: Lovstrom survey 1985 - Souris valley

Subject Access: Archaeology
Lovstrom locale
Lovstrom survey 1985

Images





Lovstrom survey 1986 - Bev Nicholson

<http://archives.brandonu.ca/en/permalink/descriptions12450>

Part Of: RG 7 Beverley Nicholson fonds

Description Level: Item

Series Number: 3.1.2.5

Item Number: 3.1.2.5.1

Accession Number: 1-2010

GMD: graphic

Date Range: 1986

Physical Description: 1200 x 960 (857KB)

Material Details: JPEG

Scope and Content:

Bev Nicholson at the Lovstrom locale.

Name Access: Lovstrom survey 1986 - Bev Nicholson

Subject Access: Archaeology

Lovstrom locale

Lovstrom survey 1986

Images





Casselman survey - group on sand dune

<http://archives.brandonu.ca/en/permalink/descriptions10737>

Part Of:	RG 7 Beverley Nicholson fonds
Description Level:	Item
Series Number:	1.1.5
Item Number:	1.1.5.2
Accession Number:	1-2010
GMD:	graphic
Date Range:	2003
Physical Description:	2000 x 1500 (1752 KB)
Material Details:	JPEG
Name Access:	Casselman survey - photographs
Subject Access:	Archaeology Crepeele locale Casselman survey

Images





Casselman survey - ceramic rim sherd

<http://archives.brandonu.ca/en/permalink/descriptions10972>

Part Of: RG 7 Beverley Nicholson fonds

Description Level: Item

Series Number: 1.1.5

Item Number: 1.1.5.9

Accession Number: 1-2010

GMD: graphic

Date Range: 2003

Physical Description: 1200 x 900 (363KB)

Material Details: JPEG

Scope and Content:

Cord-wrapped stick impressions on ceramic rim sherd.

Name Access: Casselman survey - ceramic rim sherd

Subject Access: Crepeele locale
Casselman survey
Casselman survey - photograph

Images





Lovstrom survey 1985 - site co-ordinates

<http://archives.brandonu.ca/en/permalink/descriptions12410>

Part Of: RG 7 Beverley Nicholson fonds

Description Level: sub sub sub series

Series Number: 3.1.1.1

Accession Number: 1-2010

GMD: multiple media

Date Range: 1985

Material Details: Field journals have been scanned in multi-page PDF files. Artifact catalogues are PDF files in spreadsheet format. Photographs are in jpeg format.

History /

Biographical:

In 1985 the Lovstrom locale was tested by Drs. Nicholson and Hamilton with 5 students. An extensive survey and nine excavations units were opened. This testing indicated the presence of artifacts manufactured by Blackduck and Duckbay peoples from the boreal forest and northern parkland areas. Other ceramics diagnostic of groups from the Saskatchewan Basin and the Middle Missouri area were also recovered in surface collection from the cultivated area of the locale.

Scope and Content:

Sub-sub-sub series contains: Summary information of field methodology, number and co-ordinates of excavations, personnel and their staff position.

Name Access: Lovstrom survey 1985 - site co-ordinates

Subject Access: Archaeology
Lovstrom locale
Lovstrom survey 1985

Documents

ARCH 3.1 Lovstrom Locale 1985-1

3.1.1.1 Lovstrom survey and testing 1985

3.1.1.1.1 Summary Information

In 1985 Drs. Nicholson and Scott Hamilton with a small crew of students set up survey lines within the locale. Surface finds were designated as catalogue numbers 1 and surface 2 with consecutive surface numbers. Five test units were excavated in the stratified zone of the locale.

Excavation units were: Brenda Lonsdale, Alan Fries, Alan Fries, and Alan, Fries and Brenda Lonsdale.

The initial data was established as PDF with the base of 200 000 and 200 000. A subsequent data with the co-ordinates of 1000 000 was used to facilitate computer cataloging.

Excavation Unit	Original Name	Catalogue Name	Area
NU 1	2000000	2000000	Alan Fries
NU 2	2000001	2000001	Alan Fries
NU 3	2000002	2000002	Brenda Lonsdale
NU 4	2000003	2000003	Alan Fries
NU 5	2000004	2000004	Alan Fries
NU 6	2000005	2000005	Alan Fries
NU 7	2000006	2000006	Alan Fries
NU 8	2000007	2000007	Alan Fries
NU 9	2000008	2000008	Alan Fries
NU 10	2000009	2000009	Alan Fries

NU 1-9: Alan Fries, Scott Hamilton

3.1.1.1_Summary.pdf

Read PDF

Download PDF



Lovstrom survey 1986 - site co-ordinates

<http://archives.brandonu.ca/en/permalink/descriptions12411>

Part Of:	RG 7 Beverley Nicholson fonds
Description Level:	sub sub sub series
Series Number:	3.1.2.1
Accession Number:	1-2010
GMD:	multiple media
Date Range:	1986
Material Details:	Field journals have been scanned in multi-page PDF files. Artifact catalogues are PDF files in spreadsheet format. Photographs are in jpeg format.

History /

Biographical:

Under Dr. Nicholson's direction and crew chief Brenda Kramarchuk with crew of Kate Peach and Blaine Frenette an additional sample of 15 units were excavated in 1986. This work confirmed the results of the first season, and resulted in an increased sample of faunal material, lithics, ceramics, and in the identification of distinctive ceramic clusters from different locations within the locale. These two seasons of testing satisfactorily demonstrated the presence of a large Prehistoric locale that warranted further exploration.

Scope and Content:

Sub-sub-sub series contains: Summary information of field methodology, number and co-ordinates of excavations, personnel and their staff position.

Name Access:	Lovstrom survey 1986 - site co-ordinates
Subject Access:	Archaeology Lovstrom locale Lovstrom survey 1986

Documents

