

# S. J. McKee Archives

---



## New Pool at #1 and #10

<http://archives.brandonu.ca/en/permalink/descriptions14615>

Part Of: John Everitt collection

Description Level: Item

Item Number: JCE-0005

GMD: graphic

Date Range: November 1983

Material Details: Kodachrome slide

History /

Biographical:

Operated as Pool A, this wooden grain elevator was built by Manitoba Pool Elevators between 1983 and 1984. It was closed by 2007 and demolished by 2008.

Custodial History:

Slide was in the possession of John Everitt before its donation to the SJ McKee Archives in 2007.

Scope and Content:

Item is an image of the new Manitoba Pool Elevator at Brandon, MB, under construction. The elevator was located at highways #1 and #10.

Notes: History/bio information:  
<http://www.mhs.mb.ca/docs/sites/brandonelevator2.shtml>

Repro Restriction: The SJ McKee Archives is the copyright holder for the John Everitt collection and as such is providing access to the John Everitt slide collection for educational and research purposes only. To publish, copy or otherwise use these images, written permission must be obtained from the SJ McKee Archives. Any issues arising from the use of an item is the responsibility of the persons desiring to use the item, as is the securing of any necessary permissions for use.

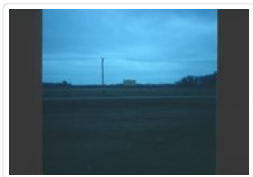
Arrangement:

Original order. Box 1 - Section Man Pool 1

## Images

---





## New Pool from #1

<http://archives.brandonu.ca/en/permalink/descriptions14617>

Part Of: John Everitt collection

Description Level: Item

Item Number: JCE-0011

GMD: graphic

Date Range: April 1984

Material Details: Kodachrome slide

History /

Biographical:

Operated as Pool A, this wooden grain elevator was built by Manitoba Pool Elevators between 1983 and 1984. It was closed by 2007 and demolished by 2008.

Custodial History:

Slide was in the possession of John Everitt before its donation to the SJ McKee Archives in 2007.

Scope and Content:

Item is an image of the new Manitoba Pool Elevator at Brandon, MB as seen from #1 highway.

Notes: History/bio

information:<http://www.mhs.mb.ca/docs/sites/brandonelevator2.shtml>

Repro Restriction:

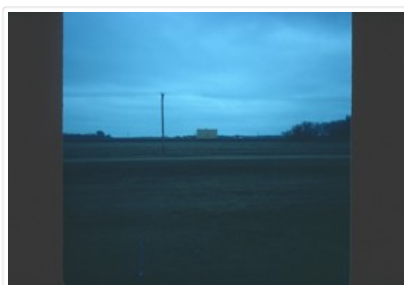
The SJ McKee Archives is the copyright holder for the John Everitt collection and as such is providing access to the John Everitt slide collection for educational and research purposes only. To publish, copy or otherwise use these images, written permission must be obtained from the SJ McKee Archives. Any issues arising from the use of an item is the responsibility of the persons desiring to use the item, as is the securing of any necessary permissions for use.

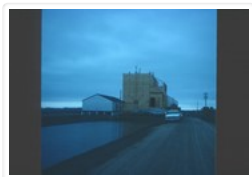
Arrangement:

Original order. Box 1 - Section Man Pool 1

## Images

---





## New Pool Elevator near Portage la Prairie

<http://archives.brandonu.ca/en/permalink/descriptions14616>

Part Of: John Everitt collection

Description Level: Item

Item Number: JCE-0004

GMD: graphic

Date Range: April 1984

Material Details: Kodachrome slide

History /

Biographical:

Constructed by Manitoba Pool Elevators between 1983 and 1984, the Burnside Siding Elevator was closed and demolished in 2008.

Custodial History:

Slide was in the possession of John Everitt before its donation to the SJ McKee Archives in 2007.

Scope and Content:

Item is an image of the new Manitoba Pool Elevator at Burnside Siding in the RM of Portage la Prairie under construction.

Notes: History/bio

information:<http://www.mhs.mb.ca/docs/sites/burnsideelevator.shtml>

Repro Restriction:

The SJ McKee Archives is the copyright holder for the John Everitt collection and as such is providing access to the John Everitt slide collection for educational and research purposes only. To publish, copy or otherwise use these images, written permission must be obtained from the SJ McKee Archives. Any issues arising from the use of an item is the responsibility of the persons desiring to use the item, as is the securing of any necessary permissions for use.

Arrangement:

Original order. Box 1 - Section Man Pool 1

### Images

---

