

S. J. McKee Archives



Construction of Great Northern (BS&HB) Railway Bridge at Bunclody - Grade

<http://archives.brandonu.ca/en/permalink/descriptions9977>

Part Of: RG 11 Lawrence Stuckey fonds

Description Level: Item

Series Number: 3.1

Item Number: 1-2002.3.1PE1

Accession Number: 1-2002

GMD: graphic

Date Range: [1905 or 1906]

Physical Description: 3 1/2" x 5"

Material Details: Negative

History /

Biographical:

According to Stuckey and Bain (1996), "The Brandon, Saskatchewan & Hudson's Bay Railway was built and operated as a totally owned subsidiary of the Great Northern Railway. Construction commenced in late 1905 and by the end of 1905, less than a mile of track had been laid north of the boundary at St. John. In 1906, the remaining 68.6 miles to Brandon were laid and service commenced that year. During the Depression of the 1930s, traffic declined significantly and the entire branch was abandoned in 1936. Over much of the branch's length, the ties and rails were laid on the prairie without ballast and today little remains of the line apart from traces where there were cuts and bridges." (p. 18)

Stuckey, L. A., & Bain, D. M. (1996). The Great Northern and Northern Pacific railways in Canada. Calgary, Alberta: British Railway Modellers of North America.

Custodial History:

For custodial history see the collection level description of the Lawrence Stuckey collection.

Scope and Content:

View of the Great Northern (BS&HB) Railway building a grade [to their bridge] at Bunclody, Manitoba.

Notes: [This railway bridge crossed the Souris River. P.E.]

From the collection of Gilford Copeland of Bunclody, Manitoba

Copy negative LAS.

Name Access: Construction of Great Northern (BS&HB) Railway
Brandon, Saskatchewan & Hudson's Bay Railway
Great Northern Railway

Subject Access: railroads
 railways
 manmade geographic features
 construction
 construction of bridges
 bridges
 Great Northern Railway from Church's Ferry ND to Brandon MB

Repro Restriction: The McKee Archives is the copyright holder for the Stuckey materials.

Storage Location: Lawrence Stuckey collection

Images



Great Northern (BS&HB) Railway overpass east of Bunclody station

<http://archives.brandonu.ca/en/permalink/descriptions9985>

Part Of: RG 11 Lawrence Stuckey fonds

Creator: Copy negative LAS

Description Level: Item

Series Number: 3.1

Item Number: 1-2002.3.1PE9(1)

Accession Number: 1-2002

GMD: graphic

Date Range: [193-?]

Physical Description: 3 1/2" x 5"

Material Details: Negative

History /

Biographical:

According to Stuckey and Bain (1996), "The Brandon, Saskatchewan & Hudson's Bay Railway was built and operated as a totally owned subsidiary of the Great Northern Railway. Construction commenced in late 1905 and by the end of 1905, less than a mile of track had been laid north of the boundary at St. John. In 1906, the remaining 68.6 miles to Brandon were laid and service commenced that year. During the Depression of the 1930s, traffic declined significantly and the entire branch was abandoned in 1936. Over much of the branch's length, the ties and rails were laid on the prairie without ballast and today little remains of the line apart from traces where there were cuts and bridges." (p. 18)

Stuckey, L. A., & Bain, D. M. (1996). The Great Northern and Northern Pacific railways in Canada. Calgary, Alberta: British Railway Modellers of North America.

Custodial History:

For custodial history see the collection level description of the Lawrence Stuckey collection.

Scope and Content:

Great Northern (BS&HB) Railway overpass east of station, Bunclody, Manitoba.

Notes: From the collection of Gilford Copeland of Bunclody, Manitoba.

Name Access: Brandon, Saskatchewan & Hudson's Bay Railway

Great Northern Railway

Subject Access: railroads

railways

manmade geographic features

bridges

Great Northern Railway from Church's Ferry ND to Brandon MB

Repro Restriction: The McKee Archives is the copyright holder for the Stuckey materials.

Storage Location: Lawrence Stuckey collection

Arrangement:

[Mr. Stuckey taped a print to this envelope. We have separated them, numbering the negative PE9(1) and the print PE9(2).]

Images



Great Northern (BS&HB) Railway overpass east of Bunclody station

<http://archives.brandonu.ca/en/permalink/descriptions9986>

Part Of: RG 11 Lawrence Stuckey fonds

Creator: Copy negative LAS
Description Level: Item
Series Number: 3.1
Item Number: 1-2002.3.1PE9(2)
Accession Number: 1-2002
GMD: graphic
Date Range: [193-?]
Physical Description: 2" x 4"
Material Details: Photograph

History /

Biographical:

According to Stuckey and Bain (1996), "The Brandon, Saskatchewan & Hudson's Bay Railway was built and operated as a totally owned subsidiary of the Great Northern Railway. Construction commenced in late 1905 and by the end of 1905, less than a mile of track had been laid north of the boundary at St. John. In 1906, the remaining 68.6 miles to Brandon were laid and service commenced that year. During the Depression of the 1930s, traffic declined significantly and the entire branch was abandoned in 1936. Over much of the branch's length, the ties and rails were laid on the prairie without ballast and today little remains of the line apart from traces where there were cuts and bridges." (p. 18)

Stuckey, L. A., & Bain, D. M. (1996). The Great Northern and Northern Pacific railways in Canada. Calgary, Alberta: British Railway Modellers of North America.

Custodial History:

For custodial history see the collection level description of the Lawrence Stuckey collection.

Scope and Content:

Great Northern (BS&HB) Railway overpass east of station, Bunclody, Manitoba.

Notes: From the collection of Gilford Copeland of Bunclody, Manitoba.

Name Access: Brandon, Saskatchewan & Hudson's Bay Railway
Great Northern Railway

Subject Access: railroads
railways
manmade geographic features
bridges

Great Northern Railway from Church's Ferry ND to Brandon MB

Repro Restriction: The McKee Archives is the copyright holder for the Stuckey materials.

Storage Location: Lawrence Stuckey collection

Arrangement:

[Mr. Stuckey taped a print to this envelope. We have separated them, numbering the negative PE9(1) and the print PE9(2).]

Images





Construction of Great Northern (BS&HB) Railway Bridge at Buncloody - Grading Station

<http://archives.brandonu.ca/en/permalink/descriptions9978>

Part Of: RG 11 Lawrence Stuckey fonds

Description Level: Item

Series Number: 3.1

Item Number: 1-2002.3.1PE2

Accession Number: 1-2002

GMD: graphic

Date Range: [1905 or 1906]

Physical Description: 3 1/2" x 5"

Material Details: Negative

History /

Biographical:

According to Stuckey and Bain (1996), "The Brandon, Saskatchewan & Hudson's Bay Railway was built and operated as a totally owned subsidiary of the Great Northern Railway. Construction commenced in late 1905 and by the end of 1905, less than a mile of track had been laid north of the boundary at St. John. In 1906, the remaining 68.6 miles to Brandon were laid and service commenced that year. During the Depression of the 1930s, traffic declined significantly and the entire branch was abandoned in 1936. Over much of the branch's length, the ties and rails were laid on the prairie without ballast and today little remains of the line apart from traces where there were cuts and bridges." (p. 18)

Stuckey, L. A., & Bain, D. M. (1996). The Great Northern and Northern Pacific railways in Canada. Calgary, Alberta: British Railway Modellers of North America.

Custodial History:

For custodial history see the collection level description of the Lawrence Stuckey collection.

Scope and Content:

View of the Great Northern (BS&HB) Railway building a grade [to their bridge] at Buncloody, Manitoba.

Notes: Grading station site

From the collection of Gilford Copeland of Buncloody, Manitoba

Copy negative LAS.

Name Access: Construction of Great Northern (BS&HB) Railway
Brandon, Saskatchewan & Hudson's Bay Railway
Great Northern Railway

Subject Access: railroads
railways
manmade geographic features
construction
construction of bridges
bridges

Great Northern Railway from Church's Ferry ND to Brandon MB

Repro Restriction: The McKee Archives is the copyright holder for the Stuckey materials.

Storage Location: Lawrence Stuckey collection

Images



Great Northern (BS&HB) Railway Construction Camp near Bunclody

<http://archives.brandonu.ca/en/permalink/descriptions9982>

Part Of: RG 11 Lawrence Stuckey fonds

Description Level: Item

Series Number: 3.1

Item Number: 1-2002.3.1PE6

Accession Number: 1-2002

GMD: graphic

Date Range: [1905 or 1906]

Physical Description: 3 1/2" x 5"

Material Details: Negative

History /

Biographical:

According to Stuckey and Bain (1996), "The Brandon, Saskatchewan & Hudson's Bay Railway was built and operated as a totally owned subsidiary of the Great Northern Railway. Construction commenced in late 1905 and by the end of 1905, less than a mile of track had been laid north of the boundary at St. John. In 1906, the remaining 68.6 miles to Brandon were laid and service commenced that year. During the Depression of the 1930s, traffic declined significantly and the entire branch was abandoned in 1936. Over much of the branch's length, the ties and rails were laid on the prairie without ballast and today little remains of the line apart from traces where there were cuts and bridges." (p. 18)

Stuckey, L. A., & Bain, D. M. (1996). The Great Northern and Northern Pacific railways in Canada. Calgary, Alberta: British Railway Modellers of North America.

Custodial History:

For custodial history see the collection level description of the Lawrence Stuckey collection.

Scope and Content:

Great Northern (Brandon, Saskatchewan and Hudson's Bay) Railway construction camp near Bunclody, Manitoba.

Notes: From the collection of Gilford Copeland of Bunclody, Manitoba
[Combined] copy negative LAS.

Name Access: Construction of Great Northern (BS&HB) Railway
Brandon, Saskatchewan & Hudson's Bay Railway
Great Northern Railway

Subject Access: railroads
railways
manmade geographic features
construction of bridges
Great Northern Railway from Church's Ferry ND to Brandon MB

Repro Restriction: The McKee Archives is the copyright holder for the Stuckey materials.

Storage Location: Lawrence Stuckey collection

Images



Great Northern (BS&HB) Railway Bridge at Bunclody

<http://archives.brandonu.ca/en/permalink/descriptions9987>

Part Of: RG 11 Lawrence Stuckey fonds

Description Level: Item

Series Number: 3.1

Item Number: 1-2002.3.1PE10

Accession Number: 1-2002

GMD: graphic

Date Range: 1930

Physical Description: 3 1/2" x 5"

Material Details: Negative

History /

Biographical:

According to Stuckey and Bain (1996), "The Brandon, Saskatchewan & Hudson's Bay Railway was built and operated as a totally owned subsidiary of the Great Northern Railway. Construction commenced in late 1905 and by the end of 1905, less than a mile of track had been laid north of the boundary at St. John. In 1906, the remaining 68.6 miles to Brandon were laid and service commenced that year. During the Depression of the 1930s, traffic declined significantly and the entire branch was abandoned in 1936. Over much of the branch's length, the ties and rails were laid on the prairie without ballast and today little remains of the line apart from traces where there were cuts and bridges." (p. 18)

Stuckey, L. A., & Bain, D. M. (1996). The Great Northern and Northern Pacific railways in Canada. Calgary, Alberta: British Railway Modellers of North America.

Custodial History:

For custodial history see the collection level description of the Lawrence Stuckey collection.

Scope and Content:

Great Northern (BS&HB) Railway bridge crossing the Souris River at Bunclody, Manitoba.

Notes: [This copy negative was produced using a previously published image.
P.E. 29/07/09]

Name Access: Brandon, Saskatchewan & Hudson's Bay Railway
Great Northern Railway

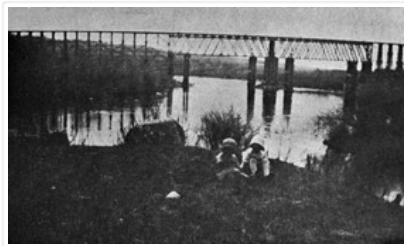
Subject Access: railroads
railways
manmade geographic features
bridges

Great Northern Railway from Church's Ferry ND to Brandon MB

Repro Restriction: The McKee Archives is the copyright holder for the Stuckey materials.

Storage Location: Lawrence Stuckey collection

Images



Great Northern (BS&HB) Railway Bridge at Bunclody

<http://archives.brandonu.ca/en/permalink/descriptions9989>

Part Of: RG 11 Lawrence Stuckey fonds

Description Level: Item

Series Number: 3.1

Item Number: 1-2002.3.1PE12

Accession Number: 1-2002

GMD: graphic

Date Range: 1930

Physical Description: 3 1/2" x 5"

Material Details: Negative

History /

Biographical:

According to Stuckey and Bain (1996), "The Brandon, Saskatchewan & Hudson's Bay Railway was built and operated as a totally owned subsidiary of the Great Northern Railway. Construction commenced in late 1905 and by the end of 1905, less than a mile of track had been laid north of the boundary at St. John. In 1906, the remaining 68.6 miles to Brandon were laid and service commenced that year. During the Depression of the 1930s, traffic declined significantly and the entire branch was abandoned in 1936. Over much of the branch's length, the ties and rails were laid on the prairie without ballast and today little remains of the line apart from traces where there were cuts and bridges." (p. 18)

Stuckey, L. A., & Bain, D. M. (1996). The Great Northern and Northern Pacific railways in Canada. Calgary, Alberta: British Railway Modellers of North America.

Custodial History:

For custodial history see the collection level description of the Lawrence Stuckey collection.

Scope and Content:

Great Northern (BS&HB) Railway bridge crossing the Souris River at Bunclody, Manitoba.

Notes:	[Combined] copy negative From water level.
Name Access:	Brandon, Saskatchewan & Hudson's Bay Railway Great Northern Railway
Subject Access:	railroads railways manmade geographic features bridges Great Northern Railway from Church's Ferry ND to Brandon MB
Repro Restriction:	The McKee Archives is the copyright holder for the Stuckey materials.
Storage Location:	Lawrence Stuckey collection

Images



Great Northern (BS&HB) Railway Bridge at Bunclody

<http://archives.brandonu.ca/en/permalink/descriptions9990>

Part Of:	RG 11 Lawrence Stuckey fonds
Description Level:	Item
Series Number:	3.1
Item Number:	1-2002.3.1PE13

Accession Number: 1-2002
GMD: graphic
Date Range: 1930
Physical Description: 3 1/2" x 5"
Material Details: Negative

History /

Biographical:

According to Stuckey and Bain (1996), "The Brandon, Saskatchewan & Hudson's Bay Railway was built and operated as a totally owned subsidiary of the Great Northern Railway.

Construction commenced in late 1905 and by the end of 1905, less than a mile of track had been laid north of the boundary at St. John. In 1906, the remaining 68.6 miles to Brandon were laid and service commenced that year. During the Depression of the 1930s, traffic declined significantly and the entire branch was abandoned in 1936. Over much of the branch's length, the ties and rails were laid on the prairie without ballast and today little remains of the line apart from traces where there were cuts and bridges." (p. 18)

Stuckey, L. A., & Bain, D. M. (1996). The Great Northern and Northern Pacific railways in Canada. Calgary, Alberta: British Railway Modellers of North America.

Custodial History:

For custodial history see the collection level description of the Lawrence Stuckey collection.

Scope and Content:

Great Northern (BS&HB) Railway bridge crossing the Souris River at Bunclody, Manitoba.

Notes: [Combined] copy negative
overview from hillside
Includes road bridge.

Name Access: Brandon, Saskatchewan & Hudson's Bay Railway
Great Northern Railway

Subject Access: railroads
railways
manmade geographic features
bridges
Great Northern Railway from Church's Ferry ND to Brandon MB

Repro Restriction: The McKee Archives is the copyright holder for the Stuckey materials.

Storage Location: Lawrence Stuckey collection

Images



Farm Wagons at Great Northern (BS&HB) Station in Bunclody



<http://archives.brandonu.ca/en/permalink/descriptions9992>

Part Of: RG 11 Lawrence Stuckey fonds

Description Level: Item

Series Number: 3.1

Item Number: 1-2002.3.1PE15

Accession Number: 1-2002

GMD: graphic

Date Range: [between 1906 and 1936]

Physical Description: 3 1/2" x 5"

Material Details: Negative

History /

Biographical:

According to Stuckey and Bain (1996), "The Brandon, Saskatchewan & Hudson's Bay Railway was built and operated as a totally owned subsidiary of the Great Northern Railway. Construction commenced in late 1905 and by the end of 1905, less than a mile of track had been laid north of the boundary at St. John. In 1906, the remaining 68.6 miles to Brandon were laid and service commenced that year. During the Depression of the 1930s, traffic declined significantly and the entire branch was abandoned in 1936. Over much of the branch's length, the ties and rails were laid on the prairie without ballast and today little remains of the line apart from traces where there were cuts and bridges." (p. 18)

Stuckey, L. A., & Bain, D. M. (1996). The Great Northern and Northern Pacific railways in Canada. Calgary, Alberta: British Railway Modellers of North America.

Custodial History:

For custodial history see the collection level description of the Lawrence Stuckey collection.

Scope and Content:

Farm wagons at Great Northern (BS&HB) station in Bunclody, Manitoba.

Notes: From the collection of Gilford Copeland of Bunclody, Manitoba
[Combined] copy negative LAS.

Name Access: Brandon, Saskatchewan & Hudson's Bay Railway
Great Northern Railway
Great Northern Railway stations

Subject Access: railroads
railways
railway stations
Great Northern Railway from Church's Ferry ND to Brandon MB

Repro Restriction: The McKee Archives is the copyright holder for the Stuckey materials.

Storage Location: Lawrence Stuckey collection

Images





Great Northern Railway crane on Souris River bridge

<http://archives.brandonu.ca/en/permalink/descriptions9980>

Part Of: RG 11 Lawrence Stuckey fonds

Creator: Great Northern Railway

Description Level: Item

Series Number: 3.1

Item Number: 1-2002.3.1PE4

Accession Number: 1-2002

GMD: graphic

Date Range: [between 1905 and 1936]

Physical Description: 3 1/2" x 5"

Material Details: Negative

History /

Biographical:

According to Stuckey and Bain (1996), "The Brandon, Saskatchewan & Hudson's Bay Railway was built and operated as a totally owned subsidiary of the Great Northern Railway.

Construction commenced in late 1905 and by the end of 1905, less than a mile of track had been laid north of the boundary at St. John. In 1906, the remaining 68.6 miles to Brandon were laid and service commenced that year. During the Depression of the 1930s, traffic declined significantly and the entire branch was abandoned in 1936. Over much of the branch's length, the ties and rails were laid on the prairie without ballast and today little remains of the line apart from traces where there were cuts and bridges." (p. 18)

Stuckey, L. A., & Bain, D. M. (1996). The Great Northern and Northern Pacific railways in Canada. Calgary, Alberta: British Railway Modellers of North America.

Custodial History:

For custodial history see the collection level description of the Lawrence Stuckey collection.

Scope and Content:

Great Northern Railway crane on Souris River bridge, Bunclody, Manitoba.

Notes: [Mr. Stuckey is unsure if this photo was taken during construction of the bridge, or whether it may have been taken during its dismantling when the railway line closed. P.E.]

From the collection of Gilford Copeland of Bunclody, Manitoba

Copy negative LAS.

Name Access: Construction of Great Northern (BS&HB) Railway
Brandon, Saskatchewan & Hudson's Bay Railway
Great Northern Railway

Subject Access: cranes
railroads
railways
manmade geographic features
construction of bridges
bridges
Great Northern Railway from Church's Ferry ND to Brandon MB

Repro Restriction: The McKee Archives is the copyright holder for the Stuckey materials.
Storage Location: Lawrence Stuckey collection

Images



Great Northern Railway Steam Shovel & Cars

<http://archives.brandonu.ca/en/permalink/descriptions9979>

Part Of: RG 11 Lawrence Stuckey fonds
Description Level: Item
Series Number: 3.1
Item Number: 1-2002.3.1PE3
Accession Number: 1-2002
GMD: graphic
Date Range: [1905 or 1906]
Physical Description: 3 1/2" x 5"
Material Details: Negative

History /

Biographical:

According to Stuckey and Bain (1996), "The Brandon, Saskatchewan & Hudson's Bay Railway was built and operated as a totally owned subsidiary of the Great Northern Railway. Construction commenced in late 1905 and by the end of 1905, less than a mile of track had been laid north of the boundary at St. John. In 1906, the remaining 68.6 miles to Brandon were laid and service commenced that year. During the Depression of the 1930s, traffic declined significantly and the entire branch was abandoned in 1936. Over much of the branch's length, the ties and rails were laid on the prairie without ballast and today little remains of the line apart from traces where there were cuts and bridges." (p. 18)

Stuckey, L. A., & Bain, D. M. (1996). The Great Northern and Northern Pacific railways in Canada. Calgary, Alberta: British Railway Modellers of North America.

Custodial History:

For custodial history see the collection level description of the Lawrence Stuckey collection.

Scope and Content:

Great Northern Railway steam shovel & earth cars.

Notes:	Used in the construction of the Brandon, Saskatchewan and Hudson's Bay Railway at Bunclody, Manitoba Great Northern Railway photo From the collection of Gilford Copeland of Bunclody, Manitoba Copy negative LAS.
Name Access:	Construction of Great Northern (BS&HB) Railway Brandon, Saskatchewan & Hudson's Bay Railway Great Northern Railway
Subject Access:	steam shovels railroads railways manmade geographic features construction of bridges bridges Great Northern Railway from Church's Ferry ND to Brandon MB
Repro Restriction:	The McKee Archives is the copyright holder for the Stuckey materials.
Storage Location:	Lawrence Stuckey collection

Images



Great Northern Railway Steam Shovel

<http://archives.brandonu.ca/en/permalink/descriptions9983>

Part Of:	RG 11 Lawrence Stuckey fonds
Description Level:	Item
Series Number:	3.1
Item Number:	1-2002.3.1PE7
Accession Number:	1-2002
GMD:	graphic
Date Range:	[1905 or 1906]
Physical Description:	3 1/2" x 5"
Material Details:	Negative

History /

Biographical:

According to Stuckey and Bain (1996), "The Brandon, Saskatchewan & Hudson's Bay Railway was built and operated as a totally owned subsidiary of the Great Northern Railway. Construction commenced in late 1905 and by the end of 1905, less than a mile of track had been laid north of the boundary at St. John. In 1906, the remaining 68.6 miles to Brandon were laid and service commenced that year. During the Depression of the 1930s, traffic declined significantly and the entire branch was abandoned in 1936. Over much of the branch's length, the ties and rails were laid on the prairie without ballast and today little remains of the line apart from traces where there were cuts and bridges." (p. 18)

Stuckey, L. A., & Bain, D. M. (1996). The Great Northern and Northern Pacific railways in Canada. Calgary, Alberta: British Railway Modellers of North America.

Custodial History:

For custodial history see the collection level description of the Lawrence Stuckey collection.

Scope and Content:

Great Northern Railway steam shovel.

Notes:	Used in the construction of the Brandon, Saskatchewan and Hudson's Bay Railway at Bunclody, Manitoba Great Northern Railway photo From the collection of Gilford Copeland of Bunclody, Manitoba Copy negative LAS.
Name Access:	Construction of Great Northern (BS&HB) Railway Brandon, Saskatchewan & Hudson's Bay Railway Great Northern Railway
Subject Access:	steam shovels railroads railways manmade geographic features construction of bridges Great Northern Railway from Church's Ferry ND to Brandon MB
Repro Restriction:	The McKee Archives is the copyright holder for the Stuckey materials.
Storage Location:	Lawrence Stuckey collection

Images



Great Northern (BS&HB) Train in Deep Snow



<http://archives.brandonu.ca/en/permalink/descriptions9991>

Part Of: RG 11 Lawrence Stuckey fonds

Description Level: Item

Series Number: 3.1

Item Number: 1-2002.3.1PE14

Accession Number: 1-2002

GMD: graphic

Date Range: [between 1906 and 1936]

Physical Description: 3 1/2" x 5"

Material Details: Negative

History /

Biographical:

According to Stuckey and Bain (1996), "The Brandon, Saskatchewan & Hudson's Bay Railway was built and operated as a totally owned subsidiary of the Great Northern Railway. Construction commenced in late 1905 and by the end of 1905, less than a mile of track had been laid north of the boundary at St. John. In 1906, the remaining 68.6 miles to Brandon were laid and service commenced that year. During the Depression of the 1930s, traffic declined significantly and the entire branch was abandoned in 1936. Over much of the branch's length, the ties and rails were laid on the prairie without ballast and today little remains of the line apart from traces where there were cuts and bridges." (p. 18)

Stuckey, L. A., & Bain, D. M. (1996). The Great Northern and Northern Pacific railways in Canada. Calgary, Alberta: British Railway Modellers of North America.

Custodial History:

For custodial history see the collection level description of the Lawrence Stuckey collection.

Scope and Content:

Great Northern (BS&HB) Railway train in deep snow.

Notes: From the collection of Gilford Copeland of Bunclody, Manitoba
[Combined] copy negative LAS.

Name Access: Brandon, Saskatchewan & Hudson's Bay Railway
Great Northern Railway

Subject Access: railroads
railways
locomotives
Great Northern Railway from Church's Ferry ND to Brandon MB

Repro Restriction: The McKee Archives is the copyright holder for the Stuckey materials.

Storage Location: Lawrence Stuckey collection

Images





Great Northern Railway Steam Shovel Loading Cars

<http://archives.brandonu.ca/en/permalink/descriptions9981>

Part Of: RG 11 Lawrence Stuckey fonds

Description Level: Item

Series Number: 3.1

Item Number: 1-2002.3.1PE5

Accession Number: 1-2002

GMD: graphic

Date Range: [1905 or 1906]

Physical Description: 3 1/2" x 5"

Material Details: Negative

History /

Biographical:

According to Stuckey and Bain (1996), "The Brandon, Saskatchewan & Hudson's Bay Railway was built and operated as a totally owned subsidiary of the Great Northern Railway. Construction commenced in late 1905 and by the end of 1905, less than a mile of track had been laid north of the boundary at St. John. In 1906, the remaining 68.6 miles to Brandon were laid and service commenced that year. During the Depression of the 1930s, traffic declined significantly and the entire branch was abandoned in 1936. Over much of the branch's length, the ties and rails were laid on the prairie without ballast and today little remains of the line apart from traces where there were cuts and bridges." (p. 18)

Stuckey, L. A., & Bain, D. M. (1996). The Great Northern and Northern Pacific railways in Canada. Calgary, Alberta: British Railway Modellers of North America.

Custodial History:

For custodial history see the collection level description of the Lawrence Stuckey collection.

Scope and Content:

Great Northern Railway steam shovel loading cars near Bunclody, Manitoba.

Notes: Used in the construction of the Brandon, Saskatchewan and Hudson's Bay Railway at Bunclody, Manitoba

From the collection of Gilford Copeland of Bunclody, Manitoba

[Combined] copy negative LAS.

Name Access: Construction of Great Northern (BS&HB) Railway
Brandon, Saskatchewan & Hudson's Bay Railway
Great Northern Railway

Subject Access: steam shovels
railroads
railways
manmade geographic features
construction of bridges
bridges

Great Northern Railway from Church's Ferry ND to Brandon MB

Repro Restriction: The McKee Archives is the copyright holder for the Stuckey materials.

Storage Location: Lawrence Stuckey collection



Remnants of Great Northern Railway, Hebron, Manitoba

<http://archives.brandonu.ca/en/permalink/descriptions10005>

Part Of: RG 11 Lawrence Stuckey fonds

Creator: L.A. Stuckey

Description Level: Item

Series Number: 3.1

Item Number: 1-2002.3.1PE28(1)

Accession Number: 1-2002

GMD: graphic

Date Range: [1971?]

Physical Description: 2 1/2" x 2 1/2"

Material Details: Negative

History /

Biographical:

According to Stuckey and Bain (1996), "The Brandon, Saskatchewan & Hudson's Bay Railway was built and operated as a totally owned subsidiary of the Great Northern Railway. Construction commenced in late 1905 and by the end of 1905, less than a mile of track had been laid north of the boundary at St. John. In 1906, the remaining 68.6 miles to Brandon were laid and service commenced that year. During the Depression of the 1930s, traffic declined significantly and the entire branch was abandoned in 1936. Over much of the branch's length, the ties and rails were laid on the prairie without ballast and today little remains of the line apart from traces where there were cuts and bridges." (p. 18)

Stuckey, L. A., & Bain, D. M. (1996). The Great Northern and Northern Pacific railways in Canada. Calgary, Alberta: British Railway Modellers of North America.

Custodial History:

For custodial history see the collection level description of the Lawrence Stuckey collection.

Scope and Content:

Remnants of Great Northern Railway, Hebron, Manitoba. Visible features include the former Great Northern (BS&HB) Railway grade with tie indents, as well as concrete foundation blocks that may have been used for a coal dock.

Name Access: Remnants of Great Northern Railway, Hebron, Manitoba
Brandon, Saskatchewan & Hudson's Bay Railway
Great Northern Railway

Subject Access: railroads
 railways
 Great Northern Railway from Church's Ferry ND to Brandon MB
Repro Restriction: The McKee Archives is the copyright holder for the Stuckey materials.
Storage Location: Lawrence Stuckey collection

Arrangement:

[Mr. Stuckey put two negatives and two prints in the same envelope. We have separated them, numbering the negatives PE28(1) and PE28(2), and the respective prints PE28(1a) and PE28(2a).]

Images



Remnants of Great Northern Railway, Hebron, Manitoba

<http://archives.brandonu.ca/en/permalink/descriptions10006>

Part Of: RG 11 Lawrence Stuckey fonds
Creator: L.A. Stuckey
Description Level: Item
Series Number: 3.1
Item Number: 1-2002.3.1PE28(2)
Accession Number: 1-2002
GMD: graphic
Date Range: [1971?]
Physical Description: 2 1/2" x 2 1/2"
Material Details: Negative

History /

Biographical:

According to Stuckey and Bain (1996), "The Brandon, Saskatchewan & Hudson's Bay Railway was built and operated as a totally owned subsidiary of the Great Northern Railway. Construction commenced in late 1905 and by the end of 1905, less than a mile of track had been laid north of the boundary at St. John. In 1906, the remaining 68.6 miles to Brandon were laid and service commenced that year. During the Depression of the 1930s, traffic declined significantly and the entire branch was abandoned in 1936. Over much of the branch's length, the ties and rails were laid on the prairie without ballast and today little remains of the line apart from traces where there were cuts and bridges." (p. 18)

Stuckey, L. A., & Bain, D. M. (1996). The Great Northern and Northern Pacific railways in Canada. Calgary, Alberta: British Railway Modellers of North America.

Custodial History:

For custodial history see the collection level description of the Lawrence Stuckey collection.

Scope and Content:

Remnants of Great Northern Railway, Hebron, Manitoba. Visible features include the former Great Northern (BS&HB) Railway grade with tie indents, as well as concrete foundation blocks that may have been used for a coal dock.

Name Access:	Remnants of Great Northern Railway, Hebron, Manitoba Brandon, Saskatchewan & Hudson's Bay Railway Great Northern Railway
Subject Access:	railroads railways Great Northern Railway from Church's Ferry ND to Brandon MB
Repro Restriction:	The McKee Archives is the copyright holder for the Stuckey materials.
Storage Location:	Lawrence Stuckey collection

Arrangement:

[Mr. Stuckey put two negatives and two prints in the same envelope. We have separated them, numbering the negatives PE28(1) and PE28(2), and the respective prints PE28(1a) and PE28(2a).

Images



Remnants of Great Northern Railway, Hebron, Manitoba

<http://archives.brandonu.ca/en/permalink/descriptions10007>

Part Of: RG 11 Lawrence Stuckey fonds



Creator: L.A. Stuckey
Description Level: Item
Series Number: 3.1
Item Number: 1-2002.3.1PE28(2a)
Accession Number: 1-2002
GMD: graphic
Date Range: [1971?]
Physical Description: 2 1/2" x 2 1/2"
Material Details: Photograph

History /

Biographical:

According to Stuckey and Bain (1996), "The Brandon, Saskatchewan & Hudson's Bay Railway was built and operated as a totally owned subsidiary of the Great Northern Railway. Construction commenced in late 1905 and by the end of 1905, less than a mile of track had been laid north of the boundary at St. John. In 1906, the remaining 68.6 miles to Brandon were laid and service commenced that year. During the Depression of the 1930s, traffic declined significantly and the entire branch was abandoned in 1936. Over much of the branch's length, the ties and rails were laid on the prairie without ballast and today little remains of the line apart from traces where there were cuts and bridges." (p. 18)

Stuckey, L. A., & Bain, D. M. (1996). The Great Northern and Northern Pacific railways in Canada. Calgary, Alberta: British Railway Modellers of North America.

Custodial History:

For custodial history see the collection level description of the Lawrence Stuckey collection.

Scope and Content:

Remnants of Great Northern Railway, Hebron, Manitoba. Visible features include the former Great Northern (BS&HB) Railway grade with tie indents, as well as concrete foundation blocks that may have been used for a coal dock.

Name Access: Remnants of Great Northern Railway, Hebron, Manitoba
Brandon, Saskatchewan & Hudson's Bay Railway
Great Northern Railway
Subject Access: railroads
railways
Great Northern Railway from Church's Ferry ND to Brandon MB
Repro Restriction: The McKee Archives is the copyright holder for the Stuckey materials.
Storage Location: Lawrence Stuckey collection

Arrangement:

[Mr. Stuckey put two negatives and two prints in the same envelope. We have separated them, numbering the negatives PE28(1) and PE28(2), and the respective prints PE28(1a) and PE28(2a).

Images



Remnants of Great Northern Railway, Hebron, Manitoba

<http://archives.brandonu.ca/en/permalink/descriptions10008>

Part Of: RG 11 Lawrence Stuckey fonds

Creator: L.A. Stuckey

Description Level: Item

Series Number: 3.1

Item Number: 1-2002.3.1PE28(1a)

Accession Number: 1-2002

GMD: graphic

Date Range: [1971?]

Physical Description: 2 1/2" x 2 1/2" (b/w)

Material Details: Photograph

History /

Biographical:

According to Stuckey and Bain (1996), "The Brandon, Saskatchewan & Hudson's Bay Railway was built and operated as a totally owned subsidiary of the Great Northern Railway.

Construction commenced in late 1905 and by the end of 1905, less than a mile of track had been laid north of the boundary at St. John. In 1906, the remaining 68.6 miles to Brandon were laid and service commenced that year. During the Depression of the 1930s, traffic declined significantly and the entire branch was abandoned in 1936. Over much of the branch's length, the ties and rails were laid on the prairie without ballast and today little remains of the line apart from traces where there were cuts and bridges." (p. 18)

Stuckey, L. A., & Bain, D. M. (1996). The Great Northern and Northern Pacific railways in Canada. Calgary, Alberta: British Railway Modellers of North America.

Custodial History:

For custodial history see the collection level description of the Lawrence Stuckey collection.

Scope and Content:

Remnants of Great Northern Railway, Hebron, Manitoba. Visible features include the former Great Northern (BS&HB) Railway grade with tie indents, as well as concrete foundation blocks that may have been used for a coal dock.

Name Access: Remnants of Great Northern Railway, Hebron, Manitoba
Brandon, Saskatchewan & Hudson's Bay Railway
Great Northern Railway

Subject Access: railroads
 railways
 Great Northern Railway from Church's Ferry ND to Brandon MB

Repro Restriction: The McKee Archives is the copyright holder for the Stuckey materials.

Storage Location: Lawrence Stuckey collection

Arrangement:

[Mr. Stuckey put two negatives and two prints in the same envelope. We have separated them, numbering the negatives PE28(1) and PE28(2), and the respective prints PE28(1a) and PE28(2a).

Images



Great Northern Railway Crane on Souris River Bridge

<http://archives.brandonu.ca/en/permalink/descriptions9988>

Part Of: RG 11 Lawrence Stuckey fonds

Description Level: Item

Series Number: 3.1

Item Number: 1-2002.3.1PE11

Accession Number: 1-2002

GMD: graphic

Date Range: 1930

Physical Description: 3 1/2" x 5"

Material Details: Negative

History /

Biographical:

According to Stuckey and Bain (1996), "The Brandon, Saskatchewan & Hudson's Bay Railway was built and operated as a totally owned subsidiary of the Great Northern Railway. Construction commenced in late 1905 and by the end of 1905, less than a mile of track had been laid north of the boundary at St. John. In 1906, the remaining 68.6 miles to Brandon were laid and service commenced that year. During the Depression of the 1930s, traffic declined significantly and the entire branch was abandoned in 1936. Over much of the branch's length, the ties and rails were laid on the prairie without ballast and today little remains of the line apart from traces where there were cuts and bridges." (p. 18)

Stuckey, L. A., & Bain, D. M. (1996). The Great Northern and Northern Pacific railways in Canada. Calgary, Alberta: British Railway Modellers of North America.

Custodial History:

For custodial history see the collection level description of the Lawrence Stuckey collection.

Scope and Content:

Great Northern Railway crane on Souris River bridge, Bunclody, Manitoba.

Notes: [Combined] copy negative.

Name Access: Brandon, Saskatchewan & Hudson's Bay Railway
Great Northern Railway

Subject Access: cranes
railroads
railways
manmade geographic features
bridges
Great Northern Railway from Church's Ferry ND to Brandon MB

Repro Restriction: The McKee Archives is the copyright holder for the Stuckey materials.

Storage Location: Lawrence Stuckey collection

Images



Great Northern Railway Weed Burner

<http://archives.brandonu.ca/en/permalink/descriptions10011>

Part Of: RG 11 Lawrence Stuckey fonds

Description Level: Item

Series Number: 3.1

Item Number: 1-2002.3.1PE31

Accession Number: 1-2002

GMD: graphic

Date Range: July 18, 1938

Physical Description: 2" x 2 1/2"

Material Details: Negative

History /

Biographical:

According to Stuckey and Bain (1996), "The Brandon, Saskatchewan & Hudson's Bay Railway was built and operated as a totally owned subsidiary of the Great Northern Railway. Construction commenced in late 1905 and by the end of 1905, less than a mile of track had been laid north of the boundary at St. John. In 1906, the remaining 68.6 miles to Brandon were laid and service commenced that year. During the Depression of the 1930s, traffic declined significantly and the entire branch was abandoned in 1936. Over much of the branch's length, the ties and rails were laid on the prairie without ballast and today little remains of the line apart from traces where there were cuts and bridges." (p. 18)

Stuckey, L. A., & Bain, D. M. (1996). The Great Northern and Northern Pacific railways in Canada. Calgary, Alberta: British Railway Modellers of North America.

Custodial History:

For custodial history see the collection level description of the Lawrence Stuckey collection.

Scope and Content:

Great Northern Railway Weed Burner, Rugby, ND.

Notes:	The Great Northern used the same unit on its line to Brandon.
Name Access:	Great Northern Weed Burner Brandon, Saskatchewan & Hudson's Bay Railway Great Northern Railway
Subject Access:	railroads railways weed control Great Northern Railway from Church's Ferry ND to Brandon MB
Repro Restriction:	The McKee Archives is the copyright holder for the Stuckey materials.
Storage Location:	Lawrence Stuckey collection

Images

