

# S. J. McKee Archives

---



## Assiniboine River Bridge North of Kemnay

<http://archives.brandonu.ca/en/permalink/descriptions9920>

Part Of: RG 11 Lawrence Stuckey fonds

Creator: George H. Harris

Description Level: Item

Series Number: 3.1

Item Number: 1-2002.3.1OB5(1)

Accession Number: 1-2002

GMD: graphic

Date Range: [ca. 1938]

Physical Description: 2 1/2" x 2 1/2"

Material Details: Negative

### History /

#### Biographical:

This bridge was condemned in the late 1930s but cyclists continued to use it until it was torn down (approximately 1940)

Until the early 1920s the Canadian Pacific Railway maintained a well and pumping station near the southeast corner of this bridge, which pumped water through a pipeline to a locomotive watering tank at Kemnay.

#### Custodial History:

For custodial history see the collection level description of the Lawrence Stuckey collection.

#### Scope and Content:

##### Assiniboine River Bridge North of Kemnay

Notes: [Mr. Stuckey put a negative and print in the same envelope. We have separated them, numbering the negative OB5(1) and the print OB5(1a).]

Name Access: Assiniboine River Bridge North of Kemnay

Subject Access: manmade geographic features

bridges

Brandon Area Bridges

Repro Restriction: The McKee Archives is the copyright holder for the Stuckey materials.

Storage Location: Lawrence Stuckey collection

## Images

---





## Assiniboine River Bridge North of Kemnay

<http://archives.brandonu.ca/en/permalink/descriptions9921>

Part Of: RG 11 Lawrence Stuckey fonds

Creator: George H. Harris

Description Level: Item

Series Number: 3.1

Item Number: 1-2002.3.1OB5(1a)

Accession Number: 1-2002

GMD: graphic

Date Range: [ca. 1938]

Physical Description: 2 1/2" x 2 1/2"

Material Details: Photograph

### History /

#### Biographical:

This bridge was condemned in the late 1930s but cyclists continued to use it until it was torn down (approximately 1940)

Until the early 1920s the Canadian Pacific Railway maintained a well and pumping station near the southeast corner of this bridge, which pumped water through a pipeline to a locomotive watering tank at Kemnay.

#### Custodial History:

For custodial history see the collection level description of the Lawrence Stuckey collection.

#### Scope and Content:

Assiniboine River Bridge North of Kemnay

Notes: [Mr. Stuckey put a negative and print in the same envelope. We have separated them, numbering the negative OB5(1) and the print OB5(1a).]

Name Access: Assiniboine River Bridge North of Kemnay

Subject Access: manmade geographic features

bridges

Brandon Area Bridges

Repro Restriction: The McKee Archives is the copyright holder for the Stuckey materials.

Storage Location: Lawrence Stuckey collection

## Images

---





## Grand Valley School

<http://archives.brandonu.ca/en/permalink/descriptions9894>

Part Of: RG 11 Lawrence Stuckey fonds

Creator: George H. Harris

Description Level: Item

Series Number: 3.1

Item Number: 1-2002.3.1O2

Accession Number: 1-2002

GMD: graphic

Date Range: 1940

Physical Description: 3 1/2" x 5"

Material Details: Negative

History /

Biographical:

Destroyed by fire in 1958 or 1959.

Custodial History:

For custodial history see the collection level description of the Lawrence Stuckey collection.

Scope and Content:

Grand Valley School

Notes: Located two miles east of First Street on the southeast corner of intersection of [Provincial Road 457].

Name Access: Grand Valley School

Subject Access: schools  
elementary schools  
Brandon Environs

Repro Restriction: The McKee Archives is the copyright holder for the Stuckey materials.

Storage Location: Lawrence Stuckey collection

### Images

---



## Jack Stothard collection

<http://archives.brandonu.ca/en/permalink/descriptions4231>

Part Of: RG 5 Western Manitoba Manuscript Collection

Description Level: Collection  
Accession Number: 1-2003, 12-2006, 8-2007, 8-2008, 18-2008, 11-2009, 4-2012, 4-2013, 8-2016  
GMD: multiple media  
Date Range: ca. 1900s, 2001-2003, 2007, 2008, 2016  
Physical Description: 30 cm textual records  
9 b/w photograph  
Physical Condition: Good

History /

Biographical:

Jack Stothard was born on February 16, 1932 in Brandon, MB. He attended public schools in the city (Central School, Park School, and Earl Oxford) and graduated from Brandon Collegiate Institute (BCI). Stothard married Velma Pollock in 1957 and together they had two daughters: Debra and Kimberly. Stothard was employed in the plumbing and heating business until 1960, when he joined Manitoba Hydro. In the course of his employment with Manitoba Hydro, he became Station Superintendent of the Brandon Generating Station. Stothard retired in 1995. Stothard was a member of the Canadian Numismatic Association, the Canadian Association of Token Collectors and the Toronto Postcard Club. Jack Stothard died on November 3, 2021 in Brandon, MB.

Custodial History:

Accession 1-2003 was in the possession of Stothard until donated to the McKee Archives in 2003. Accession 12-2006 was acquired by Lawrence Stuckey at some point after the photograph was taken. Stuckey later sold a copy of the photograph. This copy was later acquired by Jack Stothard in the course of his collecting of Brandon postcards. Stothard donated the image to the McKee Archives in 2004. Accession 8-2007 was prepared by Jack Stothard in the course of 2007. He provided a copy to the Archives upon its completion. Accession 8-2008 was in the possession of Fred McGuinness until he gave it to Jack Stothard in February 2008. Stothard donated the records to the McKee Archives on February 12, 2008. Accession 18-2008 was donated to the McKee Archives by Stothard on August 18, 2008. Accession 11-2009 was donated to the McKee Archives by Stothard on February 20, 2009. Accession 4-2012 was donated to the McKee Archives by Stothard on August 24, 2011. Accession 4-2013 was donated to the McKee Archives by Stothard in March 2013. Accession 8-2016 was donated to the McKee Archives by Stothard on January 21, 2015.

Scope and Content:

Accession 1-2003 contains brief research reports prepared by Stothard on various topics concerning historical Brandon. These include: a listing of hotels, inns and motels that have operated in Brandon since the 1880s; reports dealing with the Café Aagard, Central United Church, the 1913 Dominion Exhibition, Brandon, the Empire Hotel, Brandon's Central Steam Heating System, the Post Office and the Clement Block. It also contains one booklet: Facts About Brandon: An Industrial Survey of the City of Brandon. Winnipeg: Department of Industry and Commerce [n.d.]

Accession 12-2006 consists of one photograph of the Great Northern Engine 208, built by Rogers Locomotive Company 1887. Cylinders 18 x 24, Drivers 63". G.N. line Church's Ferry, N.D. to Brandon, Manitoba. Opened 1906, Closed 1936.

Accession 8-2007 consists of a brief typed report entitled "The Day the Lights Went Out in Brandon - Strike of 1919" by Jack Stothard. Document provides an account of the sources and delivery of hydro electric power to Brandon beginning in the early 1900s and the brief power outage at the beginning of the Brandon General Strike May 25, 1919.

Accession 8-2008 consists of "The Brandon Sun Challenge Cup" ledger, which contains two b/w photographs, newspaper clippings and information on the history and first race (1908) of the cup: 3 additional b/w photographs of different races: and the Brandon Old Timers

the cup, a collection of photographs of American races, and the Brandon Old Timers Association record book (c. 1900).

Accession 18-2008 consists of a copy of Stothard's Brandon Postcards index. The index is divided into various sub-headings and consists of colored reproductions of postcards in Stothard's collection. The index contains pages that were discarded by Stothard as he updated his inventory, therefore the index is only up to date as of August 18, 2008.

Accession 11-2009 consists of a typed research report entitled "Brandon Police Department Stations and Locations" by Jack Stothard. The report outlines the location of the Brandon Police Department from 1882 - 2008, and also includes a section on "What the Future Holds."

Accession 4-2012 consists of pages for Stothard's Brandon Postcards index (18-2008) and a photocopy of a Brandon Municipal Railway ticket.

Accession 4-2013 consists of eight binders of handwritten notes/facts about Brandon compiled by Jack Stothard. The notes are a collection of names, places, things, events and items related mostly to the first 100 years of Brandon (1882-1982), although the notes continue into the 2000's. Some notes centre on the late 1930's to early 1950's during the period of Stothard's youth. The information in the binders was taken from a variety of publications, while some notes are Stothard's own comments. A list of sources, as well as a cross reference index for all eight binders, can be found in Book No. 1.

The accession includes: Book No. 1 - Notes of Brandon (A to B); Book No. 2 - Notes of Brandon (C to F); Book No. 3 - Notes of Brandon (G to O); Book No. 4 - Notes of Brandon (P to Z); Book No. 5 - Notes of Brandon: Churches, Hospitals, Hotels; Book No. 6 - Notes of Brandon: Police Department, Fire Department; Book No. 7 - Notes of Brandon: Brandon City Council, City of Brandon etc.; Book No. 8 - Notes of Brandon: Brandon College/University, Brandon Schools, ACC, Brandon School Board. Accession also includes pages from Stothard's Brandon Postcards index (18-2008).

Accession 6-2016 consists of local history books, pamphlets, bakery tokens, local magazines, one binder containing handwritten notes/facts about Brandon compiled from the Brandon Sun's "Looking Back" column, and an accordian file box containing newspaper clippings about Brandon.

The accession includes the following local history books: Betty Watson's "One Day in Brandon Manitoba 9/9/99" (Brandon, Manitoba: Bart Art Books, 1999); P.N. Breton's "Popular Illustrated Guide to Canadian Coins, Medals, & .& .," (Winnipeg: Canadian Numismatic Publishing Institute, 1963 [reprint]); "Facts About Brandon: An Industrial Survey of the City of Brandon," (Province of Manitoba: Department of Industry and Commerce, [1946]); The Polish Gymnastic Association Sokol's "75th Anniversary: From the Past to the Future!" ([Brandon, Manitoba: Polish Gymnastic Association Sokol, 1988]); and Brandon Kinsmen Club's "'Together...Once Again': A History of the Kinsmen Club of Brandon, Manitoba, 1925-1975" (Brandon, Manitoba: The Historical Committee of the Kinsmen Club of Brandon, 1975).

Pamphlets and magazines include: Brandon Generating Station (1957) and (1969), The Brandon Quota Club presents...A Century in Revue (1982), Canadian Rail No. 168/July-August 1965 [featuring Brandon Municipal Railway], Prairie City Issue No. 3/1994, and Prairion May/June 1997.

The binder is titled Book No. 9 - "Year by year: miscellaneous items from 1969 to 2000"; an asterik (\*) indicates notes have been made on each subject or item in the other Books. Each section is housed in

The files in the accordian file box have been rehoused and include the following topics: banks, Brandon 125 beer, Behlen Industries, breweries, Brandon Shoppers' Mall, calendars, Canadian Motor Ltd. Canada/Novus, Canada Games, Summer and Winter, Canadian Tire

Canadian Motors Ltd., Canexus/nexen, Canada Games - Summer and winter, Canadian Tire, CKX Radio & TV/CKLQ, Corral Centre, flour mills, hospitals, Keystone, Maple Leaf, Fred McGuinness, miscellaneous, A.E. McKenzie, people, railways, Simplot, Westman Recycling (new facility), weather-storms-floods, and extra copies of postcards.

Notes: Description by Christy Henry. Accession 4-2013: Book No. 1 contains a photocopied photograph of Aagaard's Cafe, photographs of the Dominion Bank and Barney's Drive Inn and a photo reproduction of the Bass Building. Book No. 2 contains a photograph of the Provincial Goal. Book No. 3 contains photographs of T. Eaton Company (4 construction photos) and a photo reproduction of tents on the Exhibition grounds (c. 1940). Book No. 4 contains photographs of the Oak Theatre and Western Motors. There are also photopied photographs of The Fun Shop.

Name Access: Jack Stothard  
Cafe Aagard  
Great Northern Railway  
Aagaard's Cafe  
Lunch Counter  
A-4 Military Camp  
Alcoholism Foundation of Manitoba  
Amberwood Village  
Anglo Canadian Oils Ltd.  
Applebee's Neighbourhood Grill & Bar  
The Brandon Armoury  
Army & Navy Store  
Art Gallery of Southwestern Manitoba  
Assiniboine River  
Atom-Jet Industries Ltd.  
Aub's B.A. Service Station  
Frederickson's B.A. Service Station  
A&W Restaurant  
A&W Drive-In  
Ayerst Organics Ltd.  
Bank of British North America  
Bank of Hamilton  
Bank of Montreal  
Bank of Nova Scotia  
Canadian Bank of Commerce  
Canadian Imperial Bank of Commerce (CIBC)  
Dominion Bank  
Imperial Bank of Canada  
Merchants' Bank of Canada  
The Northern Bank  
Royal Bank of Canada  
Toronto Dominion Bank (TD Bank)  
Union Bank of Canada  
Barney's Drive Inn  
Barney's Shoe Shine  
Bass Building

Bass families  
Beacon Lunch  
Behlen Industries/Behlen-Wickes Co. Ltd.  
Belair Chinese Restaurant  
Belvedere Apartments  
Beresford Lumber Co.  
Bertrands Block  
Bertrand & Company  
Beverage Services Limited  
Coca-Cola Bottling Company  
Dr. Wilfred Bigelow  
Bing Jukes Drive Inn  
Binkley Motors  
Donald "Tiny" Bird  
Blackwood's Ltd.  
Blackwood Beverages Ltd.  
Borbridge Block  
Boreham Park Apartments  
Bower's Esso Service  
The Brandon Bowl  
Recreation Bowling Alleys and Billiard Room  
Thunderbird Bowl  
Marsh Varcoe  
Woodbine Alleys Ltd.  
Box Brothers Ltd.  
Braecrest Estates  
Brandon Airport  
Brandon Aero Club  
Brandon Flying Club  
Brandon Allied Arts Centre  
Brandon Automobiles (1959) Limited  
Brandon Binder Twine Company  
Brandon Brewing Co.  
Brandon Business College  
Brandon Chamber of Commerce  
Brandon Clinic  
First Street Plaza  
The Brandon Club  
Brandon Consumer Co-operative Ltd. (Co-op)  
Brandon Construction Company Ltd.  
Brandon Correctional Institute  
Brandon Jail  
Brandon Creamery & Supply Co. Ltd.  
Brandon Creamery & Supply Co.  
Brandon Curling Club



Brandon Eagles Gymnastics Centre  
Brandon Electric Light Company  
Manitoba Power Company  
Brandon Felt Works  
Brandon Fire Engine Co.  
The Brandon Fruit & Procude Co. Ltd.  
Brandon Gallery Shopping Centre  
Town Centre  
Brandon Golf & Country Club  
Brandon Hardware Co. Ltd.  
Ashdown's hardware  
Stylrite Hardware  
Brandon Heating and Plumbing  
Brandon Houseing Co-operative Ltd.  
Aspen Woods  
Brandon Humane Society  
Brandon Machine Works  
Brandon Municipal Street Railway  
Brandon Museum Inc.  
Daly House Museum  
Brandon Musical Supply Company  
Brandon Packers Ltd.  
Brandon Scrap Iron & Metal Recycling Ltd.  
Brandon Ski Club  
Mt. Glenorky Ski Club  
Brandon Stock Car Club  
Brandon Sun  
The Sun Printing Co.  
Brandon Tennis Club  
Brandon Tourist Camp  
Brandon Transit Ltd.  
Brandon Transit System  
Handi Transit  
Brandon Woolen Mills  
Metev Woolen Mills  
Bliss Building  
Brazzell Motors  
Brentwood Village Moble Home Court  
Breslauer & Warren Jewelers  
First Street Bridge  
1st Street Bridge  
Eighteenth Street Bridge  
18th Street Bridge  
Daly Overpass  
Thompson Bridge

Eighteenth Street Overpass  
18th Street Overpass  
8th Street Bridge  
9th Street Bridge  
Eighth Street Bridge  
Pedestrian Bridge  
British Commonwealth Air Training plan  
British Commonwealth Air Training Plan Museum  
Bockie-Donovan  
Roy Brown  
La Plant Block  
Fraser Block  
Syndicate Block  
Laplont Block  
Johnson & Company Hardware  
Zink Block  
Yukon Block  
Burchill & Howey  
Burns Foods Ltd.  
Burns Meats Ltd.  
Bus Depot  
Greyhound Bus Lines  
Grey Goose Bus Lines  
MacArthur & Son Ltd.  
CDC Home & Leisure Centre  
Campbell & Campbell Building  
Campbell & Ferguson Building  
Canada Safeway Ltd.  
Canada Summer Games  
Canada Winter Games  
Canadian Brown Steel Tank  
Canadian Steel Tank Ltd.  
Canadian Mental Health Association  
Canadian Motors Ltd.  
Canadian National Railway (CNR)  
Canadian Order of Foresters  
Canadian Pacific Railway (CPR)  
Canadian Phoenix Insurance Co.  
Canadian Stover Gasoline Engine Co.  
Canadian Tire Store  
Cancade Co. Ltd.  
Cancade Bros.  
Cancade Bros. Ltd.  
Cancade Company  
Cando Contracting Ltd.

Cargill Grain Company  
Central Community Centre  
Central Park Lodge  
Valleyview Care Centre  
Central Sheet Metal Works  
Child & Family Services of Western Manitoba  
The Children's Aid Society  
Chrest's Dry Cleaners  
Chrest family  
Christie's Bookstore  
Christie's School Supply  
Christie Grant Store  
Sir Winston Churchill Park  
Circle Eight Drive Inn  
City Cafe  
City Golf Course  
CKLQ  
CKX  
Clark Leatherdale Funeral Home  
Clement Block  
Cockshutt Plow Co.  
Codville & Co.  
Commodore Bakery Ltd.  
Trent's Bakery  
Coldwell Block  
Coronation Park  
Jubilee Park  
Corral Centre  
The Country Kitchen Restaurant  
Aunt Sarah's Family Restaurant  
Country Style Donuts  
Court House  
Crane Limited  
Crane Steel Structures Ltd.  
Crang's Grocery & Confectionery  
Dairyworld Foods  
Creelman's Shoe Store  
Cumming & Dobbie  
Curran Park  
Curtis Block  
Yaeger Block  
Daymin Court  
Bell Block  
De Bruyn & Verhoef Woodworks Ltd.  
De Fehr Furniture

Denis Prefab Ltd.  
Diamond Waterworks  
Dinsdale Cartage & Storage (1968) Ltd.  
Dinsdale Park  
Doig & Robertson  
Rankin & Co.  
Doig, Rankin & Robertson  
Doig's Store Ltd.  
Double Bar S Burger & Dairy Ranch  
The Drewry's Ltd.  
Alexander Brown  
Brown's Drug Store  
Dufresne Furniture & Appliances  
Dutch Mill Bakery  
East End Community Centre  
Eastern Access Route (Highway 110)  
Eaton's of Canada  
T. Eaton Company  
Edrans Brandon Pressed Brick Co.  
Eleanor Kidd Park  
Eleanor Kidd Gardens  
W.A. Elliott  
T.E. Elviss Company  
Empire Brewing Co. Ltd.  
Bell Bottling Co.  
Esquire Dance Hall  
Connaught Hall  
Evans, Matheson & Associates  
Experimental Farm  
Brandon Research Station  
Fairview Personal Care Home  
Feed Rite Mills Ltd.  
Federal Pioneer Ltd. (FPE)  
Federated Co-operatives Ltd.  
Fedoruk Groceteria  
Flash Barber Shop and Beauty Salon  
Alexander Fleming  
Fleming's Drug Store  
Fleming Block  
Fleming's Well  
Fort Brandon Museum  
A.C. Fraser & Co.  
Fraser & Ross  
Fred's Dry Cleaners  
Frost & Wood

Brockie Funeral Home  
Campbell & Campbell  
Vincent & Macpherson  
Galaxy Computer Systems  
George's Food Bar  
George Jimas  
Gidding's Store  
Gillis & Warren Ltd.  
Golden Gate Cafe  
Gooden's Men's Wear  
Grand Stand  
Grand Valley Place  
The Great West Coal Copmany Ltd.  
Great Western Outerwear & Sportswear Ltd.  
Green Acres Community Centre  
Green Acres Lodge  
Green Acres subdivision  
Habitat for Humanity  
B.J. Hales Natural History Museum  
Hamilton and Jones Ltd.  
Hanbury Manufacturing Co.  
Hanbury House  
T.M. Harrington  
Harry's Ukrainian Kitchen & Steak House  
Hedges Trucking  
Heise Block  
Heritage Co-op 1997 Ltd.  
Highland Park Mobile Home Estate Ltd.  
Hillcrest Place Personal Care Home  
Hillside Town Houses  
Manitoba Infrastructure & Transportation  
Highways Deparment  
Hobbs Manor  
Home Development Co. Ltd.  
Home Estates Ltd.  
Home Hardware  
Hopkins Bakery  
Horner's Busy Corners  
Hornor's Busy Corners  
Paterson House  
Matheson House  
Villa Louise  
Row House  
Hudson House  
Casa Maley

Hughes & Long  
Hughes & Co.  
Husky Oil & Refining Ltd.  
Husky Travelcentre  
Husky House  
Locomart  
North Hill IGA  
West End IGA  
Sobeys  
Immigration Hall  
Imperial Square  
Indian and Metis Friendship Centre  
International Harvester Co. of Canada Ltd.  
Inventronics Ltd.  
Jacobson and Greiner Ltd.  
J&G  
The Jo-Ann Accessory Shop  
John Deere Plow Company  
Johnson's Cafe  
Johnson's Hardware Store  
Kam Lung Restaurant & Cocktail Lounge  
Martin Kavanagh  
Keg Steakhouse & Bar  
Kelly Block  
Kelly & Co.  
P.A. Kennedy Co. Ltd.  
Keystone Centre  
Kinsmen Club  
Kinsmen Kiddies Korner  
Kinsmen Centennial Swimming Pool  
Kinsmen Outdoor Skating Rink  
Kinsmen Memorial Stadium  
Kinsmen Little League Stadium  
Kin Village  
Kinsmen Zoo  
Kip's Service Station  
Brigadier General James Kirkcaldy  
Kirkcaldy Heights (North Hill) sub-division  
Kiwanis Club  
Kiwanis Swimming Pool/Paddling Pool  
Kmart  
Knowlton's Boot Shop  
S.S. Kresge Co. Ltd.  
Kullberg's Furniture Store  
Lake Brandon

Land Titles Office  
Lark Hill sub-division  
Larry's Studio  
Lawson Lodge  
Prairie Oasis  
Frank Lawson & Sons  
Leech Printing  
Lee's Implements Ltd.  
Brandon Public Library  
Centennial Library - Arts Centre  
Western Manitoba Regional Library  
Lindenberg Brothers Limited  
Linden Lanes  
Lions Club  
Lion's Manor  
Westman Lion's Manor Inc.  
Linden Lanes Shopping Centre  
Red & White Store  
Lyceyn Tea Room  
MacArthur Transportation Co.  
Soo-Security Motorways Ltd.  
M.F. MacDonald  
Macey Foods Ltd.  
G.C. (Curly) MacKay  
MacLeods Store  
Magnacca Enterprises  
Manitoba Centennial 1970  
Manco  
Manitoba Cooperative Dairies Ltd.  
Manitoba Dairy and Poultry Cooperative Ltd.  
The Manitoba Hardware & Lumber Co. Ltd.  
Manitoba Emergency Services College  
Manitoba Engines Ltd.  
Manitoba Felt & Yarn Works - Brandon  
Manitoba Government Building  
Manitoba Housing & Renewal Corporation  
Manitoba Housing Authority  
Manitoba Motor Transit Ltd.  
Manitoba Pool Elevators  
Agricore  
Manitoba Public Insurance Corporation  
Autopac  
MPI  
The Manitoba Windmill & Pump Co. Ltd.  
Brandon Gas & Power Co. Ltd.

Maple Leaf Flour Mills  
Maple Leaf Pork  
Maple Leaf Meats  
Maple Leaf Foods  
The Maples  
Mark's Work Wearhouse  
D. Marshall  
Massey-Harris Co. Ltd.  
Massey-Ferguson Building  
Massin Furs  
Frank Massin & Son Hide & Furs  
Masonic Temple  
Dr. J. Murray Matheson  
McCallum Jewellers  
McCallum Nursing Home  
McCall Frontenac  
Texaco  
McDiarmid & Clark  
McDonald & Foreman  
John A. McDonald & Son  
McDowell & Doke Tinsmiths'  
McGregor's Livery Sale & Boarding Stable  
J.D. McGregor  
Malcolm McAdam McGregor  
Fred McGuinness  
A.E. McKenzie Seed Co. Ltd.  
A.E. McKenzie House  
Meadowlark Campground  
Memories Chapel and Pre-planning Centre  
Metropolitan Cafe  
Metropolitan Store  
Meyers Norris Penny  
Miladi's - The House of Ladies' Quality Apparel  
Mitrou Cafe & Candy Company  
Modern Dairies  
Monterey Estates  
Sunridge Homes Ltd.  
Morgon Motors  
Moxie's  
Blue Hills restaurant  
Perkin's Restaurant  
William Muir General Grocer  
Murray Chev Olds-Cadillac Ltd.  
Mutter Brothers  
Nation & Shewan



National Store  
Neale, Stothard & Chapman  
The Newmount Medical Clinic  
Nexen Chemicals Inc.  
Canexus Ltd.  
New System Store  
North End Community Centre  
Northside Mazda  
Oddfellows Corner  
Ogilvie Co.  
Old Men's Home  
Charlton Lodge  
Olympia Cafe  
Orange Hall  
Grand Orange Lodge  
Orchard Hardware Co.  
Oshkosh Filter and Softener Co.  
Pacific 66 Service Station  
Palladium Dance Hall  
Park Community Centre  
Parker's Restaurant  
Charlie Coyote's  
Park View Apartments  
George A. Paterson  
Patmore's  
Paul's Hauling Ltd.  
A.E. McKenzie  
Jack Hawson  
Christopher David Mitrou  
A. Reginald McDiarmid  
Tony Macialek  
Alex Mowat  
David Weiss  
Joseph Whitehead  
Steward Shultz  
Harry Cater  
Charles Pilling  
Robert Coombs  
William Henderson  
Arthur Johnson  
George W. Noble  
T.J. Beaubier  
Harry Brown  
Frank Massin  
H.L. Patmore

Jack MacArthur  
Flora Cowan  
P.A. Kennedy  
George Fitton  
William Ferguson  
Jack Coleman  
A.E. Smith  
J.C.P. Mitchell  
Joseph Boyarski  
W.T. "Bud" Higgins  
Colonel Charles Whillier  
Benjamin Hales  
Fred Young  
Wilfred Bigelow  
Gabriel Charles (Barney) Mollot  
E.J. Tyler  
Pierre Cancade  
George Sykes  
G.R. Rowe  
George Bass  
Ritchie (Bob) Macpherson  
Leslie Alexander McKay  
Herbert Samuel Sharpe  
Tom Ryles  
Harold George Dinsdale  
Paul Leon Regis Cancade  
Eleanor Kidd  
Cecil Webb  
Edmond Fotheringham  
Roy B. Hunter  
Jack Donnelly  
Ian M. Brown  
Charles Goucher  
Lenton James Rust  
Harold B. Smith  
Milton Tinline  
Keith Hurst  
Ernest Jerrett  
Pearl Treleaven  
Hugh Rice  
Cec Leech  
William Gooden  
William Samuel Gooden  
Sam Wong  
George Mason Henderson Bain

William Webster Fotheringham  
Alex McPhail  
Richard Patmore  
Sandy Patterson  
J.R.C. Evans  
John Shurb  
Joseph Frederick  
Ronald Relf  
William Speakman  
David Norris  
Myheer Crystal  
Mrs. Joseph Whitehead  
Gus Hendzel  
Stuart Craig  
Krug Crawford  
Walter Hutchings  
Lorne Duncan McDonald  
Max Szturm  
Henry Perdue  
Samuel Harris  
Charles Lightbody  
Boom Cristal  
Russell Fedoruk  
James Creighton  
Jack Kullberg  
D.R. MacKay  
W. Norman Hargreaves-Mawdsley  
Reg Poole  
Stephen William Bass  
A.B. Downing  
Ernestine Whiteside  
Albert St. Clair Rumball  
Alfred Veale  
Clive Porteous  
G.T. McNeil  
J. Stuart Thompson  
William Bertrand  
Stephen Magnacca  
Charles Unicume  
Franklin Williamson  
P.J. Harwood  
Donn Mitchell  
David Brownridge  
George Mutter  
J.E. Matthews

Mary Waddell  
Alfred James Eamer  
Herbert Stuart  
Curly MacKay  
Betty Gibson  
Louisa Eagle  
Ewart Murray  
Marion Doig  
Arthur Gordon Buckingham  
Ernest Christie Whitehead  
Daniel Cristall  
Gordon Sefton  
Robert Brockway  
H.O. McDiarmid  
Glen Fowler  
Arthur Augustus Harris  
James Munro  
Thomas Stark  
Howard B. Smith  
Reginald Edward Unicume  
Elwood Gorrie  
James "Skip" McFarlane Mitchell  
Turk Broda  
Henry Neudorf  
John Boyd Craig  
Walter Dinsdale  
A.B. Knowlton  
John R. Brodie  
Walter Shillinglaw  
Zena Hurst  
H. Vincent Kidd  
People's Market Place  
Perkins Family Restaurant  
Pizza Hut  
Pizza Place  
Planet KIA  
Ponderosa Steak House  
Pool Packers  
The Porteous Manufacturing Company  
Princess Auto Ltd.  
Princess Park Apartments  
Princess Towers Apartments  
Provincial Building  
Federal Building  
Pue's Interior Furnishings Ltd.

Quality Groceteria  
Queen's Court  
Queen Elizabeth Park  
Ravenscourt Apartments  
R.C.A.F. No. 2 Manning Depot  
R.C.A.F. No. 12 Service Flying Training School  
Brandon Rec Centre  
Red Cross Drug Store  
Rehab Industries of Western Manitoba  
Reliance Machine and Motor Company  
Rendering Plant  
Ressor's Jewellery Store  
Richmond Gardens Apartments Ltd.  
Richmond Shoe Store  
Ricki's Ladies' Ready to Wear Store  
The Ricksha Restaurant  
Rideau Park  
Rideau Park Personal Care Home  
Ritz Cafe  
Riverbank Discovery Centre  
Riverheights Terrace  
Riverview Curling Club  
Robins Donuts  
Rosenman's Furniture  
Royal Canadian Legion Brandon Branch No. 3  
Royal Canadian Legion Wheat City Branch No. 247  
RCMP  
Safety Service Station  
Don Gamble  
Sander's Drug Store  
Wellman's Drug Store  
Scotia Towers  
Scott Fruit Company  
Security Building  
Seniors for Seniors  
Tony's Shamrock Lunch  
Vic Sharpe  
Shaver's Furs Ltd.  
Simpson Sears/Sears Canada  
Shoppers Mall Brandon  
Brandon and Distric Shriner's Club  
Shur-Gro Farm Services Ltd.  
Simplot Canada Ltd.  
Koch Fertilizer Canada  
Thomas Sinclair

Sixteenth Street Beach  
John E. Smith Block  
Smith & Burton  
Smith Carter Searle Associates  
Smith's Lumber Ltd.  
Smith's Tobacco Shop  
Smitty's Restaurant  
Snye Bridge/Snye River  
Sokol Hall  
Sokol Manor  
Somerville & Co.  
Soo's Chop Suey House  
South End Community Centre  
Spin Well Woolen Mills Co. Ltd.  
Sportsplex  
Harold Spratling  
The Spruce Woods Housing Cooperative Ltd.  
Stanley Park  
West End Park  
Stan's IGA/Stan's Fine Foods  
Staples Business Depot  
O. Stark & Son  
Steel Store  
Strand Theatre  
Strathcona Apartments  
Isaiah Strome  
Stuarts News & Cigar Store  
Lawrence Stuckey  
Suburban Restaurant  
Sun Cafe  
The Sun Printing Company  
Superstore  
Super Thrifty Drugs  
Sykes Slide  
Ted Hill's Meat Market  
MTS  
Texaco-Lone Star Service Station  
Allen Theatre  
Bijou Theatre  
Capital Theatre  
Landmark Cinema  
Empire Theatre  
Green Acres Drive-In Theatre  
Lucky Star Drive-In Theatre  
Oak Theatre

Orpheum Theatre  
Palace Theatre  
Princess Theatre  
Sherman Theatre  
Starland Theatre  
Town Cinema  
Willis Theatre  
The Avenue Groceteria  
The Fun Shop  
Thomas Mall  
Thompson Grocery  
Train Drive-In & Dairy Bar  
Trans-Canada Highway  
Travellers Day Parade  
Trotter & Trotter  
Tuberculosis Act  
United Commercial Travellers of America  
UCT  
United Grill  
United Cafe  
United Pacific Company Ltd.  
United Services Recreation Centre  
Upton Apartments  
Valleyview Subdivision  
Velvet Dip  
Venice House Restaurant  
Victoria Curling Club  
Victoria Rink  
Victory Cafe  
The Vogue  
Waddell's Children's Store  
Wade & Sons Ltd.  
Wally Byam Caravan Club International  
Watt's Men's Wear  
Welder Supplies Ltd.  
Wendy's Restaurant  
West End Community Centre  
Westbran Stadium  
Neil Andrews Field  
Western cooperative Fertilizers Ltd.  
Western Concrete Products Ltd.  
Western Grocers Ltd.  
Western Manitoba Centennial Auditorium  
Western Medical Clinic  
Western Motors Ltd.

Westman Communications Group  
Westman Media Cooperative  
Westman Kiwanis Courts  
Westoba Credit Union  
Wheat City Arena  
Winter Fair Building  
Wheat City Business College  
Wheat City Curling Club  
Wheat City Motors  
Whyte's Pantry Grocery  
White Rose Service Station  
Willingdon Apartments  
Willson Stationery Company  
Wilton Motors Ltd.  
Winnipeg House  
F.W. Woolworth Store  
Wright & Wightman  
Yaeger's Furs  
YMCA  
YWCA  
Zenith Paving Ltd.  
Zeller's  
Zink's Grocery  
First Baptist Church  
Bethel Temple  
Pentecostal Tabernacle  
Bethel Christian Assembly  
McDiarmid Drive Alliance Church  
Calvary Temple  
St. Paul's Presbyterian Church  
St. Paul's United Church  
Central United Church  
First Church of Christ Scientist  
Church of the Nazarene  
First Christian Reformed Church  
First Church United  
First Methodist Church  
Methodist Church  
First Presbyterian Church  
Full Gospel Church  
Four Square Gospel Church  
Grace Lutheran Church  
Grace Mennonite Church  
Grand Valley Community Church  
Jewish Synagogue



Kingdom Hall of Jehovah Witnesses  
Knox United Church  
Knox Presbyterian Church  
First Lutheran Church  
Lutheran Redeemer Church  
Madison Crescent Baptist Church  
Mennonite Mission Church  
Mevlana Canadian Heritage Islam Society  
Richmond Park Mennonite Brethren Church  
Saint Andrews Presbyterian Church  
St. Augustine's Church  
St. George's Anglican Church  
St. Hedwig's Catholic Church  
St. Joseph's Polish National Catholic Church  
St. Mary's Ukrainian Catholic Church  
St. Matthew's Cathedral  
The Salvation Army  
Brandon Citadel Corps  
Eventide Home  
Bullock-Booth Home  
Dinsdale Personal Care Home  
St. Mary's Anglican Church  
Southminster Presbyterian Church  
Trinity United Church  
Ukrainian Orthodox Church of Holy Ghost  
Victoria Avenue Methodist Church  
Brandon General Hospital  
Assiniboine Hospital  
Brandon Regional Health Centre  
Brandon Regional Health Authority  
A4 Military Training Camp  
Fort Brandon Barracks  
Brandon Mental Health Centre (BMHC)  
Child & Adolescent Treatment Centre  
Albion Hotel  
American House  
Arlington Hotel  
Barney's Motel  
Beaubier House  
Beaubier Hotel  
Mr. Bee's Inn  
Best Western Brandon Inn  
Brandon Hotel  
Brandon House  
Brunswick House

Canad Inns  
Canadian Inn  
Knights Inn  
Casa Blanca Motel  
Cecil Hotel  
Chalet Inn Motel  
Central Hotel  
Chester House  
City Hotel  
Coachman Inn Motel  
City Centre Hotel  
Colonial Inn  
Comfort Inn Motel  
Journey's End Motel  
Crystal Hotel  
Crystal's Grand View Hotel  
Days Inn  
Douglas House  
Empire Hotel  
Edie House  
Grand Central Hotel  
Grand Union Hotel  
Harris House  
Highland Park Motor Lodge  
Hillcrest Motel  
Imperial Hotel  
Kelly House  
King Edward Hotel  
Keystone Motor Inn  
Lakeview Inn & Suites  
Lamp Lighter Motor Lodge  
Lambton House  
Langham Hotel  
Little Chalet Inn Motel  
Merchant's Hotel  
Midway Motel  
Motel Rambler  
Motel 6  
New Pacific Hotel  
Nite Rest Cabins  
North Hill Motel  
Ottawa Hotel  
Ontario House  
One & Ten Motel  
Pacific Hotel

Palace Hotel  
Prince Edward Hotel  
Queens Hotel  
Ramada Inn  
Red Oak Inn  
Redwood Inn  
Redwood Motor Inn  
Redwood Travelodge  
Reno Hotel  
Rodeway Inn Motel  
Roseland Hotel  
Royal Arms Hotel  
Royal George Hotel  
Royal Hotel  
Royal Oak Inn  
The Scotsman Motel  
Shore House  
Star & Garter Hotel  
Sunset Motel  
Starlight Motel  
Super 6 Motel  
Super 8 Motel  
Trails West Motor Inn  
Transit House  
Travelodge  
Twin Pines Motel  
Victorial Hotel  
Victoria Inn  
Western Motel  
Wheat City Hotel  
Windsor Hotel  
G.W. Alexander  
E.G. Wiswell  
John Richards  
Thomas Hudson  
John Melhuish  
Alexander Mowat  
George Bain  
Jack Carey  
Edward Polnick  
Gary Winters  
Rick Gregoire  
Brent Dane  
Archibald McMillan  
Peter Duncan

Jack Foster  
Watson Boyd  
E.G. Berry  
Joseph Robert Hardy  
Charlie Goucher  
Harry Bernard Everett  
John Little  
Harry Collister  
Roger Hines  
David McNamee  
Ken Elliott  
Keith Buizer  
Brian Scott  
Dick Scott  
Richard Bruce  
Harley Bryson  
Keith Atkinson  
Ian Grant  
City Hall  
Brandon City Council  
City of Brandon  
Brandon Cemetery  
Brandon School Board  
Brandon School Division  
Alexandra School  
Assiniboine Community College  
Assiniboine School  
Betty Gibson School  
Brandon Collegiate Institute (BCI)  
Central School  
Crocus Plains Regional Secondary School  
David Livingstone School  
Earl Haig School  
Earl Oxford School  
East Ward School  
Fleming School  
George Fitton School  
Green Acres School  
Harrison High School  
Harrison Middle School  
Christian Heritage School  
Indian Industrial School  
Indian Residential School  
King George School  
Kirkcaldy Heights School

Linden Lanes School  
 Lions School  
 McLaren School  
 Meadows Elementary School  
 Neelin High School  
 New Era School  
 Brandon Normal School  
 Brandon Agricultural & Homemaking School  
 Agricultural Extension Centre  
 North Ward School  
 Park School  
 J.R. Reid School  
 Riverheights School  
 Riverview Elementary School  
 Sacred Heart School  
 St. Augustine's School  
 St. Joseph's Academy  
 St. Michael's Convent  
 St. Michael's Academy  
 Technical School  
 Valleyview Centennial School  
 Vincent Massey High School

Subject Access:

Waverly School  
 Dominion Exhibition Brandon (1913)  
 West Ward School  
 Brandon College  
 Brandon University  
 Brandon Generating Station  
 Brandon Quota Club  
 Polish Gymnastic Association Sokol  
 Sokol  
 Buildings  
 bus transportation  
 Canada's centennial  
 circuses  
 creameries  
 dairies  
 druggists  
 drug stores  
 Grain elevators  
 fairs  
 exhibitions  
 Flour mills  
 funeral homes  
 funeral chapels  
 gasoline

garbage dumps  
landfills  
recycling  
Transportation  
houses  
ice houses  
ice wagons  
IGA stores  
grocery stores  
infantile paralysis  
polio  
laundries  
manufactured gas  
street names  
natural gas  
newspapers  
public utilities  
Brandon General Strike  
hydro  
police department  
parking  
parking meters  
population  
post offices  
prohibition  
alcohol regulations  
rationing  
roller rinks  
skate board parks  
floods  
telephone services  
theatres  
highways  
Housing  
waterworks  
sewers  
weather  
snowstorms  
churches  
hospitals  
military hospitals  
hotels  
fire chiefs  
fire department  
police chiefs

judicial system

city boundaries

salaries

mayors

city engineers

city managers

Brandon's 75th Anniversary

Brandon's centennial

Storage Location:

tokens  
2003 accessions

4-2013 with 2013 accessions

Storage Range:

2003 accessions, 2013 accessions; loose photographs from the 8-2008 accession are located in the RG 5 photograph storage drawer.



## CNR Station at Prince Edward Hotel

<http://archives.brandonu.ca/en/permalink/descriptions9965>

Part Of: RG 11 Lawrence Stuckey fonds

Creator: George H. Harris

Description Level: Item

Series Number: 3.1

Item Number: 1-2002.3.1PC4

Accession Number: 1-2002

GMD: graphic

Date Range: June 1940

Physical Description: 3 1/2" x 5"

Material Details: Negative

Custodial History:

For custodial history see the collection level description of the Lawrence Stuckey collection.

Scope and Content:

[East side of Prince Edward Hotel railway station; facing Ninth Street]

Notes: Copy LAS.

Name Access: Prince Edward Hotel

CNR Station

Subject Access: railway stations

hotels

Brandon hotels

Canadian National Railways in Brandon - Early

Repro Restriction: The McKee Archives is the copyright holder for the Stuckey materials.

Storage Location: Lawrence Stuckey collection

### Images

---







## Prince Edward Hotel - Railway Station

<http://archives.brandonu.ca/en/permalink/descriptions9419>

Part Of: RG 11 Lawrence Stuckey fonds

Creator: George H. Harris

Description Level: Item

Series Number: 3.1

Item Number: 1-2002.3.1DC6f(2)

Accession Number: 1-2002

GMD: graphic

Date Range: June 1940

Physical Description: 3 1/2" x 5"

Material Details: Negative

Custodial History:

For custodial history see the collection level description of the Lawrence Stuckey collection.

Scope and Content:

[East side of Prince Edward Hotel railway station; facing Ninth Street]

Notes: [Mr. Stuckey put six negatives (3 combined negatives) in one envelope. We have separated them and numbered them DC6f(1) through DC6f(6). From a combined negative.]

Name Access: Prince Edward Hotel  
Canadian Northern Railway  
Canadian National Railway

Subject Access: railway stations  
hotels  
Brandon hotels

Repro Restriction: The McKee Archives is the copyright holder for the Stuckey materials.

Storage Location: Lawrence Stuckey collection

### Images

---





## Wheat City Arena

<http://archives.brandonu.ca/en/permalink/descriptions9306>

Part Of: RG 11 Lawrence Stuckey fonds

Creator: George H. Harris

Description Level: Item

Series Number: 3.1

Item Number: 1-2002.3.1D17

Accession Number: 1-2002

GMD: graphic

Date Range: 1938

Physical Description: 2 1/2" x 4 1/2"

Material Details: Negative

### History /

#### Biographical:

Razed January 1970.

#### Custodial History:

For custodial history see the collection level description of the Lawrence Stuckey collection.

#### Scope and Content:

Wheat City Arena (Winter Fair Building)

#### Notes:

Southeast corner of 11th Street & Victoria Ave.

From the collection of George H. Harris, Winnipeg, Man.

Creator provided by the Fred McGuinness collection (20-2009).

#### Name Access:

Wheat City Arena

Royal Manitoba Winter Fair

#### Subject Access:

Arenas

exhibitions

fairs

Brandon Public Buildings

#### Repro Restriction:

The McKee Archives is the copyright holder for the Stuckey materials.

#### Storage Location:

Lawrence Stuckey collection

## Images

---





## Dismantling of Streetcar No. 8

<http://archives.brandonu.ca/en/permalink/descriptions9731>

Part Of: RG 11 Lawrence Stuckey fonds

Creator: George H. Harris

Description Level: Item

Series Number: 3.1

Item Number: 1-2002.3.118

Accession Number: 1-2002

GMD: graphic

Date Range: October 1937

Physical Description: 2 1/2" x 3 1/2"

Material Details: Negative

Custodial History:

For custodial history see the collection level description of the Lawrence Stuckey collection.

Scope and Content:

Dismantling of Streetcar No. 8

Notes: Photo was taken outside the car barn, located at the corner of First Street and College Avenue

Name Access: Brandon Municipal Railway

Subject Access: public transit

streetcars

Brandon Street Railway

Repro Restriction: The McKee Archives is the copyright holder for the Stuckey materials.

Storage Location: Lawrence Stuckey collection

### Images

---





## Streetcar Bodies in Tourist Park

<http://archives.brandonu.ca/en/permalink/descriptions9732>

Part Of: RG 11 Lawrence Stuckey fonds

Creator: George H. Harris

Description Level: Item

Series Number: 3.1

Item Number: 1-2002.3.119

Accession Number: 1-2002

GMD: graphic

Date Range: 1937

Physical Description: 2 1/2" x 3 1/2"

Material Details: Negative

### History /

#### Biographical:

Due to the increasing volume of long-distance auto traffic in the 1920's, the city designated the block between Hill & Queen's Avenues and 9th & 10th streets as a "Tourist Camp" with a few basic facilities. After the demise of the Brandon Municipal Railway, several of the old car bodies were placed in the Tourist Camp to be used as cooking & eating shelters. Some may have had sleeping accommodations. Later (ca. 1938?) several were placed in a row along the south side of Victoria Avenue, approximately 28th or 29th St, and were used as the city's first drive-in hamburger place, "The Train Drive-in". This, I believe, only lasted one or two summer seasons. LAS.

#### Custodial History:

For custodial history see the collection level description of the Lawrence Stuckey collection.

#### Scope and Content:

##### Streetcar Bodies in Tourist Park

Name Access: Brandon Municipal Railway

Subject Access: public transit

streetcars

Brandon Street Railway

Repro Restriction: The McKee Archives is the copyright holder for the Stuckey materials.

Storage Location: Lawrence Stuckey collection

## Images

---





## CPR Shop Buildings, Water Tower, and Bunkhouse

<http://archives.brandonu.ca/en/permalink/descriptions9942>

Part Of: RG 11 Lawrence Stuckey fonds

Creator: George H. Harris

Description Level: Item

Series Number: 3.1

Item Number: 1-2002.3.1P19

Accession Number: 1-2002

GMD: graphic

Date Range: 1940

Physical Description: 1 3/4" x 2 1/2"

Material Details: Negative

Custodial History:

For custodial history see the collection level description of the Lawrence Stuckey collection.

Scope and Content:

CPR shop buildings, water tower, and Winnipeg bunkhouse.

Notes: From the collection of George H. Harris, Winnipeg, Manitoba.

Name Access: CPR Engine Terminal

Subject Access: railroads

railways

Canadian Pacific Railway in Brandon

Repro Restriction: The McKee Archives is the copyright holder for the Stuckey materials.

Location Copy: 1-2002.3.9.95

Storage Location: Lawrence Stuckey collection

### Images

---



## CPR Ice House Fire

<http://archives.brandonu.ca/en/permalink/descriptions9613>

Part Of: RG 11 Lawrence Stuckey fonds

Creator: George H. Harris

Description Level: Item

Series Number: 3.1

Item Number: 1-2002.3.1FA4

Accession Number: 1-2002  
GMD: graphic  
Date Range: May 19, 1951  
Physical Description: 3 1/2" x 5"  
Material Details: Negative  
Custodial History:

For custodial history see the collection level description of the Lawrence Stuckey collection.

Scope and Content:

CPR Ice House Fire with engine 701

Notes: This large ice house, located between the CPR tracks and Assiniboine Avenue at 3rd Street, was filled with blocks of ice from the Assiniboine River each winter. It had a long high platform for [loading ice blocks into] refrigerator cars, and also handled charcoal braziers for heating these same cars in winter. The new ice house structure that was built after this fire was much smaller, as it had an artificial ice plant.

With mechanically temperature-controlled cars replacing ice-cooled refrigerators, it was demolished in the 1970's.

This photograph shows how steam switch engines were used as fire engines. A hose carried in a box under the tender was fitted into a branch of the boiler feed pipe (discharge pipe). When the injector was turned on it gave a nozzle pressure of over 200 psi.

Name Access: CPR Ice House Fire  
Subject Access: fires  
railways  
Canadian Pacific Railway  
Brandon Fires

Repro Restriction: The McKee Archives is the copyright holder for the Stuckey materials.  
Storage Location: Lawrence Stuckey collection

## Images

---



## Alcoholism Foundation of Manitoba, Parkwood Treatment Centre

<http://archives.brandonu.ca/en/permalink/descriptions9307>

Part Of: RG 11 Lawrence Stuckey fonds  
Creator: L.A. Stuckey



Description Level: Item  
Series Number: 3.1  
Item Number: 1-2002.3.1D18(1)  
Accession Number: 1-2002  
GMD: graphic  
Date Range: March 22, 1992  
Physical Description: 2 1/2" x 2 1/2"  
Material Details: Negative

History /

Biographical:

Built in 1991-1992 for \$1.4 million, the official opening of the Centre was May 29, 1992. The centre is currently (April 2010) called the Addictions Foundation of Manitoba, Parkwood Centre.

Custodial History:

For custodial history see the collection level description of the Lawrence Stuckey collection.

Scope and Content:

Alcoholism Foundation of Manitoba (AFM), Parkwood Treatment Centre located on Victoria Avenue East.

Name Access: Alcoholism Foundation of Manitoba  
Parkwood Treatment Centre

Subject Access: Alcoholism  
Health Services  
Treatment Centres  
Brandon Public Buildings

Repro Restriction: The McKee Archives is the copyright holder for the Stuckey materials.

Storage Location: Lawrence Stuckey collection

Arrangement:

[Mr. Stuckey put 2 negatives in the same envelope. We have separated them and numbered them D18(1) and D18(2).]

## Images

---



## Alcoholism Foundation of Manitoba Parkwood Treatment



## Centre

<http://archives.brandonu.ca/en/permalink/descriptions9308>

Part Of: RG 11 Lawrence Stuckey fonds

Creator: L.A. Stuckey

Description Level: Item

Series Number: 3.1

Item Number: 1-2002.3.1D18(2)

Accession Number: 1-2002

GMD: graphic

Date Range: March 22, 1992

Physical Description: 2 1/2" x 2 1/2"

Material Details: Negative

History /

Biographical:

Built in 1991-1992 for \$1.4 million, the official opening of the Centre was May 29, 1992. The centre is currently (April 2010) called the Addictions Foundation of Manitoba, Parkwood Centre.

Custodial History:

For custodial history see the collection level description of the Lawrence Stuckey collection.

Scope and Content:

Alcoholism Foundation of Manitoba (AFM), Parkwood Treatment Centre.

Name Access: Alcoholism Foundation of Manitoba

Parkwood Treatment Centre

Subject Access: Alcoholism

Health Services

Treatment Centres

Brandon Public Buildings

Repro Restriction: The McKee Archives is the copyright holder for the Stuckey materials.

Storage Location: Lawrence Stuckey collection

Arrangement:

[Mr. Stuckey put 2 negatives in the same envelope. We have separated them and numbered them D18(1) and D18(2).]

## Images

---







## CNR Engine Terminal

<http://archives.brandonu.ca/en/permalink/descriptions9963>

Part Of: RG 11 Lawrence Stuckey fonds

Creator: George H. Harris

Description Level: Item

Series Number: 3.1

Item Number: 1-2002.3.1PC2

Accession Number: 1-2002

GMD: graphic

Date Range: 1937

Physical Description: 3 1/2" x 5"

Material Details: Negative

Custodial History:

For custodial history see the collection level description of the Lawrence Stuckey collection.

Scope and Content:

Canadian National Railways engine terminal, Brandon.

Notes: Engines left to right: 1345, 1267, 2728, 2637, 1392, 2407

Copy negative

[Located just west of First Street; Looking west. P.E. 28/07/09]

Name Access: CNR Engine Terminal

Subject Access: railroads

railways

locomotives

Canadian National Railways in Brandon - Early

Repro Restriction: The McKee Archives is the copyright holder for the Stuckey materials.

Storage Location: Lawrence Stuckey collection

### Images

---





## CNR Engine Terminal

<http://archives.brandonu.ca/en/permalink/descriptions9964>

Part Of: RG 11 Lawrence Stuckey fonds

Creator: George H. Harris

Description Level: Item

Series Number: 3.1

Item Number: 1-2002.3.1PC3

Accession Number: 1-2002

GMD: graphic

Date Range: 1938

Physical Description: 3 1/2" x 5"

Material Details: Negative

Custodial History:

For custodial history see the collection level description of the Lawrence Stuckey collection.

Scope and Content:

Canadian National Railways engine terminal, Brandon.

Notes: Copy negative

From the collection of George H. Harris, Winnipeg, Manitoba

[Looking west towards First Street crossing. P.E. 28/07/09]

Name Access: CNR Engine Terminal

Subject Access: railroads

railways

locomotives

Canadian National Railways in Brandon - Early

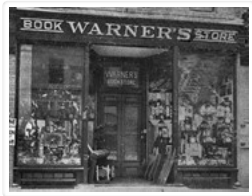
Repro Restriction: The McKee Archives is the copyright holder for the Stuckey materials.

Storage Location: Lawrence Stuckey collection

### Images

---





## Warner's Book Store

<http://archives.brandonu.ca/en/permalink/descriptions9489>

Part Of: RG 11 Lawrence Stuckey fonds

Creator: George H. Harris

Description Level: Item

Series Number: 3.1

Item Number: 1-2002.3.1E16

Accession Number: 1-2002

GMD: graphic

Date Range: [ca. 1904]

Physical Description: 3 1/2" x 5"

Material Details: Negative

Custodial History:

For custodial history see the collection level description of the Lawrence Stuckey collection.

Scope and Content:

Warner's Book Store

Notes: Located in Syndicate Block

Name Access: Warner's Book Store

Subject Access: businesses

bookselling

booksellers

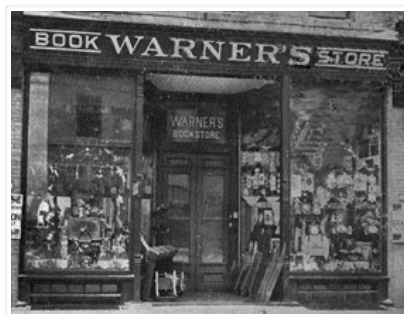
Brandon business buildings & facilities before 1940

Repro Restriction: The McKee Archives is the copyright holder for the Stuckey materials.

Storage Location: Lawrence Stuckey collection

### Images

---





## CPR Engine 144 with Miniota Passenger Train

<http://archives.brandonu.ca/en/permalink/descriptions9960>

Part Of: RG 11 Lawrence Stuckey fonds

Creator: George H. Harris

Description Level: Item

Series Number: 3.1

Item Number: 1-2002.3.1P34

Accession Number: 1-2002

GMD: graphic

Date Range: 1927

Physical Description: 2" x 3"

Material Details: Negative

Custodial History:

For custodial history see the collection level description of the Lawrence Stuckey collection.

Scope and Content:

Miniota passenger train engine 144, a 4-4-0 ["American" type], in Brandon

Notes: Small original negative

From the collection of George H. Harris, Winnipeg, Manitoba.

Name Access: CPR Engines

Subject Access: railroads

railways

locomotives

passenger trains

Canadian Pacific Railway in Brandon

Repro Restriction: The McKee Archives is the copyright holder for the Stuckey materials.

Location Copy: 1-2002.3.9.93

Storage Location: Lawrence Stuckey collection

### Images

---





## Brandon Machine Works

<http://archives.brandonu.ca/en/permalink/descriptions9488>

Part Of: RG 11 Lawrence Stuckey fonds

Creator: George H. Harris

Description Level: Item

Series Number: 3.1

Item Number: 1-2002.3.1E15

Accession Number: 1-2002

GMD: graphic

Date Range: 1939

Physical Description: 3 1/2" x 5"

Material Details: Negative

Custodial History:

For custodial history see the collection level description of the Lawrence Stuckey collection.

Scope and Content:

Brandon Machine Works

Notes: This photo was taken entirely by moonlight

Copy negative

Name Access: Brandon Machine Works

Subject Access: businesses

factories

metal fabrication

Brandon business buildings & facilities before 1940

Repro Restriction: The McKee Archives is the copyright holder for the Stuckey materials.

Storage Location: Lawrence Stuckey collection

### Images

---





## CPR Station and Coach Yard - Showing Heating Plant

<http://archives.brandonu.ca/en/permalink/descriptions9937>

Part Of: RG 11 Lawrence Stuckey fonds

Creator: George H. Harris

Description Level: Item

Series Number: 3.1

Item Number: 1-2002.3.1P14

Accession Number: 1-2002

GMD: graphic

Date Range: March 1920

Physical Description: 2 1/2" x 3 1/2"

Material Details: Negative

Custodial History:

For custodial history see the collection level description of the Lawrence Stuckey collection.

Scope and Content:

Canadian Pacific Railway Station and coach yard, showing [steam] heating plant

Notes: An original but rather poor negative (LAS)

[From the] collection of George H. Harris, Winnipeg, Man.

Name Access: CPR Station

Subject Access: railroads

railways

railway stations

passenger trains

Canadian Pacific Railway in Brandon

Repro Restriction: The McKee Archives is the copyright holder for the Stuckey materials.

Location Copy: 1-2002.3.9.158

Storage Location: Lawrence Stuckey collection

### Images

---





## CPR Station with Train No. 8

<http://archives.brandonu.ca/en/permalink/descriptions9938>

Part Of: RG 11 Lawrence Stuckey fonds

Creator: George H. Harris

Description Level: Item

Series Number: 3.1

Item Number: 1-2002.3.1P15

Accession Number: 1-2002

GMD: graphic

Date Range: 1937

Physical Description: 3 1/2" x 5"

Material Details: Negative

Custodial History:

For custodial history see the collection level description of the Lawrence Stuckey collection.

Scope and Content:

Canadian Pacific Railway Station and passenger train No. 8, from overhead [Eighth Street] bridge

Notes: No. 8, which was then a summer-only [passenger] train, is arriving with an H-1 class engine (No's. 2800-2819)

Copy negative LAS

Image was published in an article by Fred McGuinness

From the collection of George H. Harris, Winnipeg, Manitoba.

Name Access: CPR Station

Subject Access: railroads

railways

railway stations

passenger trains

Canadian Pacific Railway in Brandon

Repro Restriction: The McKee Archives is the copyright holder for the Stuckey materials.

Location Copy: 1-2002.3.9.159

Storage Location: Lawrence Stuckey collection

### Images

---

