

S. J. McKee Archives



Grand Trunk Pacific Bridge Piers

<http://archives.brandonu.ca/en/permalink/descriptions9923>

Part Of: RG 11 Lawrence Stuckey fonds

Creator: George H. Harris

Description Level: Item

Series Number: 3.1

Item Number: 1-2002.3.1OB7

Accession Number: 1-2002

GMD: graphic

Date Range: June 1940

Physical Description: 2 1/2" x 4"

Material Details: Negative

Custodial History:

For custodial history see the collection level description of the Lawrence Stuckey collection.

Scope and Content:

Grand Trunk Pacific bridge piers

Notes: Shows centre pier

[Notes on negative read "Near Brandon; Never Used; Dated 1913"]

Name Access: Grand Trunk Pacific Bridge Piers

Subject Access: manmade geographic features

bridges

Brandon Area Bridges

Repro Restriction: The McKee Archives is the copyright holder for the Stuckey materials.

Storage Location: Lawrence Stuckey collection

Images





CNR Station at Prince Edward Hotel

<http://archives.brandonu.ca/en/permalink/descriptions9965>

Part Of: RG 11 Lawrence Stuckey fonds

Creator: George H. Harris

Description Level: Item

Series Number: 3.1

Item Number: 1-2002.3.1PC4

Accession Number: 1-2002

GMD: graphic

Date Range: June 1940

Physical Description: 3 1/2" x 5"

Material Details: Negative

Custodial History:

For custodial history see the collection level description of the Lawrence Stuckey collection.

Scope and Content:

[East side of Prince Edward Hotel railway station; facing Ninth Street]

Notes: Copy LAS.

Name Access: Prince Edward Hotel

CNR Station

Subject Access: railway stations

hotels

Brandon hotels

Canadian National Railways in Brandon - Early

Repro Restriction: The McKee Archives is the copyright holder for the Stuckey materials.

Storage Location: Lawrence Stuckey collection

Images





Keystone Centre

<http://archives.brandonu.ca/en/permalink/descriptions9304>

Part Of: RG 11 Lawrence Stuckey fonds

Creator: L.A. Stuckey

Description Level: Item

Series Number: 3.1

Item Number: 1-2002.3.1D15

Accession Number: 1-2002

GMD: graphic

Date Range: August 1, 1979

Physical Description: 2 1/2" x 2 1/2"

Material Details: Negative

History /

Biographical:

[The main arena, previously known as the Keystone Arena, has been renamed Westman Communications Group Place. P.E. 05/06/09]

Custodial History:

For custodial history see the collection level description of the Lawrence Stuckey collection.

Scope and Content:

Keystone Centre

Name Access: Keystone Centre

Westman Communications Group Place

Subject Access: Arenas

Brandon Public Buildings

Repro Restriction: The McKee Archives is the copyright holder for the Stuckey materials.

Storage Location: Lawrence Stuckey collection

Images





Prince Edward Hotel - Railway Station

<http://archives.brandonu.ca/en/permalink/descriptions9419>

Part Of: RG 11 Lawrence Stuckey fonds

Creator: George H. Harris

Description Level: Item

Series Number: 3.1

Item Number: 1-2002.3.1DC6f(2)

Accession Number: 1-2002

GMD: graphic

Date Range: June 1940

Physical Description: 3 1/2" x 5"

Material Details: Negative

Custodial History:

For custodial history see the collection level description of the Lawrence Stuckey collection.

Scope and Content:

[East side of Prince Edward Hotel railway station; facing Ninth Street]

Notes: [Mr. Stuckey put six negatives (3 combined negatives) in one envelope. We have separated them and numbered them DC6f(1) through DC6f(6). From a combined negative.]

Name Access: Prince Edward Hotel
Canadian Northern Railway
Canadian National Railway

Subject Access: railway stations
hotels
Brandon hotels

Repro Restriction: The McKee Archives is the copyright holder for the Stuckey materials.

Storage Location: Lawrence Stuckey collection

Images





Wheat City Arena

<http://archives.brandonu.ca/en/permalink/descriptions9306>

Part Of: RG 11 Lawrence Stuckey fonds

Creator: George H. Harris

Description Level: Item

Series Number: 3.1

Item Number: 1-2002.3.1D17

Accession Number: 1-2002

GMD: graphic

Date Range: 1938

Physical Description: 2 1/2" x 4 1/2"

Material Details: Negative

History /

Biographical:

Razed January 1970.

Custodial History:

For custodial history see the collection level description of the Lawrence Stuckey collection.

Scope and Content:

Wheat City Arena (Winter Fair Building)

Notes:

Southeast corner of 11th Street & Victoria Ave.

From the collection of George H. Harris, Winnipeg, Man.

Creator provided by the Fred McGuinness collection (20-2009).

Name Access:

Wheat City Arena

Royal Manitoba Winter Fair

Subject Access:

Arenas

exhibitions

fairs

Brandon Public Buildings

Repro Restriction:

The McKee Archives is the copyright holder for the Stuckey materials.

Storage Location:

Lawrence Stuckey collection

Images





Dismantling of Streetcar No. 8

<http://archives.brandonu.ca/en/permalink/descriptions9731>

Part Of: RG 11 Lawrence Stuckey fonds

Creator: George H. Harris

Description Level: Item

Series Number: 3.1

Item Number: 1-2002.3.118

Accession Number: 1-2002

GMD: graphic

Date Range: October 1937

Physical Description: 2 1/2" x 3 1/2"

Material Details: Negative

Custodial History:

For custodial history see the collection level description of the Lawrence Stuckey collection.

Scope and Content:

Dismantling of Streetcar No. 8

Notes: Photo was taken outside the car barn, located at the corner of First Street and College Avenue

Name Access: Brandon Municipal Railway

Subject Access: public transit

streetcars

Brandon Street Railway

Repro Restriction: The McKee Archives is the copyright holder for the Stuckey materials.

Storage Location: Lawrence Stuckey collection

Images





Streetcar Bodies in Tourist Park

<http://archives.brandonu.ca/en/permalink/descriptions9732>

Part Of: RG 11 Lawrence Stuckey fonds

Creator: George H. Harris

Description Level: Item

Series Number: 3.1

Item Number: 1-2002.3.119

Accession Number: 1-2002

GMD: graphic

Date Range: 1937

Physical Description: 2 1/2" x 3 1/2"

Material Details: Negative

History /

Biographical:

Due to the increasing volume of long-distance auto traffic in the 1920's, the city designated the block between Hill & Queen's Avenues and 9th & 10th streets as a "Tourist Camp" with a few basic facilities. After the demise of the Brandon Municipal Railway, several of the old car bodies were placed in the Tourist Camp to be used as cooking & eating shelters. Some may have had sleeping accommodations. Later (ca. 1938?) several were placed in a row along the south side of Victoria Avenue, approximately 28th or 29th St, and were used as the city's first drive-in hamburger place, "The Train Drive-in". This, I believe, only lasted one or two summer seasons. LAS.

Custodial History:

For custodial history see the collection level description of the Lawrence Stuckey collection.

Scope and Content:

Streetcar Bodies in Tourist Park

Name Access: Brandon Municipal Railway

Subject Access: public transit

streetcars

Brandon Street Railway

Repro Restriction: The McKee Archives is the copyright holder for the Stuckey materials.

Storage Location: Lawrence Stuckey collection

Images





CPR Shop Buildings, Water Tower, and Bunkhouse

<http://archives.brandonu.ca/en/permalink/descriptions9942>

Part Of: RG 11 Lawrence Stuckey fonds

Creator: George H. Harris

Description Level: Item

Series Number: 3.1

Item Number: 1-2002.3.1P19

Accession Number: 1-2002

GMD: graphic

Date Range: 1940

Physical Description: 1 3/4" x 2 1/2"

Material Details: Negative

Custodial History:

For custodial history see the collection level description of the Lawrence Stuckey collection.

Scope and Content:

CPR shop buildings, water tower, and Winnipeg bunkhouse.

Notes: From the collection of George H. Harris, Winnipeg, Manitoba.

Name Access: CPR Engine Terminal

Subject Access: railroads

railways

Canadian Pacific Railway in Brandon

Repro Restriction: The McKee Archives is the copyright holder for the Stuckey materials.

Location Copy: 1-2002.3.9.95

Storage Location: Lawrence Stuckey collection

Images



CPR Ice House Fire

<http://archives.brandonu.ca/en/permalink/descriptions9613>

Part Of: RG 11 Lawrence Stuckey fonds

Creator: George H. Harris

Description Level: Item

Series Number: 3.1

Item Number: 1-2002.3.1FA4

Accession Number: 1-2002
GMD: graphic
Date Range: May 19, 1951
Physical Description: 3 1/2" x 5"
Material Details: Negative
Custodial History:

For custodial history see the collection level description of the Lawrence Stuckey collection.

Scope and Content:

CPR Ice House Fire with engine 701

Notes: This large ice house, located between the CPR tracks and Assiniboine Avenue at 3rd Street, was filled with blocks of ice from the Assiniboine River each winter. It had a long high platform for [loading ice blocks into] refrigerator cars, and also handled charcoal braziers for heating these same cars in winter. The new ice house structure that was built after this fire was much smaller, as it had an artificial ice plant.

With mechanically temperature-controlled cars replacing ice-cooled refrigerators, it was demolished in the 1970's.

This photograph shows how steam switch engines were used as fire engines. A hose carried in a box under the tender was fitted into a branch of the boiler feed pipe (discharge pipe). When the injector was turned on it gave a nozzle pressure of over 200 psi.

Name Access: CPR Ice House Fire
Subject Access: fires
railways
Canadian Pacific Railway
Brandon Fires

Repro Restriction: The McKee Archives is the copyright holder for the Stuckey materials.
Storage Location: Lawrence Stuckey collection

Images





Assiniboine River Bridge North of Kemnay

<http://archives.brandonu.ca/en/permalink/descriptions9920>

Part Of: RG 11 Lawrence Stuckey fonds

Creator: George H. Harris

Description Level: Item

Series Number: 3.1

Item Number: 1-2002.3.1OB5(1)

Accession Number: 1-2002

GMD: graphic

Date Range: [ca. 1938]

Physical Description: 2 1/2" x 2 1/2"

Material Details: Negative

History /

Biographical:

This bridge was condemned in the late 1930s but cyclists continued to use it until it was torn down (approximately 1940)

Until the early 1920s the Canadian Pacific Railway maintained a well and pumping station near the southeast corner of this bridge, which pumped water through a pipeline to a locomotive watering tank at Kemnay.

Custodial History:

For custodial history see the collection level description of the Lawrence Stuckey collection.

Scope and Content:

Assiniboine River Bridge North of Kemnay

Notes: [Mr. Stuckey put a negative and print in the same envelope. We have separated them, numbering the negative OB5(1) and the print OB5(1a).]

Name Access: Assiniboine River Bridge North of Kemnay

Subject Access: manmade geographic features

bridges

Brandon Area Bridges

Repro Restriction: The McKee Archives is the copyright holder for the Stuckey materials.

Storage Location: Lawrence Stuckey collection

Images





Assiniboine River Bridge North of Kemnay

<http://archives.brandonu.ca/en/permalink/descriptions9921>

Part Of: RG 11 Lawrence Stuckey fonds

Creator: George H. Harris

Description Level: Item

Series Number: 3.1

Item Number: 1-2002.3.1OB5(1a)

Accession Number: 1-2002

GMD: graphic

Date Range: [ca. 1938]

Physical Description: 2 1/2" x 2 1/2"

Material Details: Photograph

History /

Biographical:

This bridge was condemned in the late 1930s but cyclists continued to use it until it was torn down (approximately 1940)

Until the early 1920s the Canadian Pacific Railway maintained a well and pumping station near the southeast corner of this bridge, which pumped water through a pipeline to a locomotive watering tank at Kemnay.

Custodial History:

For custodial history see the collection level description of the Lawrence Stuckey collection.

Scope and Content:

Assiniboine River Bridge North of Kemnay

Notes: [Mr. Stuckey put a negative and print in the same envelope. We have separated them, numbering the negative OB5(1) and the print OB5(1a).]

Name Access: Assiniboine River Bridge North of Kemnay

Subject Access: manmade geographic features

bridges

Brandon Area Bridges

Repro Restriction: The McKee Archives is the copyright holder for the Stuckey materials.

Storage Location: Lawrence Stuckey collection

Images





CNR Engine Terminal

<http://archives.brandonu.ca/en/permalink/descriptions9963>

Part Of: RG 11 Lawrence Stuckey fonds

Creator: George H. Harris

Description Level: Item

Series Number: 3.1

Item Number: 1-2002.3.1PC2

Accession Number: 1-2002

GMD: graphic

Date Range: 1937

Physical Description: 3 1/2" x 5"

Material Details: Negative

Custodial History:

For custodial history see the collection level description of the Lawrence Stuckey collection.

Scope and Content:

Canadian National Railways engine terminal, Brandon.

Notes: Engines left to right: 1345, 1267, 2728, 2637, 1392, 2407

Copy negative

[Located just west of First Street; Looking west. P.E. 28/07/09]

Name Access: CNR Engine Terminal

Subject Access: railroads

railways

locomotives

Canadian National Railways in Brandon - Early

Repro Restriction: The McKee Archives is the copyright holder for the Stuckey materials.

Storage Location: Lawrence Stuckey collection

Images





CNR Engine Terminal

<http://archives.brandonu.ca/en/permalink/descriptions9964>

Part Of: RG 11 Lawrence Stuckey fonds

Creator: George H. Harris

Description Level: Item

Series Number: 3.1

Item Number: 1-2002.3.1PC3

Accession Number: 1-2002

GMD: graphic

Date Range: 1938

Physical Description: 3 1/2" x 5"

Material Details: Negative

Custodial History:

For custodial history see the collection level description of the Lawrence Stuckey collection.

Scope and Content:

Canadian National Railways engine terminal, Brandon.

Notes: Copy negative

From the collection of George H. Harris, Winnipeg, Manitoba

[Looking west towards First Street crossing. P.E. 28/07/09]

Name Access: CNR Engine Terminal

Subject Access: railroads

railways

locomotives

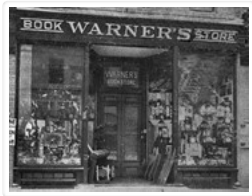
Canadian National Railways in Brandon - Early

Repro Restriction: The McKee Archives is the copyright holder for the Stuckey materials.

Storage Location: Lawrence Stuckey collection

Images





Warner's Book Store

<http://archives.brandonu.ca/en/permalink/descriptions9489>

Part Of: RG 11 Lawrence Stuckey fonds

Creator: George H. Harris

Description Level: Item

Series Number: 3.1

Item Number: 1-2002.3.1E16

Accession Number: 1-2002

GMD: graphic

Date Range: [ca. 1904]

Physical Description: 3 1/2" x 5"

Material Details: Negative

Custodial History:

For custodial history see the collection level description of the Lawrence Stuckey collection.

Scope and Content:

Warner's Book Store

Notes: Located in Syndicate Block

Name Access: Warner's Book Store

Subject Access: businesses

bookselling

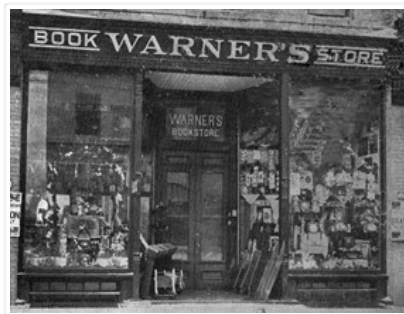
booksellers

Brandon business buildings & facilities before 1940

Repro Restriction: The McKee Archives is the copyright holder for the Stuckey materials.

Storage Location: Lawrence Stuckey collection

Images





CPR Engine 144 with Miniota Passenger Train

<http://archives.brandonu.ca/en/permalink/descriptions9960>

Part Of: RG 11 Lawrence Stuckey fonds

Creator: George H. Harris

Description Level: Item

Series Number: 3.1

Item Number: 1-2002.3.1P34

Accession Number: 1-2002

GMD: graphic

Date Range: 1927

Physical Description: 2" x 3"

Material Details: Negative

Custodial History:

For custodial history see the collection level description of the Lawrence Stuckey collection.

Scope and Content:

Miniota passenger train engine 144, a 4-4-0 ["American" type], in Brandon

Notes: Small original negative

From the collection of George H. Harris, Winnipeg, Manitoba.

Name Access: CPR Engines

Subject Access: railroads

railways

locomotives

passenger trains

Canadian Pacific Railway in Brandon

Repro Restriction: The McKee Archives is the copyright holder for the Stuckey materials.

Location Copy: 1-2002.3.9.93

Storage Location: Lawrence Stuckey collection

Images





Brandon Machine Works

<http://archives.brandonu.ca/en/permalink/descriptions9488>

Part Of: RG 11 Lawrence Stuckey fonds

Creator: George H. Harris

Description Level: Item

Series Number: 3.1

Item Number: 1-2002.3.1E15

Accession Number: 1-2002

GMD: graphic

Date Range: 1939

Physical Description: 3 1/2" x 5"

Material Details: Negative

Custodial History:

For custodial history see the collection level description of the Lawrence Stuckey collection.

Scope and Content:

Brandon Machine Works

Notes: This photo was taken entirely by moonlight

Copy negative

Name Access: Brandon Machine Works

Subject Access: businesses

factories

metal fabrication

Brandon business buildings & facilities before 1940

Repro Restriction: The McKee Archives is the copyright holder for the Stuckey materials.

Storage Location: Lawrence Stuckey collection

Images





CPR Station and Coach Yard - Showing Heating Plant

<http://archives.brandonu.ca/en/permalink/descriptions9937>

Part Of: RG 11 Lawrence Stuckey fonds

Creator: George H. Harris

Description Level: Item

Series Number: 3.1

Item Number: 1-2002.3.1P14

Accession Number: 1-2002

GMD: graphic

Date Range: March 1920

Physical Description: 2 1/2" x 3 1/2"

Material Details: Negative

Custodial History:

For custodial history see the collection level description of the Lawrence Stuckey collection.

Scope and Content:

Canadian Pacific Railway Station and coach yard, showing [steam] heating plant

Notes: An original but rather poor negative (LAS)

[From the] collection of George H. Harris, Winnipeg, Man.

Name Access: CPR Station

Subject Access: railroads

railways

railway stations

passenger trains

Canadian Pacific Railway in Brandon

Repro Restriction: The McKee Archives is the copyright holder for the Stuckey materials.

Location Copy: 1-2002.3.9.158

Storage Location: Lawrence Stuckey collection

Images





CPR Station with Train No. 8

<http://archives.brandonu.ca/en/permalink/descriptions9938>

Part Of: RG 11 Lawrence Stuckey fonds

Creator: George H. Harris

Description Level: Item

Series Number: 3.1

Item Number: 1-2002.3.1P15

Accession Number: 1-2002

GMD: graphic

Date Range: 1937

Physical Description: 3 1/2" x 5"

Material Details: Negative

Custodial History:

For custodial history see the collection level description of the Lawrence Stuckey collection.

Scope and Content:

Canadian Pacific Railway Station and passenger train No. 8, from overhead [Eighth Street] bridge

Notes: No. 8, which was then a summer-only [passenger] train, is arriving with an H-1 class engine (No's. 2800-2819)

Copy negative LAS

Image was published in an article by Fred McGuinness

From the collection of George H. Harris, Winnipeg, Manitoba.

Name Access: CPR Station

Subject Access: railroads

railways

railway stations

passenger trains

Canadian Pacific Railway in Brandon

Repro Restriction: The McKee Archives is the copyright holder for the Stuckey materials.

Location Copy: 1-2002.3.9.159

Storage Location: Lawrence Stuckey collection

Images





CPR Yards - from Coal Dock

<http://archives.brandonu.ca/en/permalink/descriptions9939>

Part Of: RG 11 Lawrence Stuckey fonds

Creator: George H. Harris

Description Level: Item

Series Number: 3.1

Item Number: 1-2002.3.1P16

Accession Number: 1-2002

GMD: graphic

Date Range: September 1938

Physical Description: 3 1/2" x 5"

Material Details: Negative

Custodial History:

For custodial history see the collection level description of the Lawrence Stuckey collection.

Scope and Content:

Canadian Pacific Railway yards, looking west from coal dock

Notes: [Eastbound passenger train] No. 54, a Moose Jaw - Winnipeg local, is leaving (just east of 1st St. Bridge)

Original negative

From the collection of George H. Harris, Winnipeg, Man.

Name Access: CPR Yards

Subject Access: railroads

railways

freight trains

passenger trains

locomotives

caboose

Canadian Pacific Railway in Brandon

Repro Restriction: The McKee Archives is the copyright holder for the Stuckey materials.

Location Copy: 1-2002.3.9.160

Storage Location: Lawrence Stuckey collection

Images



Great Northern wedge snowplow at Minot, ND



<http://archives.brandonu.ca/en/permalink/descriptions10004>

Part Of: RG 11 Lawrence Stuckey fonds
Creator: George H. Harris
Description Level: Item
Series Number: 3.1
Item Number: 1-2002.3.1PE27
Accession Number: 1-2002
GMD: graphic
Date Range: July 1938
Physical Description: 2" x 2 3/4"
Material Details: Negative

History /

Biographical:

According to Stuckey and Bain (1996), "The Brandon, Saskatchewan & Hudson's Bay Railway was built and operated as a totally owned subsidiary of the Great Northern Railway. Construction commenced in late 1905 and by the end of 1905, less than a mile of track had been laid north of the boundary at St. John. In 1906, the remaining 68.6 miles to Brandon were laid and service commenced that year. During the Depression of the 1930s, traffic declined significantly and the entire branch was abandoned in 1936. Over much of the branch's length, the ties and rails were laid on the prairie without ballast and today little remains of the line apart from traces where there were cuts and bridges." (p. 18)

Stuckey, L. A., & Bain, D. M. (1996). *The Great Northern and Northern Pacific railways in Canada*. Calgary, Alberta: British Railway Modellers of North America.

Custodial History:

For custodial history see the collection level description of the Lawrence Stuckey collection.

Scope and Content:

Great Northern wedge snowplow on ore gondola, Minot, ND.

Notes: From the collection of George H. Harris, Winnipeg, Manitoba.
Stuckey and Bain (1996, p. 21) note that "Built in the company shops, simply by adding a plow to an ore jenny which was filled with rocks, these vehicles were quite effective at removing snow from single tracks."

Name Access: Brandon, Saskatchewan & Hudson's Bay Railway
Great Northern Railway

Subject Access: railroads
railways
freight trains
Great Northern Railway from Church's Ferry ND to Brandon MB

Repro Restriction: The McKee Archives is the copyright holder for the Stuckey materials.

Storage Location: Lawrence Stuckey collection

Images

