

# S. J. McKee Archives



## North side of the A.E. McKenzie Building

<http://archives.brandonu.ca/en/permalink/descriptions770>

Part Of: Brandon University Photograph collection

Description Level: Item

Series Number: 2.4

Item Number: BUPC 2.4.3

GMD: graphic

Date Range: c. mid 1980s

Physical Description: 3.5" x 5" (colour)

### Scope and Content:

Photograph is looking southwest from in front of the Original Music Building and shows the north side of the A.E. McKenzie Building and the west side of the Queen Elizabeth II Music Building (including the link). A number of cars in the parking lot are also visible.

## Images





## East side of the A.E. McKenzie Building

<http://archives.brandonu.ca/en/permalink/descriptions861>

Part Of: Brandon University Photograph collection

Description Level: Item

Series Number: 2.4

Item Number: BUPC 2.4.1

GMD: graphic

Date Range: c .1985

Physical Description: 3.5" x 5" (colour)

### Scope and Content:

Photograph is looking west from the sidewalk between Clark Hall and the Education Building and shows the east side of the A.E. McKenzie Building as well as a trailer that housed the Canada Manpower office (career counselling) in the 1960s. The trailer was later moved near the Kinsmen Stadium where it housed the Quill office.

### Images

---





## Aerial view: Brandon College from 23rd Street

<http://archives.brandonu.ca/en/permalink/descriptions602>

Part Of: Brandon University Photograph collection

Description Level: Item

Series Number: 2.1

Item Number: BUPC 2.1.9

GMD: graphic

Date Range: [1963-1966]

Physical Description: 5" x 4" (b/w)

### Scope and Content:

Image is looking east northeast from approximately the 300 block of 23rd Street between Lorne and Louise Avenues. Photograph shows the Brandon College campus after the opening of the original Music Building in 1963, but before the construction of the Education Building in 1966. A number of house on the 300 blocks of 22nd and 21st Streets are visible in the foreground, with the A.E. McKenzie Seed Co., the Prince Edward Hotel and various grain elevators on the horizon.

Subject Access: aerial photographs  
campus photographs  
campus buildings  
Brandon streets  
Grain elevators

## Images

---





## House removal

<http://archives.brandonu.ca/en/permalink/descriptions7994>

Part Of: Brandon University Photograph collection

Description Level: Item

Series Number: 2.1

Item Number: BUPC 2.1.60

GMD: graphic

Date Range: c. 1985

Physical Description: 5" x 3.5" (colour)

Scope and Content:

Photograph shows the removal of one of the houses formerly located on 20th Street between Louise and Princess Avenues. The houses on those blocks were removed to create parking lots for the University. A Fed Zavislak Ltd. Well Drilling & Trucking pickup truck is visible at the curb.

Subject Access: campus photographs

Brandon streets

### Images

---





## House removal

<http://archives.brandonu.ca/en/permalink/descriptions7995>

Part Of: Brandon University Photograph collection

Description Level: Item

Series Number: 2.1

Item Number: BUPC 2.1.61

GMD: graphic

Date Range: c. 1985

Physical Description: 5" x 3.5" (colour)

Scope and Content:

Photograph shows the removal of one of the houses formerly located on 20th Street between Louise and Princess Avenues. The houses on those blocks were removed to create parking lots for the University.

Subject Access: campus photographs

Brandon streets

## Images

---





## Brandon University campus construction

<http://archives.brandonu.ca/en/permalink/descriptions8016>

Part Of: Brandon University Photograph collection

Creator: Photographer: Sandy Black

Description Level: Item

Series Number: 2.1

Item Number: BUPC 2.1.82

GMD: graphic

Date Range: c. 1996

Physical Description: 4" x 6" (colour)

Scope and Content:

View is northeast from the Brandon College Building. Photograph shows the inside of the Brandon College Building after it had been gutted and then partially rebuilt. The exterior facade of the west side of the building can be clearly seen in this photograph. A number of houses on the east side of 200 block of 18th Street are also visible, as is the stone fence on Princess Avenue and the flag pole on the front lawn.

Subject Access: campus photographs

campus construction

Brandon streets

### Images

---





## Aerial view - Brandon University campus

<http://archives.brandonu.ca/en/permalink/descriptions7989>

Part Of: Brandon University Photograph collection

Creator: Photograph commissioned by Brandon University and taken by Yourview Aerial Scenics Ltd.

Description Level: Item

Series Number: 2.1

Item Number: BUPC 2.1.55

GMD: graphic

Date Range: c. 2000

Physical Description: 6" x 4" (colour)

Scope and Content:

View is southwest from approximately 16th Street between Princess and Rosser Avenues. Photograph shows the Brandon University campus, as well as surrounding residential blocks, including Flemming, J.R. Reid and Vincent Massey schools.

Subject Access:

- aerial photographs
- campus photographs
- campus buildings
- Brandon streets

### Images

---





## Aerial view - Brandon University campus

<http://archives.brandonu.ca/en/permalink/descriptions7990>

Part Of: Brandon University Photograph collection  
Creator: Photograph commissioned by Brandon University and taken by Yourview Aerial Scenics Ltd.

Description Level: Item  
Series Number: 2.1  
Item Number: BUPC 2.1.56  
GMD: graphic  
Date Range: c. 2000  
Physical Description: 6" x 4" (colour)

### Scope and Content:

View is west southwest from approximately 16th Street between Princess and Lorne Avenues. Photograph shows the Brandon University campus, as well as surrounding residential blocks between 16th and 23rd Streets, Princess and Louise Avenues..

Subject Access: aerial photographs  
campus photographs  
campus buildings  
Brandon streets

## Images

---







## Aerial view - Brandon University campus

<http://archives.brandonu.ca/en/permalink/descriptions7991>

Part Of: Brandon University Photograph collection  
Creator: Photograph commissioned by Brandon University and taken by Yourview Aerial Scenics Ltd.

Description Level: Item  
Series Number: 2.1  
Item Number: BUPC 2.1.57  
GMD: graphic  
Date Range: c. 2000  
Physical Description: 6" x 4" (colour)

### Scope and Content:

View is west from approximately 17th Street between Lorne and Louise Avenues. Photograph shows a portion of the Brandon University campus (excluding the Education Building and anything north of it), as well as surrounding residential blocks from approximately 17th Street to 22nd Street.

Subject Access: aerial photographs  
campus photographs  
campus buildings  
Brandon streets

## Images

---





## Aerial view - Brandon University campus

<http://archives.brandonu.ca/en/permalink/descriptions7992>

Part Of: Brandon University Photograph collection

Description Level: Item

Series Number: 2.1

Item Number: BUPC 2.1.58

GMD: graphic

Date Range: c. 1990

Physical Description: 5" x 3.5" (colour)

### Scope and Content:

View is west northwest from approximately 16th Street and Louise Avenue. Photograph shows the Brandon University campus, prior to the Library Extension, and a large portion of the city to the west of the campus.

Subject Access: aerial photographs  
campus photographs  
campus buildings  
Brandon streets

## Images

---





## Aerial view - Brandon University campus

<http://archives.brandonu.ca/en/permalink/descriptions7993>

Part Of: Brandon University Photograph collection

Description Level: Item

Series Number: 2.1

Item Number: BUPC 2.1.59

GMD: graphic

Date Range: c. 1990

Physical Description: 5" x 3.5" (colour)

### Scope and Content:

View is northwest from approximately 16th Street and Louise Avenue. Photograph shows the Brandon University campus, prior to the Library Extension, and a large portion of the city to the west of the campus.

Subject Access:

- aerial photographs
- campus photographs
- campus buildings
- Brandon streets



## Brandon University campus construction

<http://archives.brandonu.ca/en/permalink/descriptions8005>

Part Of: Brandon University Photograph collection

Creator: Photographer: Sandy Black

Description Level: Item

Series Number: 2.1

Item Number: BUPC 2.1.71

GMD: graphic

Date Range: c. 1996

Physical Description: 4" x 6" (colour)

Scope and Content:

View is northeast probably from the roof of McMaster Hall. Photograph shows the construction of the new roof on Clark Hall and the Brandon College Building. A portion of the east side of the 000 and 100 blocks of 18th Street, as well as the corner of 18th Street and Rosser Avenue are visible in the upper left hand corner. This includes the "Downtown Brandon" sign.

Subject Access: campus photographs

campus buildings

campus construction

Brandon streets

### Images

---





## Brandon University campus construction

<http://archives.brandonu.ca/en/permalink/descriptions8006>

Part Of: Brandon University Photograph collection

Creator: Photographer: Sandy Black

Description Level: Item

Series Number: 2.1

Item Number: BUPC 2.1.72

GMD: graphic

Date Range: c. 1996

Physical Description: 6" x 4" (colour)

Scope and Content:

View is north northeast probably from the roof of McMaster Hall. Photograph shows the construction of the new roof on Clark Hall and the Brandon College Building, as well as the construction of the extension to Clark Hall and the skywalk. Portions of the city as far north as the Assiniboine River are also visible.

Subject Access: campus photographs

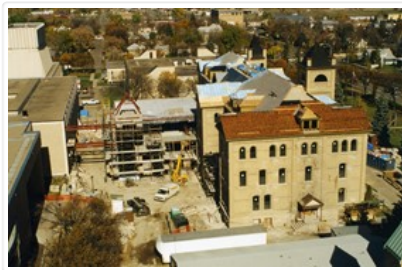
campus buildings

campus construction

Brandon streets

### Images

---





## Brandon University campus construction

<http://archives.brandonu.ca/en/permalink/descriptions8018>

Part Of: Brandon University Photograph collection

Description Level: Item

Series Number: 2.1

Item Number: BUPC 2.1.84

GMD: graphic

Date Range: c. 1996

Physical Description: 6" x 4" (colour)

### Scope and Content:

View is north northeast from the roof of McMaster Hall. Photograph shows the campus under construction during the renovation of the Brandon College Building and Clark Hall. The photograph was taken in late fall after the roof had been removed from the buildings but before the construction of the extension of Clark Hall. Construction materials litter the courtyard and driveway. The view looking north extends to The North Hill - a number of residential blocks, particularly to the northeast of 18th Street are visible. Buildings include the International Harvester Building and Kin Village.

Subject Access: campus photographs

campus buildings

campus construction

Brandon streets

### Images

---





## Brandon University campus construction

<http://archives.brandonu.ca/en/permalink/descriptions8020>

Part Of: Brandon University Photograph collection

Creator: Photographer: Sandy Black

Description Level: Item

Series Number: 2.1

Item Number: BUPC 2.1.86

GMD: graphic

Date Range: c. 1996

Physical Description: 6" x 4" (colour)

### Scope and Content:

View is north northeast probably from the roof of McMaster Hall. Photograph shows the construction of the new roof on Clark Hall and the Brandon College Building, as well as the construction of the extension to Clark Hall and the skywalk. The view looking north extends to The North Hill - a number of residential blocks, particularly to the northeast of 18th Street are visible. Buildings include the International Harvester Building and Kin Village.

Subject Access: campus photographs

campus buildings

campus construction

Brandon streets

## Images

---





## Aerial view: Brandon College

<http://archives.brandonu.ca/en/permalink/descriptions594>

Part Of: Brandon University Photograph collection

Description Level: Item

Series Number: 2.1

Item Number: BUPC 2.1.2

GMD: graphic

Date Range: [fall 1964?]

Physical Description: 5" x 4" (b/w)

Scope and Content:

Brandon College looking south from 19th Street. Photograph was taken after Flora Cowan Hall was built but before construction of the Education Building.

Subject Access: aerial photographs  
campus photographs  
campus buildings  
Brandon streets

## Images

---







## Aerial view - Brandon College looking southwest

<http://archives.brandonu.ca/en/permalink/descriptions601>

Part Of: Brandon University Photograph collection

Description Level: Item

Series Number: 2.1

Item Number: BUPC 2.1.8

GMD: graphic

Date Range: [1963-1966]

Physical Description: 5" x 4" (b/w)

### Scope and Content:

Image shows the Brandon College campus from 17th Street looking southwest. The photo was taken after the completion of the original Music Building in 1963, but construction of the Education Building. Also visible are a number of properties on the 200 block of 18th Street and the 200 block of 20th Street.

Subject Access: aerial photographs  
campus photographs  
campus buildings  
Brandon streets

## Images

---

