

# S. J. McKee Archives

---



## Brandon Allied Arts Centre

<http://archives.brandonu.ca/en/permalink/descriptions9298>

Part Of: RG 11 Lawrence Stuckey fonds

Creator: L.A. Stuckey

Description Level: Item

Series Number: 3.1

Item Number: 1-2002.3.1D11

Accession Number: 1-2002

GMD: graphic

Date Range: April 15, 1979

Physical Description: 2 1/2" x 2 1/2"

Material Details: Negative

### History /

#### Biographical:

Former home of J.E. Smith, early farmer, horse breeder and businessman - died 1919. Became city property. To Allied Arts Council 1950's. Arts Centre moved to former Co-op Store, 600 block of Princess Ave. 1984.

[In 2000, the renamed Art Gallery of Southwestern Manitoba moved to the former Eaton's building attached to The Town Centre (former Gallery Mall). P.E. 05/06/09]

#### Custodial History:

For custodial history see the collection level description of the Lawrence Stuckey collection.

#### Scope and Content:

Allied Arts Centre (detail) from 11th Street

Name Access: Brandon Allied Arts Centre

Subject Access: art galleries

Brandon Public Buildings

Repro Restriction: The McKee Archives is the copyright holder for the Stuckey materials.

Storage Location: Lawrence Stuckey collection

## Images

---





## CPR & City Centre from Brandon Brewery

<http://archives.brandonu.ca/en/permalink/descriptions9957>

Part Of: RG 11 Lawrence Stuckey fonds

Creator: George H. Harris

Description Level: Item

Series Number: 3.1

Item Number: 1-2002.3.1P31

Accession Number: 1-2002

GMD: graphic

Date Range: September 1937

Physical Description: 2 1/2" x 4 1/2"

Material Details: Negative

Custodial History:

For custodial history see the collection level description of the Lawrence Stuckey collection.

Scope and Content:

View of CPR's west yard & city centre from Brandon Brewery on Assiniboine Avenue.

Notes: Image shows CPR freight sheds & station, Great Northern station, and many core area buildings

Collection of George H. Harris, Winnipeg, Man.

Name Access: CPR Freight Train

CPR Freight Shed

Brandon Skyline

Subject Access: railroads

railways

railway stations

freight trains

industrial buildings

warehouses

Elevators

Canadian Pacific Railway in Brandon

Repro Restriction: The McKee Archives is the copyright holder for the Stuckey materials.

Location Copy: 1-2002.3.9.105

Storage Location: Lawrence Stuckey collection

### Images

---





## Wheat City Arena

<http://archives.brandonu.ca/en/permalink/descriptions9306>

Part Of: RG 11 Lawrence Stuckey fonds

Creator: George H. Harris

Description Level: Item

Series Number: 3.1

Item Number: 1-2002.3.1D17

Accession Number: 1-2002

GMD: graphic

Date Range: 1938

Physical Description: 2 1/2" x 4 1/2"

Material Details: Negative

### History /

#### Biographical:

Razed January 1970.

#### Custodial History:

For custodial history see the collection level description of the Lawrence Stuckey collection.

#### Scope and Content:

Wheat City Arena (Winter Fair Building)

#### Notes:

Southeast corner of 11th Street & Victoria Ave.

From the collection of George H. Harris, Winnipeg, Man.

Creator provided by the Fred McGuinness collection (20-2009).

#### Name Access:

Wheat City Arena

Royal Manitoba Winter Fair

#### Subject Access:

Arenas

exhibitions

fairs

Brandon Public Buildings

#### Repro Restriction:

The McKee Archives is the copyright holder for the Stuckey materials.

#### Storage Location:

Lawrence Stuckey collection

## Images

---





## Winter Fair Buildings and Streetcars

<http://archives.brandonu.ca/en/permalink/descriptions9305>

Part Of: RG 11 Lawrence Stuckey fonds

Description Level: Item

Series Number: 3.1

Item Number: 1-2002.3.1D16

Accession Number: 1-2002

GMD: graphic

Date Range: 1914

Physical Description: 2 1/2" x 3 1/2"

Material Details: Negative

Custodial History:

For custodial history see the collection level description of the Lawrence Stuckey collection.

Scope and Content:

City Market, Including Winter Fair Buildings and Streetcars

Notes: Located on the 500 block of 10th Street  
from Manitoba Archives

Name Access: Royal Manitoba Winter Fair  
City Market  
Brandon Municipal Railway

Subject Access: exhibitions  
fairs  
streetcars  
Arenas  
Brandon Public Buildings

Repro Restriction: The McKee Archives is the copyright holder for the Stuckey materials.

Storage Location: Lawrence Stuckey collection

### Images

---





## Brandon Machine Works

<http://archives.brandonu.ca/en/permalink/descriptions9488>

Part Of: RG 11 Lawrence Stuckey fonds

Creator: George H. Harris

Description Level: Item

Series Number: 3.1

Item Number: 1-2002.3.1E15

Accession Number: 1-2002

GMD: graphic

Date Range: 1939

Physical Description: 3 1/2" x 5"

Material Details: Negative

Custodial History:

For custodial history see the collection level description of the Lawrence Stuckey collection.

Scope and Content:

Brandon Machine Works

Notes: This photo was taken entirely by moonlight

Copy negative

Name Access: Brandon Machine Works

Subject Access: businesses

factories

metal fabrication

Brandon business buildings & facilities before 1940

Repro Restriction: The McKee Archives is the copyright holder for the Stuckey materials.

Storage Location: Lawrence Stuckey collection

### Images

---





## Dismantling of Streetcar No. 8

<http://archives.brandonu.ca/en/permalink/descriptions9731>

Part Of: RG 11 Lawrence Stuckey fonds

Creator: George H. Harris

Description Level: Item

Series Number: 3.1

Item Number: 1-2002.3.118

Accession Number: 1-2002

GMD: graphic

Date Range: October 1937

Physical Description: 2 1/2" x 3 1/2"

Material Details: Negative

Custodial History:

For custodial history see the collection level description of the Lawrence Stuckey collection.

Scope and Content:

Dismantling of Streetcar No. 8

Notes: Photo was taken outside the car barn, located at the corner of First Street and College Avenue

Name Access: Brandon Municipal Railway

Subject Access: public transit

streetcars

Brandon Street Railway

Repro Restriction: The McKee Archives is the copyright holder for the Stuckey materials.

Storage Location: Lawrence Stuckey collection

### Images

---





## Streetcar Bodies in Tourist Park

<http://archives.brandonu.ca/en/permalink/descriptions9732>

Part Of: RG 11 Lawrence Stuckey fonds  
Creator: George H. Harris  
Description Level: Item  
Series Number: 3.1  
Item Number: 1-2002.3.119  
Accession Number: 1-2002  
GMD: graphic  
Date Range: 1937  
Physical Description: 2 1/2" x 3 1/2"  
Material Details: Negative

### History /

#### Biographical:

Due to the increasing volume of long-distance auto traffic in the 1920's, the city designated the block between Hill & Queen's Avenues and 9th & 10th streets as a "Tourist Camp" with a few basic facilities. After the demise of the Brandon Municipal Railway, several of the old car bodies were placed in the Tourist Camp to be used as cooking & eating shelters. Some may have had sleeping accommodations. Later (ca. 1938?) several were placed in a row along the south side of Victoria Avenue, approximately 28th or 29th St, and were used as the city's first drive-in hamburger place, "The Train Drive-in". This, I believe, only lasted one or two summer seasons. LAS.

#### Custodial History:

For custodial history see the collection level description of the Lawrence Stuckey collection.

#### Scope and Content:

##### Streetcar Bodies in Tourist Park

Name Access: Brandon Municipal Railway  
Subject Access: public transit  
streetcars  
Brandon Street Railway

Repro Restriction: The McKee Archives is the copyright holder for the Stuckey materials.

Storage Location: Lawrence Stuckey collection

## Images

---







## Warner's Book Store

<http://archives.brandonu.ca/en/permalink/descriptions9489>

Part Of: RG 11 Lawrence Stuckey fonds

Creator: George H. Harris

Description Level: Item

Series Number: 3.1

Item Number: 1-2002.3.1E16

Accession Number: 1-2002

GMD: graphic

Date Range: [ca. 1904]

Physical Description: 3 1/2" x 5"

Material Details: Negative

Custodial History:

For custodial history see the collection level description of the Lawrence Stuckey collection.

Scope and Content:

Warner's Book Store

Notes: Located in Syndicate Block

Name Access: Warner's Book Store

Subject Access: businesses

bookselling

booksellers

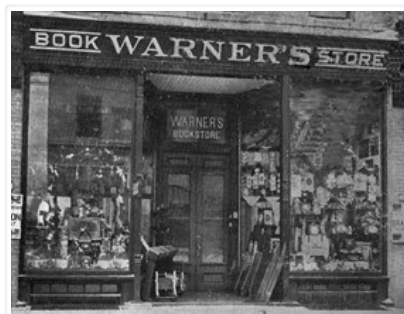
Brandon business buildings & facilities before 1940

Repro Restriction: The McKee Archives is the copyright holder for the Stuckey materials.

Storage Location: Lawrence Stuckey collection

### Images

---





## CNR Station at Prince Edward Hotel

<http://archives.brandonu.ca/en/permalink/descriptions9965>

Part Of: RG 11 Lawrence Stuckey fonds

Creator: George H. Harris

Description Level: Item

Series Number: 3.1

Item Number: 1-2002.3.1PC4

Accession Number: 1-2002

GMD: graphic

Date Range: June 1940

Physical Description: 3 1/2" x 5"

Material Details: Negative

Custodial History:

For custodial history see the collection level description of the Lawrence Stuckey collection.

Scope and Content:

[East side of Prince Edward Hotel railway station; facing Ninth Street]

Notes: Copy LAS.

Name Access: Prince Edward Hotel

CNR Station

Subject Access: railway stations

hotels

Brandon hotels

Canadian National Railways in Brandon - Early

Repro Restriction: The McKee Archives is the copyright holder for the Stuckey materials.

Storage Location: Lawrence Stuckey collection

### Images

---





## Prince Edward Hotel - Railway Station

<http://archives.brandonu.ca/en/permalink/descriptions9419>

Part Of: RG 11 Lawrence Stuckey fonds

Creator: George H. Harris

Description Level: Item

Series Number: 3.1

Item Number: 1-2002.3.1DC6f(2)

Accession Number: 1-2002

GMD: graphic

Date Range: June 1940

Physical Description: 3 1/2" x 5"

Material Details: Negative

Custodial History:

For custodial history see the collection level description of the Lawrence Stuckey collection.

Scope and Content:

[East side of Prince Edward Hotel railway station; facing Ninth Street]

Notes: [Mr. Stuckey put six negatives (3 combined negatives) in one envelope. We have separated them and numbered them DC6f(1) through DC6f(6). From a combined negative.]

Name Access: Prince Edward Hotel  
Canadian Northern Railway  
Canadian National Railway

Subject Access: railway stations  
hotels  
Brandon hotels

Repro Restriction: The McKee Archives is the copyright holder for the Stuckey materials.

Storage Location: Lawrence Stuckey collection

### Images

---





## Grand Valley School

<http://archives.brandonu.ca/en/permalink/descriptions9894>

Part Of: RG 11 Lawrence Stuckey fonds

Creator: George H. Harris

Description Level: Item

Series Number: 3.1

Item Number: 1-2002.3.1O2

Accession Number: 1-2002

GMD: graphic

Date Range: 1940

Physical Description: 3 1/2" x 5"

Material Details: Negative

History /

Biographical:

Destroyed by fire in 1958 or 1959.

Custodial History:

For custodial history see the collection level description of the Lawrence Stuckey collection.

Scope and Content:

Grand Valley School

Notes: Located two miles east of First Street on the southeast corner of intersection of [Provincial Road 457].

Name Access: Grand Valley School

Subject Access: schools  
elementary schools  
Brandon Environs

Repro Restriction: The McKee Archives is the copyright holder for the Stuckey materials.

Storage Location: Lawrence Stuckey collection

### Images

---





## CPR Shop Buildings, Water Tower, and Bunkhouse

<http://archives.brandonu.ca/en/permalink/descriptions9942>

Part Of: RG 11 Lawrence Stuckey fonds

Creator: George H. Harris

Description Level: Item

Series Number: 3.1

Item Number: 1-2002.3.1P19

Accession Number: 1-2002

GMD: graphic

Date Range: 1940

Physical Description: 1 3/4" x 2 1/2"

Material Details: Negative

Custodial History:

For custodial history see the collection level description of the Lawrence Stuckey collection.

Scope and Content:

CPR shop buildings, water tower, and Winnipeg bunkhouse.

Notes: From the collection of George H. Harris, Winnipeg, Manitoba.

Name Access: CPR Engine Terminal

Subject Access: railroads

railways

Canadian Pacific Railway in Brandon

Repro Restriction: The McKee Archives is the copyright holder for the Stuckey materials.

Location Copy: 1-2002.3.9.95

Storage Location: Lawrence Stuckey collection

### Images

---



## CPR Ice House Fire

<http://archives.brandonu.ca/en/permalink/descriptions9613>

Part Of: RG 11 Lawrence Stuckey fonds

Creator: George H. Harris

Description Level: Item

Series Number: 3.1

Item Number: 1-2002.3.1FA4

Accession Number: 1-2002  
GMD: graphic  
Date Range: May 19, 1951  
Physical Description: 3 1/2" x 5"  
Material Details: Negative  
Custodial History:

For custodial history see the collection level description of the Lawrence Stuckey collection.

Scope and Content:

CPR Ice House Fire with engine 701

Notes: This large ice house, located between the CPR tracks and Assiniboine Avenue at 3rd Street, was filled with blocks of ice from the Assiniboine River each winter. It had a long high platform for [loading ice blocks into] refrigerator cars, and also handled charcoal braziers for heating these same cars in winter. The new ice house structure that was built after this fire was much smaller, as it had an artificial ice plant.

With mechanically temperature-controlled cars replacing ice-cooled refrigerators, it was demolished in the 1970's.

This photograph shows how steam switch engines were used as fire engines. A hose carried in a box under the tender was fitted into a branch of the boiler feed pipe (discharge pipe). When the injector was turned on it gave a nozzle pressure of over 200 psi.

Name Access: CPR Ice House Fire  
Subject Access: fires  
railways  
Canadian Pacific Railway  
Brandon Fires

Repro Restriction: The McKee Archives is the copyright holder for the Stuckey materials.  
Storage Location: Lawrence Stuckey collection

## Images

---





## Assiniboine River Bridge North of Kemnay

<http://archives.brandonu.ca/en/permalink/descriptions9920>

Part Of: RG 11 Lawrence Stuckey fonds

Creator: George H. Harris

Description Level: Item

Series Number: 3.1

Item Number: 1-2002.3.1OB5(1)

Accession Number: 1-2002

GMD: graphic

Date Range: [ca. 1938]

Physical Description: 2 1/2" x 2 1/2"

Material Details: Negative

### History /

#### Biographical:

This bridge was condemned in the late 1930s but cyclists continued to use it until it was torn down (approximately 1940)

Until the early 1920s the Canadian Pacific Railway maintained a well and pumping station near the southeast corner of this bridge, which pumped water through a pipeline to a locomotive watering tank at Kemnay.

#### Custodial History:

For custodial history see the collection level description of the Lawrence Stuckey collection.

#### Scope and Content:

##### Assiniboine River Bridge North of Kemnay

Notes: [Mr. Stuckey put a negative and print in the same envelope. We have separated them, numbering the negative OB5(1) and the print OB5(1a).]

Name Access: Assiniboine River Bridge North of Kemnay

Subject Access: manmade geographic features

bridges

Brandon Area Bridges

Repro Restriction: The McKee Archives is the copyright holder for the Stuckey materials.

Storage Location: Lawrence Stuckey collection

## Images

---





## Assiniboine River Bridge North of Kemnay

<http://archives.brandonu.ca/en/permalink/descriptions9921>

Part Of: RG 11 Lawrence Stuckey fonds

Creator: George H. Harris

Description Level: Item

Series Number: 3.1

Item Number: 1-2002.3.1OB5(1a)

Accession Number: 1-2002

GMD: graphic

Date Range: [ca. 1938]

Physical Description: 2 1/2" x 2 1/2"

Material Details: Photograph

### History /

#### Biographical:

This bridge was condemned in the late 1930s but cyclists continued to use it until it was torn down (approximately 1940)

Until the early 1920s the Canadian Pacific Railway maintained a well and pumping station near the southeast corner of this bridge, which pumped water through a pipeline to a locomotive watering tank at Kemnay.

#### Custodial History:

For custodial history see the collection level description of the Lawrence Stuckey collection.

#### Scope and Content:

Assiniboine River Bridge North of Kemnay

Notes: [Mr. Stuckey put a negative and print in the same envelope. We have separated them, numbering the negative OB5(1) and the print OB5(1a).]

Name Access: Assiniboine River Bridge North of Kemnay

Subject Access: manmade geographic features

bridges

Brandon Area Bridges

Repro Restriction: The McKee Archives is the copyright holder for the Stuckey materials.

Storage Location: Lawrence Stuckey collection

## Images

---







## Grand Trunk Pacific Bridge Piers

<http://archives.brandonu.ca/en/permalink/descriptions9923>

Part Of: RG 11 Lawrence Stuckey fonds

Creator: George H. Harris

Description Level: Item

Series Number: 3.1

Item Number: 1-2002.3.1OB7

Accession Number: 1-2002

GMD: graphic

Date Range: June 1940

Physical Description: 2 1/2" x 4"

Material Details: Negative

Custodial History:

For custodial history see the collection level description of the Lawrence Stuckey collection.

Scope and Content:

Grand Trunk Pacific bridge piers

Notes: Shows centre pier

[Notes on negative read "Near Brandon; Never Used; Dated 1913"]

Name Access: Grand Trunk Pacific Bridge Piers

Subject Access: manmade geographic features

bridges

Brandon Area Bridges

Repro Restriction: The McKee Archives is the copyright holder for the Stuckey materials.

Storage Location: Lawrence Stuckey collection

### Images

---





## CNR Engine Terminal

<http://archives.brandonu.ca/en/permalink/descriptions9963>

Part Of: RG 11 Lawrence Stuckey fonds

Creator: George H. Harris

Description Level: Item

Series Number: 3.1

Item Number: 1-2002.3.1PC2

Accession Number: 1-2002

GMD: graphic

Date Range: 1937

Physical Description: 3 1/2" x 5"

Material Details: Negative

Custodial History:

For custodial history see the collection level description of the Lawrence Stuckey collection.

Scope and Content:

Canadian National Railways engine terminal, Brandon.

Notes: Engines left to right: 1345, 1267, 2728, 2637, 1392, 2407

Copy negative

[Located just west of First Street; Looking west. P.E. 28/07/09]

Name Access: CNR Engine Terminal

Subject Access: railroads

railways

locomotives

Canadian National Railways in Brandon - Early

Repro Restriction: The McKee Archives is the copyright holder for the Stuckey materials.

Storage Location: Lawrence Stuckey collection

### Images

---





## CNR Engine Terminal

<http://archives.brandonu.ca/en/permalink/descriptions9964>

Part Of: RG 11 Lawrence Stuckey fonds

Creator: George H. Harris

Description Level: Item

Series Number: 3.1

Item Number: 1-2002.3.1PC3

Accession Number: 1-2002

GMD: graphic

Date Range: 1938

Physical Description: 3 1/2" x 5"

Material Details: Negative

Custodial History:

For custodial history see the collection level description of the Lawrence Stuckey collection.

Scope and Content:

Canadian National Railways engine terminal, Brandon.

Notes: Copy negative

From the collection of George H. Harris, Winnipeg, Manitoba

[Looking west towards First Street crossing. P.E. 28/07/09]

Name Access: CNR Engine Terminal

Subject Access: railroads

railways

locomotives

Canadian National Railways in Brandon - Early

Repro Restriction: The McKee Archives is the copyright holder for the Stuckey materials.

Storage Location: Lawrence Stuckey collection

### Images

---





## 1000 Block of Rosser Avenue

<http://archives.brandonu.ca/en/permalink/descriptions9228>

Part Of: RG 11 Lawrence Stuckey fonds

Creator: L.A. Stuckey

Description Level: Item

Series Number: 3.1

Item Number: 1-2002.3.1CA11

Accession Number: 1-2002

GMD: graphic

Date Range: 1967

Physical Description: 2 1/2" x 2 1/2"

Material Details: Negative

Custodial History:

For custodial history see the collection level description of the Lawrence Stuckey collection.

Scope and Content:

1000 block of Rosser Avenue, north side

Notes: Bank of Commerce; Smith Block.

Name Access: 1000 Block of Rosser Avenue

Bank of Commerce

Smith Block

Subject Access: downtowns

businesses

merchants

banks

Brandon Street Scenes After 1940

Repro Restriction: The McKee Archives is the copyright holder for the Stuckey materials.

Storage Location: Lawrence Stuckey collection

### Images

---





## CPR Engine 144 with Miniota Passenger Train

<http://archives.brandonu.ca/en/permalink/descriptions9960>

Part Of: RG 11 Lawrence Stuckey fonds

Creator: George H. Harris

Description Level: Item

Series Number: 3.1

Item Number: 1-2002.3.1P34

Accession Number: 1-2002

GMD: graphic

Date Range: 1927

Physical Description: 2" x 3"

Material Details: Negative

Custodial History:

For custodial history see the collection level description of the Lawrence Stuckey collection.

Scope and Content:

Miniota passenger train engine 144, a 4-4-0 ["American" type], in Brandon

Notes: Small original negative

From the collection of George H. Harris, Winnipeg, Manitoba.

Name Access: CPR Engines

Subject Access: railroads

railways

locomotives

passenger trains

Canadian Pacific Railway in Brandon

Repro Restriction: The McKee Archives is the copyright holder for the Stuckey materials.

Location Copy: 1-2002.3.9.93

Storage Location: Lawrence Stuckey collection

### Images

---

